

USER'S MANUAL

Dressing Table Set

THIS INSTRUCTION BOOKLET CONTAINS **IMPORTANT** SAFETY INFORMATION. PLEASE READ AND KEEP FOR FUTURE REFERENCE.

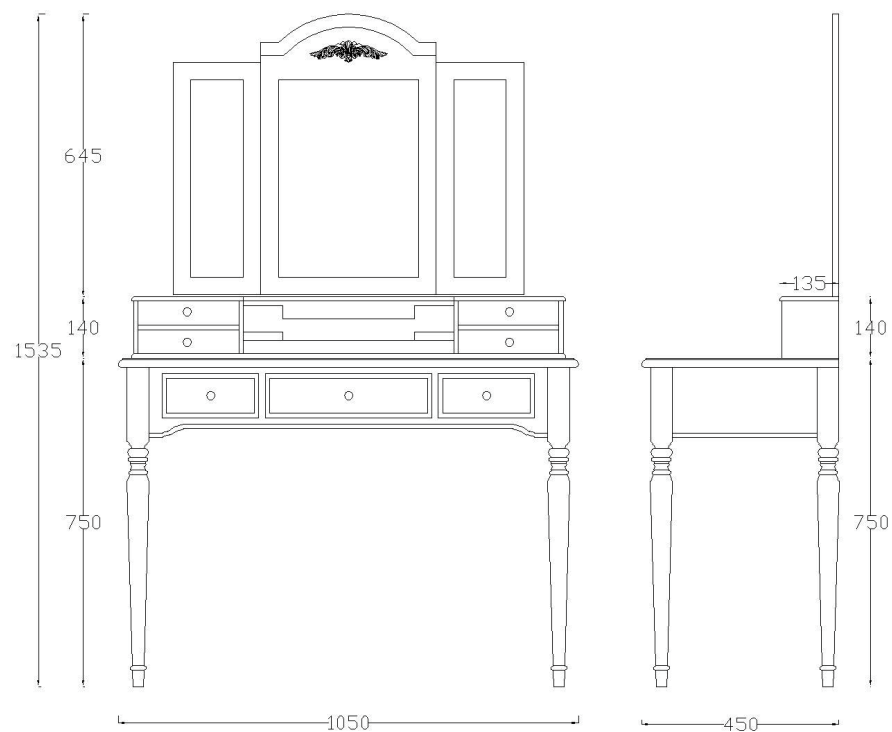
- ⦿ Please read all instructions carefully.
- ⦿ Retain instructions for future reference.
- ⦿ Separate and count all parts and hardware.
- ⦿ Read through each step carefully and follow the proper order.
- ⦿ We recommend that, where possible, all items are assembled near to the area in which they will be placed in use, to avoid moving the product unnecessarily once assembled.
- ⦿ Always place the product on a flat, steady and stable surface.
- ⦿ Keep all small parts and packaging materials for this product away from babies and children as they potentially pose a serious choking hazard.

Guide of Manual

- Please read the following instruction carefully and use the product properly.
- Please keep this manual and hand it over when you transfer the product. This summary may not include every detailed information of all variations and considered steps.
- Please contact us when further information and help needed.
- Copying, reselling, translating or other modification of this manual is strictly forbidden, ©Wuppessen, Inc.

Notes

- This product is designed for personal home use, not for use in a commercial environment. The seller does not take responsibility for damage or injury if user disregards this instruction.
- To eliminate tipping hazards, we recommend attaching this product to the wall with the safety strap provided. Because construction materials vary, please consult a local professional for the most suitable way to attach to your wall.
- Prior to assembly, please check product for defects or missing parts; if any defects are found or accessories are missing, contact us for replacement.
- It is recommended that this product be assembled by two people. Assemble the item on a soft surface to avoid damage.
- Semi-tighten all screws and bolts at desired positions, then fully tighten them.
- Please use manual tools to assemble product to avoid damaging the product, we do not recommend the use of a power tool.
- After fully assembling your vanity set, please allow the piece to sit in a well ventilated area, out of direct sunlight, for two days.
- We recommend periodically checking bolts, screws and connection points; retighten if necessary.
- Keep sharp objects and corrosive chemicals away from product surfaces.
- Keep heat sources and liquids away from product surfaces.
- Avoid exposure to strong sunlight and humidity to prevent structural distortion.
- Please do not place heavy items on the product to avoid structural distortion.
- Avoid shaking the product after the product is assembled and positioned.
- Please seek assistance when moving the product. Do not pull or drag the product to avoid damage and injury.
- When moving the product to other places, please fully disassemble the product and keep all original parts for reassembly.

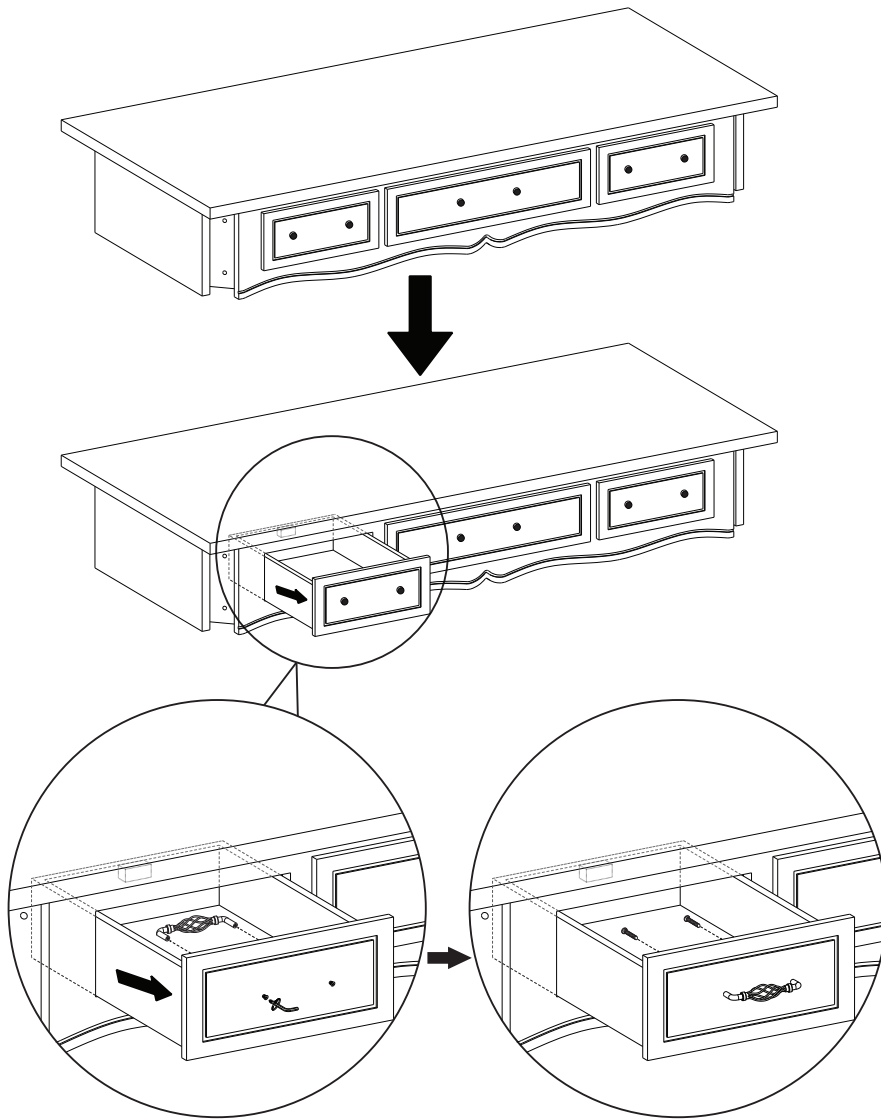


PARTS LIST

A × 1 	B × 1 	C × 1
D × 1 	E × 1 	F × 4
G × 4 	H × 16 M6×40mm	I × 7 M5×20mm
J × 1 	K × 1 	L × 1

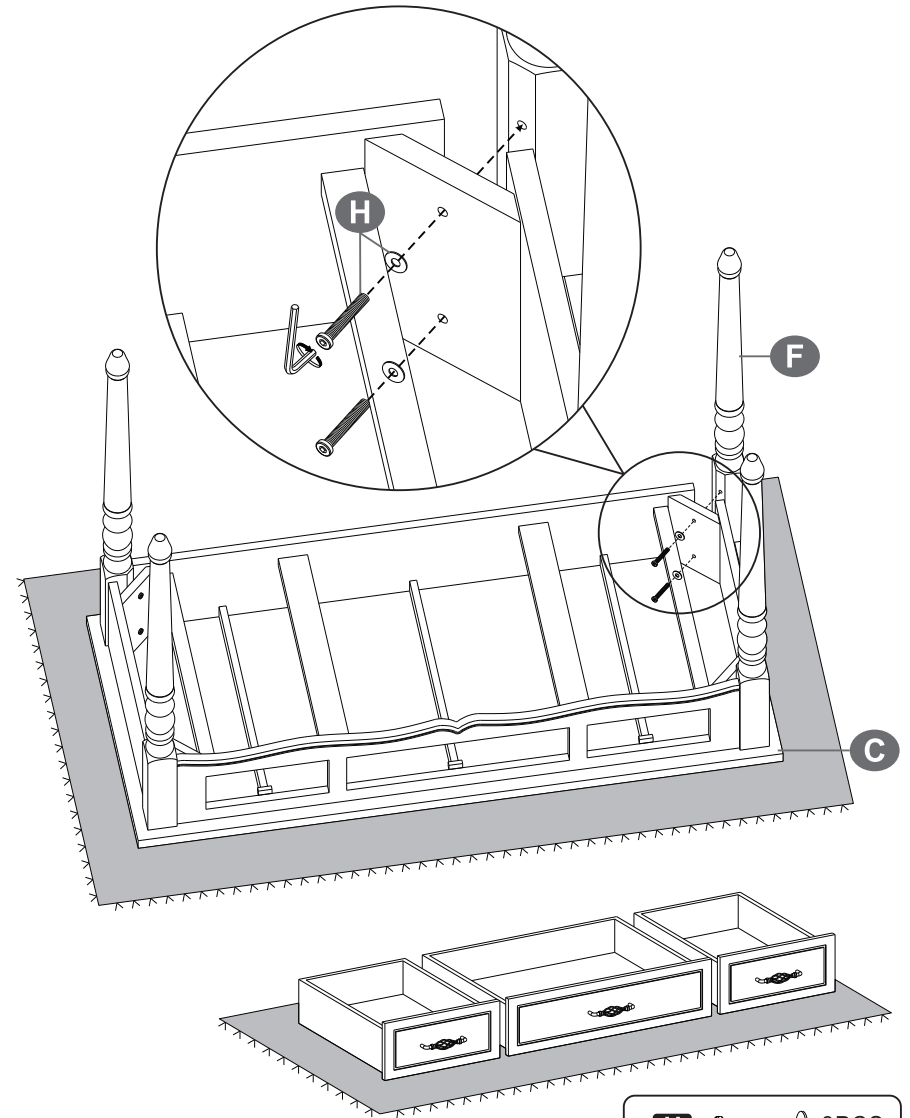
ASSEMBLY STEPS

- 1 Recommend 2 people to install.**



ASSEMBLY STEPS

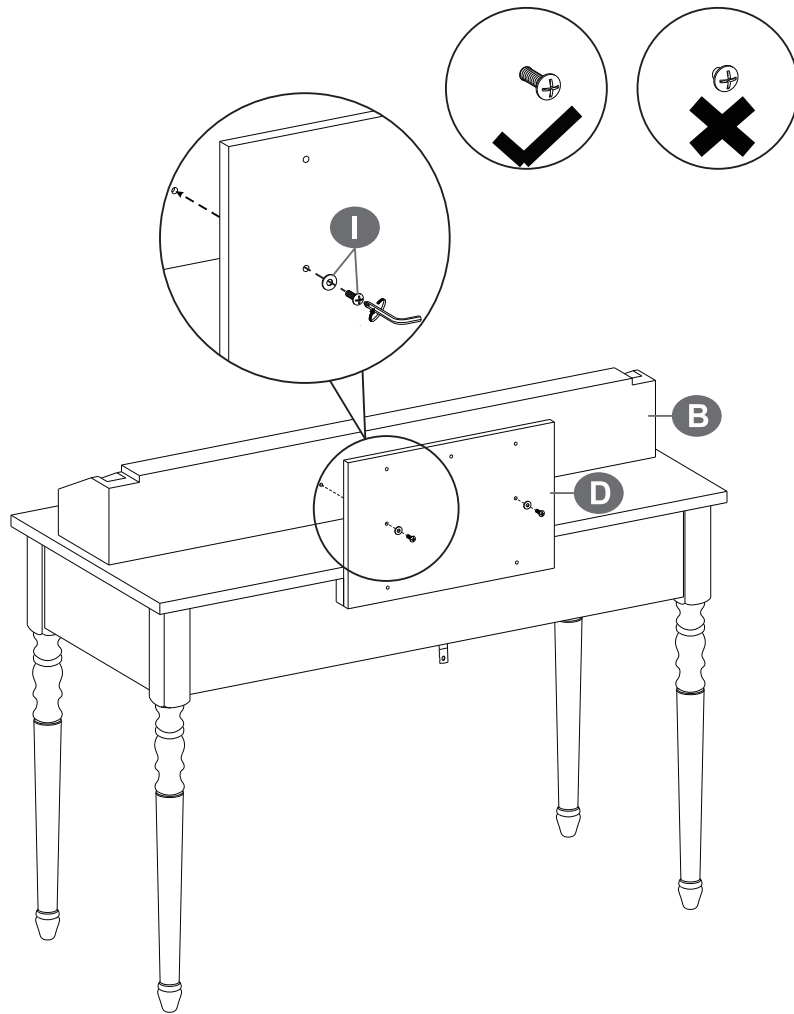
- 2 Place the table on a soft surface to prevent scratches.**






H  8PCS

ASSEMBLY STEPS

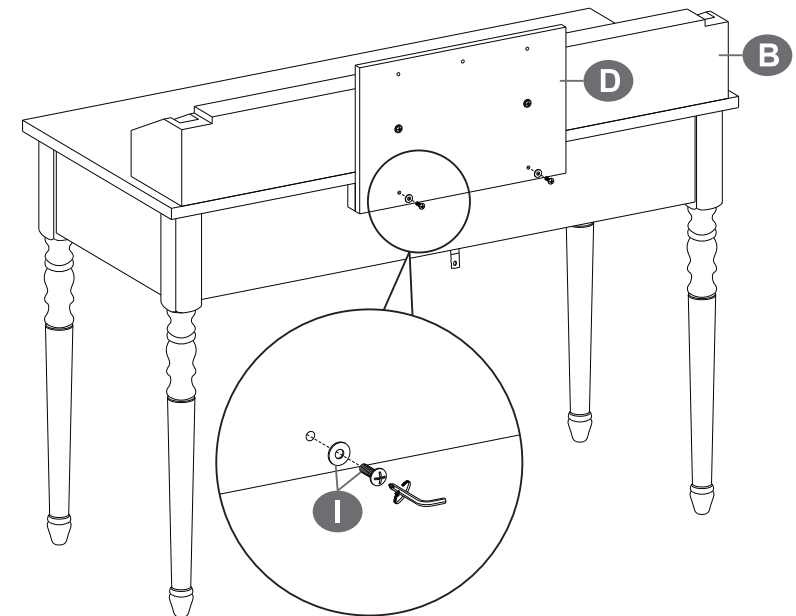
- 3 Semi-tighten the screws and fully tighten them after step5.






   2PCS

ASSEMBLY STEPS

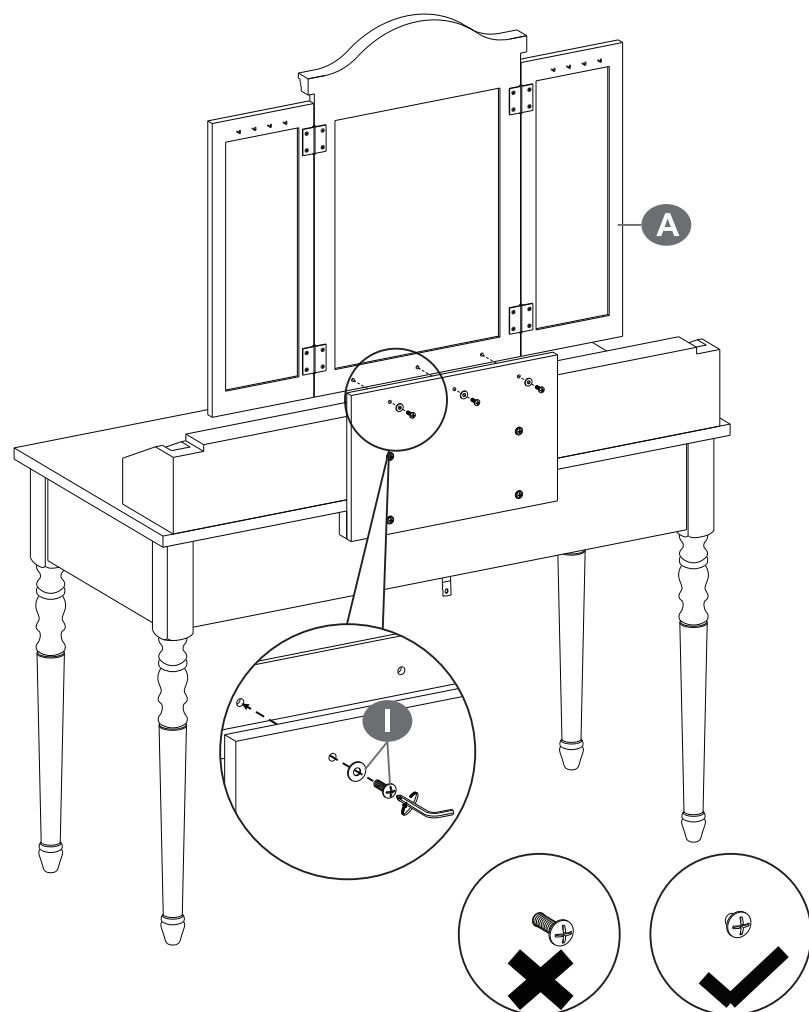
- 4





   2PCS

ASSEMBLY STEPS

5

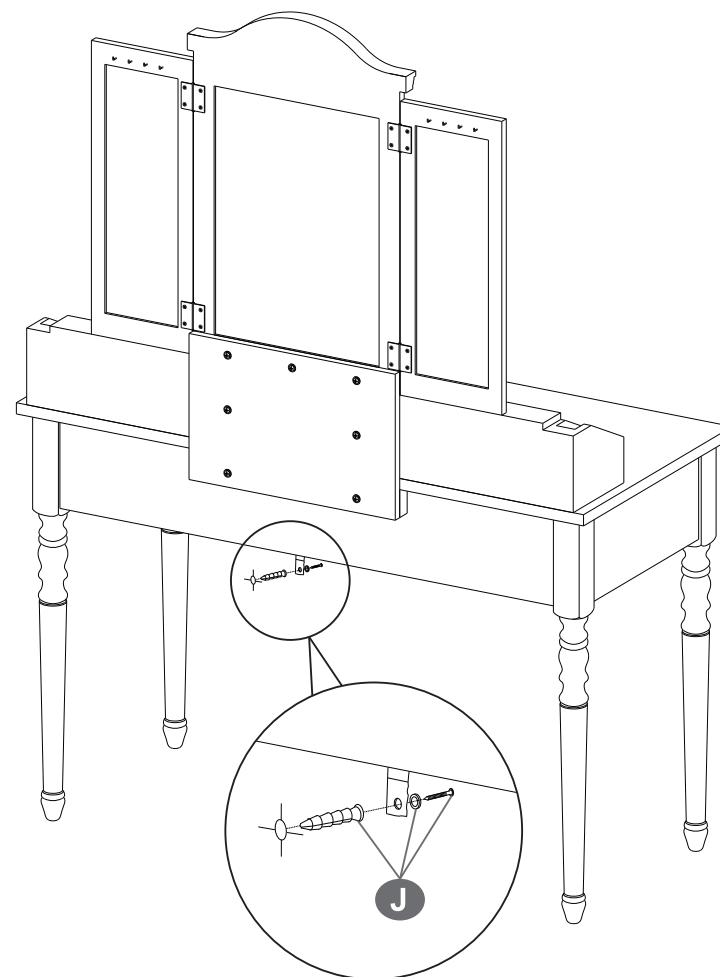



I   3PCS

ASSEMBLY STEPS

6

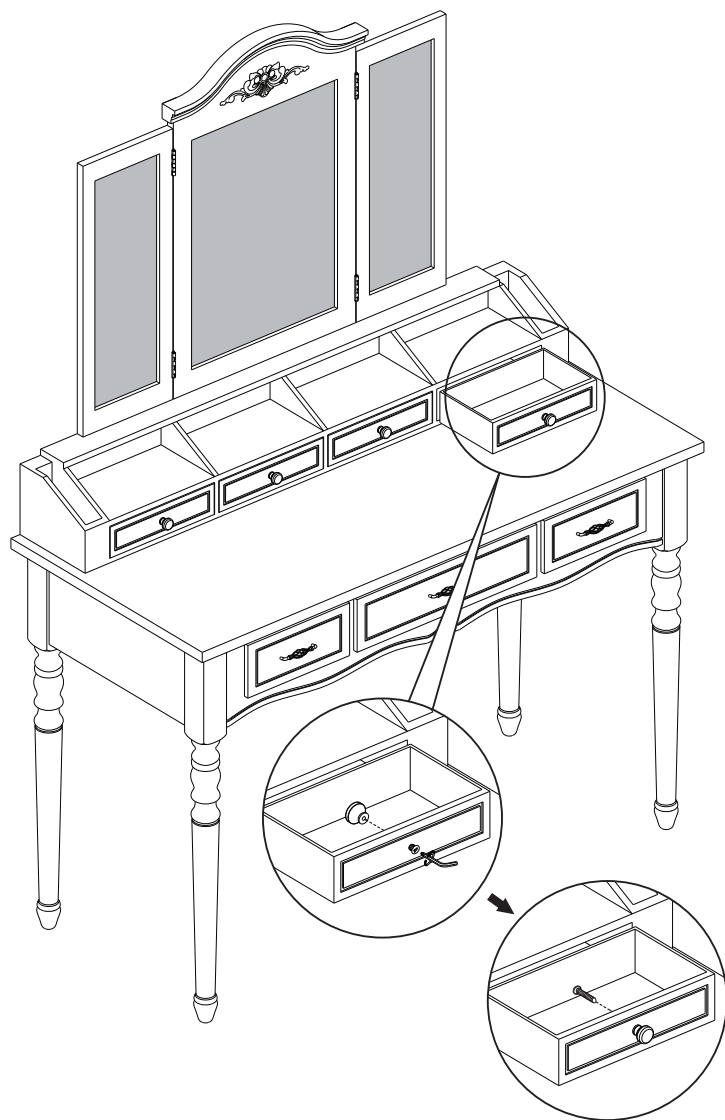
Please fix the table to the wall with strap to prevent table tipping over.



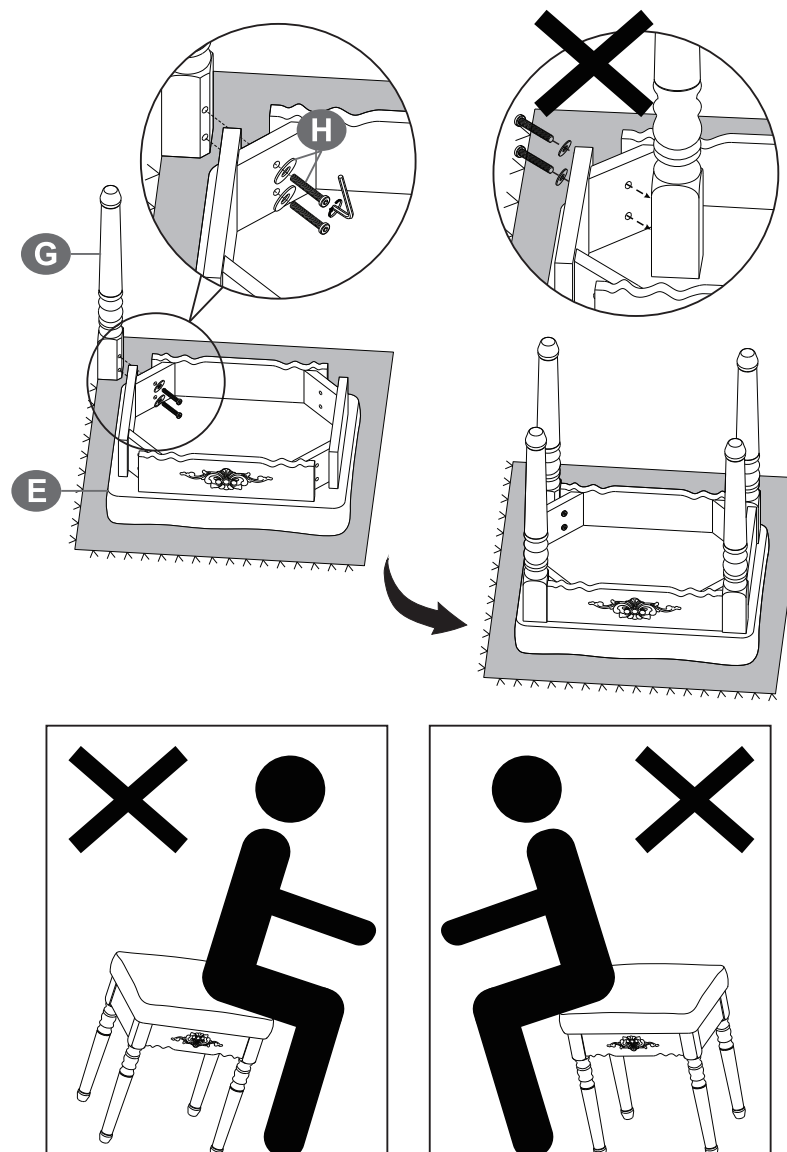
J  1PCS

7

Place the table on a soft surface to prevent scratches.



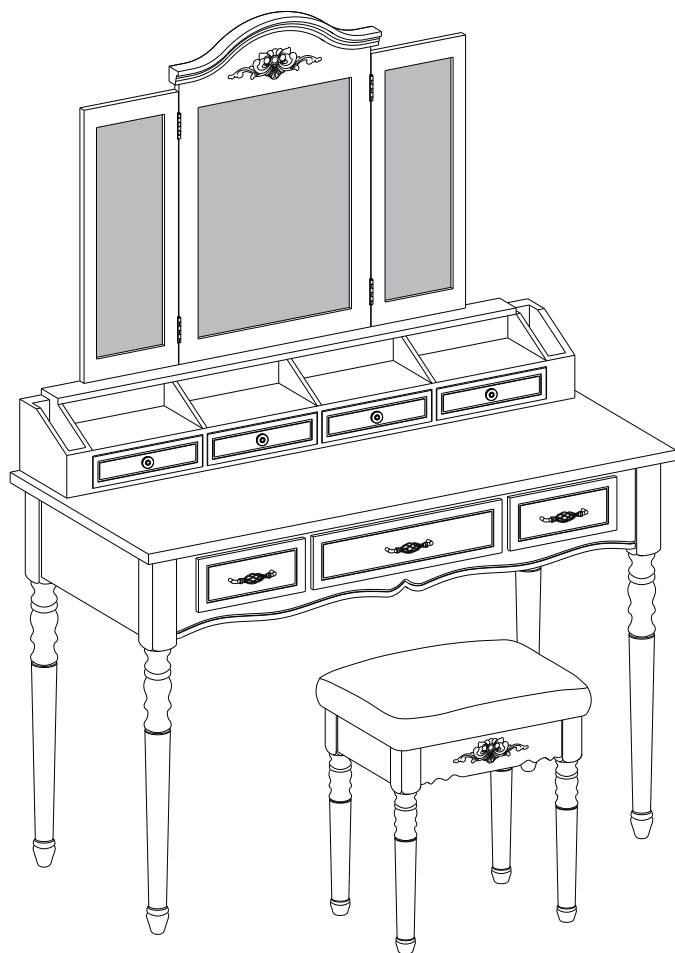
8



H  8PCS

ASSEMBLY STEPS

9



- * Reward Points
- * Exclusive Customer Service
- * Personalized Recommendations
- * Permanent Shopping Cart
- * Order History

5 Star Rating



We would like to extend our heartfelt thanks to all of our customers for taking time to assemble this product and giving us valuable feedbacks.

THANK
you
(smiley face)