

JUDGE **Electric Skillet**



Instruction Manual

Model No. JEA23

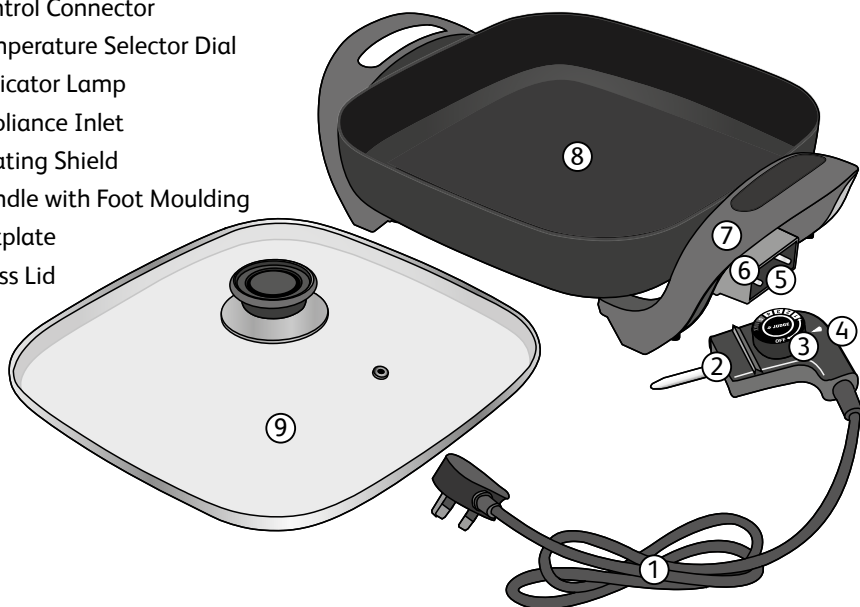
V002

**PLEASE READ THIS INSTRUCTION MANUAL CAREFULLY
BEFORE USE AND SAVE FOR LATER REFERENCE.**

**UNPACK YOUR ELECTRIC SKILLET CAREFULLY AND REMOVE
PACKING PIECES, LABELS AND STICKERS BEFORE USE**

Identifying the parts

1. Power Cord and Plug
2. Control Connector
3. Temperature Selector Dial
4. Indicator Lamp
5. Appliance Inlet
6. Heating Shield
7. Handle with Foot Moulding
8. Hotplate
9. Glass Lid



How to use

Before Operation: insert the Control Connector (2) firmly as far as it will go into the Skillet's Appliance Inlet (5), leaving the Temperature Indicator (3) set below the Minimum mark - turn it anti-clockwise as far as it will go. Then insert the Power Cord Plug (1) into the mains socket. (The Electric Frypan may emit abnormal smells when used for the first time - they are not hazardous and will disappear after a few minutes). When cooled wipe the hotplate with a damp cloth.

Automatic Temperature Regulator on Control Connector:

1. The thermostat can be adjusted from minimum to maximum by setting the Temperature Selector Dial (3) from 1 to 5, to suit the type of meal to be prepared.
2. Once the desired temperature has been reached, the thermostat's indicator lamp (4) will turn off automatically; it will light again when temperature falls below the setting selected.
3. Always use the Lid (9) when cooking.

Cooking Tips

- Very little fat is necessary during cooking because of the Non-Stick pan coating - it is better to marinate the food or lightly brush it with oil before cooking than add oil or fat to the pan.
- When the food is ready, reduce the Temperature Selector Dial (3) to MIN. If you wish to keep the food warm, lower the Temperature Selector Dial to 1.

Suggested Thermostat Settings

These are offered only as a guide:
cooking times will vary according to your
preferences and individual foods.

Food	Time	Dial
Croissant, bagel warming	3 mins. per side	1 up to 85°C
Eggs over easy	1½ min. per side	3 up to 145°C
Plain omelette	1-2 mins. per side	3 up to 145°C
Toasted cheese	1½ mins. per side	3 up to 145°C
Cut potatoes, 6mm / ¼" thickness	10 mins. turned	4 up to 170°C
Sausages	12-15 mins. turned	4 up to 170°C
Prepared vegetables: Peppers, tomatoes, onions, mushrooms, courgettes etc.	5 mins. per side	4 up to 170°C
Fish steaks*	3-5 mins per side	4 up to 170°C
Lamb, pork chops	5-7 mins per side	5 up to 170°C
Langoustines & similar*	2-3 mins per side	5 up to 170°C

**If frozen refer to instructions on pack*

Cleaning and Maintenance

Care of the Non-Stick surface

1. When cool after use, clean the cooking surface with a cloth or kitchen paper made damp with warm soapy water. When dry apply a little cooking oil to condition the surface. NEVER IMMERSE THE SKILLET IN WATER. Burnt-on foods, when cooled, are best soaked with soapy water from a wad of kitchen towel until they soften.
2. Do not use metal-tipped kitchen tools - wooden or plastic tools are recommended.
3. Do not use harsh or abrasive detergents.
4. If you have to cut food during cooking, we recommend you take the food out of the Electric Skillet and cut it on a board.
5. Do not pour soapy water into the Skillet while it is hot.

Control connector cleaning instructions:

- Clean with dry kitchen paper.
- Do not clean the inlet (5) with damp cloths - it must be kept dry at all times.

Cautions

- Ensure the Electric Skillet Voltage and Power details match your home Supply.
- Do not plug-in to the socket, or operate with wet hands - or allow the Power Cord and Plug to get wet.
- Do not operate the Electric Skillet if the Power Cord ① has become damaged - contact Judge Customer Services at the address given under the Warranty details.
- **Do not touch the underside of the Electric Skillet, which becomes very hot. USE OVEN GLOVES and use only the side handles ⑦ when moving and handling the hot Skillet.**
- **Beware damage to precious surfaces when using the Electric Skillet to Serve at the table.**
- Do not let the Power Cord ① trail within the reach of children.
- Ensure the Power Cord ① is not allowed to touch the hot surface of the Electric Skillet, or any other heated object.
- This appliance can be used by children aged from 8 years and above and persons with reduced physical, sensory or mental capabilities or lack of experience and knowledge if they have been given supervision or instruction concerning use of the appliance in a safe way and understand the hazards involved.
- Children shall not play with the appliance. Cleaning and user maintenance shall not be made by children unless they are older than 8 and supervised.
- Keep the appliance and its cord out of reach of children less than 8 years.
- Never leave unattended when heating.
- Always disconnect the Electric Skillet from the Mains supply when not in use.
- The Electric Skillet must be unplugged and allowed to cool before cleaning.
- Never immerse the Electric Skillet in water.
- Do not use this Electric Skillet if it is malfunctioning; contact Judge Customer Services at the address given under the Warranty details.
- The Pan (Hotplate ⑧) and Lid ⑨ will become HOT during use: always use Oven Gloves and use the side handles ⑦ when handling the hot Electric Skillet.
- Ensure that the Plug, Power Cord, Control Connector and Appliance Inlet are kept totally dry, both in use and in storage.
- When removing the Mains Plug ① or the Control Connector ② hold the actual Plug or Connector itself - do not pull on the cord.
- The metal rod protruding from the Control Connector ② body will be HOT when removed from the Appliance Inlet ⑤.
- Never use Components that differ from those originally supplied. Only the Control Connector ② as supplied must be used.
- The Power Cord ① must be kept away from hot surfaces and the Skillet must not be used near flammable objects such as curtains, or on carpet, combustible mats, plastic table cloths or similar. Protect precious surfaces.
- Site the Electric Skillet on a level and stable surface.

Cautions

- Keep a minimum distance of 15cm between the Electric Skillet and walls; the Skillet stands on legs which holds the protective cover for the heating element 1cm above the work surface or table: this must not be reduced.
- To prevent hazards, a damaged power cord ① must be repaired only by an authorised electrician. If in doubt, contact Judge Customer Services.
- The Control Connector ② must be removed before the Skillet is cleaned.
- This appliance is not intended be operated by means of an external timer or a separate remote-control system.
- **THIS PRODUCT MUST BE EARTHED.**

Specification

Name	Model No.	Max Temp	Wattage	Power Supply
Electric Skillet 30 x 30cm	JEA23	190°C	1500W	220 - 240V ~ 50Hz



Judge 2 Year Domestic Electrical Guarantee

- The Judge 2 Year Domestic Electrical Guarantee covers the product to be free of defects in materials and workmanship for a period of TWO YEARS from the date of original retail purchase.
- During this period, JUDGE will, at their option, repair or replace defective parts of the product, or replace the product, providing the Use Care and Safety Advice have been followed.
- The Guarantee does not cover damage, defect or failure caused by or resulting from accidents, external damage, alteration, modification, abuse, misuse or misapplication.
- The Guarantee does not cover any damage caused by taking the appliance apart yourself, or attempting to repair the appliance yourself.
- **THE PRODUCT IS INTENDED FOR DOMESTIC USE ONLY.**
- Please keep your Purchase Receipt and contact us directly if you encounter any problems with your product.

HORWOOD SHALL NOT BE LIABLE FOR INCIDENTAL OR CONSEQUENTIAL DAMAGES RESULTING FROM THE USE OF THIS PRODUCT (INCLUDING COLOUR FADING, SCRATCHES OR ACCUMULATED DIRT) WITHOUT FOLLOWING THE USE, CARE & SAFETY INSTRUCTIONS.

Note: Due to the introduction of improvements from time to time, the right is reserved to supply products which differ slightly from those illustrated and described in this publication.

Errors and Omissions Excepted.

JUDGE

CUSTOMER SERVICES

Horwood, Avonmouth Way,
Bristol, BS11 9HX, Great Britain

www.judgecookware.co.uk

customerservice@horwood.co.uk

Tel: 0117 940 0000



FOR DOMESTIC USE ONLY

CORRECT DISPOSAL OF THIS PRODUCT



This marking indicates that this product should not be disposed with other household wastes throughout the EU. To prevent possible harm to the environment or human health from uncontrolled waste disposal, recycle it responsibly to promote the sustainable reuse of material resources. To return your used device, please use the return and collection systems or contact the retailer where the product was purchased. They can take this product for environmental safe recycling.