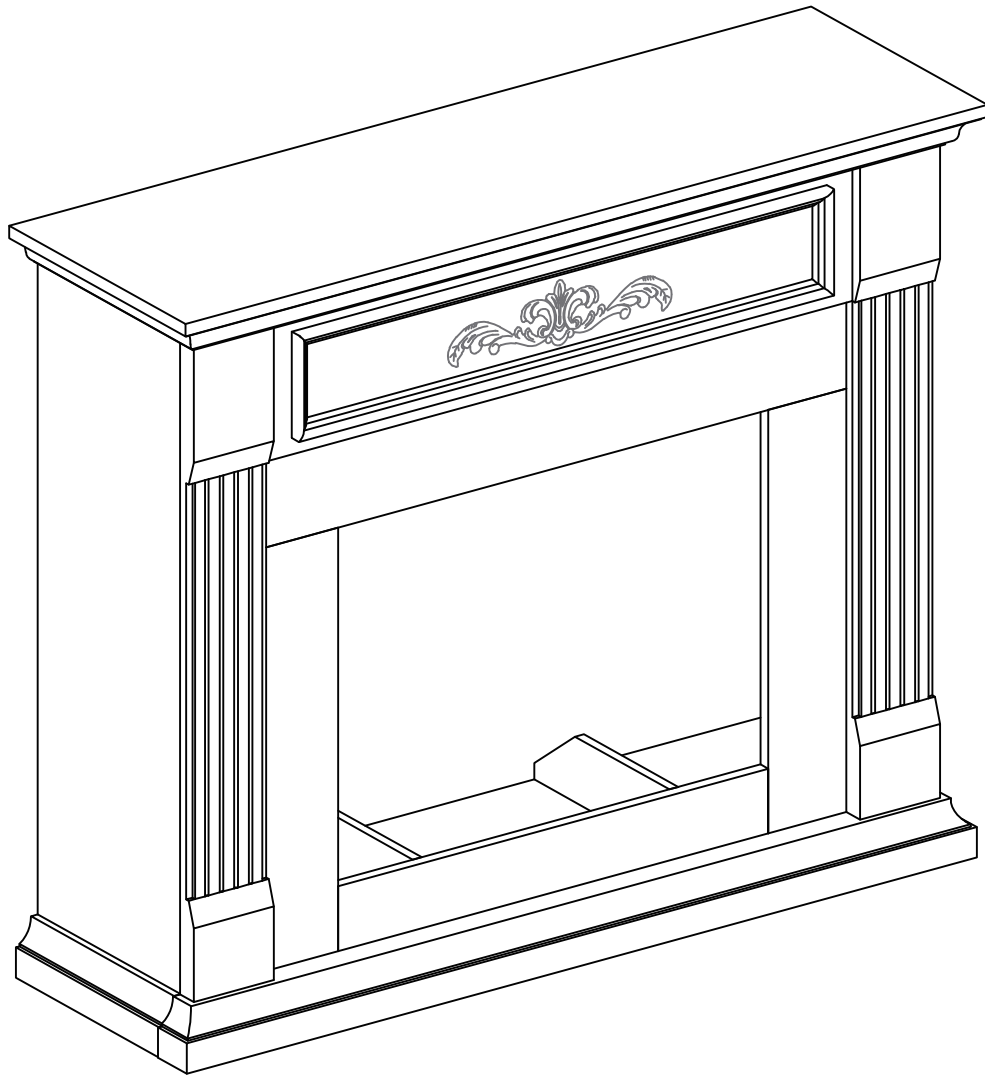


CUSTOMER MANUAL

-V0.1



If you have any questions,
please contact us.

! WARNING



**Children have died from furniture tipover.
To reduce the risk of furniture tipover:**

- ALWAYS install tip-over restraint provided.
- NEVER open more than one drawer at a time.
- NEVER allow children to stand, climb or hang on drawers, doors, or shelves.
- Place heaviest items in the lowest drawers.
- FOR use with televisions weighing 135 lbs or less.
- Use with heavier televisions may result in instability causing tip-over resulting in death or serious injury.



**Use of tip-over restraints may only reduce,
but not eliminate, the risk of tip-over.**

PARTS

A



X 18+2

B



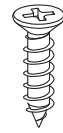
X 18+2

C



Ø6 x 30mm
X 34+2

D



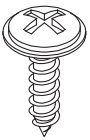
Ø3 x 12 x 6mm
X 12+2

E



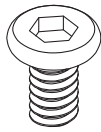
X 6

F



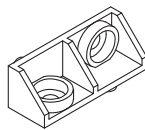
Ø3 x 14mm
X 2

G



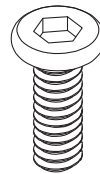
M6 x 12mm
X 24+2

H



X 12

I



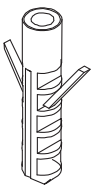
M6 x 20mm
X 17+2

M



X 2

N



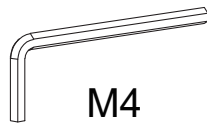
X 2

O



Ø4 x 35mm
X 2

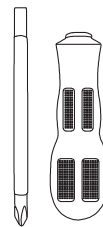
P



M4

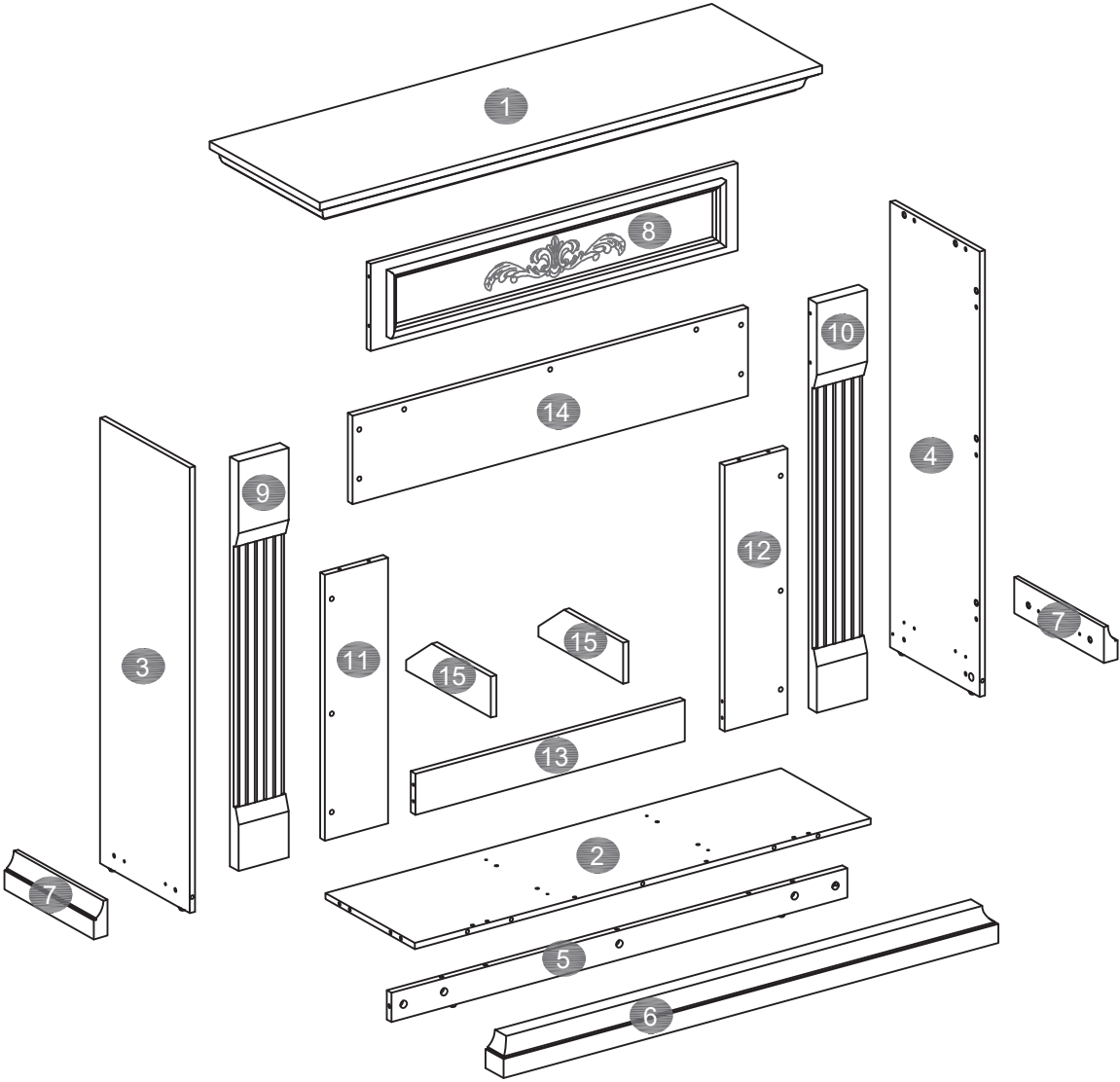
X 1

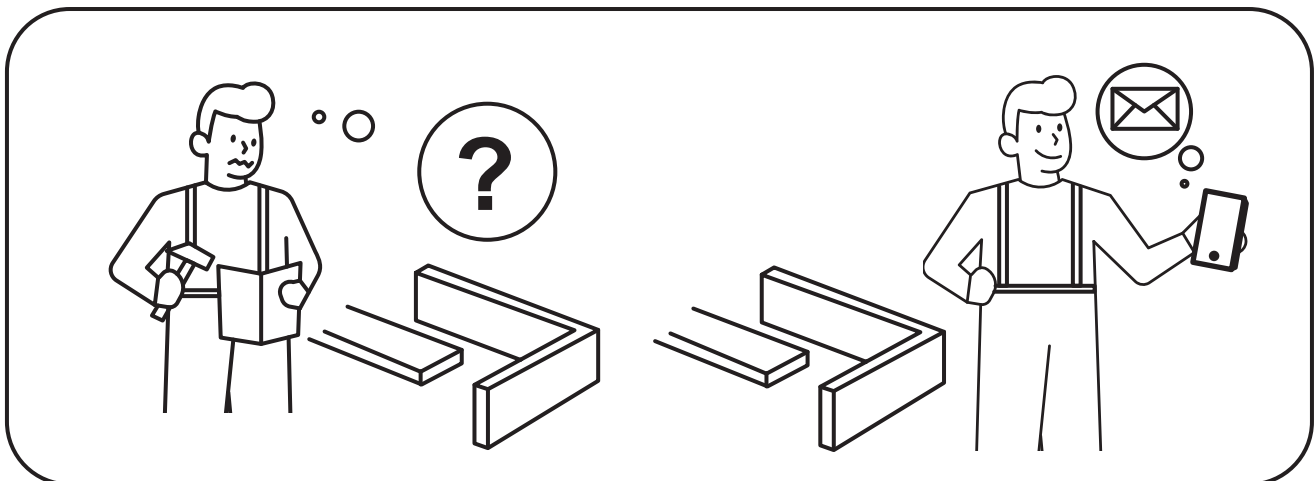
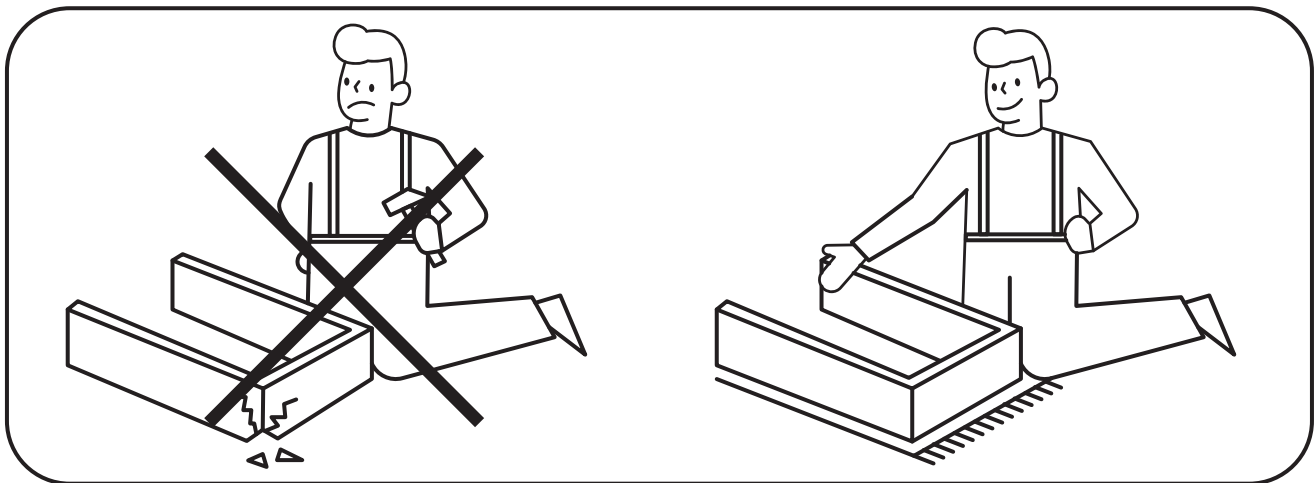
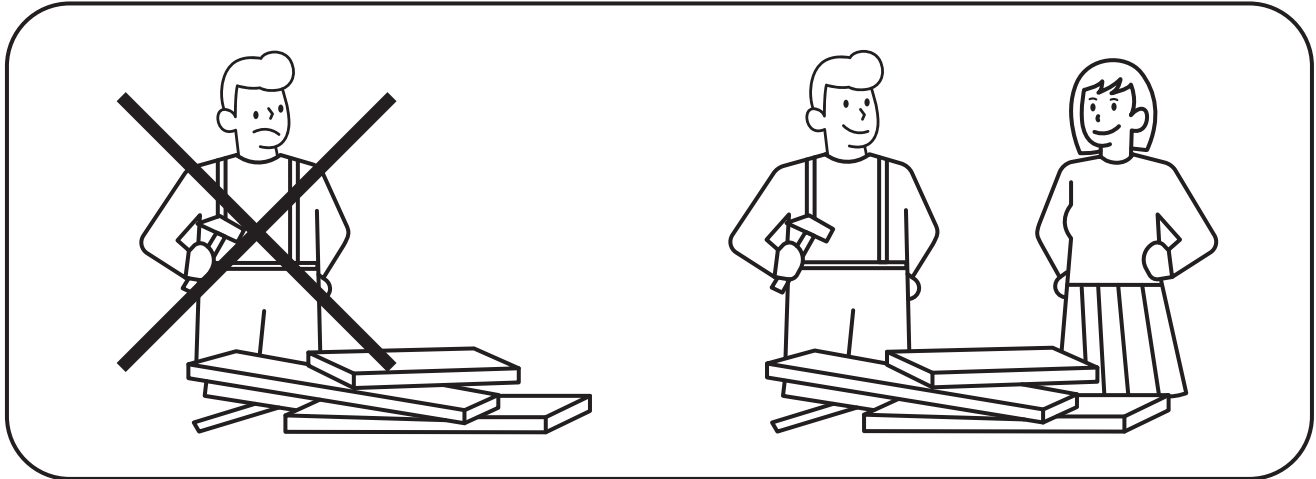
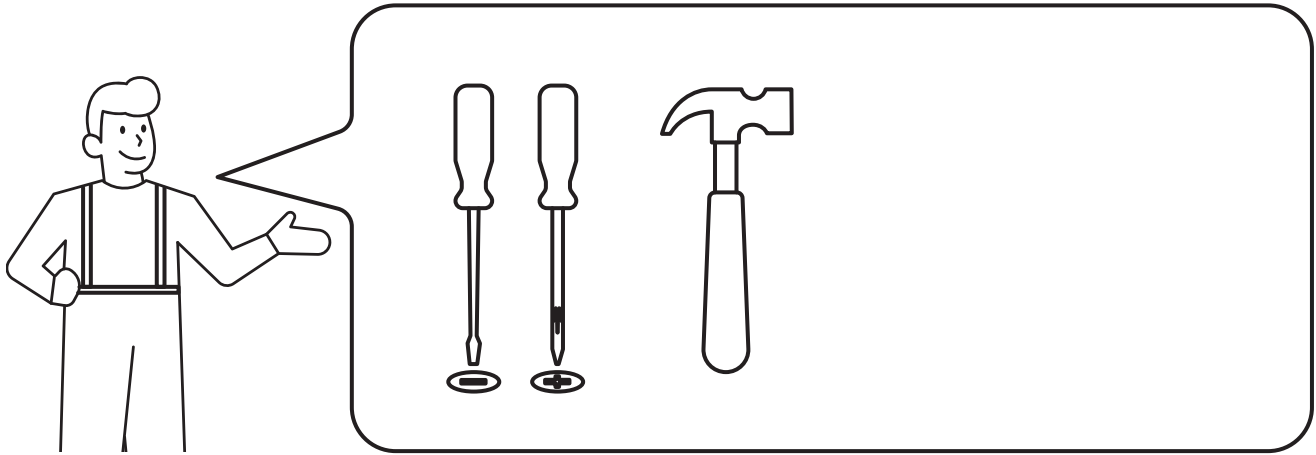
Q



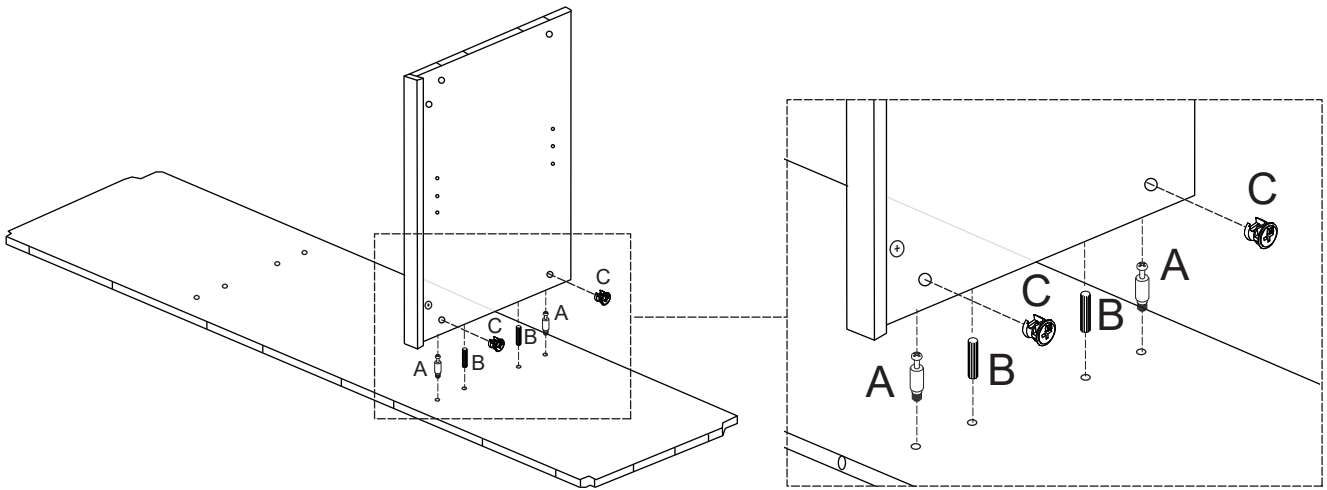
X 1

ASSEMBLY STRUCTURE REFERENCE DIAGRAM



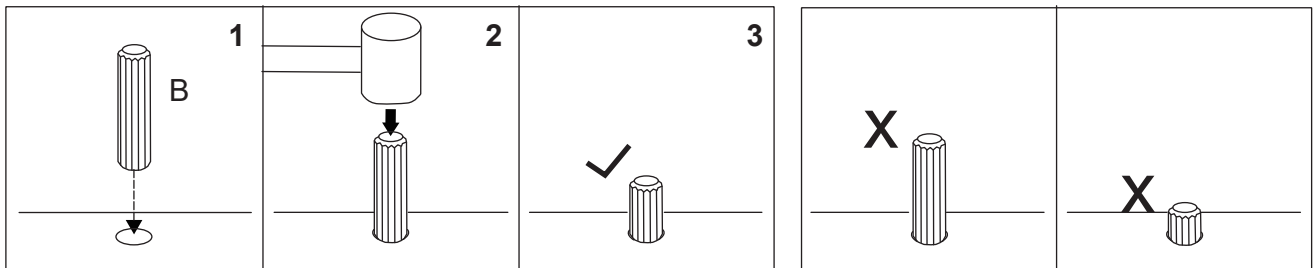


How to work the Knock Down (kd) assembly system

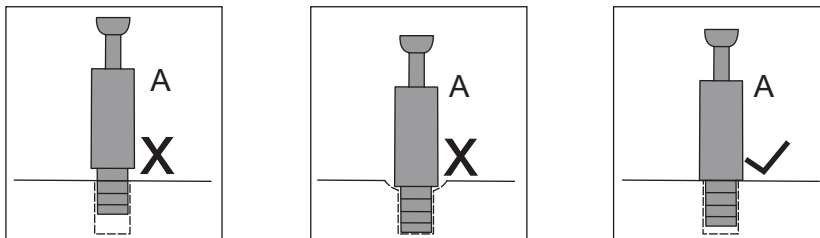


How to install Wood Dowel

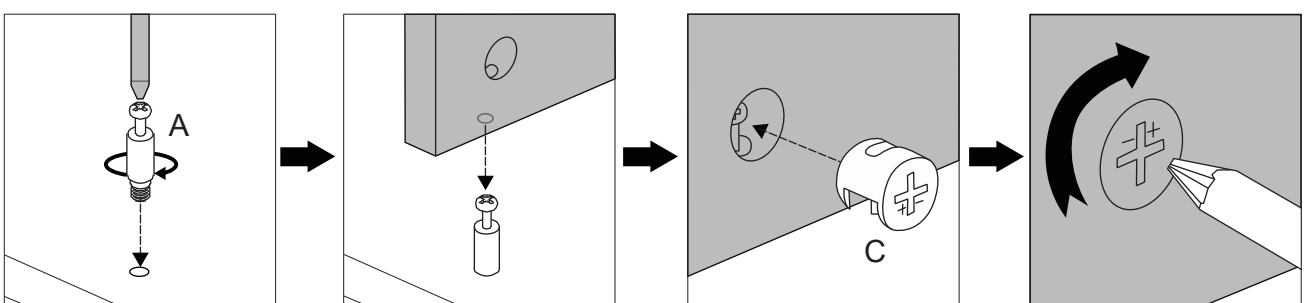
Insert the wood dowel [B] at least half way by tapping lightly with a rubber mallet, IF NECESSARY.



How to use the Cam Lock system

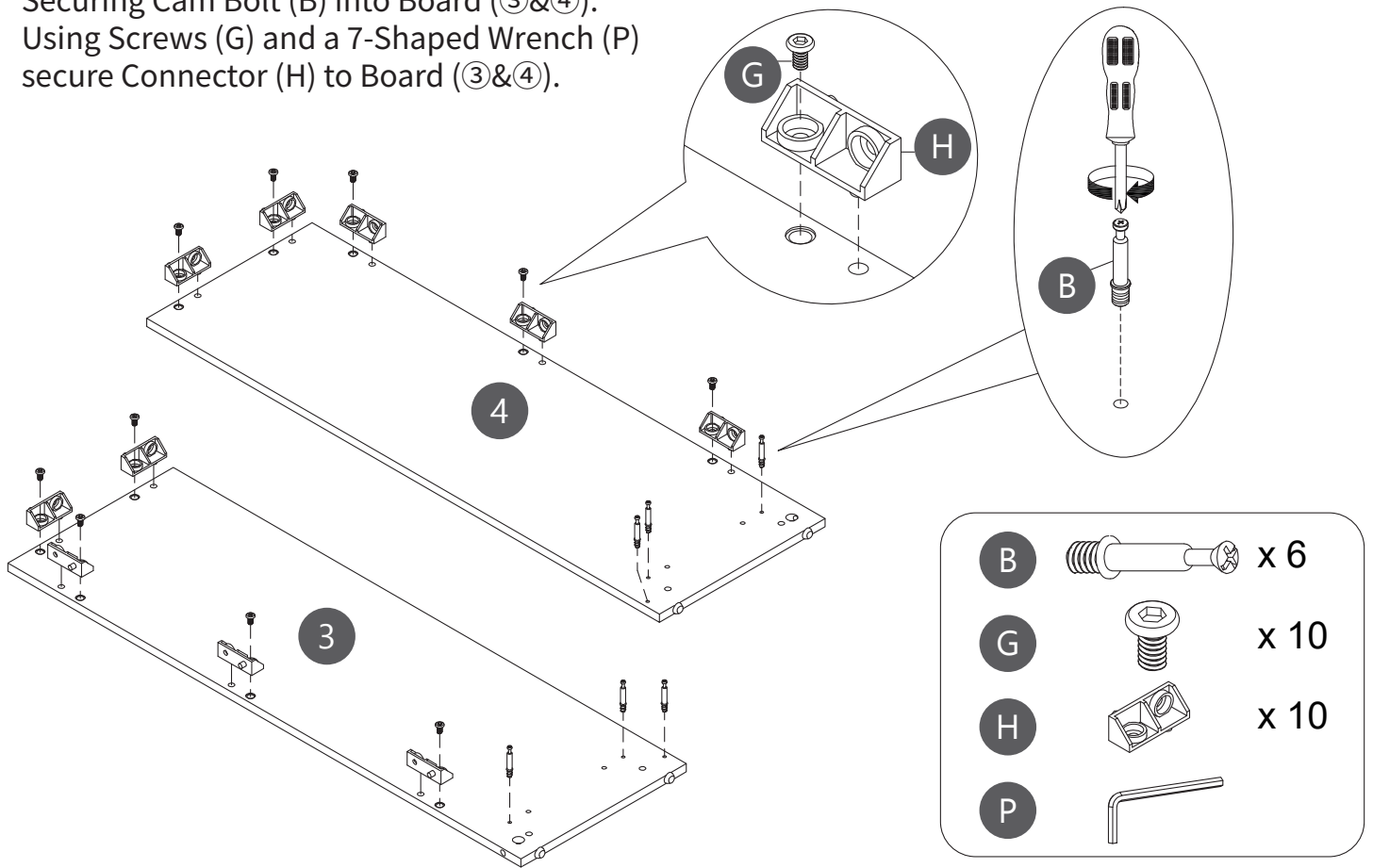


1. Screw the cam bolt [A] into the threaded insert on the panel.
2. Connect both panels together making sure cam bolt [A] goes into the pre-drilled large hole on the end of panel for cam lock [C].
3. Insert the cam lock [C] into the pre-drilled large hole on the panel. **Make sure the cross slot of cam lock [C] faces out.**
4. Rotate the cam lock [C] **clockwise** with a self-supplied philips screwdriver to lock the cam bolt [A] in place.



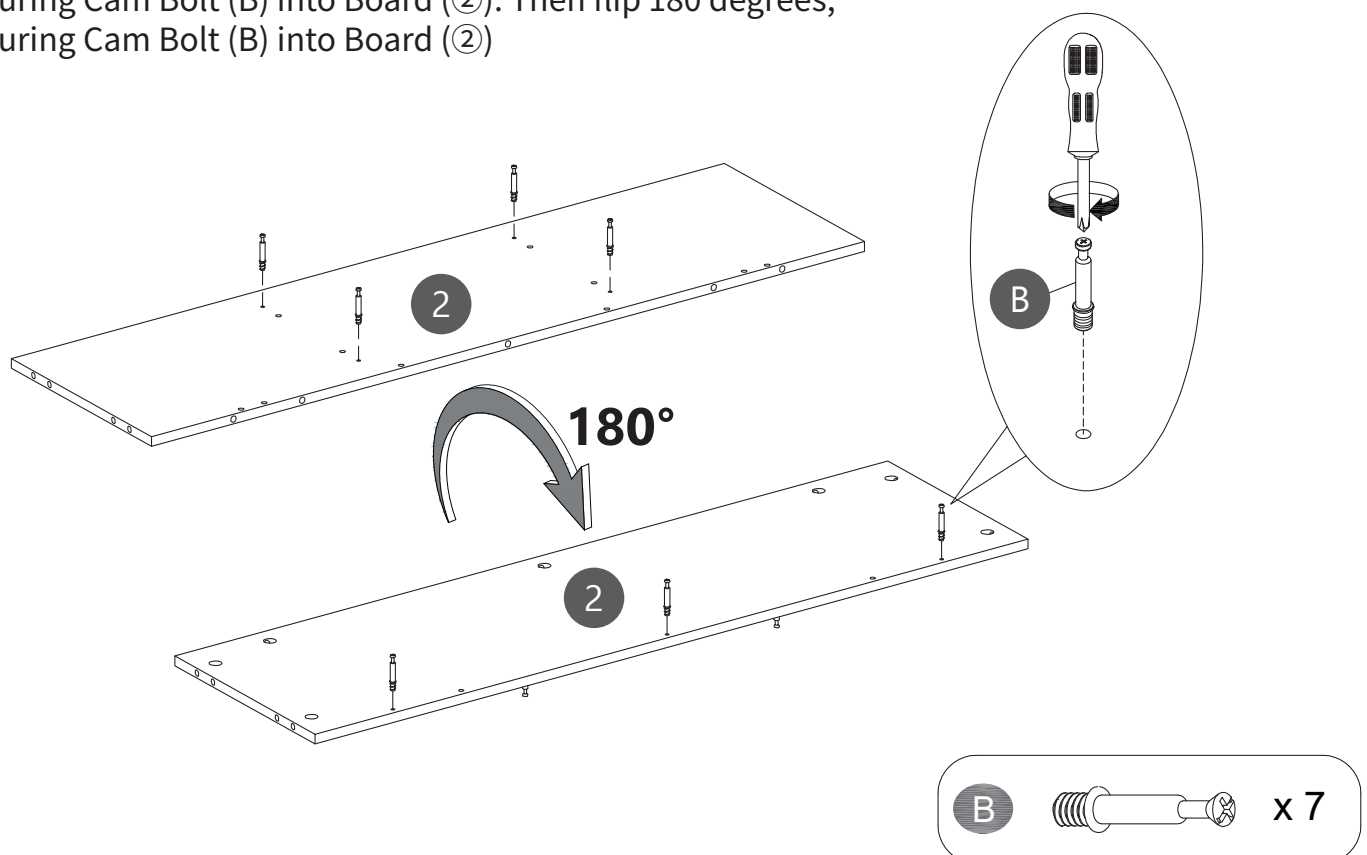
Step 1

Securing Cam Bolt (B) into Board (③&④).
Using Screws (G) and a 7-Shaped Wrench (P)
secure Connector (H) to Board (③&④).



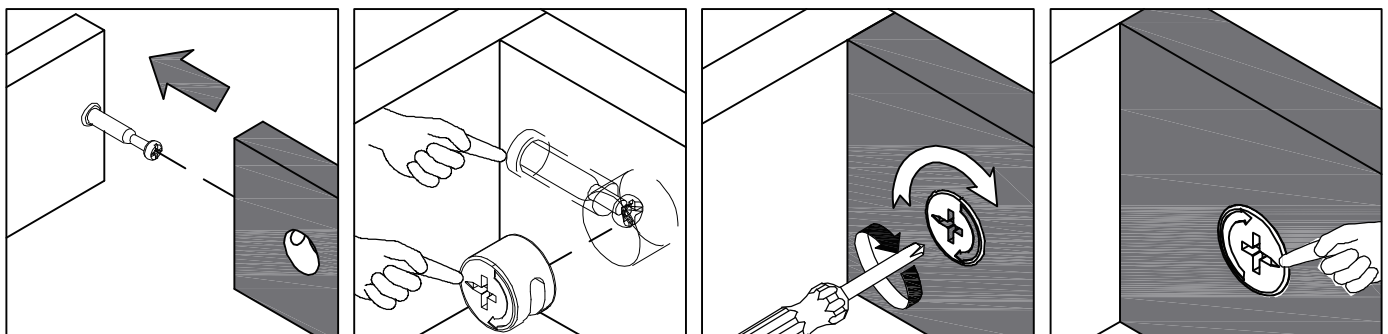
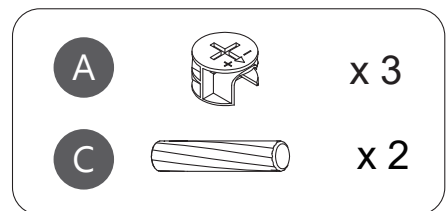
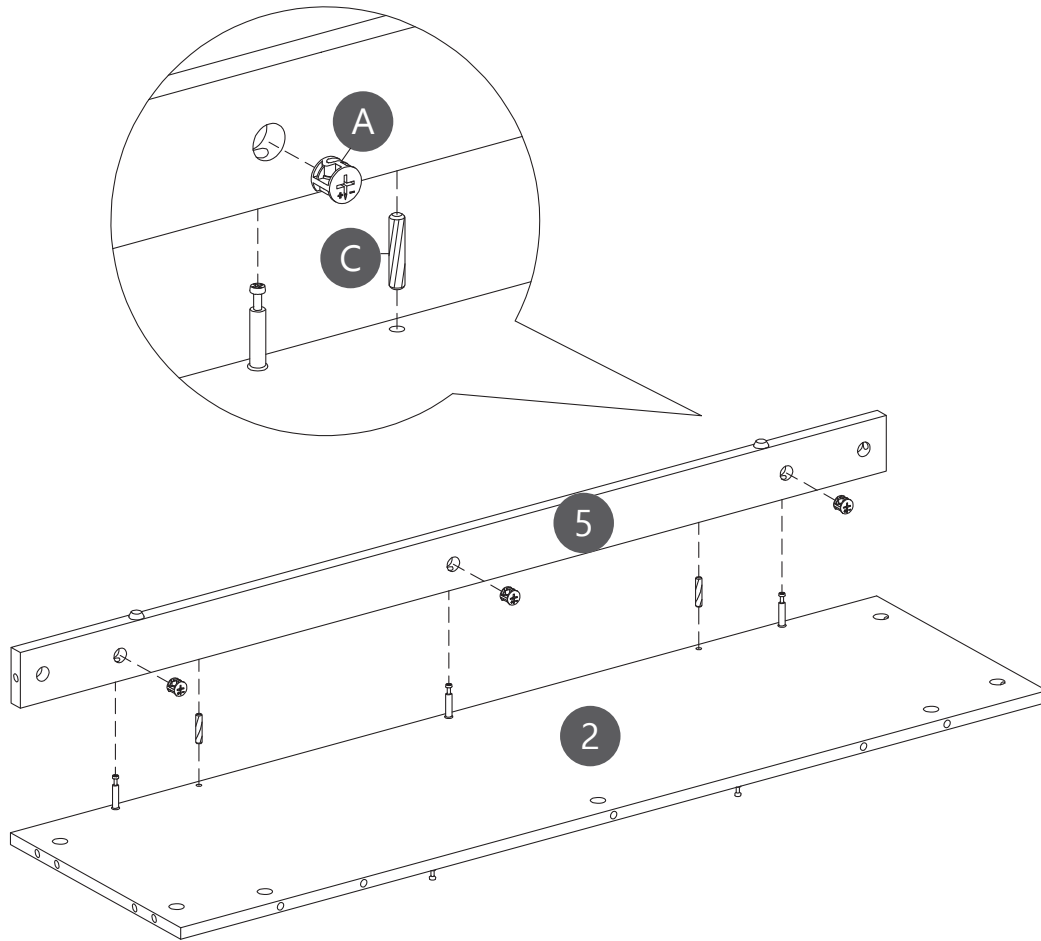
Step 2

Securing Cam Bolt (B) into Board (②). Then flip 180 degrees,
Securing Cam Bolt (B) into Board (②)



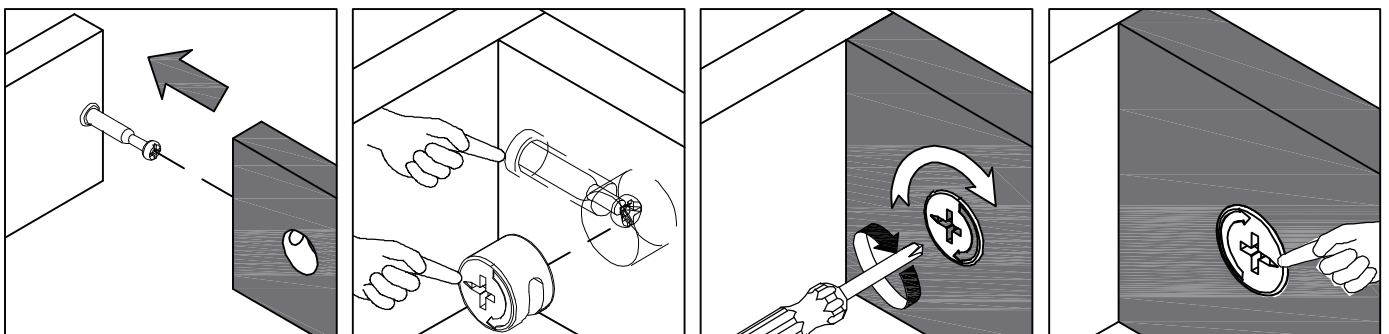
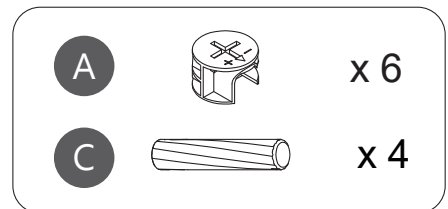
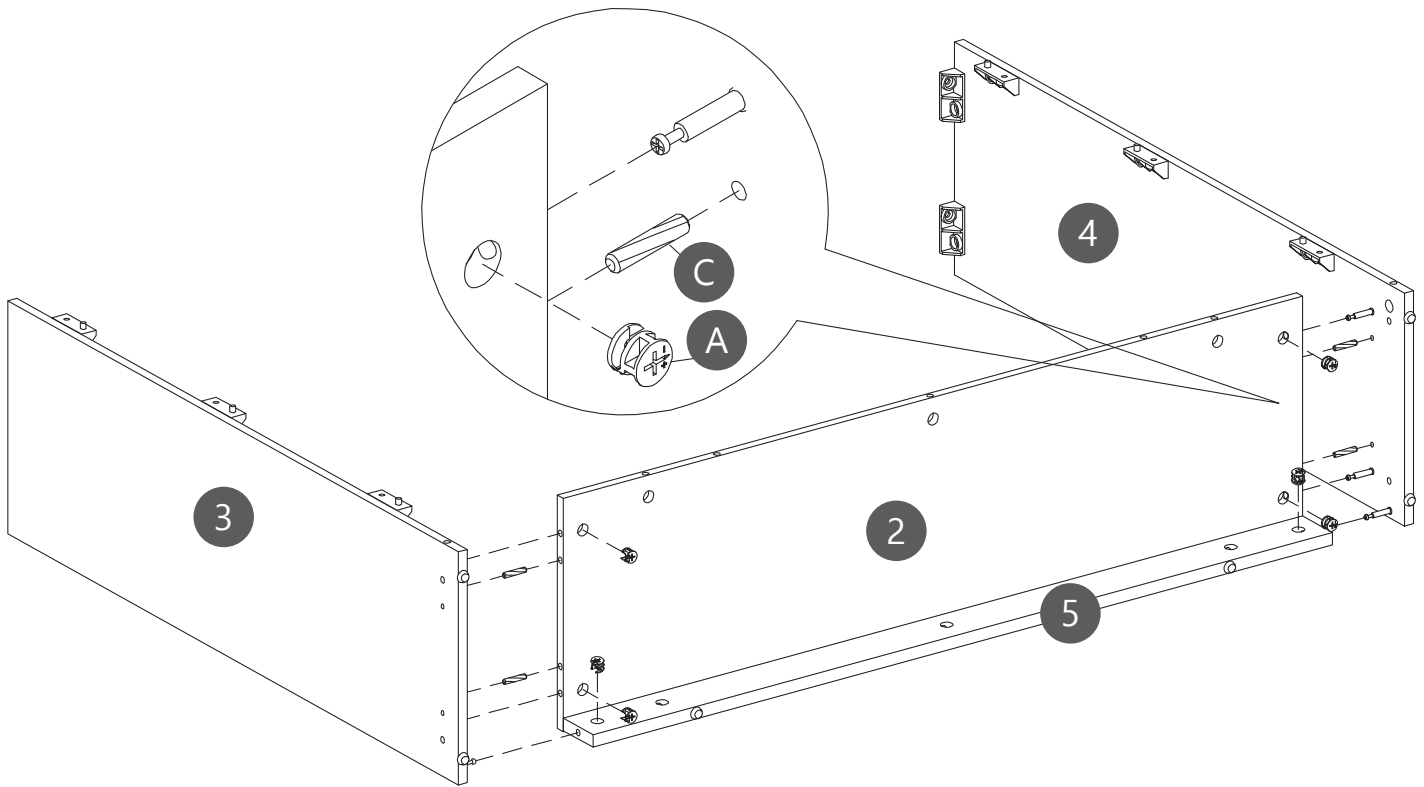
Step 3

Inserting Wooden Dowel (C) into Board (2), then attach Board (5) to Board (2).
Using Cam Lock (A) secure Board (5) to Board (2).



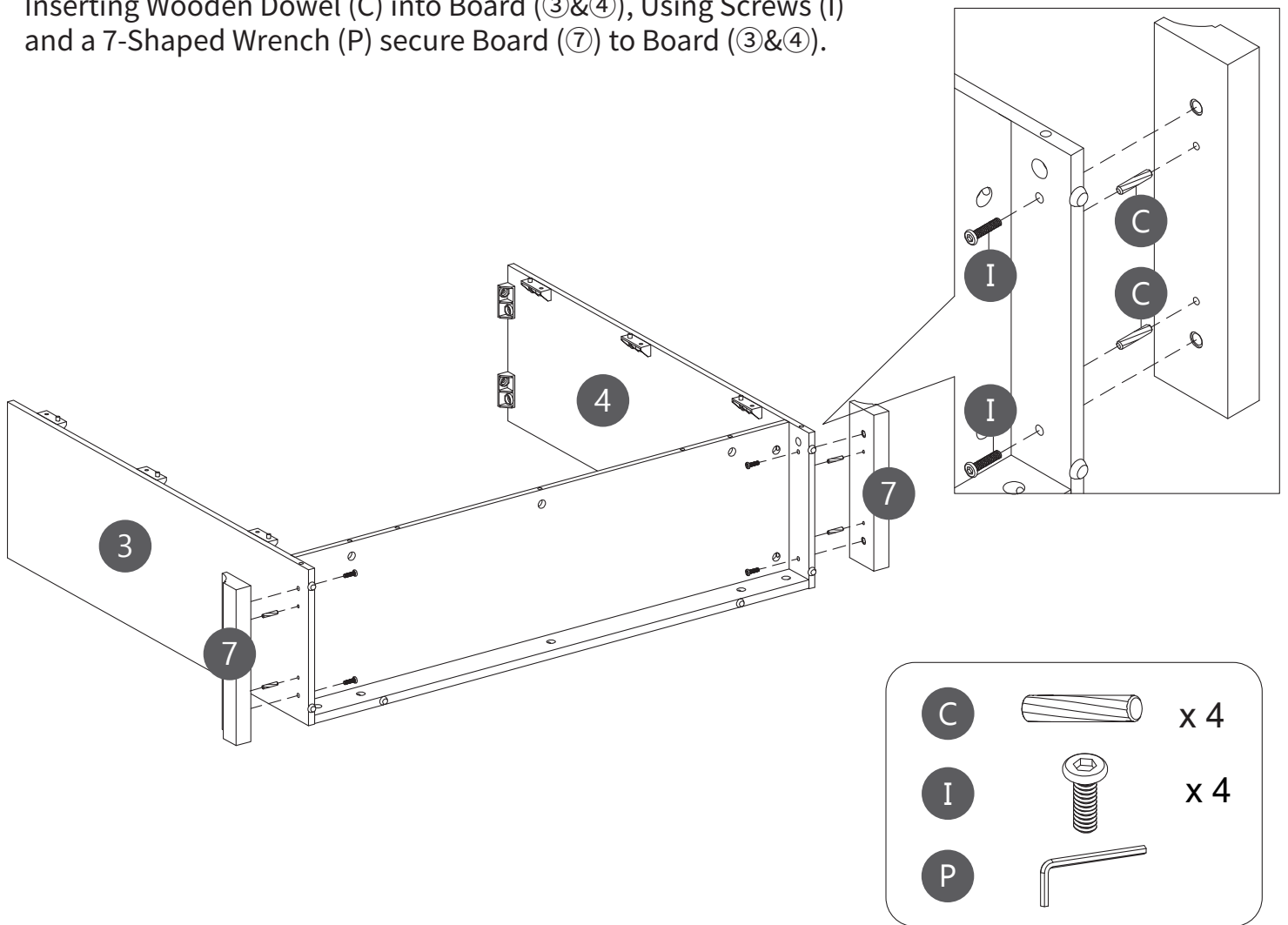
Step 4

Inserting Wooden Dowel (C) into Board (2), then attach Board (3&4) to Board (2&5).
Using Cam Lock (A) secure Board (3&4) to Board (2&5)



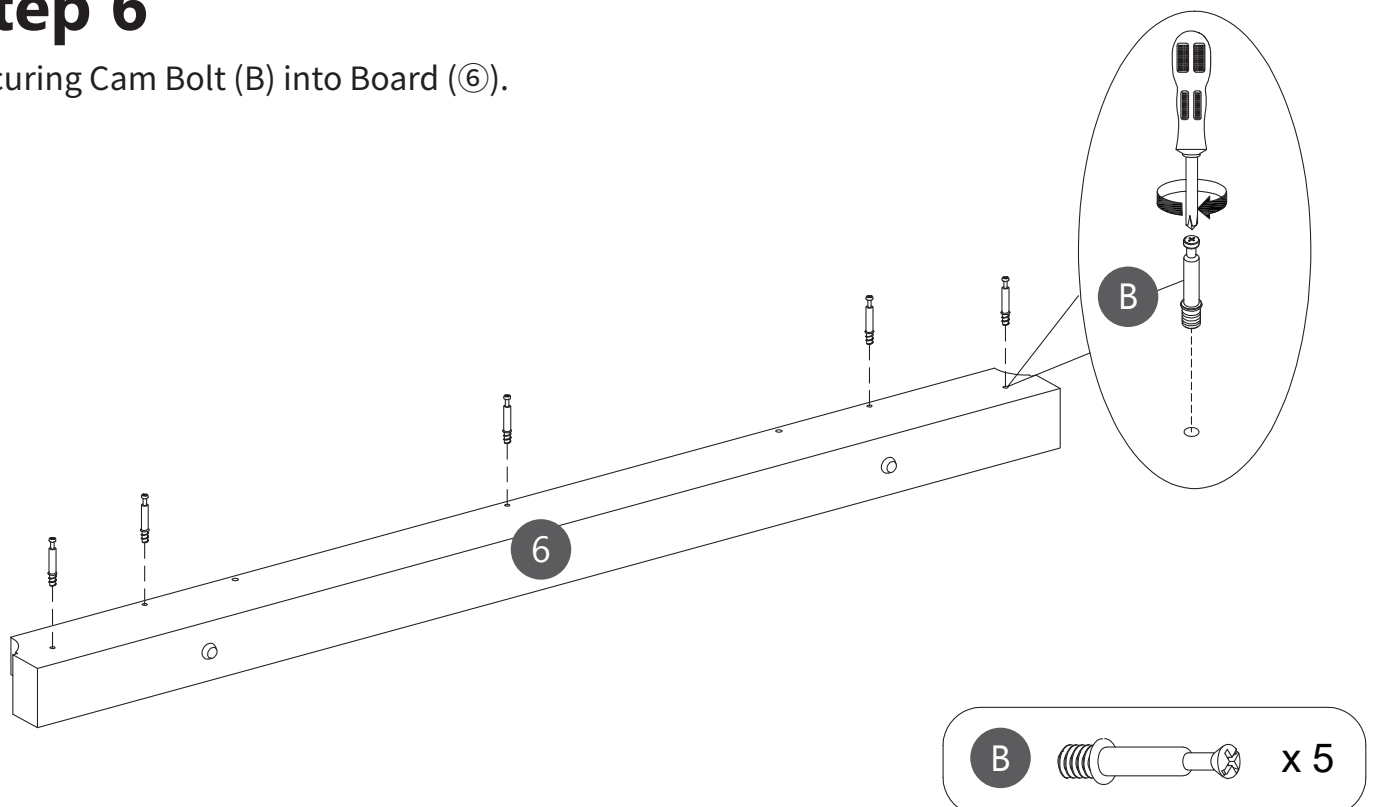
Step 5

Inserting Wooden Dowel (C) into Board (③&④), Using Screws (I) and a 7-Shaped Wrench (P) secure Board (⑦) to Board (③&④).



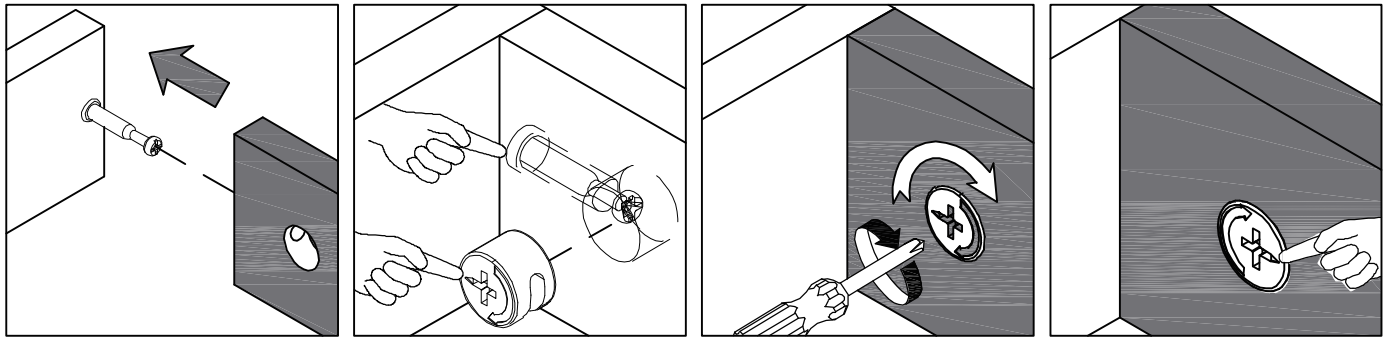
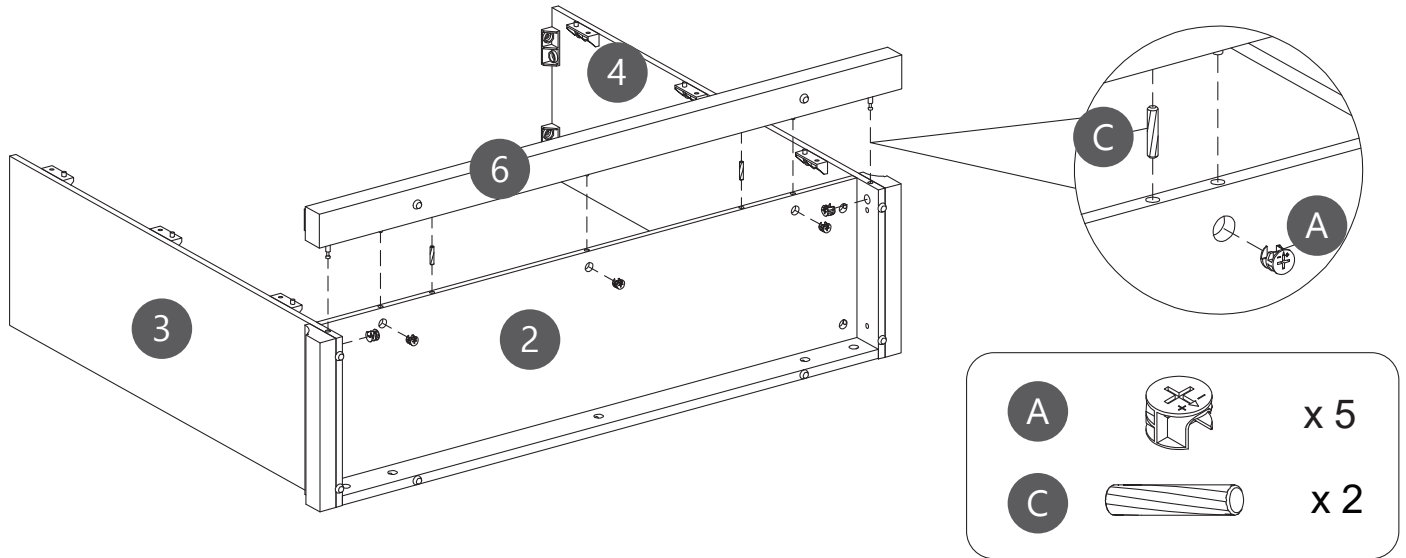
Step 6

Securing Cam Bolt (B) into Board (⑥).



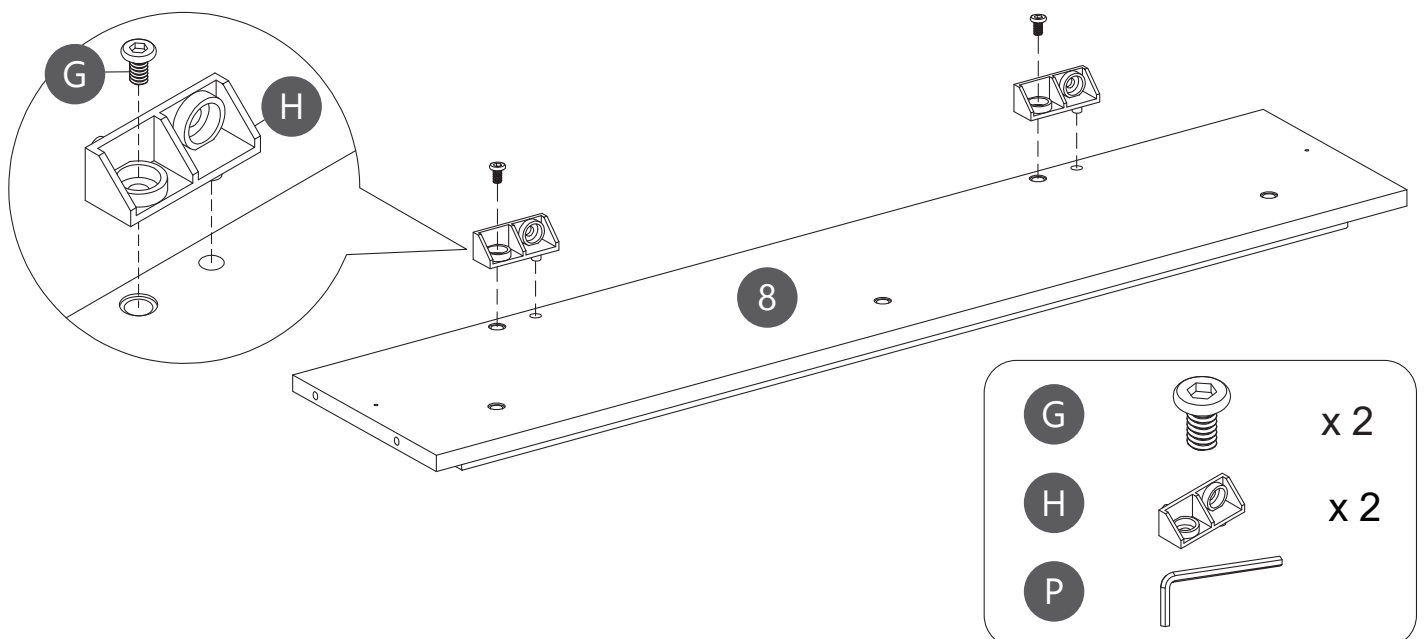
Step 7

Inserting Wooden Dowel (C) into Board (2), then attach Board (6) to Board (2 & 3 & 4). Using Cam Lock (A) secure Board (6) to Board (2 & 3 & 4).



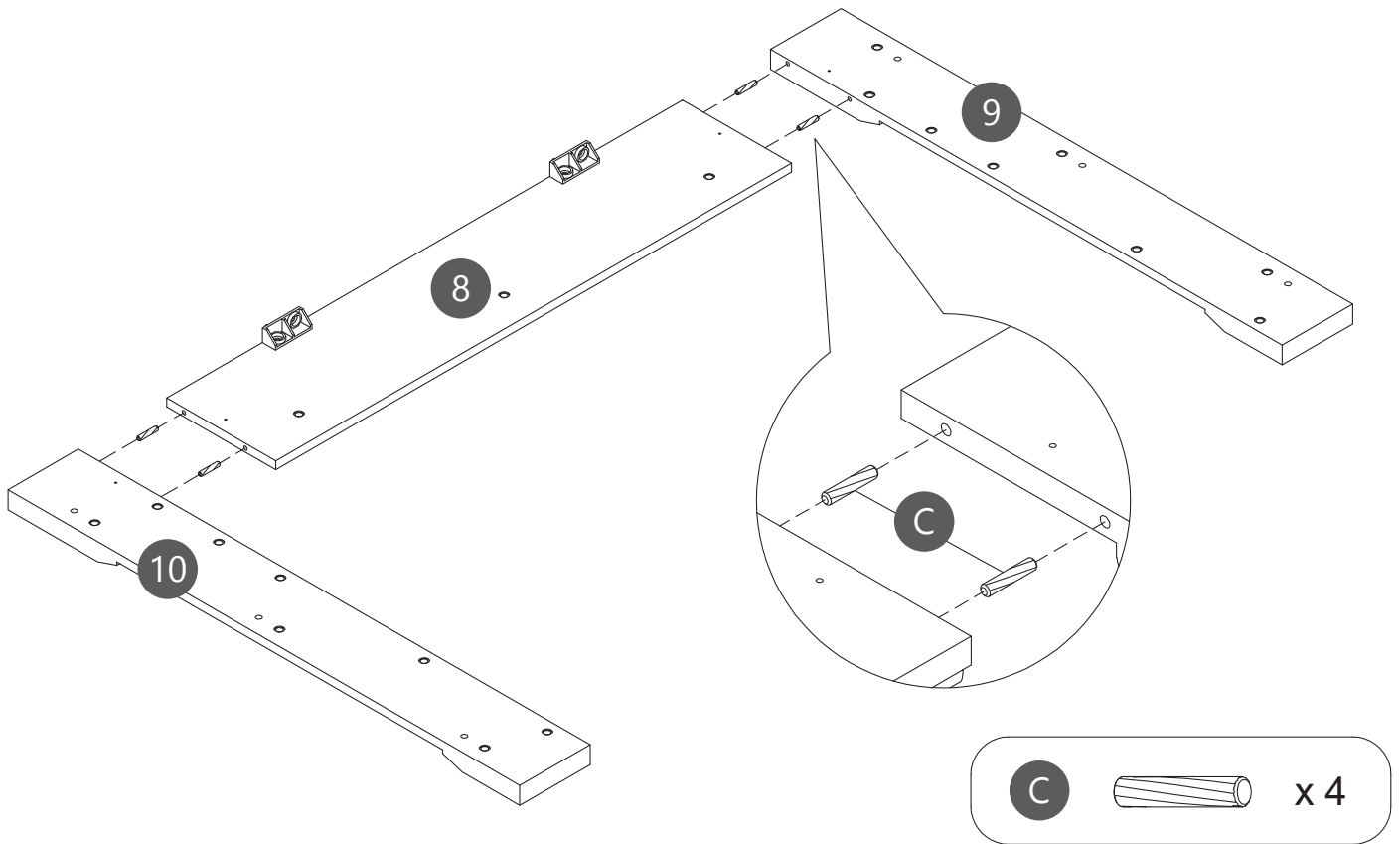
Step 8

Using Screws (G) and a 7-Shaped Wrench (P) secure Connector (H) to Board (8).



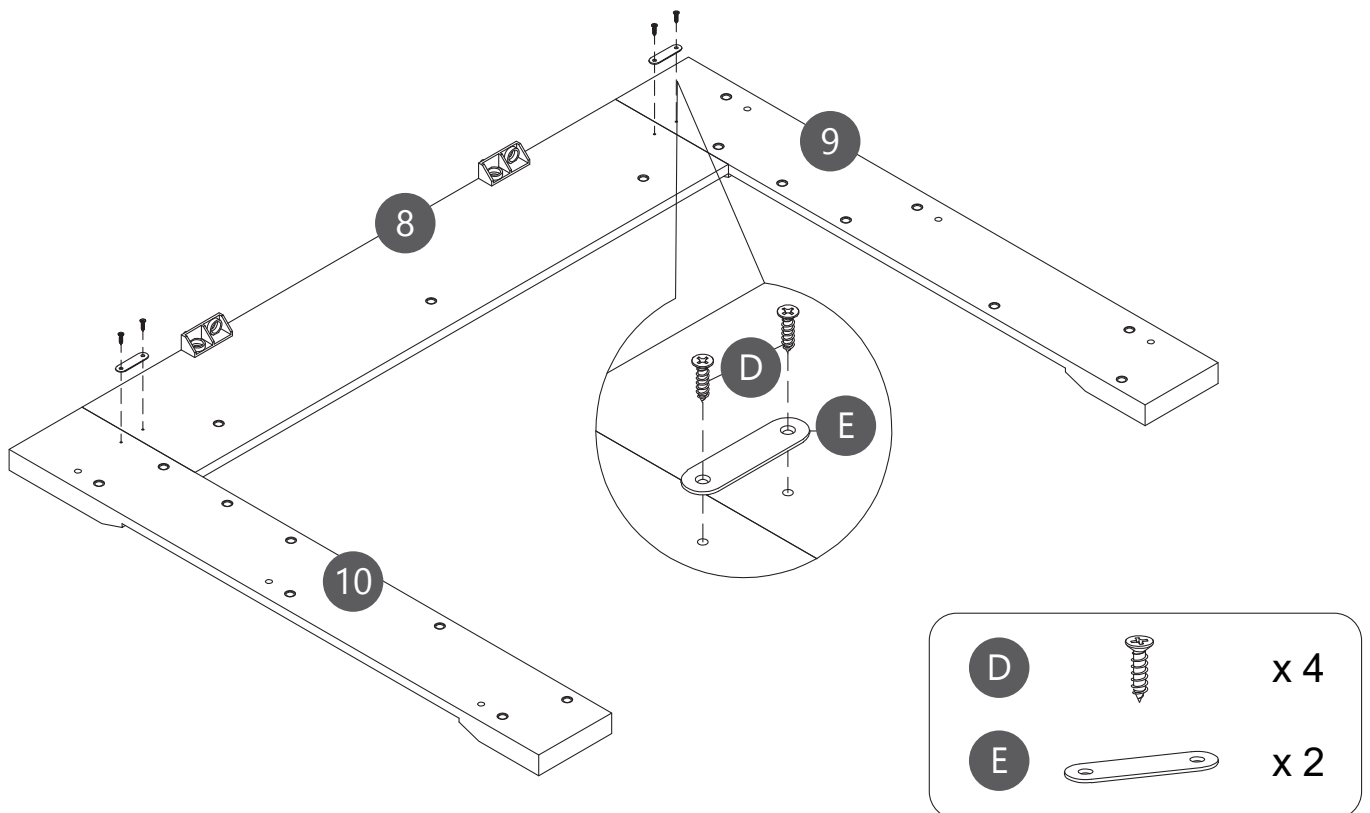
Step 9

Inserting Wooden Dowel (C) into Board (8), then attach Board (9&10) to Board (8).



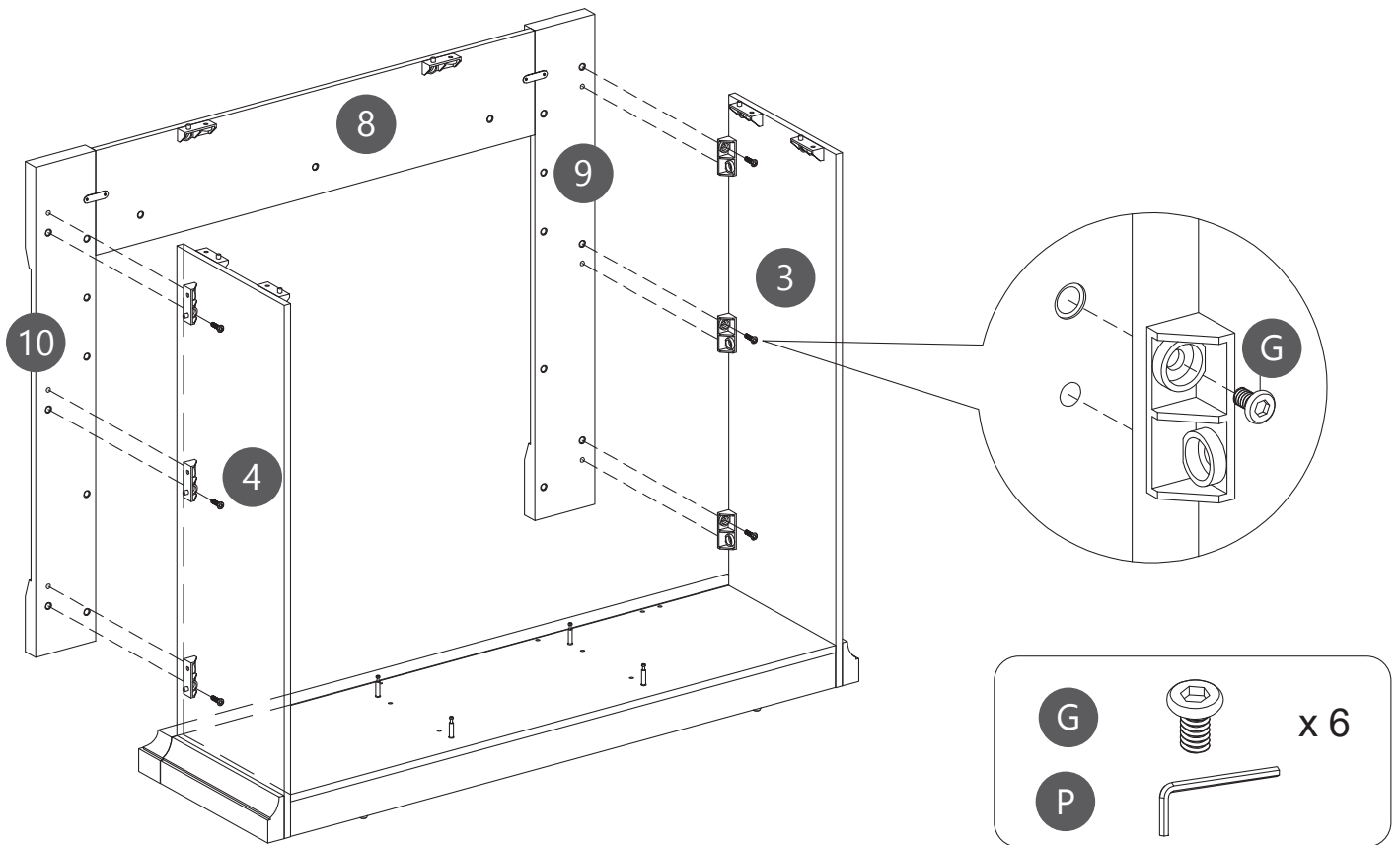
Step 10

Using Screws (D) secure Connector (E) to Board (8&9, 8&10).



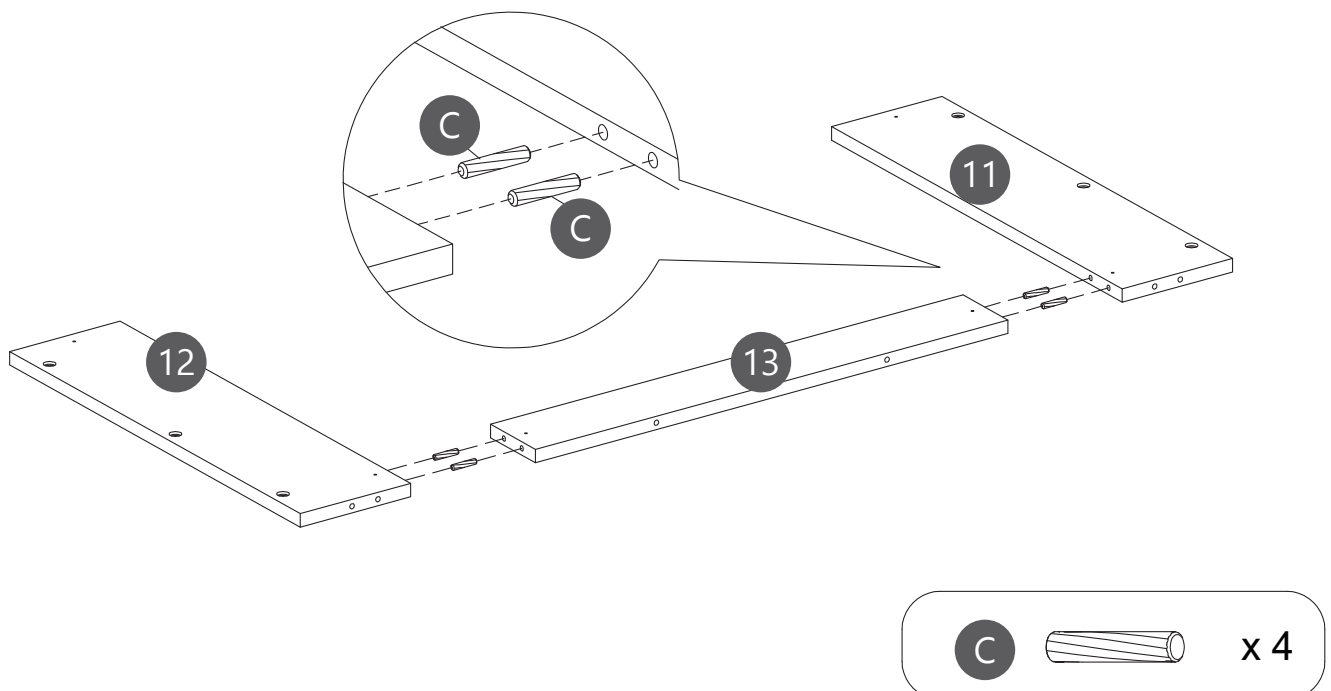
Step 11

Using Screws (G) and a 7-Shaped Wrench (P) secure Board (9&10) to Board (3&4).



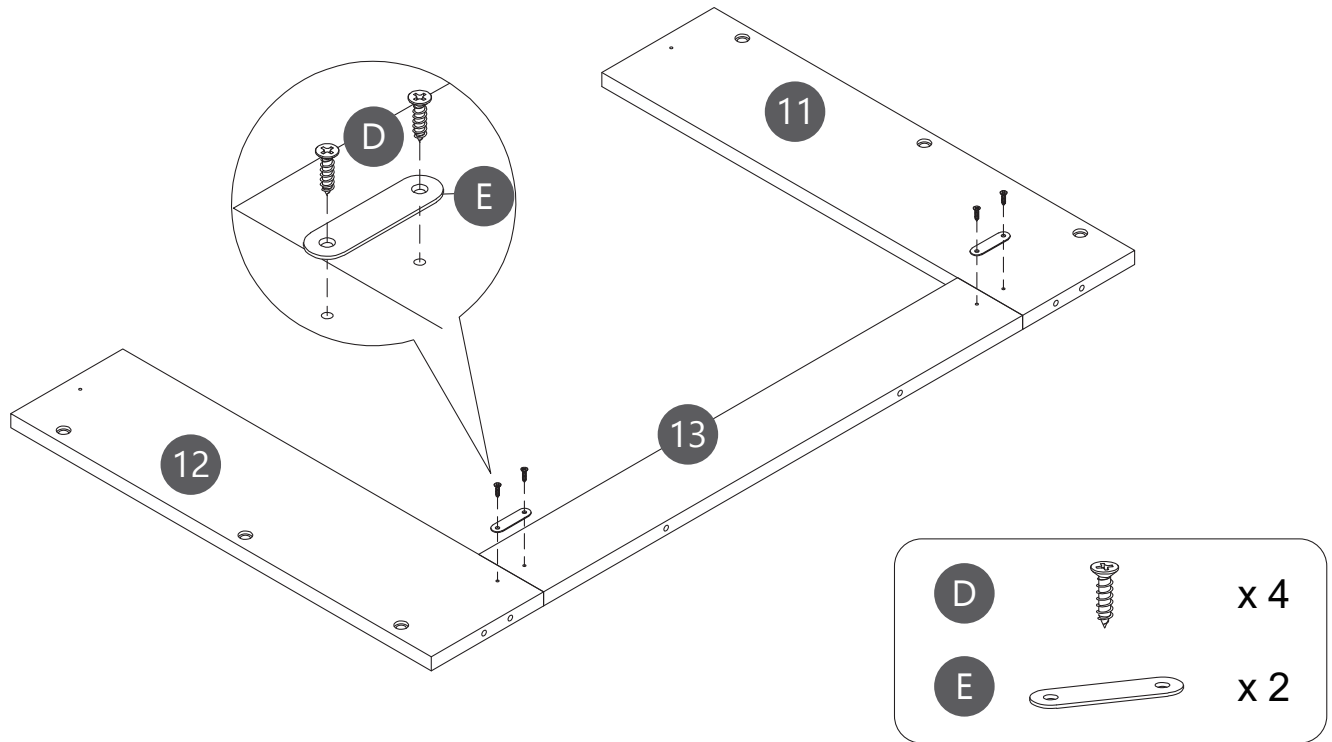
Step 12

Inserting Wooden Dowel (C) into Board (13), then attach Board (11&12) to Board (13).



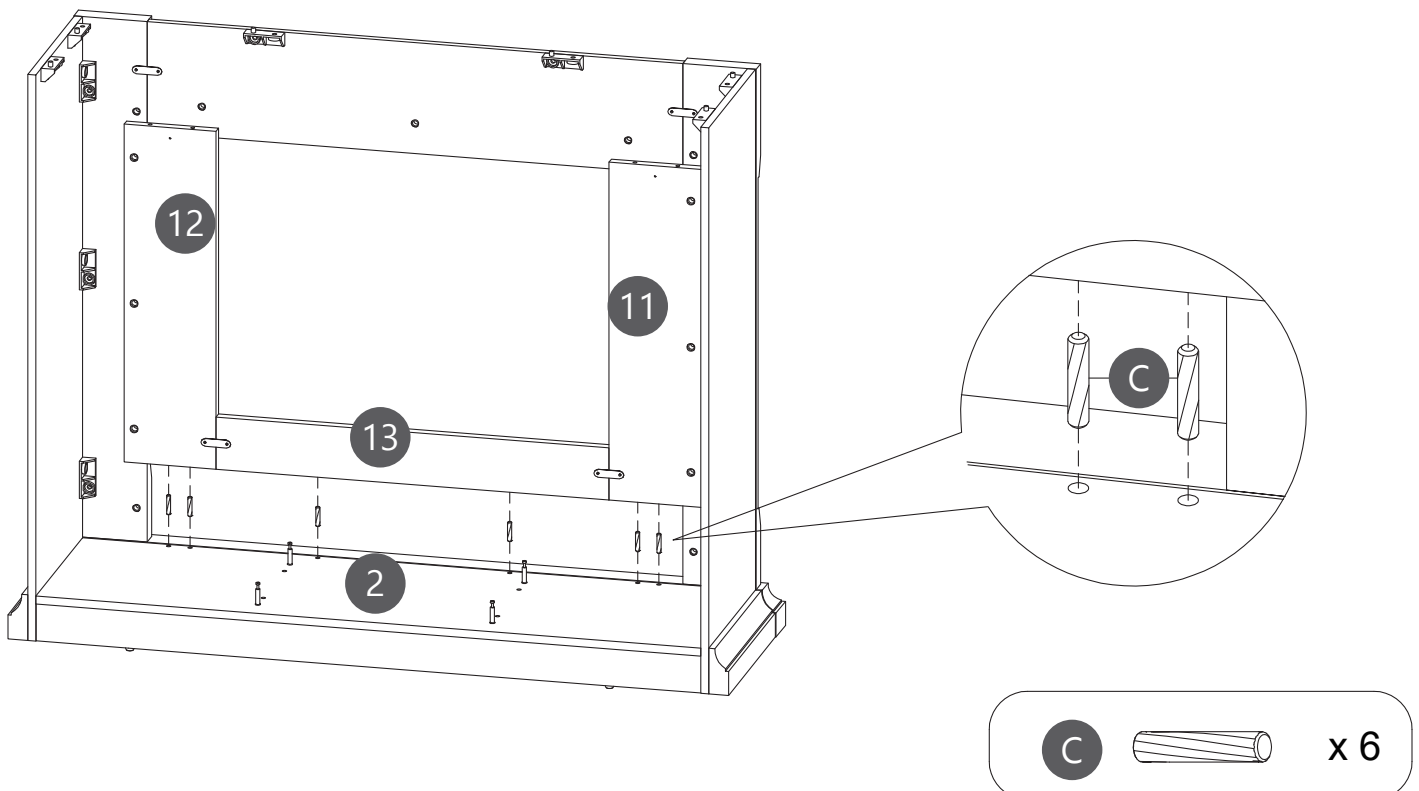
Step 13

Using Screws (D) secure Connector (E) to Board (⑪&⑬, ⑫&⑬).



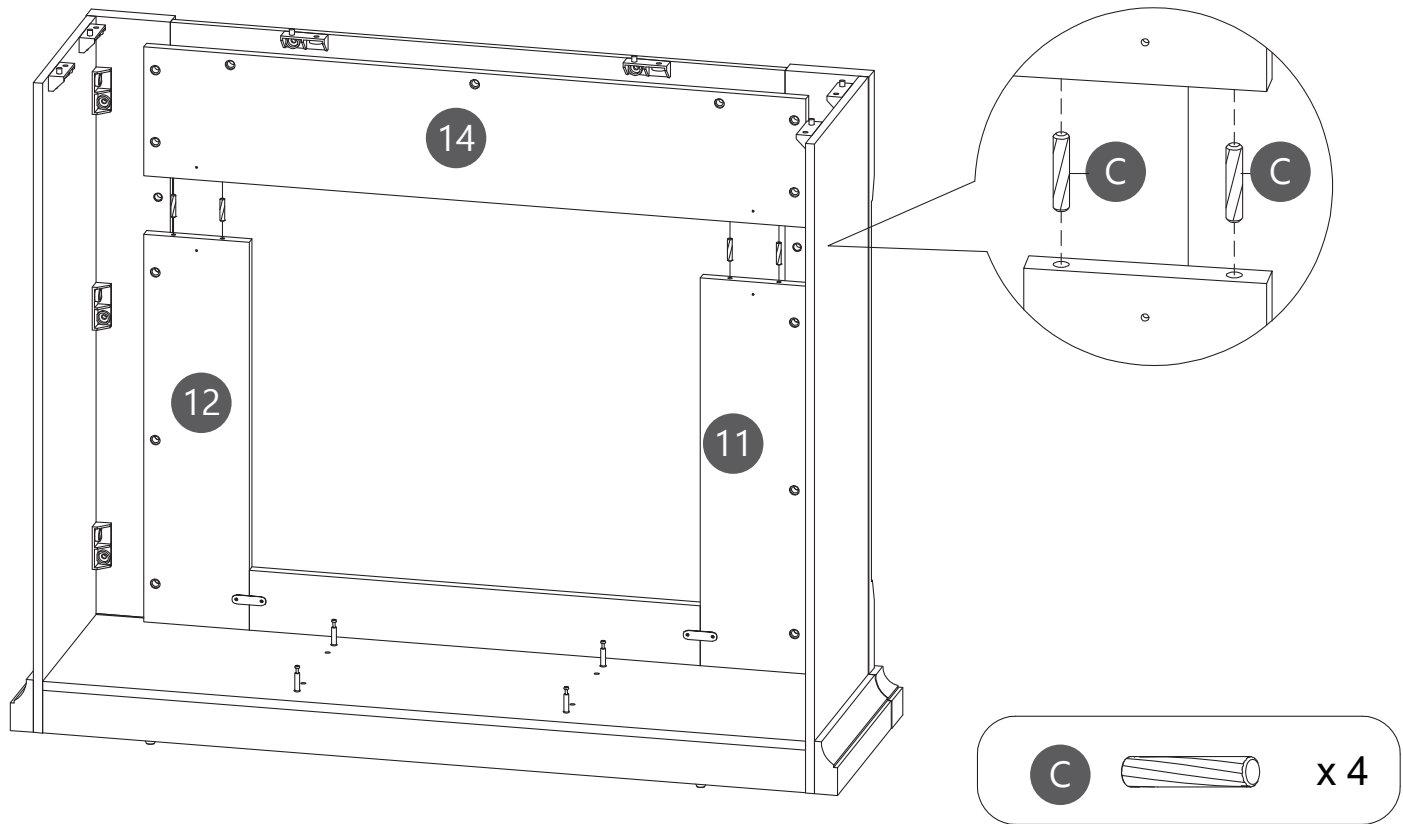
Step 14

Inserting Wooden Dowel (C) into Board (②), then attach Board (⑪&⑫&⑬) to Board (②).



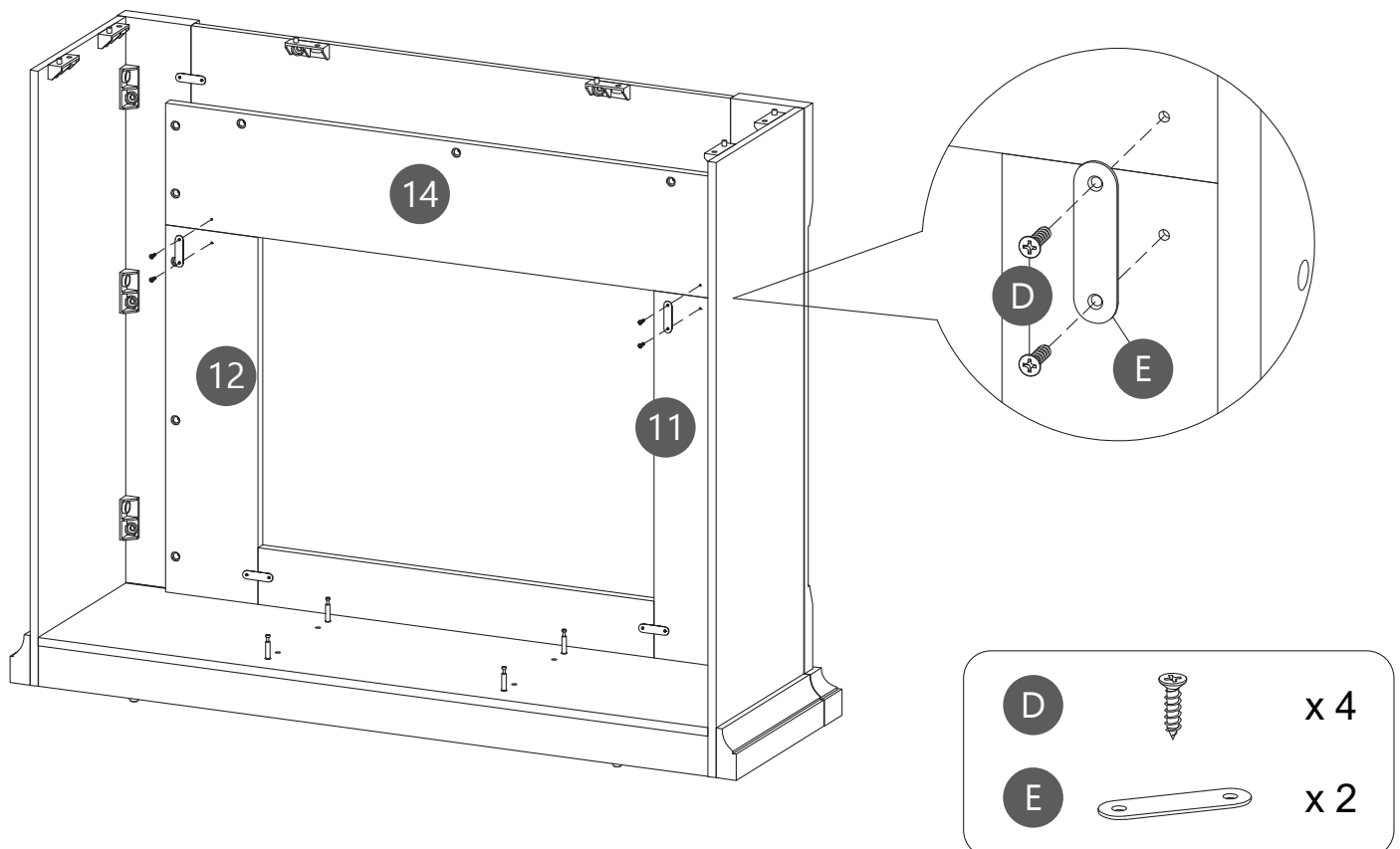
Step 15

Inserting Wooden Dowel (C) into Board (11&12), then attach Board (14) to Board (11&12).



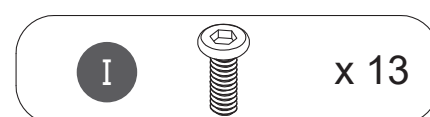
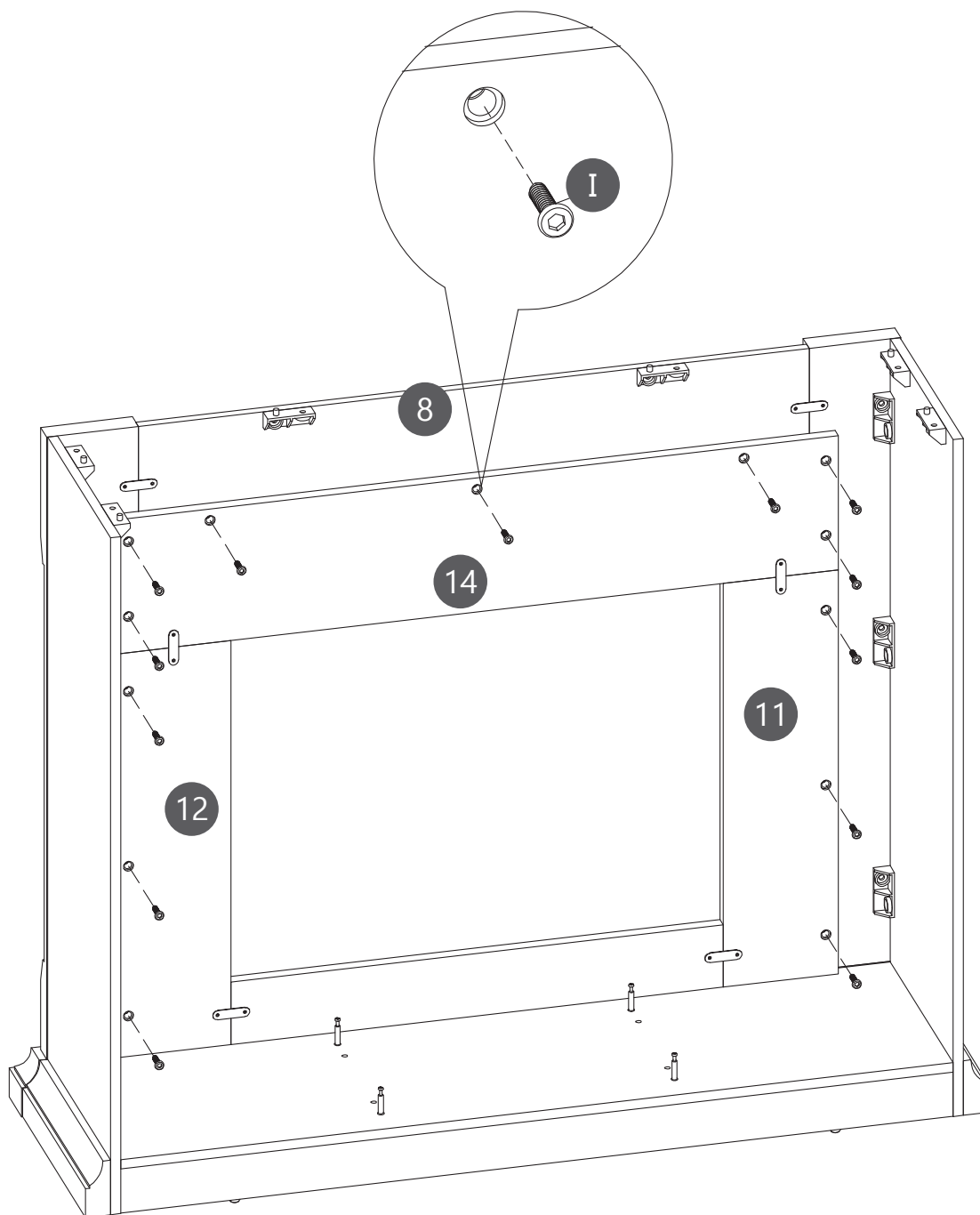
Step 16

Using Screws (D) secure Connector (E) to Board (11&14, 12&14).



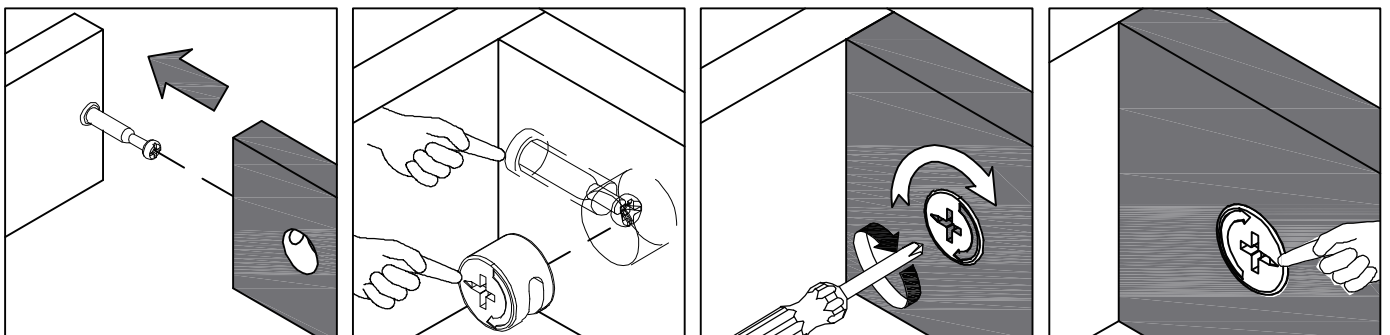
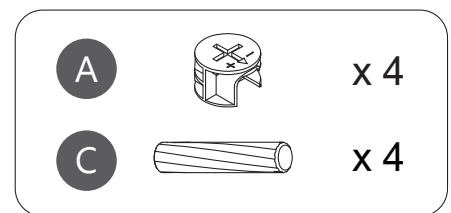
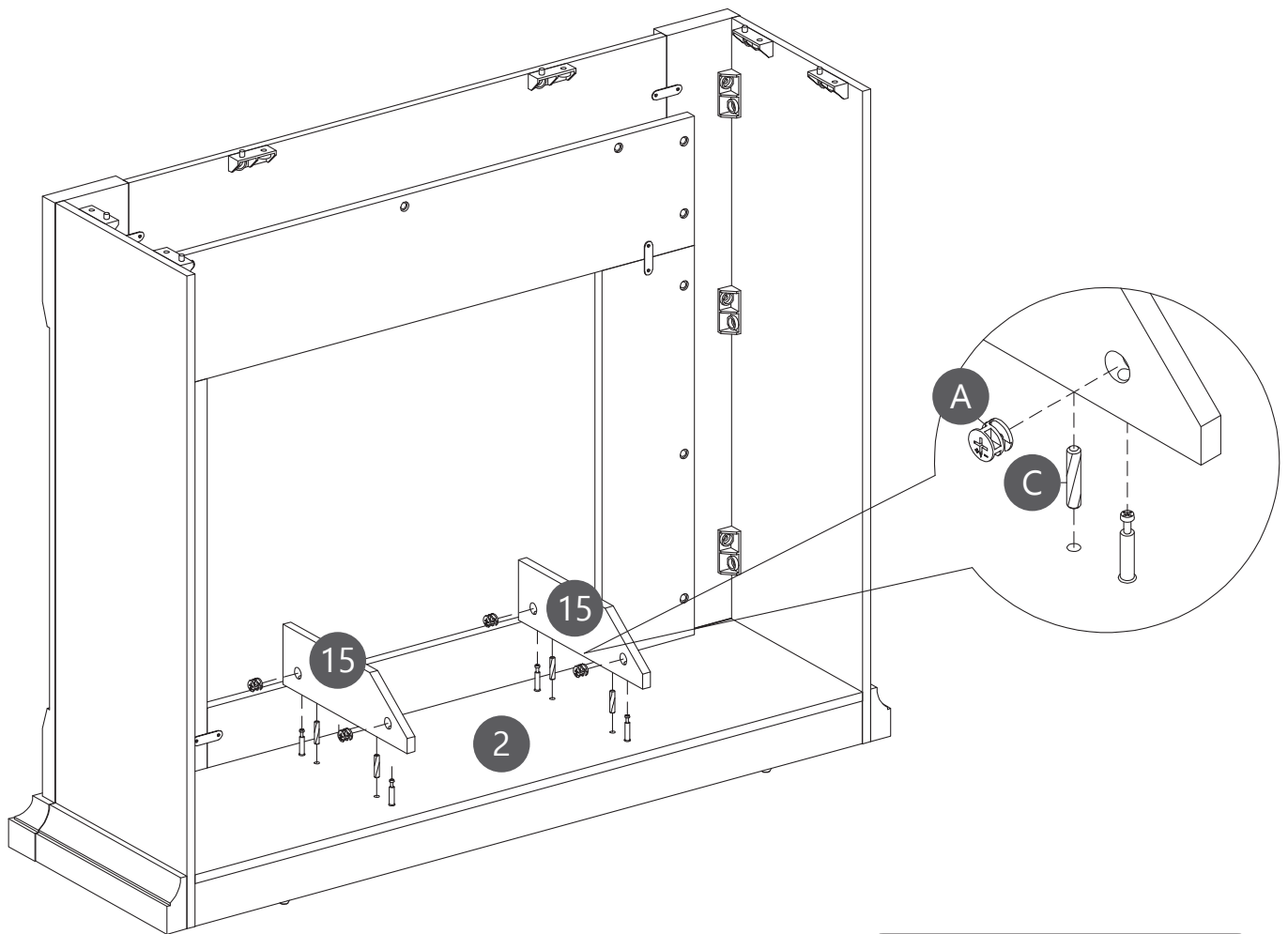
Step 17

Securing Screws (I) and a 7-Shaped Wrench (P) into Board (11&12&14).



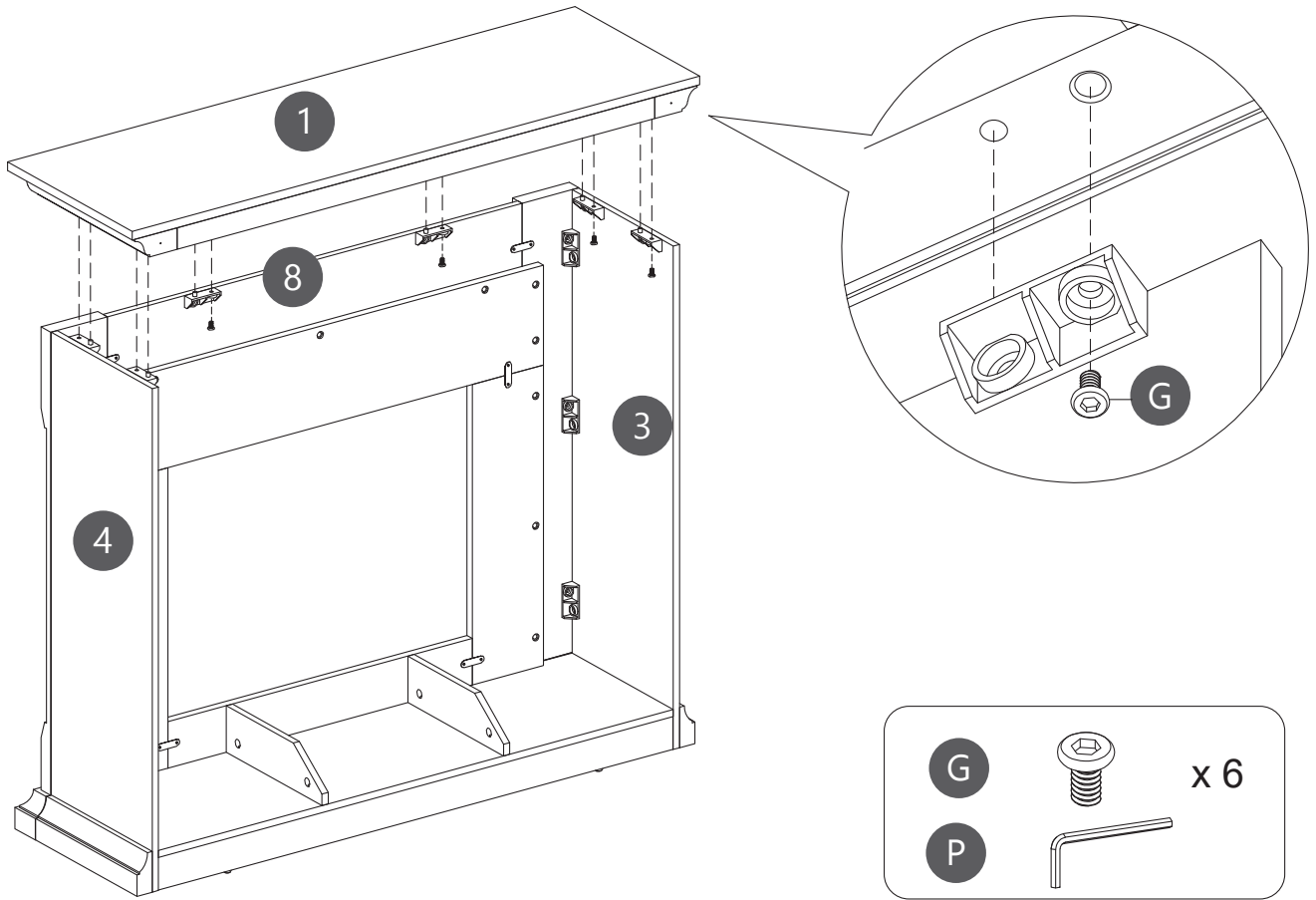
Step 18

Inserting Wooden Dowel (C) into Board (2), then attach Board (15) to Board (2).
Using Cam Lock (A) secure Board (15) to Board (2).



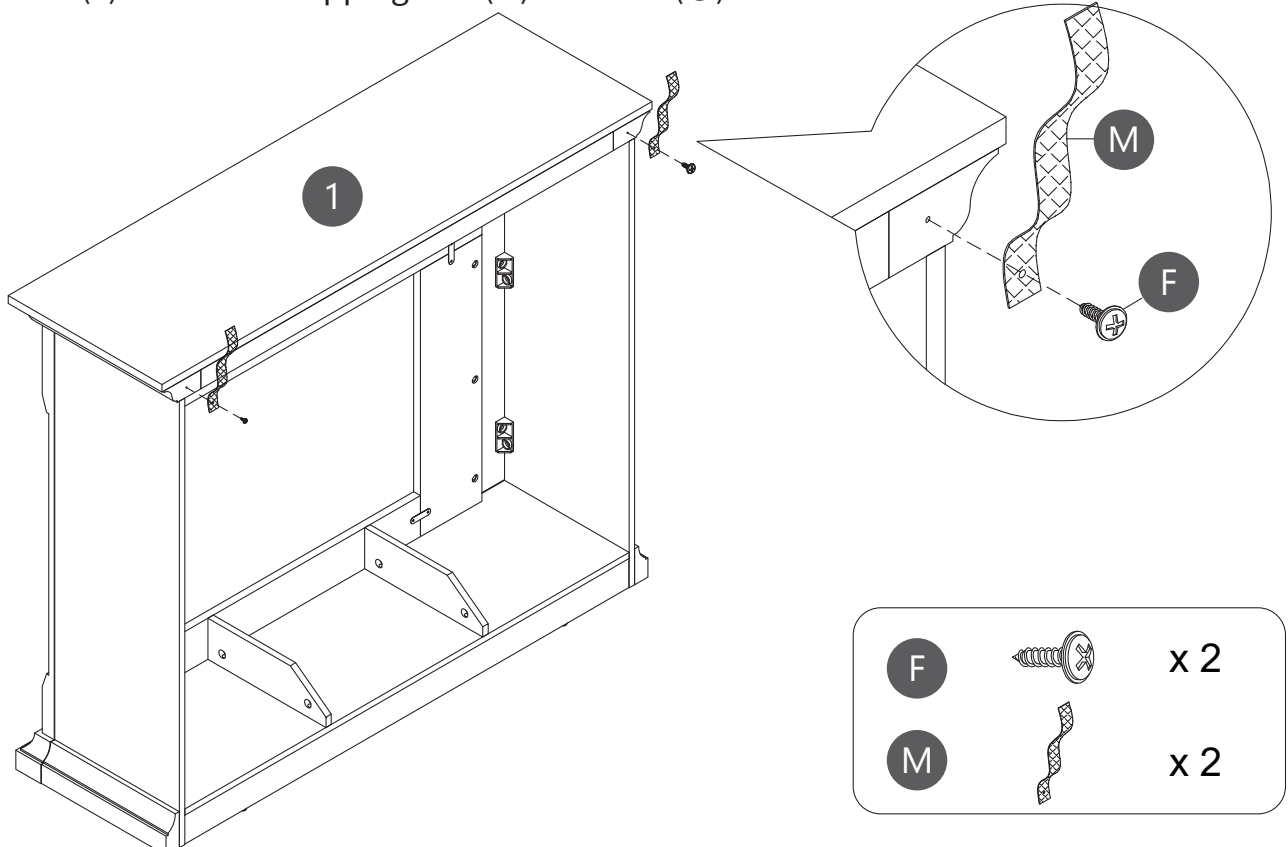
Step 19

Securing Screws (G) and a 7-Shaped Wrench (P) Through Connector (H) secure Board (①) to Board (③&④&⑧).



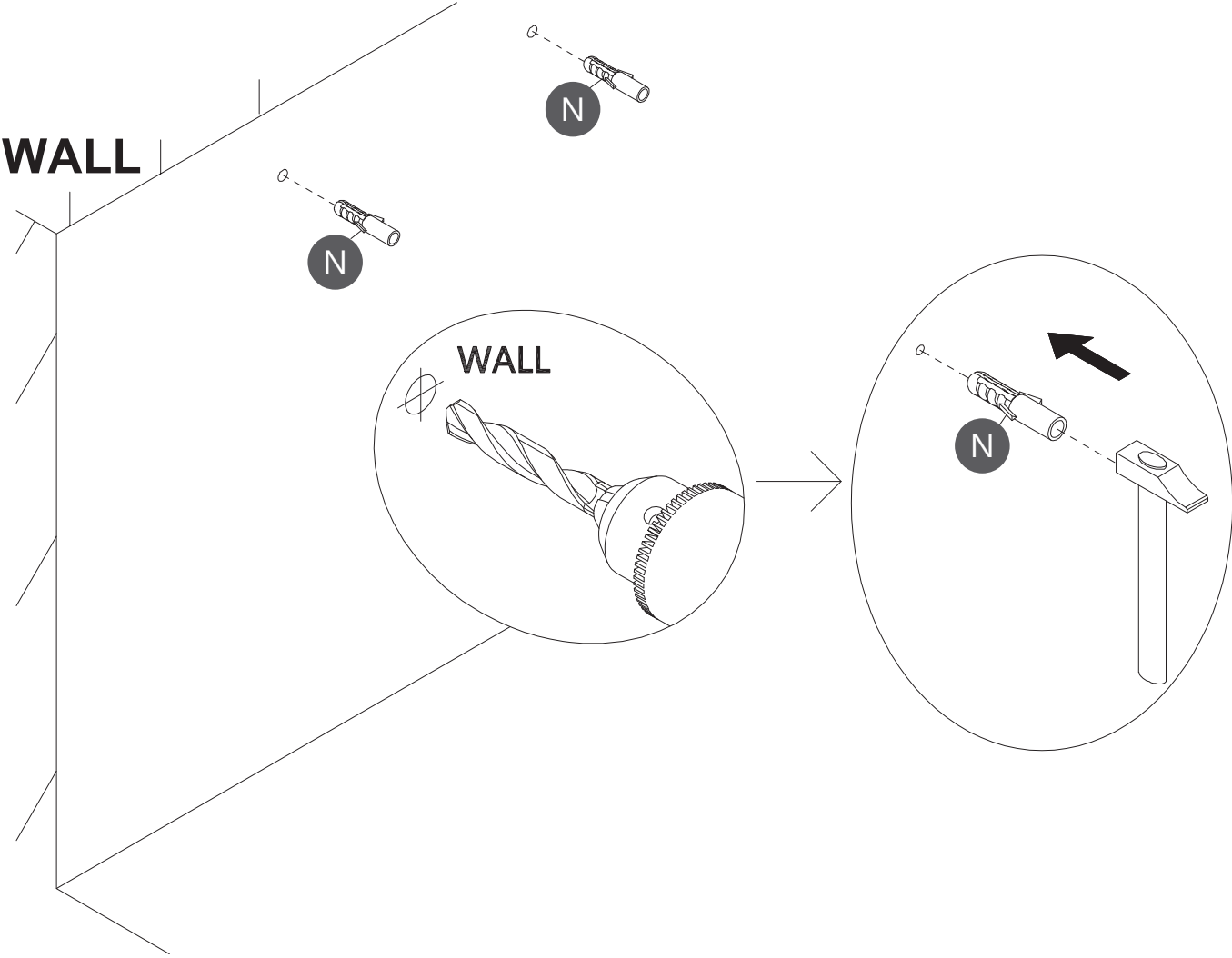
Step 20


Using Screws (F) secure Anti-tipping Belt (M) to Board (①).



Step 21

Drill 2 holes in the wall and Hammer the (N) in.



N  x 2

Step 22

Using Screw (O) attach Anti-tipping Belt (M) into Nut (N) to wall.

