

SOFA SIDE TABLE

Assembly Instructions

Attention



For safety and stability, we suggest you have to secure the anti-tip accessories to the wall to prevent tipping, injury, and property damage.

Warning

- Children are not allowed to assemble the product. During assembly, keep all small parts out of the reach of children, as it may be fatal to swallow or inhale them.
- Children are forbidden to climb or play on the product. Climbing or playing on the product may result in serious bodily injuries.

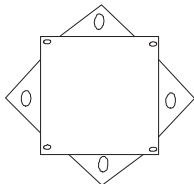
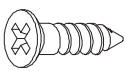

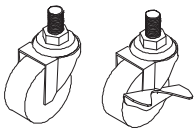

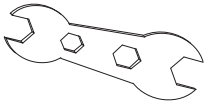

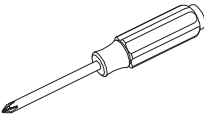

Note

- The product must be assembled and used in accordance with the provisions of the manual.
- Avoid long-term exposure to humid environments to prevent mildew.
- Keep the product away from fire sources and high temperatures. Do not expose the product to direct sunlight.
- Do not place any hot objects directly on the surface of the product.
- If there are any defective or missing parts after unpacking, please cease assembly immediately and contact us.
- Please assemble the item on a spacious surface; to avoid product damage, do not place the unwrapped product directly on the ground.
- Please do not stand or sit on the wooden boards.
- Please keep the product away from sharp, pointed objects and corrosive substances to prevent product damage.
- If you find that the table legs are loose during use, please tighten the screws as soon as possible to prevent the issue from persisting.

Parts List and Diagram

| Item no. | Reference Image | Qty. | Item no. | Reference Image | Qty. |
|----------|-----------------|------|---------------------|-----------------|------|
| 1 | | X1 | 3 | | X1 |
| 2 | | X1 | 4 | | X6 |
| Item no. | Reference Image | | Reference Image | | Qty. |
| 5 | | | | | X1 |
| | | | 28.0(L)*11.8(W) in. | | |
| 6 | | | | | X2 |
| | | | 26.8(L)*10.0(W) in. | | |
| 7 | | | | | X1 |
| | | | 31.5(L)*11.8(W) in. | | |

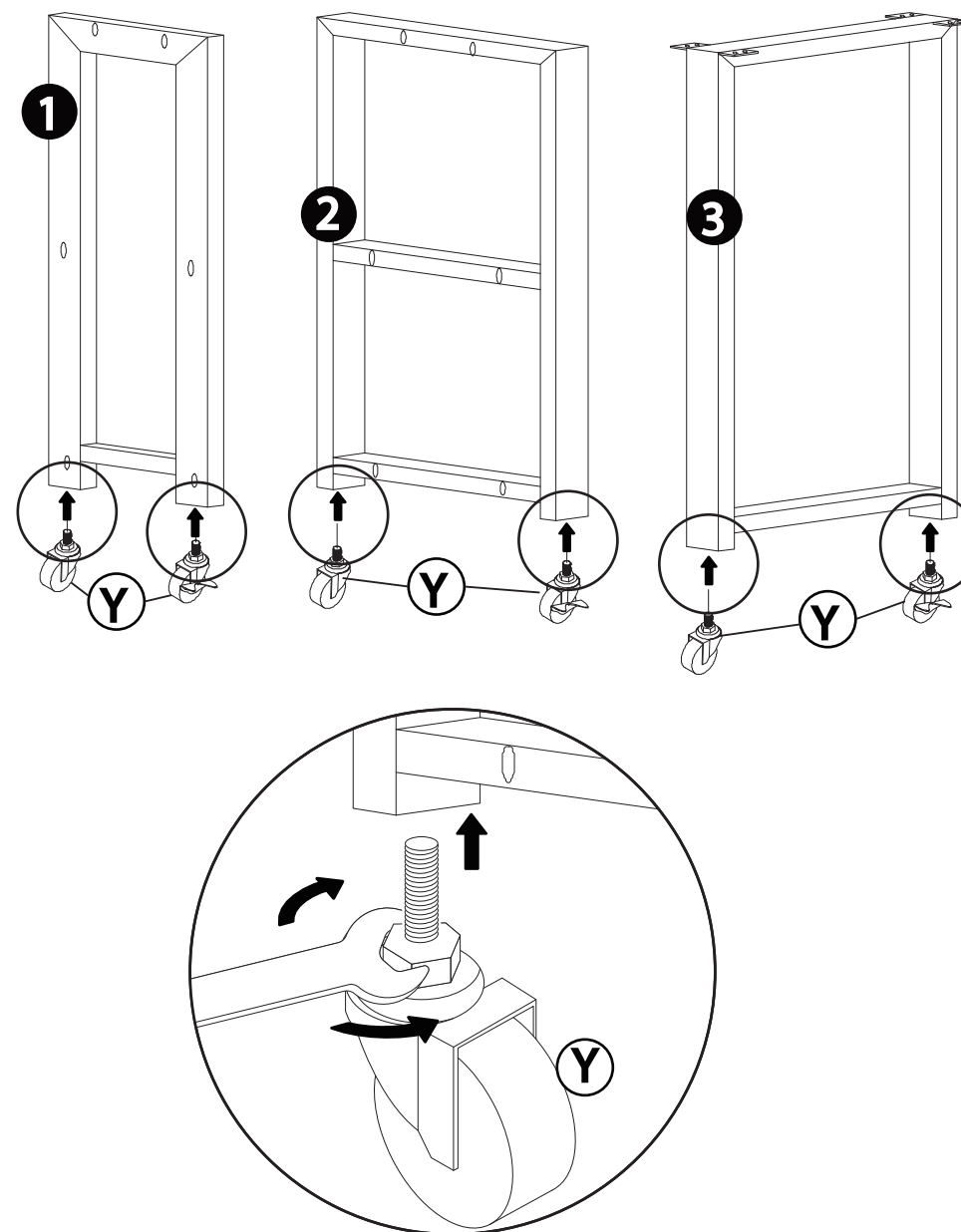
Parts List and Diagram

| Item no. | Reference Image | Qty. | Item no. | Reference Image | Qty. |
|----------|--|------|-------------------------------------|---|------|
| 8 |  | X1 | P |  M3.5x14 mm. | X8 |
| F |  M6x30 mm. | X14 | Y |  | X3 |
| G |  M6x35 mm. | X6 | |  Assembly Tool | X1 |
| I |  M6x55 mm. | X6 | |  Assembly Tool | X1 |
| N |  M6x10 mm. | X8 | *Package includes some extra screws | | |

Assembly Steps

STEP 1 **1** x 1 pc. **2** x 1 pc. **3** x 1 pc. **Y** x 3 pcs.

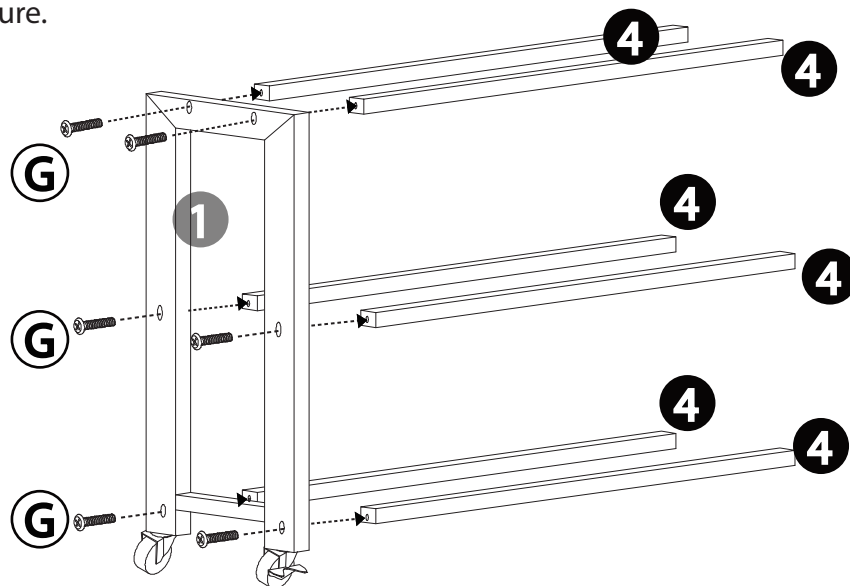
Attach Parts Y (3 pcs.) respectively onto the bottom of Part 1 (1 pc.), Part 2 (1 pc.), and Part 3 (1 pc.) with the wrench.



Assembly Steps

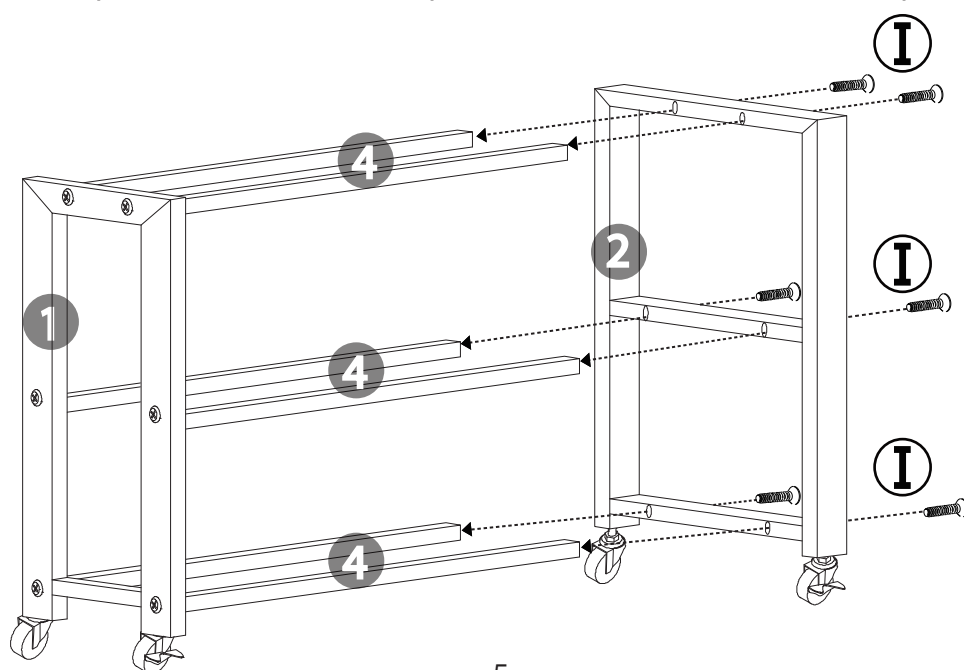
STEP 2 4 x 6 pcs. G x 6 pcs.

Use Parts G (6 pcs.) to connect Part 1 (1 pc.) with one end of Parts 4 (6 pcs.), as shown in the figure.



STEP 3 I x 6 pcs.

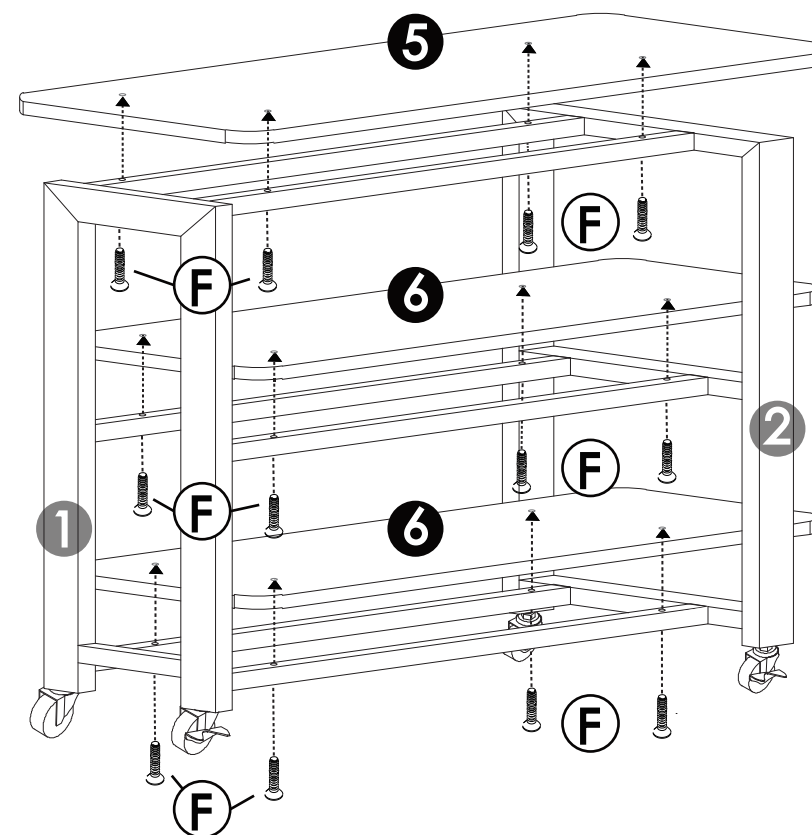
Use Parts I (6 pcs.) to connect Part 2 (1 pc.) with the other end of Parts 4 (6 pcs.).



Assembly Steps

STEP 4 5 x 1 pc. 6 x 2 pcs. F x 12 pcs.

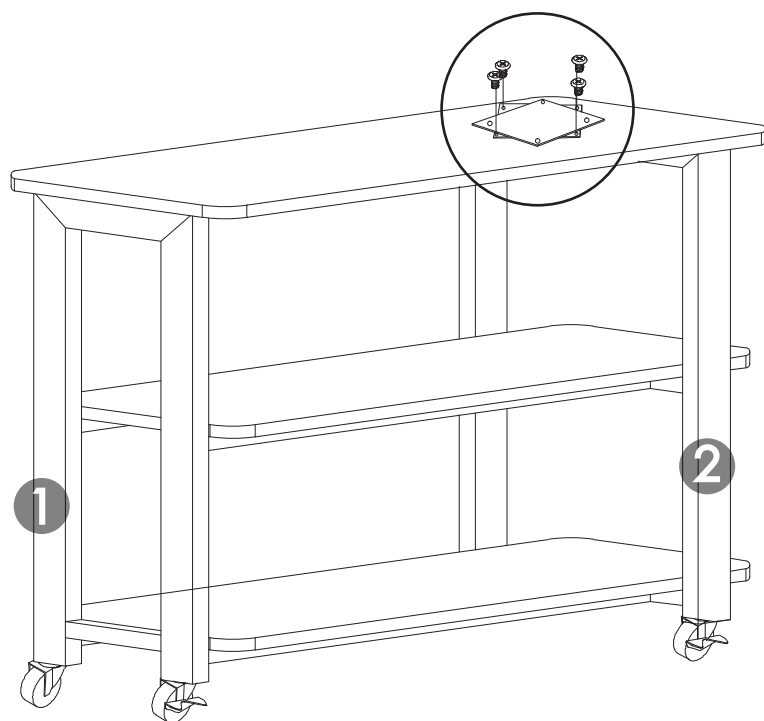
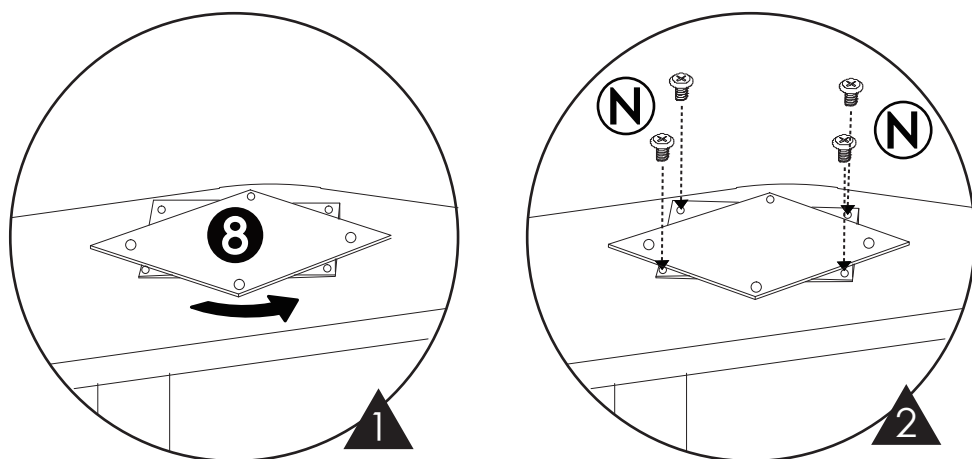
Use Parts F (12 pcs.) to assemble Part 5 (1 pc.) and Parts 6 (2 pcs.) onto Parts 4 (6 pcs.), as shown in the figure.



Assembly Steps

STEP 5 **8** x 1 pc. **N** x 4 pcs.

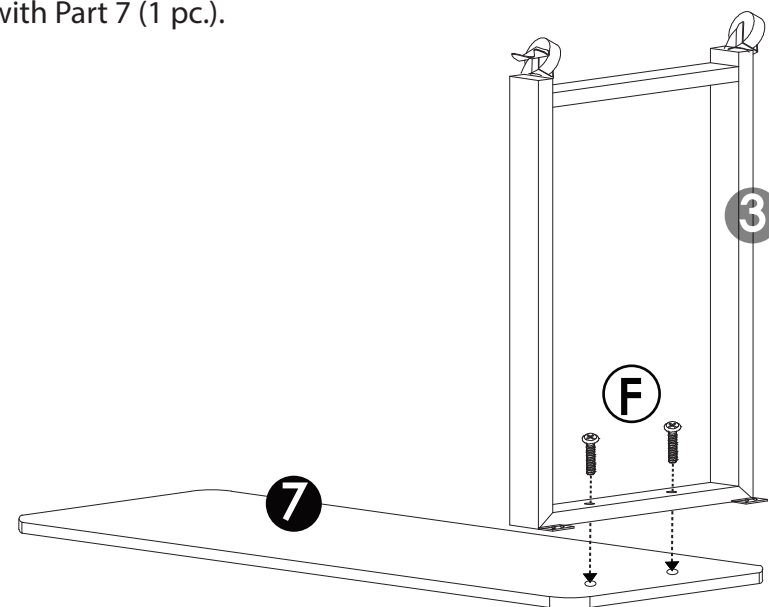
Put Part 8 (1 pc.) on Part 5 (1 pc.), as shown in the figure. Fix them with Parts N (4 pcs.).



Assembly Steps

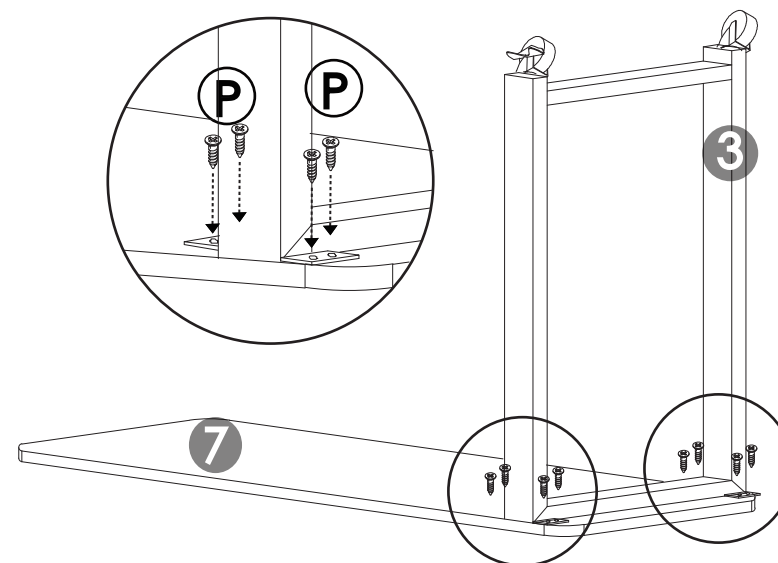
STEP 6 **7** x 1 pc. **F** x 2 pcs.

Place Part 7 (1 pc.) upside down on a flat surface. Use Parts F (2 pcs.) to connect Part 3 (1 pc.) with Part 7 (1 pc.).



STEP 7 **P** x 8 pcs.

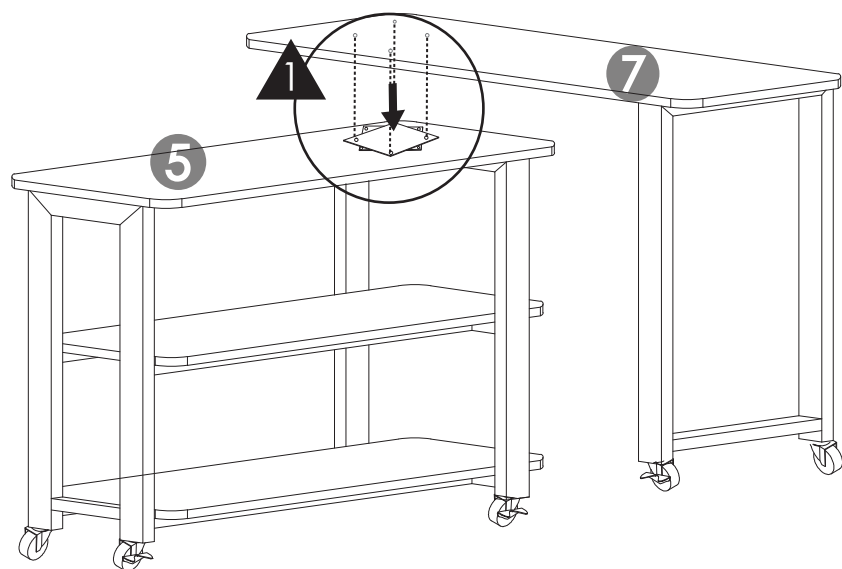
Use Parts P (8 pcs.) to tightly fix Part 3 (1 pc.) on Part 7 (1 pc.).



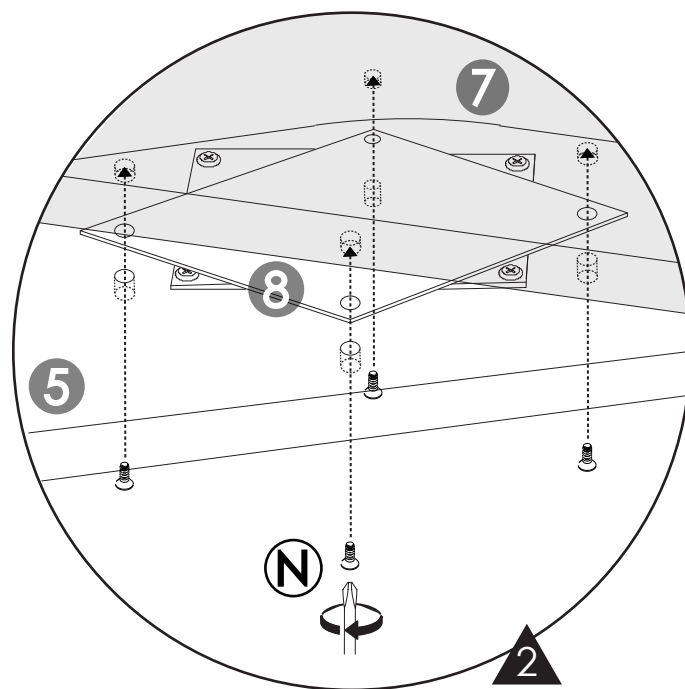
Assembly Steps

STEP 8 **N** x 4 pcs.

Connect Part 7 (1 pc.) with the other side of Part 8 (1 pc.). Use Parts N (4 pcs.) to fix them.



Position the upper table so that the holes in the lower table align with the screws on the bottom of the upper table. This will allow you to use a screwdriver by inserting it through the holes in the lower table, so that you are able to tighten the screws on the bottom of the upper table.



Assembly Steps

STEP 9 Installation Complete

For your convenience, this side table can be rotated 360 degrees. The wheels of the product contain a brake function. After the table is in position, you can lock the wheels to prevent the table from moving.

