

# **CONVERTIBLE PET YARD**

## **Owner's Manual**



**READ ALL INSTRUCTIONS BEFORE ASSEMBLY AND  
USE OF GATE. KEEP INSTRUCTIONS FOR FUTURE USE.**

Important: Keep these instructions for future reference

**ADDITIONAL EXTENSIONS SOLD SEPARATELY !**

 **WARNING :**

**This convertible pet yard is NOT to be used for Children.**

**This pet yard is to be used ONLY for Pets.**

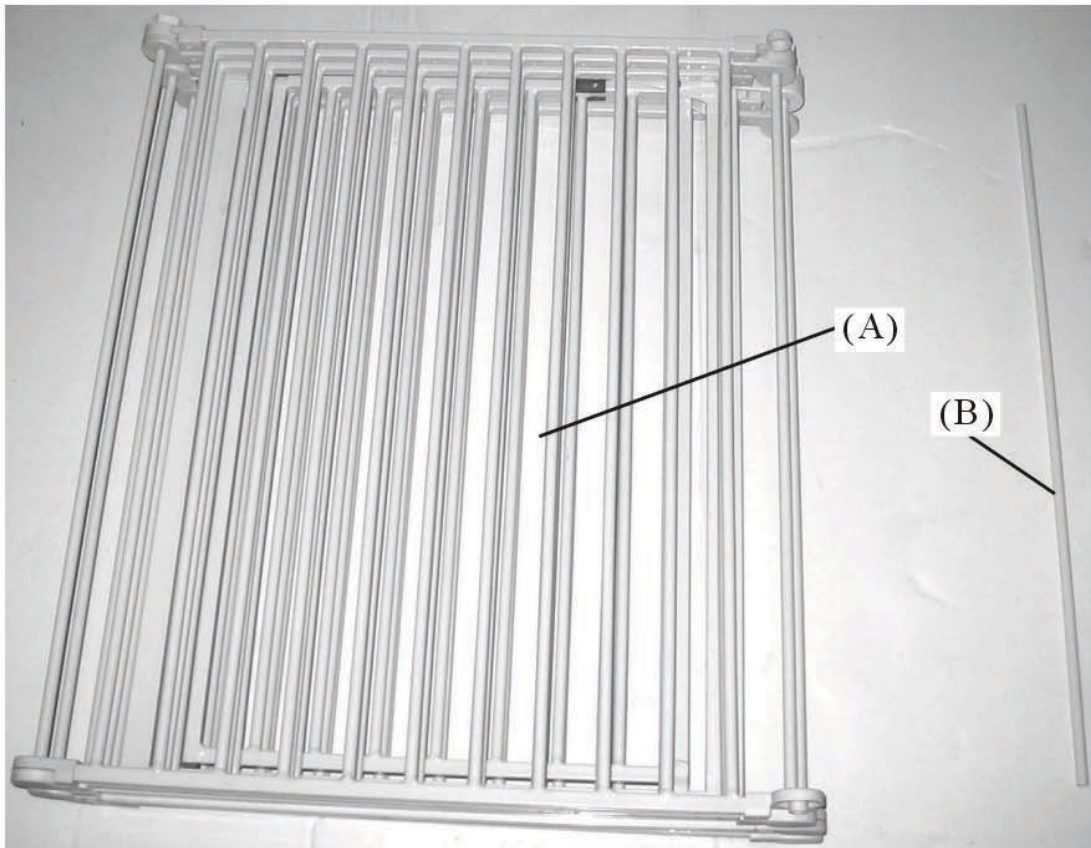
**Check the pet yard regularly to see if all the hardware and mountings are tightened.**

**To prevent serious injury or death, securely install the convertible pet yard or enclosure and use according to manufacturer's instructions.**

**Assembly and Installation Instructions**

**Please read these instructions carefully before installing your convertible pet yard.**

1. Check to make sure that you have the parts shown in picture (1), (2) & (3).



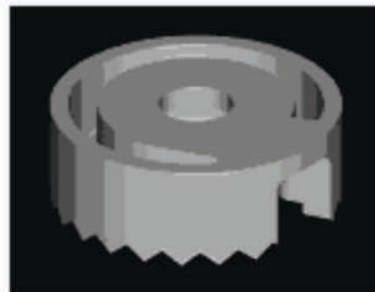
(A) Pet yard gate frame × 1 PCS    (B) Vertical tube × 1 PCS

(1)



(C) Locking Knob × 1 PCS

(2)

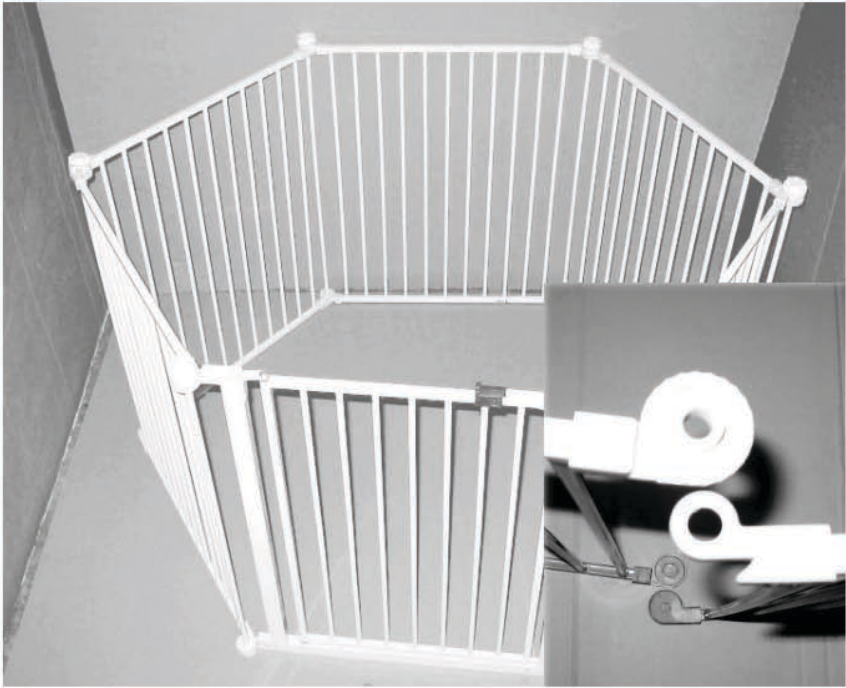
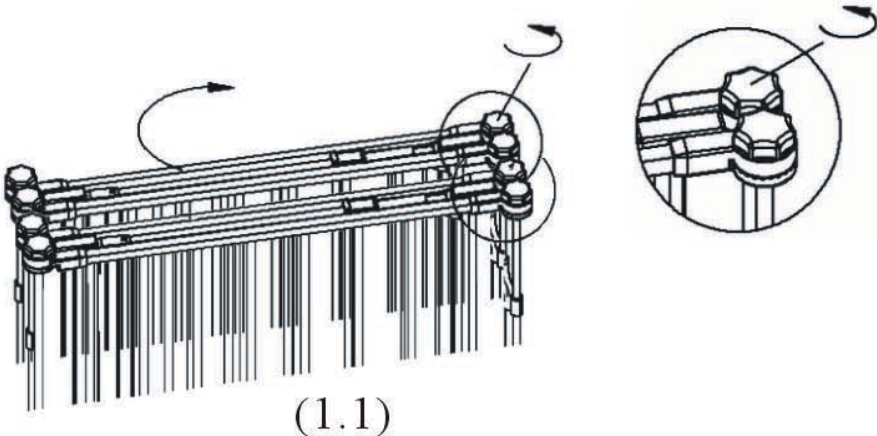


(D) Toothed Disc × 1 PCS

(3)

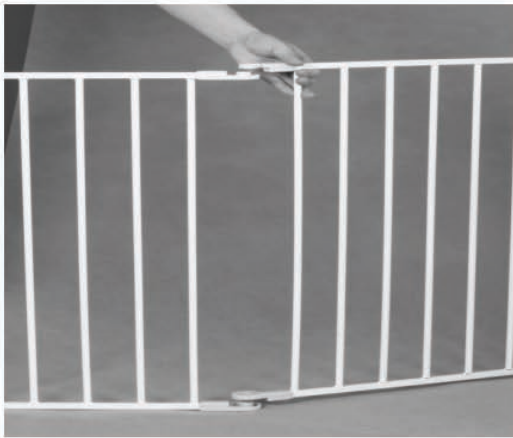
Step 1. Preparing to set up for pet yard

Begin by unfolding the pet yard gate frame. To do this simply loosen the Locking Knobs at each pivoting joint by turning the knob counter clockwise as shown in Diagram 1.1. Loosen the knobs enough to allow the pet yard gate frame to open freely as shown. Configure pet yard into desired shape. Example show in Diagram 1.2.



Step 2. To connect the ends together

At each end of the pet yard bring together and join the plastic joints as shown in diagram 2.1 and 2.2. Next, insert the vertical tube down through the pivot housing and into the hole in the lower joint as shown in diagrams 2.3, 2.4 and 2.5. You can now assemble the top locking assembly as shown in diagrams 2.6, 2.7 and 2.8.



(2.1)



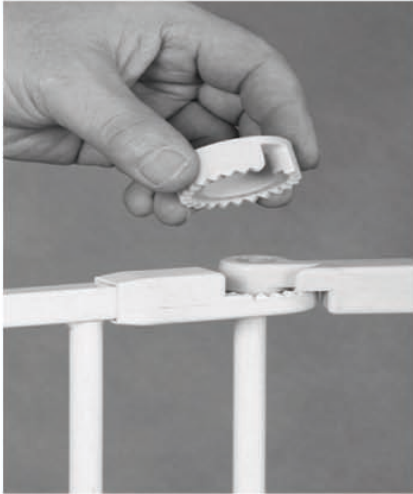
(2.2)



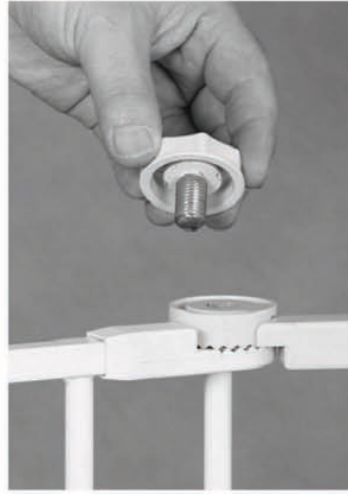
(2.3)

(2.4)

(2.5)



(2.6)



(2.7)



(2.8)

After the pet yard is assembled together, the entire pet yard will be as shown in diagram 2.9.



(2.9)

Step 3. To fix the pet yard configuration  
Now you can tighten the Locking Knobs by turning them clockwise. This will fix your pet yard in the configuration that you have positioned it.

**NOTE: To configure the pet yard into different shapes simply loosen the locking knobs, configure into desirable shape and re-tighten locking knobs.**

To fold your pet yard

Step 1: To fold your pet yard begin by loosening all of the locking knobs so the pet yard can move freely and becomes flexible at the joints.

Step 2: Remove one of the locking knobs from the pet yard and remove one vertical tube.

Step 3: You will now be able to pull the two plastic joints and the top and bottom of the pet yard apart.

Step 4: Fold and put away.

## **CARE AND MAINTENANCE**

Periodically check the pet yard for signs of damage, wear or for missing components.

Do not use if any part is missing, worn or damaged.

Check the pet yard regularly to make sure all the hardware and mountings are tightened.

Do not use abrasive cleaners or bleach.

Clean it by sponging with warm water and mild detergent.