

# EZ Tracer Set Up Guide

1



Carefully remove the projector from the box.

2



Attach the plug to the projector.

3



Select a bulb.  
We recommend an LED Bulb with at least 3,000 lumens for best performance\*

4



Screw the bulb into the socket.

5



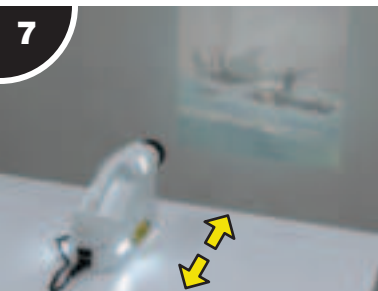
Plug the cord into a wall outlet.

6



Place the projector on top of your artwork.

7



Turn the projector on and move back and forth until you reach the desired projection size.

8



Focus the projection by turning the black ring.

\*Recommended bulb: Feit Electric LED Extra Bright 3,050 lumens.