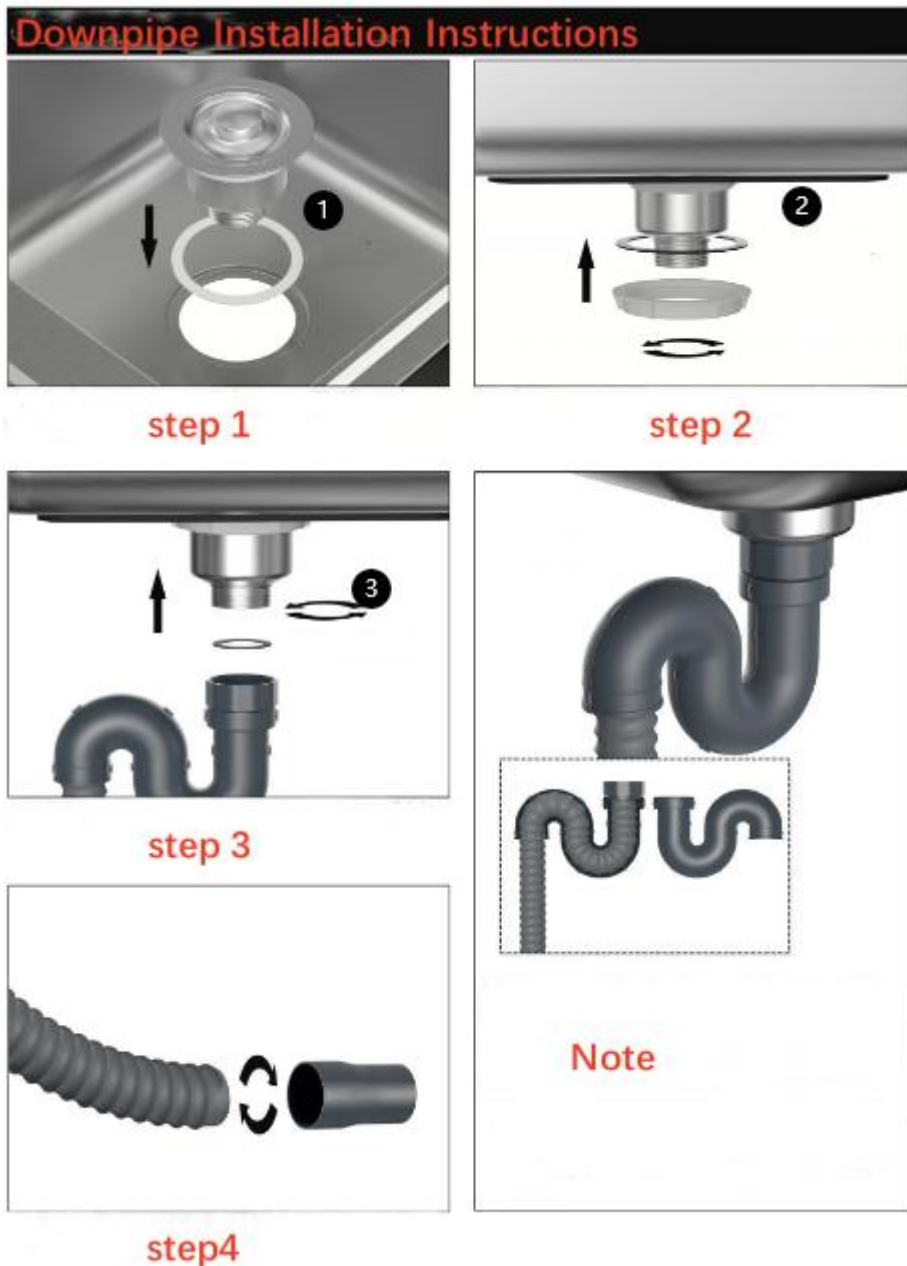


Installation Instructions

Downpipe Installation Instructions:



1. Place a white gasket and drainer in the sink at the downspout.
2. Place a black gasket under the sink and tighten it with a screw cap.
3. Place a small gasket at the S-shaped downpipe connection and tighten it.
4. Screw the tailpipe into the end of the drain in the opposite direction.

(① White Gasket ② Black Gasket ③ Black Sealing Ring)

Note: The S-shaped elbow can be split out. It has spliced seams in the middle. The elbow can be swung from side to side. If there is a leak, please check that the seal from the previous step is in place.

Bracket Installation Instructions:



1. Check all the installation accessories according to the picture.
2. Place your foot on the bottom shelf and lift the sink a little, then do the same on the other side and remove the sink.
3. Screw on the adjusting feet on the bottom shelf in turn.
4. Turn the bottom shelf so that the adjusting feet are facing downwards and attach four feet to each of the tube openings.
5. Attach the sink layer to the legs. Use your weight to press down from the top to the bottom to ensure the feet are in place.
6. The installation is complete.