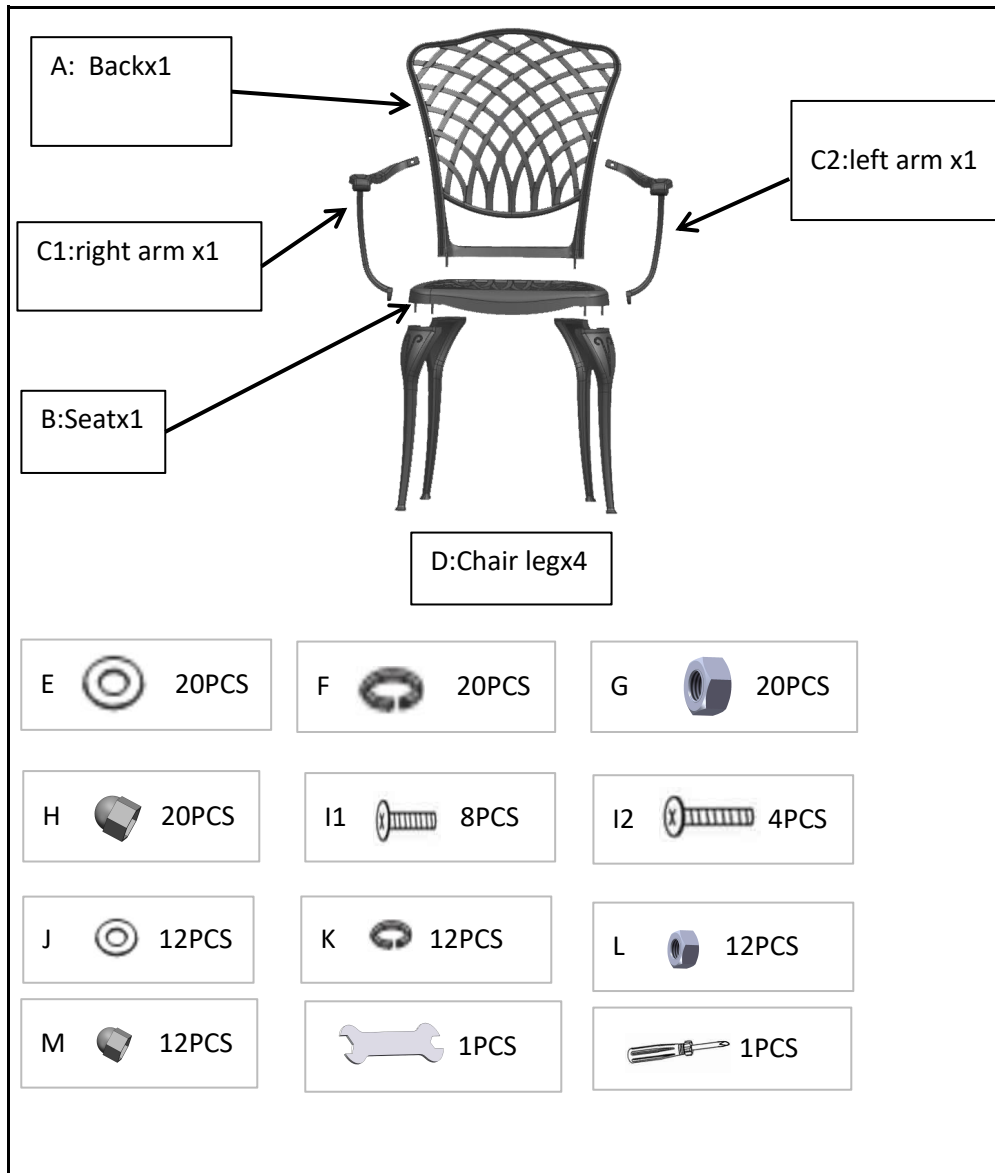


ASSEMBLY INSTRUCTION



Assembly Instruction

1. Assemble the back (A) to the seat (B) on an even soft clean surface using washer (E), spring washer (F), nut (G), DO NOT OVER TIGHTEN
 2. Attach the four legs (D) to the seat using washer (E), spring washer (F), nut (G).
 3. Attach the two arms (C1) to the back using stud (I2) washer (J), spring washer (K), nut (L), nut cap (M). Attach the two arms to the seat using stud (I1) washer (J), spring washer (K), nut (L), nut cap (M).
 4. Tighten all bolts. DO NOT OVER TIGHTEN.
- Warning: Do not force components and overtighten the nuts during assembly.**

ASSEMBLY INSTRUCTION

Step1



Step2

H



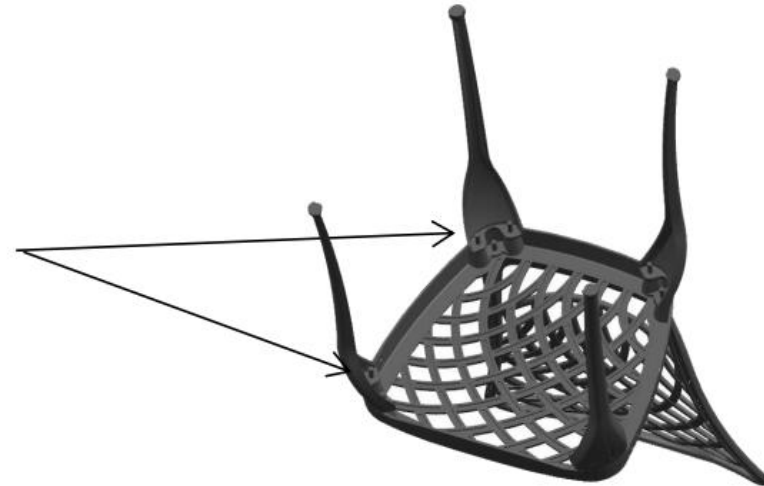
G



F

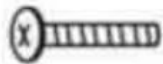


E



Step3

I2



M



L



K

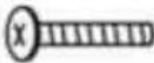


J



Step4

I1



M



L



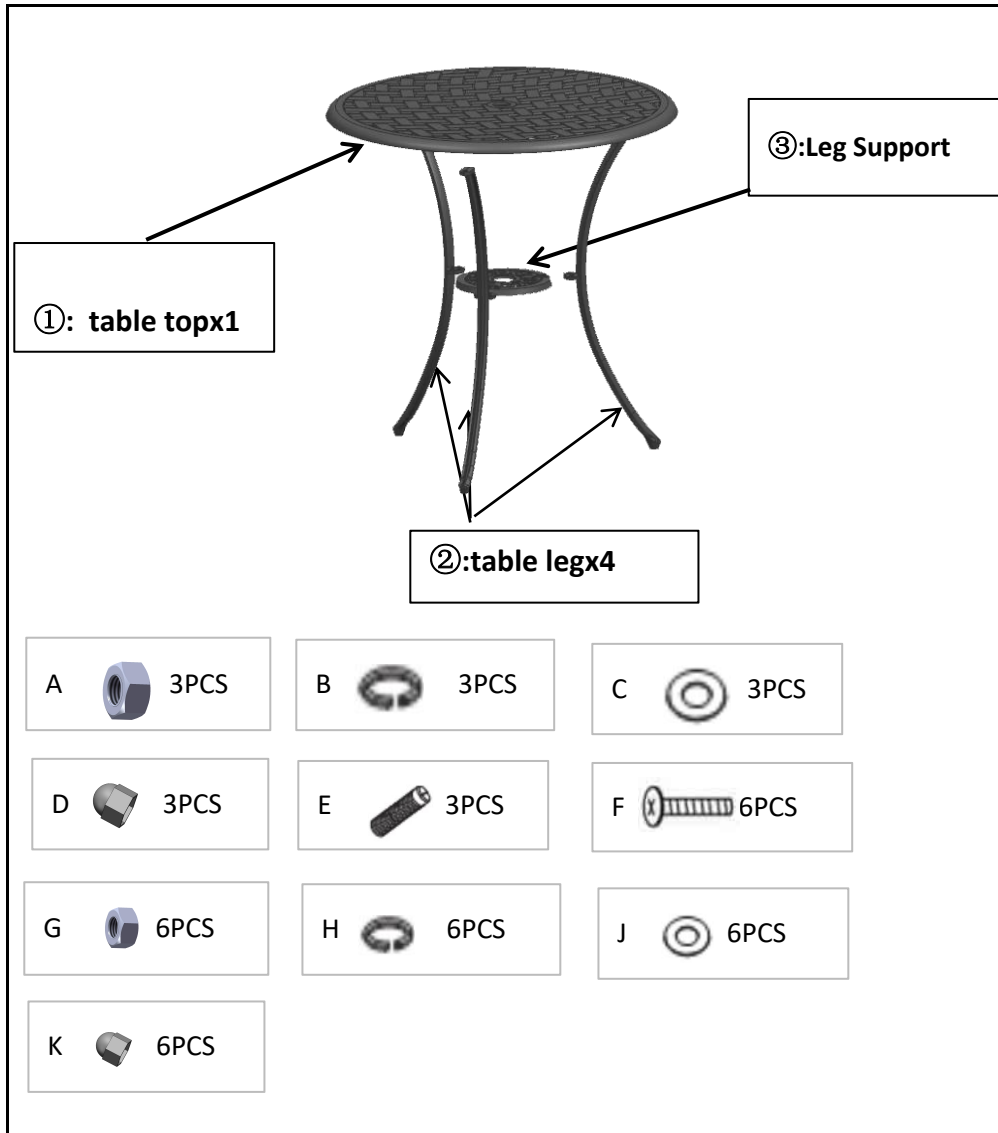
K



J



ASSEMBLY INSTRUCTION



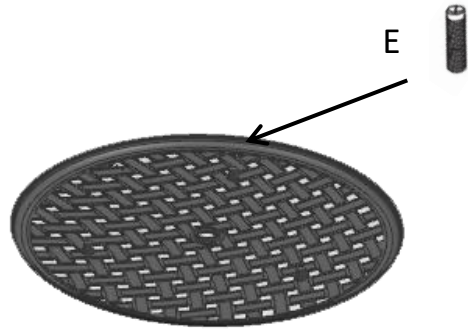
Assembly Instruction

- 1)&2): Turn over the table top. Attach the Stud M8(E) into the Nuts (inside table), Then, Attach table Legs (②) to the Studs on the Table Top (①) using Washers and Nuts (A,B,C). DO NOT over tighten.
- 3): Attach the Table legs Support (③) to the three Legs (②) using bolts, flat washer, spring washer and nuts (F,J,H,G) DO NOT over tighten.
- 4) Tighten all Nuts with Wrench. And Turn over the table. Adjust the pre-installed Rubber Pad in the legs until the Table is level with the ground, Tighten all the nuts and cover them with nut caps (D&K). Your table can use now.

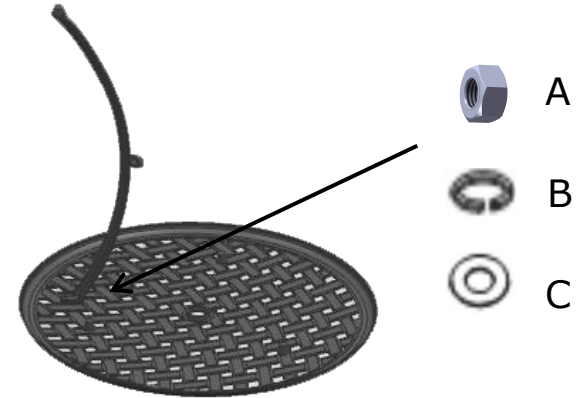
Warning: Do not force components and overtighten the nuts during assembly.

ASSEMBLY INSTRUCTION

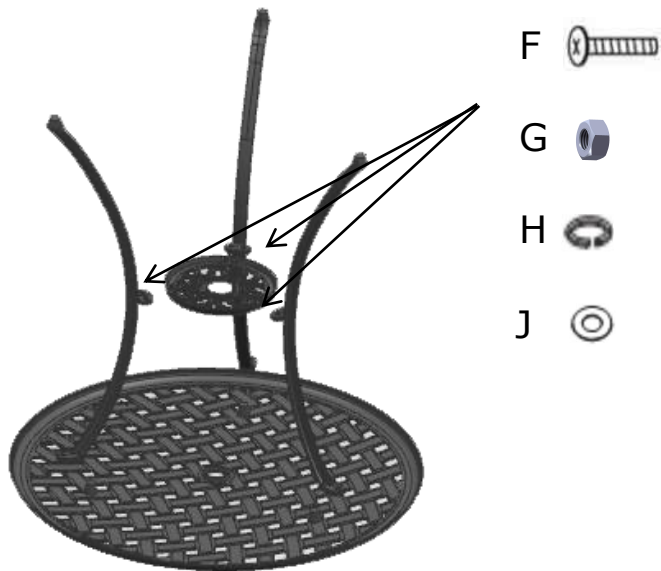
1)



2)



3)



4)

