

88 5555 33 Oval Dining Table

IMPORTANT NOTE

This product is made of sturdy, high quality aluminum and will provide years of enjoyment. Do not use power tools to assemble and only tighten bolts until they are snug. Over tightening can cause damage to the aluminum.

Carefully remove all the parts from the carton and put them individually on a soft cloth to prevent scratches or other damages occurring to the parts.

We have taken great care in the design of this product and request that you carefully and strictly follow our assembly instructions to ensure a completed product as it was designed.

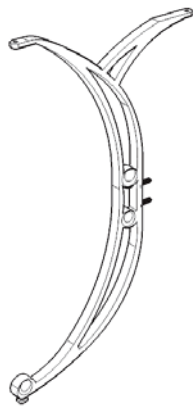
*Home
Styles*



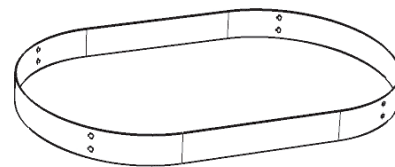
Part List



**A.
Top**
1 pc.



**B.
Leg**
4 pcs.



**C.
Stretcher**
1 pc.

Hardware List



Key Wrench
1 pc.



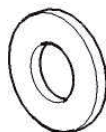
Spring Washer
16 pcs.(+1 extra)



**M8
Nut**
16 pcs.(+1 extra)



**M8x35
Bolt**
8 pcs.(+1 extra)



Flat Washer
16 pcs.(+1 extra)



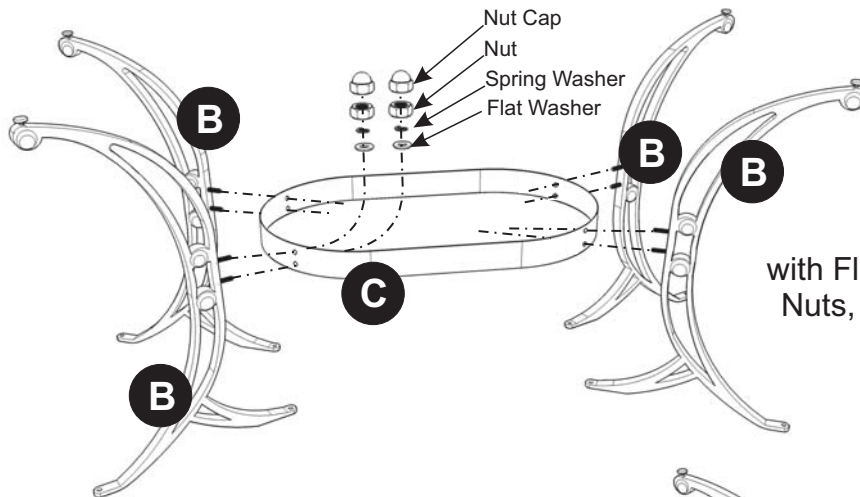
Nut Cap
16 pcs.(+1 extra)

Tools required for assembly : Slotted screwdriver, Level

Home Styles Consumer Assistance : www.homestyles-furniture.com,
servicedesk@homestyles-furniture.com, 888-680-7460, 877-831-0319

IMPORTANT

- * Please keep Key Wrench in a safe place as you may need to tighten up the Head Cap Bolts in the future.
- * Use a soft cloth between these parts and the floor.
- * Do not tighten up all the nuts until each part is properly assembled.
- * Do not use power tools to assemble and do not over tighten the bolts and nuts.
- * After assembly, item must be level to work properly. Use the included adjustable levelers to level.



STEP 1

Attach Legs (B) to Stretcher (C) with Flat Washers, Spring Washers and Nuts, tightening the nuts only half way.

STEP 2

Place Top (A) upside down on a soft cloth.

Insert all Bolts into the pre-drilled holes of Top (A). (See Figure 1)

Attach unit to Top (A) with Flat Washers, Spring Washers and Nuts, tightening the nuts only half way.

Tighten all Nuts used in Steps 1 and 2 with Key Wrench.

Cover all Nuts with Nut Caps.

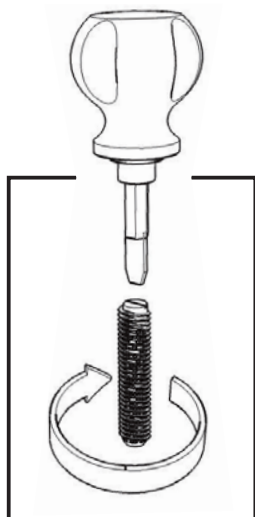
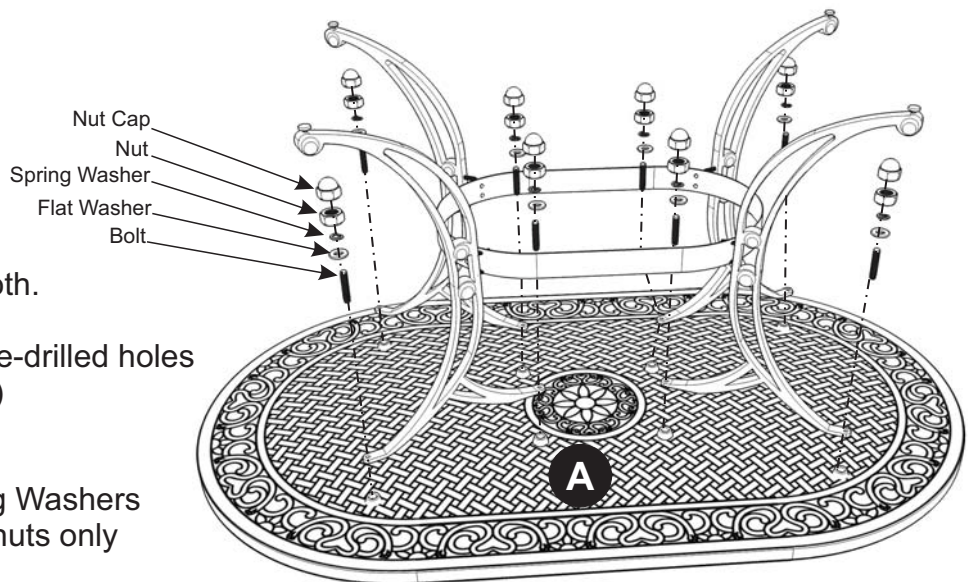


Figure 1

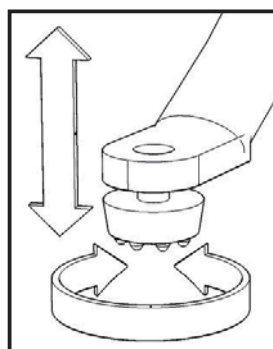


Figure 2

STEP 3

Turn table over to its' upright position.

To level the table, adjust the adjustable levelers on the bottom of legs. (See Figure 2)