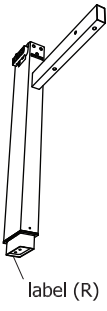


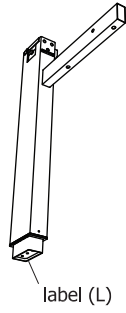
# Height Adjustable Split Top Desk Assembly Guide

A



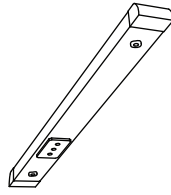
QTY: 1

B



QTY: 1

C



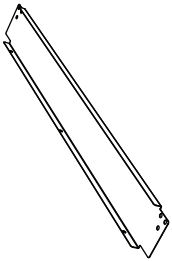
QTY: 2

D



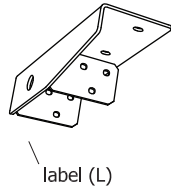
QTY: 1

E



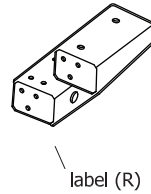
QTY: 1

F



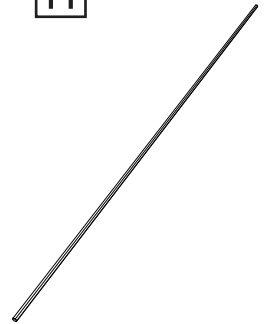
QTY: 1

G



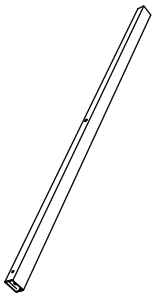
QTY: 1

H



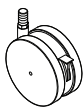
QTY: 1

J



QTY: 1

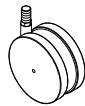
K



NOTE: casters with lock

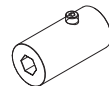
QTY: 2

L



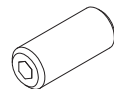
QTY: 2

M



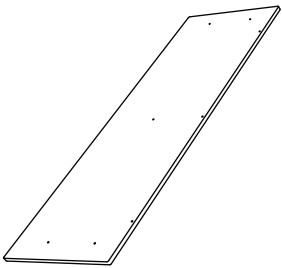
QTY: 1

N



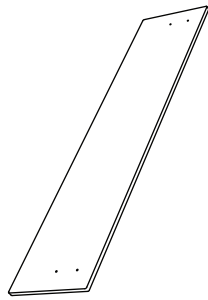
QTY: 1

P



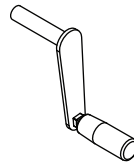
QTY:1

Q



QTY:1

R



QTY:1

M6 x 15  
QTY 8

M6 x 60  
QTY 8

M6 x 48  
QTY 4

M6 x 63  
QTY 5

M8 x 15  
QTY 8

M8 x 20  
QTY 6

M8  
QTY 6

M5  
X 1

M4  
X 1

M3  
X 1

X 1

Note: wrench is located in the caster bag



Assistance Required

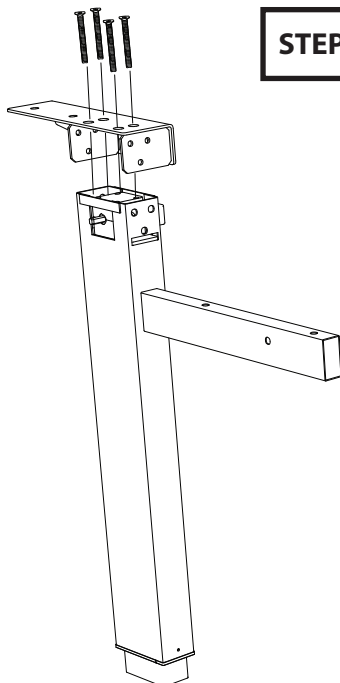
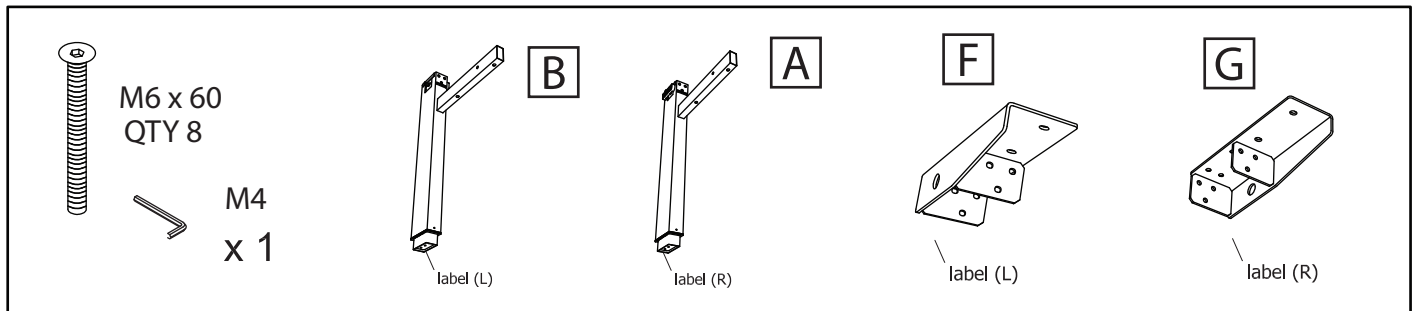


Screwdriver needed

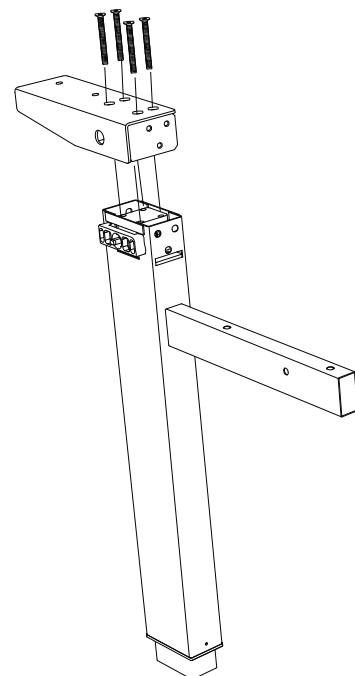
Gather parts A, B, F, G, M6 screws and the M3 allen wrench.

Attach the Left top bracket to the left leg frame – look for matching stickers on each part.

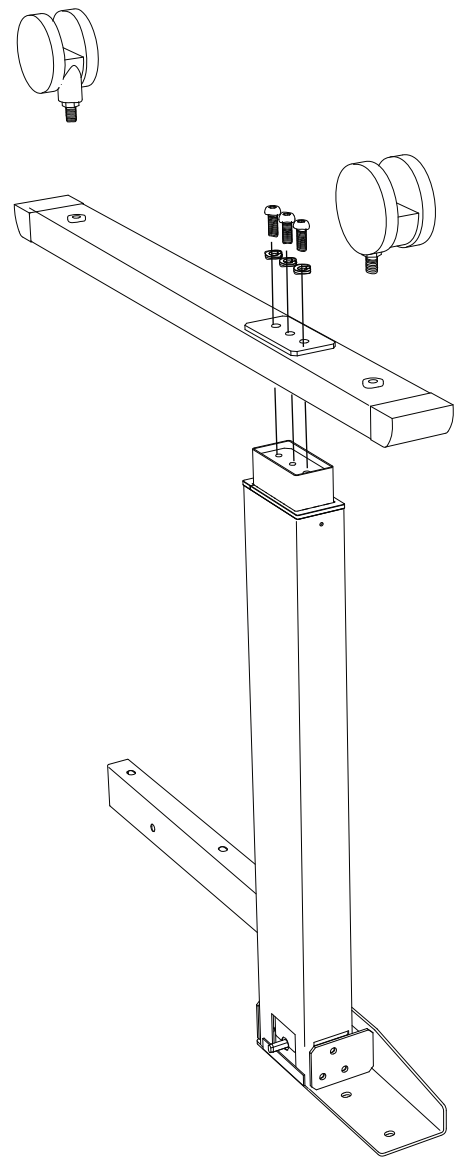
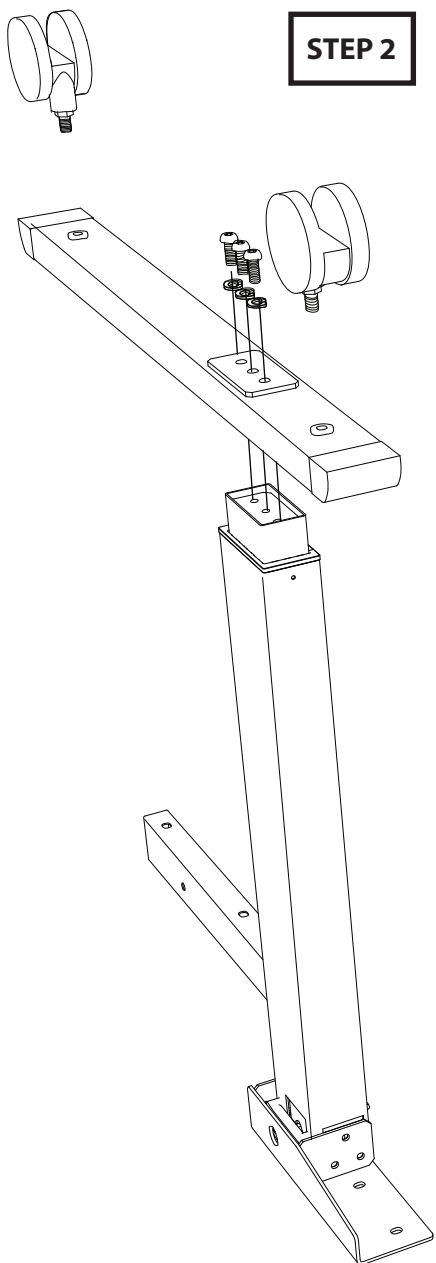
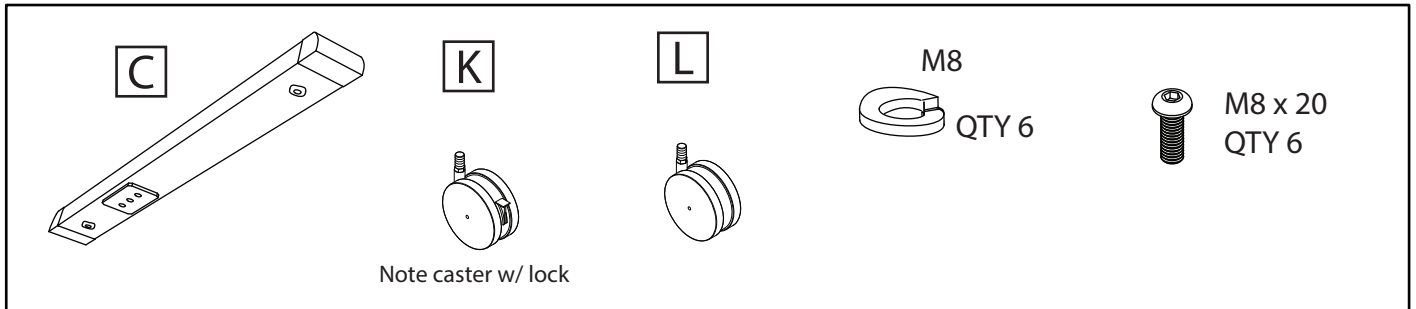
Attach the Right top bracket to the right leg frame – look for matching stickers on each part.



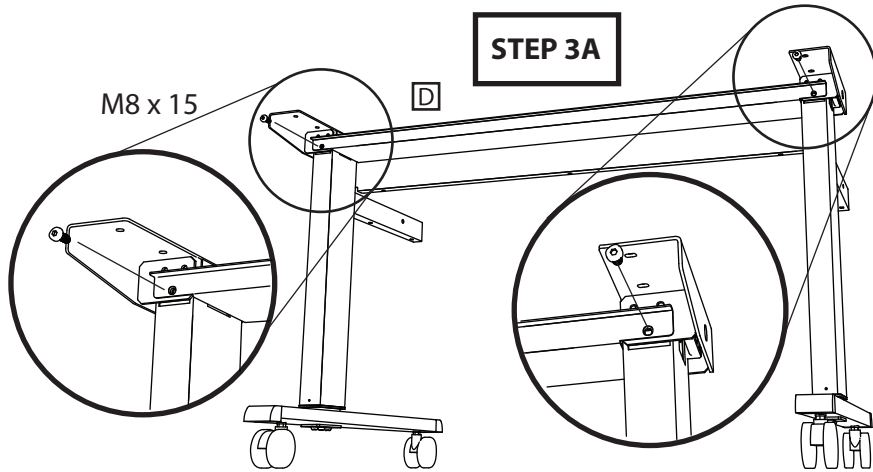
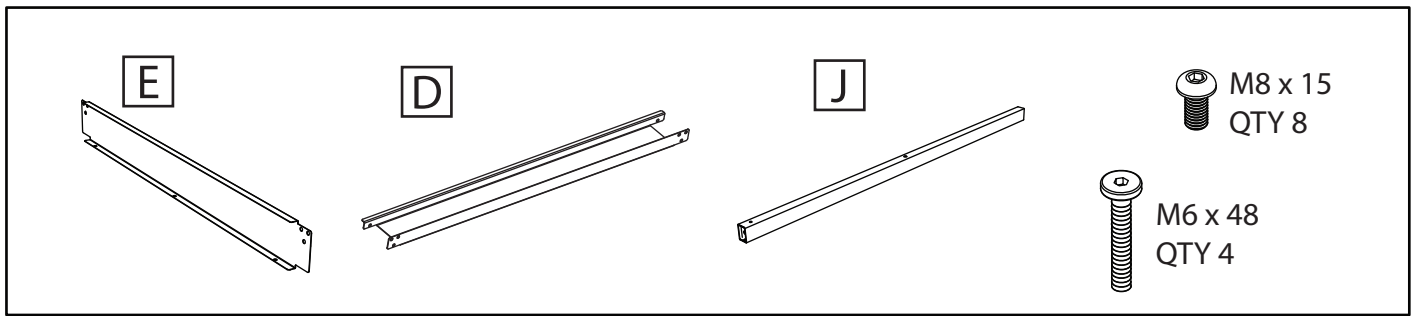
STEP 1



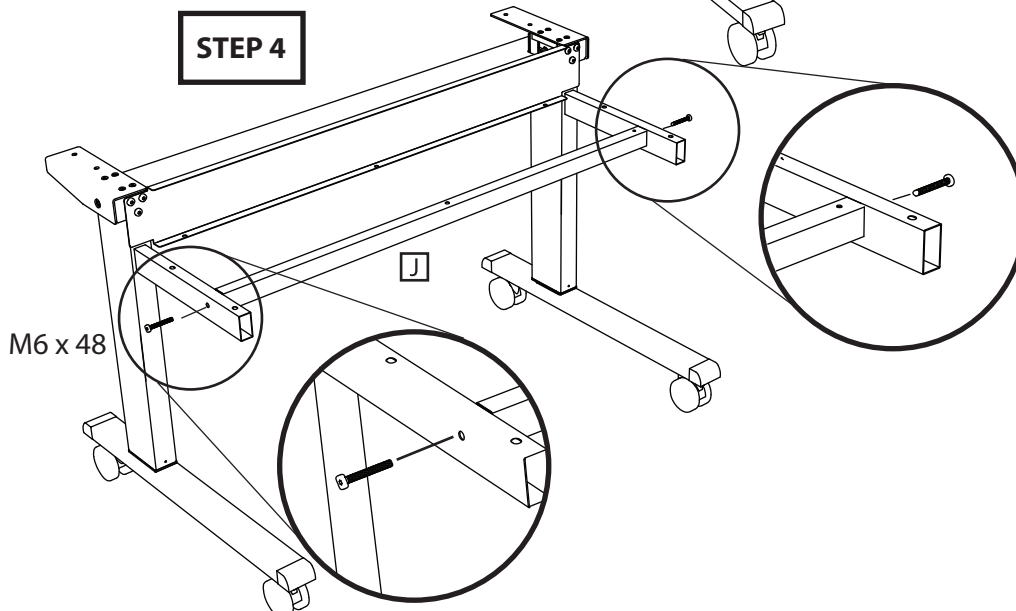
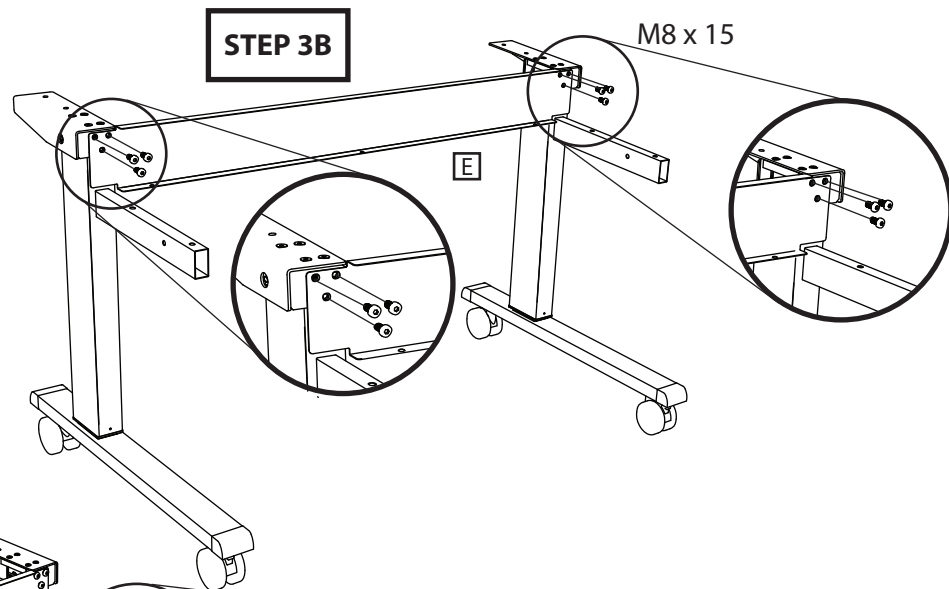
Gather parts C , K, L, M8 screws, M8 split washers and the M5 Allen wrench.  
Attach the feet and casters to the left and right frame. Locking brake to the front.



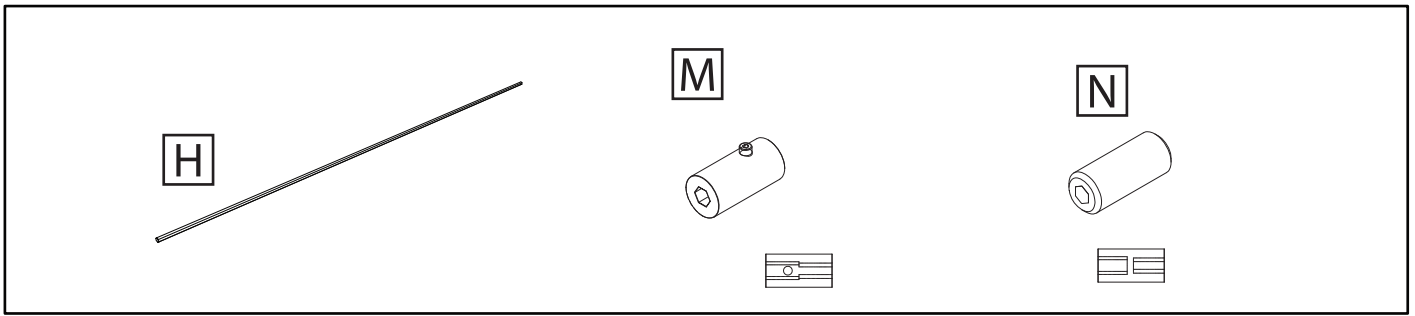
Gather parts E , D, M8 screws, M6 screws and the M4 and M5 Allen wrench.  
With assistance attach the cross frame parts.



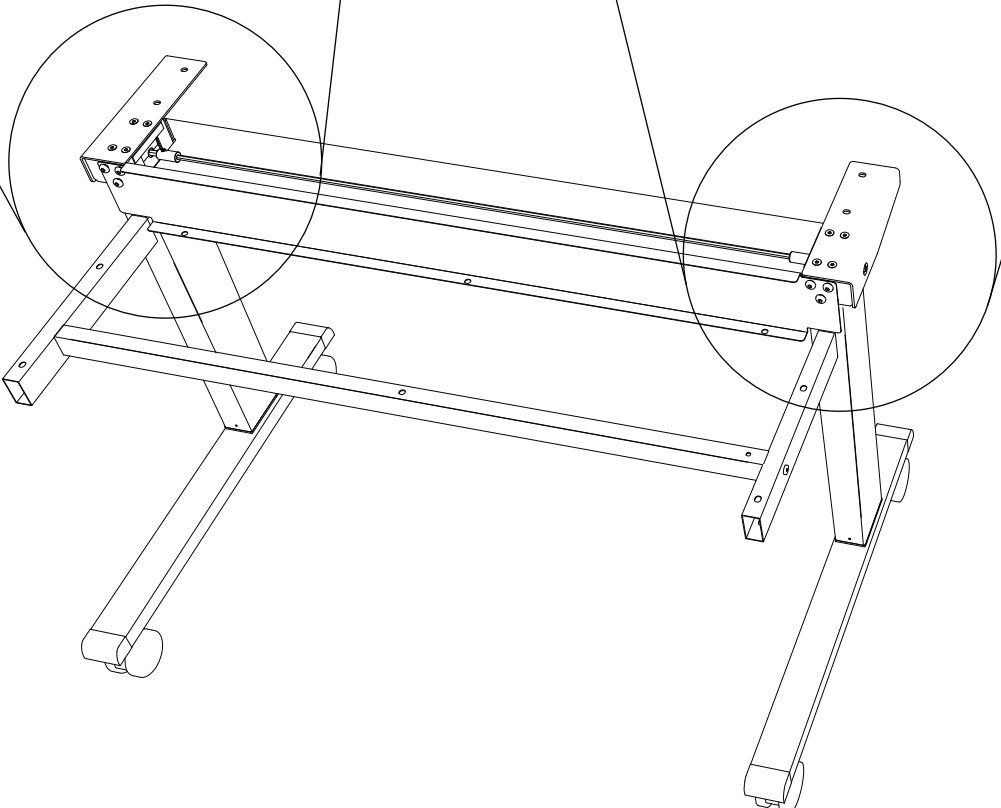
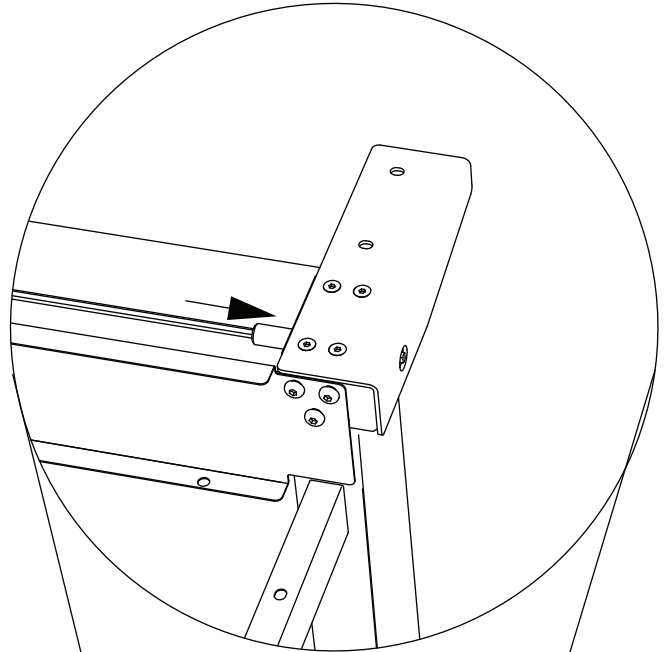
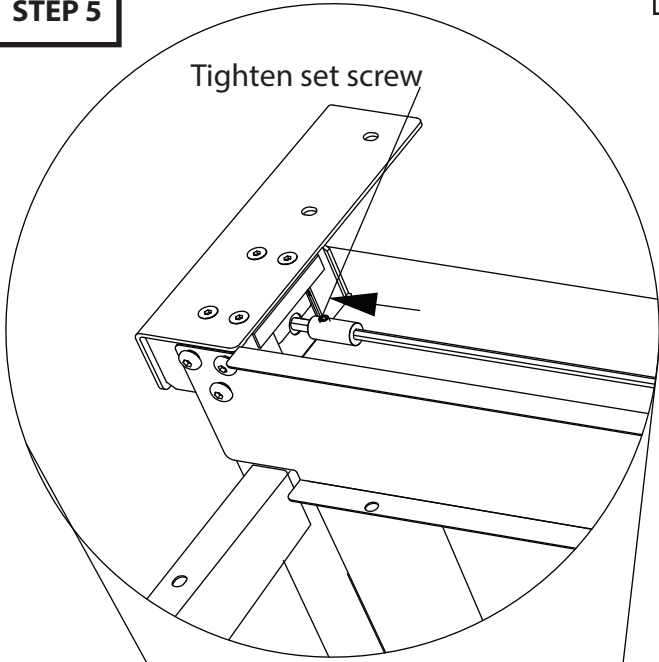
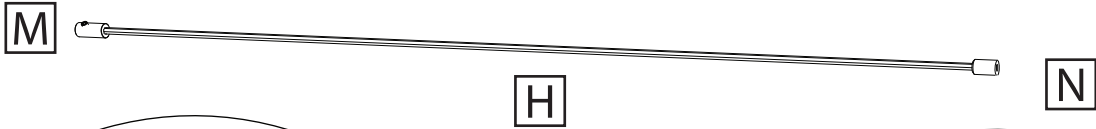
**NOTE:** Part E uses shared holes with part D. Hold D in place, while securing both E and D.



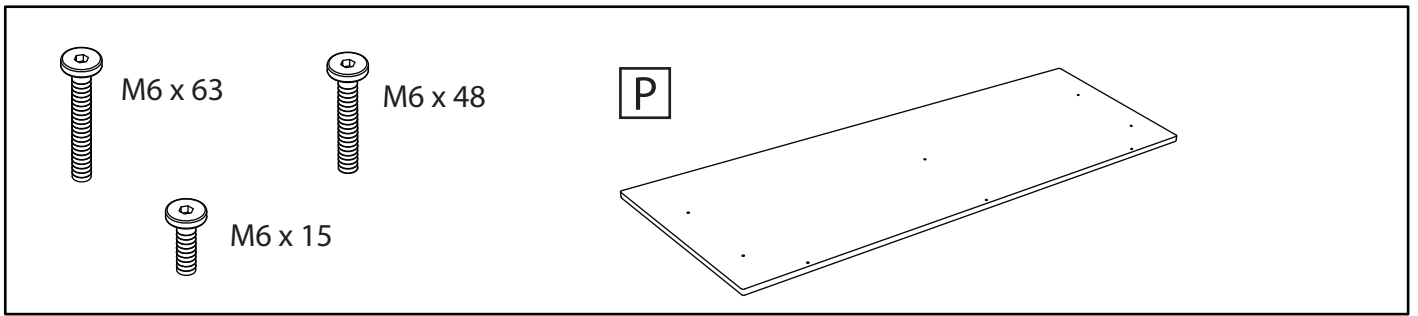
Gather parts H , M, N and the M3 Allen wrench.  
Place adapter parts (M & N) onto the cross-rod (H). Slide the crossbar  
into post on right side. Align part (M) to post on left side and  
slide part (M) over post and tighten set screw.



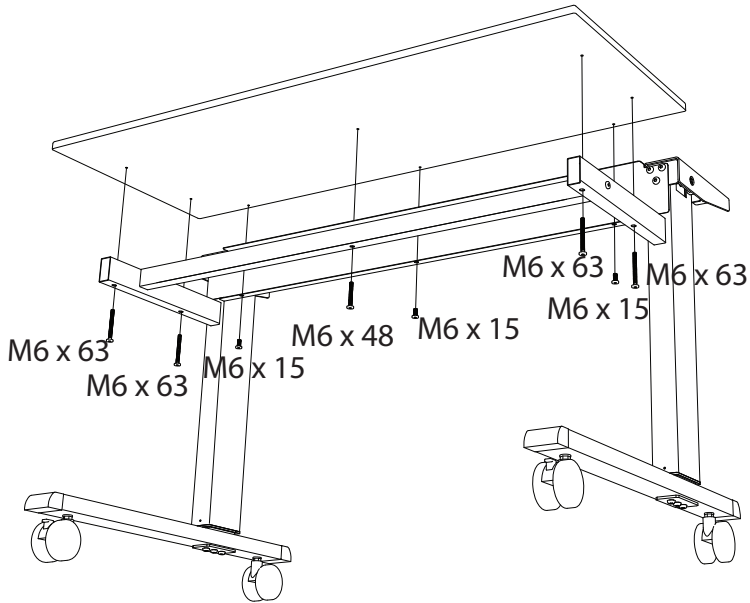
**STEP 5**



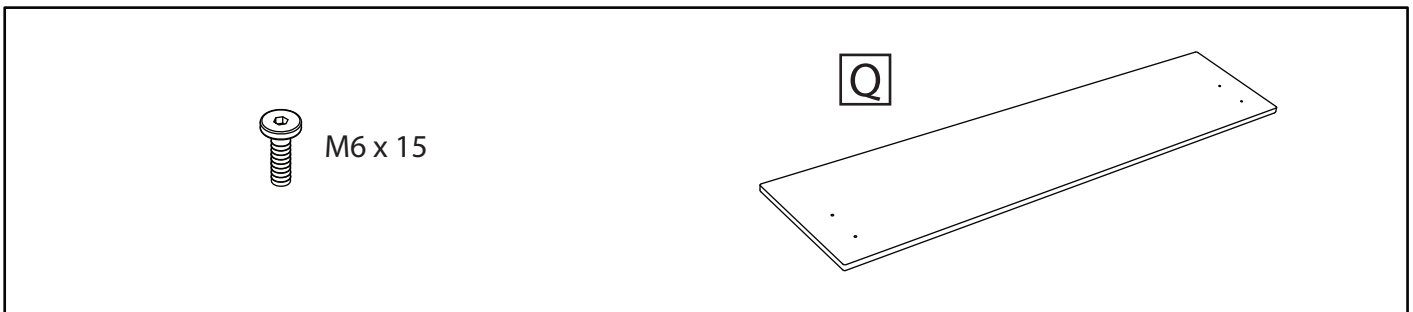
Gather part P, screws M6 and the M4 Allen wrench. Install the upper shelf



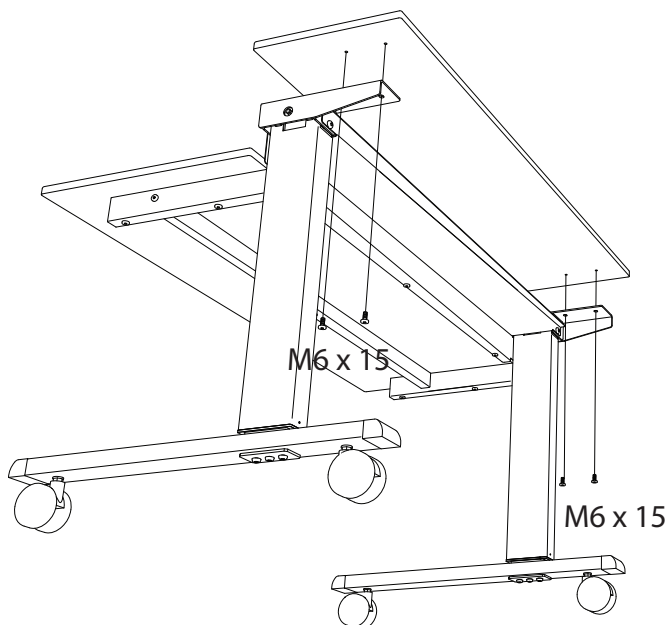
**STEP 6**



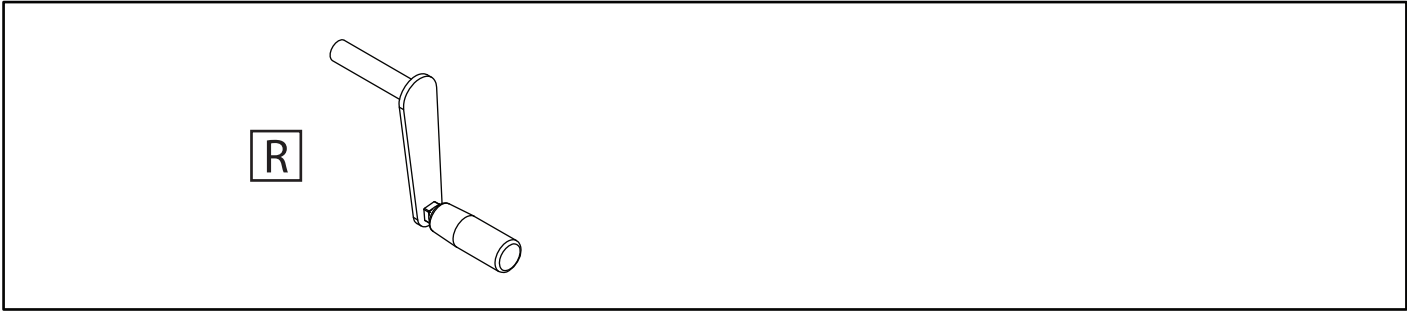
Gather part Q, screws M6 and the M4 Allen wrench. Install the top shelf



**STEP 7**



Gather part R. Install the crank handle, and you are complete.



**STEP 8**

