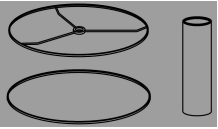


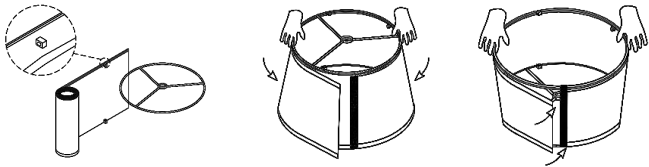
## STEPS TO ASSEMBLE THE LAMPSHADE

- 1** Take out the lampshades and round iron frames.

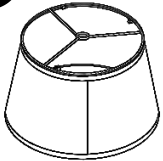


Align the frame with the edge of the lampshades and secure it in place using fasteners. Repeat the process for the second frame. Ensure that the frames are firmly attached and the lampshades are tightly stretched.

**2**



- 3** For an oblique barrel-shaped lampshade, align the lamp frame by placing its short edge on the corresponding short side of the lampshade and the long edge on the corresponding long side.

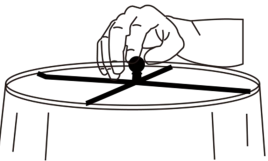


Install the harps onto the lamp base by positioning them over the sockets. Next, insert the bulb into the socket and rotate it clockwise until it is securely in place. (bulbs are not included).

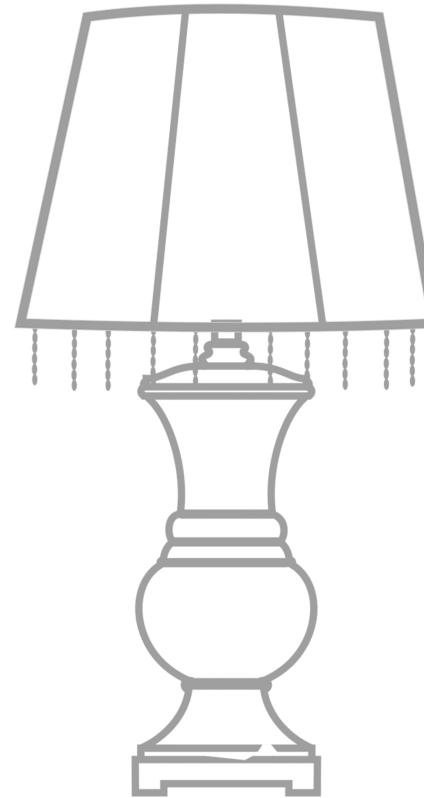
**4**



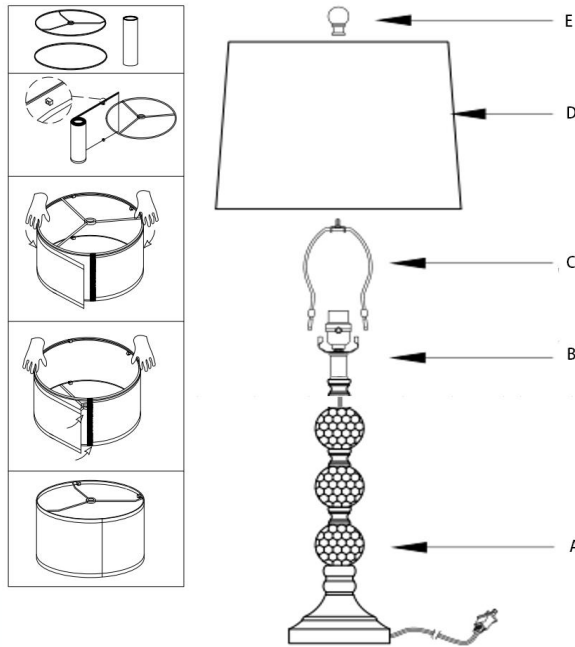
- 5** Once the lampshade is positioned correctly, screw the finial into place to hold it securely. (If the lamp shade is slanted, adjust the base of the finial to make it level).



## INSTRUCTION MANUAL



Applicable bulb  
type:A19,A60,T45,ST58...  
(Excluding bulb)



- 1.Unpack all parts from cartons carefully.
- 2.Carefully pull-out excess power cord from the lamp base while assembling to prevent the cord from becoming twisted.
- 3.Tighten the lamp socket(B)into the body(A) until tight.
- 4.Place the harp(C)onto the lamp socket(B).
- 5.Place the shade(D)onto the harp(C).
- 6.Tighten the finial(E)into the harp(C)until tight.

## WIRE CONNECTION DIAGRAM

Wires meeting safety standards are required to connect the electrical circuit

**CAUTION:** Risk of fire



Please read all instructions carefully. Before you proceed to install,make sure that the power supply is turned off and remains off until installation is completed.

## PARTS INCLUDED

Code	Part description	QTY
A	Body	1
B	Lamp socket	1
C	Harp	1
D	Shade	1
E	Finial	1

**Warning:** If any special control devices are used with this fixture, follow the instructions carefully to assure full compliance with N.E.C.requirements. If there are any questions, contact a qualified electric contractor.

**Warning:** California Residents Proposition 65  
This product contains lead, a chemical known to the state of California to cause cancer and birth defects or other reproductive harm. Do not place the product in your mouth. Wash your hands after handling this product.

**Caution:** It is highly recommended to get an electrician to install this light. Please make sure to turn the electricity off at the main circuit breaker before beginning installation. All glass is fragile.Use care when handling glass component(s)and/or lamp(s).