

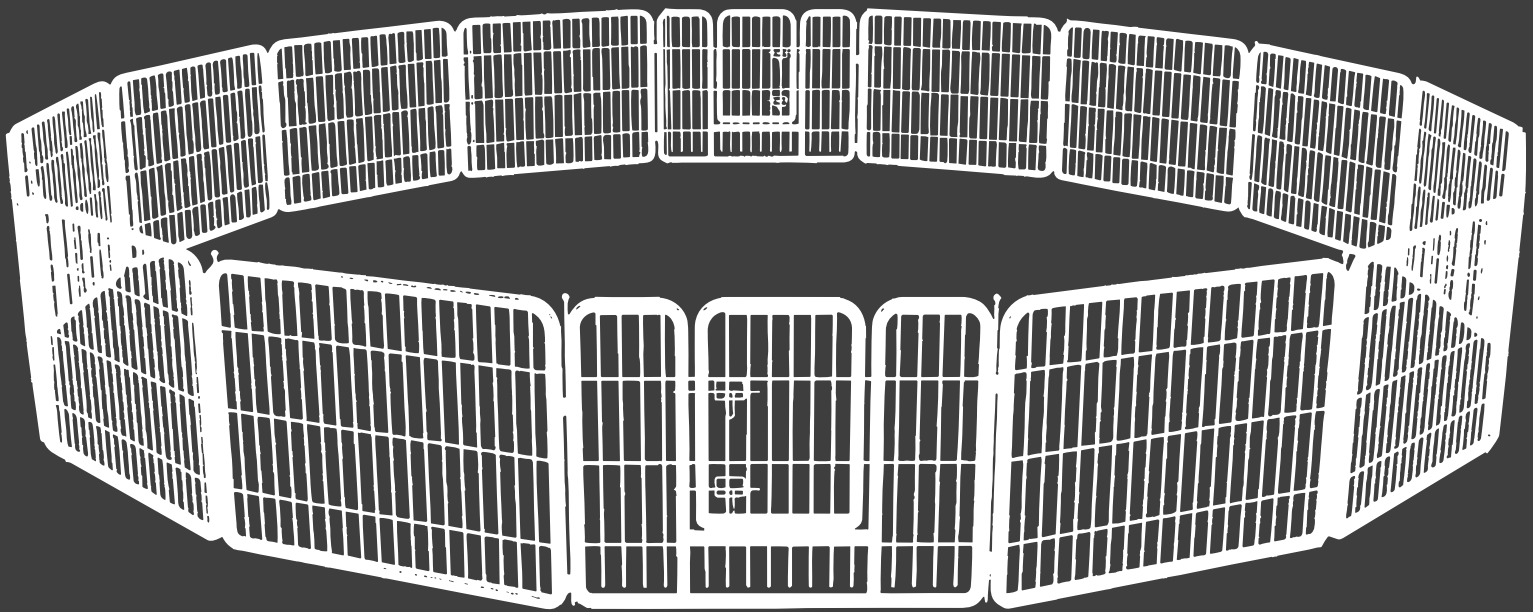
Dog Fence

Instruction Manual

DOGF-16D01-24S

DOGF-16D01-32S

DOGF-16D01-40S

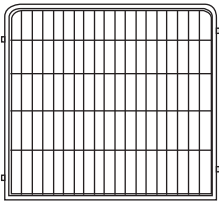
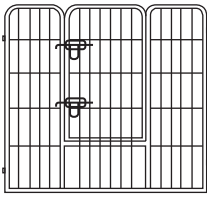
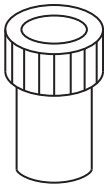



EST 9:00AM--17:00PM

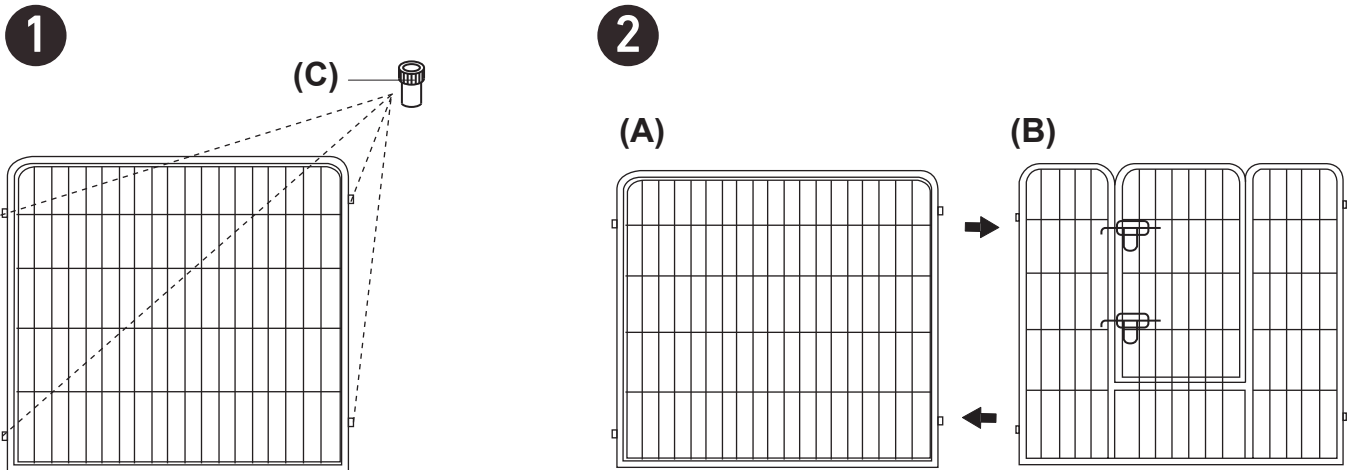
HJ-Customer-Service@outlook.com

(909)637-7665 | (909)637-7593

PACK LIST

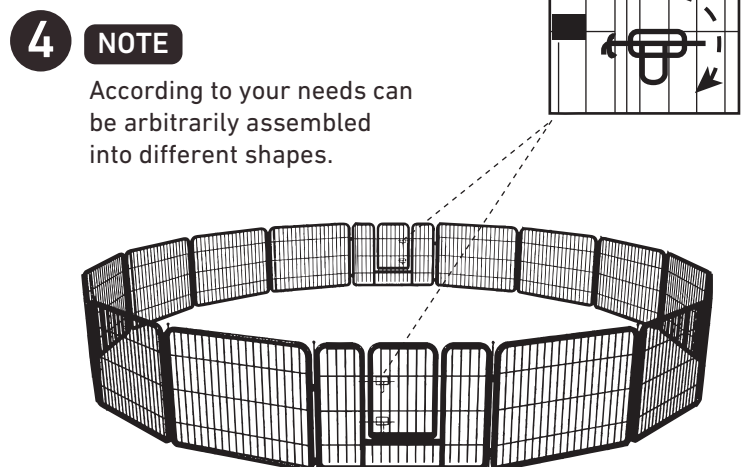
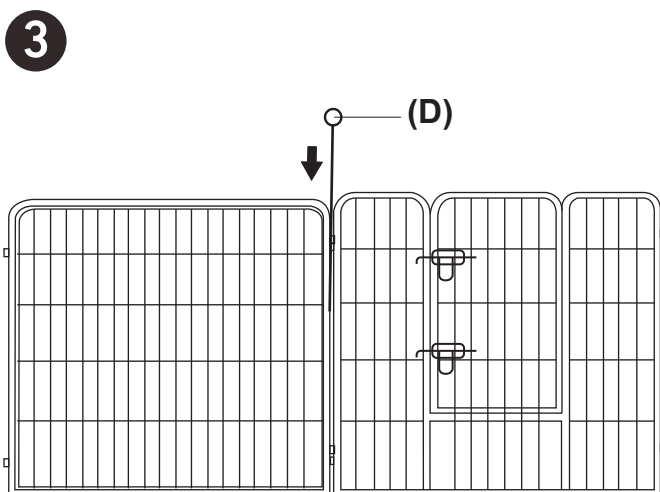
A  (A)*14 Side Fence	B  (B)*2 Front Fence	C  (C)*64 Rubber Plug	D  (D)*16 Metal Rod
---	---	---	--

Assembly Instruction



Step 1 Press the Rubber Plug **(C)** into the side holes of the Fence **(A)** and **(B)**.

Step 2 Put the two fences together.



Step 3 Use the Metal Rod **(D)** to attach the Fence **(A)** and **(B)**.

Step 4 Piece together to get a complete dog fence.