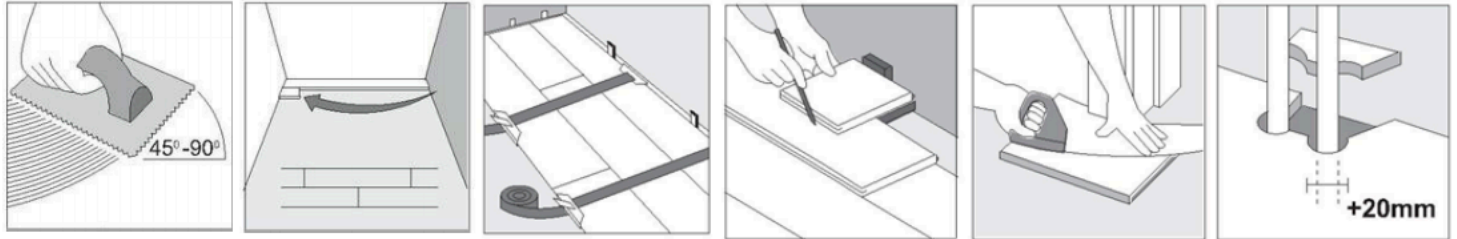


Manufacturer Hardwood Flooring Installation Guidelines



BEFORE INSTALLATION

Please carefully examine the flooring you have purchased before installation – examine color, surface, finish, quantity, etc. Contact the dealer immediately if the flooring is unacceptable. Compensation and service from the manufacturer will not be provided once the flooring has been permanently installed.

GLUE DOWN INSTALLATION

TOOLS REQUIRED

- Broom or Vacuum
- Moisture Meter
- Safety Gloves
- Measuring Tape
- Hand Saw
- Chalk
- Electric Miter Saw
- Floor Cleaner
- Hammer
- Pry Bar
- Straight Edge
- Wood Flooring Adhesive
- Adhesive Remover
- Rags
- Square Notch Trowel
- Mineral Spirits

INSTALLATION INSTRUCTIONS

1. Mark out a straight line parallel to the chosen wall, allowing a 10mm gap for expansion. It may be necessary to scribe the first row of boards to achieve the correct alignment.
2. Once the first row of boards is correctly aligned and glued into place, weigh them down while the glue sets. Any surplus glue that may seep out onto the surface of the wood must be removed immediately with a damp cloth. The glue should not be applied in the groove or the tongue of the flooring.
3. Continue to fit the boards from the left to the right of the room. Always stagger the end joints by a minimum of 150mm and a maximum of 300mm. Measure and trim the last board to fit, allowing for the 10mm expansion gap. Where possible, use cut-offs to start the next row.
4. Flooring straps can be used to pull board together and hold them into place whilst the glue dries.
5. The expansion gap of 10mm must be maintained during installation.
6. For the last row of boards, you can use the sandwich technique to measure the width of board required, ensuring that the row is no less than 10cm in width.
7. All pipes, pillars, frames, etc. must be cut around to provide suitable expansion gaps.

NAIL OR STAPLE DOWN INSTALLATION

TOOLS REQUIRED

- Broom or Vacuum
- Moisture Meter
- Safety Gloves
- Measuring Tape
- Hand Saw
- Chalk
- Electric Miter Saw
- Floor Cleaner
- Hammer
- Pry Bar
- Drill
- Air Hose
- Tapping Block
- In-line Air Regulator
- Compressor
- Pneumatic Nailer / Stapler

INSTALLATION INSTRUCTIONS

1. Select an outside wall as the starter wall, which will likely be straight and square with the room.
2. Mark a straight line parallel to the chosen wall, allowing a 10mm gap for expansion. It may be necessary to scribe the first row of boards to achieve correct alignment.
3. Along the straight line, install the first row of starter boards. The tongue must face away from the chosen wall. Drill pilot holes through the face of the plank (we suggest every 6") in the dark grain. Approximately 1" from the back edge of the board and secure planks with 1" finishing nails.
4. For the first few rows, pre-drill holes, then blind nail at a 45 degree angle through the tongue 1" to 2" from the end joints and every 6" in between along the length of the starter boards.
5. Continue to install the flooring. Always stagger the end joints by a minimum of 150mm and a maximum of 300mm. Measure and trim the last board to fit, allowing for the 10mm expansion gap. Where possible, use cut-offs to start the next row. Nail or staple 1" to 2" from the ends and 3" to 4" thereafter.
6. In case there are gaps between adjacent boards, use a tapping block to help engage the boards together until the tongue-and-groove is flush and tight.
7. For the last row of boards, allow for the expansion along the end wall if it is necessary to cut the width.
8. Drill pilot holes in the face every 6" (try to drill holes in darker portion of the wood) and install with 1" finishing nails. Countersink nails and fill with appropriate colored wood filler. Remove excess filler from the surface with a clean rag and proper cleaner.