

**LONGHOUSE**  
**12 Ft x 10 Ft**  
**MODEL LH1210**



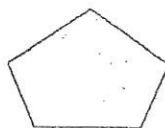
# ACCESSORIES, HARDWARE, AND FASTENERS



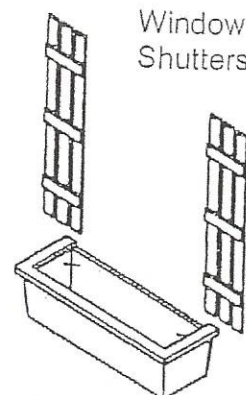
Door Handle



"Cedarshed" plaque

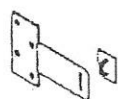


Blank plaque



Window Shutters

Planter box



Hasp



Hinges

## Fasteners



Barrel bolt



1 1/8" nails



1 3/4" nails



2" nails



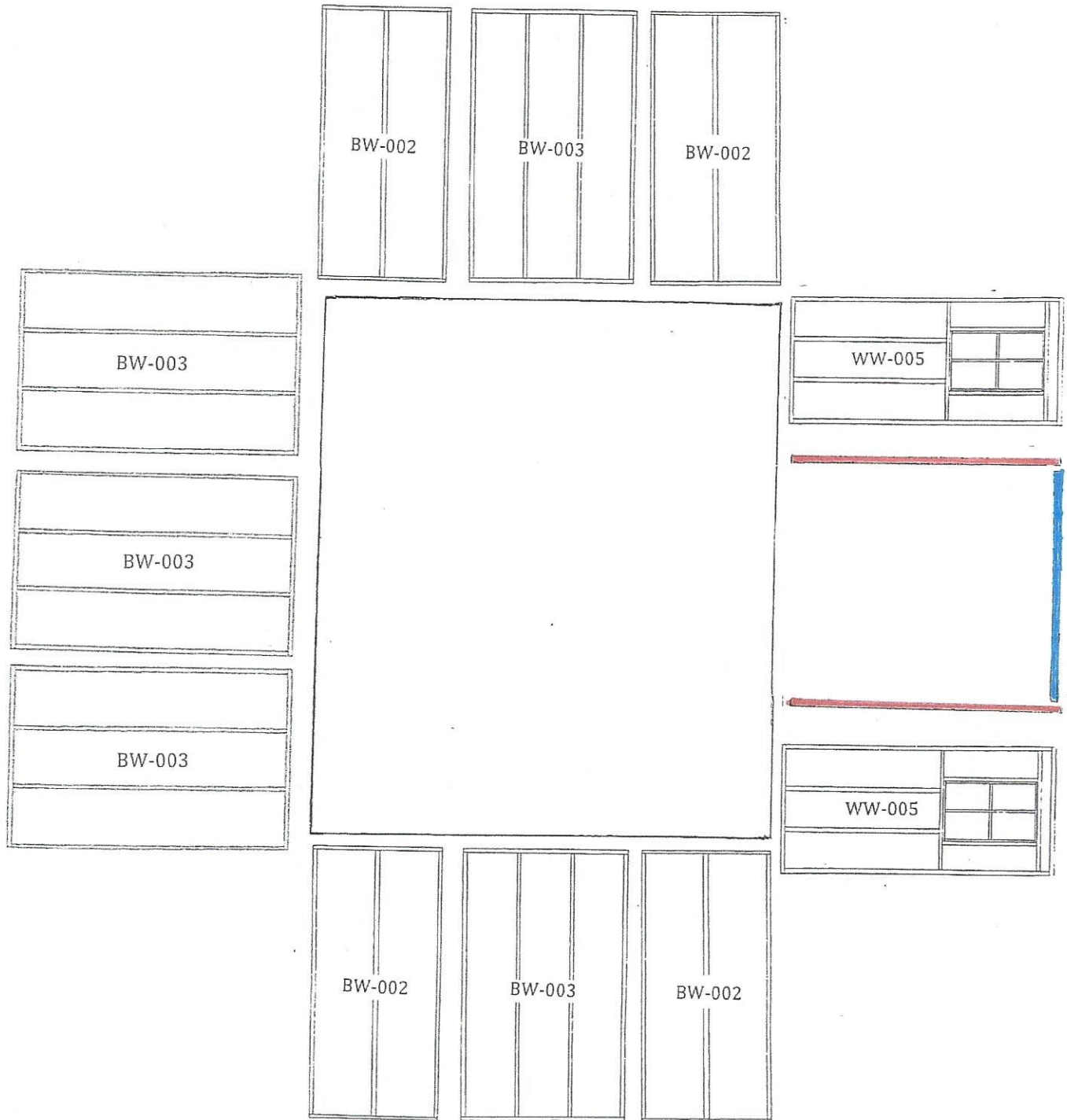
2" screws



3" screws

## LH1210

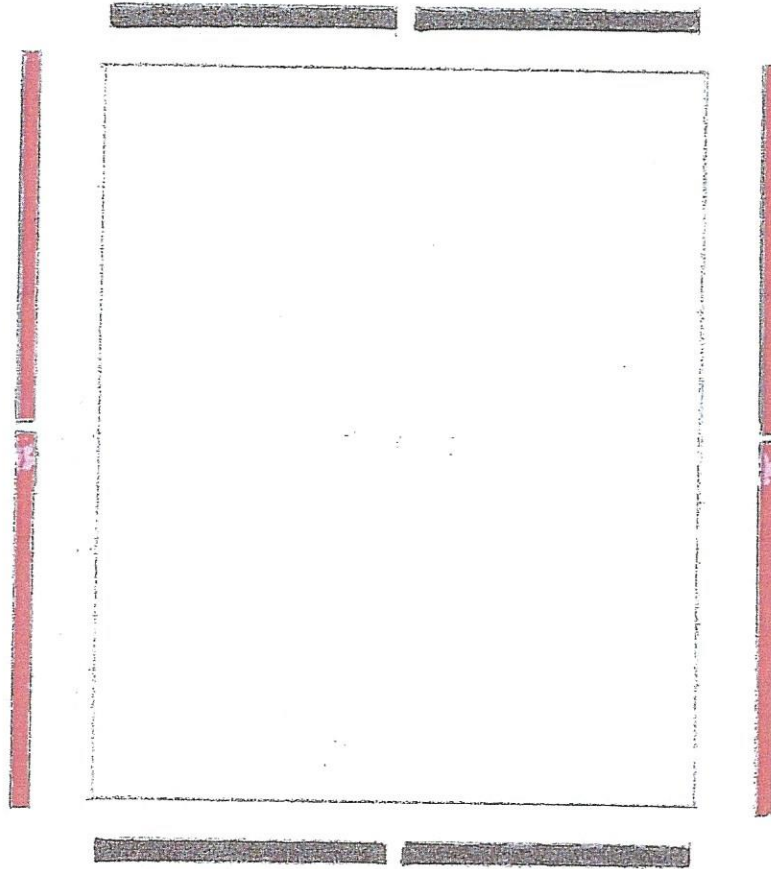
PART #	DESCRIPTION	DIMENSIONS (where app.)	# OF PCS
<b>ACCESSORIES</b>			
P-H-PLAQSL	square CS plaque	square CS plaque	1
P-H-PLAQNL	peak plaque	peak plaque	2
P-FW-001	window box	window box	2
P-SH-001	shutters	shutters	4
<b>FASTENERS</b>			
P-H-NL1.125	nails	1 1/8" nails	25
P-H-NL1.75	nails	1 3/4" nails	300
P-H-NL2	nails	2" nails	50
P-H-SC2	2" screws	2" Screws	175
P-H-SC3	3" screw	3 " Screws	400
<b>DOOR AND HARDWARE</b>			
C-DR-001	double doors (incl. Hinges)	double doors	2
P-1371C	door stop	1 x 3 x 71 1/4	1
P-1262G	door stop	1 x 2 x 62 1/2	1
P1271I	door stop	1 x 2 x 71 5/8	2
P-H-BBLT4	barrel bolt	4 " barrel bolt	2
P-H-DHAND	door handle	door handle	2
P-H-HASP	hasp	hasp	1
Instruction manual, questionnaire and driver bit			



**LONGHOUSE 12 x 10**

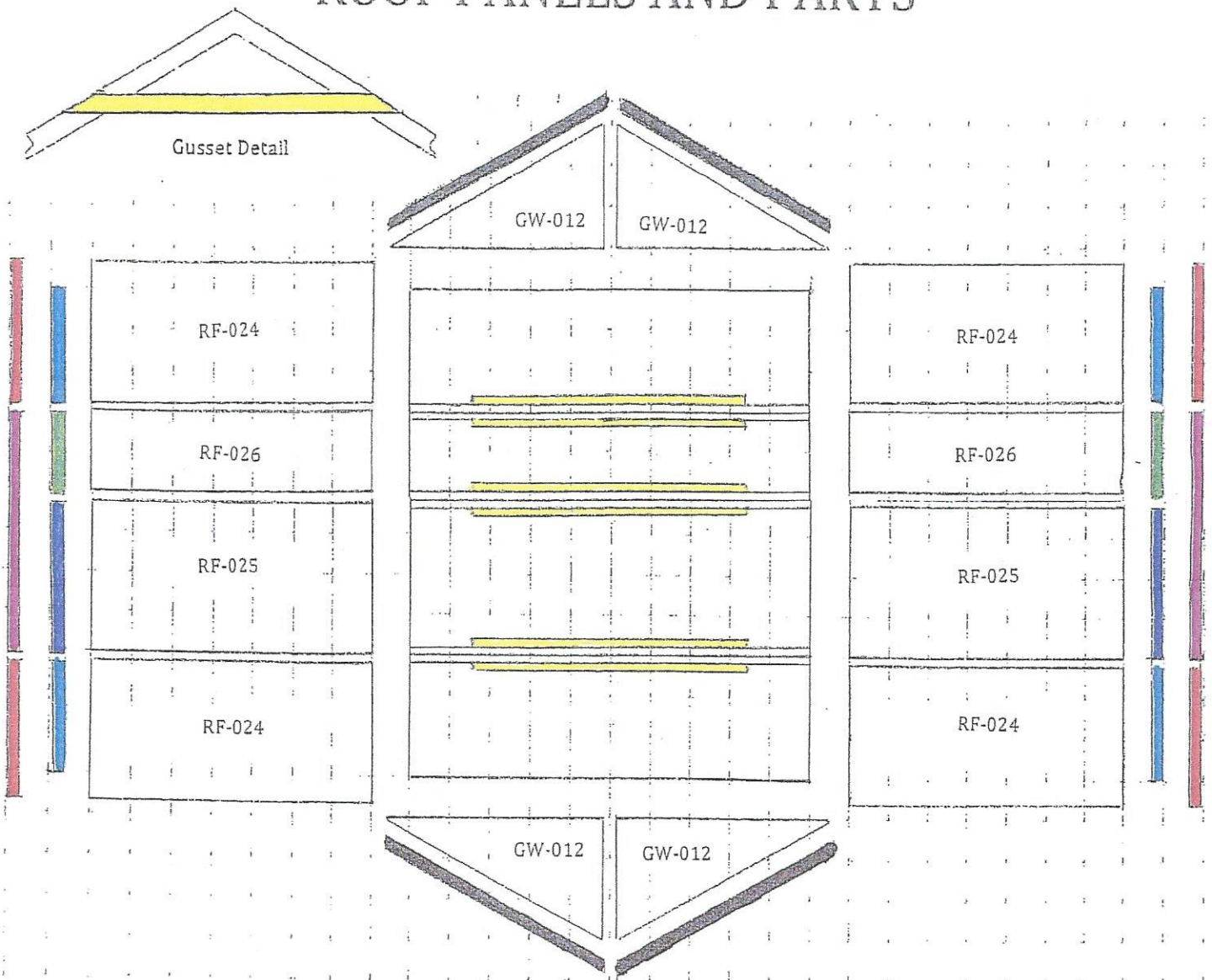
PART #	DESCRIPTION	DIMENSIONS (where app.)	# OF PCS	CODE
<b>WALL PARTS</b>				
P-2334G	header	2 x 3 x 34 1/2	4	not shown
P-2346G	header	2 x 3 x 46 1/2	5	not shown
C-BW-002	wall panel	34 1/2" wall panel	4	BW-002
C-BW-003	wall panel	46 1/2" wall panel	5	BW-003
C-DF-020	door frame (vertical)	door frame	2	
C-DF-021	door frame (horizontal)	door frame	1	
C-WW-005	window wall	window wall with fixed window	2	WW-005

# TOP PLATE PLACEMENT



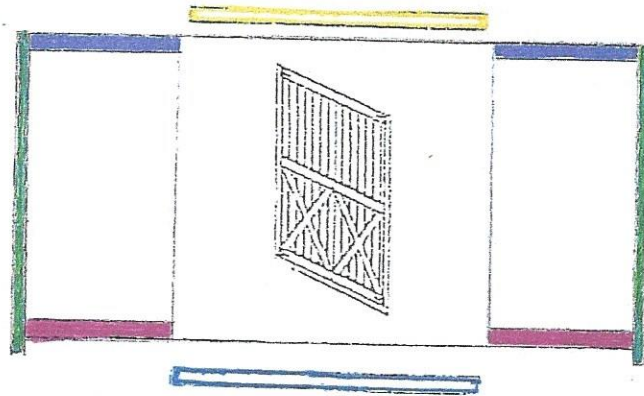
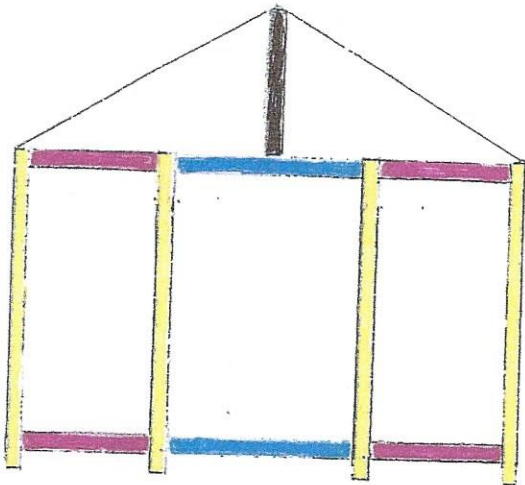
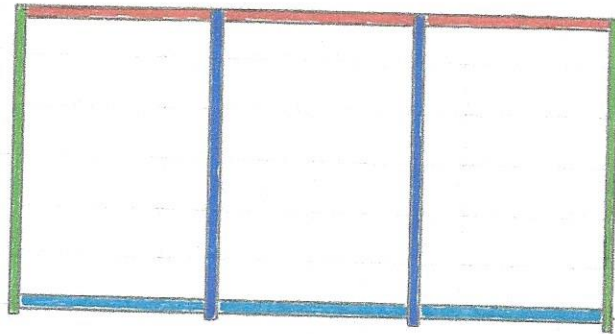
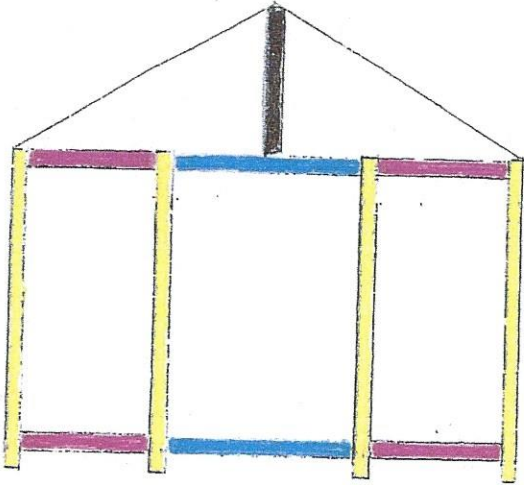
PART #	DESCRIPTION	DIMENSIONS (where app.)	# OF PCS	CODE
<b>TOP PLATES</b>				
P-2355C	top plates	2 x 3 x 55 1/4	4	
P-2372C	top plates	2 x 3 x 72 1/4	4	

# ROOF PANELS AND PARTS



PART #	DESCRIPTION	DIMENSIONS (where app.)	# OF PCS	CODE
<b>ROOF PARTS (WOOD SHINGLES)</b>				
P-2371KYb	gusset	2 x 3 x 71 3/4	6	
C-GW-012	gable wall	25 3/4 x 67 1/8	4	GW-012
C-RF-024	roof panel	42 3/4 x 67 1/8	4	RF-024
C-RF-025	roof panel	46 1/2 x 67 1/8	2	RF-025
C-RF-026	roof panel	24 x 67 1/8	2	RF-026
P-B-G424	soffits	1/2 x 4 x 24	2	
P-B-G437	soffits	1/2 x 4 x 37	4	
P-B-G446G	soffits	1/2 x 4 x 46 1/2	2	
P-1442	fascia	1 x 4 x 42	4	
P-1470G	fascia	1 x 4 x 70 1/2	2	
P-1471YA	gable fascia	1 x 4 x 71	4	
P-H-RFLT12	roofing felt	1 ft x 5 ft	5 sq ft	not shown
P-H-RCAP24	ridge caps	24"	18	not shown
P-H-MFLASS	roof flashing	3" x 12"	36	not shown

LH1210



PART #	DESCRIPTION	DIMENSIONS (where app.)	# OF PCS	CODE
<b>TRIM PARTS</b>				
P-1226	gable trim	1 x 2 x 26	2	
P-1279C	trim	1 x 2 x 79 1/4	2	
P-1280G	trim	1 x 2 x 80 1/2	8	
P-13C79C	trim	1 x 3 1/4 x 79 1/4	4	
P-B-G433	skirting	1/2 x 4 x 33	2	
P-B-G633	skirting	1/2 x 6 x 33	10	
P-B-G645	skirting	1/2 x 6 x 45	7	
P-B-G445	skirting	1/2 x 4 x 45	3	
P-1472	door skirting	1 x 4F x 72	1	
P-1372	top door trim	1 x 3 x 72	1	