

## TECHNICAL SPECIFICATIONS

Smart Ceiling Fan Light

Input: AC120V~60Hz

Power: 53W(Fan:35W;Light:18)

Size:  $\Phi$  46 inch

# Ceiling Fan with Light



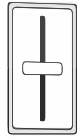
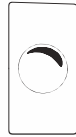
MADE IN CHINA



**WARNING**



ON/OFF switch



Dimmable switch

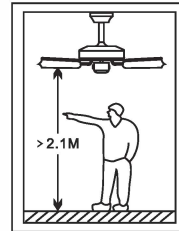
Turn power off before installation, inspection or removal.

Do not touch the light when it is on or hot.

In case of any problem with the fan light, turn power off, neither attempt to repair, unless you're a qualified technician.

Do not expose to water or rain.

Ensure that after the fan is installed, its lowest point is no less than 2.1 meters from the ground.



## PACKING LIST



Hanger Bracket x1



Canopy x 1



Ceiling Light Kit x 1



Fan Blade Arm x 5



Coupling Cover x 1



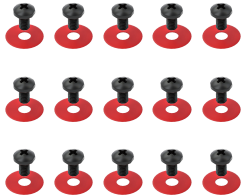
Fan Motor x 1



Fan Blade x 5



Downrod Assembly x 1



Screws with Washer of Fan Blade X 15



Screws of Fan Blade Arm X 10

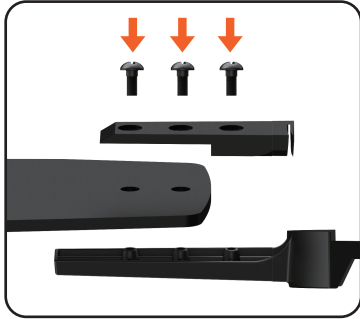


Screws with Washer of Hanger Bracket (choose one of two ways)



Terminal X 3

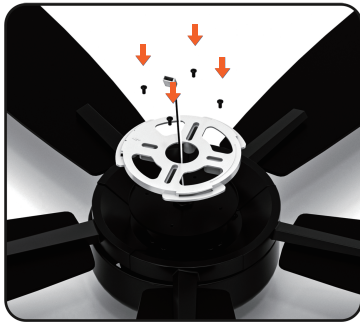
## INSTALLATION GUIDE



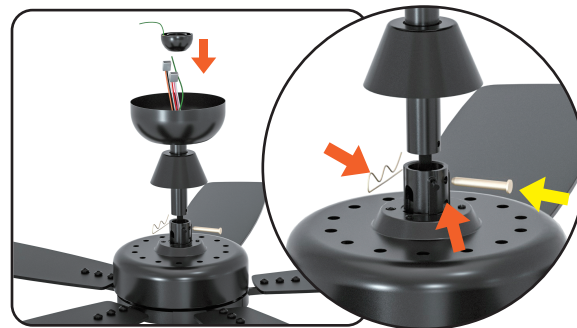
**Step 1.** Assemble the fan blades to the blade arms.



**Step 2.** Fix the fan blades to the fan motor.



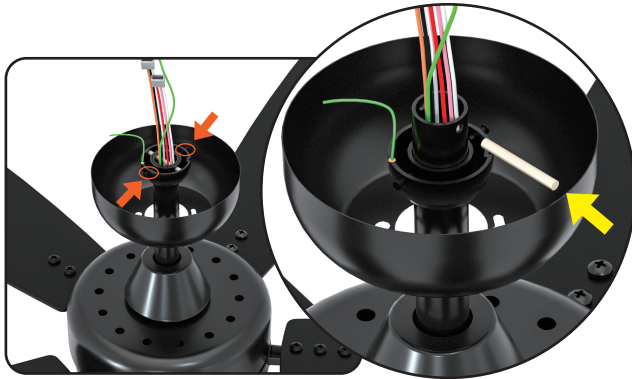
**Step 3.** Install the ceiling light baseplate.



**Step 4.** Install the downrod assembly-  
the canopy and the coupling cover in turn.



**WARNING**  
Be sure the groove in  
the downrod is properly  
aligned with the tab on  
the hanger bracket.



**WARNING**  
Make sure the black  
wire of the controller  
is hidden inside.

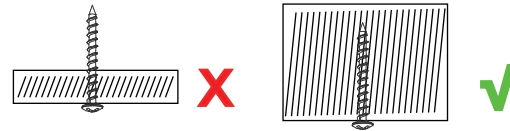


Step 5. Fix two screws.

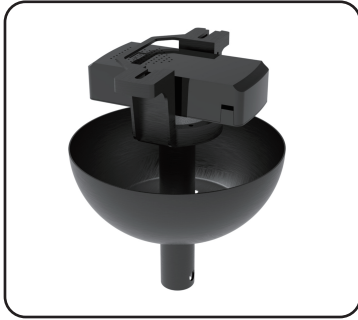
Step 6. Secure hanger bracket.



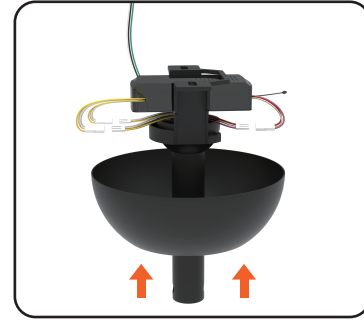
Step 7. Hang the assembled fan on the hanger bracket.



1. Please be sure that the thickness of the ceiling is more than the length of the screws.
2. The whole fan light weighs 6.5KG, please be sure that your ceiling can shoulder this weight freely.



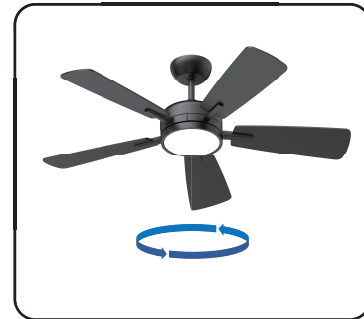
**Step 8.** Insert the controller into the gap of the mounting bracket.



**Step 9.** Interconnect the wires and secure the canopy.



**Step 10.** Lock the safety rope and connect the wires of the light. (NOTE: The safety rope needs to be locked to the inner ring of the fixture mounting disk)



**Step 11.** Rotate the ceiling light clockwise and finish installation.