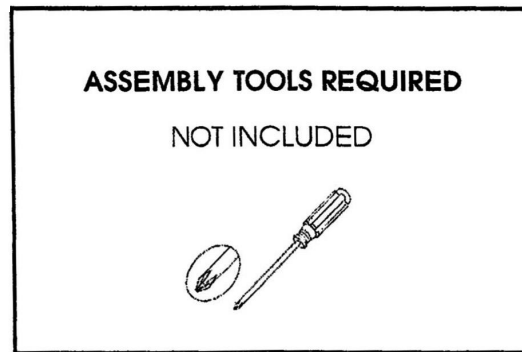


Ladder Back Chair Assembly Instructions



Before Assembly:

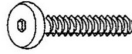
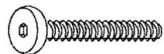
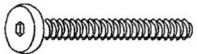




- Place all wooden parts on a clean and smooth surface, such as a rug or carpet, to avoid the parts from being scratched.
- Remove all wrapping material.
- Do NOT tighten all screws and bolts until completely assembled
- Keep all hardware parts out of reach of children.



When unpacking, be careful not to discard any parts with the packaging. Before continuing, please make sure you have all of the parts.

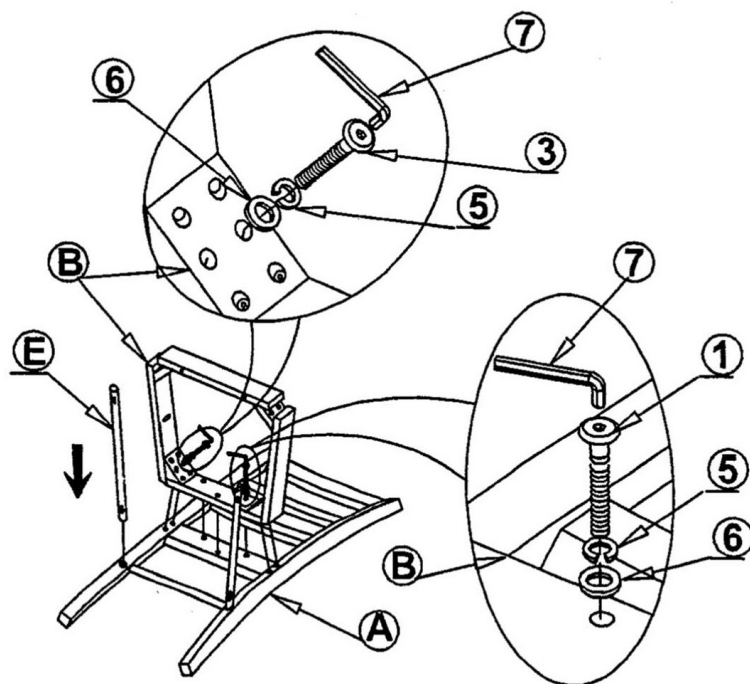
NO	Description	Qty	Sketch	NO	Description	Qty	Sketch
A	Chair back	1		B	Seat Frame	1	
C	Chair Seat	1		D	Front Leg (L-R)	2	
E	Side Stretcher	2					

Hardware List

NO	Description	Qty	Sketch	NO	Description	Qty	Sketch
1	Short bolt (M6x40mm)	3		2	Medium bolt (M6x60mm)	4	
3	Long bolt (M6x80mm)	4		4	Wood Screw (M4x35mm)	8	
5	Lock Washer (Ø6.5x13mm)	11		6	Flat Washer (Ø6.5X19mm)	11	
7	Allen Key (4mm)	1					

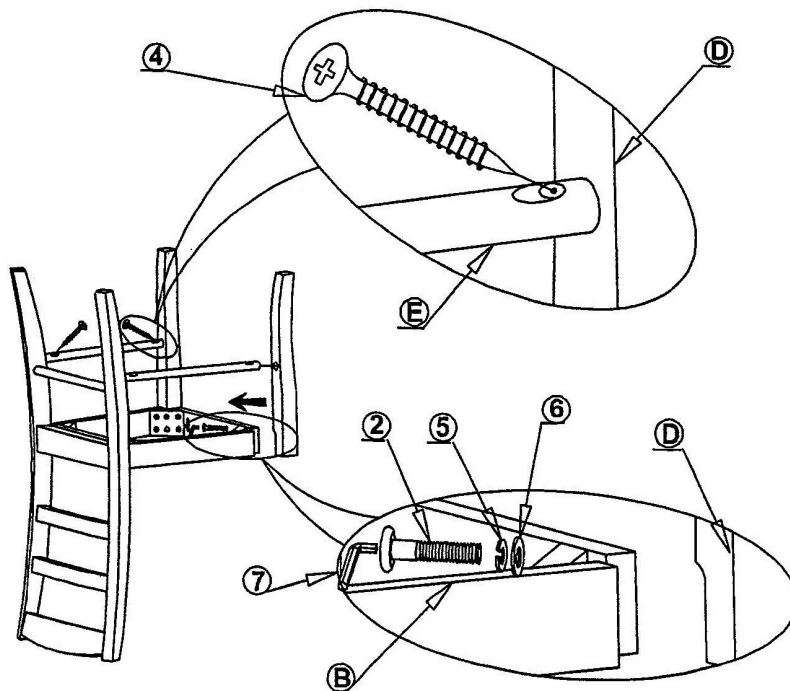
Step 1: Attach the seat frame (B) to the back (A) by using bolts (3), (1) and washers (5) and (6). Tighten with allen key (7) as shown below.

Note: **DO NOT** tighten any of the bolts until the chair is assembled. Put on a flat, level surface to make sure chair is level and then tighten the bolts.



Step 2: Attach front legs (D) to the seat frame (B) with bolts (2), washers (5) and (6). Tighten with allen key (7).

Place side stretchers (E) between front and back legs. Use the screwdriver to tighten the screws (4) as shown below.



Step 3: Attach seat (from step 2) by using screws (4), tighten with screw driver.

