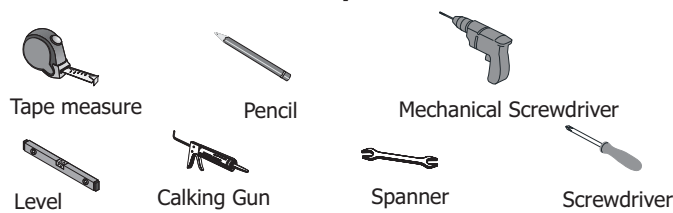
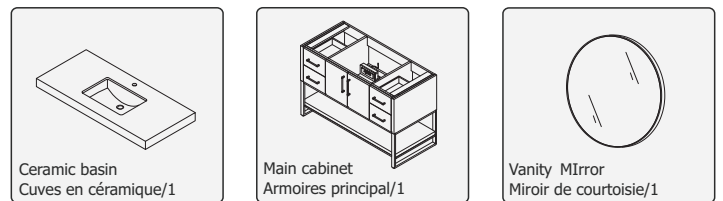


**\*INSTALLING VANITY WITH TWO PEOPLE IS HIGHLY RECOMMENDED\***  
**\*L'INSTALLATION DE LA VANITÉ AVEC DEUX PERSONNES EST FORTEMENT RECOMMANDÉE\***

**Recommended Tools/Outils recommandés**

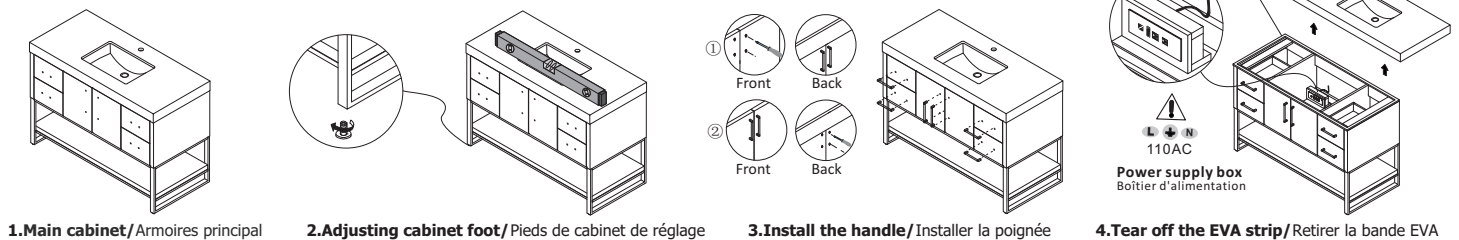


**Main Body Parts/La partie principale du corps**



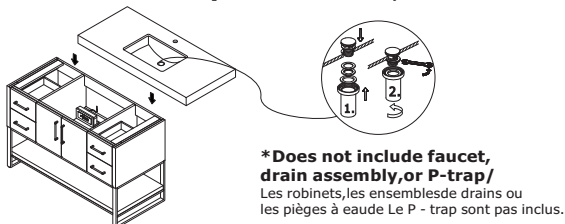
**STEP #1 Assembly instructions/Instructions de montage**

**Mounting cabinet/Installation du cabinet**

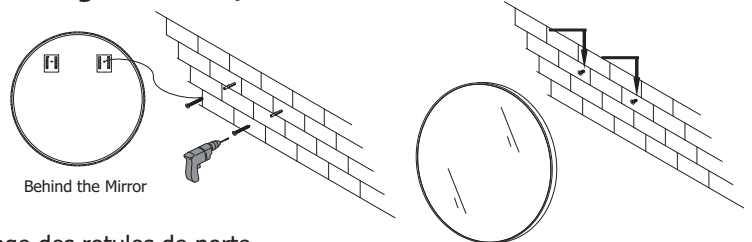


1. Main cabinet/Armoires principal 2. Adjusting cabinet foot/Pieds de cabinet de réglage 3. Install the handle/Installer la poignée 4. Tear off the EVA strip/Retirer la bande EVA

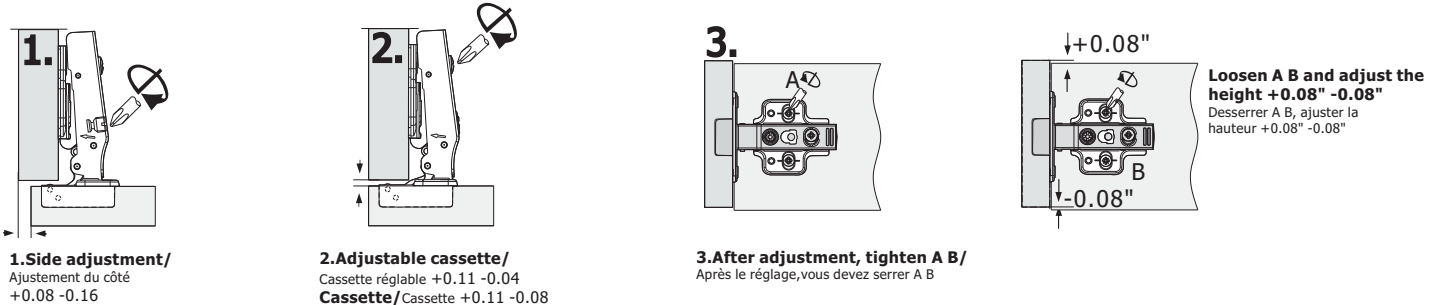
**STEP #2 Paste the countertop/Coller le comptoir**



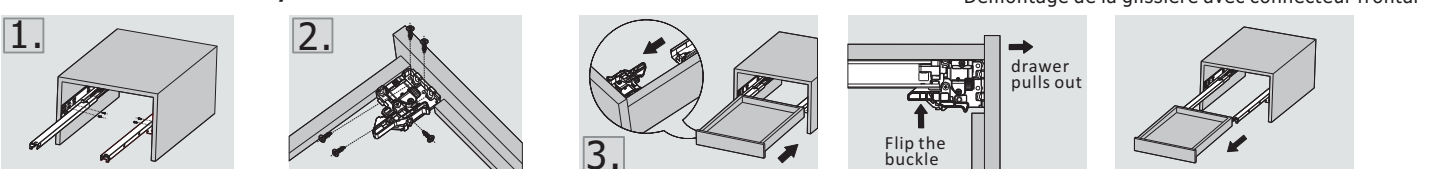
**STEP #3 Hang the mirror/Accrocher le miroir**



**Door hinge installation and removal/Installation et démontage des rotules de porte**



**Installation Instruction/Instructions d'installation**



•Please check your product packaging to make sure the included accessories etc.  
Veuillez vérifier l'emballage de votre produit pour vous assurer que les accessoires inclus

Flip the buckle of the front connector, then pull the drawer out to complete the disassembly  
Retournez la boucle du connecteur avant, puis tirezsortir le tiroir pour terminer le démontage

