

Owner's Manual and Instructions

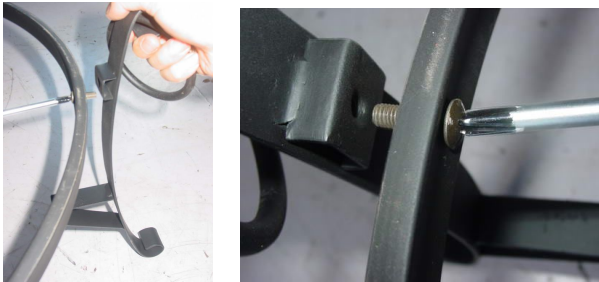
STEEL CAULDRON FIRE PIT

1. Carefully unpack all parts . Inspect for missing parts or damage.



Fire Bowl	1
Stand Legs	4
Rings	2
Spark Screen	1
Poker	1
Bolts M6	8
Bolts M8	3

1. Align holes of **Big Ring** with holes of stand legs , insert **Bolts M6** through holes of **Big Ring** and legs . Securely fasten bolts with screwdriver .



2. According to the same method above , assemble all stand legs but bolts cannot be twisted too tight .



3. Align holes of **Small Ring** with holes of stand legs , insert **Bolts M6** through holes of **Small Ring** and legs . Securely fasten bolts with screwdriver .



4. In turn , make all rings up and down assemble by bolts tightened with screwdriver .



5. Assemble the **Bolts M8** with the mouth wall of fire bowl tightly , place fire bowl on the holder .



6. Place screen on fire bowl . Enjoy !!



Warning :

For outdoor use only. If using on wood deck, set the firepit on top of a fireproof base/pad. Use in well ventilated area away from flammable liquids and materials. Do not leave firepit unattended. Do not touch while in use and keep children and pets a safe distance from the firepit.



WARNING



This product can expose you to carbon Monoxide, which is known to the State of California to cause cancer. For more information go to www.P65Warnings.ca.gov