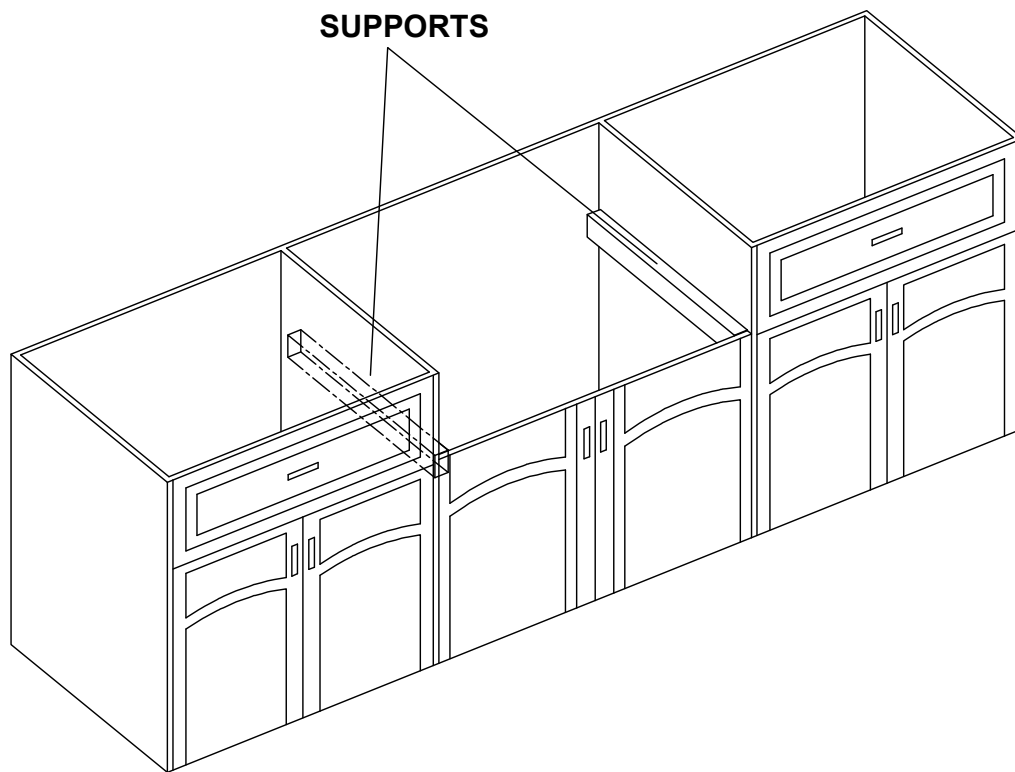


Step 1. Measure & Build Supports

- Measure the actual height of apron.
- Build supports on inside of cabinet based on sink measurements.

Installer Tip: Support Options

- 1 1/4" Angle Irons
- (2) 2" x 4'
- 3/4" Plywood

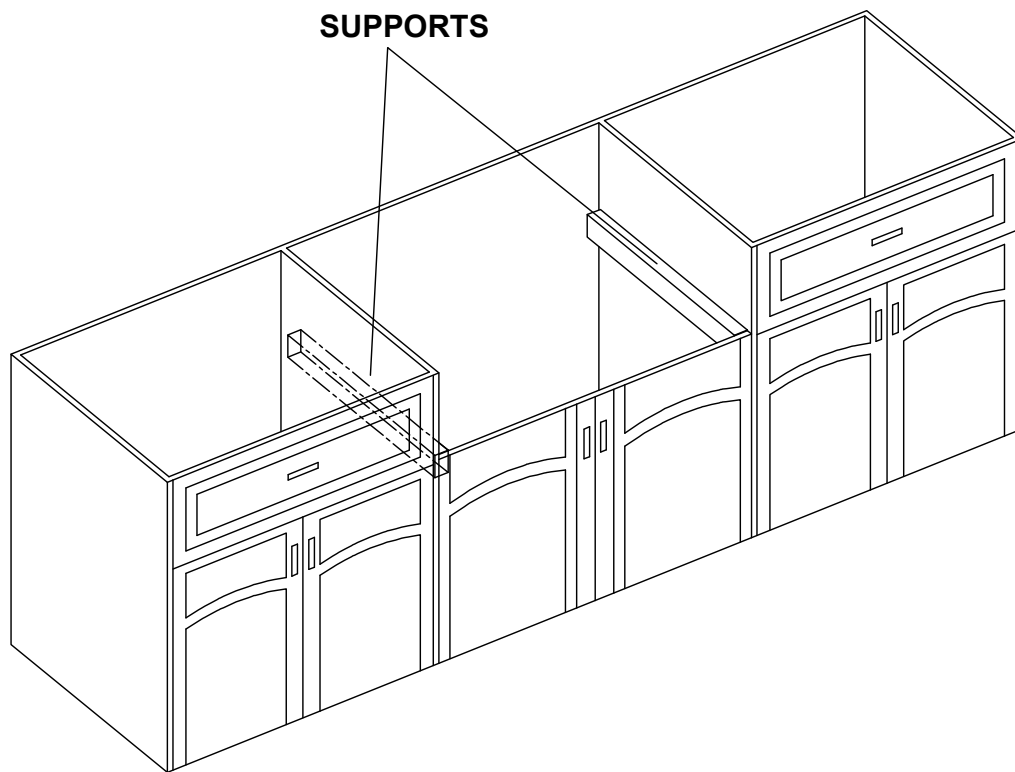


Step 1. Measure & Build Supports

- Measure the actual height of apron.
- Build supports on inside of cabinet based on sink measurements.

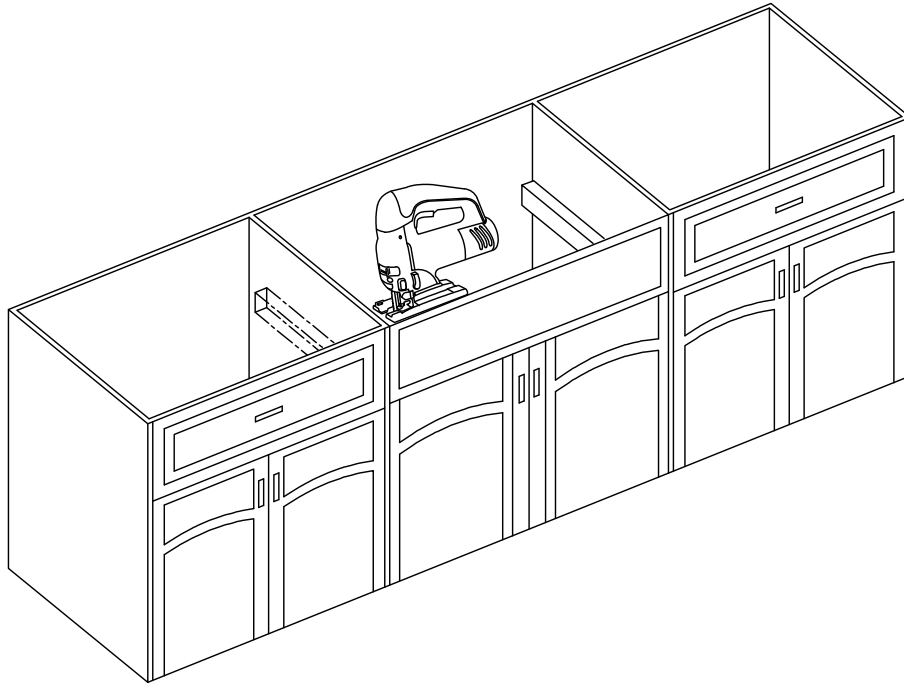
Installer Tip: Support Options

- 1 1/4" Angle Irons
- (2) 2" x 4'
- 3/4" Plywood



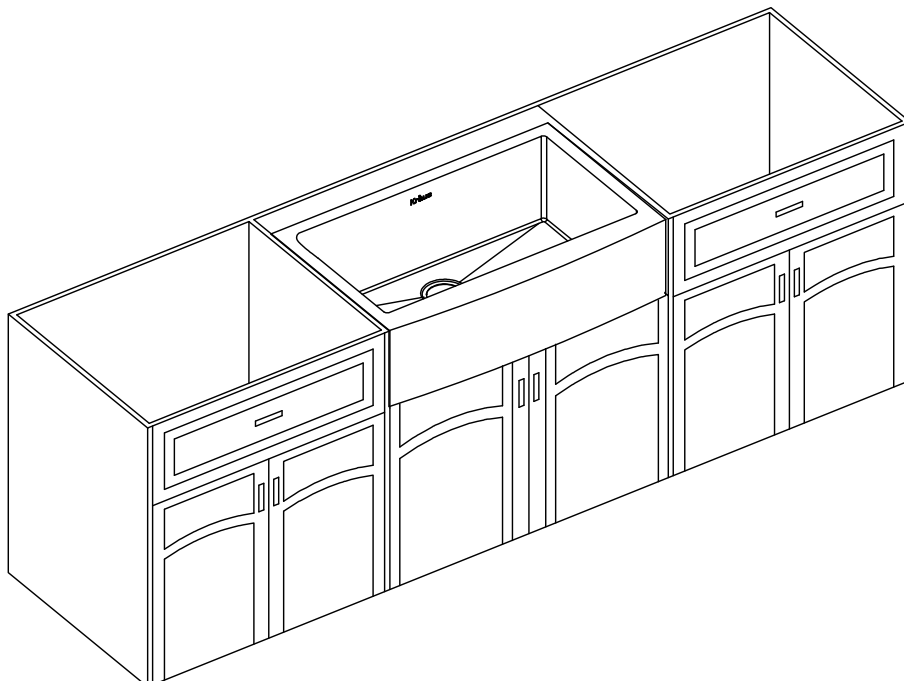
Step 2. Cut Cabinet Front

- Measure height of apron front. Add 1/16" to the dimension when you mark base cabinet front cutout. Use jigsaw to cut.



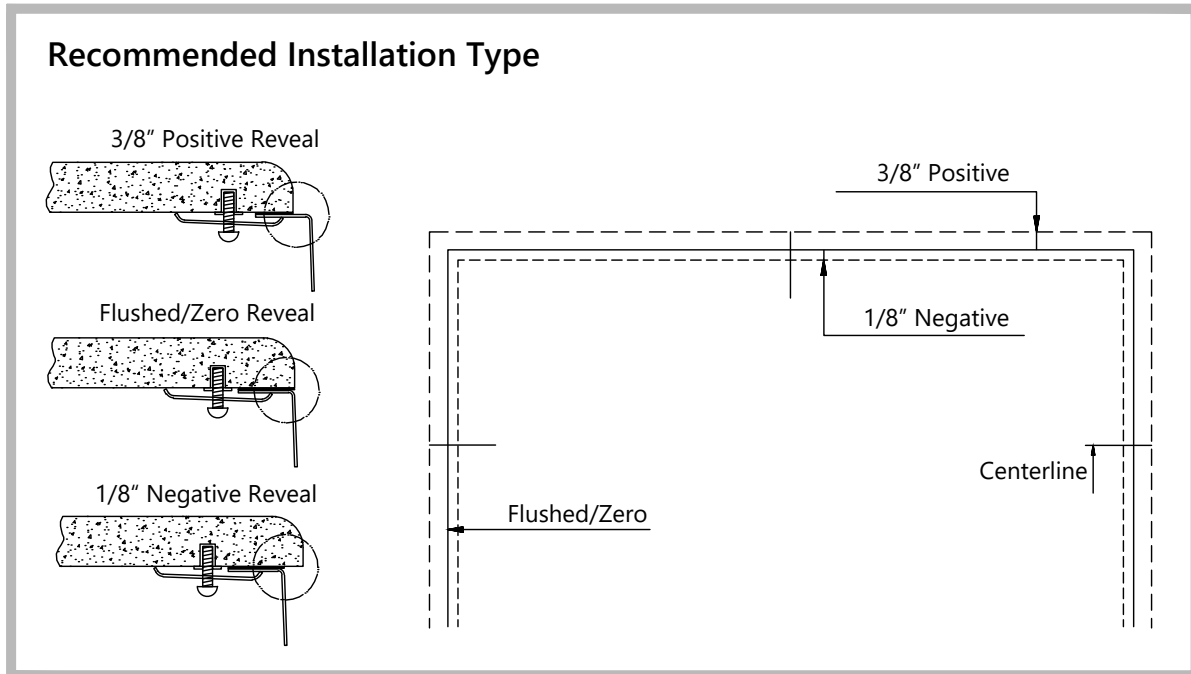
Step 3. Install Sink

- Place sink in opening. The weight of sink should be sustained by the built supports.
- Make sure sink is leveled from front to back and side to side.
- Uses silicone to fill in gaps where necessary.



Step 4. Determine Reveal Type

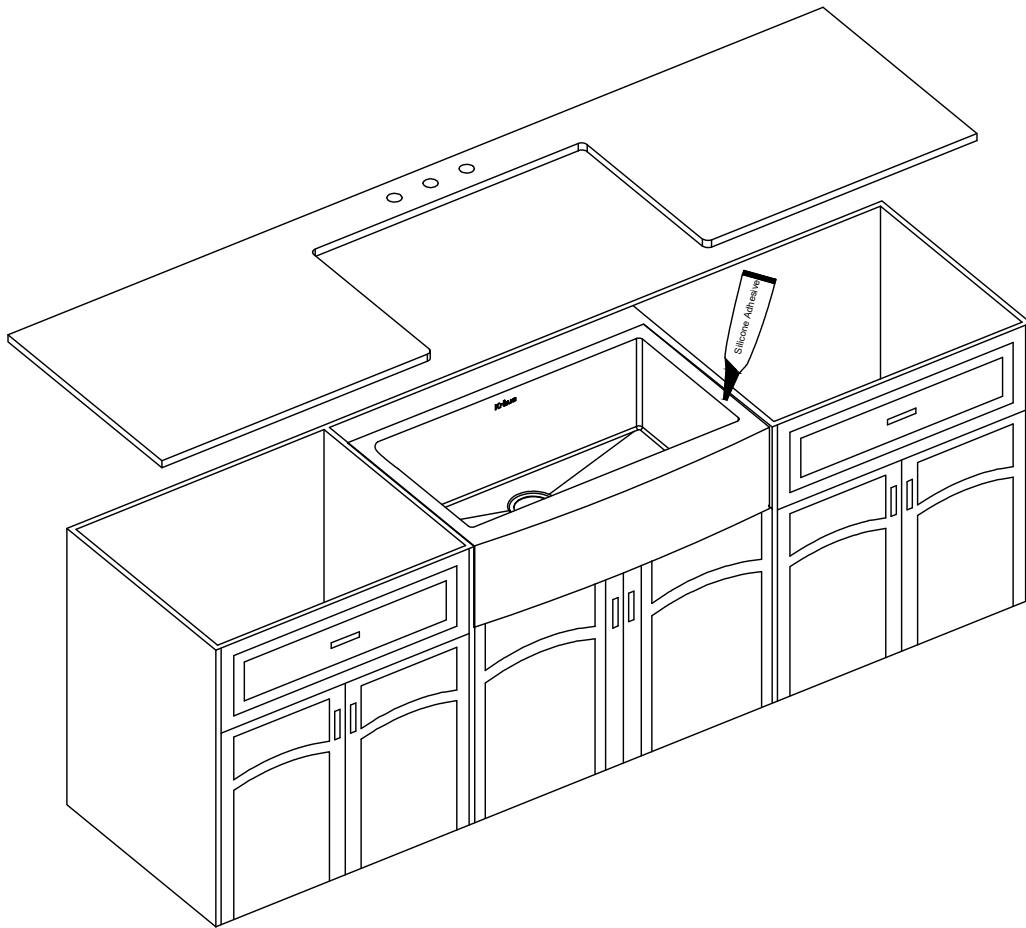
- Use scissors to cut along the line of the paper template for your desired reveal type (Negative, Positive, or Flushed Reveal)



Step 5. Cut Countertop

- Use a bead of silicone (or preferred adhesive) around the rim of the sink. Check the alignment of the sink to the cutout in the countertop. Place countertop cutout hole over sink and press firmly.

Installer Tip: Use acetone or denatured alcohol to remove any excess sealant.



Step 6. Install Plumbing Fixtures

- Connect drain to sink. Connect trap to drain. Connect water supply connections to faucet according to manufacturer's instructions.
- Run water into sink and check for leaks.
- **Note:** Before installation, please check that the drain kit complies with ASME A112.18.2/CSA B125.2 and with CUPC certification.

