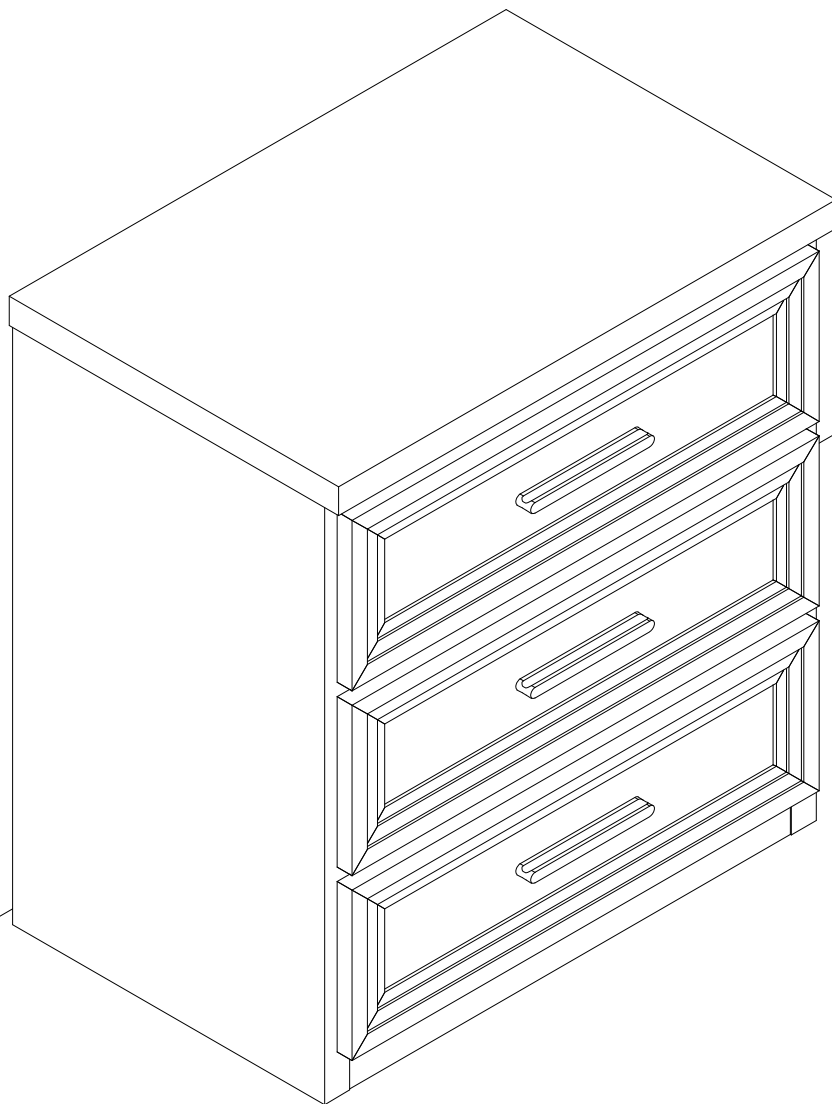
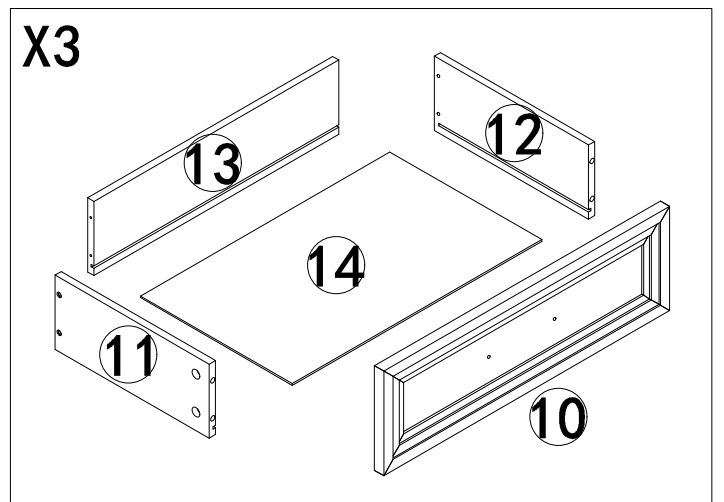
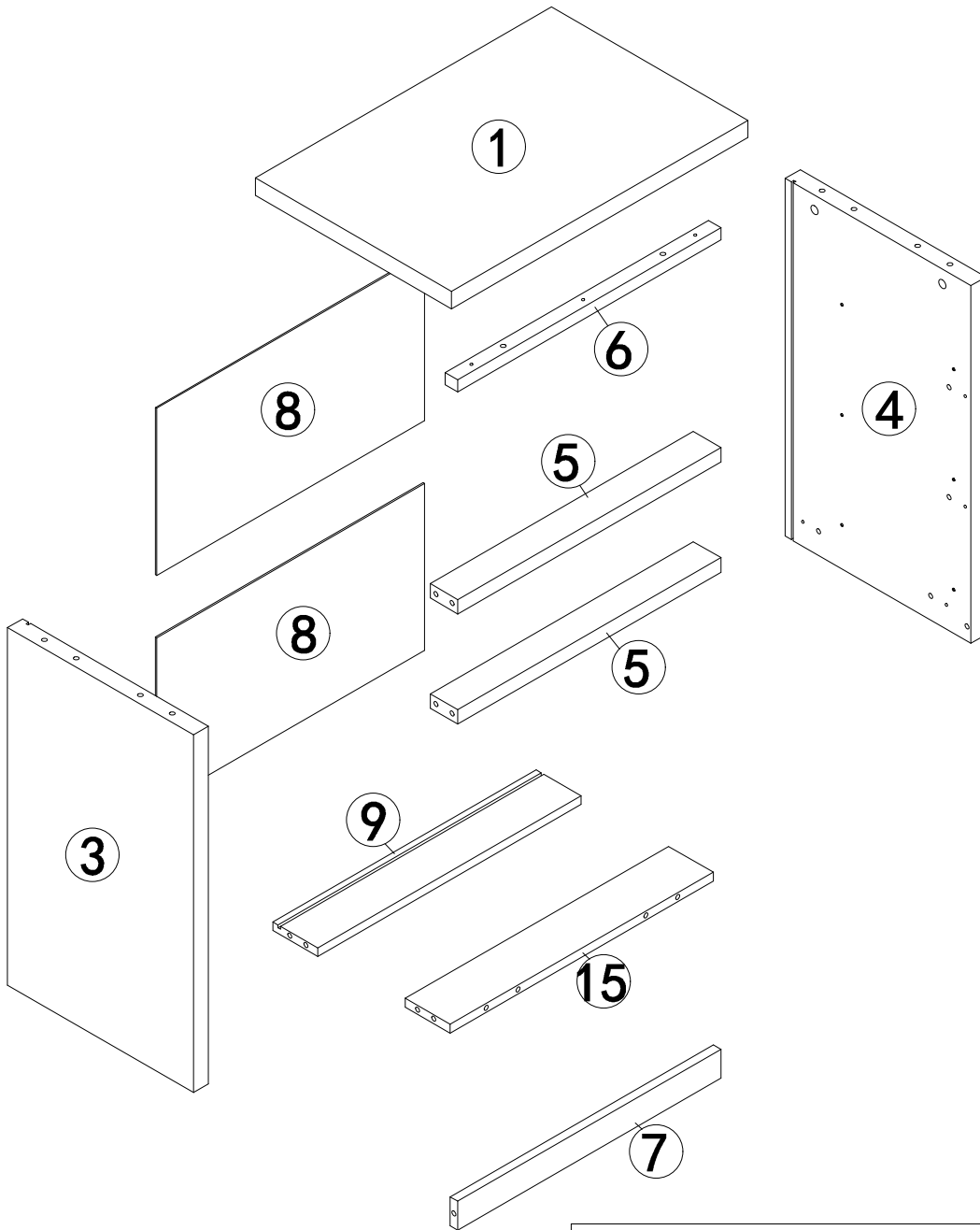


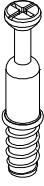


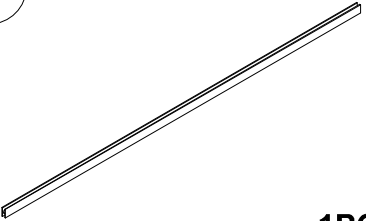

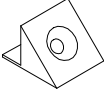

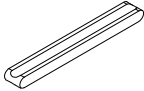
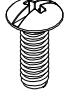
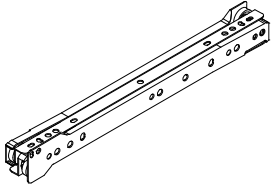

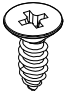
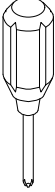
# Assembly Instructions



# PART LIST

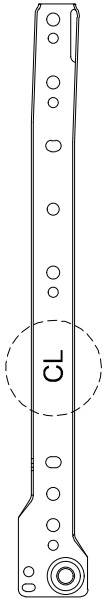
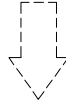
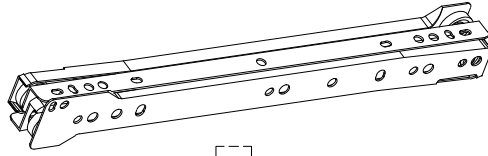


# HARDWARE LIST

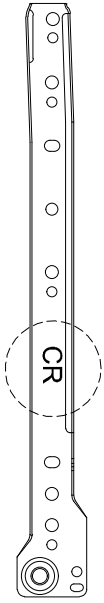
<b>A</b>  Ø6x33mm (26+2)PCS	<b>B</b>  Ø15x9.5mm (26+2)PCS	<b>C</b>  Ø8x30mm (18+2)PCS
<b>D</b>  1PC	<b>E</b>  Ø4x30mm (15+1)PCS	<b>F</b>  (6+1)PCS
<b>G</b>  Ø3x15mm (6+1)PCS	<b>H</b>  3PCS	<b>I</b>  Ø4x10mm (6+1)PCS
<b>J</b>  3SET	<b>K</b>  Ø3x12mm (18+2)PCS	<b>L</b>  Ø4x12mm (12+1)PCS
 1PC		



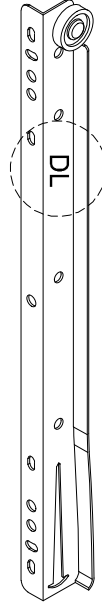
J X 3SET



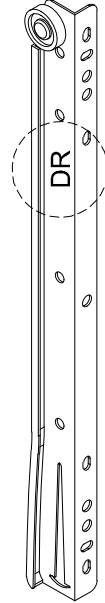
CL



CR



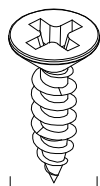
DL



DR

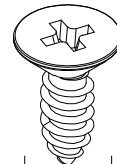


K



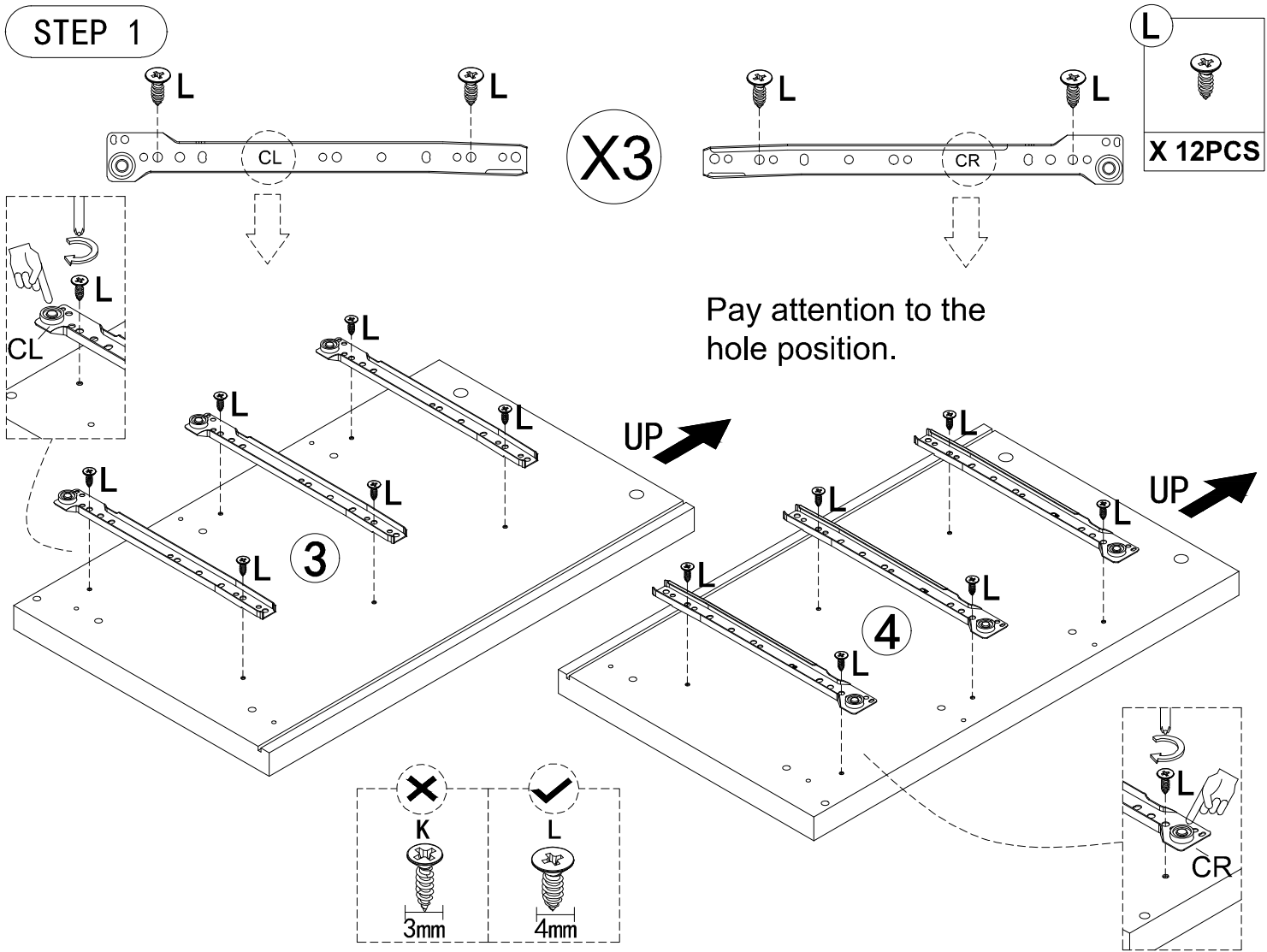
3mm

L

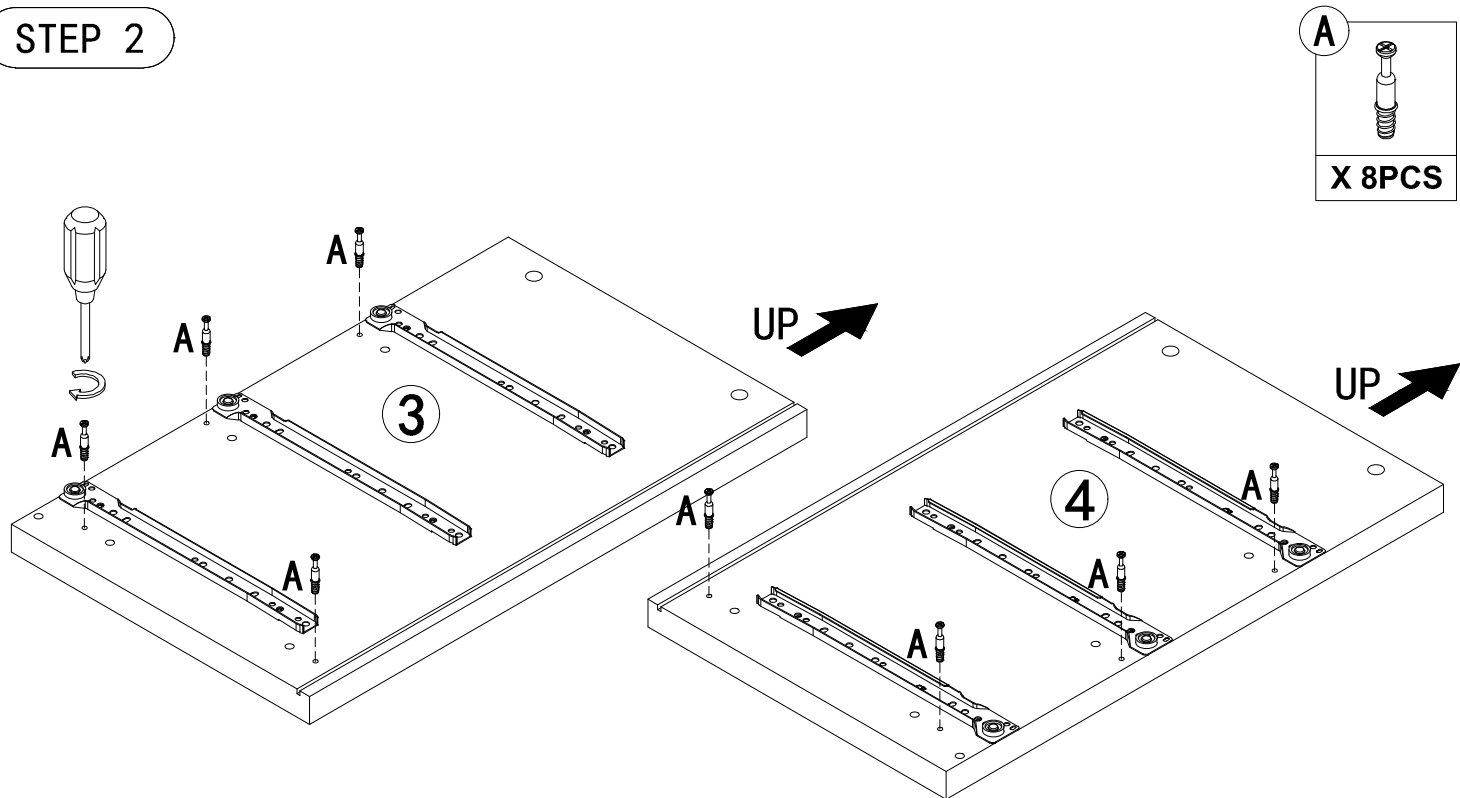


4mm

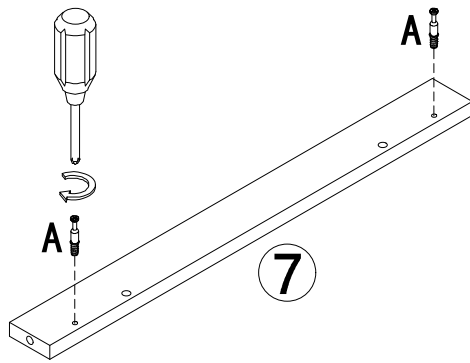
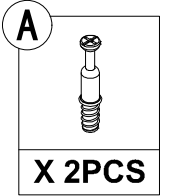
STEP 1



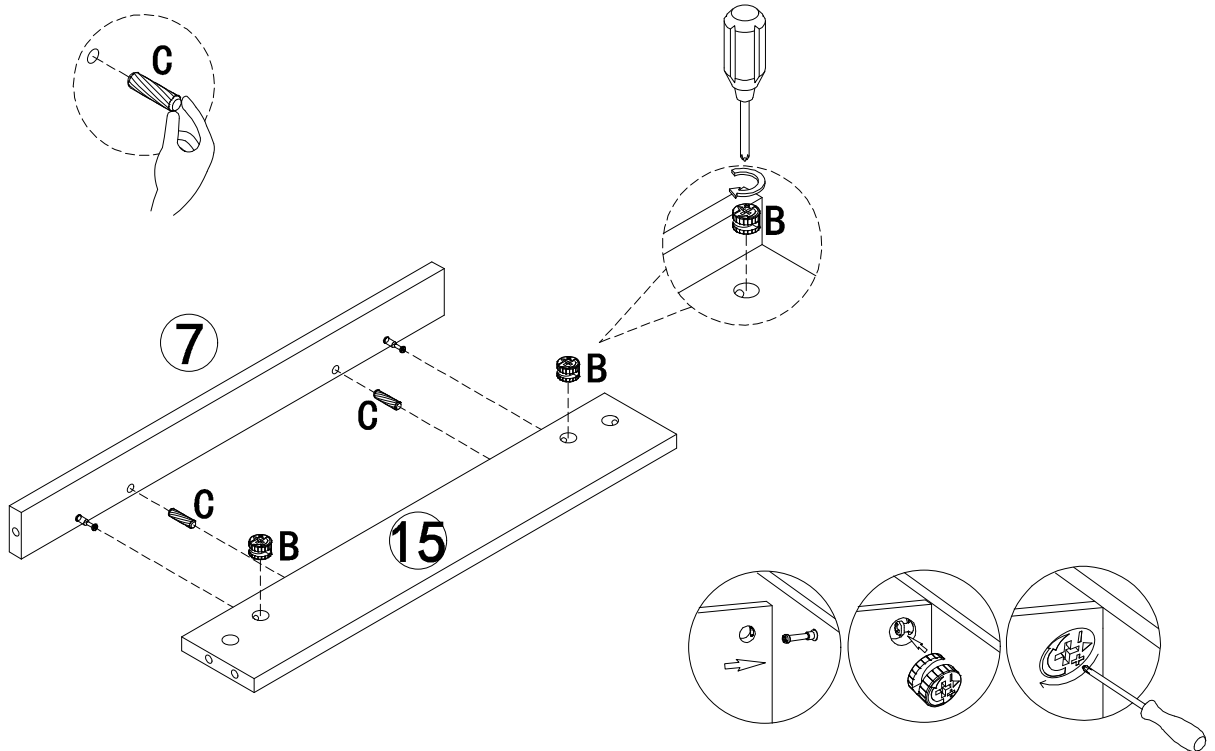
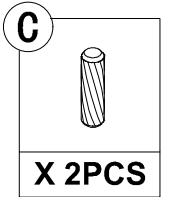
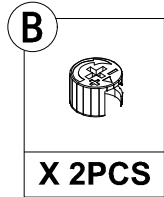
STEP 2



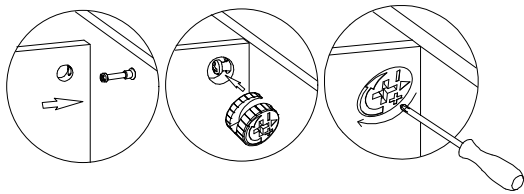
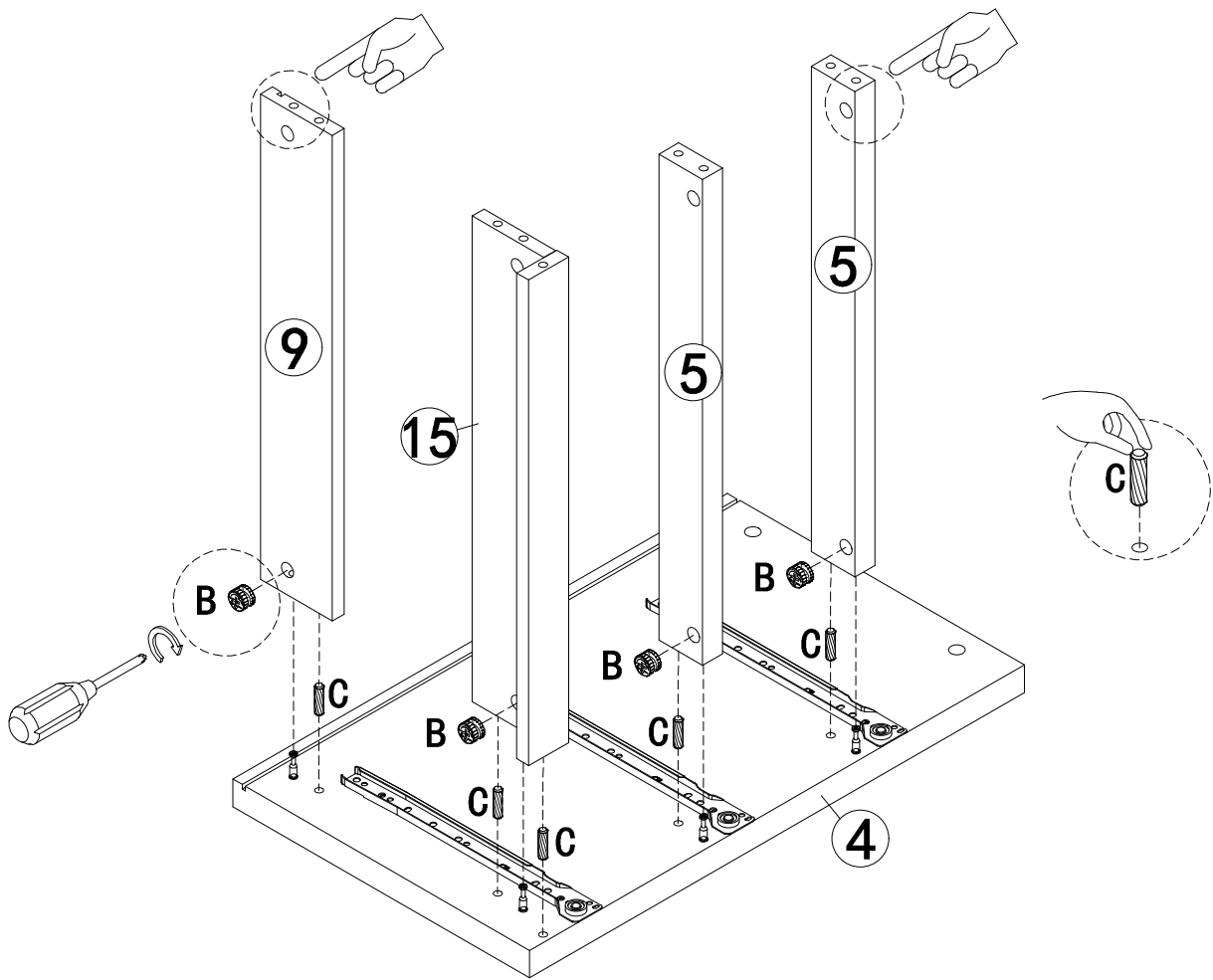
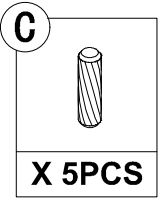
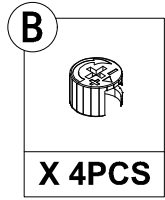
STEP 3



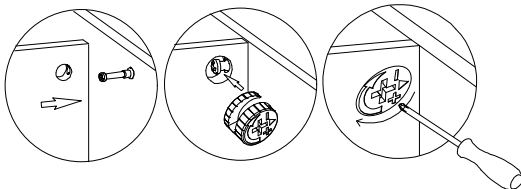
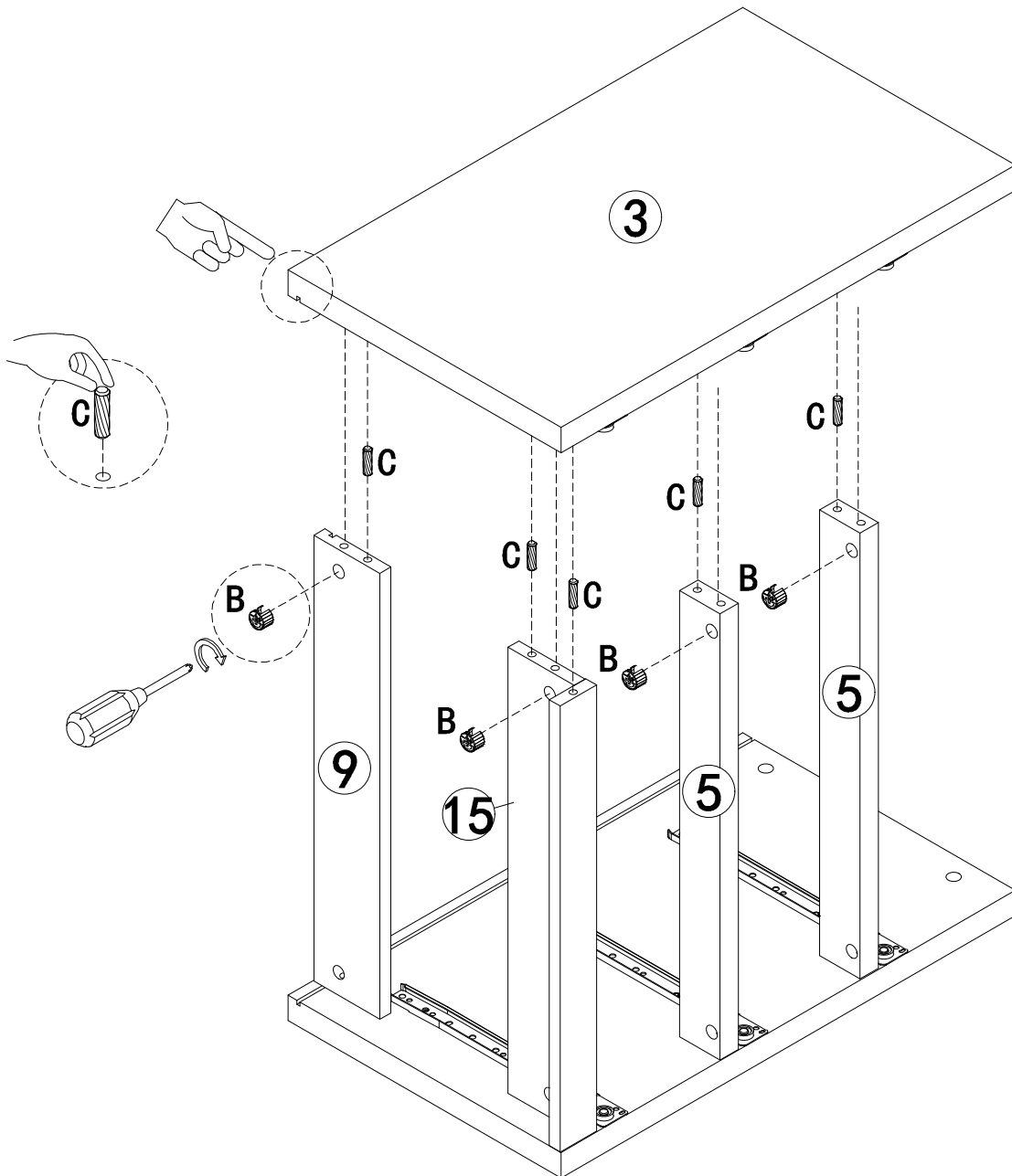
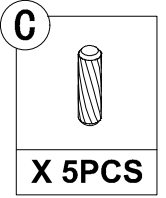
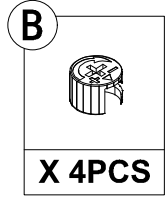
STEP 4





STEP 5

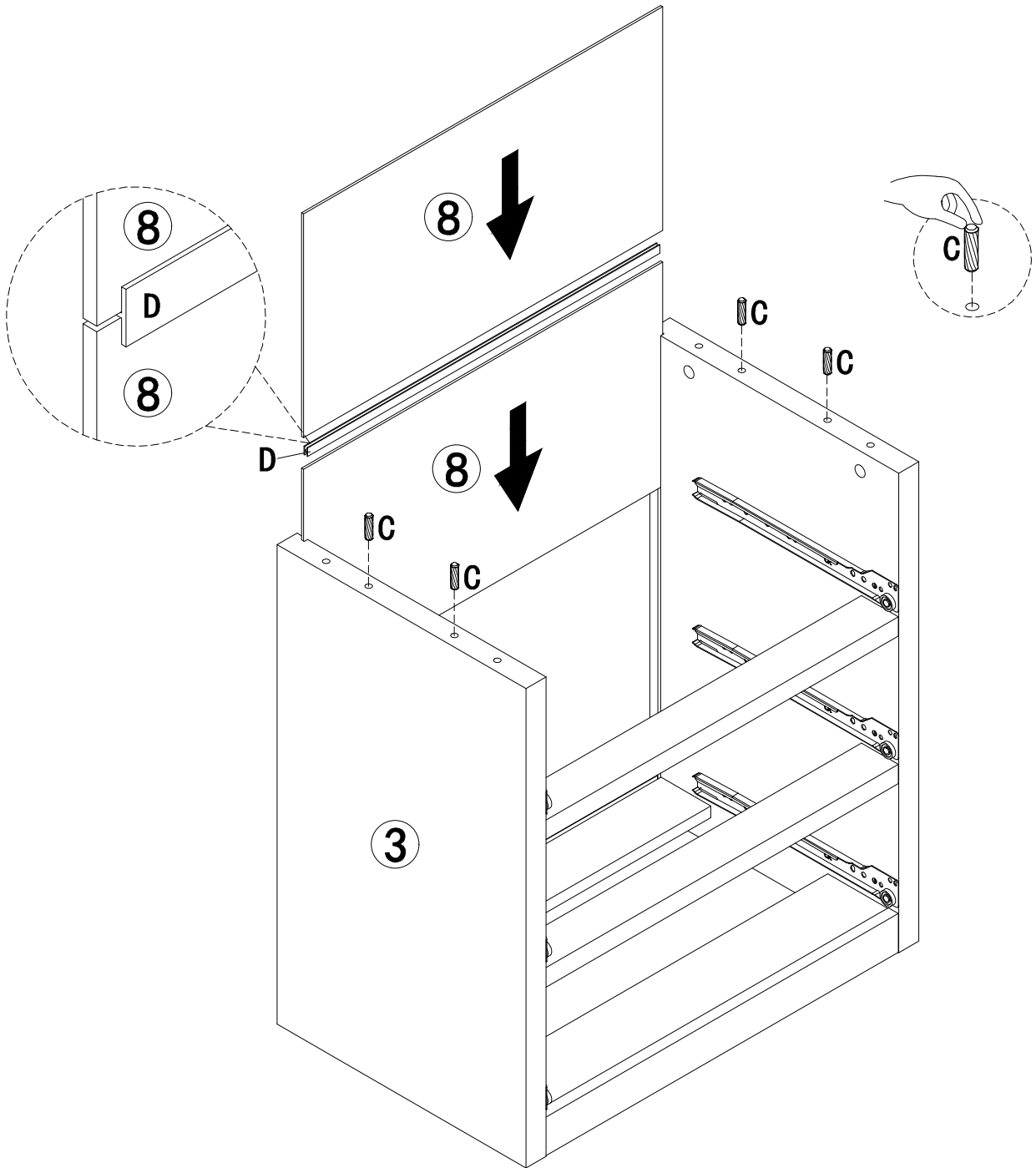


STEP 6

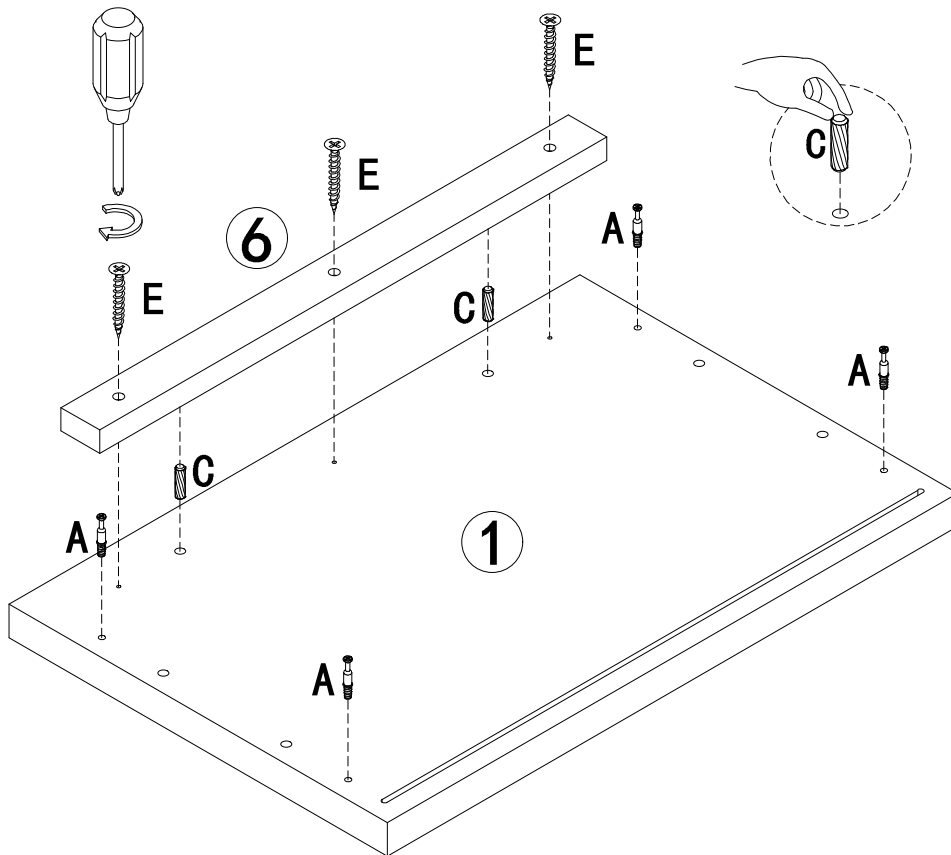
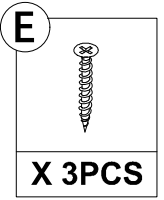
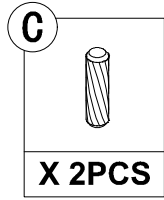
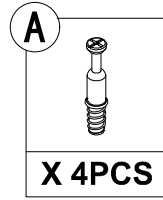


STEP 7

<b>C</b> 	<b>D</b> 
<b>X 4PCS</b>	<b>X 1PC</b>




STEP 8

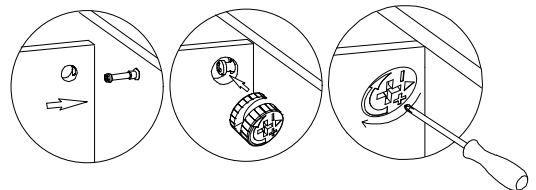
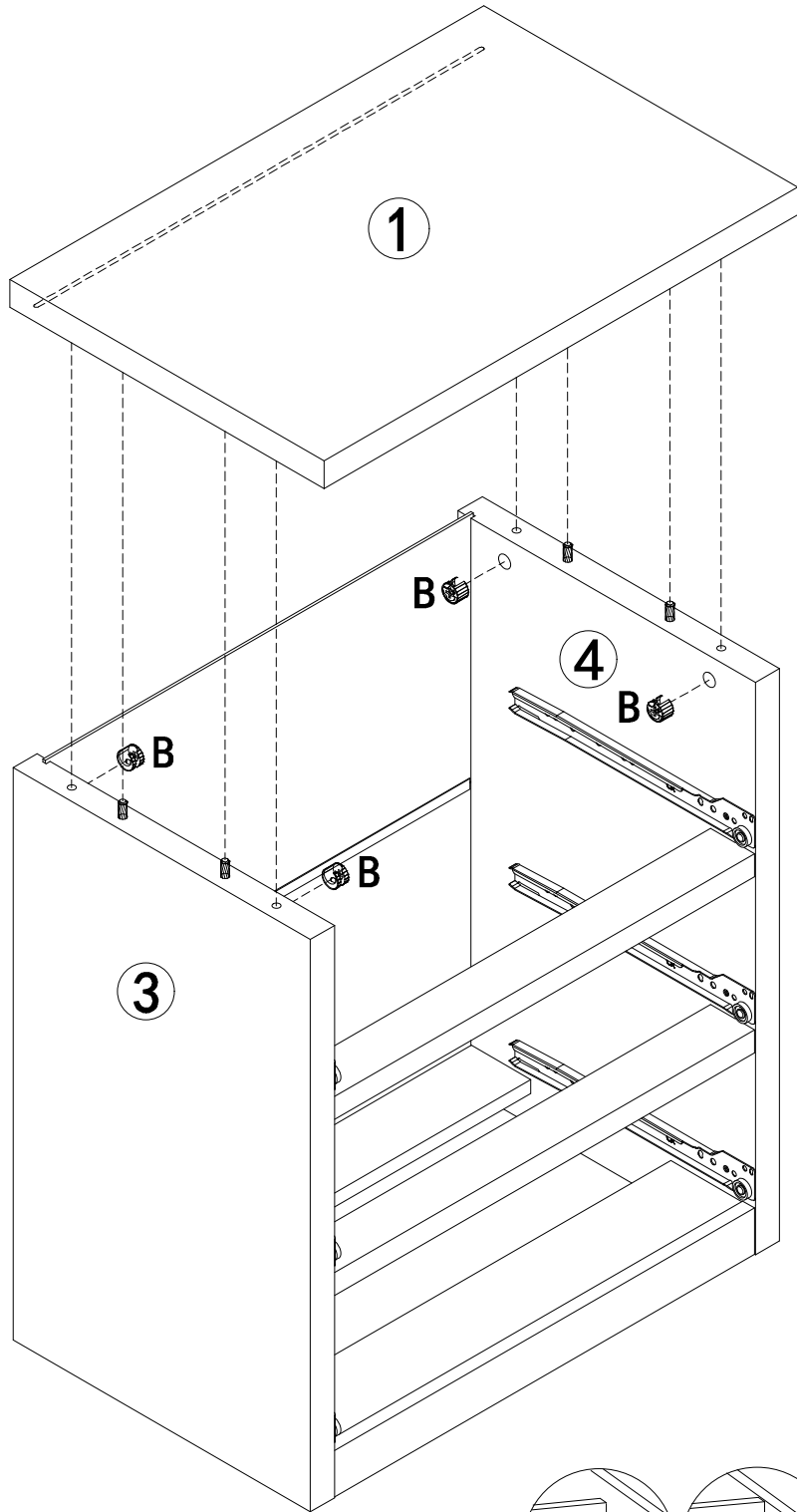


STEP 9

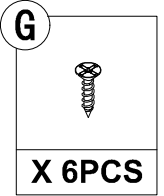
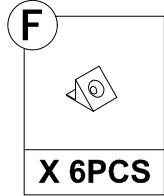
**B**



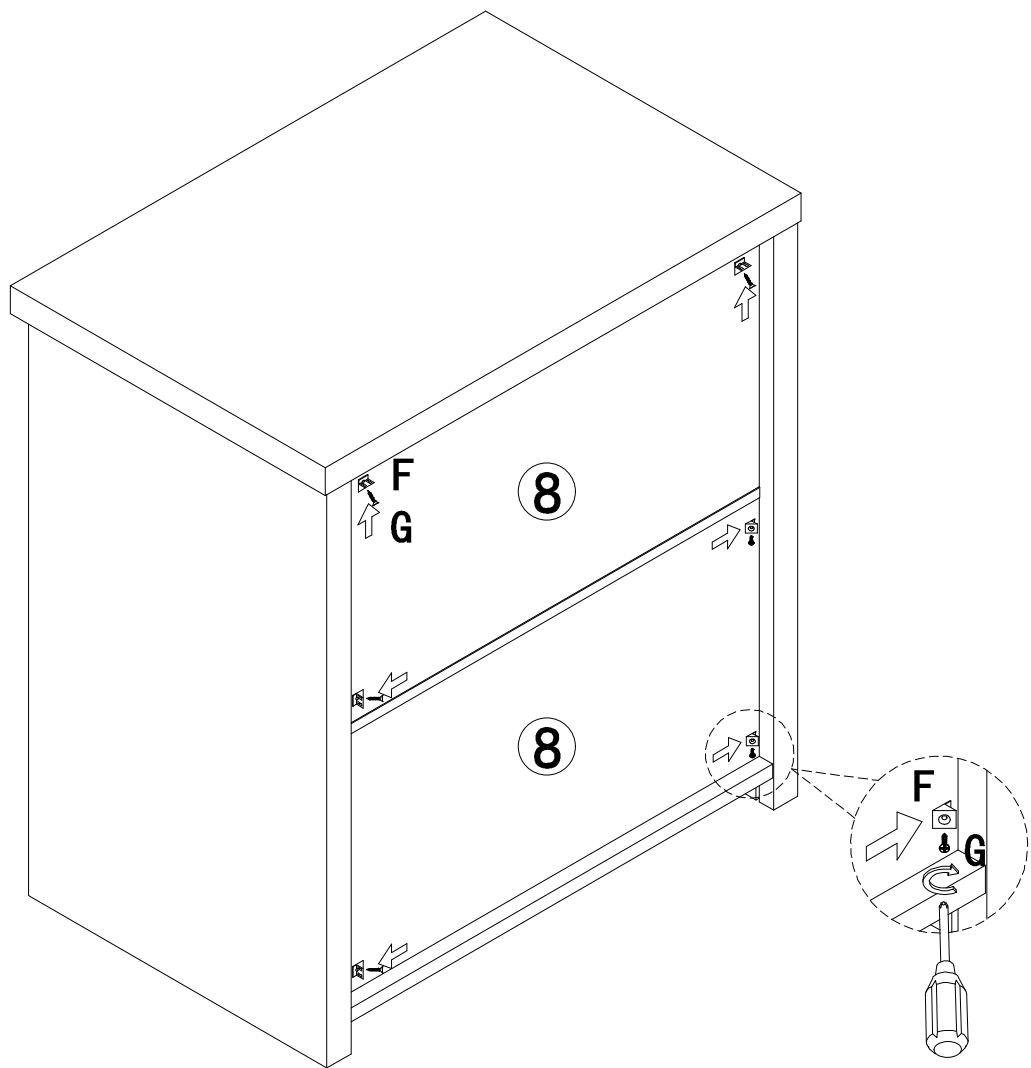
**X 4PCS**



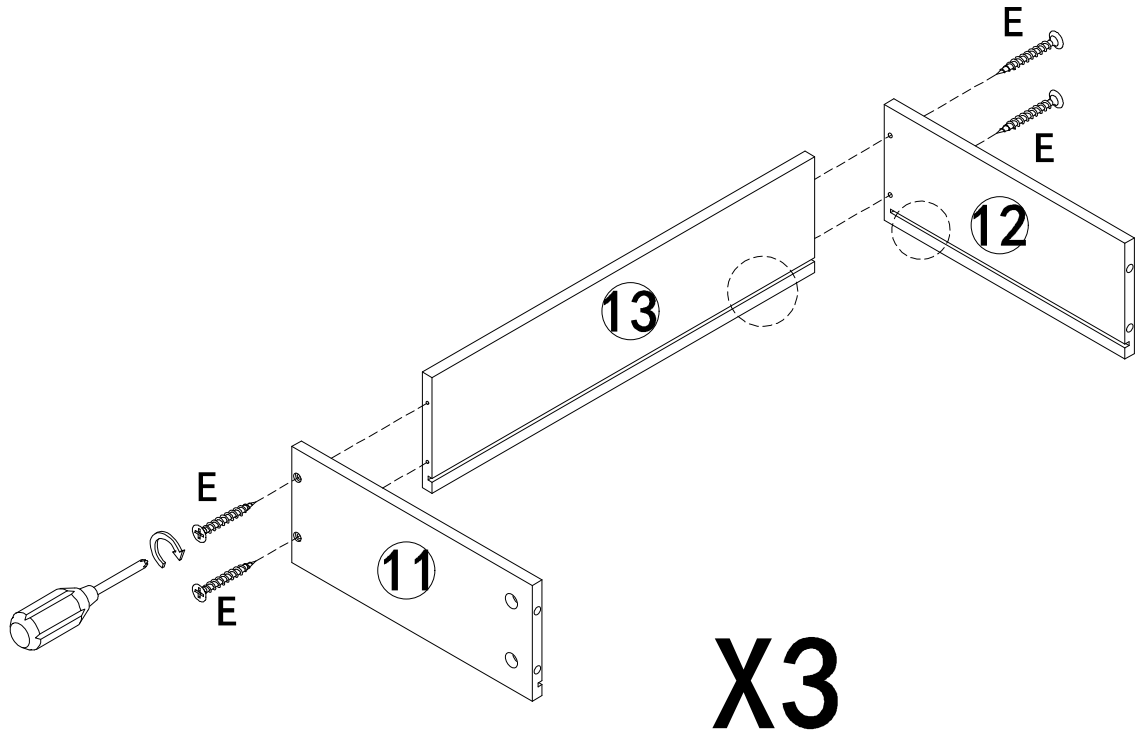
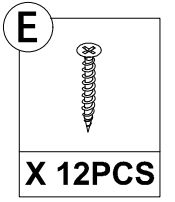
**STEP 10**



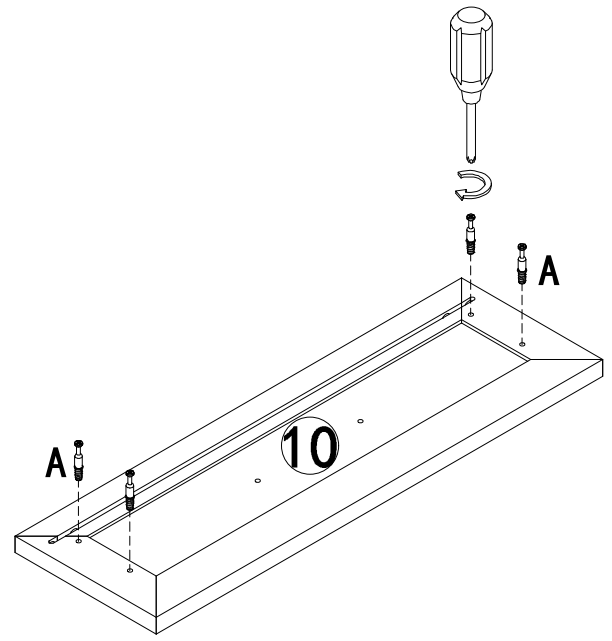
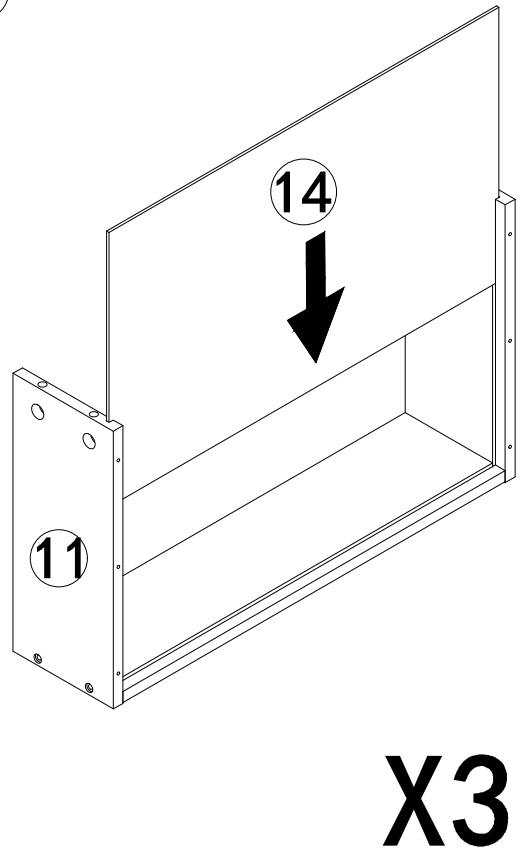
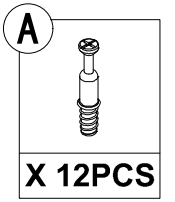
NOTE: To prevent the cabinet from wobbling please be sure to install the back panel fasteners.



STEP 11




STEP 12

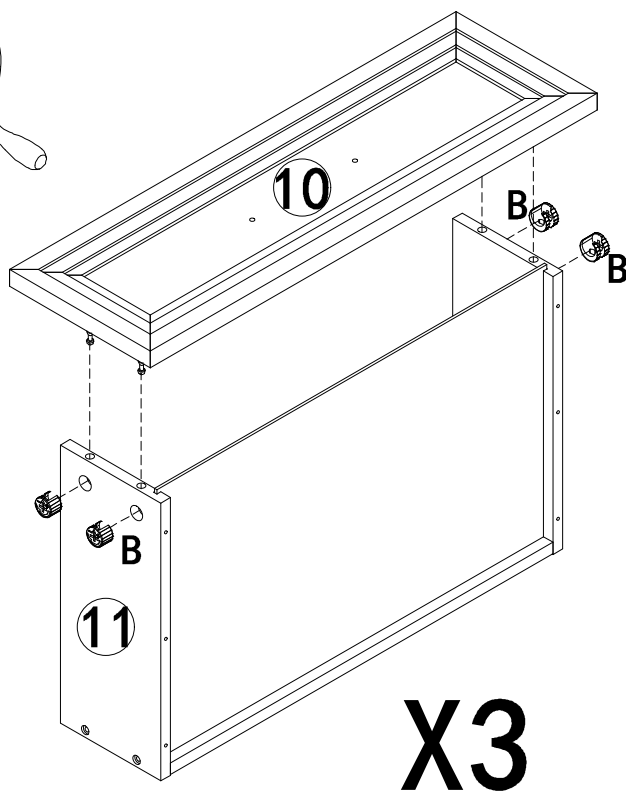
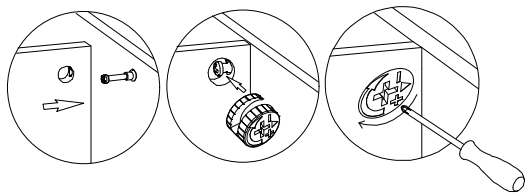


STEP 13

**B**

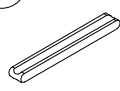


**X 12PCS**



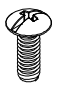
STEP 14

**H**

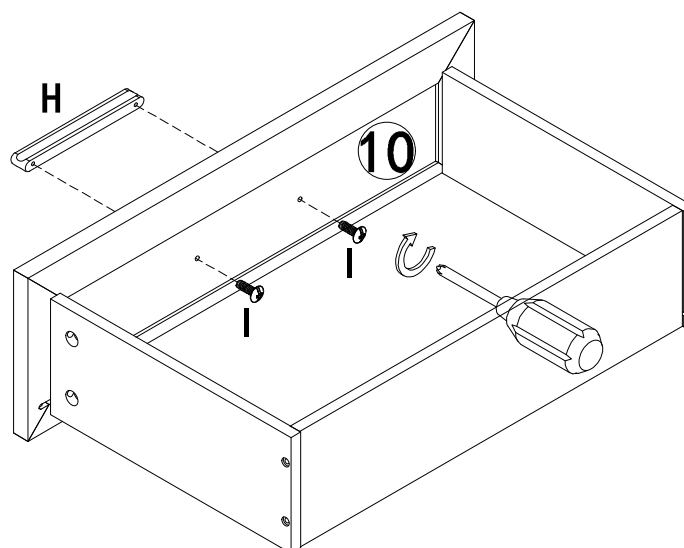


**X 3PCS**

**I**

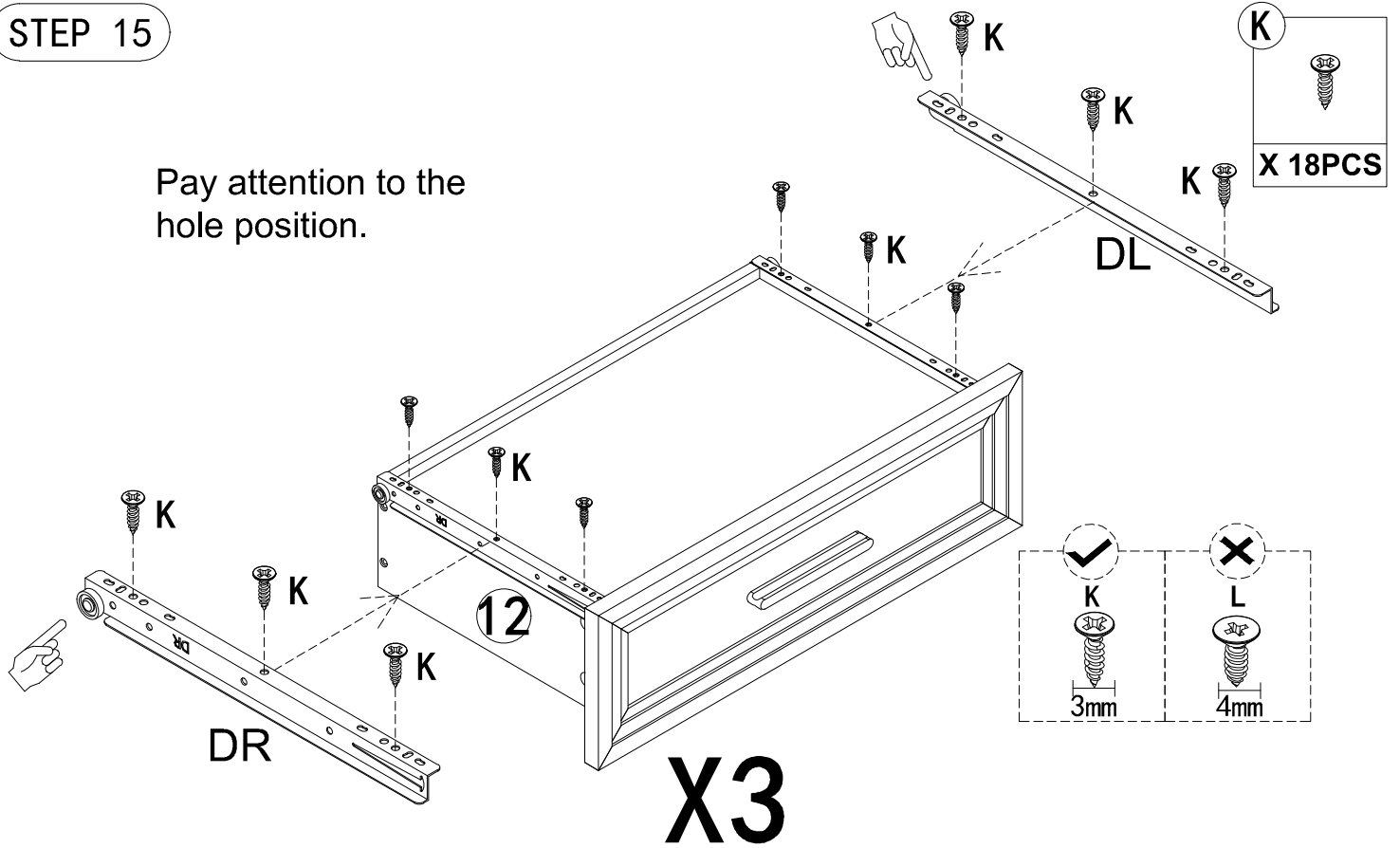


**X 6PCS**



STEP 15

Pay attention to the hole position.



STEP 16

