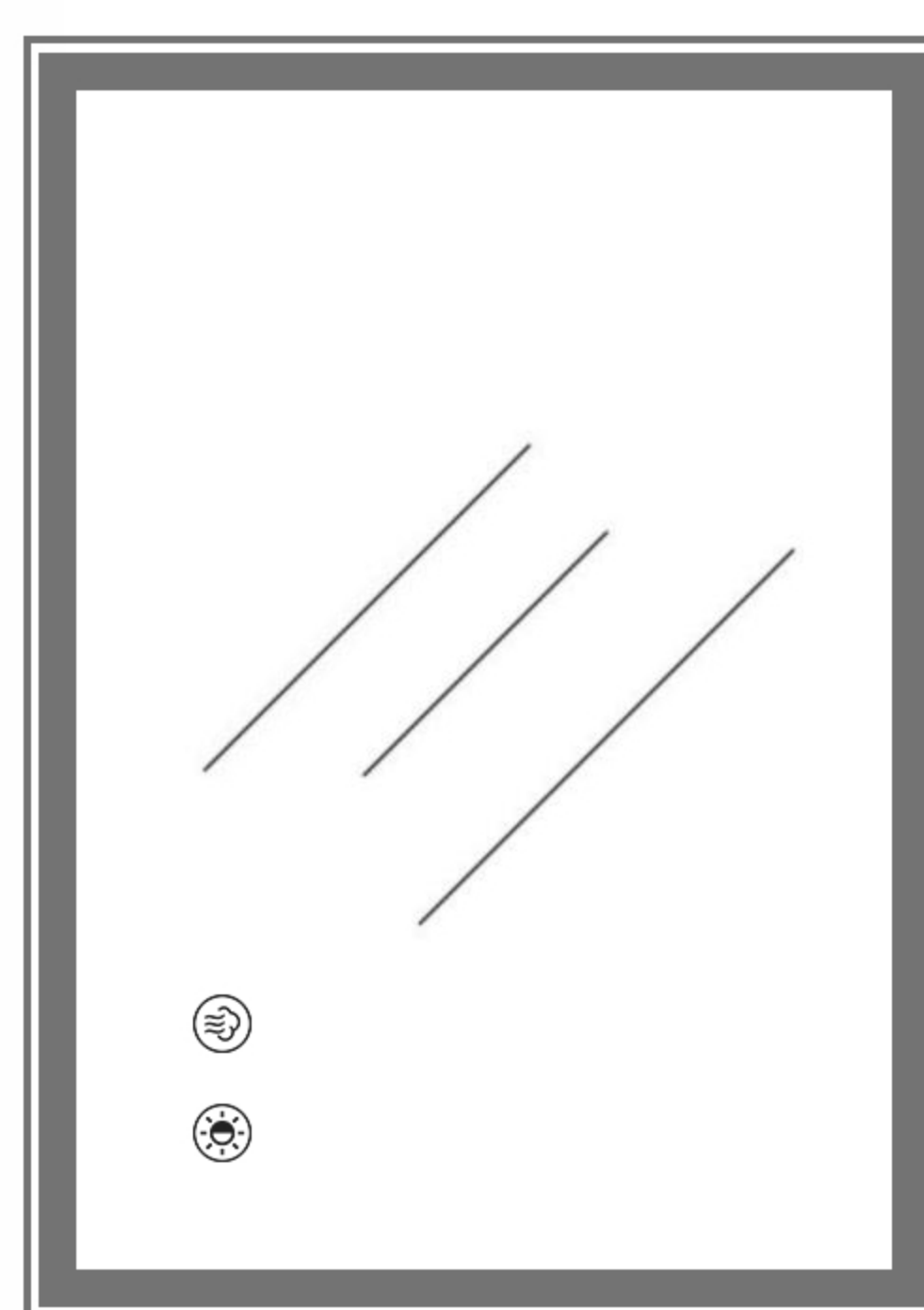


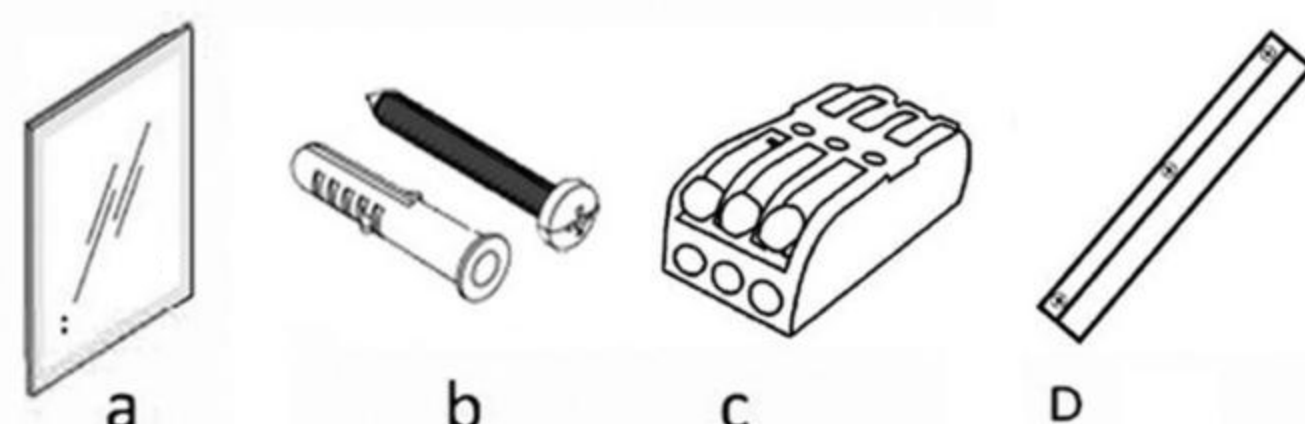
USER MANUAL



LED BATHROOM MIRROR

INSTALLATION GUIDE

PACKAGE CONTENTS

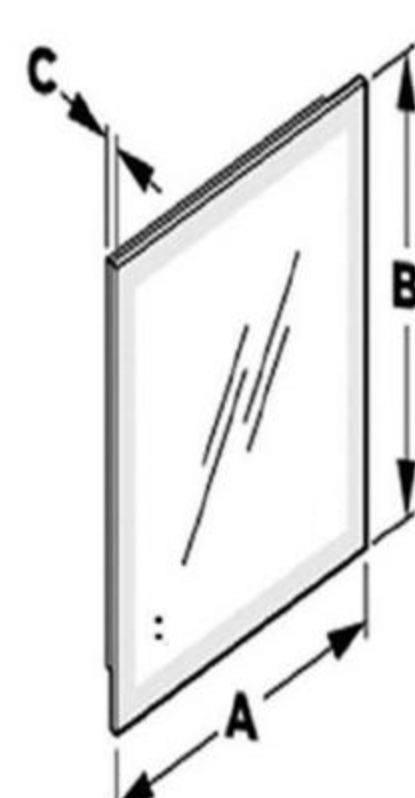


| Piece | Description | Quantity | Piece | Description | Quantity |
|-------|-----------------------|----------|-------|-------------|----------|
| a | LED Mirror | 1 | D | Brackets | 2 |
| b | Wall Anchors & Screws | 4 | | | |
| c | Wire Connector | 1 | | | |

TOOLS REQUIRED

| | | |
|---|--------|-------------|
| ① | | DRILL |
| ② | 15/64" | DRILL BITS |
| ③ | | HAMMER |
| ④ | | SCREWDRIVER |

MOUNTING WAY



1

LED BATHROOM MIRROR

AFTER-SALE GUIDE

Specifications:

| | |
|-------------------|-------------------------------------|
| Connection | Hardwired/ Plug-in |
| Color Temperature | 3000k~6000K |
| Switch Type | Touch On/Off |
| Wattage | 60W |
| Voltage | 100- 130V |
| Light Color | Warm white/Natural white/Cool white |
| Memory Function | Yes |
| Defog Function | Yes |
| CRI | 95+ |

Thank You For Choosing Our Appliance!

Warranty:

30 Days Money Back Guarantee:
We offer a 30 days satisfaction guarantee. If you're unsatisfied for any reason, don't hesitate to contact us for a full refund.

5-Year Warranty for Quality-Related Issues

Customers can contact us for refund or replace your product if there are defective due to faulty materials, craft or function within 5 year of purchase or delivery.

1. Damage is caused by not carrying out the recommended appliance maintenance.
2. Accidental damage, faults caused by negligent use or care, misuse, neglect, careless operation or handling of the appliance is not by our operating manual.
3. Use of the device for anything other than regular domestic household purposes.
4. Faulty installation.

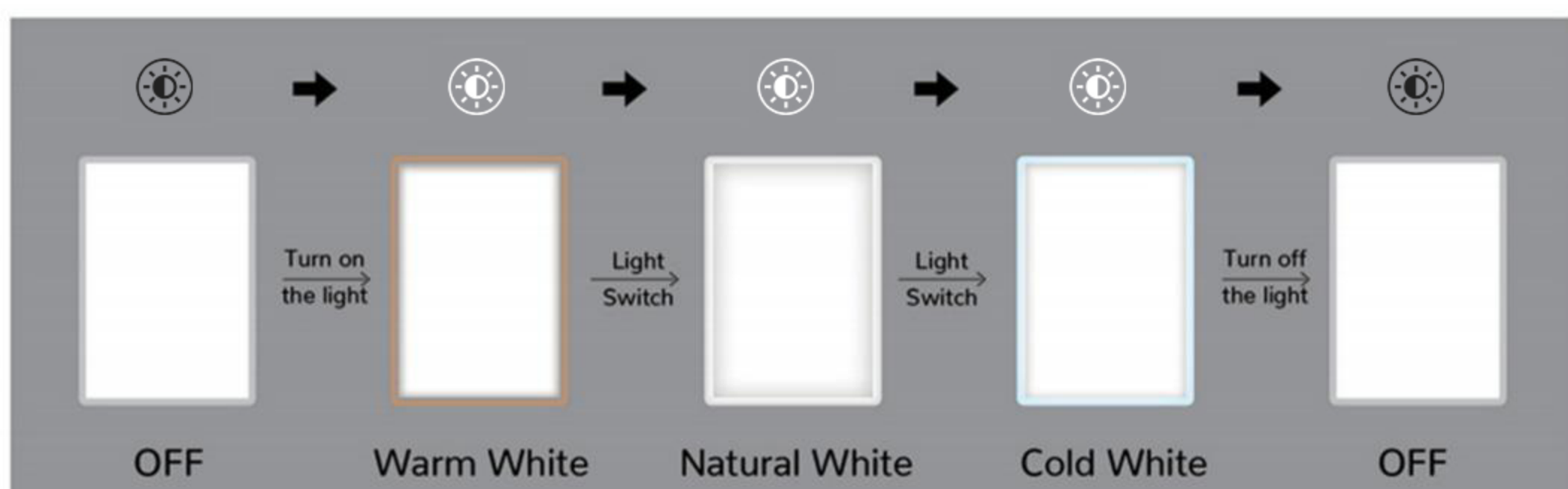
If you are in any doubt as to what is covered by your guarantee, please contact us.

6

LED BATHROOM MIRROR

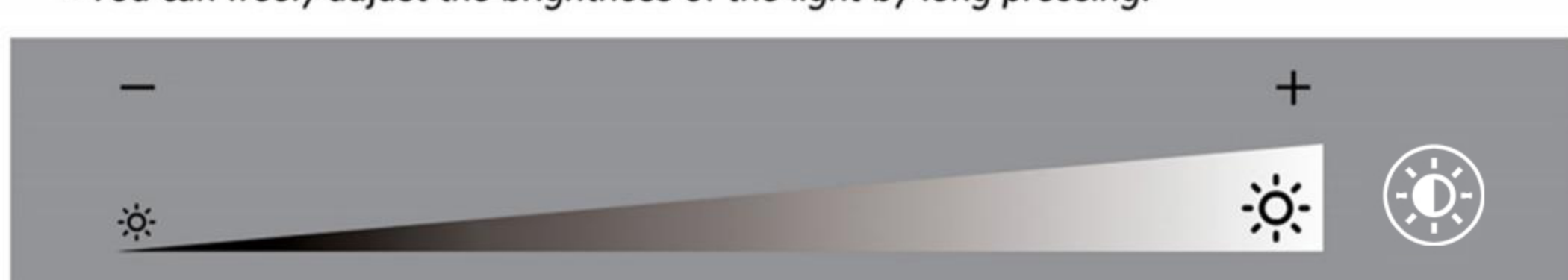
OPERATION INSTRUCTION

Color Temperature Adjustment:

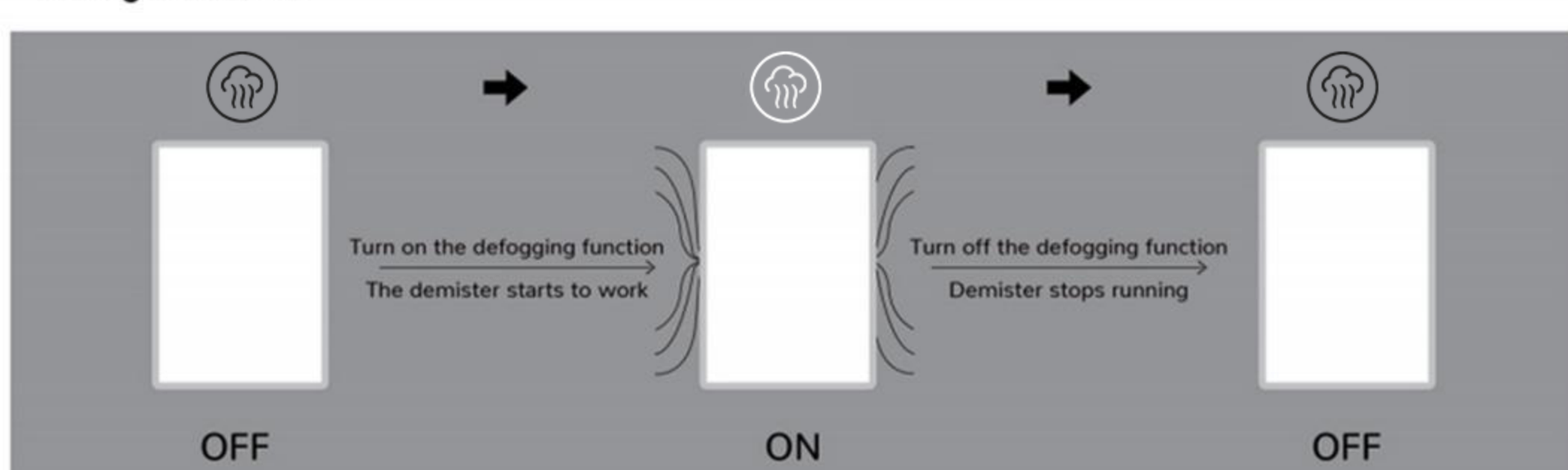


Dimming:

- You can freely adjust the brightness of the light by long pressing.



Defog function:



- Memory function:** Set the brightness and color temperature you want, after 10s, it will keep your setting. when restart in the next time, it returns to the previous state of use.
- Wall switch control:** Once the wall switch is OFF, the all settings will be back to factory settings.

5

LED BATHROOM MIRROR

INSTALLATION GUIDE

IMPORTANT SAFETY INSTRUCTIONS

Pre-Installation

PLANNING INSTALLATION

Compare all parts with the part listed in the package contents section if any part appears missing or damaged. Do not install and use this light. Contact customer service.

WARNING: RISK OF ELECTRICAL SHOCK

- Turn off electrical power at fuse or circuit breaker box before wiring fixture to the power supply.
- Turn off the power when you perform any maintenance.
- Please verify that the supply voltage is correct by comparing it with the luminaire label information.
- Make all electrical and grounded connections under the National Electrical Code, and any applicable local code requirement.
- All wiring connections should be capped with UL approved wire connectors.

CAUTION: RISK OF INJURY

- Wear gloves and safety glasses when removing luminaire from the carton, installing, servicing or performing maintenance.
- Avoid direct eye exposure to the light source while it is on.
- Account for small parts and destroy packing material, as these may be hazardous to children.
- Mirrors are heavy. Get assistance lifting the unit. This installation is most straightforward when performed by two people.

WARNING: RISK OF BURN

- Allow fixture to cool before handling. Do not touch enclosure or light source.
- Follow all lamp manufacturer's warnings, recommendations and restrictions for driver type, burning position, mounting locations/methods, replacement, and recycling.

CAUTION : RISK OF FIRE

- Keep combustible and other materials that can burn away from luminaire and lamp/lens.

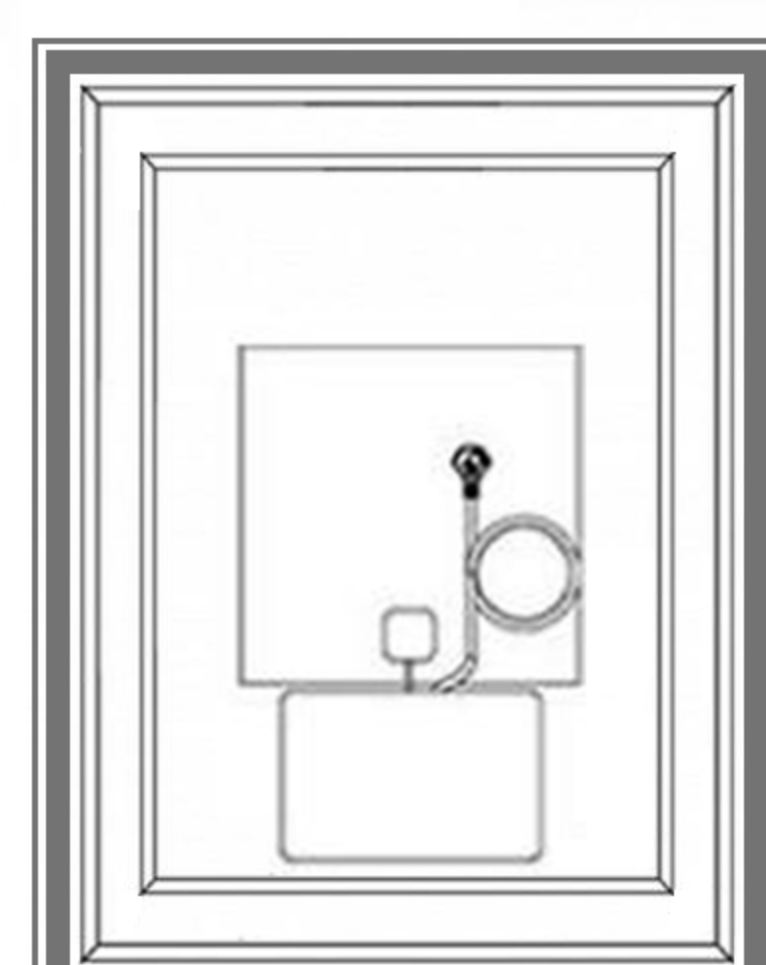
2

INSTALLATION GUIDE

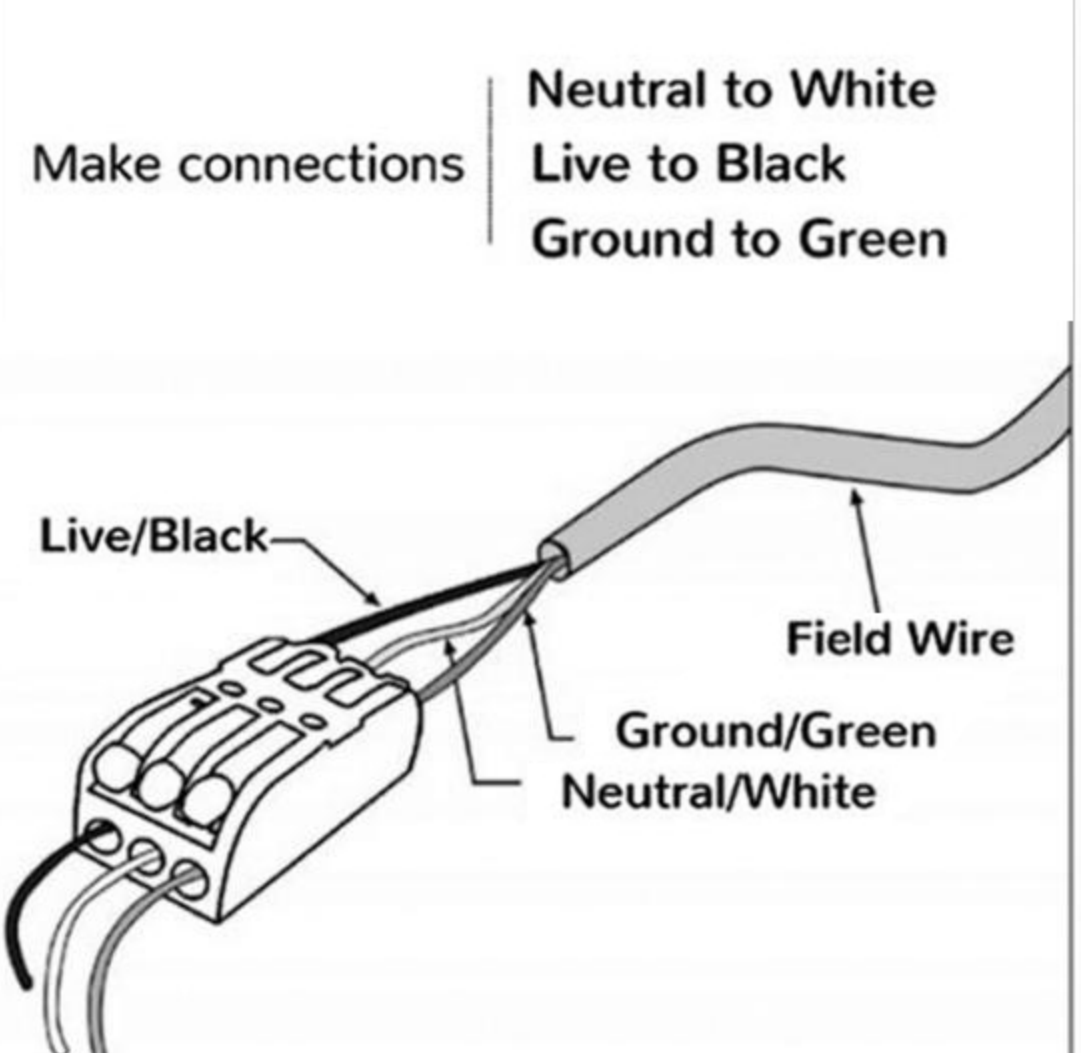
ELECTRIC CONNECTIONS

ALL WIRING SHOULD BE DONE BY A QUALIFIED LICENCED ELECTRICIAN

- WARNING:** Shut off power before wiring the mirror.
- WARNING:** An Electrical option mirror must be wired to a 20 Amp GFI (Ground Fault Interrupter) protected circuit when used in bathrooms and all other locations required by the National Electric Code.
- WARNING:** This mirror must be connected to a grounded, metal permanent wiring system or an equipment-grounding conductor must be run with the circuit conductors and connected to the equipment grounding terminal or lead on the mirror.
- CAUTION:** Requires 120 VAC 20 Amp 6FI protected circuit.



Electric wiring: Be sure to provide enough wire to make the proper and safe connection to the Field Power.

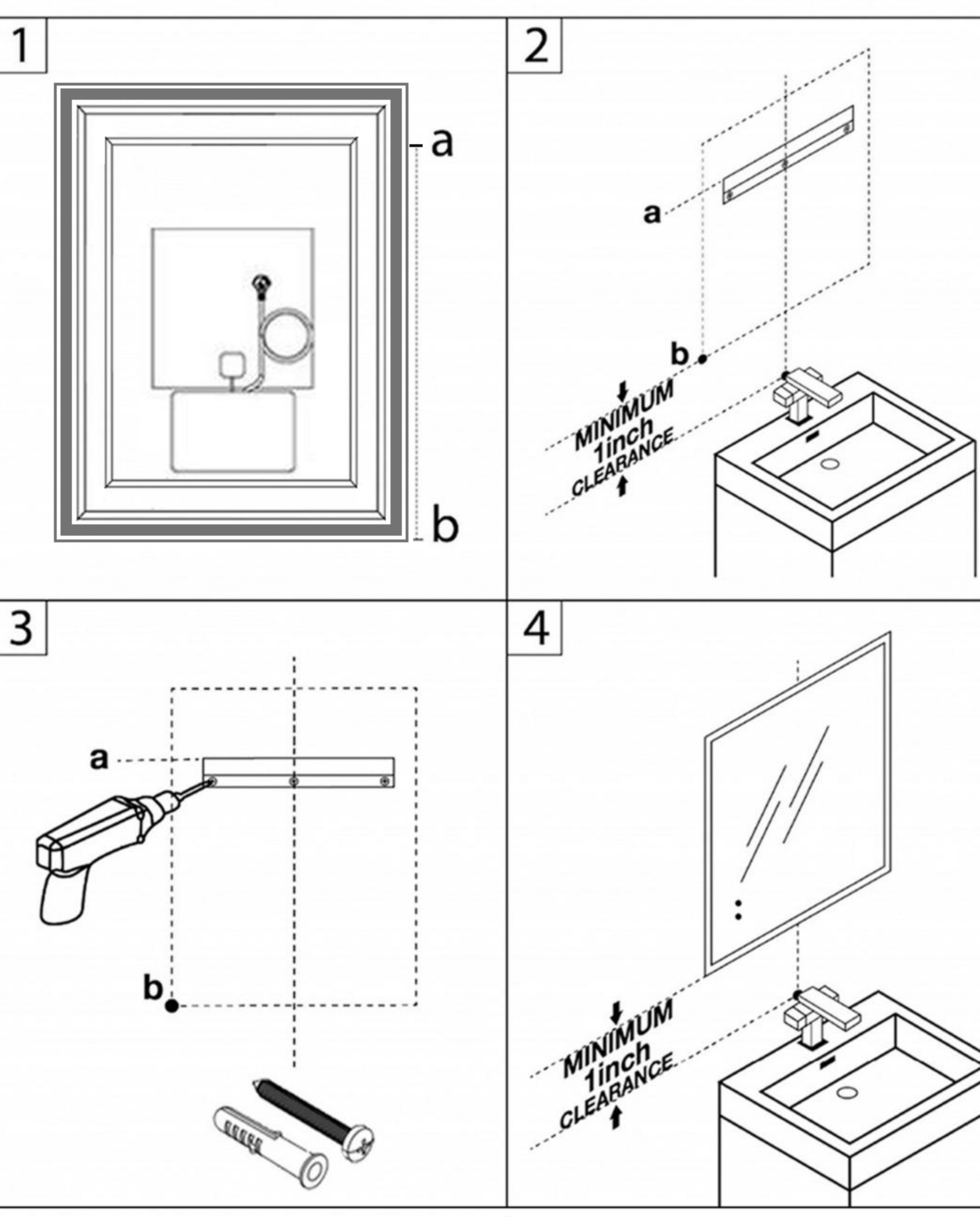


3

LED BATHROOM MIRROR

INSTALLATION GUIDE

INSTALLATION INSTRUCTIONS



4