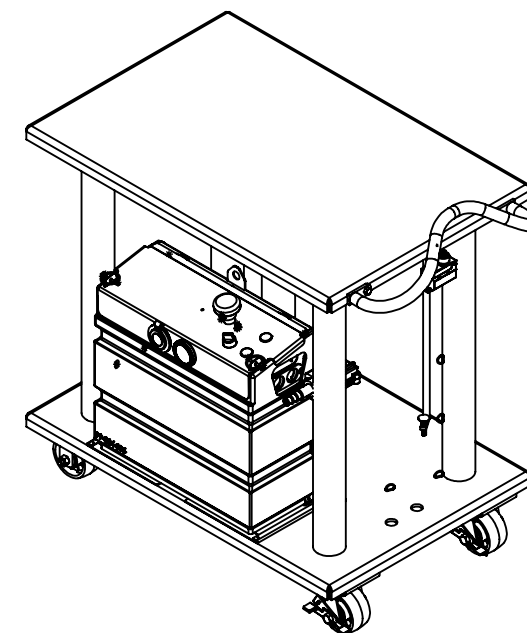
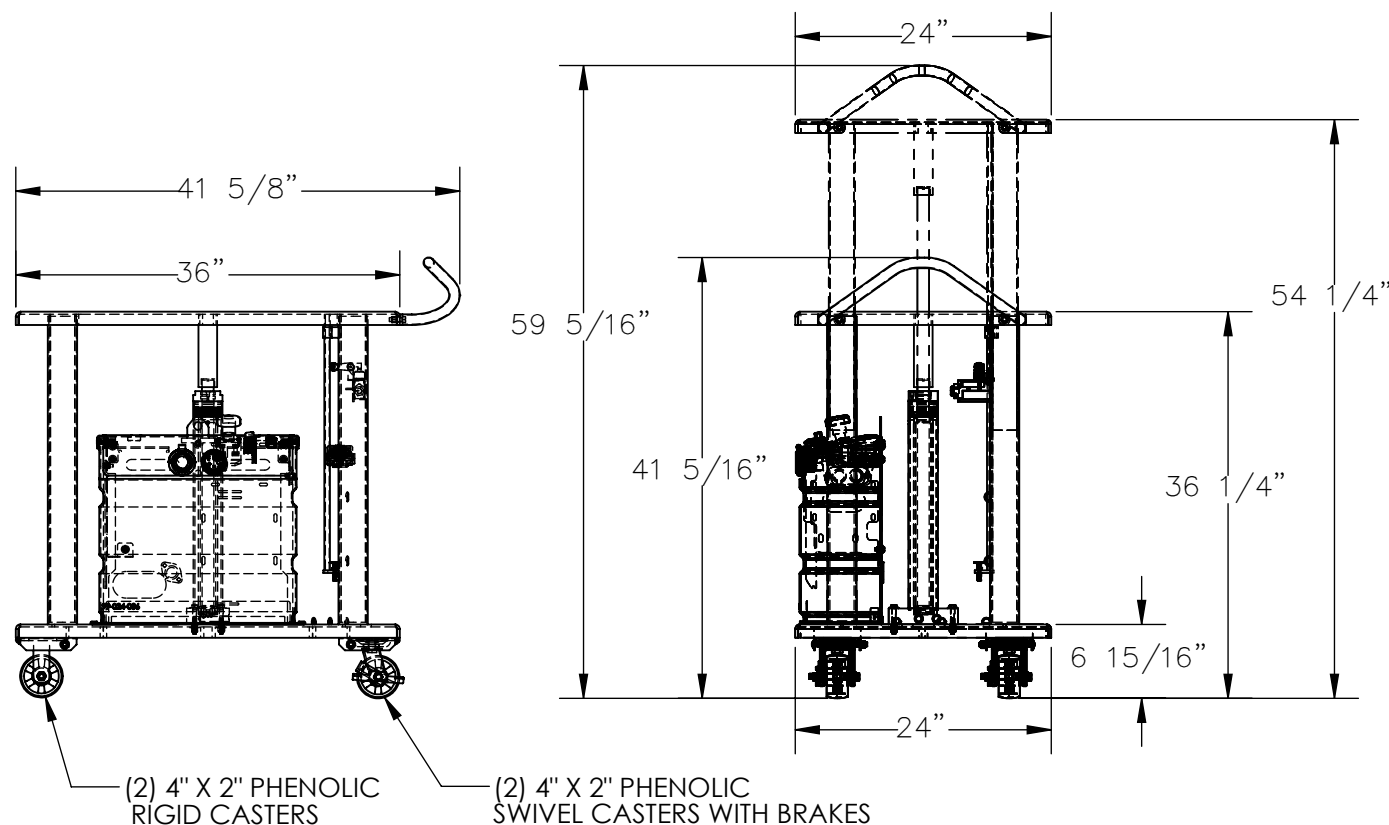


# HYDRAULIC POST TABLE - HT-20-2436-DC

APPROX WEIGHT: 292.87 lbs.  
DOES NOT INCLUDE WEIGHT OF POWER OR PACKAGING!!!

\*\*\* ANY ADDITIONS, DELETIONS, OR OMISSIONS MUST BE CORRECTED ON THIS DRAWING AS THIS DRAWING WILL BE CONSIDERED ALL INCLUSIVE \*\*\*

ALL GRAPHICS PROVIDED ARE FOR REFERENCE ONLY. IF CERTAIN DIMENSIONS ARE CRITICAL PLEASE VERIFY THOSE DIMENSIONS WITH YOUR SALESPERSON



DIMENSION TOLERANCE  $\pm 1/4"$

## STANDARD FEATURES

MODEL NUMBER IS HT-20-2436-DC

MAX CAPACITY IS 2,000 LBS.

OVERALL WIDTH: 24"

USABLE WIDTH: 24"

OVERALL LENGTH: 41 5/8"

USABLE LENGTH: 36"

RAISED HEIGHT: 54 1/4"

LOWERED HEIGHT: 36 1/4"

OVERALL RAISED HEIGHT: 59 5/16"

OVERALL LOWERED HEIGHT: 41 5/16"

(2) PHENOLIC RIGID CASTERS

(2) PHENOLIC SWIVEL CASTERS WITH BRAKES

HYDRAULIC HOSES NOT SHOWN

TOUGH BAKED IN POWDER COATED BLUE FINISH

## SPECIAL FEATURES

NONE

APPROVAL

I, THE UNDERSIGNED, AGREE THAT THE PRODUCT AS REPRESENTED SATISFIES DESIGN AND DIMENSION REQUIREMENTS. I ALSO ACKNOWLEDGE MY DUTY TO CONFIRM PRODUCT AND INSTALLATION COMPLIANCE WITH ALL APPLICABLE FEDERAL, STATE AND LOCAL REGULATIONS AND STANDARDS.

**ANY MODIFIED UNITS ARE NON-RETURNABLE**

[ ] As drawn [ ] As marked

Signed: \_\_\_\_\_ Date: \_\_\_\_\_

Printed Name: \_\_\_\_\_

LEAD TIME WILL START UPON RECEIPT OF SIGNED APPROVAL DRAWING

FOR INTERNAL USE ONLY  
PROJECT SIGN OFF

|       |  |
|-------|--|
| SALES |  |
| ENG.  |  |
| FAB.  |  |
| POWER |  |

DISTRIBUTOR'S NAME:

VESTIL MANUFACTURING

DRAWN BY: CRH

DATE: 3/11/2020

REFERENCE: X

SCALE: 1:18

QUOTED LEAD TIME: X

QUOTE # X

P.O.# X

W.O.# X

SALES: X

FILE NAME:

21-007-049