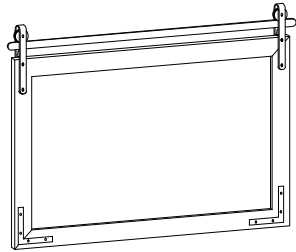
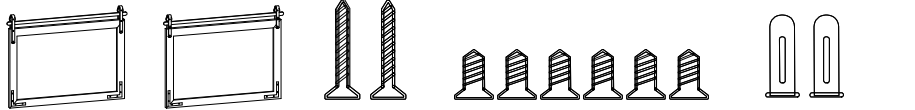


Wall Mirror Installation Manual



Package Contains

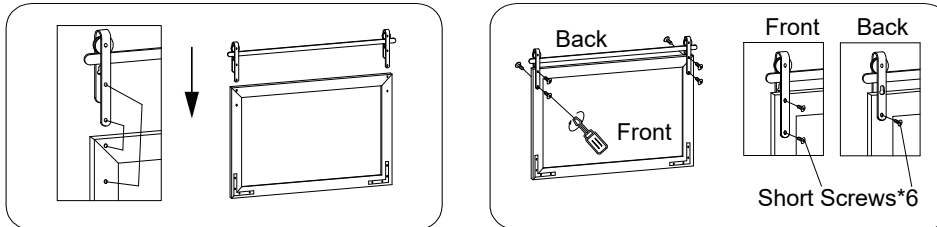


Front Back Long Screws*2 Short Screws*6 Expansion Tube*2
 There are two spare screws and expansion tubes respectively!

Prepare Tools:

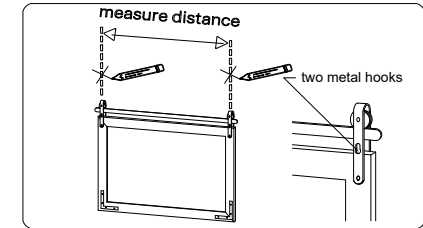
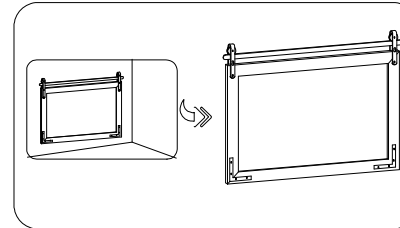


① Install the iron frame onto the wooden frame



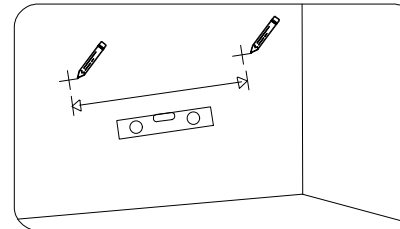
Align the side of the iron frame featuring two holes with the side of the wooden frame that also has two holes and insert the iron frame to ensure the holes line up, then use a screwdriver to insert 6 short screws(2 on each side of the front, and one on each side of the back).

② Measurement



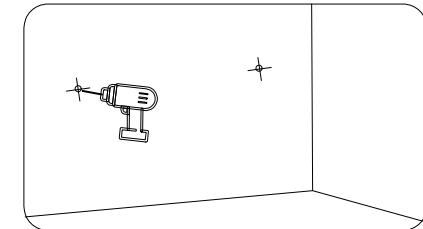
Use a tapeline to measure the distance between two metal hooks accurately.

③ Mark the Position



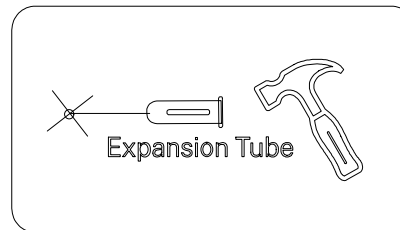
Using a pencil and a spirit level, mark the two mounting points for the mirror on the wall.

④ Drill Holes



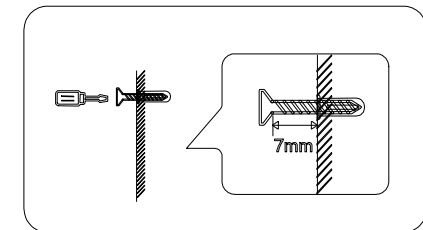
Drill holes at the two marked points with a hammer drill.

⑤ Fixing Expansion Tube



Use a hammer to drive the expansion tube into the holes.

⑥ Fixing Screws



Use a screwdriver to rotate the screws into the expansion tube.

⑦ Align with the Holes and Install the Mirror

