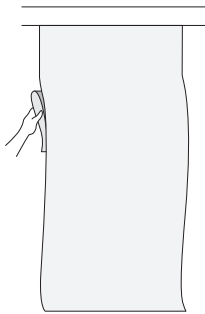


---

## PEEL & STICK FABRIC WALLPAPER INSTALLATION

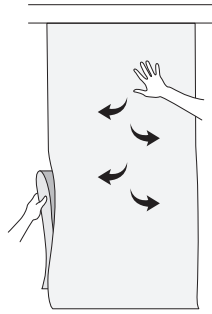
---

- \* Our Peel and Stick Removable Wallpaper should be installed on finished surfaces ONLY. Walls must be primed or painted. Unfinished surfaces such as bare drywall or concrete are not recommended.
- \* Wash & dry your hands completely before applying the wallpaper. (Hands must be completely dry)
- \* Do not use a squeegee or anything other than your hands to apply the wallpaper.



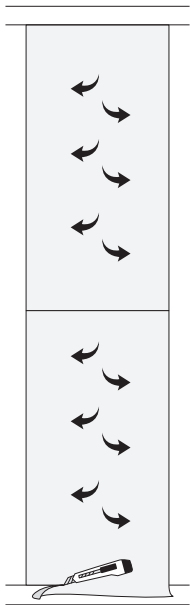
### Step 1.

Remove about 12 inches of the backing from the first piece of wallpaper. Apply from the top of the wall or desired area first.



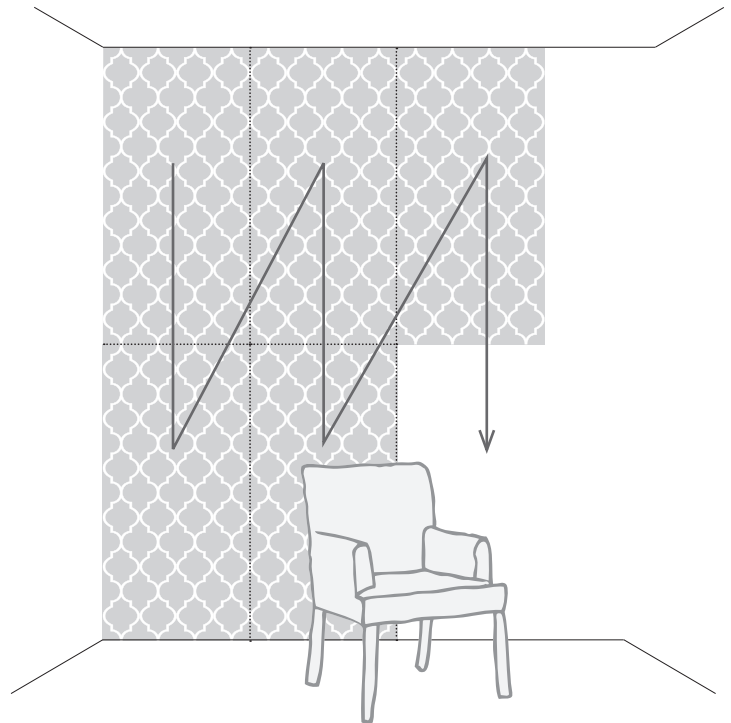
### Step 2.

Using your hands, smooth the section of wallpaper from top down and from center outwards (see diagram) Remove the remaining backing as you go down. Use your hands to remove any trapped air bubbles before applying the next piece.



### Step 3.

Begin applying the next piece by butting the edges together and in the order shown on the diagram to the right. Trim any excess wallpaper as needed once all pieces have been applied.



### Store and Reuse

Be sure to save the backing paper for later on, when you want to remove the wallpaper. This will allow you to store and reuse it at a later time!