

design TOSCANO®

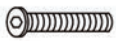
INSTRUCTIONS FOR PRODUCT

NE-170009
The Giant Columns of Luxor

Thank you for your recent purchase of this Design Toscano hand-crafted piece of wall art. We have taken great care to create this piece especially for you. Please review these instructions and assemble this piece with care. Do not over tighten any screw or bolt connection.

Parts

A (4 PCS)



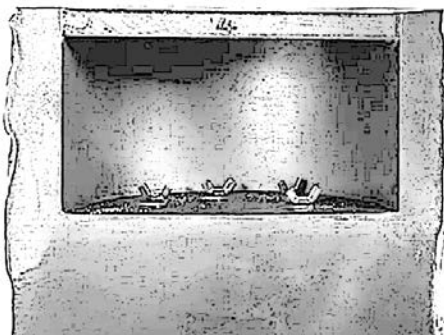
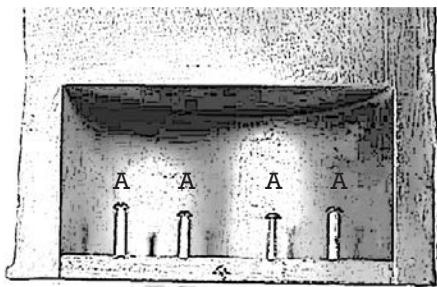
B (4 PCS)



C (4 PCS)

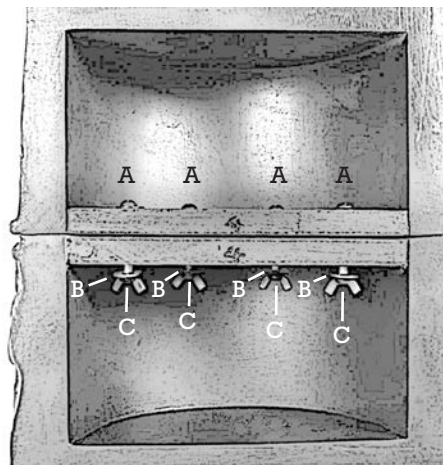


D (1 PC)



Step 1

Insert bolts (A) into the back of the top half of the column and align with the bottom half of the column.

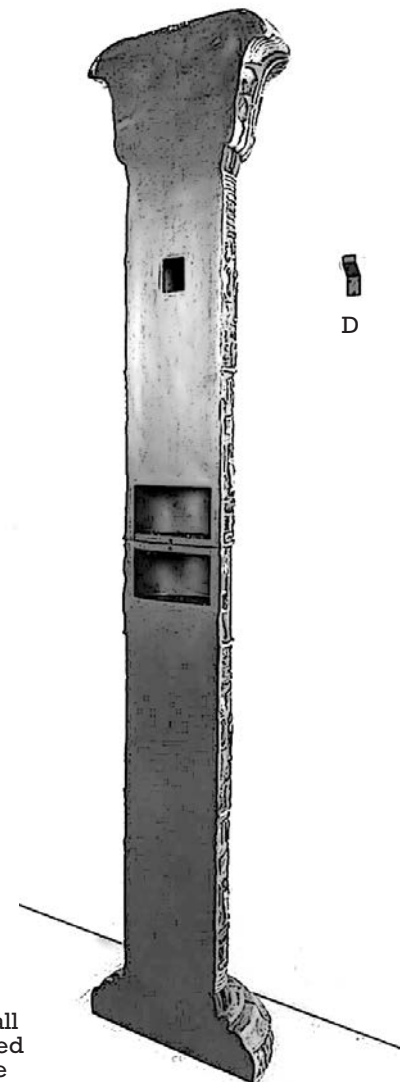


Step 2

Fasten top and bottom halves of the column together with the washers (B) and wingnuts (C).

Step 3

Mount bracket (D) on wall after you have determined where you would like the column to be located. Lift column on to bracket.



©Copyright 2018, Design Toscano, Inc.

1.800.525.0733
DESIGNTOSCANO.COM

THANK YOU FOR
YOUR PURCHASE