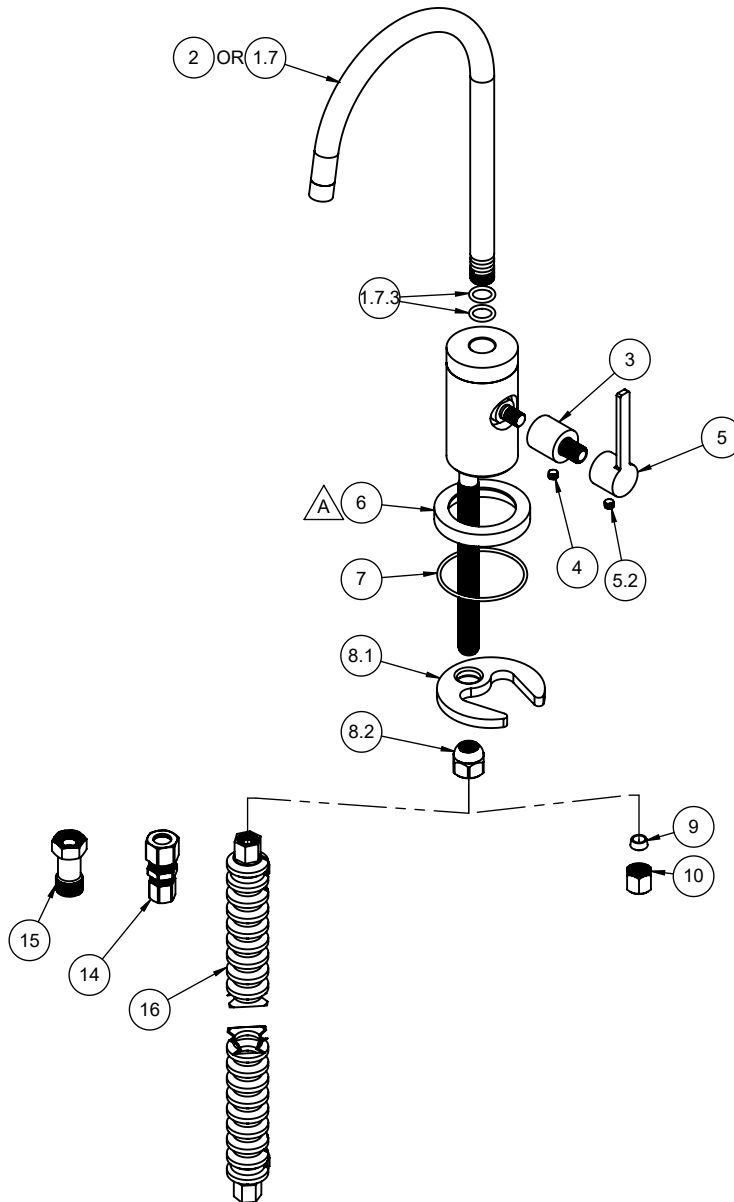


△ REQUIRES ITEM 7



To order spare parts add and/or replace as stated below:

**SPD-** prefix added to part number(s)  
**-ZZ** replaced with finish code (see finish table)  
**-WW** replaced with **-90** (light finish) or **-96** (dark finish)

Ex: **SPD-7-100463-PC** or **SPD-86030-96**

	ITEM	PART NO.	DESCRIPTION	QTY
for 9620 Series	1.7	5-100122-ZZ	ASM, CONT/TRANS WATER DISP SPOUT <i>(incl. 1.7.3)</i>	1
	1.7.3	87170-80	O-RING Ø10.00 X 2.00 (NA) EPDM A70 (NSF-61-12 & WRAS)	2
for 9625 Series	2	5-100299-ZZ	ASM, CONT SPOUT HOT/COLD ONLY DISP - G2 <i>(incl. 1.7.3)</i>	1
	3	51184-ZZ	POST, INDUS WATER DISP - G2	1
	4	86047-WW	SETScrew 10-24 X 3/16 SCKT HD CONE PT SS	1
	5	5-100292-ZZ	ASM, WATER DISP TNG HDL <i>(incl. 5.2)</i>	1
	5.2	86047-90	SETScrew 10-24 X 3/16 SCKT HD CONE PT SS	1
	6	50600-ZZ	RING, CONT WATER DISP BASE	1
	7	87093-80	O-RING Ø44.17 X 1.78 (-031) BUNA-N A70	1
	8	6-200246	KIT, KITCHEN/H2O DISP MNT HDW <i>(incl. 8.1, 8.2)</i>	1
	8.1	880309-98	MOUNTING BRACKET, SINGLE HOLE CRESCENT	1
	8.2	10552-98	NUT, HEX W/ DOME 7/16-24	1
for 9620 Series	9	962586-99	1/4" CMP SLEEVE - PLASTIC	1
for 9620 Series	10	962587-99	COMP NUT, 1/4" (THD 7/16-24)	1
for 9625 Series	14	880331-98	FITTING, 3/8" CMP X 1/4" CMP STRAIGHT (NSF-61)	1
for 9625 Series	15	6-200281.05	ASM, 3/8" COMP (9/16"-24 MALE X FEMALE) FLOW RESTICTOR - 0.5 GPM	1
for 9625 Series	16	6-200307	HOSE, HOT WATER, CORRUGATED	1
for ITEM 4, & 5.2	17	882043-99	KEY, ALLEN, 3/32", BLACK	1