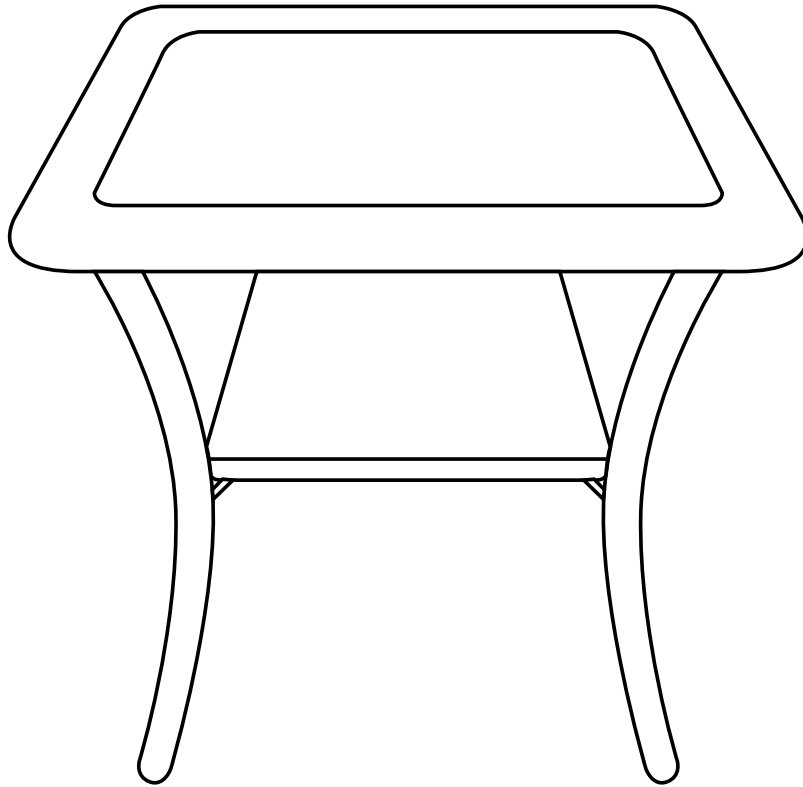


# Assembly Instructions



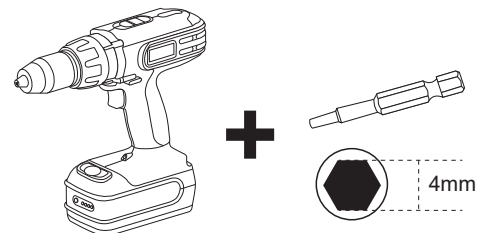
For any missing hardware, damaged parts and other problems.  
WELCOME to email us at: [service@behousewell.com](mailto:service@behousewell.com)





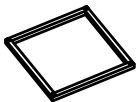

Or call at (1)833-474-1928 Toll free  
Between 9AM and 5PM Eastern time, Monday through Friday

**\*Don't fully tighten all the bolts till the very end!**

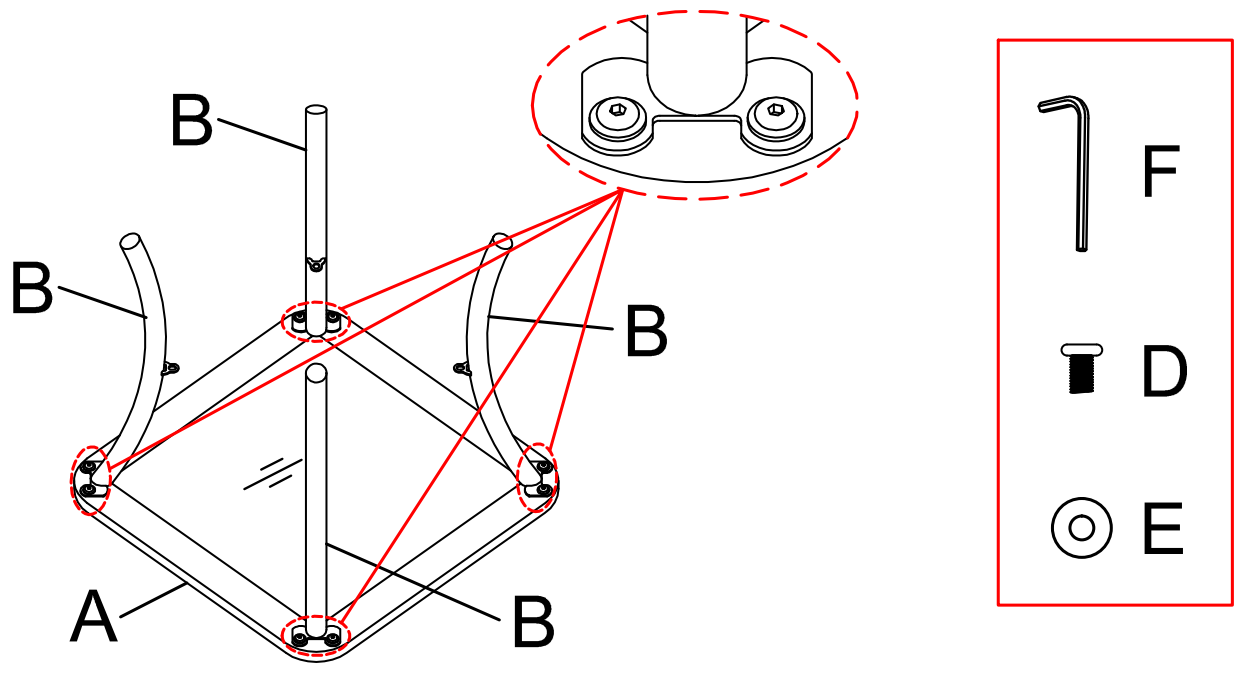
PRE-ASSEMBLY PREPARATION:

- A cordless drill is recommended for ease of assembly.
- Clear out the space for assembly and lay out all of the parts based on the Parts List, extra room will allow you to easily determine if all the pieces are present.
- Keep small parts and pieces away from children until fully assembled.



Part no.	Part	QTY	Image	Part no.	Part	QTY	Image
A	Table top	1		D	Bolt M6*12mm	12	
B	leg	4		E	Washer	12	
C	Tray	1		F	Allen wrench	1	

**Step 1:** Attach 4pcs leg B to table top A with 8pcs bolts D and 8pcs washers E, using Allen wrench F. Note: Don't fully tighten the bolts.



**Step 2:** Attach the tray C to legs B with 4pcs bolts D and 4pcs washers E, using Allen wrench F. Turn over the assembled table. Verify the alignment and adjust, now fully tighten all the bolts.

