

TV STAND

MODEL

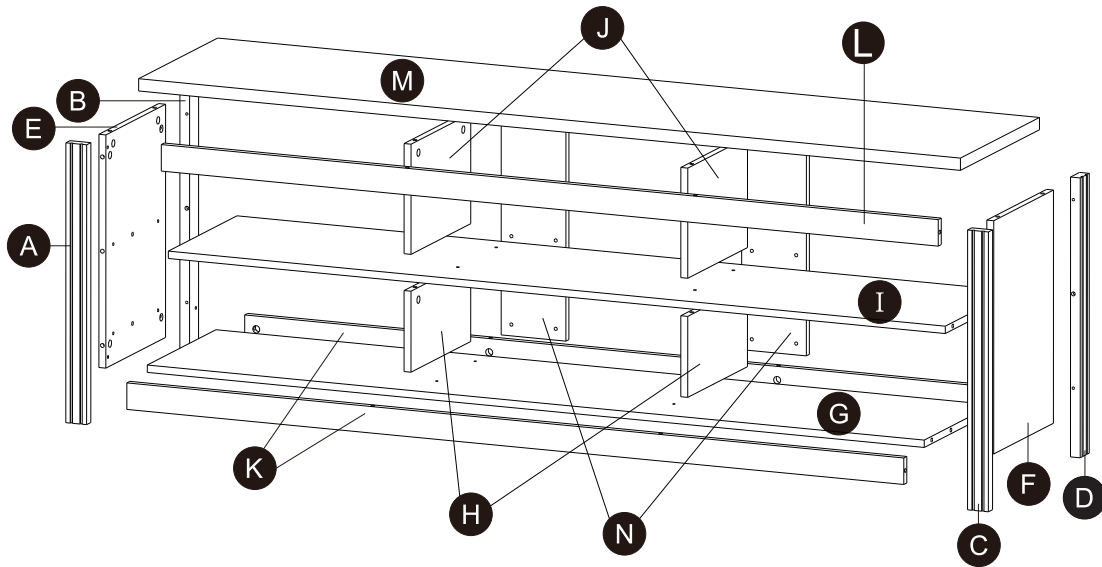
BTS211801WB



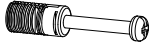
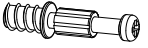
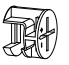


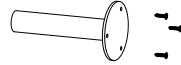

BTS211803WW

BTS211804WE

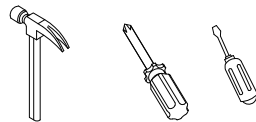
IMPORTANT : please read this manual carefully before beginning assembly of this product. keep this manual for future reference.

WHAT'S IN THE BOX



<p>Ⓘ x 16</p>  <p>JCBCW SCREW M6X45</p>	<p>Ⓜ x 1</p>  <p>M4 ALLEN KEY</p>	<p>Ⓢ x 36</p>  <p>CAM BOLT</p>
<p>Ⓥ x 8</p>  <p>CAM BOLT(SMALL)</p>	<p>Ⓟ x 44</p>  <p>CAM LOCK</p>	<p>Ⓟ x 6</p>  <p>PVC NAIL WITH PIN</p>
<p>Ⓡ x 8</p>  <p>M8x30 WOOD DOWEL</p>	<p>Ⓢ x 2</p>  <p>PLASTIC LEG & SCREW M3.5x16</p>	<p>Ⓧ x 16</p>  <p>STICKER</p>

Tools Required (Not included)



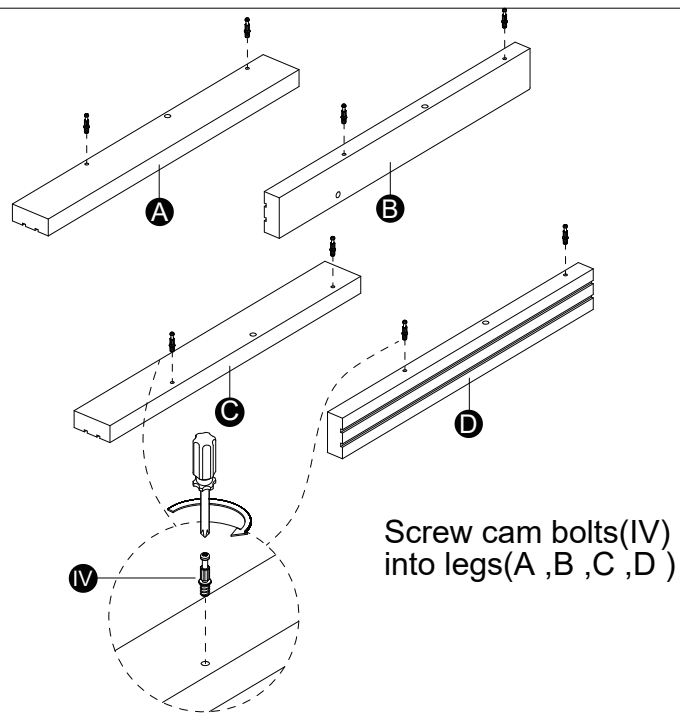
★ Thank you for choosing our products please read the instructions carefully before installation, and please keep the instructions properly

Tips and tricks

1. Do not attempt to move this furniture without first removing all equipment
2. Death or serious injury may occur when children climb on audio and/or video equipment furniture. A remote control or toys placed on the furnishing may encourage a child to climb on the furnishing and as a result the furnishing may tip over onto the child.
3. Please contact us using the details shown for further advice

⚠ **WARNING** If any parts are missing or damaged, do not return the damaged item to your dealer; contact Customer Service. Never use damaged parts!

1

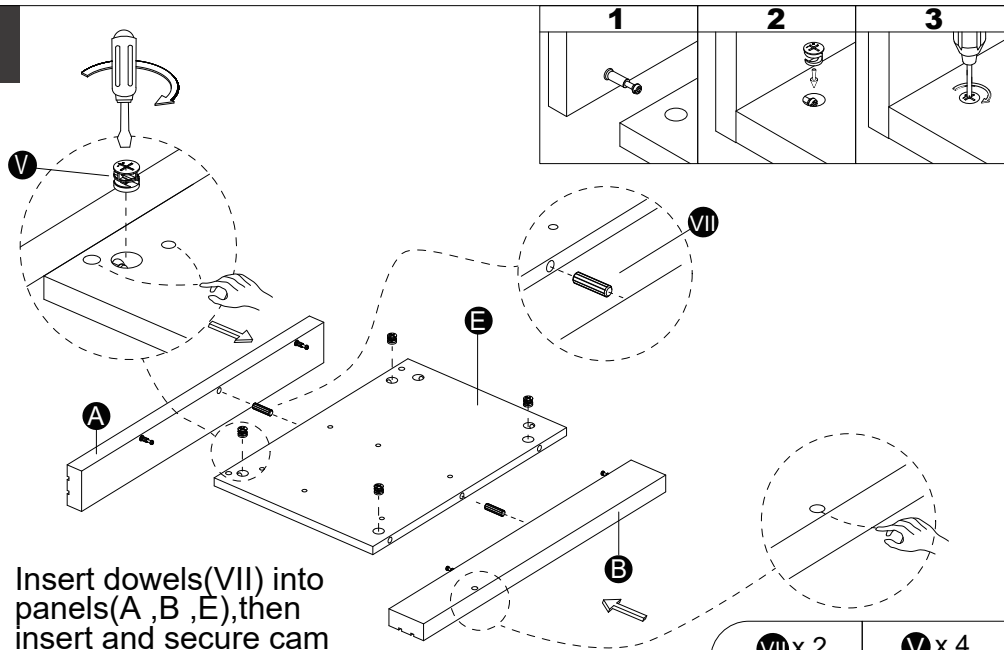


Screw cam bolts(IV)
into legs(A ,B ,C ,D)

IV x 8



2



Insert dowels(VII) into
panels(A ,B ,E),then
insert and secure cam
lock(V)to side
panel (E)to lock it.

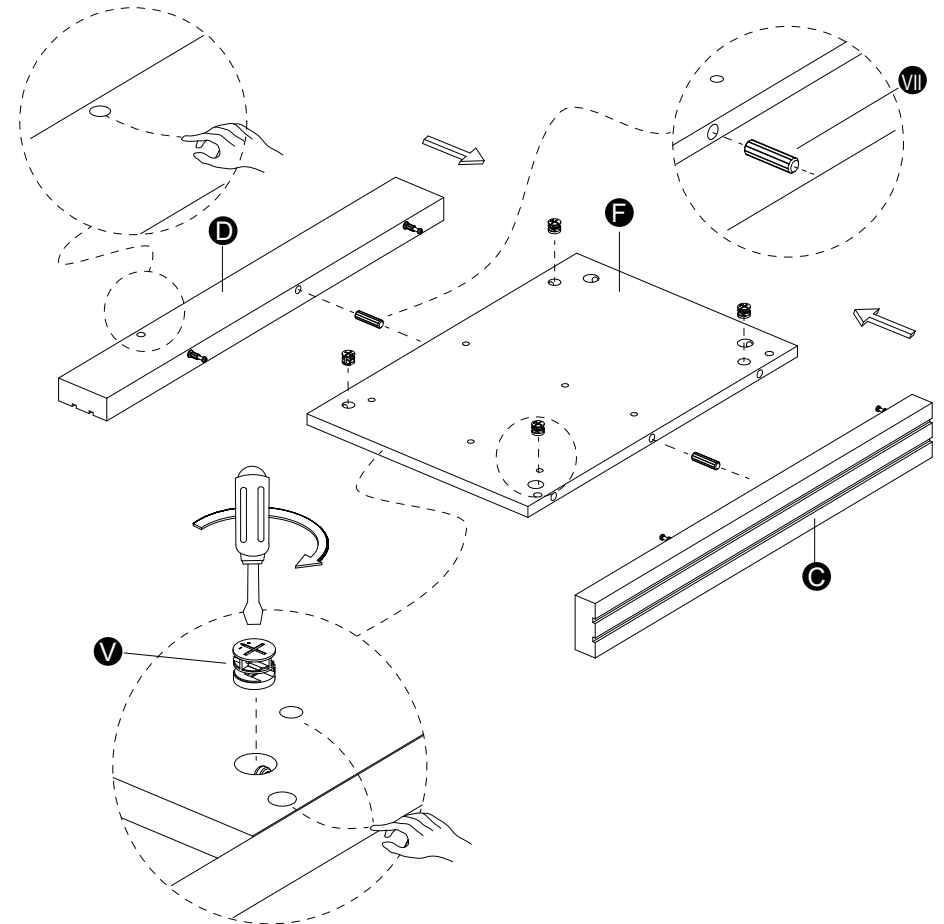
VII x 2



V x 4



3



Insert dowels(VII) into panels(C ,D ,F).
then insert and secure cam lock(V)
to side panel (F)to lock it.

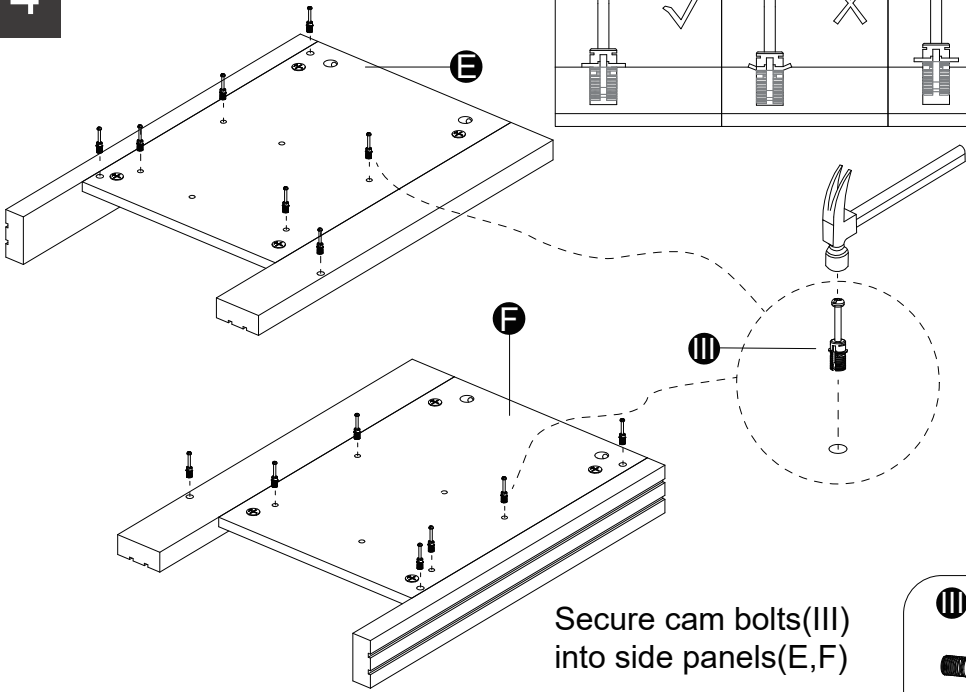
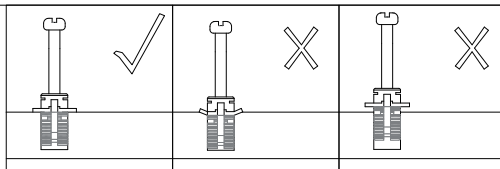
VII x 2



V x 4



4

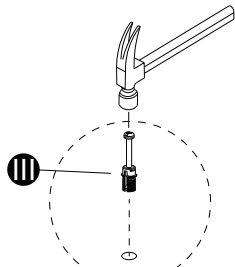


Secure cam bolts(III)
into side panels(E,F)

III x14



5



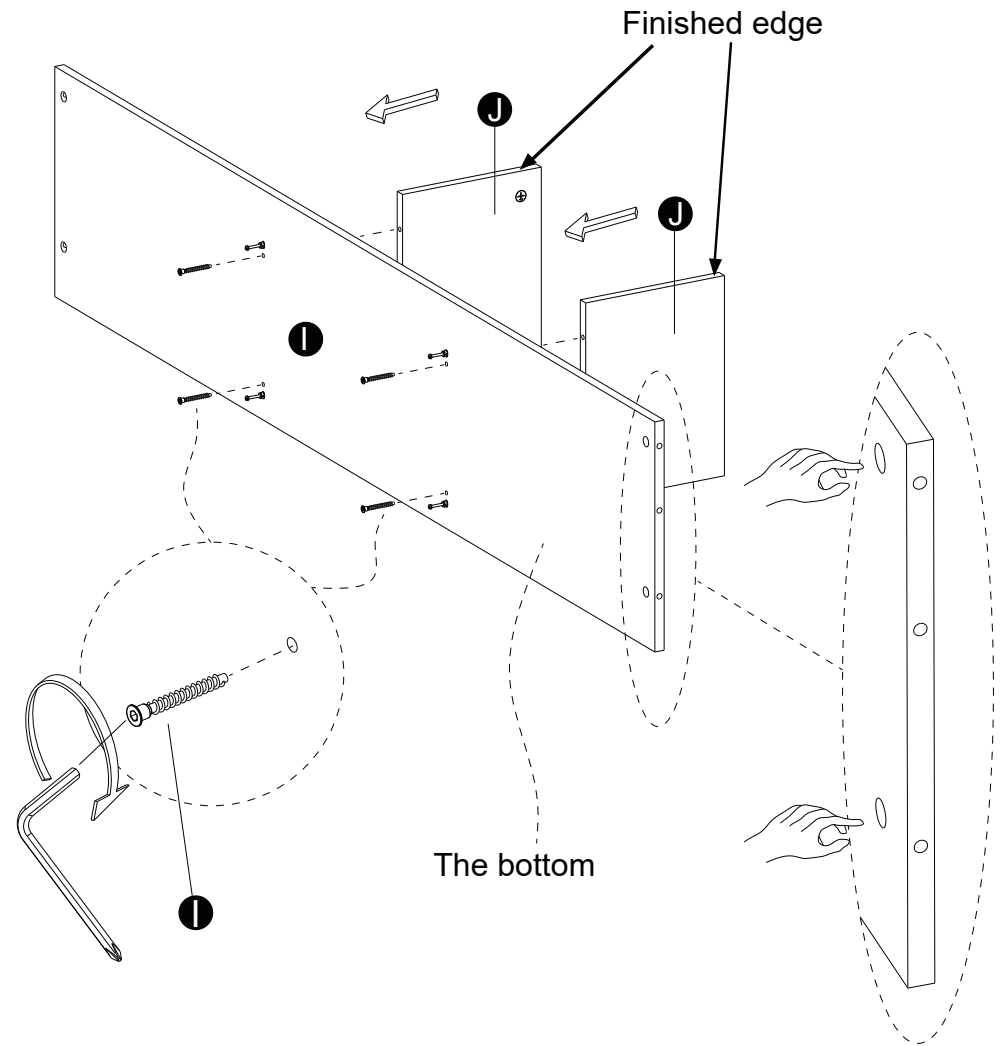
Secure cam bolts(III) into panel (I)

The bottom

III x 4



6



Finished edge

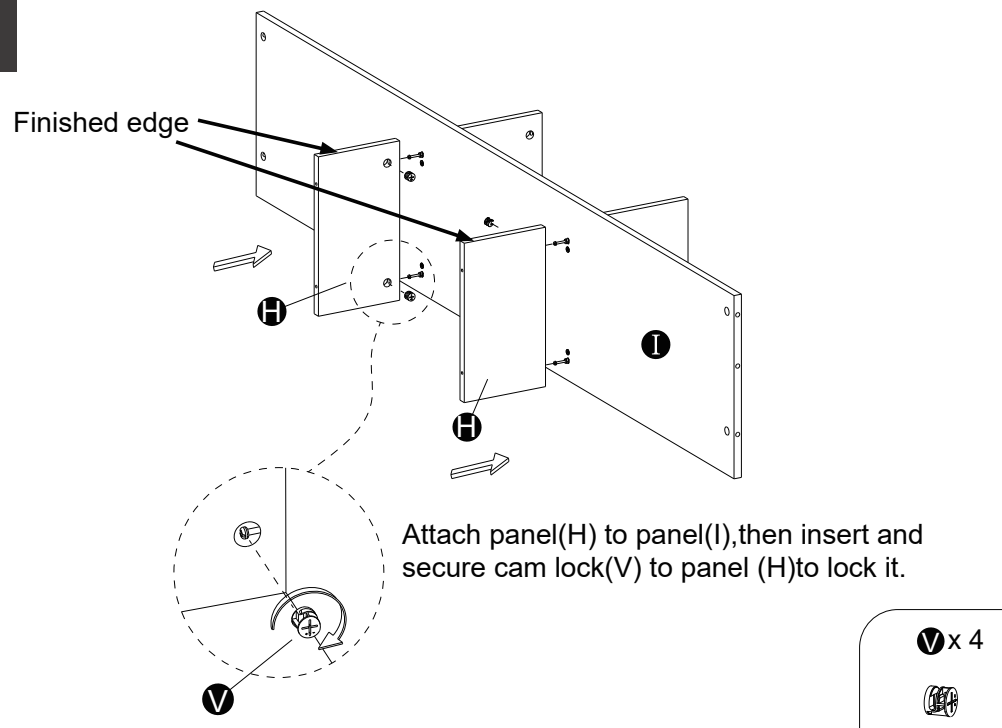
The bottom

Attach panel(J) to panel(I) using screws(I)

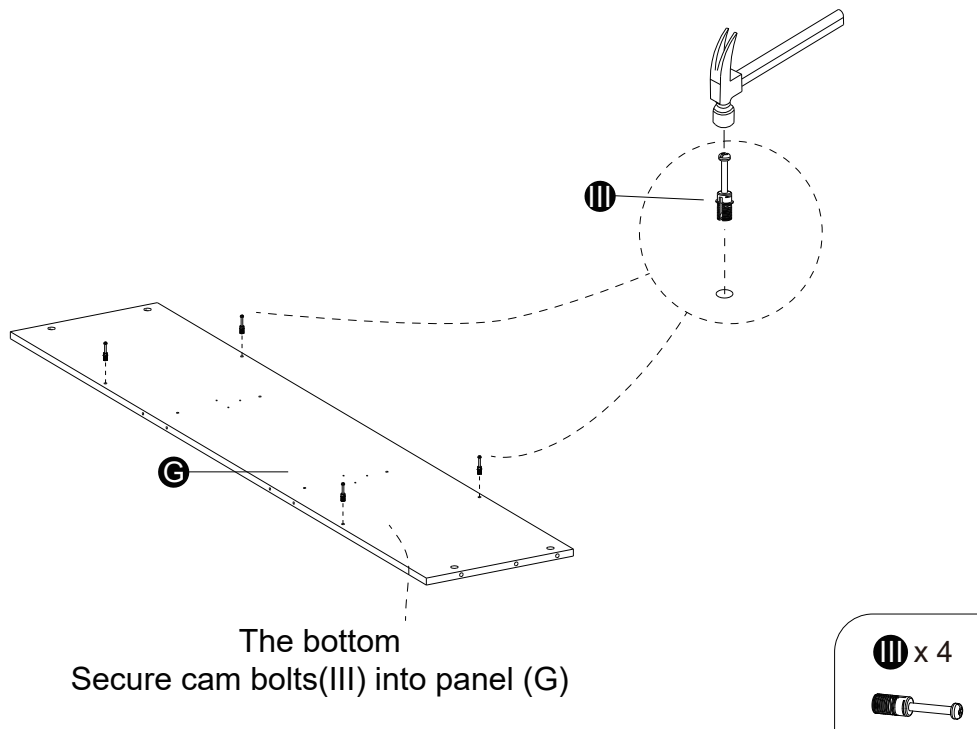
I x 4



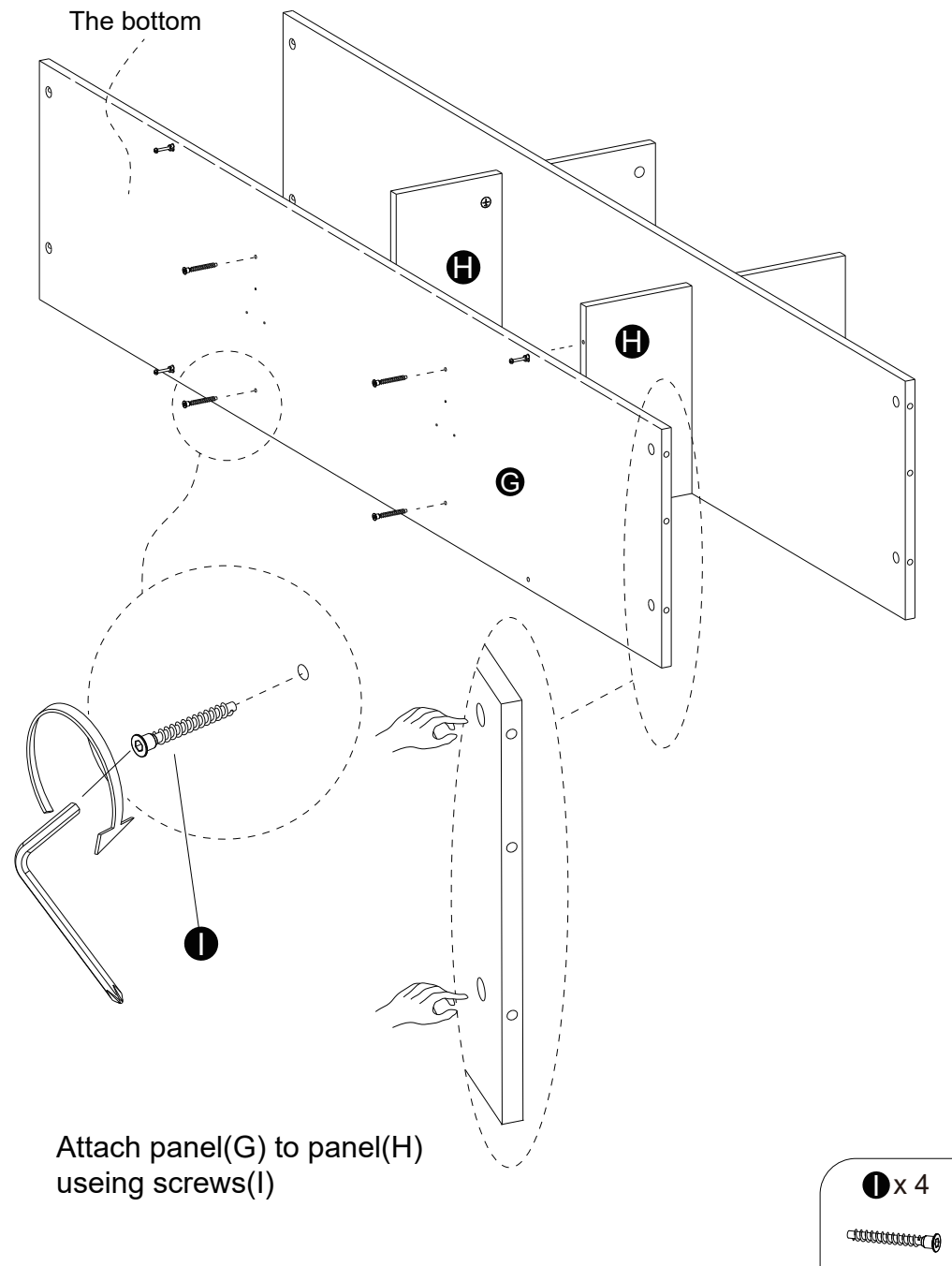
7



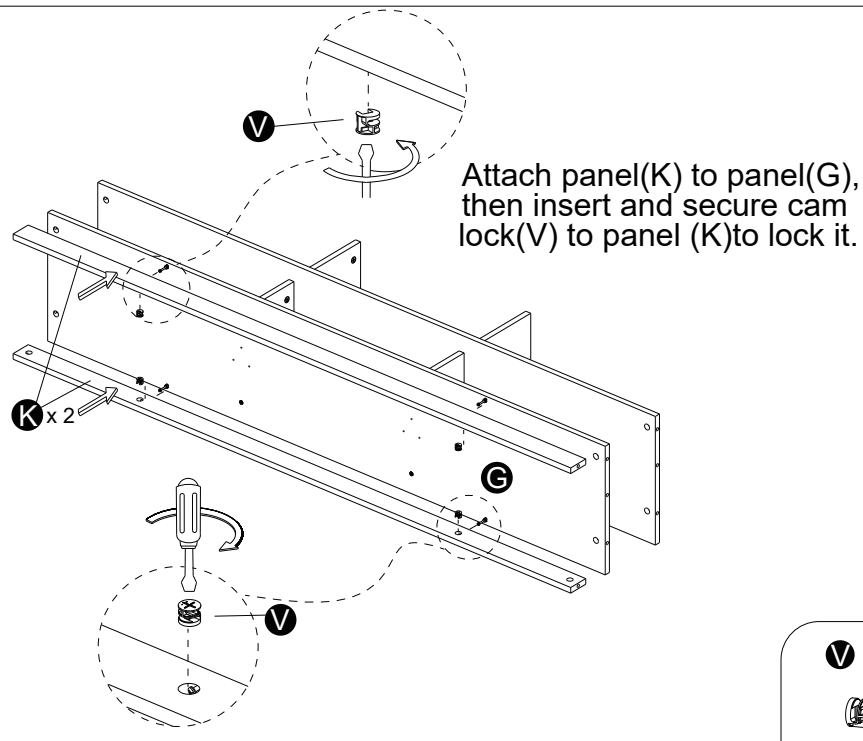
8



9

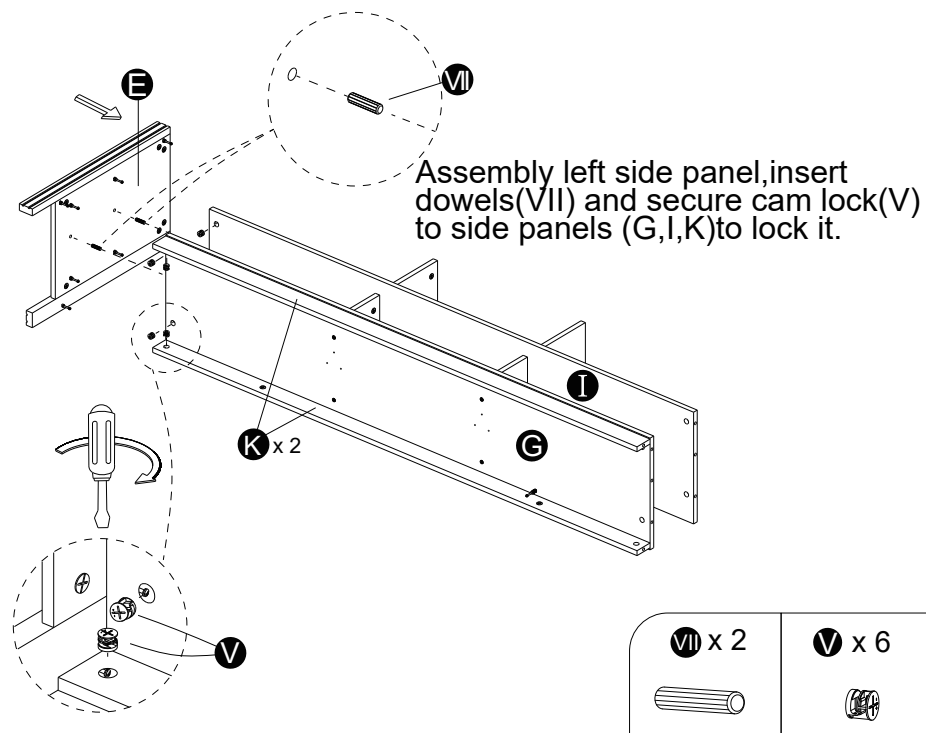


10



V x 4

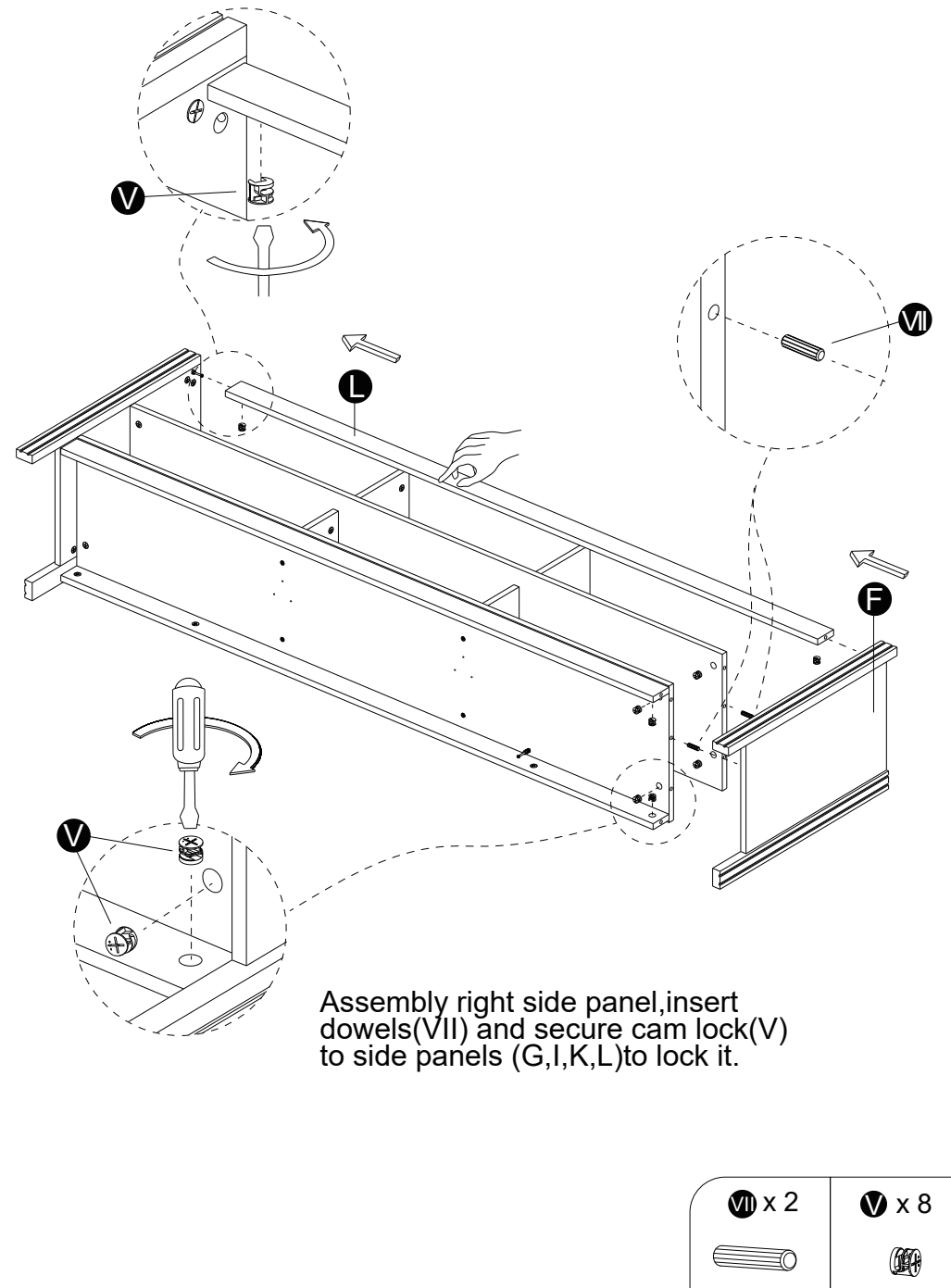
11



VII x 2

V x 6

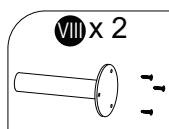
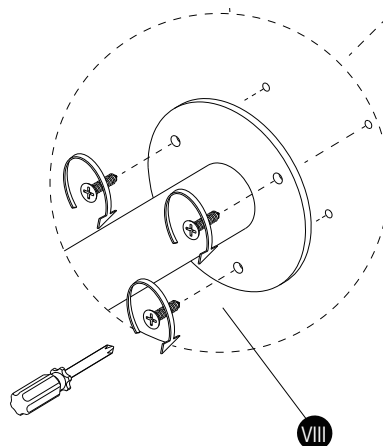
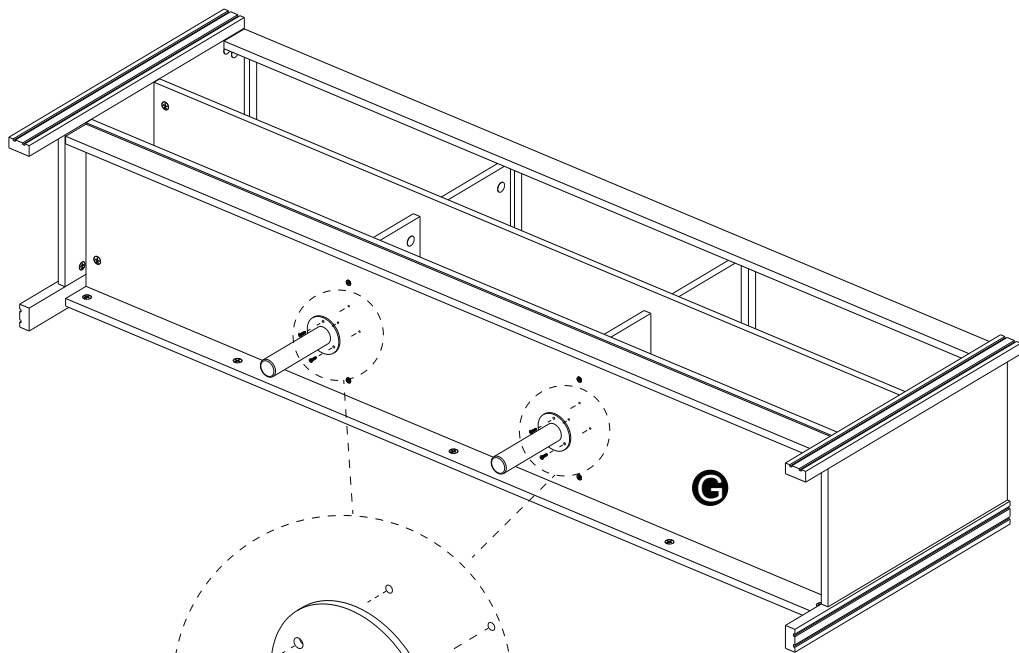
12



VII x 2

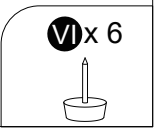
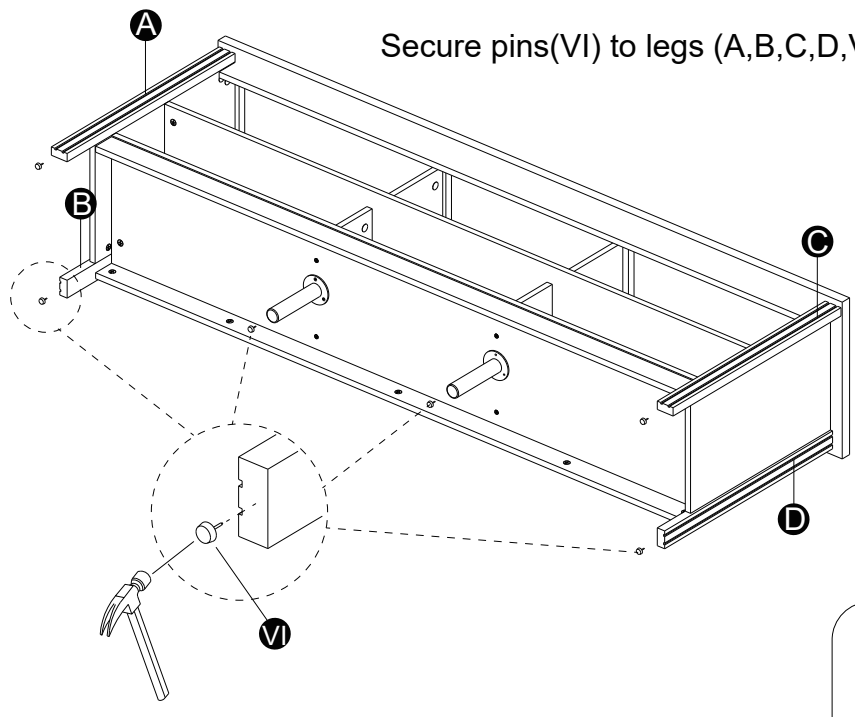
V x 8

13



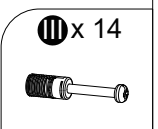
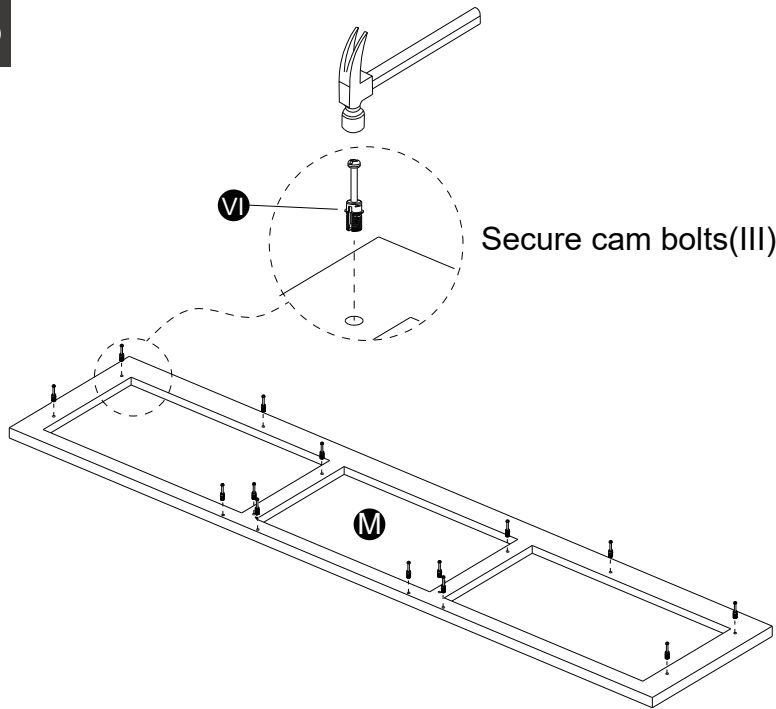
14

Secure pins(VI) to legs (A,B,C,D,VIII)

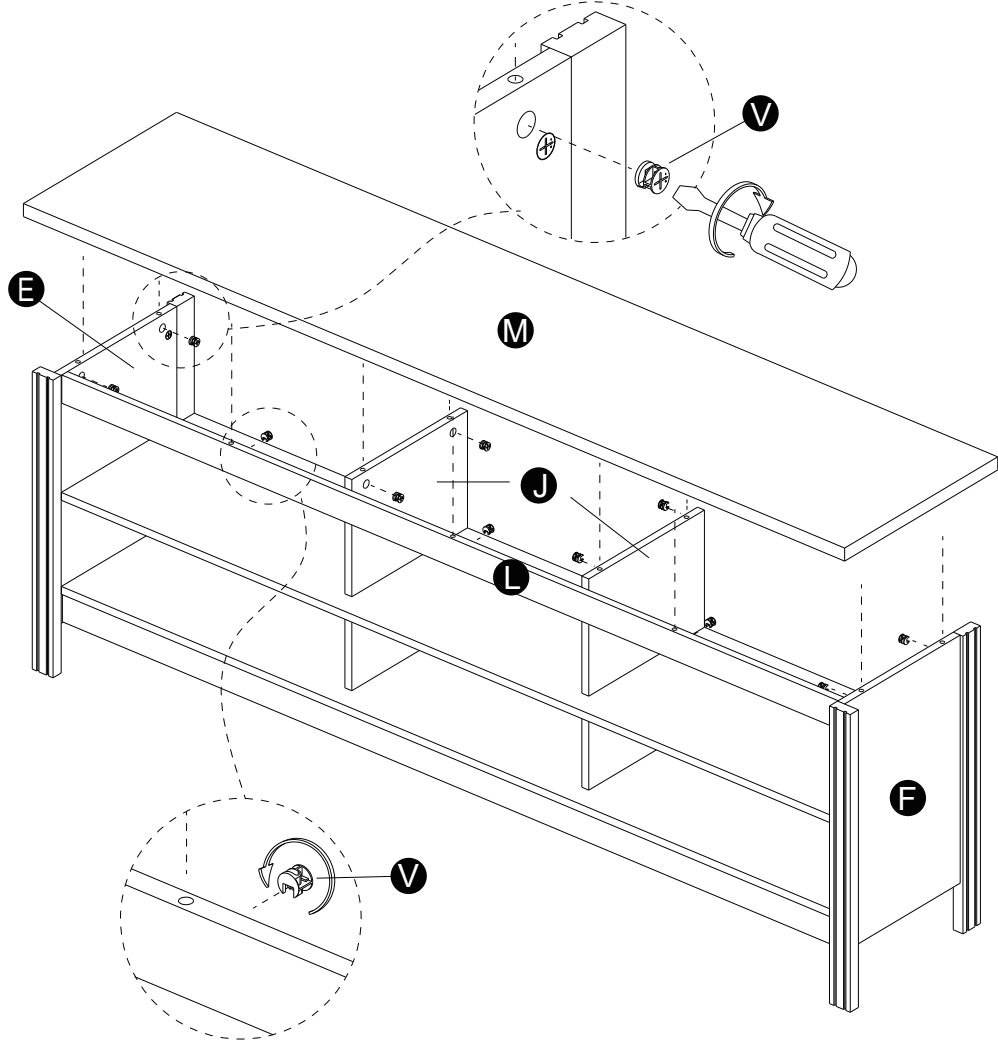


15

Secure cam bolts(III)into panel(M)



16

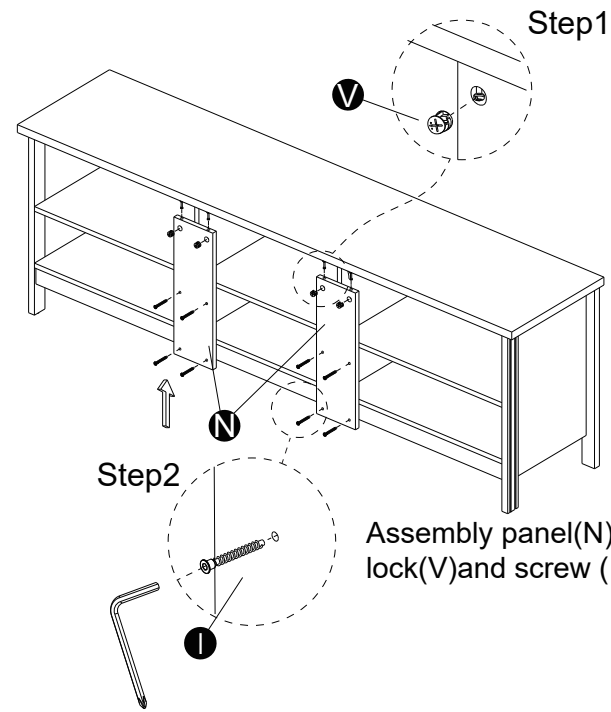


Assembly panel(M),insert and secure cam lock(V) to panels(E,F,J,L) to lock it

V x 10



17



Assembly panel(N),insert and secure cam lock(V)and screw (I) to side panel (N).

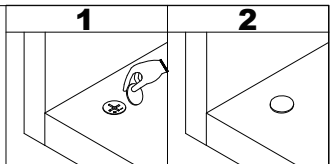
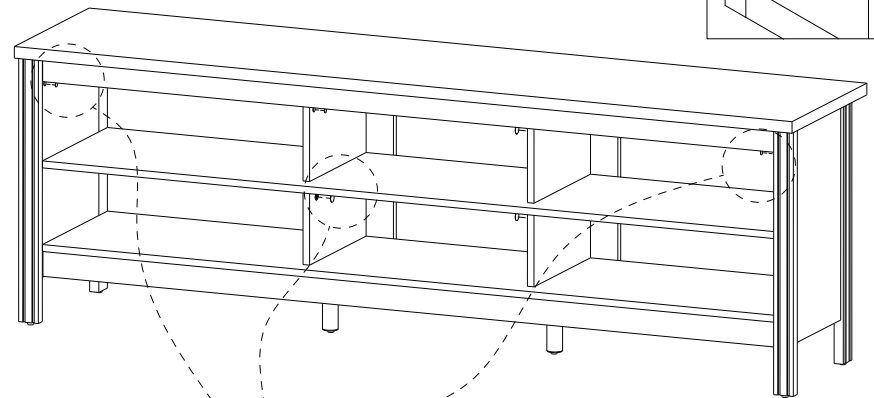
I x 8

V x 4



18

Final Assembly.Stick sticker(IX)on cam lock(V)



IX x 16

