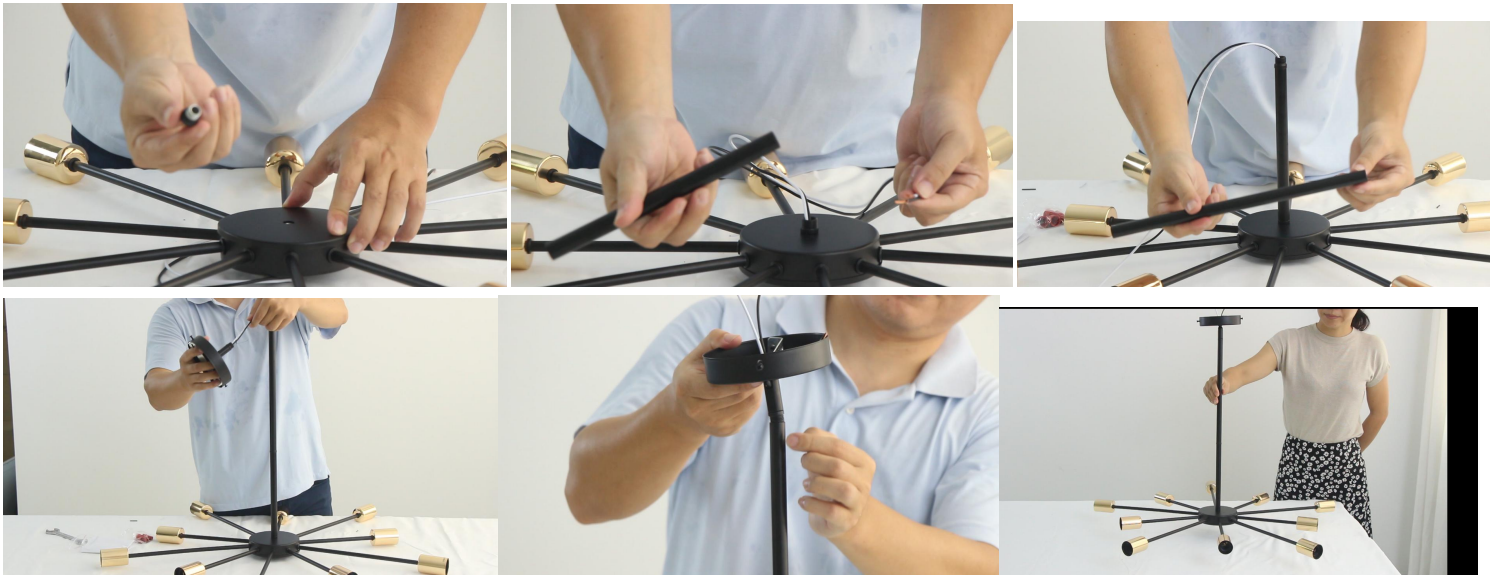


Step 1A: Unscrew Spherical nut (black ball one). 1B: Arrange the light arm in order by one longer with one short and install them into the center column holes and lock with nuts. 1C: Group the white lamp wire and black wire together.



Step 2: Pass the prepared set of black and white wires through the holes in the center column and connect wire (white / white, black/ black) by connector



Step 3: Close the plate cover and screw Spherical nut.

Step 4: Assemble Rods which is easy to screw on toothed joint. There are 2 kinds of rod, 1 pc 20cm and 1 pc 30cm, which can be install together by metal joint

Step 5: Connect the rod to the canopy. (There is one swivel joint on the canopy which make this chandelier suitable to the slop ceiling.

Step 6: Install the whole light to your ceiling wire box

Step 7 : Install Bulbs (not included), recommend E26 A60 (ST64) LED bulb or Edsion bulbs. The lamp can be dimming if you adopt dimmable bulb.