

MODERN EMBER

Lakeport Installation Instructions

Follow these easy steps and you will be ready to enjoy your new Mantel. You will need the following tools and materials to install your mantel:

Bubble Level / Tape Measure / Drill / Pencil / Wall Anchors

Step 1: Assemble Your Fireplace Mantel

Locate an area large enough to assemble your Fireplace Mantel. We recommend a floor section that has a soft surface. Place the shelf with the top side down on the floor. One at a time, line up the holes on the legs with the holes on the shelf. Using the assembly hardware and factory installed nuts on the shelf, bolt each leg to the shelf plate. Make sure legs are straight, and then tighten bolts to secure the legs. Leave on the floor until measuring is completed.

Step 2: Determine Location and Measure

With the Fireplace Mantel upside-down on a soft surface, hold the French cleat mounting board in position on the shelf. Measure from the top of the shelf to the bottom of the mounting board - make note of this measurement, as you will use it in one moment.

Place the Fireplace Mantel against the fireplace in the desired location. Draw a line on the wall along the top of the Fireplace Mantel Shelf. Remove the Fireplace Mantel from the wall. Using your mounting board measurement, measure and mark the reference point for the bottom of the mounting board. Mark the line at several points to ensure a level mount.

Locate and mark the location of the center of 3 studs (2x4 boards) inside the wall you intend to install your mantel.

Step 3: Attach the French Cleat Mounting Board to the Wall

Place the included French cleat mounting board on the wall and line up the bottom of the mounting board with the lower line. Attach the mounting board to the wall with appropriate fasteners for your application (see Drawing B).

If you are mounting on a standard drywall over stud construction, make sure you screw the mounting board into the wood studs for strength. When attaching the shelf to a brick surface, you must use a masonry lag bolt.

Step 4: Mounting the Fireplace Mantel and Installing Scribe Molding

Lift and place the Fireplace Mantel over the mounting board and slide down until the shelf is against the wall. Push the mantel tight against the wall and then push down firmly on the shelf to ensure the French cleat mounting board is properly connected. Place the included scribe molding on the inside edge of the mantel. Mark and cut the scribe molding if necessary. Attach the scribe molding using the supplied small nails.

Note: The edge of the mantel against the wall may not be tight across the whole length of the shelf. The wall may not be uniform and flat. If not, use caulk to fill the gap.

Don't forget to tag us! We would love to see your new mantel.






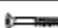

#mantelsdirect #modernember



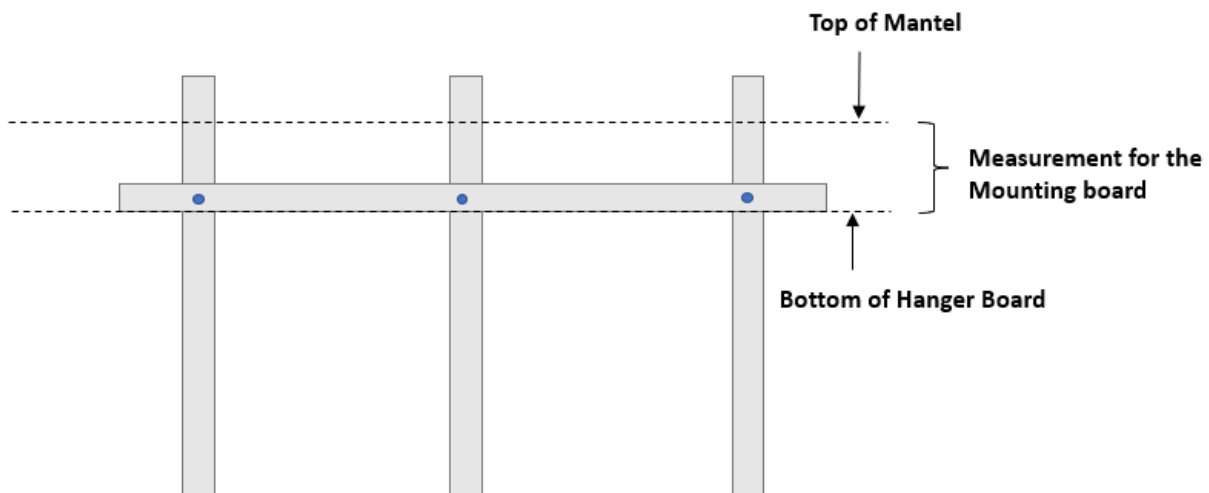
MODERN EMBER

Step 5: Enjoy Your New Fireplace Mantel!

HARDWARE PACK

| NO | Drawing | Description | Q'TY |
|----|---|------------------------------|------|
| A |  | Bolt (Ø1/4"x2-1/2") | 4PCS |
| B |  | Lock Washer (Ø1/4") | 4PCS |
| C |  | Flat Washer (Ø1/4"*16*1,5mm) | 4PCS |
| D |  | Allen Wrench (100*50*4mm) | 1PC |
| E |  | Screw (#8*40mm) | 4PCS |
| F |  | Screw (#10*80mm) | 4PCS |
| G |  | Screw (#8*32mm) | 2PCS |

Drawing A

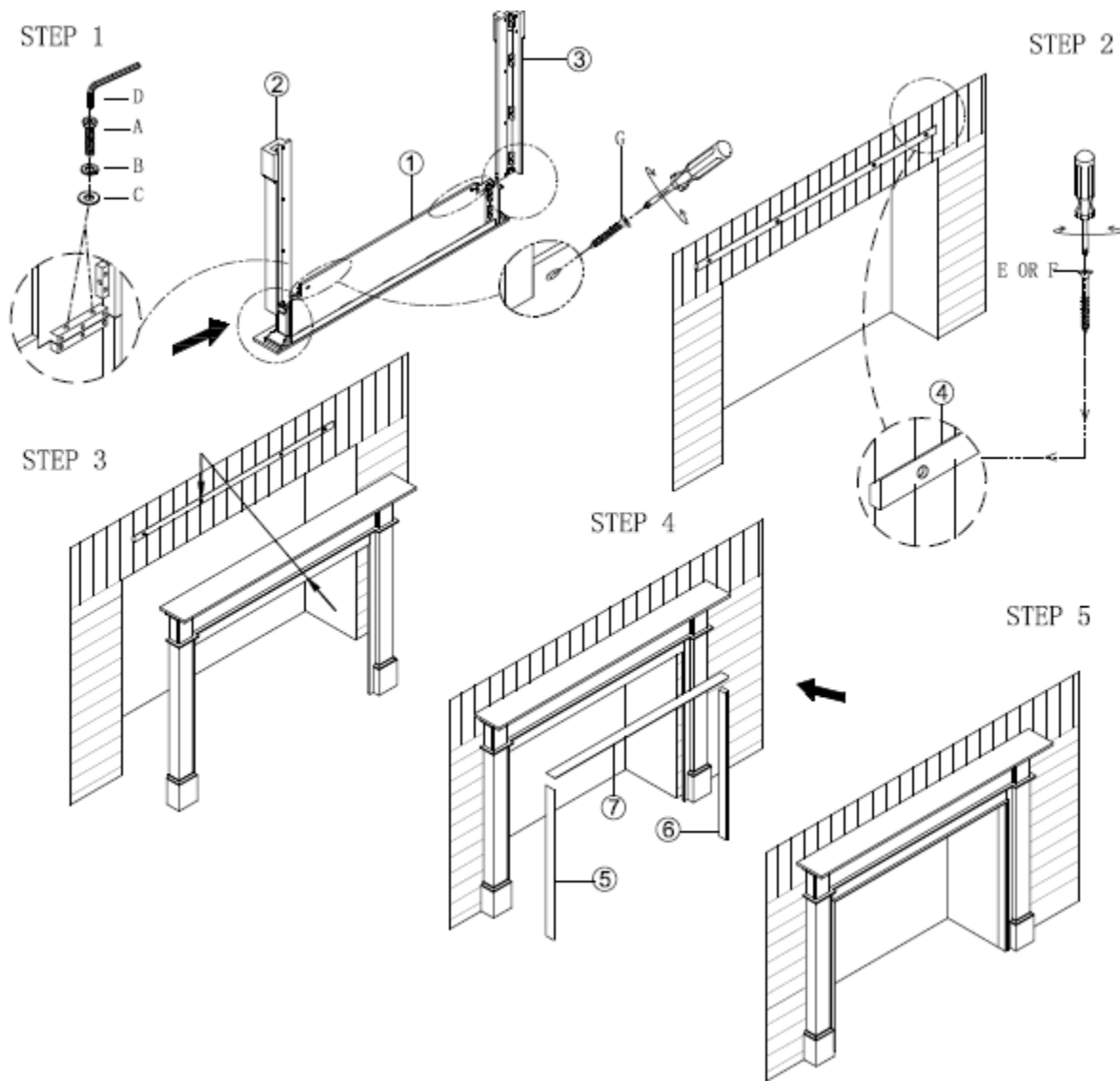


Drawing B

Don't forget to tag us! We would love to see your new mantel.
#mantelsdirect #modernember



MODERN EMBER



Don't forget to tag us! We would love to see your new mantel.
#mantelsdirect #modernember

