

# caracole



## OUT & ABOUT

con-sidtab-004

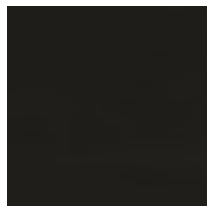
**COLLECTION:** CARACOLE CLASSIC

**DIMENSIONS:** 22W x 21D x 27H

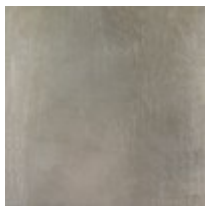
Designers love a nest of tables and with these, the possibilities are endless. The three tables are each a different size and shape. The largest table is a rectangular shape with a half circle on one side, which we thought would make it appropriate for a small lamp table. The middle table is round and the smallest table is a square. A slightly splayed Satin Ebony leg miters up into the Taupe Silver Leaf top for a sharp architectural detail.

**CONSTRUCTION:** Table A: 22"W x 21"D x 27"H. | Table B: 18" dia x 25"H. | Table C: 11.75"W x 11.75"D x 22.75"H. |

**FINISH:**



Satin Ebony



Taupe Silver  
Leaf