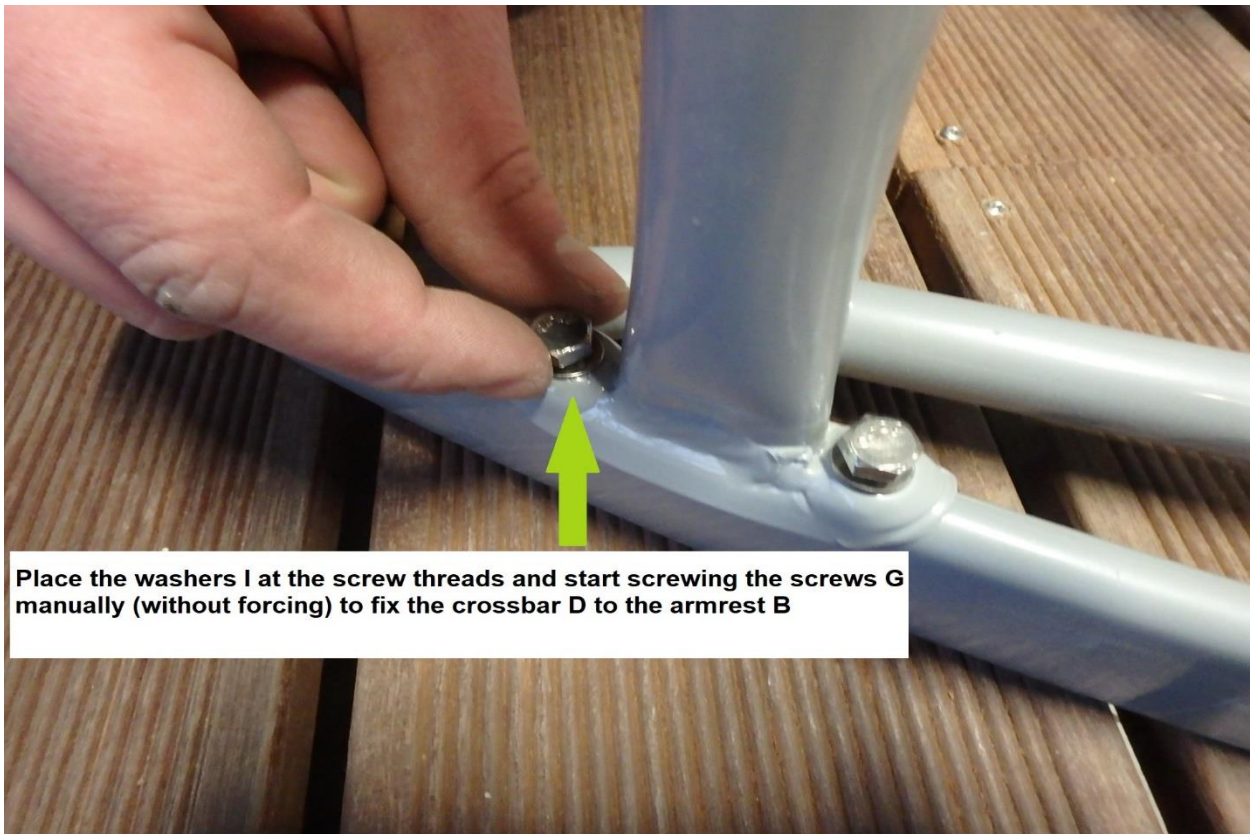
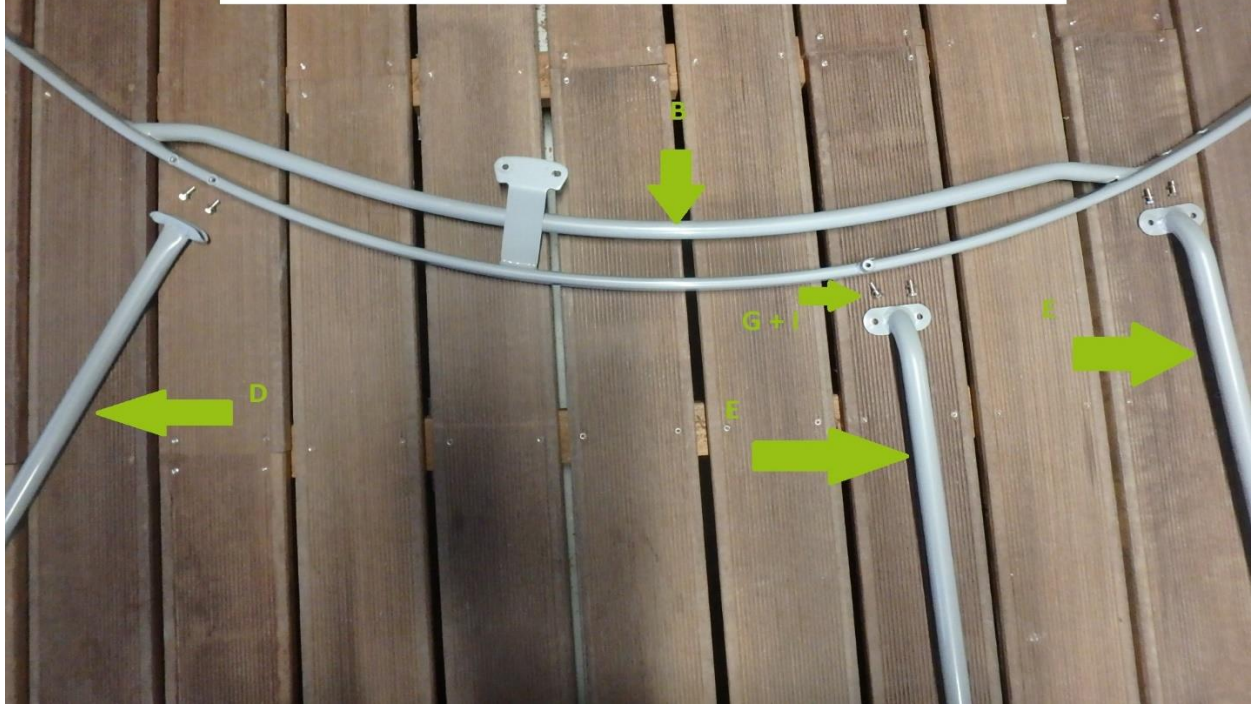


Assembly procedures

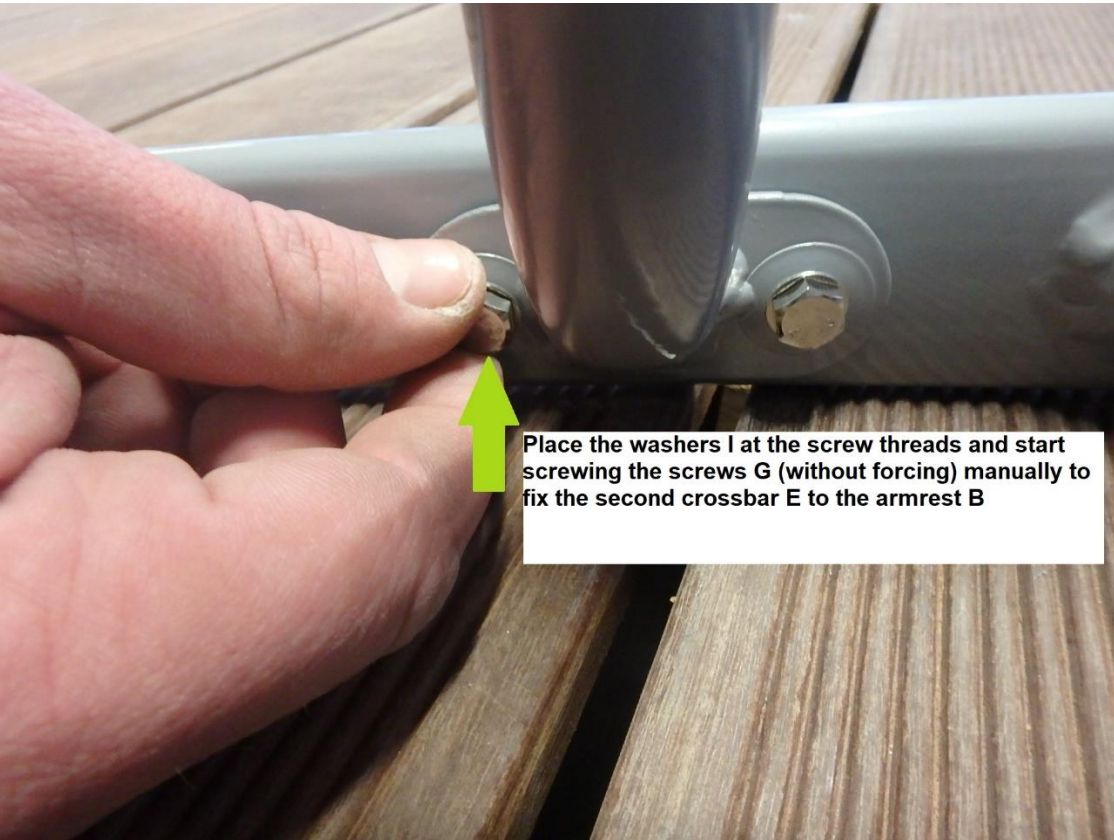
Take the right armrest (part B on the manual) and place the transaxle bars E and D in front of the corresponding screw threads. For this assembly step, use screws G (m6*16) and washers I.



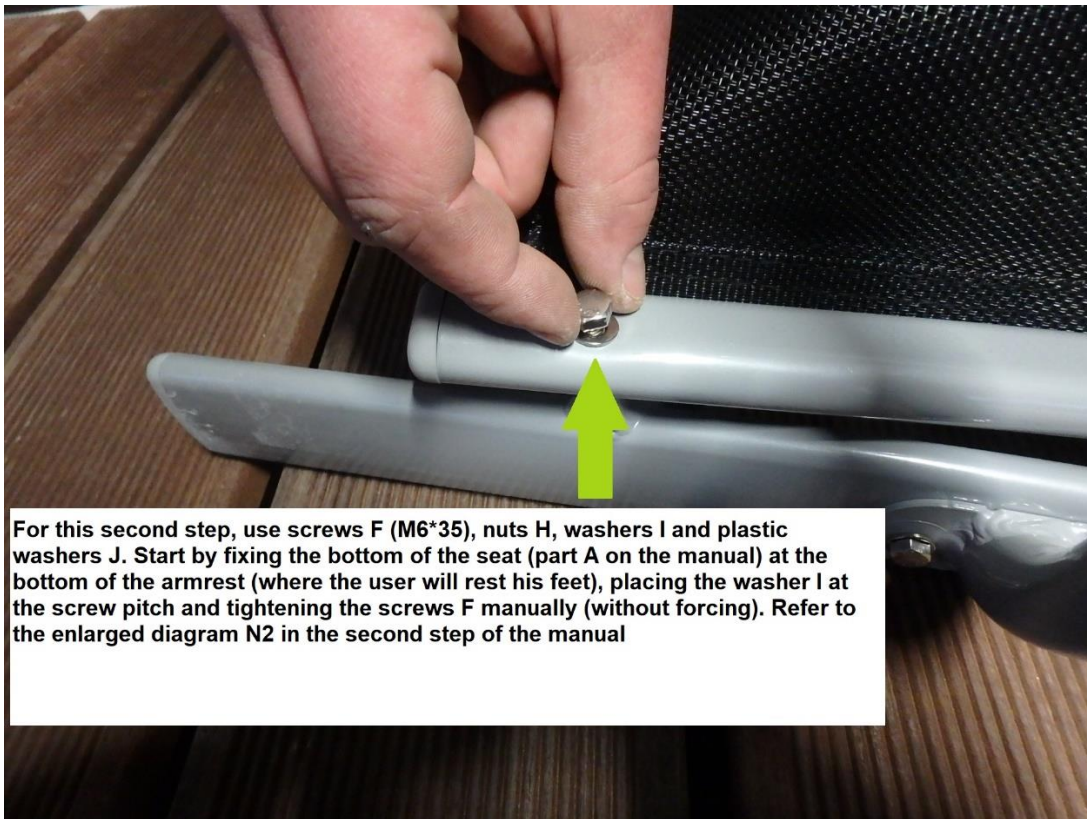
Place the washers I at the screw threads and start screwing the screws G manually (without forcing) to fix the crossbar D to the armrest B



Place the washers I at the screw threads and start screwing the screws G (without forcing) manually to fix the first crossbar E to the armrest B



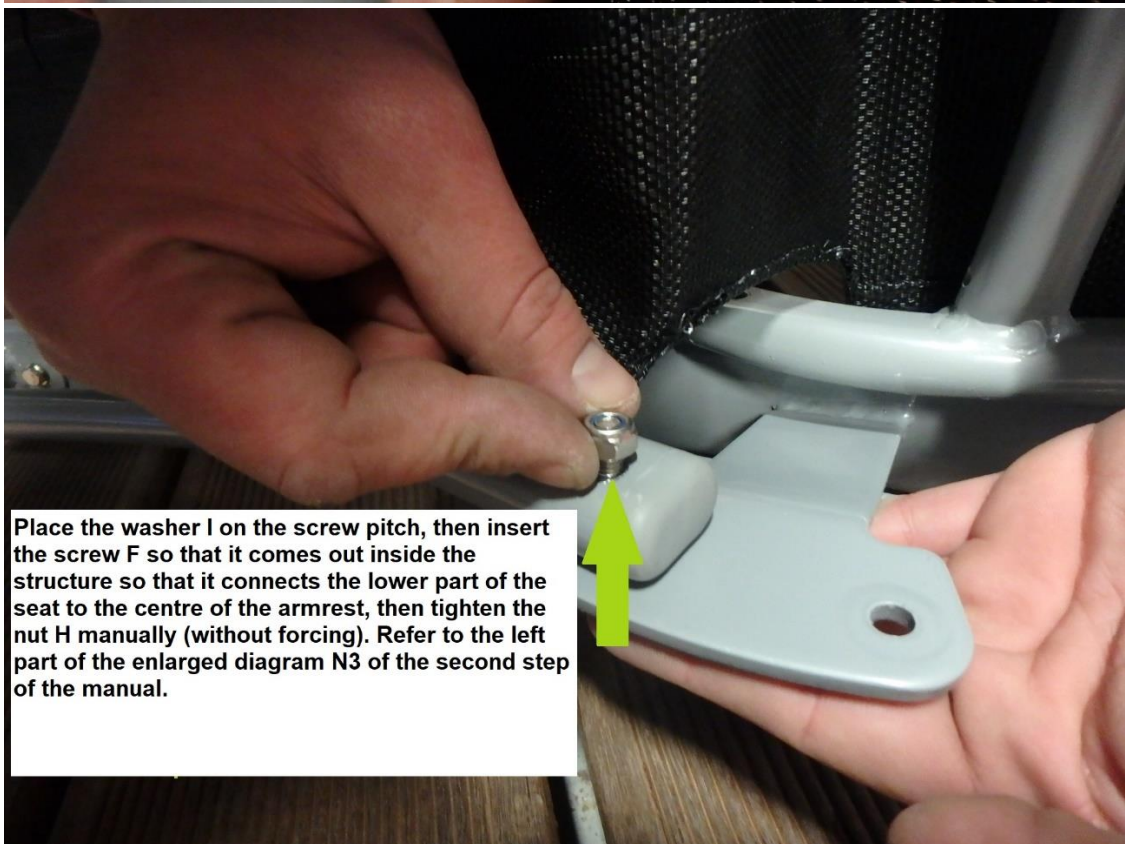
Place the washers I at the screw threads and start screwing the screws G (without forcing) manually to fix the second crossbar E to the armrest B



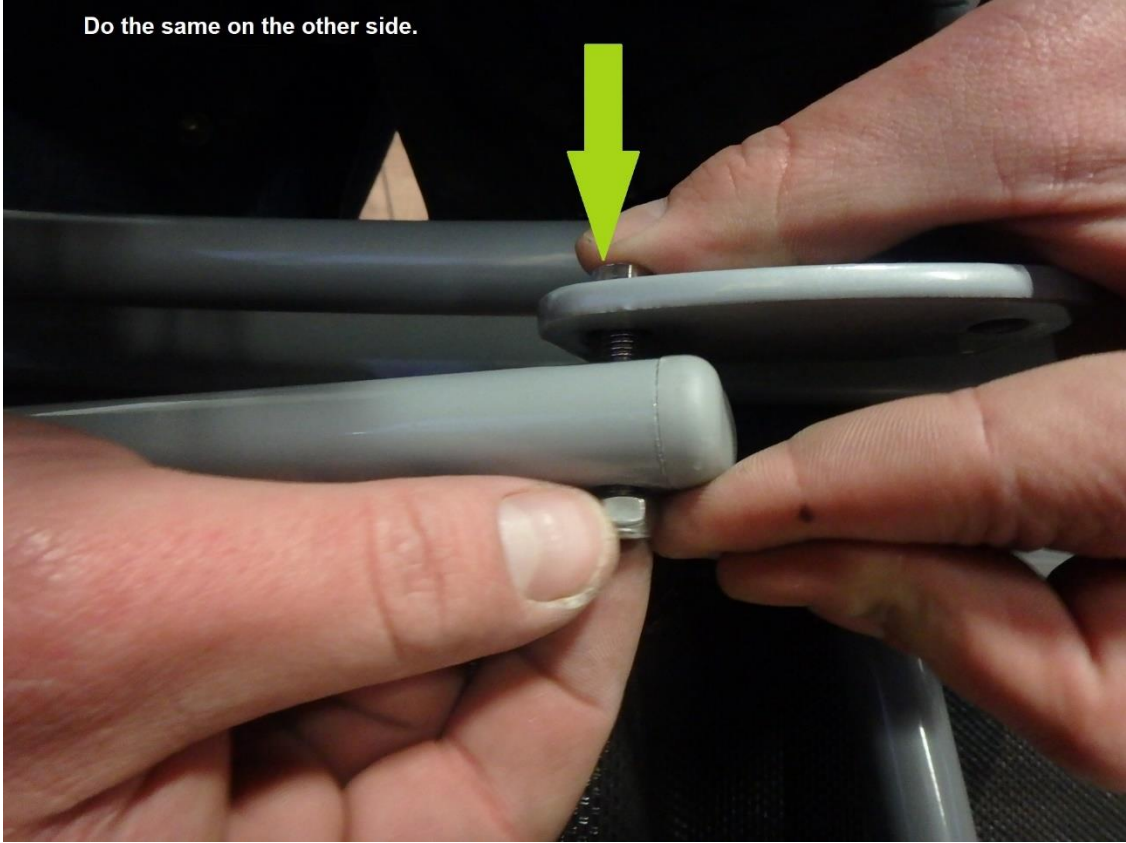




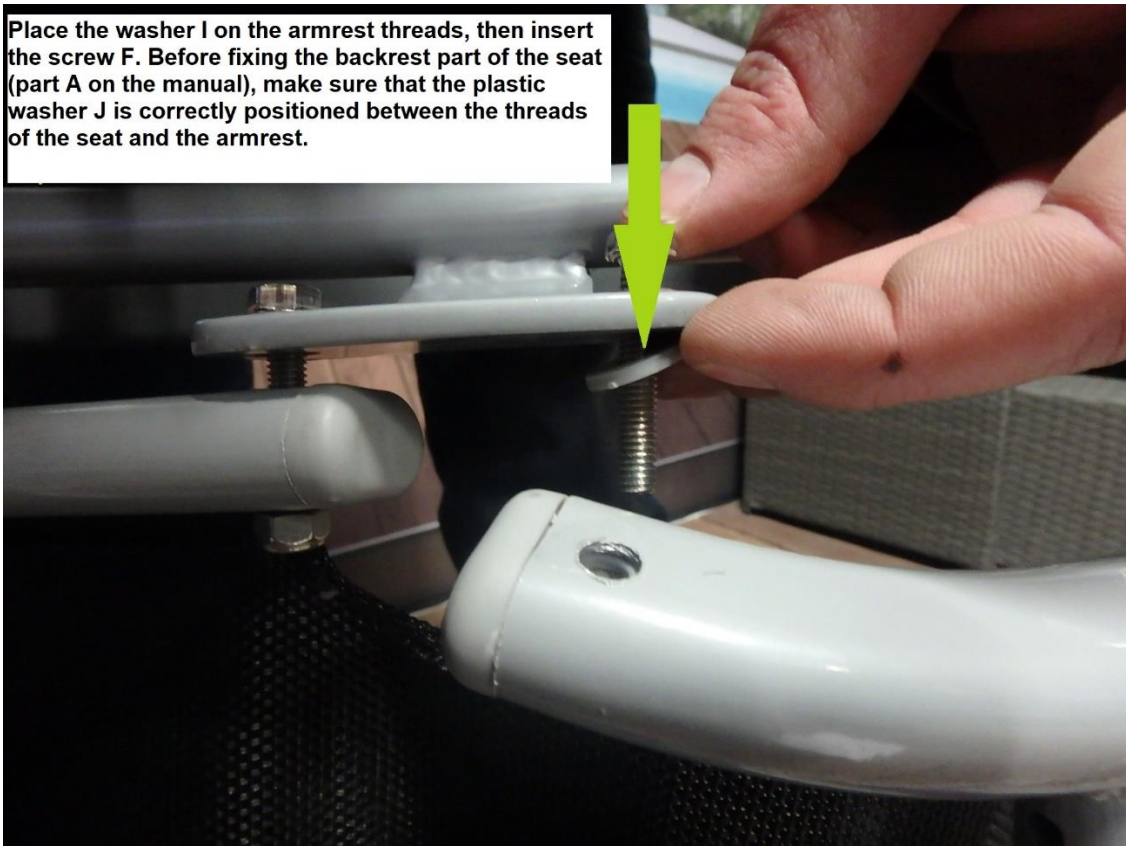
Do the same on the other armrest



Place the washer I on the screw pitch, then insert the screw F so that it comes out inside the structure so that it connects the lower part of the seat to the centre of the armrest, then tighten the nut H manually (without forcing). Refer to the left part of the enlarged diagram N3 of the second step of the manual.



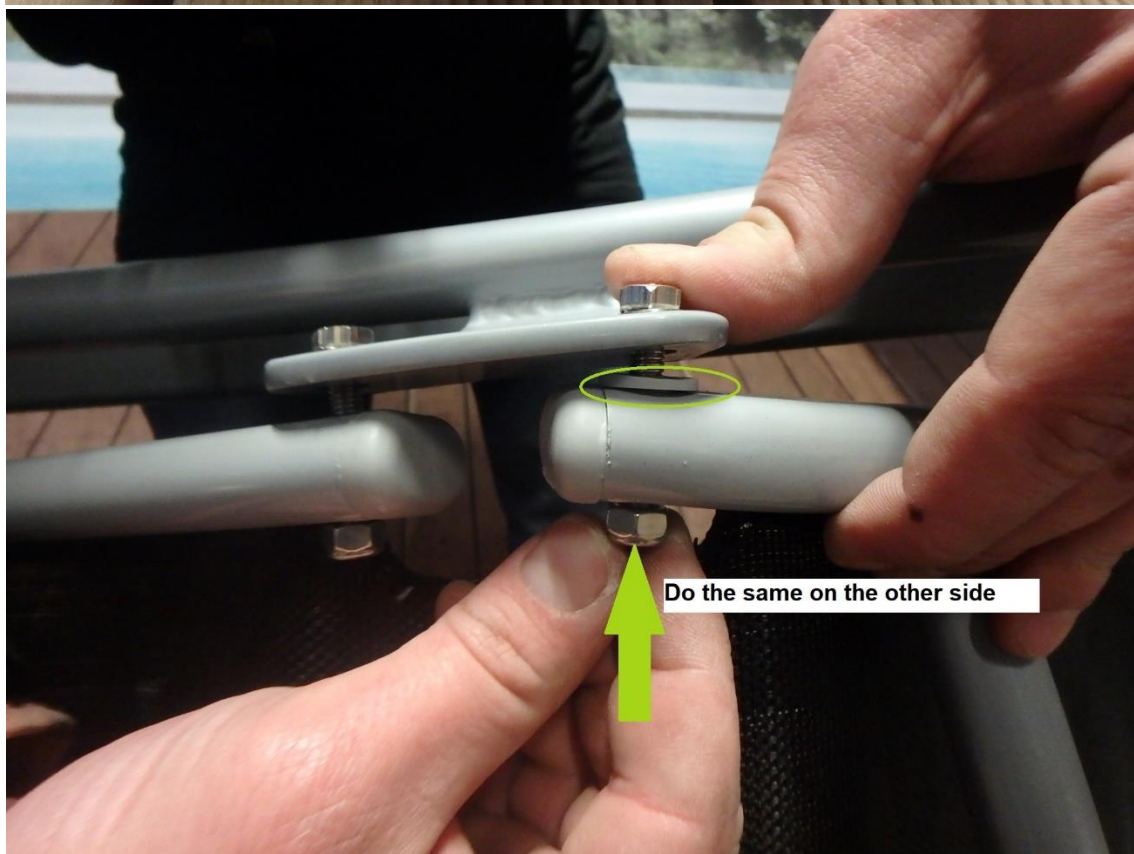
Place the washer I on the armrest threads, then insert the screw F. Before fixing the backrest part of the seat (part A on the manual), make sure that the plastic washer J is correctly positioned between the threads of the seat and the armrest.

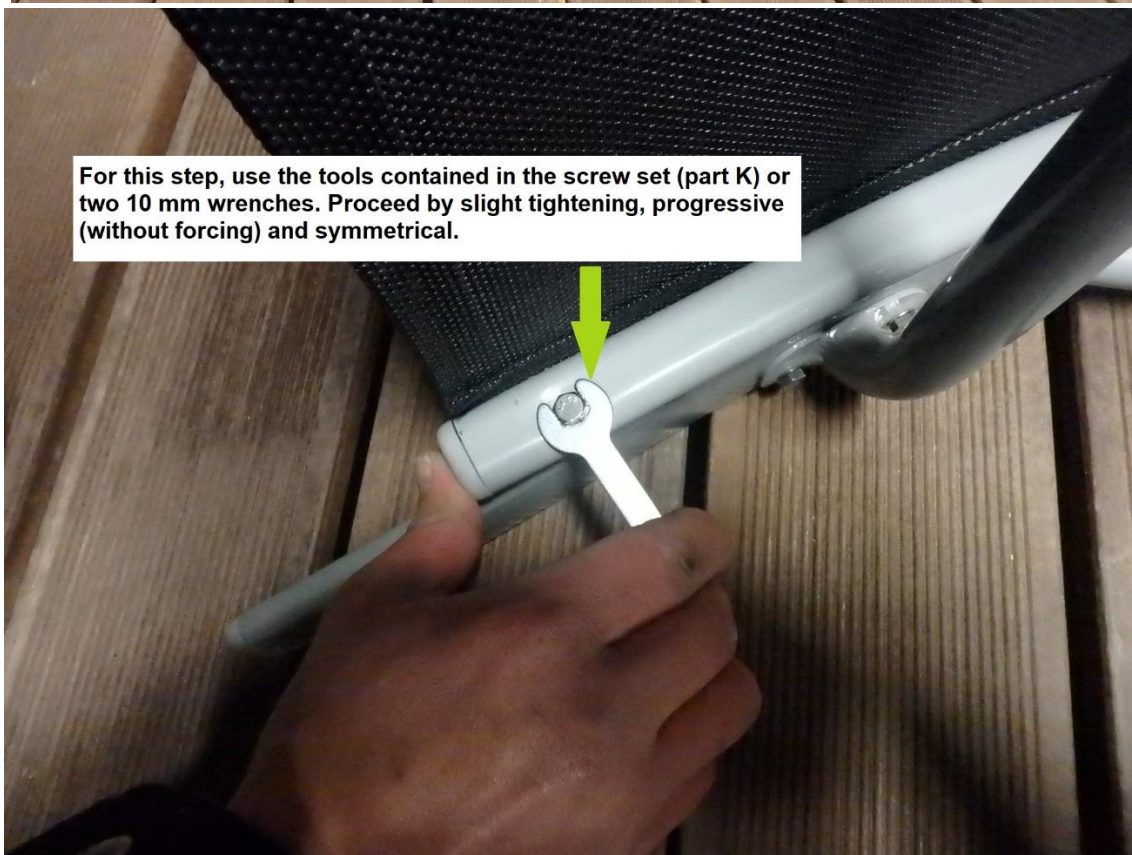
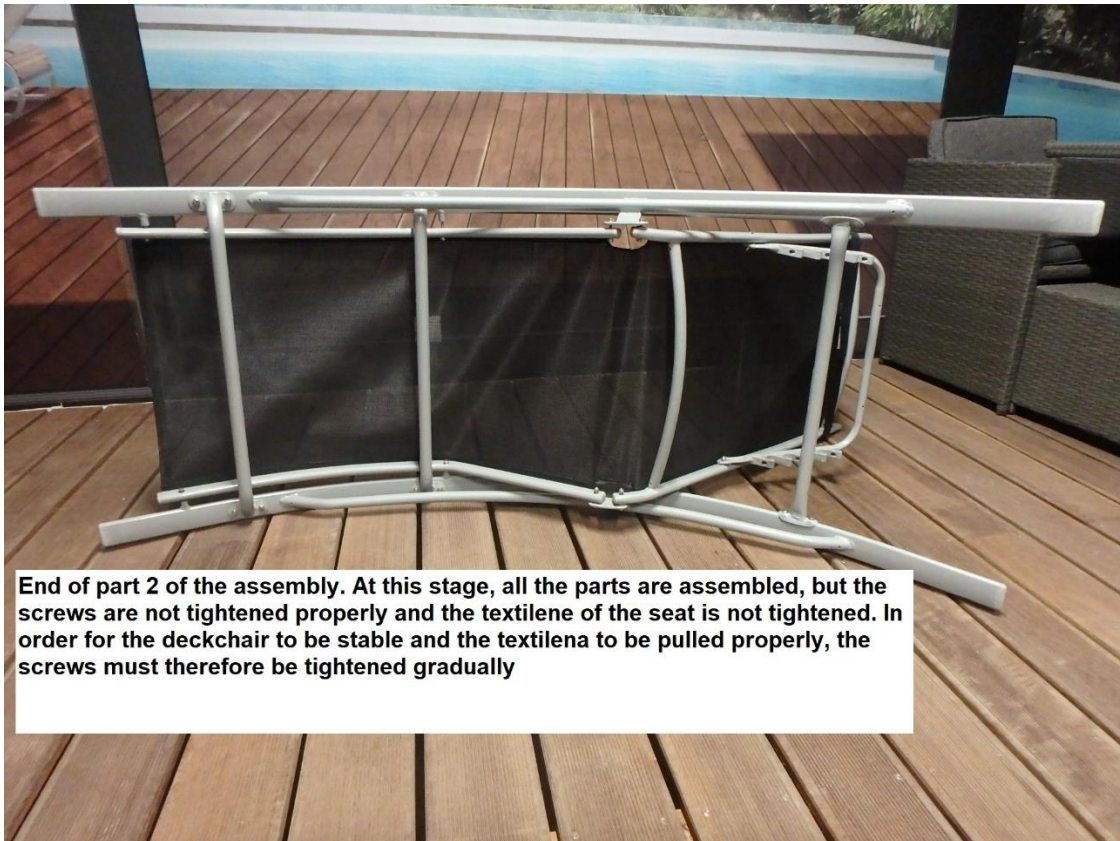


Tighten everything manually (without forcing) using the nut H. Refer to the right-hand side of the enlarged diagram N3 of the second step of the manual.

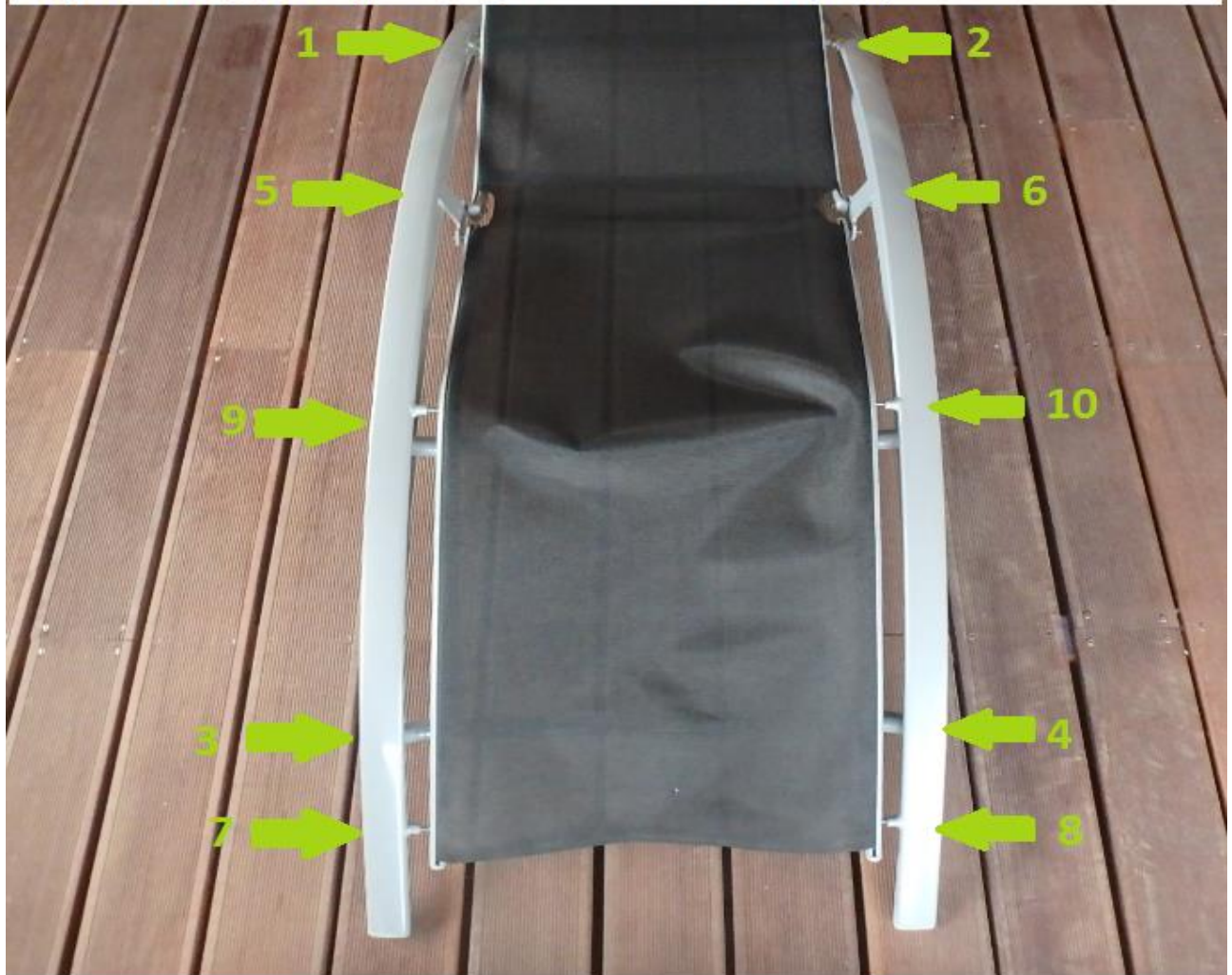


Do the same on the other side

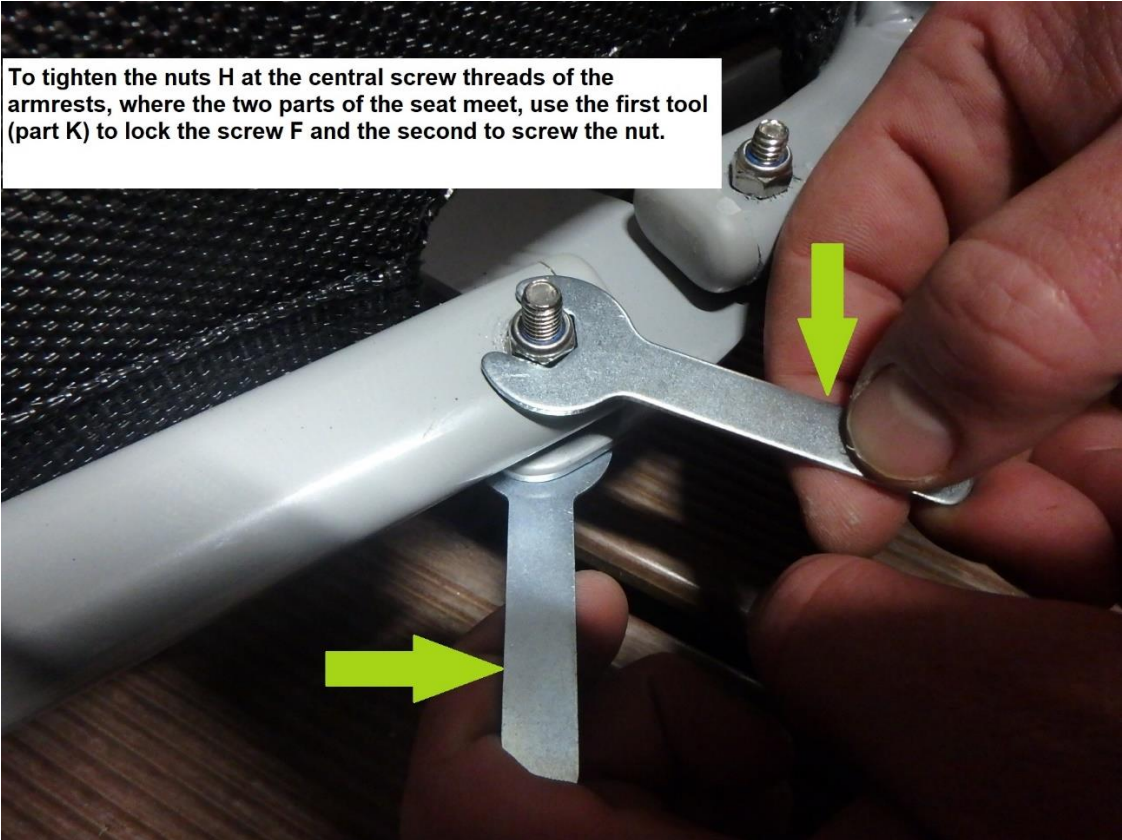




To tighten the textilene optimally, gradually tighten each screw (always without forcing). Start with a screw, then the one opposite (see the tightening frequency as an example).



To tighten the nuts H at the central screw threads of the armrests, where the two parts of the seat meet, use the first tool (part K) to lock the screw F and the second to screw the nut.



Do not hesitate to repeat this progressive tightening several times. This operation will not only tighten the textilene of the seat, but also stabilize the 4 feet of the aluminum structure on the ground.





End of Part 3. The seat is now perfectly stretched and the deckchair is stable.