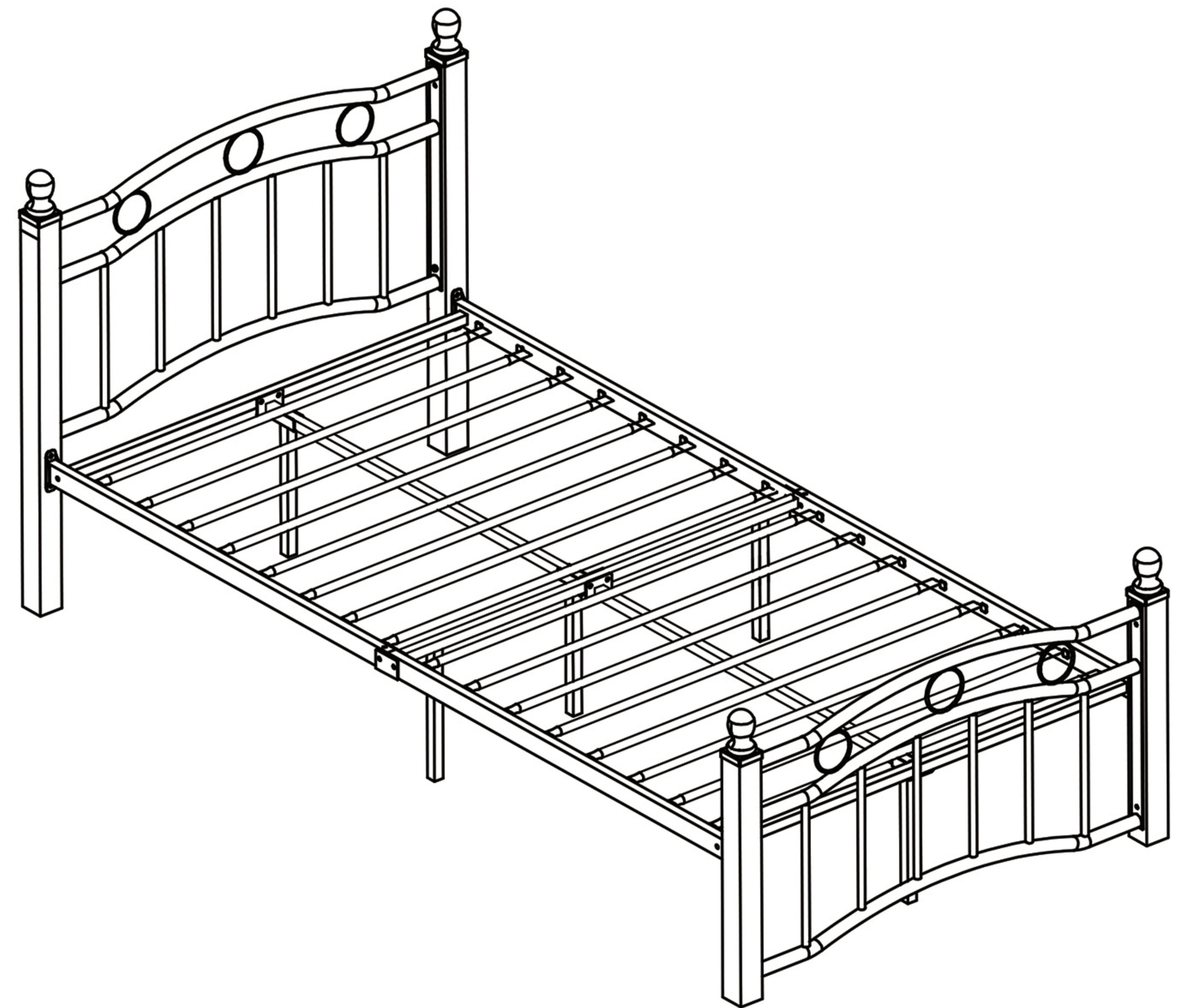
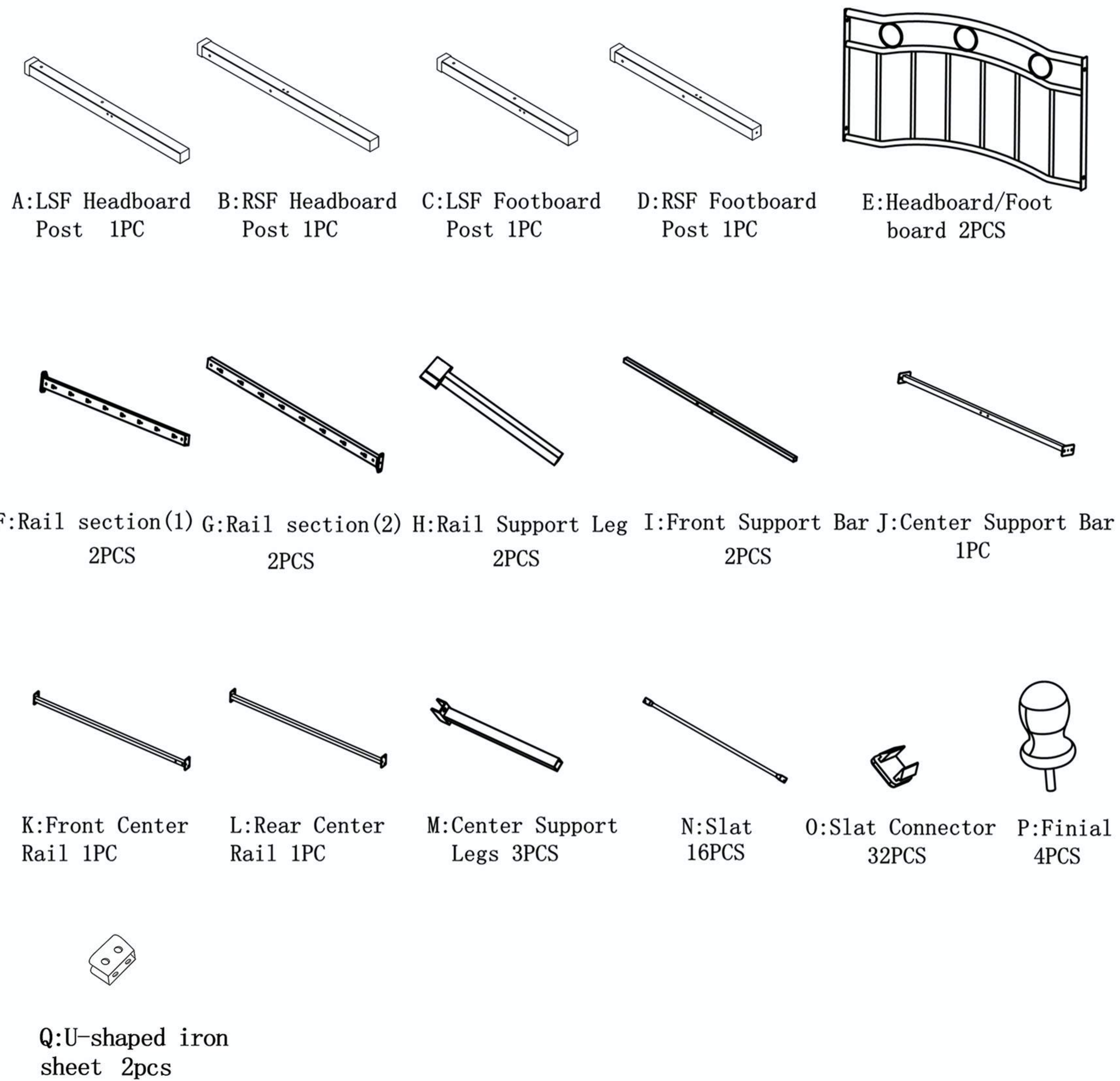


ASSEMBLY INSTRUCTION
BED
USAN1019801A
B025Q



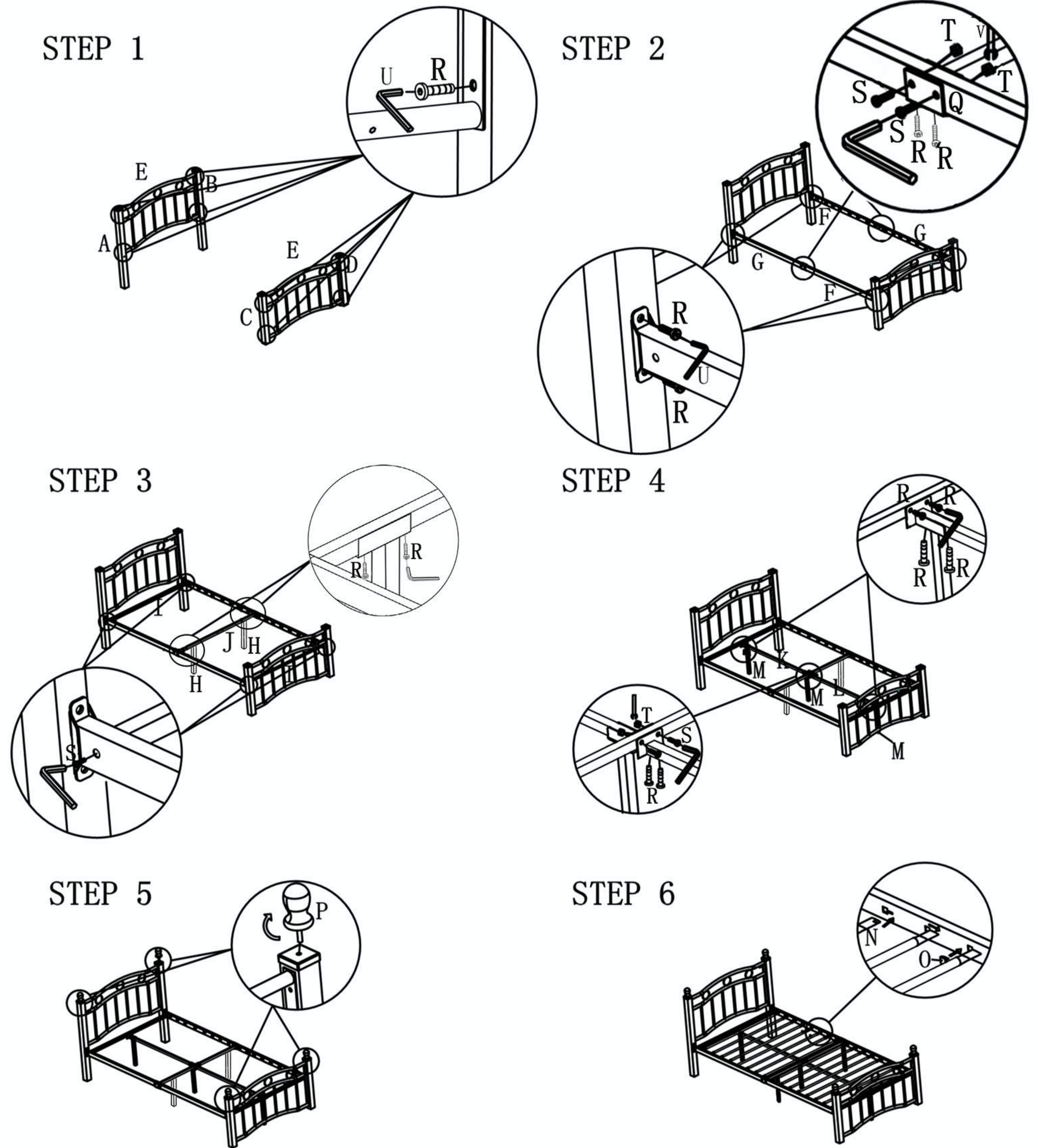
PART LIST:



HARDWARE LIST:



Note: Pls do not tighten all bolts until the bed is assembled completely



Please insert all slat connectors completely before putting the mattress

! For items use on wooden floor, hard surfaces or carpets, it is recommended to Install protective pads under all legs and supports to avoid/prevent from damages/scratches and discoloration.