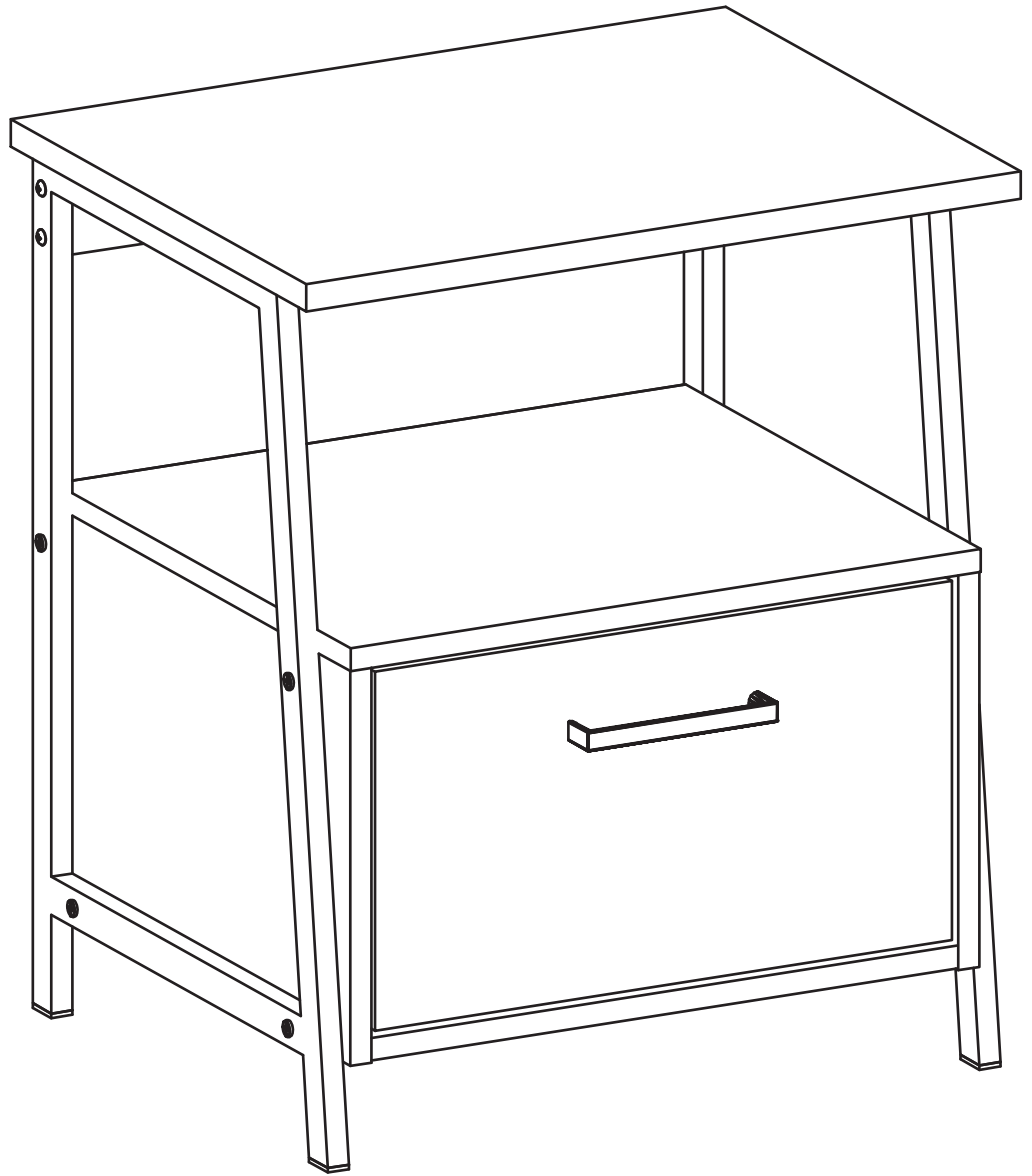


Installation & Assembly



SIDE TABLE

► Table of Contents

Part Identification	2
Hardware Identification	3
Assembly steps	4-20
Inhaltsverzeichnis	21-25
manuale di istruzioni	26-30
manual de instrucciones	31-35
Safety	36-39
Warranty	40-47

► Assembly Tools Required



No. 2 Phillips Screwdriver and Flat head screwdriver
Shown Actual Size



Hammer
Not actual size



Skip the power trip.
This time.

► Part Identification

1.TOP (1)

2.LEFT LEG (1)

3.RIGHT LEG (1)

4.LEFT END (1)

5.RIGHT END (1)

6. BRACE (2)

7. UPPER BACK (1)

8.SHELF (1)

9.LOWER BACK (1)

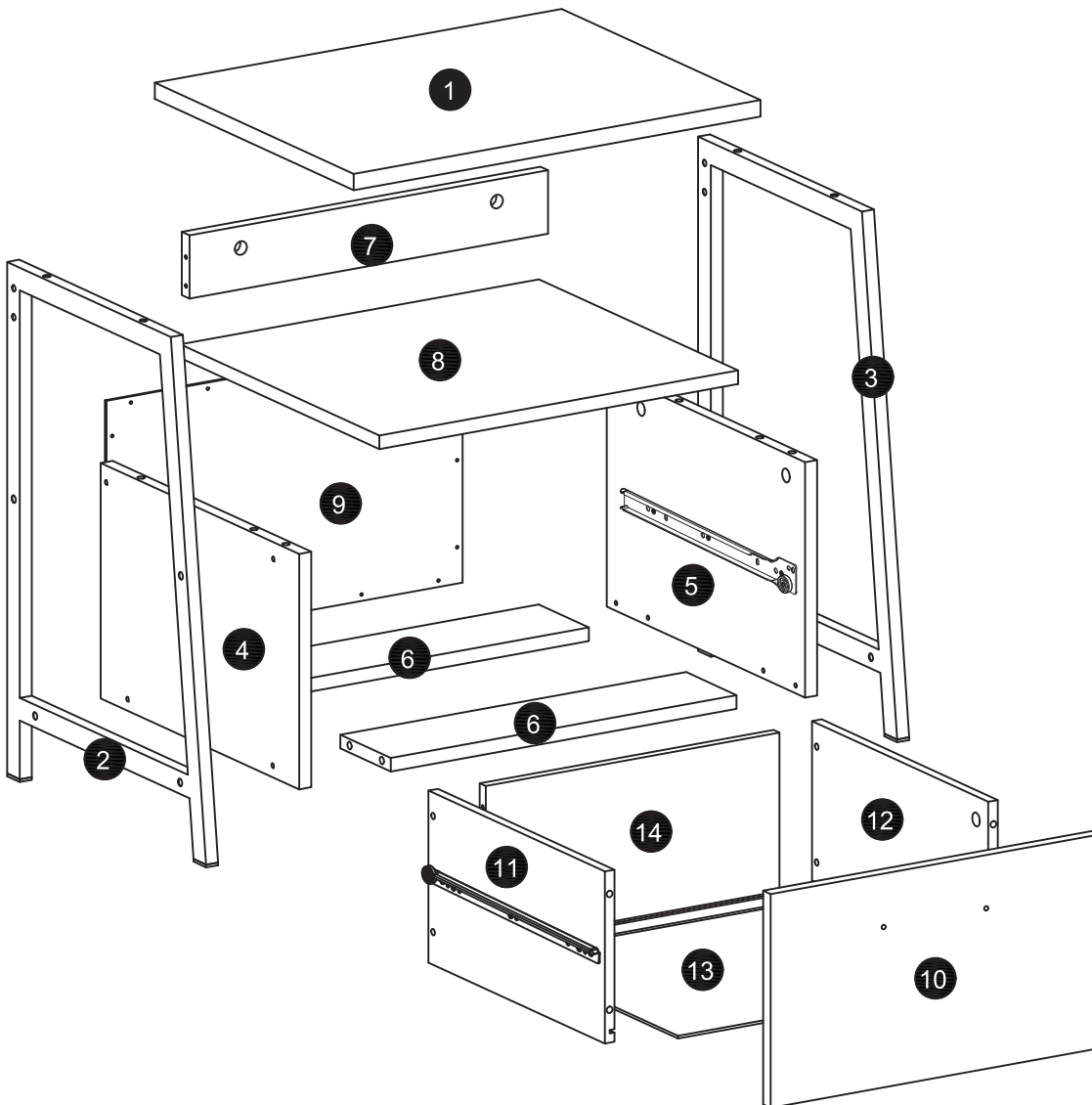
10.DRAWER FRONT (1)

11.LEFT DRAWER SIDE (1)

12.RIGHT DRAWER SIDE (1)

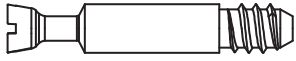
13.DRAWER BOTTOM (1)

14.DRAWER BACK (1)



! While not parts are labeled, some of the parts will have a label or an inked letter on the edge to help distinguish similar parts from each other. Use this part identification to help identify similar parts.

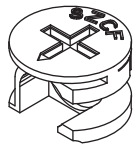
► **Hardware Identification**



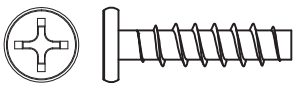
A.CAM SCREW -14+1



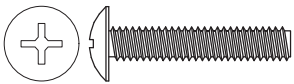
C.∅8x30WOOD DOWEL - 5+1



E.SMALL HIDDEN CAM - 4+1



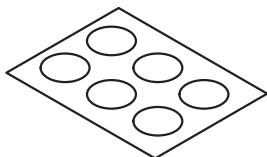
G.1" LARGE HEAD SCREW - 8+1



I.7/8" MACHINE SCREW - 2+1



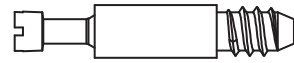
K.3/4"NAIL - 16+1



M.APPLIQUE CARD - 3



B.HIDDEN CAM -14+1



D. SMALL CAM SCREW - 4+1



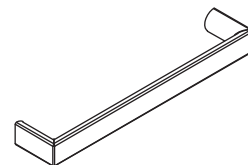
F.1-1/2"FLAT HEAD SCREW - 4+1



H.1-1/2"FLAT HEAD SCREW - 4+1



J.1-1/2" LARGE HEAD SCREW - 4+1



L.PULL -1

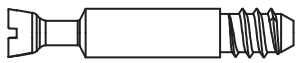
► STEP 1

Assemble your unit on a carpeted floor or on the empty carton to avoid scratching your unit or the floor.

Turn eight CAM SCREW(A) to the END(4 and 5).

Insert four WOOD DOWEL(C) to the END(4 and 5).

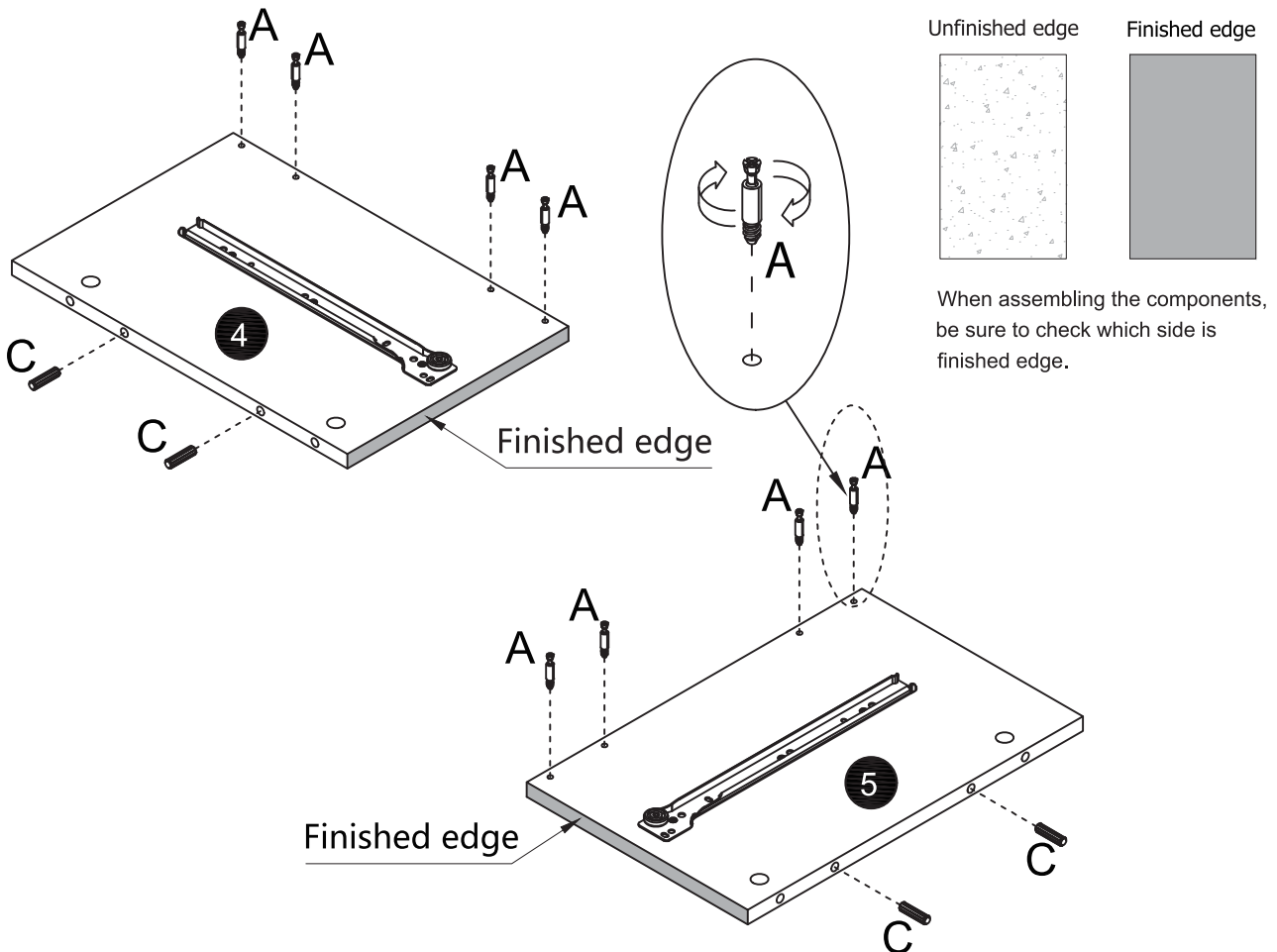
! When assembling the components, be sure to check whether the hole is consistent with the corresponding position on the manual.



A.CAM SCREW - 8



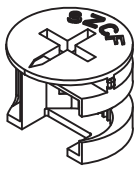
C.Ø8x30WOOD DOWEL - 4



► STEP 2

Fasten the BRACE(6) to the LEFT END(4), use four HIDDEN CAM(B).

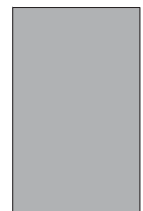
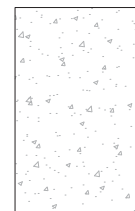
! When assembling the components, be sure to check whether the hole is consistent with the corresponding position on the manual.



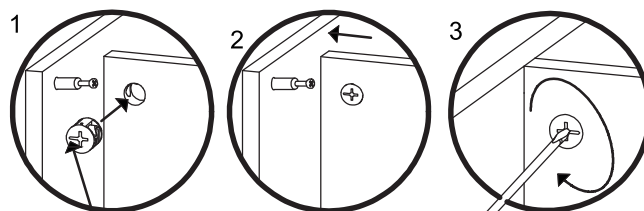
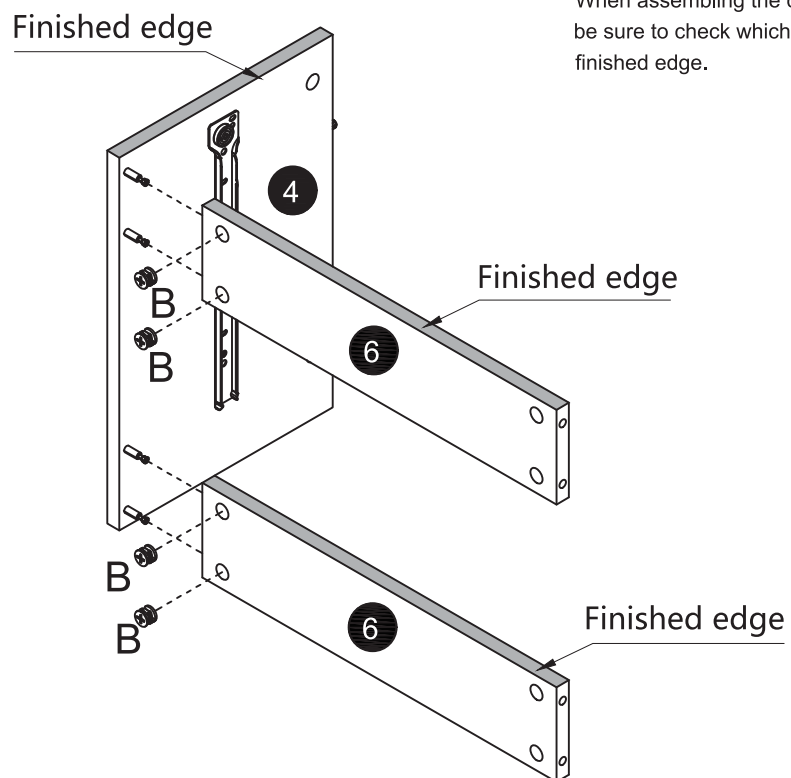
B.HIDDEN CAM - 4

Unfinished edge

Finished edge



When assembling the components, be sure to check which side is finished edge.



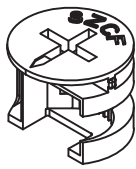
The arrow must point toward the dege of the board.

Flat head screwdriver

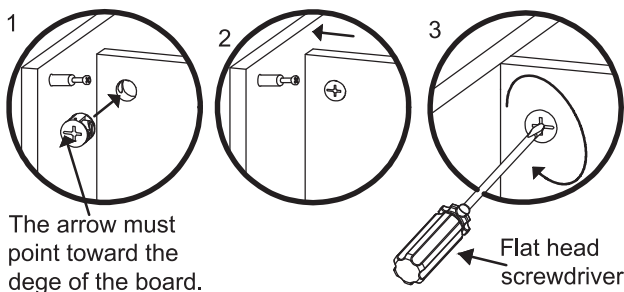
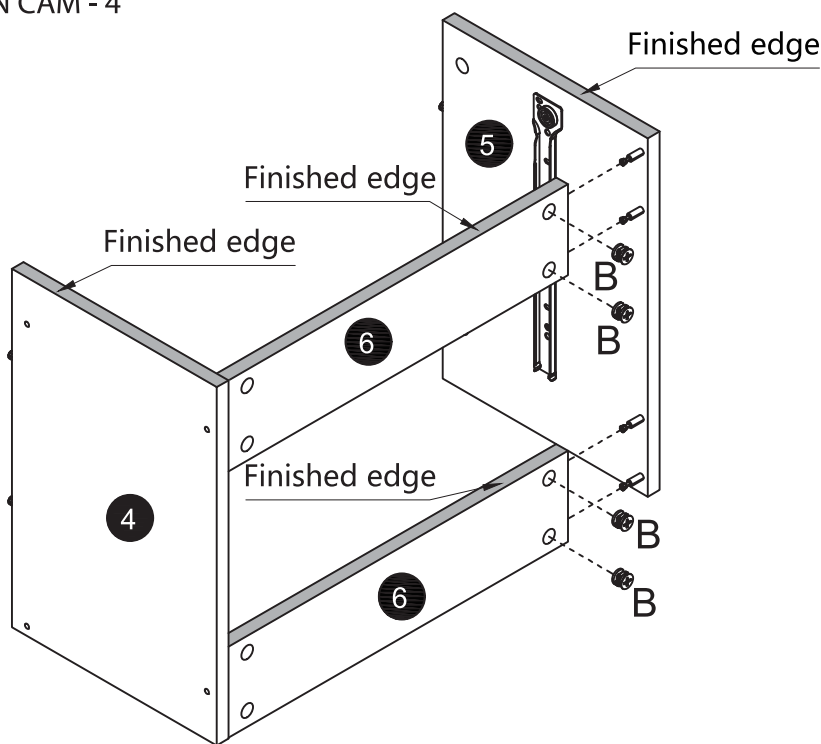
► STEP 3

Fasten the BRACE(6) to the RIGHT END(5), use four HIDDEN CAM(B).

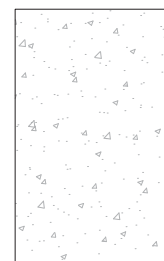
! When assembling the components, be sure to check whether the hole is consistent with the corresponding position on the manual. If you need any help, please feel free to contact us via info@sekeygroup.com.



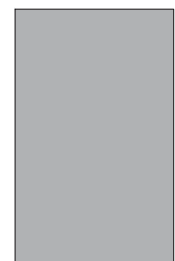
B.HIDDEN CAM - 4



Unfinished edge



Finished edge



When assembling the components, be sure to check which side is finished edge.

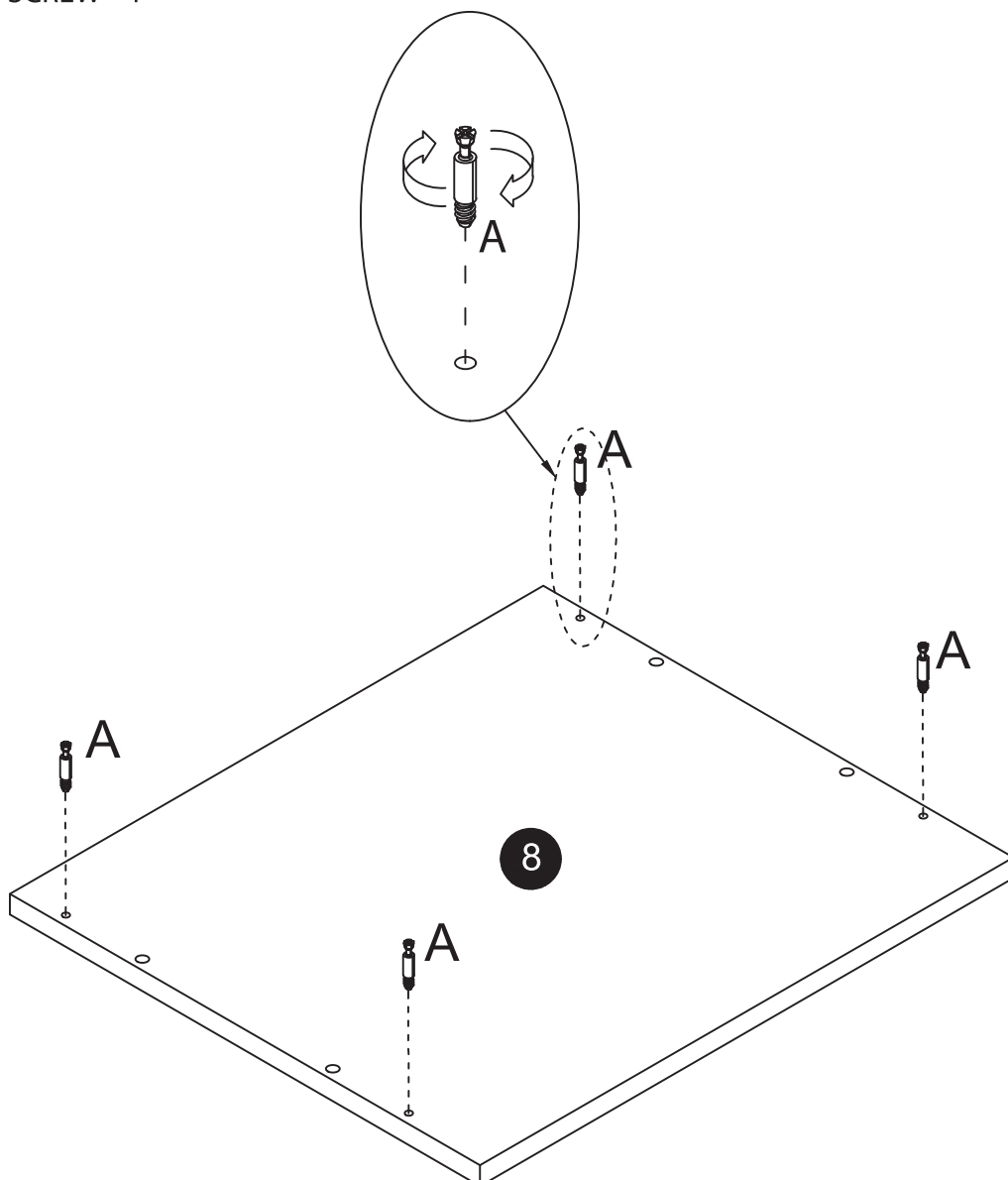
► **STEP 4**

Turn four CAM SCREW(A) to the SHELF(8).

⚠ When assembling the components, be sure to check whether the hole is consistent with the corresponding position on the manual.



A.CAM SCREW - 4



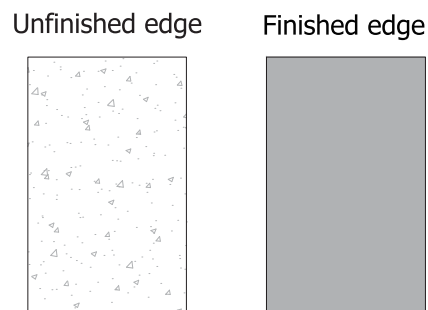
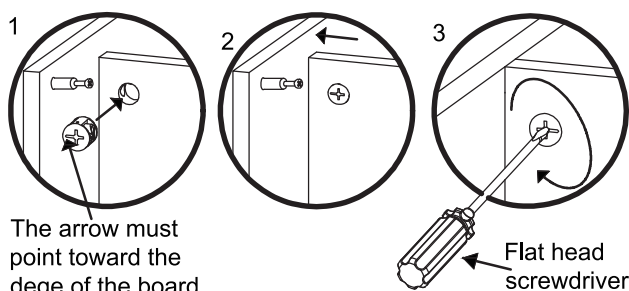
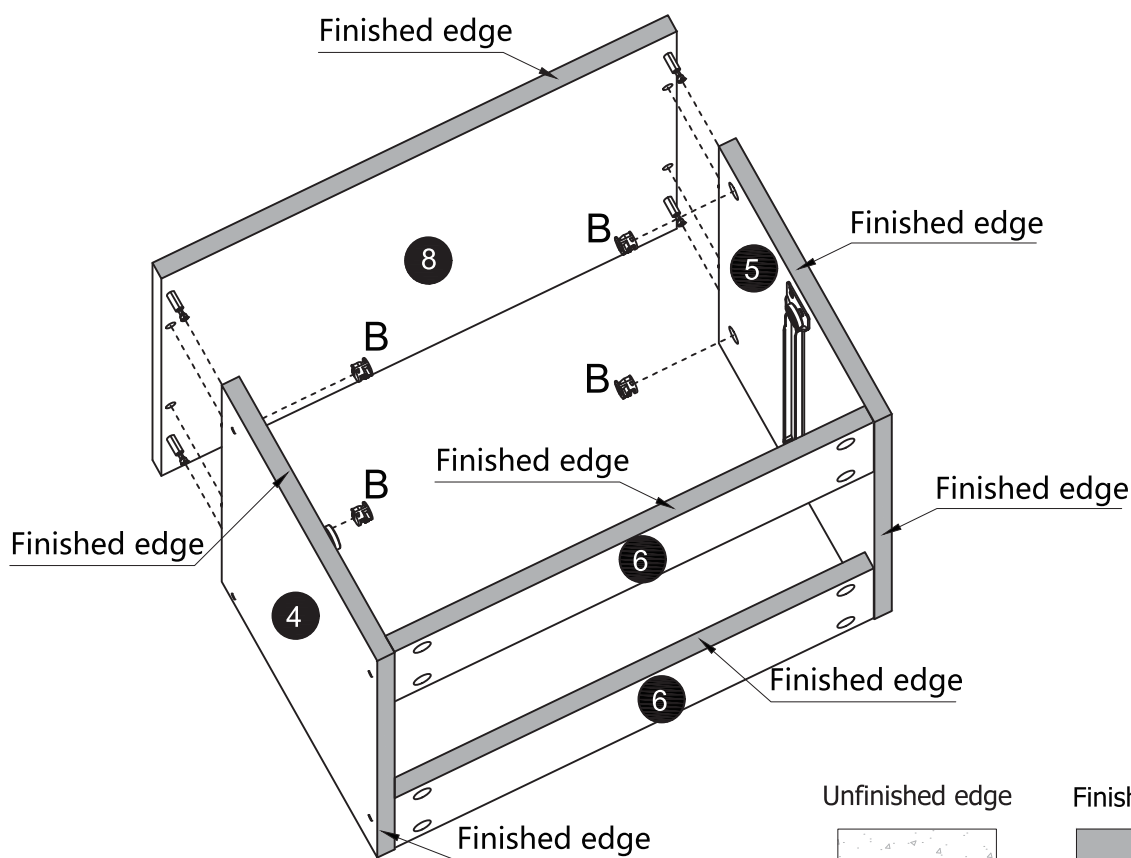
► **STEP 5**

Fasten the SHELF(8) to the END (4 and 5), use four HIDDEN CAM(B).

! When assembling the components, be sure to check whether the hole is consistent with the corresponding position on the manual.



B.HIDDEN CAM -4



When assembling the components, be sure to check which side is finished edge.

► STEP 6

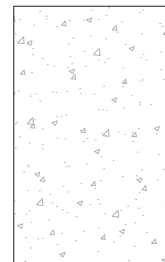
Fasten the LOWER BACK(9) , use sixteen 3/4"NALL(K).

! When assembling the components, be sure to check whether the hole is consistent with the corresponding position on the manual.

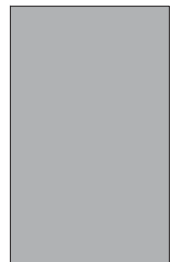


K.3/4"NALL - 16

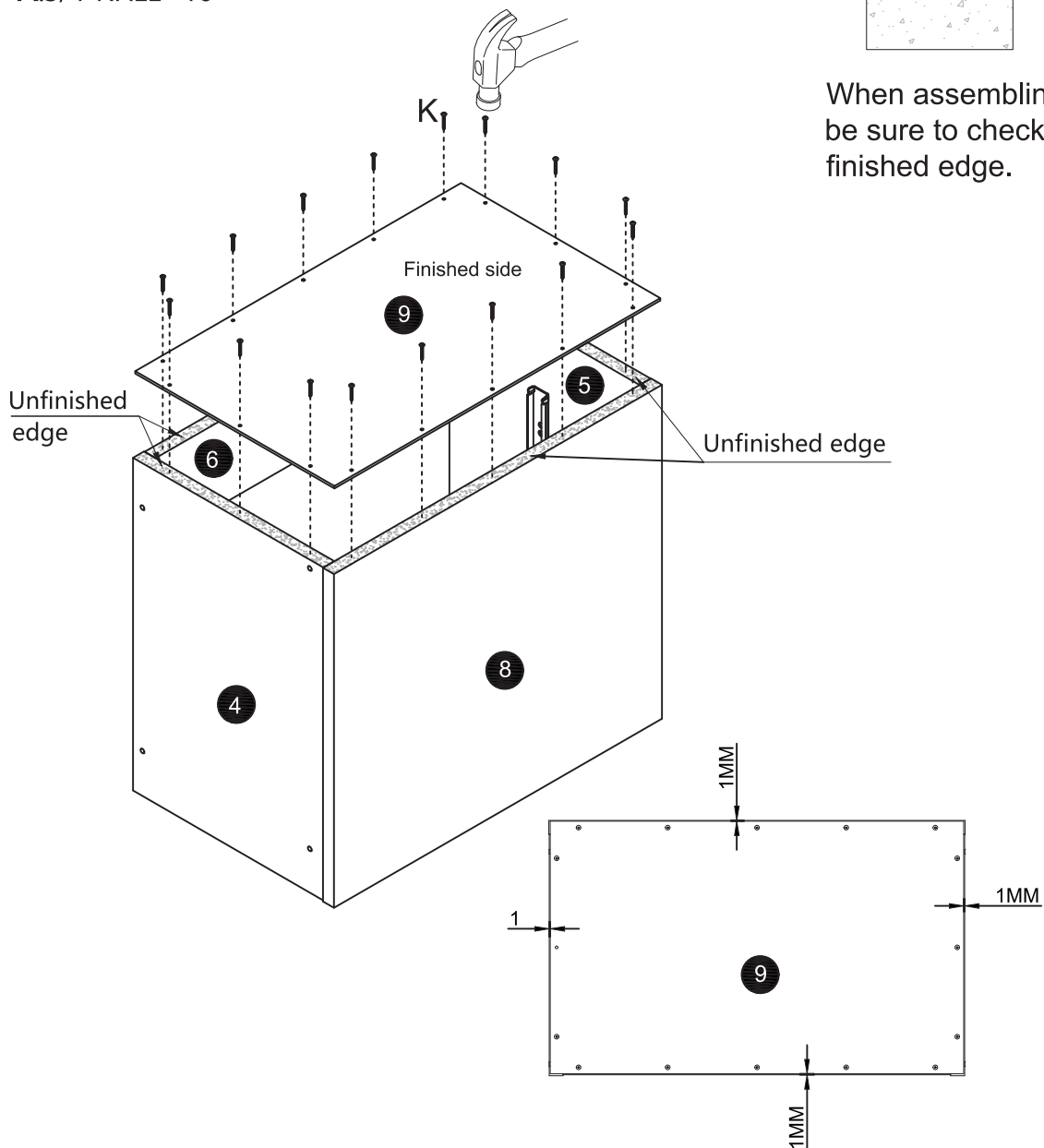
Unfinished edge



Finished edge



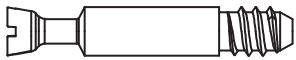
When assembling the components, be sure to check which side is finished edge.



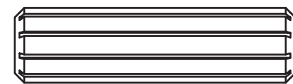
► STEP 7

Turn two CAM SCREW(A) to the TOP(1) Insert one WOOD DOWEL(C) to the UPPER BACK(7).

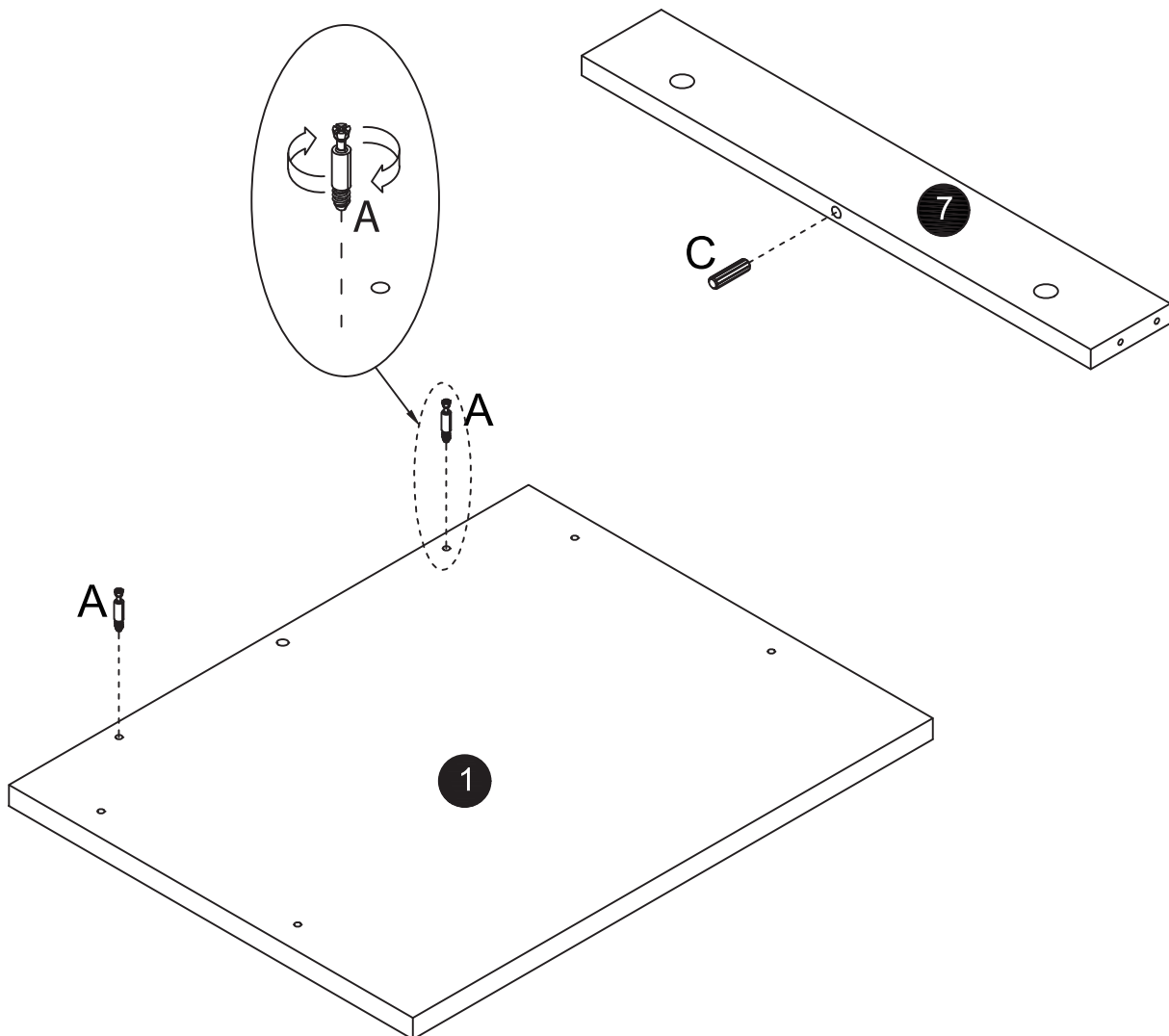
! When assembling the components, be sure to check whether the hole is consistent with the corresponding position on the manual.



A.CAM SCREW - 2



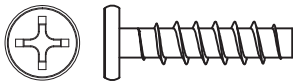
C.Ø8x30WOOD DOWEL - 1



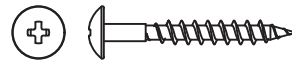
► STEP 8

Fasten the LEFT LEG(2) to the LEFT END(4) and UPPER BACK(7), use four 1" LARGE HEAD SCREW(G) and two 1-1/2" FLAT HEAD SCREW(H).

! When assembling the components, be sure to check whether the hole is consistent with the corresponding position on the manual.

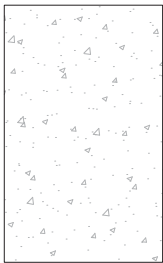


G.1" LARGE HEAD SCREW - 4

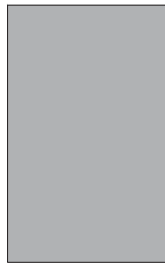


H.1-1/2" FLAT HEAD SCREW - 2

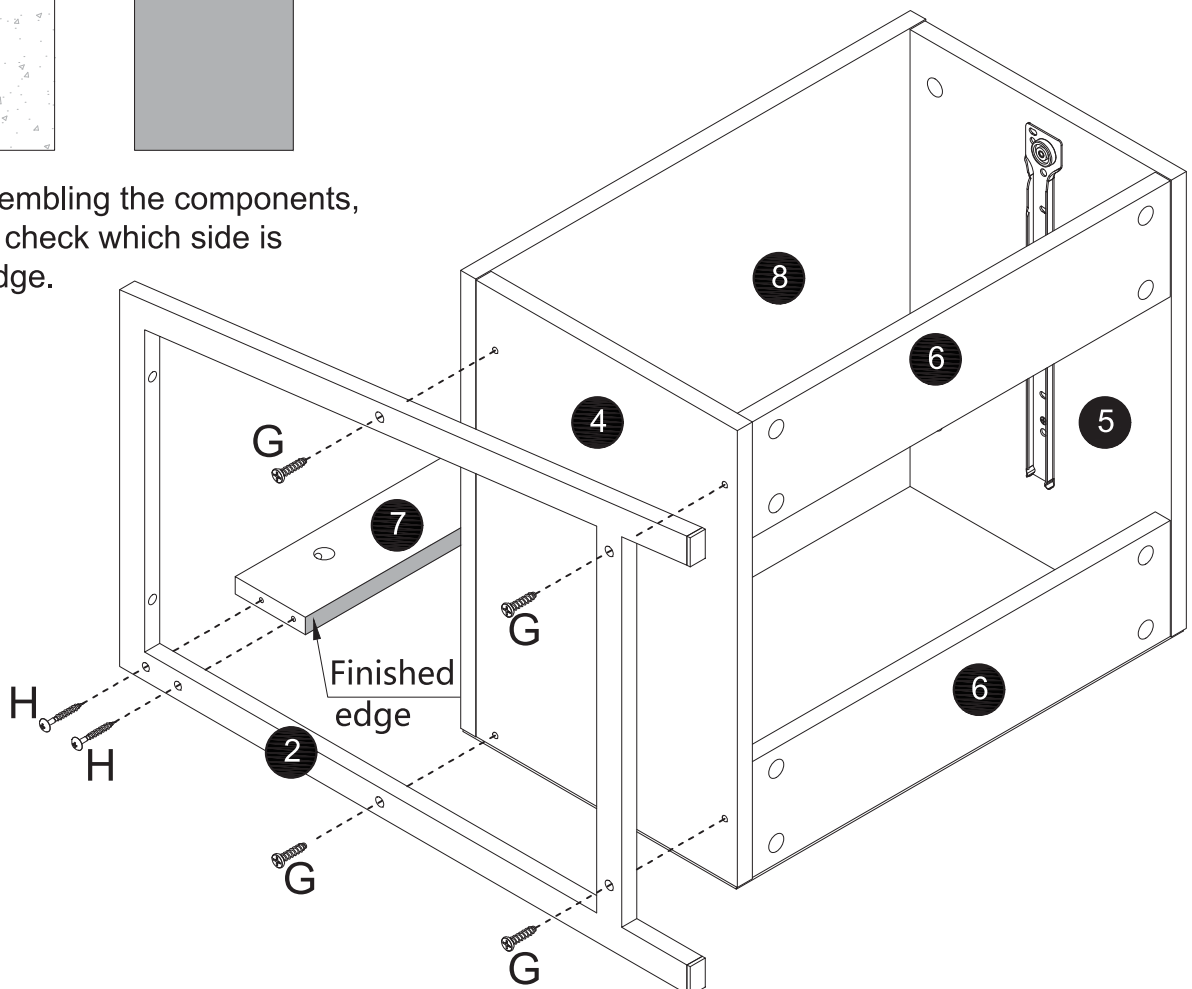
Unfinished edge



Finished edge



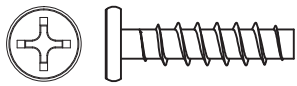
When assembling the components, be sure to check which side is finished edge.



► STEP 9

Fasten the RIGHT LEG(3) to the RIGHT END(5) and UPPER BACK(7), use four 1" LARGE HEAD SCREW(G) and two 1-1/2" FLAT HEAD SCREW(H).

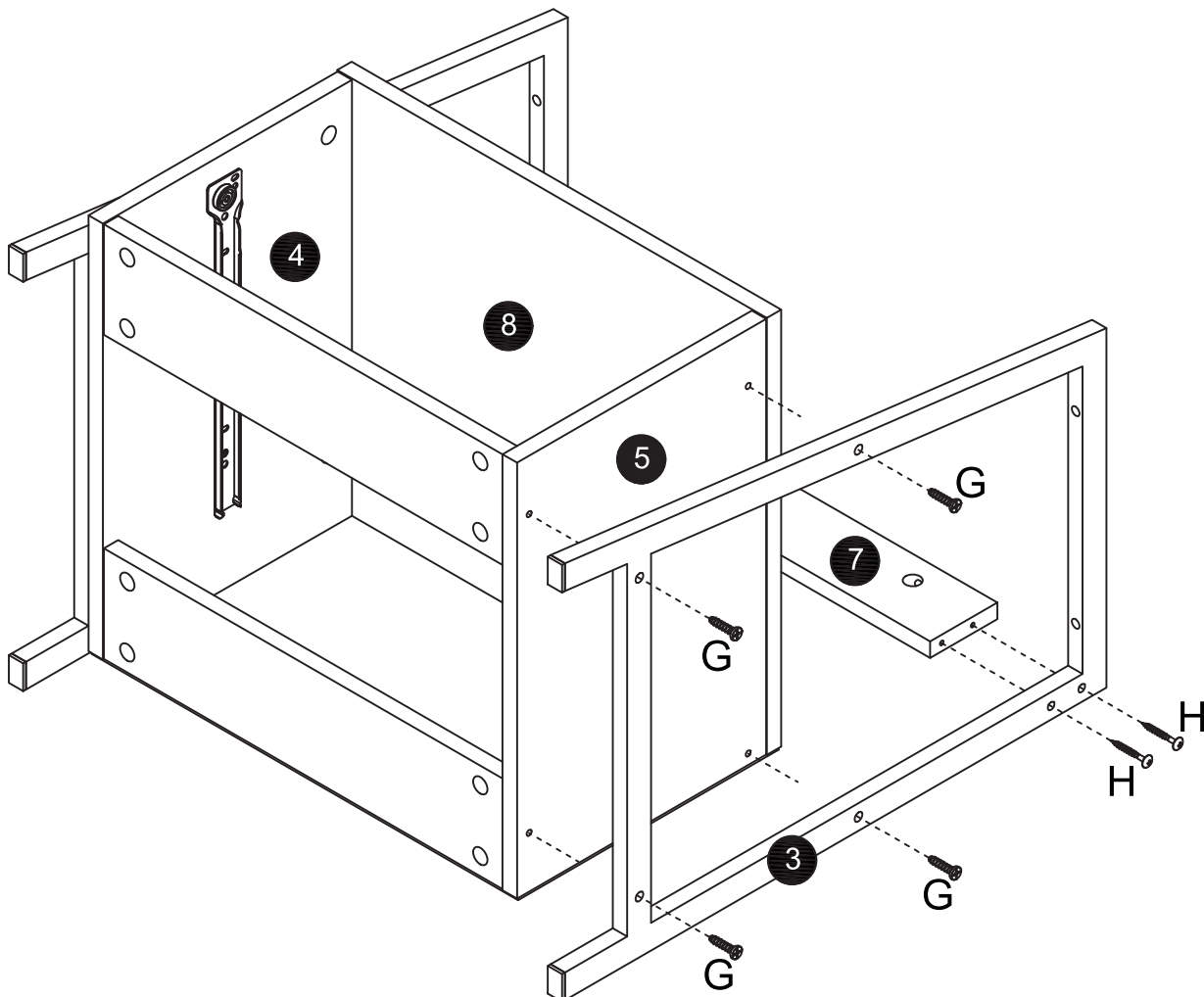
! When assembling the components, be sure to check whether the hole is consistent with the corresponding position on the manual.



G.1" LARGE HEAD SCREW - 4



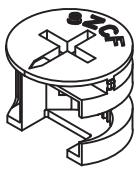
H.1-1/2" FLAT HEAD SCREW - 2



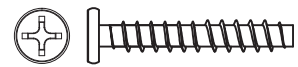
► STEP 10

Fasten TOP(1) to the LEG(2 and 3) and UPPER BACK(7), use four 1-1/2" LARGE HEAD SCREW(J) and two HIDDEN CAM(B).

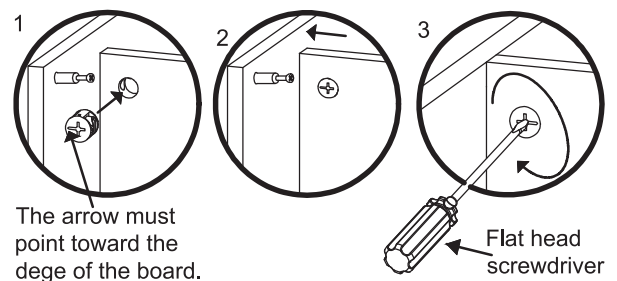
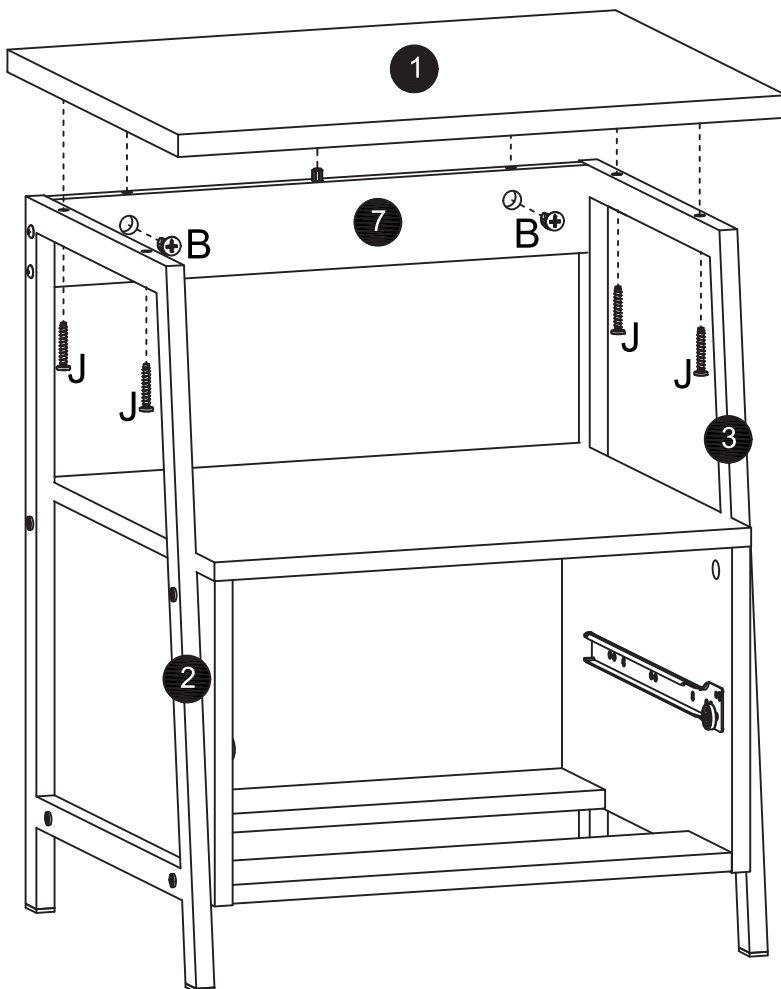
! When assembling the components, be sure to check whether the hole is consistent with the corresponding position on the manual.



B.HIDDEN CAM - 2



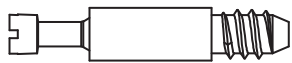
J.1-1/2" LARGE HEAD SCREW - 4



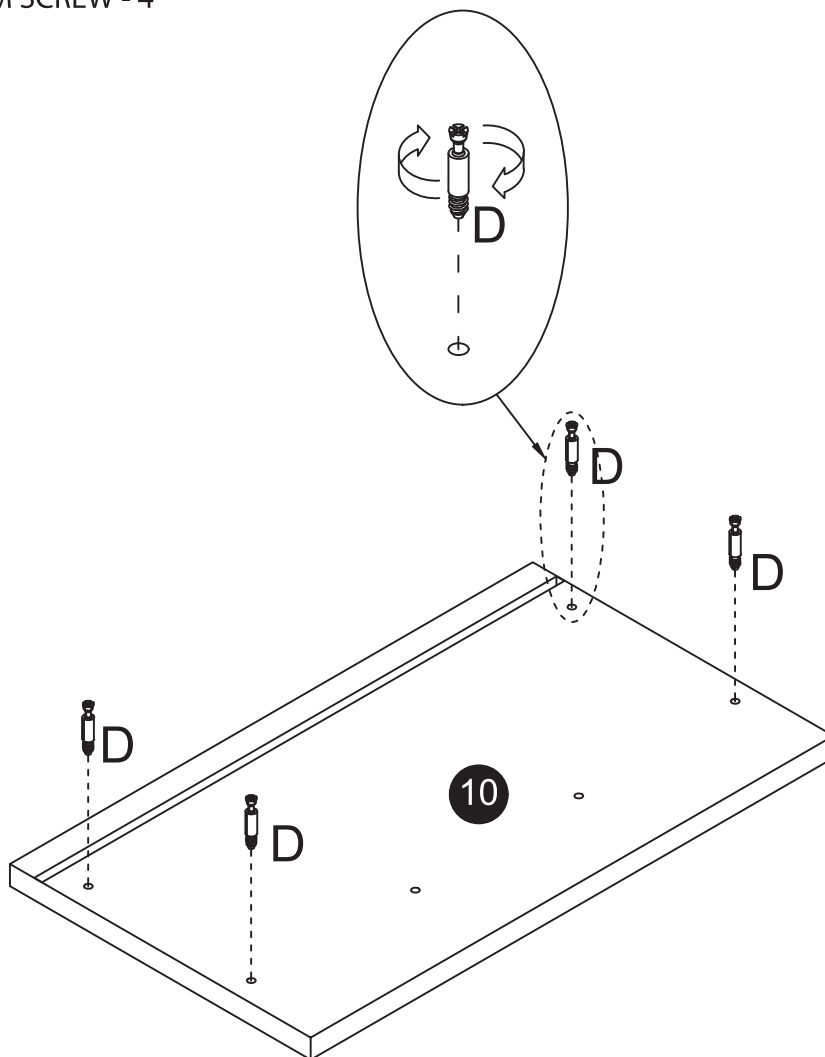
► STEP 11

Turn four SMALL CAM SCREW(D) to the Drawer front (10).

! When assembling the components, be sure to check whether the hole is consistent with the corresponding position on the manual.



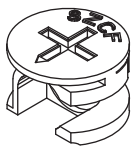
D. SMALL CAM SCREW - 4



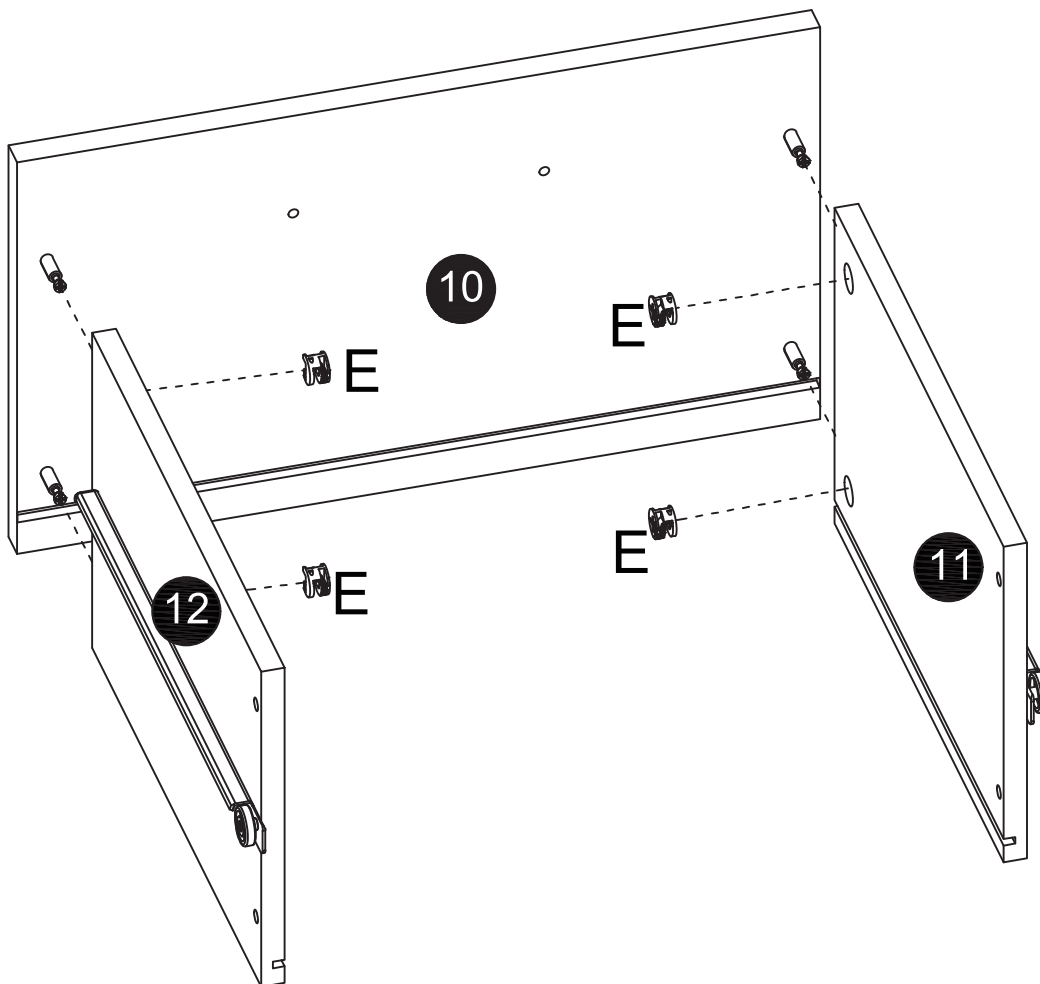
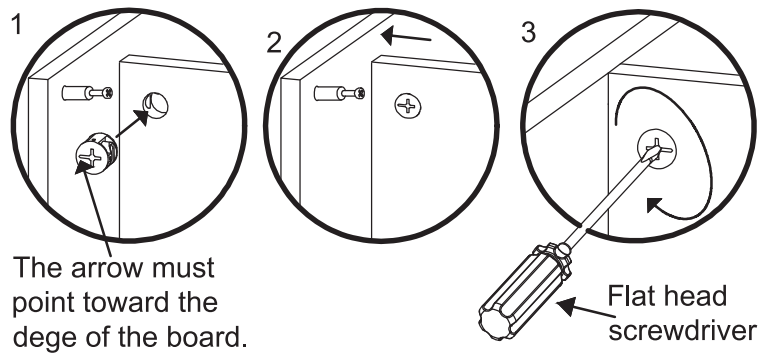
▶ STEP 12

Fasten the DRAWER SIDE(11 and 12) to the DRAWER FRONT (10), use four SMALL HIDDEN CAM (E)

! When assembling the components, be sure to check whether the hole is consistent with the corresponding position on the manual.



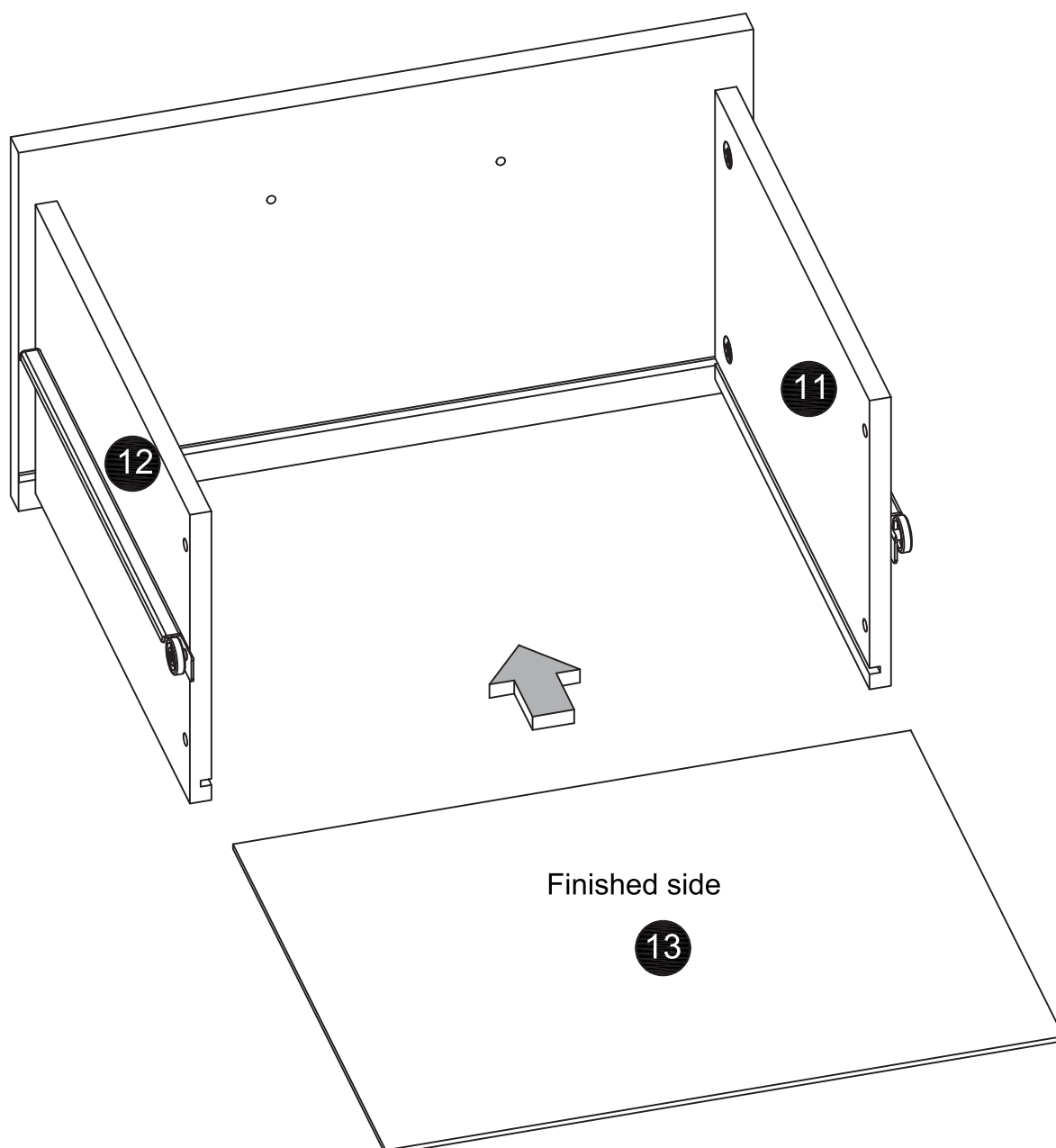
E.SMALL HIDDEN CAM - 4



► STEP 13

Insert the DRAWER BOTTOM(13) to the drawer side.

! When assembling the components, be sure to check whether the hole is consistent with the corresponding position on the manual.



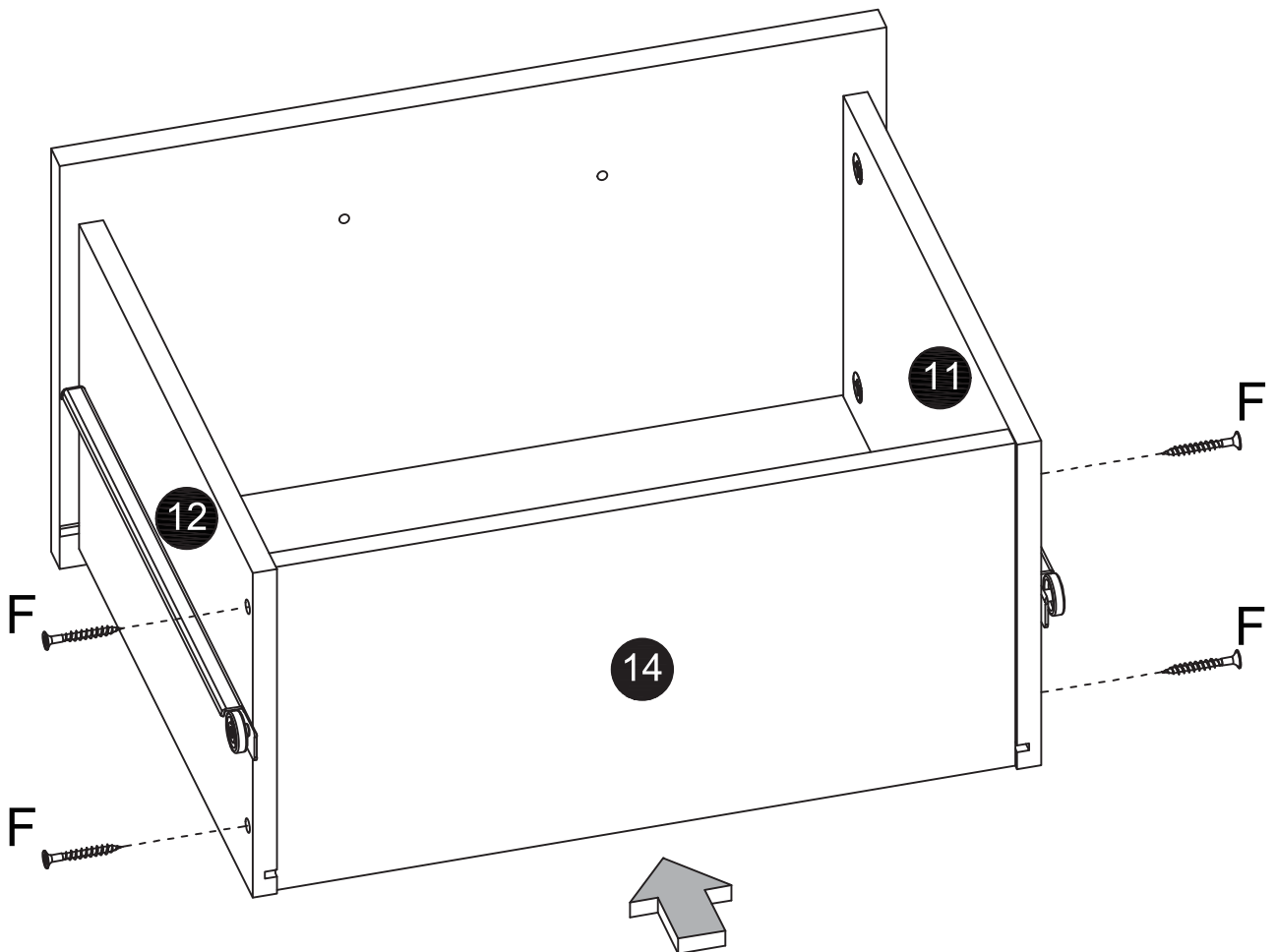
► STEP 14

Fasten the DRAWER BACK(14) to the drawer side, use four 1-1/2"FLAT HEAD SCREW(F).

! When assembling the components, be sure to check whether the hole is consistent with the corresponding position on the manual.



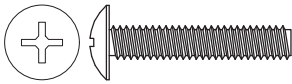
F.1-1/2"FLAT HEAD SCREW - 4



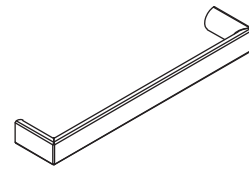
► STEP 15

Fasten the PULL(L) to the DRAWER FRONT(10), use two 7/8" MACHINE SCREW (I).

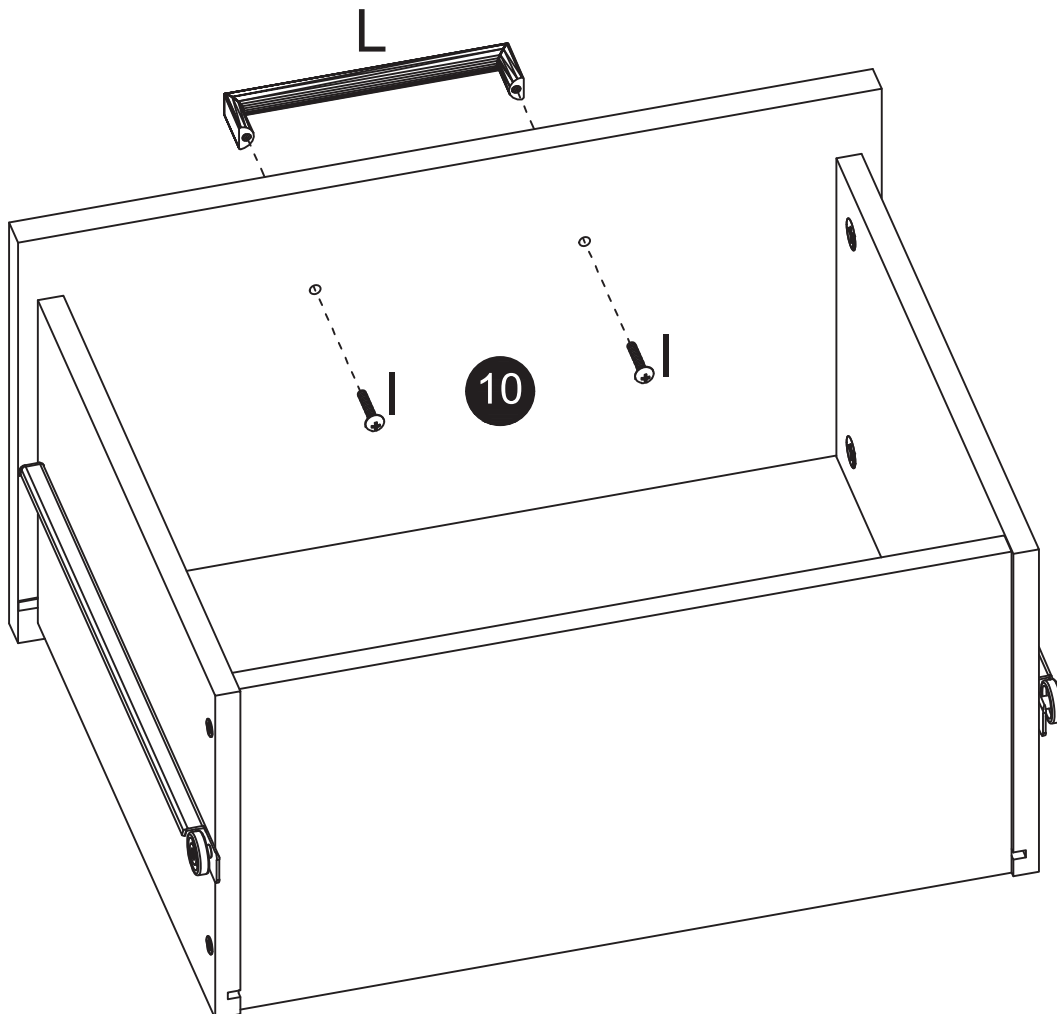
! When assembling the components, be sure to check whether the hole is consistent with the corresponding position on the manual.



I. 7/8" MACHINE SCREW - 2



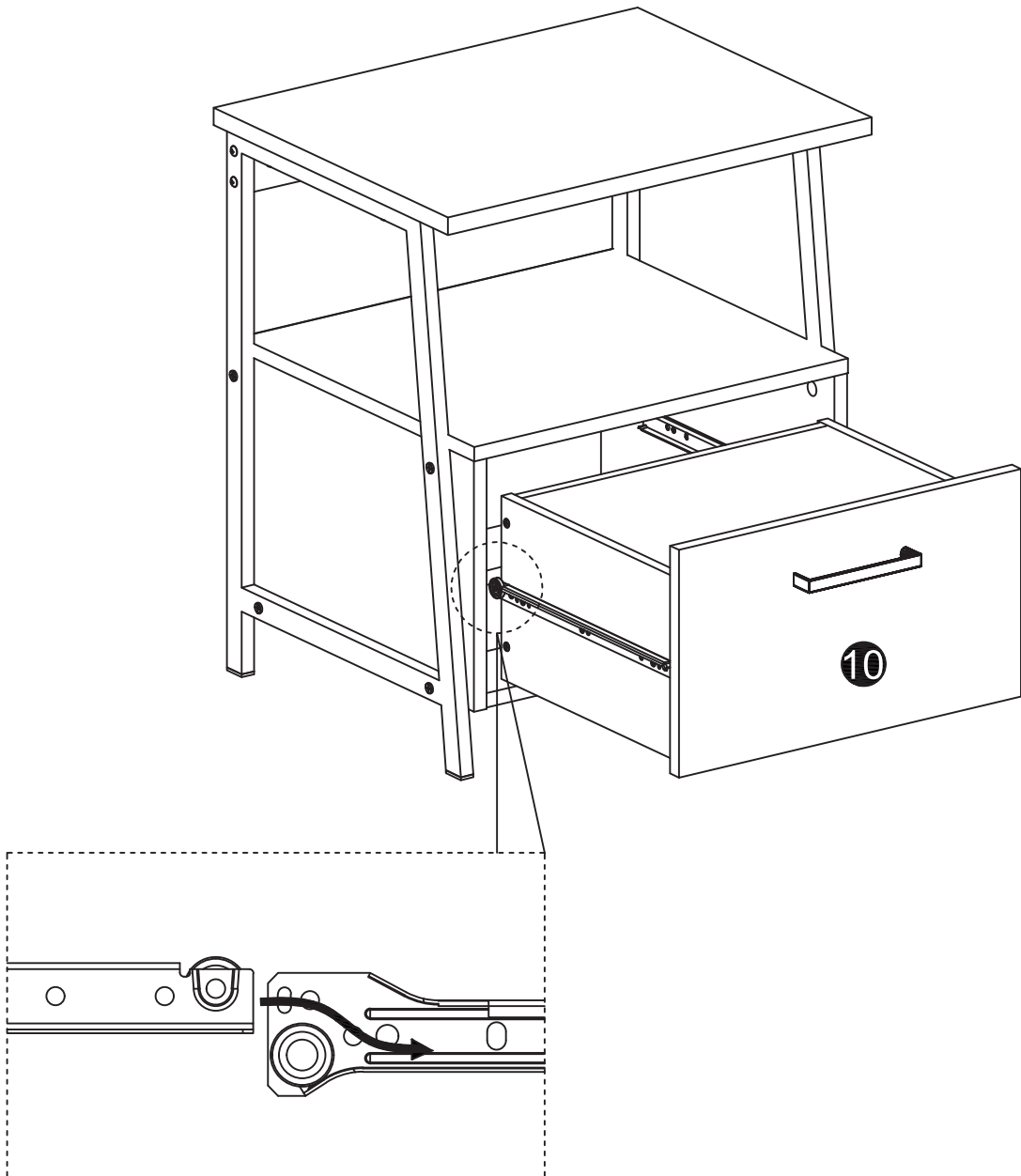
L.PULL -1



► **STEP 16**

To insert the drawer into your unit, tip the front of the drawer down and drop the rollers on the drawer behind the rollers on the unit. Lift the front of the drawer up and slide it into the unit.

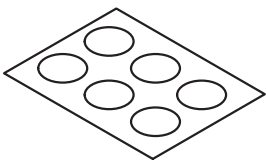
! When assembling the components, be sure to check whether the hole is consistent with the corresponding position on the manual.



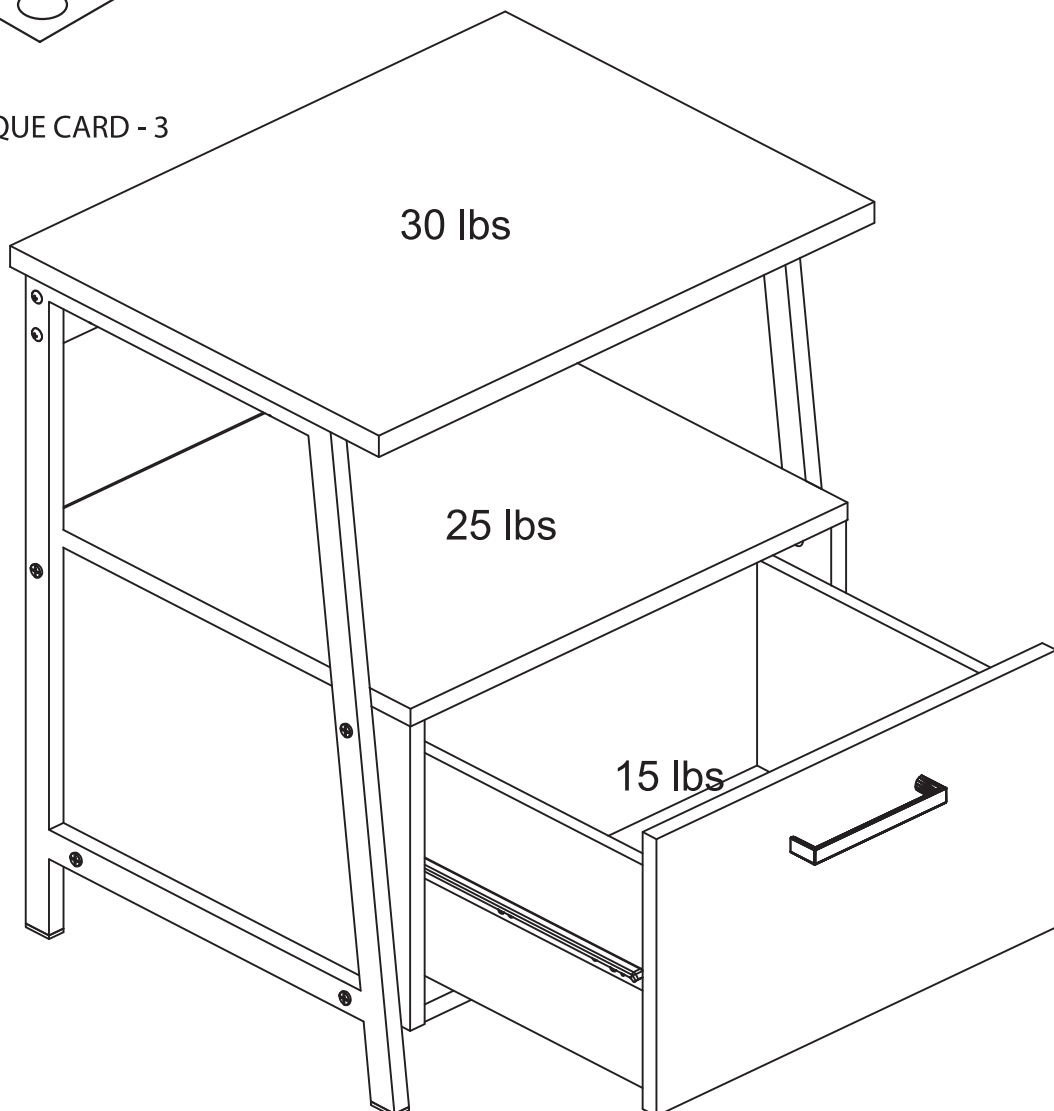
► STEP 17

Peel the COVERS from the SCREW COVER CARD (M) and stick one onto each visible SCREW head.

! When assembling the components, be sure to check whether the hole is consistent with the corresponding position on the manual.




M.APPLIQUE CARD - 3



NOTE: Please read this back page of the instruction booklet for important safety information. This completes assembly. Clean with your favorite furniture polish or a damp cloth. Wipe dry

► Einzelteile

1. TISCHPLATTE (1)
2. RAHMEN links (1)
3. RAHMEN rechts (1)
4. SCHUBLADENSEITE links (1)
5. SCHUBLADENSEITE rechts (1)
6. STÜTZEN (2)
7. BLENDE (1)
8. REGALBODEN (1)
9. RÜCKSEITE (1)
10. SCHUBLADENVORDERSEITE (1)
11. SCHUBLADE links (1)
12. SCHUBLADE rechts (1)
13. SCHUBLADENBODEN (1)
14. SCHUBLADENRÜCKSEITE (1)

 Obwohl keine Einzelteile beschriftet sind, weisen einige Teile an der Kante ein Etikett oder einen eingefärbten Buchstaben auf, um Teile voneinander unterscheiden zu können. Verwenden Sie diese Identifikation, um ähnliche Teile zu identifizieren.

► Zusatzmaterial

- A. BOLZEN KORPUSVERBINDER - 14+1
- B. EXZENTERGEHÄUSE KORPUSVERBINDER - 14+1
- C. Ø 8x30 HOLZDÜBEL - 5+1
- D. KLEINE BOLZEN KORPUSVERBINDER - 4+1
- E. KLEINE EXZENTERGEHÄUSE KORPUSVERBINDER - 4+1
- F. 1-1/2" FLACHKOPFSCHRAUBE - 4+1
- G. 1" KOPFSCHRAUBE - 8+1
- H. 1-1/2" FLACHKOPFSCHRAUBE - 4+1
- I. 7/8" SCHRAUBE - 2+1
- J. 1-1/2" KOPFSCHRAUBE - 4+1
- K. 3/4" NAGEL - 16+1
- L. GRIFF - 1
- M. SCHUTZABDECKUNGEN - 3

► SCHRITT 1

Stellen Sie das Regal auf einen Teppichboden oder auf einen leeren Karton, um Kratzer zu vermeiden. Setzen Sie 8 der BOLZEN (A) in die beiden SCHUBLADENSEITEN (4 und 5). Setzen Sie 4 HOLZDÜBEL (C) in die beiden SCHUBLADENSEITEN (4 und 5).

A. BOLZEN KORPUSVERBINDER – 8 C. HOLZDÜBEL - 4

Achten Sie beim Zusammenbau der Komponenten darauf, welche Seite mit der Kante zusammengehört.

► SCHRITT 2

Befestigen Sie die STÜTZE (6) an der linken SCHUBLADENSEITE (4), benutzen Sie dazu 4 der EXZENTERGEHÄUSE (B).

B. EXZENTERGEHÄUSE KORPUSVERBINDER - 4

Achten Sie beim Zusammenbau der Komponenten darauf, welche Seite mit der Kante zusammengehört. Der Pfeil muss auf das Brett zeigen.

► SCHRITT 3

Befestigen Sie die STÜTZE (6) an der rechten SCHUBLADENSEITE (5), benutzen Sie dazu 4 der EXZENTERGEHÄUSE (B).

B. EXZENTERGEHÄUSE KORPUSVERBINDER - 4

Achten Sie beim Zusammenbau der Komponenten darauf, welche Seite mit der Kante zusammengehört. Der Pfeil muss auf das Brett zeigen.

► SCHRITT 4

Drehen Sie 4 der BOLZEN (A) in den REGALBODEN (8).

A. BOLZEN KORPUSVERBINDER - 4

► **SCHRITT 5**

Befestigen Sie den REGALBODEN (8) an beiden SCHUBLADENSEITEN (4 und 5), benutzen Sie dazu 4 der EXZENTERGEHÄUSE (B).

B. EXZENTERGEHÄUSE KORPUSVERBINDER - 4

Achten Sie beim Zusammenbau der Komponenten darauf, welche Seite mit der Kante zusammengehört. Der Pfeil muss auf das Brett zeigen.

► **SCHRITT 6**

Befestigen Sie die RÜCKSEITE (9), benutzen Sie dazu 16 der 3/4" Nägel (K).

K. 3/4" Nagel - 16

Achten Sie beim Zusammenbau der Komponenten darauf, welche Seite mit der Kante zusammengehört.

► **SCHRITT 7**

Drehen Sie 2 der BOLZEN (A) in die TISCHPLATTE (1). Benutzen Sie 1 HOLZDÜBEL (C) für die BLENDE (7).

A. BOLZEN KORPUSVERBINDER – 2 C. HOLZDÜBEL - 1

► **SCHRITT 8**

Befestigen Sie den linken RAHMEN (2) an der linken SEITE (4) und der BLENDE (7), benutzen Sie dazu 4 der 1" KOPFSCHRAUBEN (G) und 2 der 1-1/2" FLACHKOPFSCHRAUBEN (H).

G. 1" KOPFSCHRAUBE – 4 H. 1-1/2" FLACHKOPFSCHRAUBE - 2

Achten Sie beim Zusammenbau der Komponenten darauf, welche Seite mit der Kante zusammengehört.

► **SCHRITT 9**

Befestigen Sie den rechten RAHMEN (3) an der rechten SEITE (5) und der BLENDE(7), benutzen Sie dazu 4 der 1" KOPFSCHRAUBEN (G) und 2 der 1-1/2" FLACHKOPFSCHRAUBEN (H).

G. 1" KOPFSCHRAUBE - 4 H. 1-1/2" FLACHKOPFSCHRAUBE - 2

► **SCHRITT 10**

Befestigen Sie die TISCHPLATTE (1) an den RAHMENSEITEN (2 und 3) und der BLENDE (7), benutzen Sie dazu 4 der 1-1/2" KOPFSCHRAUBEN (J) und 2 der EXZENTERGEHÄUSE (B).

J. 1-1/2" KOPFSCHRAUBE - 4 B. EXZENTERGEHÄUSE KORPUSVERBINDER -2

Der Pfeil muss auf das Brett zeigen.

► **SCHRITT 11**

Benutzen Sie 4 der kleinen BOLZEN (D) für die SCHUBLADENVORDERSEITE (10).

D. KLEINE BOLZEN KORPUSVERBINDER - 4

► **SCHRITT 12**

Befestigen Sie die beiden SCHUBLADENSEITEN (11 und 12) an der SCHUBLADENVORDERSEITE (10), benutzen Sie dazu 4 der kleinen EXZENTERGEHÄUSE (E).

E. KLEINE EXZENTERGEHÄUSE KORPUSVERBINDER - 4+1

Der Pfeil muss auf das Brett zeigen.

► **SCHRITT 13**

Setzen Sie den SCHUBLADENBODEN (13) in die SCHUBLADE ein.

► **SCHRITT 14**

Befestigen Sie die RÜCKWAND der SCHUBLADE (14) am Rest, benutzen Sie dazu 4 der 1-1/2" FLACHKOPFSCHRAUBEN (F).

F. 1-1/2" FLACHKOPFSCHRAUBEN - 4

► **SCHRITT 15**

Befestigen Sie den GRIFF (L) an der SCHUBLADENFRONT (10), benutzen Sie dazu 2 der 7/8" Schrauben (I).

I.7/8" SCHRAUBE - 2

L.GRIFF - 1

► **SCHRITT 16**

Um die Schubladen einzusetzen, kippen Sie die Vorderseite der Schublade nach unten und schieben Sie die Rollen der Schublade über die des Tisches.

► **SCHRITT 17**


Entnehmen Sie die SCHUTZABDECKUNGEN (M) und kleben Sie diese auf die sichtbaren EXZENTERGEHÄUSE.

HINWEIS: Wichtige Sicherheitsinformationen finden Sie auf den Rückseiten der Bedienungsanleitung. Damit ist die Montage abgeschlossen. Reinigen Sie das Regal mit einer Möbelpolitur oder einem feuchten Tuch. Trocken wischen nicht vergessen.

M. SCHUTZABDECKUNGEN - 3

► Identificazione parti

- 1.PARTE SUPERIORE 1)
- 2.GAMBA SINISTRA (1)
3. GAMBA DESTRA (1)
- 4.FINE SINISTRA (1)
- 5.FINE DESTRA (1)
6. SOSTEGNO (2)
7. RETRO SUPERIORE (1)
- 8.MENSOLA (1)
- 9.RETRO INFERIORE (1)
- 10.CASSETTO FRONTALE (1)
- 11.LATO CASSETTO SINISTRO (1)
- 12.DESTRO CASSETTO LATO (1)
- 13.CASSETTO INFERIORE(1)
- 14.CASSETTO DIETRO (1)

 Sebbene le parti non siano etichettate, alcune parti avranno un'etichetta o una lettera inchiostata sul bordo per aiutare a distinguere parti simili l'una dall'altra. Utilizzare questa parte di identificazione per identificare parti simili.

► Identificazione hardware

- A. UNA VITE A CAMME -14 + 1
- B. CAMERA NASCOSTA -14 + 1
- C. Ø8x30 DOWEL WOOD - 5 + 1
- D. VITE A CAMME PICCOLE - 4 + 1
- E. PICCOLA CAMERA NASCOSTA - 4 + 1
- F. 1-1 / 2 " VITE A TESTA PIATTA - 4 + 1
- G. 1 "VITE A TESTA GRANDE - 8 + 1
- H. VITE A TESTA PIATTA H.1-1 / 2 " - 4 + 1
- I.7 / 8 "VITE MACCHINA - 2 + 1
- J.1-1 / 2 "VITE A TESTA GRANDE - 4 + 1
- K. 3 / 4"VITI - 16 + 1
- L. MANIGLIA -1
- M.CARTA .APPLIQUE – 3

▶ PASSO 1

Montare l'unità su un pavimento in moquette o sul cartone vuoto per evitare di graffiarla o di graffiare il pavimento.

Ruotare otto VITI (A) verso le FINI (4 e 5).

Inserire quattro TASSELLI DI LEGNO (C) nelle FINI (4 e 5).

A. VITI -8

C. TASSELLI IN LEGNO - 4

Quando si assemblano i componenti, assicurarsi di controllare da che parte è finito il bordo.

▶ PASSO 2

Fissare il SOSTEGNO (6) alla FINE SINISTRA (4), utilizzare quattro VITI (B). -4

Quando si assemblano i componenti, assicurarsi di controllare da che parte è finito il bordo.

La freccia deve puntare verso il margine della tavola.

Cacciavite a testa piatta

▶ PASSO 3

Fissare il SOSTEGNO (6) alla FINE DESTRA (5), utilizzare quattro VITI (B). -4

Quando si assemblano i componenti, assicurarsi di controllare da che parte è finito il bordo.

La freccia deve puntare verso il margine della tavola.

Cacciavite a testa piatta

▶ PASSO 4

Ruotare quattro VITI (A) su una MENSOLA (8).

VITI (A) -4

▶ PASSO 5

Fissare la mensola (8) alle FINI (4 e 5), utilizzare quattro VITI (B).

Quando si assemblano i componenti, assicurarsi di controllare da che parte è finito il bordo.

La freccia deve puntare verso il margine della tavola.

Cacciavite a testa piatta

▶ PASSO 6

Fissare il RETRO INFERIORE (9), utilizzare sedici 3 / 4"NALL (K).

K. 3 / 4"NALL - 16

Quando si assemblano i componenti, assicurarsi di controllare da che parte è finito il bordo.

▶ PASSO 7

Ruotare due VITI (A) verso l'alto (1)

Inserire un TASSELLO IN LEGNO (C) nella PARTE SUPERIORE (7).

VITI-2

TASSELLI DI LEGNO -2 C –

▶ PASSO 8

Fissare la GAMBA SINISTRA (2) a FINE SINISTRA (4) e alla SCHIENA SUPERIORE (7), utilizzare quattro VITI testa grande

VITE (G) e due VITI A TESTA PIATTA 1-1 / 2 " (H).

G.1 "VITE A TESTA GRANDE - 4 H.1-1 / 2 " VITE A TESTA PIATTA - 2

Quando si assemblano i componenti, assicurarsi di controllare da che parte è finito il bordo.

▶ PASSO 9

Fissare la GAMBA DESTRA (3) alla FINE DESTRA (5) e allo SCHIENALE SUPERIORE (7), utilizzare quattro VITI G) e due VITI(H).

G.1 "VITE A TESTA GRANDE - 4

VITE A TESTA PIATTA H.1-1 / 2 " - 2

▶ PASSO 10

Fissare LA PARTE SUPERIORE (1) alle GAMBE (2 e 3) e ALLO SCHIENALE SUPERIORE (7), utilizzare quattro TESTE GRANDI 1-1 / 2 "

VITE (J) e due VITI (B).

J.1-1 / 2 "VITE A TESTA GRANDE - 4

B VITI CAM NASCOSTE -2

La freccia deve puntare verso il margine della tavola.

Cacciavite a testa piatta

▶ **PASSO 11**

Ruotare quattro VITI PICCOLE (D) in avanti sul cassetto (10).

D VITE A CAMME PICCOLE - 4

STEP 12

▶ **PASSO 12**

Fissare il CASSETTO LATERALE DESTRO (11 e 12) al CASSETTO FRONTALE (10),
utilizzare quattro VITI (E)

E. VITI - 4

La freccia deve puntare verso il bordo della tavola.

Cacciavite a testa piatta

▶ **PASSO 13**

Inserire il CASSETTO INFERIORE (13) sul lato del cassetto.

▶ **PASSO 14**

Fissare il CASSETTO RETROK (14) sul lato del cassetto,
utilizzare quattro VITI' (F).

VITI (F) – 4

▶ **PASSO 15**

Fissare il PULL (L) al CASSETTO FRONTALE (10),
utilizzare due VITI'(I).

VITI (I)- 2

L. VITE - 1

▶ **PASSO 16**

Per inserire il cassetto nell'unità, inclinare verso il basso la parte anteriore del cassetto e rilasciare i rulli sul cassetto dietro i rulli sull'unità. Sollevare la parte anteriore del cassetto e farlo scorrere nell'unità.

► PASSO 17

Sbucciare i COPERCHI dalla CARTA PROTETTIVA SUPERIORE (M) e attaccarne uno su ciascuno visibile Testa a VITE.

NOTA: leggere questa pagina posteriore del libretto di istruzioni per importanti informazioni sulla sicurezza.

Questo completa l'assemblaggio. Pulisci con il tuo smalto per mobili preferito o un panno umido.

Asciugare

CARTA.APPLIQUE - 3

► **Identificación de partes**

1. TAPA (1)
2. PATA IZQUIERDA (1)
3. PATA DERECHA (1)
4. TERMINAL IZQUIERDO (1)
5. TERMINAL DERECHO (1)
6. REFUERZO (2)
7. TRASERA SUPERIOR (1)
8. ESTANTE (1)
9. TRASERA INFERIOR (1)
10. FRONTAL DE CAJÓN (1)
11. LATERAL IZQUIERDO CAJÓN (1)
12. LATERAL DERECHO CAJÓN (1)
13. BAJO CAJÓN (1)
14. TRASERA CAJÓN (1)



Si bien no se etiquetan las partes, algunas de ellas tendrán una etiqueta o una letra entintada en el borde para ayudar a distinguir partes similares entre sí. Use esta identificación de parte para ayudar a identificar partes similares.

► **Identificación de tornillería / hardware**

- A. PERNO -14+1
- B. EXCÉNTRICA -14+1
- C. ESPIGA DE MADERA Ø8x30 - 5+1
- D. PERNO PEQUEÑO - 4+1
- E. EXCÉNTRICA PEQUEÑA - 4+1
- F. TORNILLO DE CABEZA PLANA 1-1/2" - 4+1
- G. TORNILLO DE CABEZA GRANDE 1" - 8+1
- H. TORNILLO DE CABEZA PLANA 1-1/2" - 4+1
- I. TORNILLO PARA METAL 7/8" - 2+1
- J. TORNILLO DE CABEZA GRANDE 1-1/2" - 4+1
- K. CLAVO 3/4" - 16+1
- L. TIRADOR -1
- M. TARJETA DE EMBELLECEDORES (TAPA TORNILLOS) - 3

▶ PASO 1

Monte su producto sobre un suelo alfombrado o sobre la caja de cartón vacía para evitar rayar el producto o el suelo.

Gire ocho PERNO (A) al TERMINAL (4 y 5).

Inserte cuatro ESPIGA DE MADERA (C) al TERMINAL (4 y 5).

A. PERNO -8 C. ESPIGA DE MADERA - 4

Al ensamblar los componentes, asegúrese de verificar qué lado está terminado.

▶ PASO 2

Fije el REFUERZO (6) al TERMINAL IZQUIERDO (4), use cuatro EXCÉNTRICA (B).

B. EXCÉNTRICA -4

Al ensamblar los componentes, asegúrese de verificar qué lado está terminado.

La flecha debe apuntar hacia el borde del tablero.

Destornillador de cabeza plana

▶ PASO 3

Fije el REFUERZO (6) al TERMINAL DERECHO (5), use cuatro EXCÉNTRICA (B).

B. EXCÉNTRICA -4

Al ensamblar los componentes, asegúrese de verificar qué lado está terminado.

La flecha debe apuntar hacia el borde del tablero.

Destornillador de cabeza plana

▶ PASO 4

Gire cuatro PERNO (A) al ESTANTE (8).

A. PERNO -4

▶ PASO 5

Fije el ESTANTE (8) al TERMINAL (4 y 5), use cuatro EXCÉNTRICA (B).

B. EXCÉNTRICA -4

Al ensamblar los componentes, asegúrese de verificar qué lado está terminado.
La flecha debe apuntar hacia el borde del tablero.

Destornillador de cabeza plana

▶ PASO 6

Fije la TRASERA INFERIOR (9), use dieciséis CLAVO 3/4" (K).

K. CLAVO 3/4" - 16

Al ensamblar los componentes, asegúrese de verificar qué lado está terminado.

▶ PASO 7

Gire dos PERNO (A) en la TAPA (1)

Inserte una ESPIGA DE MADERA (C) a la TRASERA SUPERIOR (7).

A. PERNO -2

C. ESPIGA DE MADERA - 1

▶ PASO 8

Fije la PATA IZQUIERDA (2) al TERMINAL IZQUIERDO (4) y TRASERA SUPERIOR (7), use cuatro TORNILLO DE CABEZA GRANDE 1" (G) y dos TORNILLO DE CABEZA PLANA 1-1/2" (H).

G. TORNILLO DE CABEZA GRANDE 1" - 4

H. TORNILLO DE CABEZA PLANA 1-1/2" - 2

Al ensamblar los componentes, asegúrese de verificar qué lado está terminado.

▶ PASO 9

Fije la PATA DERECHA (3) al TERMINAL DERECHO (5) and TRASERA SUPERIOR (7), use cuatro TORNILLO DE CABEZA GRANDE 1" (G) y dos TORNILLO DE CABEZA PLANA 1-1/2" (H).

G. TORNILLO DE CABEZA GRANDE 1" - 4

H. TORNILLO DE CABEZA PLANA 1-1/2" - 2

▶ PASO 10

Fije la TAPA (1) a la PATA (2 y 3) y TRASERA SUPERIOR (7), use cuatro TORNILLO DE CABEZA GRANDE 1-1/2" (J) y dos EXCÉNTRICA (B).

J. TORNILLO DE CABEZA GRANDE 1-1/2"- 4

B. EXCÉNTRICA -2

La flecha debe apuntar hacia el borde del tablero.

Destornillador de cabeza plana

▶ PASO 11

Gire cuatro PERNO PEQUEÑO (D) al FRONTAL DE CAJÓN (10).

D. PERNO PEQUEÑO - 4

▶ PASO 12

Fije el LATERAL CAJÓN (11 y 12) al FRONTAL DE CAJÓN (10), use cuatro EXCÉNTRICA PEQUEÑA (E)

E. EXCÉNTRICA PEQUEÑA - 4

La flecha debe apuntar hacia el borde del tablero.

Destornillador de cabeza plana

▶ PASO 13

Inserte el BAJO CAJÓN (13) en el LATERAL CAJÓN (11 y 12).

▶ PASO 14

Fije la TRASERA CAJÓN (14) al LATERAL CAJÓN,
use cuatro TORNILLO DE CABEZA PLANA 1-1/2" (F).

F. TORNILLO DE CABEZA PLANA 1-1/2" - 4

▶ PASO 15

Fije el TIRADOR (L) en el FRONTAL DE CAJÓN (10),
use dos TORNILLO PARA METAL 7/8" (I).

I. TORNILLO PARA METAL 7/8" - 2

L. TIRADOR - 1

▶ PASO 16

Para insertar el cajón en su unidad, incline la parte delantera del cajón hacia abajo y deje caer los rodillos del cajón detrás de los rodillos de la unidad. Levante la parte frontal del cajón y deslícelo hacia la unidad.

▶ PASO 17

Despegue las CUBIERTAS/EMBELLECEDORES de la TARJETA DE EMBELLECEDORES (M) y pegue una en cada cabeza del TORNILLO visible.

NOTA: Por favor, lea las páginas posteriores del folleto de instrucciones para obtener información importante sobre seguridad.

Esto completa el montaje. Limpie con su limpiador de muebles favorito o un paño húmedo. Secar.

M. TARJETA DE EMBELLECEDORES - 3

Warning

Please use your furniture correctly and safely. Improper use can cause safety hazards, or damage to your furniture or household items. Carefully read the following chart.

Look out for:	What can happen:	How to avoid the problem:
Overloaded shelves.	Risk of injury. Top-heavy furniture can tip over. Overloaded shelves can break.	Never exceed the weight limits shown in the instructions.
Placing TVs on furniture items that are not designed to support a television is hazardous.	Risk of injury or death. TVs can be very heavy. Plus the weight and location of the picture tube tends to make TVs unbalanced and prone to tipping forward.	Work from bottom to top when loading shelves. Place the heavier items on the lower shelves. This product is not designed to support a television.