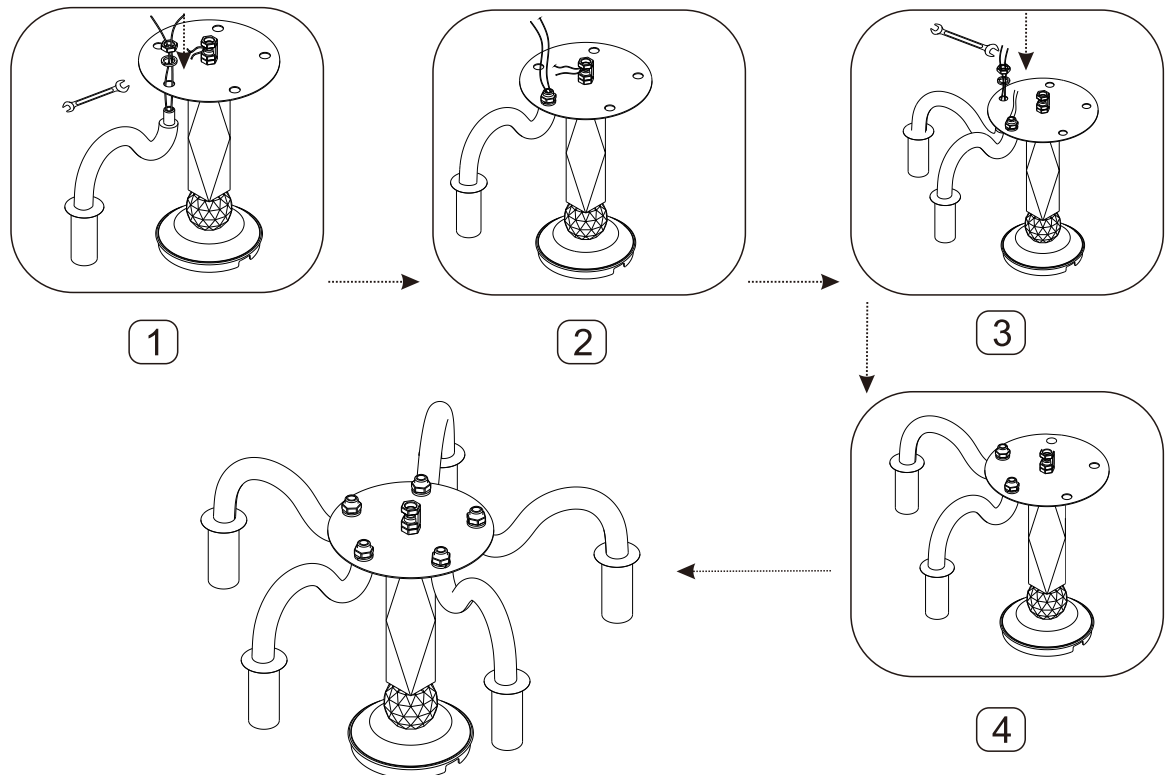
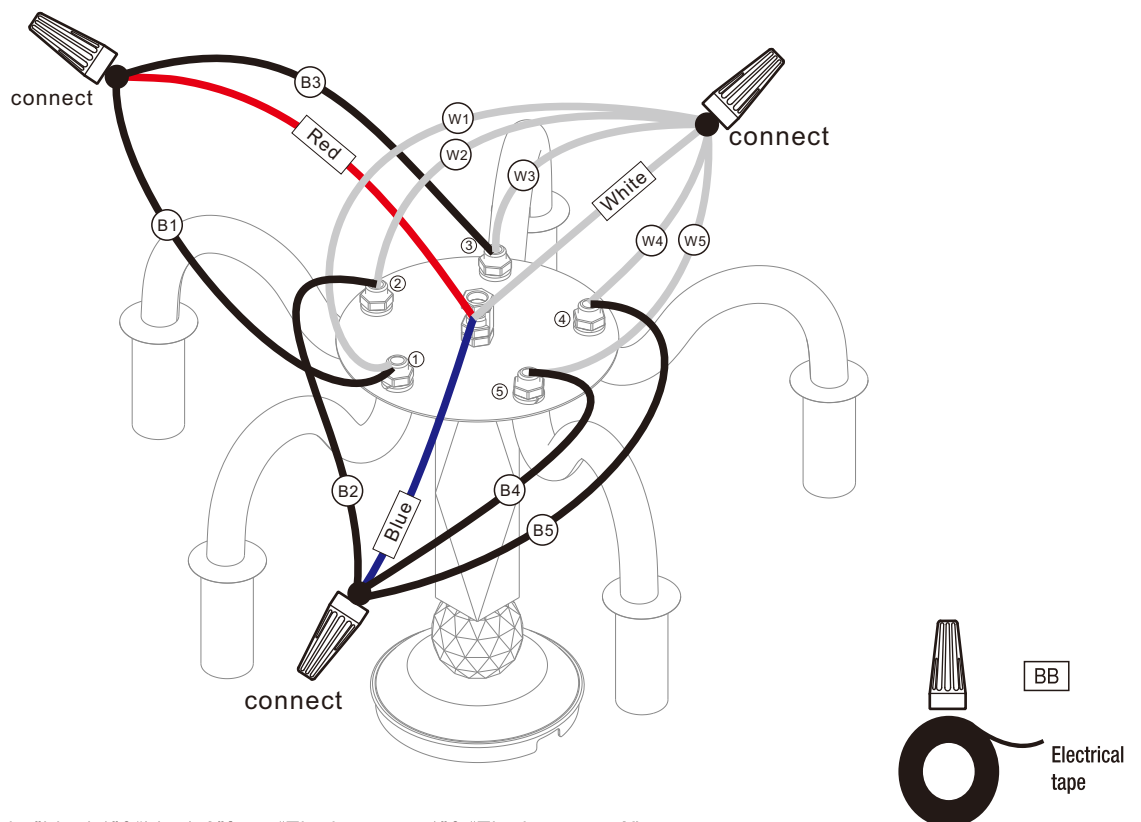


# Assembly – Hanging the Fan(continued)

## 1.The lamp body assembly



- 1.Insert one end of the lamp arm band screw into the lamp body and tighten with the nut.
- 2.Repeat the previous step and install the remaining four light arms into the lamp body in turn.
- 3.Then adjust the Angle of the arm so that the five arms are spread out in five directions.
- 4.Finally, tighten the nut completely.



- 1.The Lamp body"RED"wire to the"black 1"&"black 3"from "The lamp arm1" & "The lamp arm3"
- 2.The Lamp body"BLUE"wire to the "black2"&"black4"&"black5"from "The lamp arm2"& "The lamp arm4" & "The lamp arm5"
- 3.The Lamp body"WHITE"wire to the "WHITE1&2&3&4&5" from the lamp arm