

CAPSTONE - TAUPE

The classic pied de poule pattern, created by interweaving the warp threads, was widely used by the British aristocracy, but was immortalized in the fashion world through the French Coco Chanel, who used it in her tweed suits, revolutionizing the clothing of the century 20.

The CAPSTONE collection reminds us of the sophistication of the time, but offers us a modern touch to a favorite classic, through the combination of contemporary colors with timeless design. They are very structured flatweaves, translating into pieces of extreme quality, resistance and unmatched comfort.

PRODUCT DETAILS

Catalog Code: CAPSTONE - CP01 - TAUPE

Construction: Hand Woven

WeiCPh: 2600g | **Pile Height:** Flatweave

Composition: 100% Wool

Origin: India

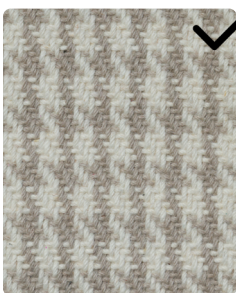
Sizes



CARE INSTRUCTIONS

Sanitize regularly with the use of vacuum cleaner at low power. In case of stain, dry it immediately and clean with mild soap mixed with equal parts of white vinegar and water. Specialized washing is recommended once a year or when necessary.

AVAILABLE COLORS



CP01 - TAUPE



CP02 - GREY

View More Details