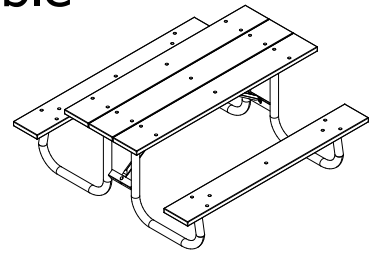


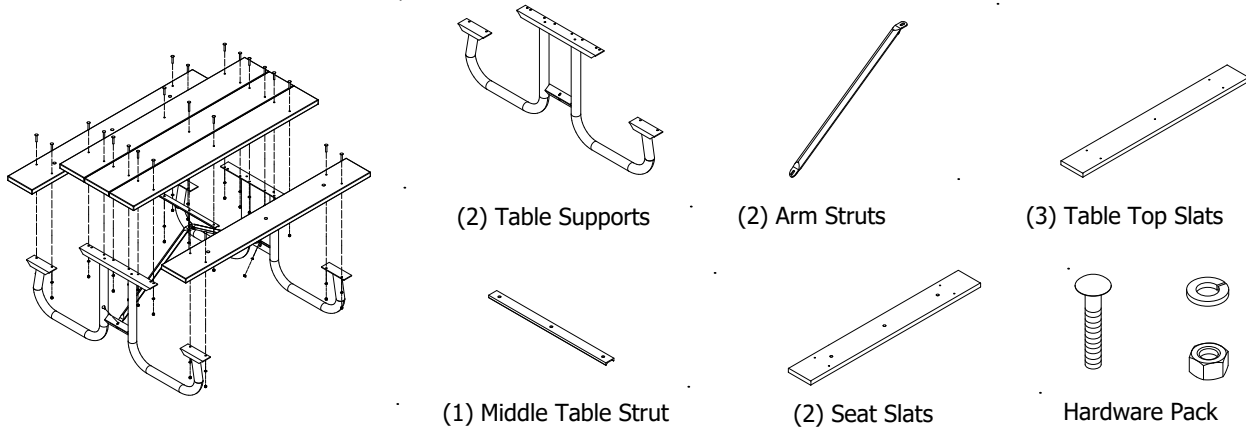
6 FT Galvanized Picnic Table

Assembly Instructions



Tools for Assembly: Ratchet and 9/16 Socket
9/16 Boxed or Open End Wrench

Components



Step by Step Assembly

Before you begin: Check components to verify all are included. Assembly requires two people and must be performed on a flat and even surface. Do not overtighten hardware as damage can occur.

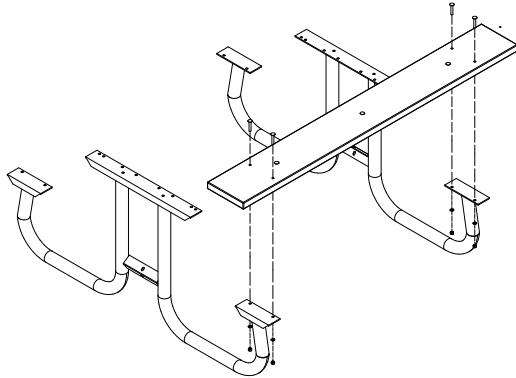


Illustration 'A'

Step 1

Position the table supports upright and parallel to each other on a flat surface. Lay a seat slat across the mounting surface of each support with the angle brace (mounted under seat) facing down. Align the pre-drilled holes in the seat with the mounting holes in each support. Attach using 2 1/4" long carriage bolts, lock washers and hex nuts. See Illustration 'A'. Repeat for the other side.

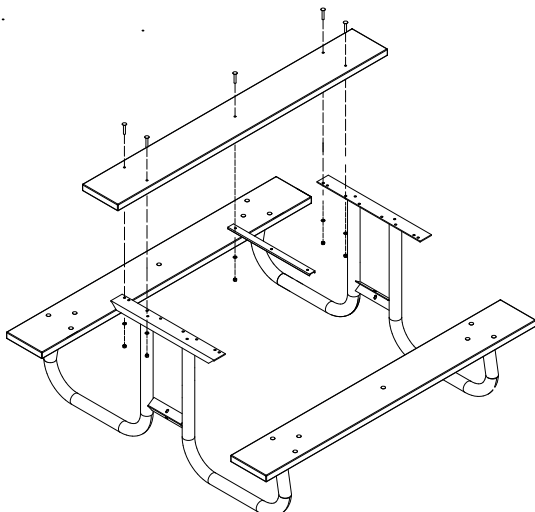
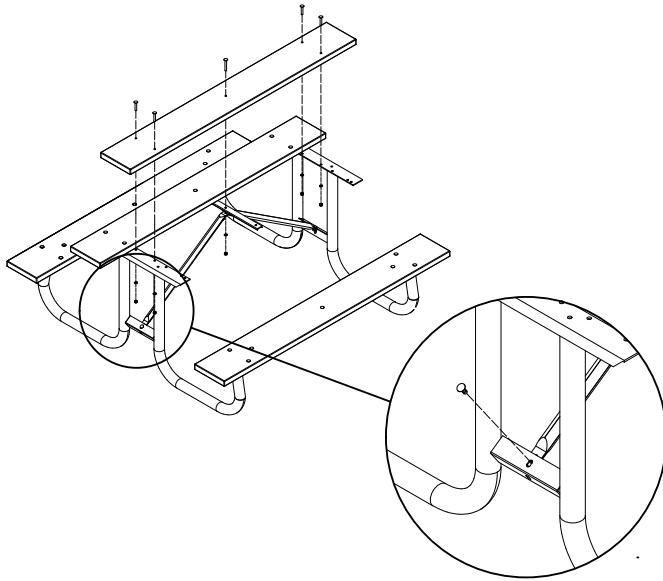


Illustration 'B'

Step 2

Attach one outside edge table top slat to the supports using 2 1/4" long carriage bolts, lock washers and hex nuts. Place middle table strut with flat side facing up and perpendicular to the underneath side of previously installed table top board, attach using 2 1/4" long carriage bolt, lock washer and hex nut as shown in Illustration 'B'

Step by Step Assembly Continued



Connection Detail

Illustration 'C'

Step 3

Attach center table top slat to supports using 2 1/4" long carriage bolts, lock washers and hex nuts. Position both arm struts on the middle table strut, attach to strut and middle slat using a 3" long carriage bolt, flat washer, lock washer and hex nut, leave loosely tightened. See Illustration 'C'. Attach both support arms to lower table support bracket using 1" hex bolt, flat washer, lock washer and hex nut, see connection detail in Illustration 'C'.

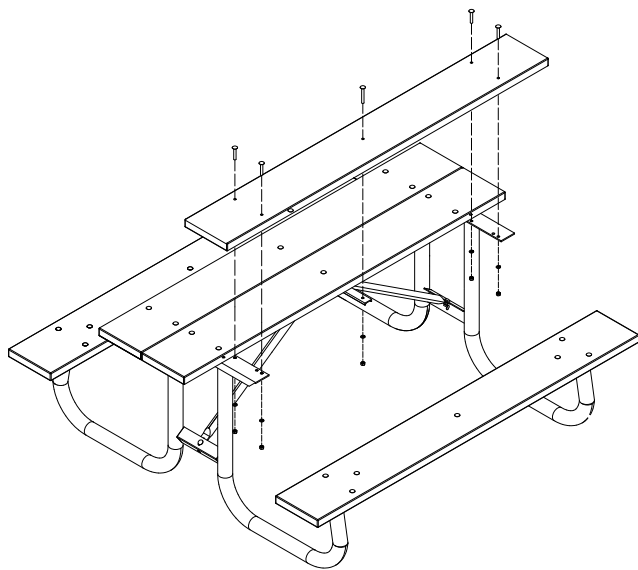


Illustration 'D'

Step 4

Attach the remaining table top slat to the supports and middle strut using 2 1/4" long carriage bolts, lock washers and hex nuts. See Illustration 'D'. All hardware can now be tightened.

Cleaning Tips

Frog Furnishings products are durable and designed to last a lifetime, like most things that spend the majority of time outdoors, sometimes they need a little cleaning. In most cases, all a Frog product requires is mild dish soap, a bucket of warm water and a clean cloth. Apply the soapy mixture to scrub away the dirt and then rinse with water. If you have some stubborn dirt down in the grooves and divots, mix 1 part bleach to 2 parts water, apply with your clean cloth, scrub with a soft bristle brush if needed and then rinse.