

SPECIFICATION

Applicable Model



OVERALL SIZE:

50cm x 48cm x 82cm

FEATURES:

Push-down Drain

 Estimated Time for Assembly
30 mins

Caution:

1. This product is designed for home use and not intended for commercial use.
2. This product contains small components. Please ensure that they are kept away from small children.
3. Be careful when using power tools to assemble your furniture. Power tools may strip or damage the parts.

IDENTIFY PARTS

1



Soap Sink x1

2



Iron Leg x4

3



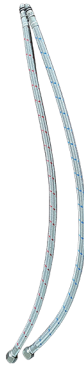
Push-Down Drain x1

4



Faucet x1

5



Hot & Cold Hose x1

6



L-shaped Leveling Pad x4

7



L-shaped Hex Wrench x1

8



M6 Screw x12

9



Spring Washer x12

10



Flat Washer x12

11



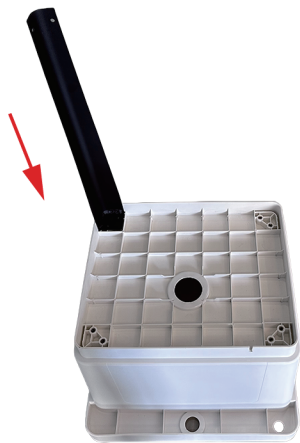
M6 Nut x4

ASSEMBLY STEPS

STEP 1

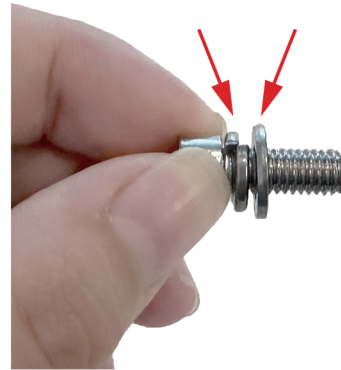
Place the soap sink upside down and then insert the iron legs into the grooves on the bottom of the soap sink.

The sequence for M6 screw assembly is as follows: first the spring washer, and then the flat washer.



Spring Washer

Flat Washer



STEP 2

Align the screws with the holes, and then use a L-shaped hex wrench to secure and tighten them.

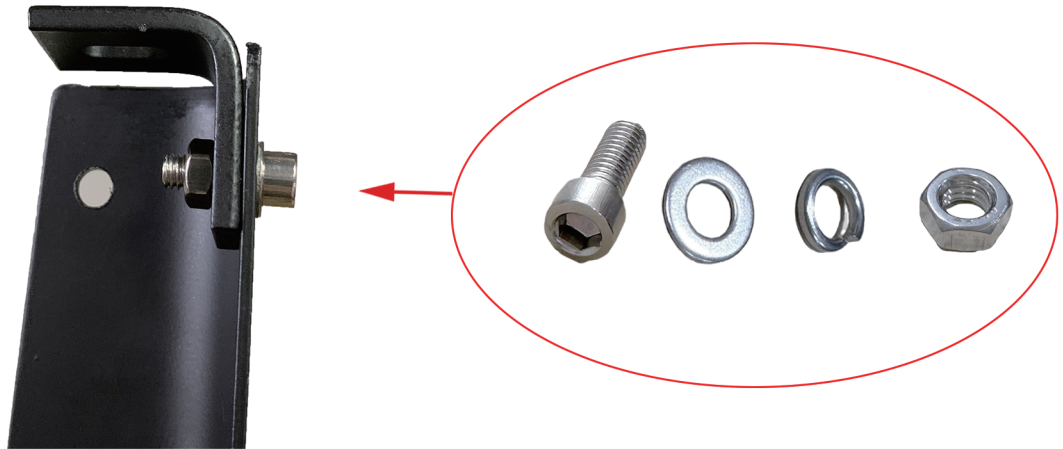
Turn the inverted sink upright, with the main opening facing upwards.



ASSEMBLY STEPS

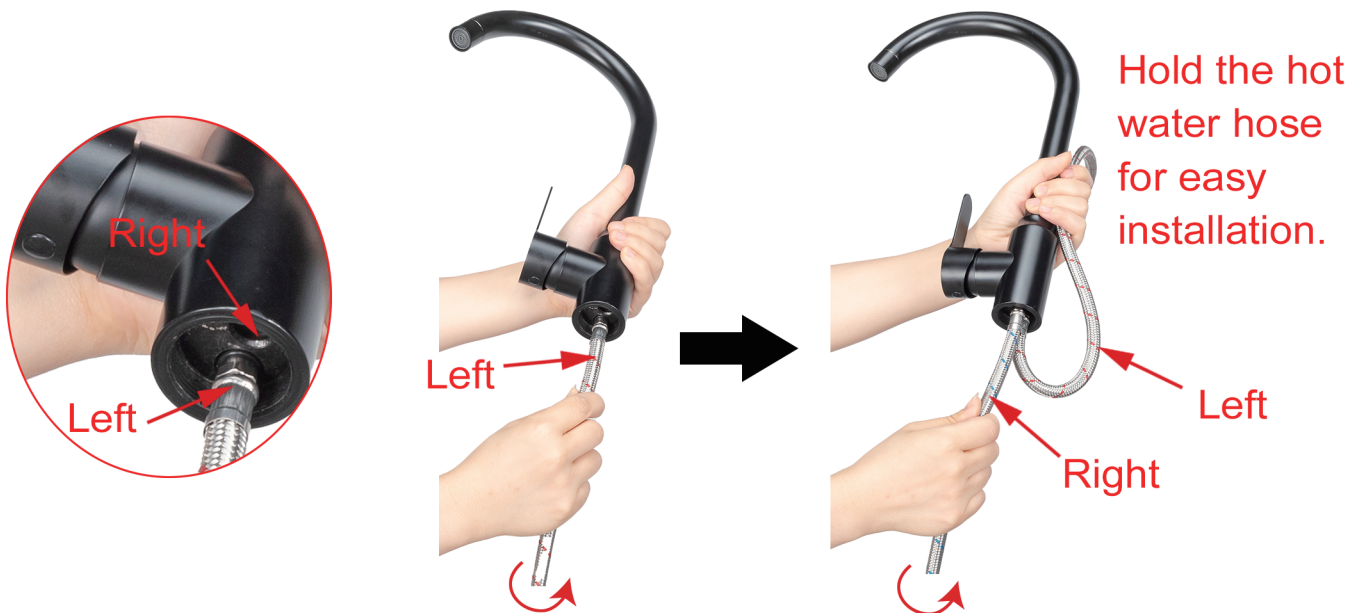
STEP 3

Attach the L-shaped leveling pad if needed



STEP 4

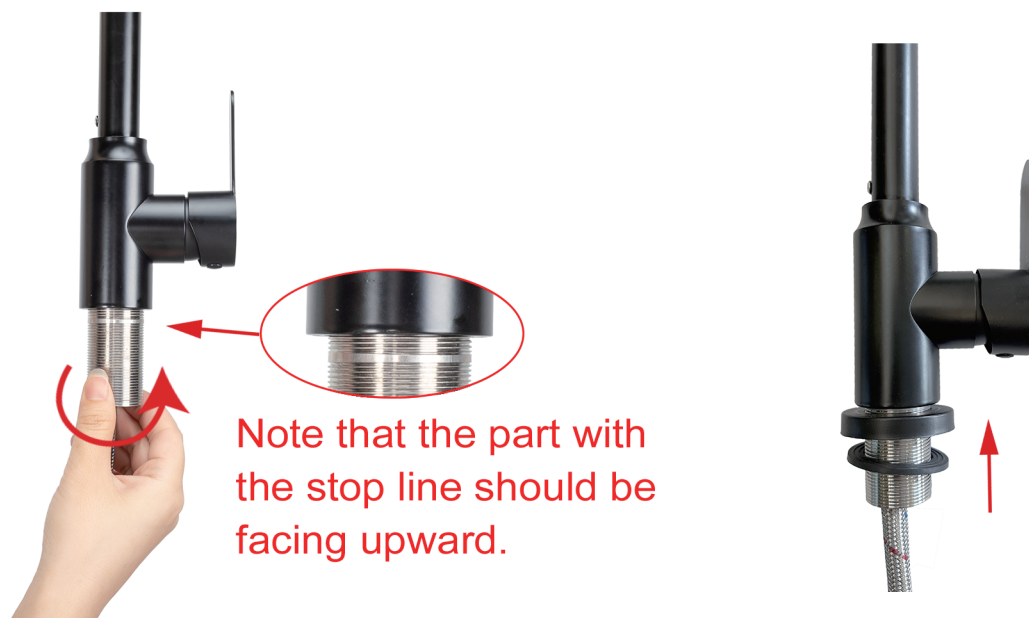
Screw the hot water hose (red) into the hole on the left side of the faucet
Screw the cold water hose (blue) into the hole on the right side of the faucet



ASSEMBLY STEPS

STEP 5

Thread the metal base through the hot and cold water hoses and screw it onto the bottom of the faucet.



STEP 6

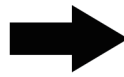
Assemble the rest parts accordingly.



ASSEMBLY STEPS

STEP 7

Disassemble the Push-down Drain assembly, place the small components into the drain assembly.



STEP 8

Hold the base firmly and tighten it with a 15mm wrench (the wrench shown is not included in the kit).
Install the strainer.



ASSEMBLY STEPS

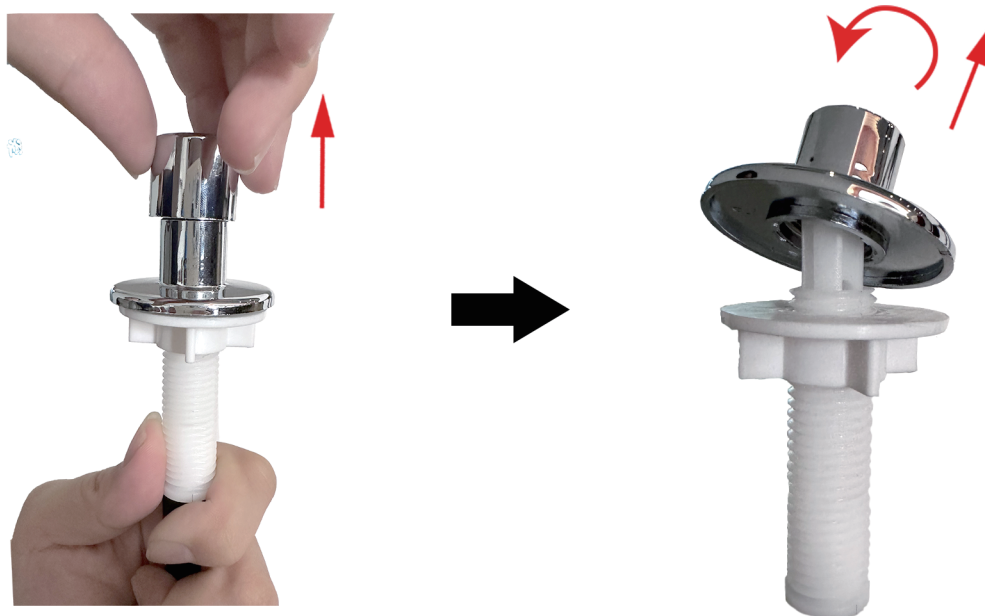
STEP 9

Insert the push-down drain assembly's line into the groove on the side bottom of the soap sink.



STEP 10

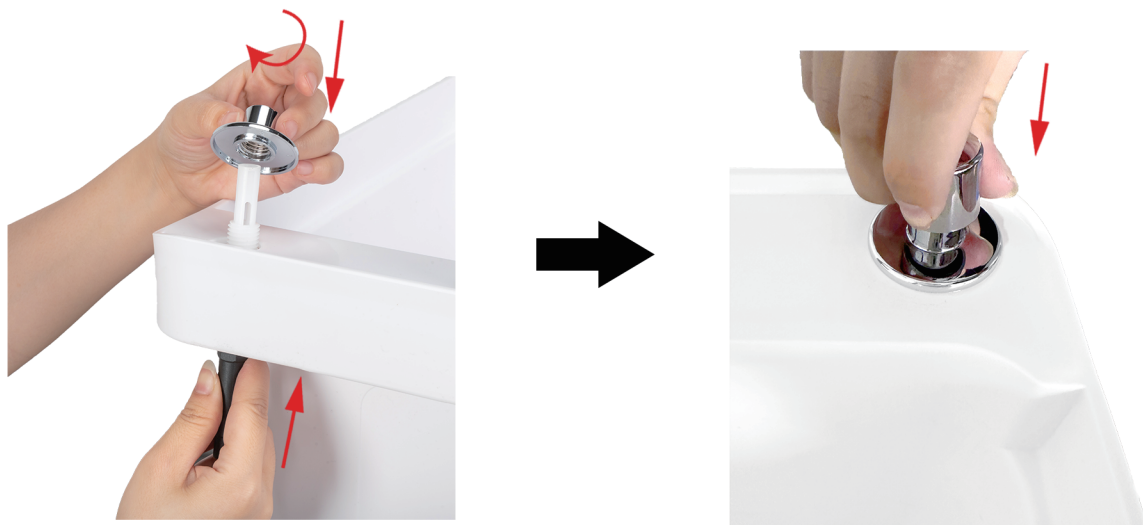
First, remove the button.
Then unscrew the switch base.



ASSEMBLY STEPS

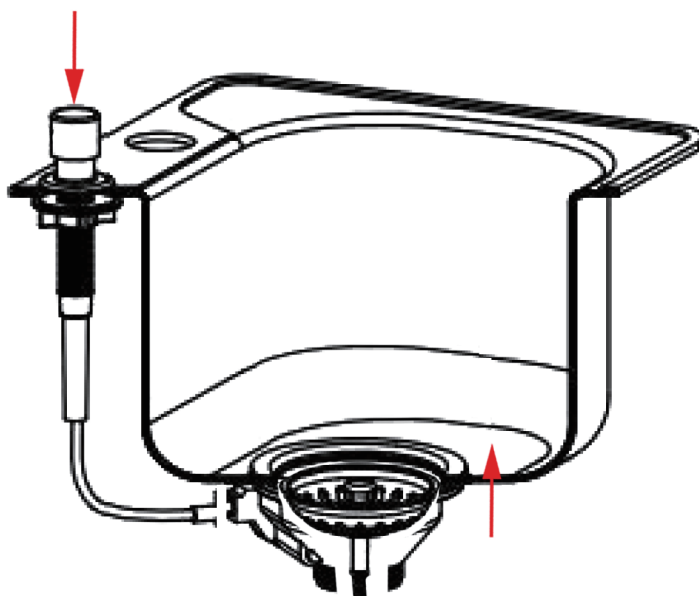
STEP 11

Secure the switch onto the soap sink.
Reattach the button onto the switch base.



STEP 12

Test the push-down drain assembly by pressing the button, ensuring that the pressing action is smooth and that the strainer can move up and down smoothly.



ASSEMBLY STEPS

STEP 13

Adjustment of the strainer (seal). By changing the height to ensure the sealing of the soap sink.

