

# Assembly Instructions

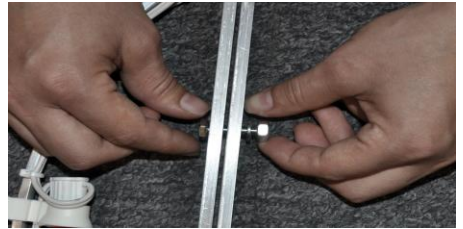
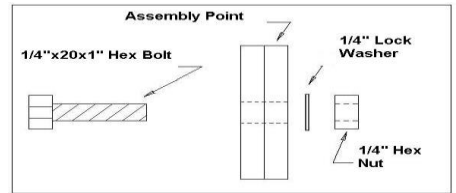
## 1 Before you begin

- Decide on the location of your display. Unpacking and assembling your display near its final location will reduce the effort required to install it.
- Unpack the display and all extra components from the carton.
- Carefully review all instructions prior to assembly.

## 2 Set Up

- Lay the display flat on the ground with each section in its proper position to bolt together. See additional insert for assembly guidelines if applicable.
- Using a standard wrench and/or pliers (not included), bolt each section together using the hardware supplied in your *Setup Bag* (see [Figure 1](#)). **BE SURE THE LOCK WASHER IS UNDER THE NUT** when tightening. Tighten each nut firmly.
- Check that no wires have been pinched while assembling the display.
- Plug each section of the display together.

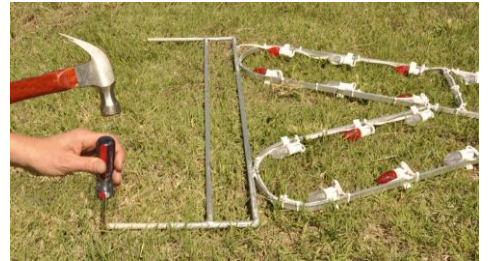
*Figure 1*



**Note:** We highly recommend that you plug your display in and check for bulbs that have become loose in their socket during shipping or between seasons. If a bulb does not light see the Troubleshooting guide on back side of this page.

## 3 Ground Mount (skip to Step 5 if hanging your display)

**Do Not Force Your Display Into the Ground!** Lay your display flat on the ground and create pilot holes in the ground using a hammer and screwdriver. Then, raise your display frame and gently press your display stakes into each hole. **Failure to create pilot holes for your stakes may cause your display frame to bend or break and will void your warranty.**

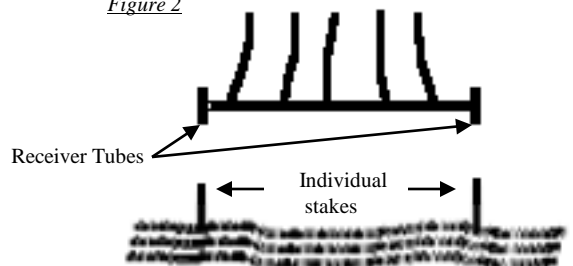


If your display does not include built-in-stakes, drive each individual stake into the ground to the stop (a welded washer) on the stake.

Then, set your display upright on the stakes by aligning the receiver tubes on your display with the stakes you've inserted into the ground (see [Figure 2](#) at right).

**Note:** The receiver tubes are pinched or welded shut at the top to prevent your display from making contact with the ground. This helps prevent moisture from getting into the light strands and damaging your display. **DO NOT DRIVE YOUR STAKES THROUGH THE RECEIVER TUBES.**

*Figure 2*



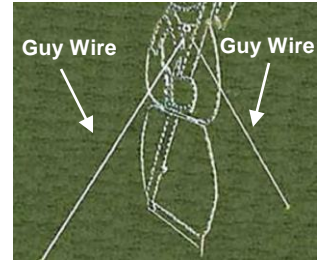
**4**

## Attach Guy Wires for Stability

One or more *Guy Wire Kits* have been included with your display. A guy wire is a cable designed to add stability to your display. **The stakes at the bottom of your display are NOT enough to hold your display upright in high winds.** One end of the guy wire attaches to your display and the other is anchored in the ground at a 45 degree angle. See the instructions included with your *Guy Wire Kit* for an illustrated explanation of how to correctly install your Guy Wires.

**We recommend that Guy Wires be used on all Ground Mounts!**

**Failure to attach Guy Wires to ground mounted displays can cause your display frame to bend or break and will void your warranty.**

**5**

## Hanging Display

- To hang your display, use the rings or washers located on or near the upper areas of the display.
- Be sure your hanging supports are strong enough to carry the weight of your display.

**6**

## Lighting your Display

- To light your display, connect your own outdoor-rated electrical cord into a 110v electrical outlet, which must be protected by a Ground Fault Circuit Interrupter (GFCI). Next, connect the cord into the plug(s) on the display to light it. To improve viewing, be sure to rotate bulbs on the frame that may have shifted during shipment or storage.
- If your display location requires more than one extension cord, we recommend elevating the connection between the two cords. A block of wood beneath the connection will help prevent moisture from tripping the GFCI on your outlet.

**7**

## Troubleshooting

- If a bulb is not lit, start by tightening the bulb. Bulbs occasionally become loose during shipping or from changes in temperature. The bulb should be firmly seated in the socket. If this does not fix the problem see *Bulb Replacement* below.

### Bulb Replacement

- Should you need to replace a bulb, simply unscrew the old bulb and screw in a replacement from the supplied *Extra Bulbs Bag*. If you need more replacement bulbs, contact us or the company from which you bought your display.

**8**

## Off-Season Storage

- Your display is made for **Seasonal Use Only**. Leaving your display out year round will void your warranty. **Never store your display in the sun between seasons.**
- If you live in a coastal area, be sure to hose off your display with fresh water at the end of each season before you store it for the off-season.
- Be sure to keep your display box for storage. You'll also need the display box should you ever want to return your display to our factory for repair or refurbishing.

## Customer Support

If you need assistance with this display, or to order additional parts or accessories, contact us toll free.