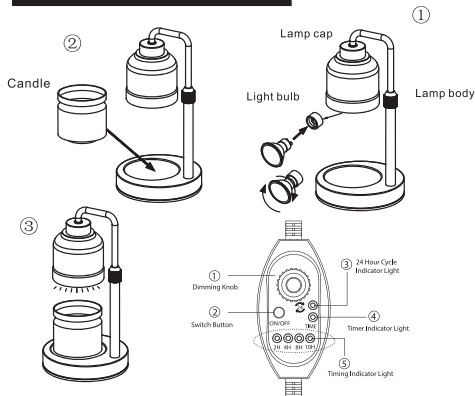


## Product introduction

The working principle of wax melting lamp is to warm the bulb to make the surface of fragrance candle melt evenly, release aroma. It is safer and more convenient without light candle, and has the function of decoration

## Instructions for use



After connecting to the power supply, click the ON/OFF button to enter the timing mode, the candle lamp brightness is adjusted by No.1 Dimming Knob, at which time the No. 4 indicator light will light up. Click the ON/OFF button again to select the 2/4/8/10h timer in turn. Once the set time has elapsed, the candle lamp will automatically turn off.

In the off-state, press and hold the ON/OFF button for 5S to enter the 24-hour cycle mode. The No. 3 indicator light will light up, and click the ON/OFF button again to select the cycle of 2/4/8/10h in turn. For example, setting a 2-hour timer at 7:00 PM will result in the lamp turning off automatically at 9:00 PM. The next day at 7:00 PM, the candle lamp (not a table lamp) will automatically turn on for 2 hours and then off, repeating this cycle daily.

## Parameters

Protection grade: Ip20
Working environment: - 5 °C ~ + 45 °C normal operation
Protection level against electric shock: Class II
Power: 50W Max
Power supply: 110V / 60Hz - 120V/50Hz

## Special Tips

- Please read this manual carefully before use;
- Do not use on a plane with an oblique angle of more than 6 degrees ;
- Keep away from children and pets. Avoid direct sunlight and high humidity ;
- Remove the plastic protective bag outside the lamp body before use ;
- Before use, please check whether the voltage is the same and whether the product is damaged;
- Do not turn on the power supply before the installation of the product is completed. Cut off the power supply before moving;
- Please use it under stable voltage. Unstable voltage will shorten the lifespan of the bulb;
- Please keep away from curtains, paper and other inflammables ;
- When using the Wax melting lamp, do not light candles at the same time to avoid accidents ;
- When the product is working or not cooled, do not touch around the bulb and lampshade to prevent scalding;
- Before going to bed, you need to turn off the power supply to avoid excessive working temperature for a long time;
- Do not use wet hands to plug and dial the power supply to avoid the risk of electric shock
- This product is only suitable for indoor use.

## Suggestions

- Before wiping and cleaning this product, be sure to disconnect the power supply;
- Do not use grinding tools and solvents to clean this product;
- Regular cleaning and inspection are recommend to prolong the service life;
- It is forbidden to wash the lamp body directly with water;
- It is forbidden to disassemble the product for modification.