

WARRANTY SERVICES

1 year warranty services are provided for TMAFON's light fixture.

We provide 24-hour customer service, and any questions you have will be answered within 24 hours, If you have any questions or problems during the warranty period, please feel free to contact us via email, your order ID and details are preferred so that our customer service will help you more quickly and accurately!

Note: please use this light fixture accordingly to its intended purpose, do not retrofit or remodeling this light fixture. The warranty does not cover if the failure is caused by the third party product, or natural disasters.

lighting&home

Your satisfaction is our unremitting pursuit!

INSTALLATION MANUAL



In case of crystals fragmentation occurred during transportation, there are enough spare parts in package.

This light fixture requires 24 pieces E12 bulbs, Bulbs not included.

Your satisfaction is our unremitting pursuit!

We are a company with 21 years history, focusing on the R & D, production and sales of indoor lighting, with a factory covering an area of more than 9000 square meters and an independent R & D and production team.

We are always committed to the production of high-quality lighting. Each product has to undergo dozens of adjustments and

improvements, and select the high quality materials. So far, we have served customers of more than 60 countries, and our light fixtures have illuminated more than 200000 families .

We attach great importance to our customers' shopping experience. We have prepared spare parts for the fragile or easy-lost parts of each product, not only considering the damage during transportation, but also considering the loss or damage during your installation and use. We provide 24-hour after-sales service. No matter what problems you encounter, you can get timely feedback.

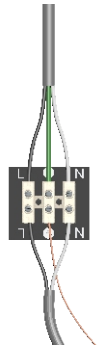


① Put on bulbs that prepared in advance

② Hang Crystals on Lamp frame

Notes: 1) Hang the inner layer first, and the the outer layer

2) Please make sure that the bottom of each crystal is on the same horizontal line for the best effect.

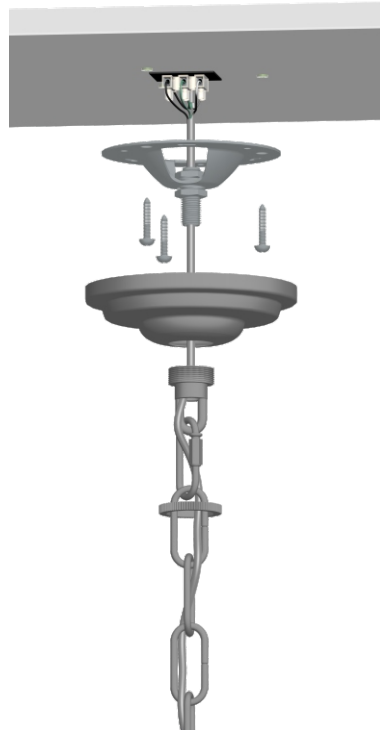


HOUSE WIRES

Black(Live wire)
White(Neutral wire)
Green(Ground Wire)

LAMP WIRES

Black(Live wire)
White(Neutral wire)
Brass wire(Ground Wire)



1. Fix the Mounting Bracket on the ceiling
2. Cover the Ceiling Canopy on Mounting Bracket, and lock it with Decorative Nuts

SAFETY INSTRUCTIONS

These instructions are provided for your safety. It is very important that they are read completely before beginning the installation of your fixture.

1. WE RECOMMEND INSTALLATION BY A LICENSED ELECTRICIAN.
2. This fixture require E12 bulbs(not included in product), bulb rated wattage Max 40W. To avoid risk of fire, do not exceed the recommended wattage.
3. If any special control devices are used with this fixture, follow the instructions carefully to assure full compliance with N.E.C. requirements. If there are any questions, contact a qualified electrical contractor.
4. Please make sure shut off the main electrical supply before installation, changing bulbs or cleaning light fixture.

WARNINGS

THIS IS NOT A TOY AND THE PRODUCT HAS NO PLAY VALUE.

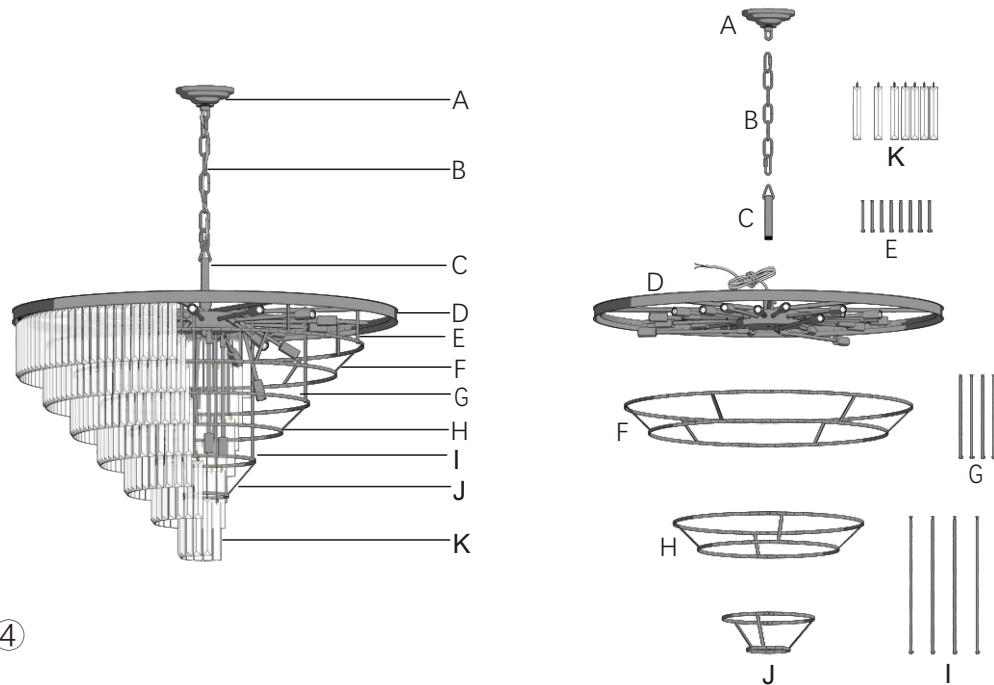
Keep at least 3 ft away from cribs, bassinets, and toddler beds.

Keep out of reach of children under 3.

PREPARATION

1. Before begining installation, make sure all parts are included refer to the contents diagrams(PACKAGE CONTENTS).
2. Do not worry about broken parts, there are enough spare parts in package.
3. E12 bulbs(Max.40W) are required.
4. Please install according to the instructions.

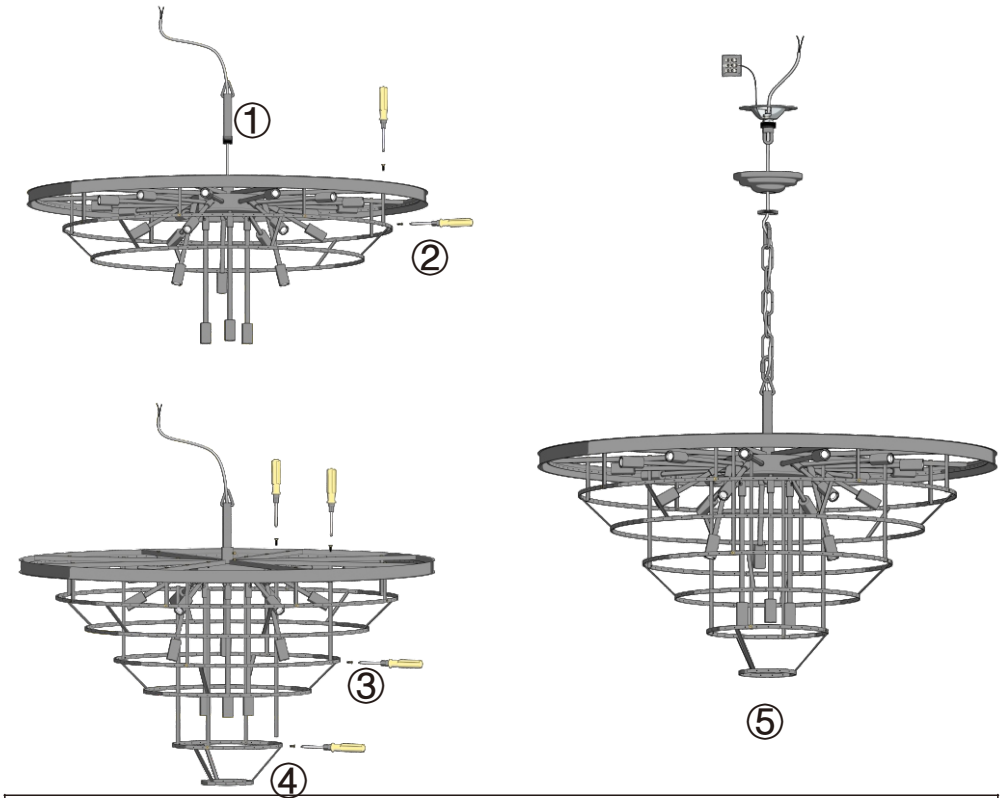
PACKAGE CONTENTS



© ④

Item	Description		
A	Ceiling Canopy(with mounting bracket)		
B	Metal Chain	G	Medium Connection Bar
C	Hanger Rod	H	Lamp Frame 3
D	Lamp Frame 1	I	Long Connection Bar
E	Short Connection Bar	J	Lamp Frame 4
F	Lamp Frame 2	K	Crystals and Pins
Spare parts			

FRAME INSTALLATION



① Fix Hanger Rod on Lamp Frame as shown
② Connect Lamp Frame 1 and Lamp Frame 2 via Short Connection Bar
Connect Lamp Frame 1+2 and Lamp Frame 3 via Medium Connection Bar
④ Connect Lamp Frame 1+2+3 and Lamp Frame 4 via Long Connection Bar
⑤ Take off mounting bracket from Ceiling Canopy. Cut Metal Chain for proper length if necessary. Connect Lamp Frame and Ceiling Canopy via Metal Chain, and pass the main wire through the Ceiling Canopy

Your satisfaction is our unremitting pursuit!

Your satisfaction is our unremitting pursuit!