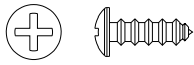


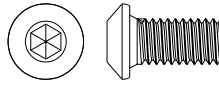
Pegboard Storage

Accessory Package

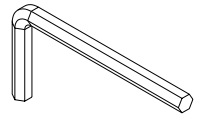
PLEASE NOTE: Check that you have received all components and hardware before assembling. If you are missing any parts, please contact us for replacement parts.



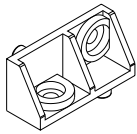
A. 1/2" Flat Head Screw - 27



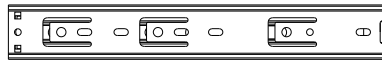
B. 1/2" Small Machine Screw - 16



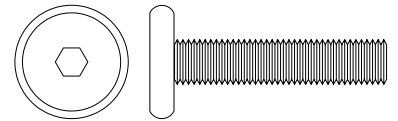
C. Wrench - 1



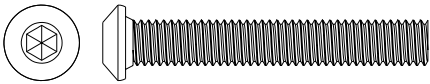
D. Plastic Angle code - 4



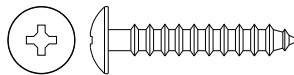
E. EXTENSION RAIL - 2



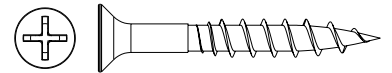
F. 1-1/8" Small Machine Screw - 8



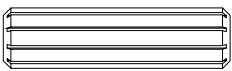
G. 1-9/16" Small Machine Screw - 12



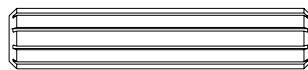
H. 1" Flat Head Screw - 12



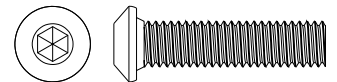
I. 1-1/2" Flat Head Screw - 14



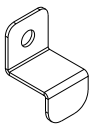
J. Wood Dowel - 6



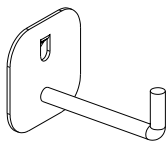
K. Wood Dowel - 4



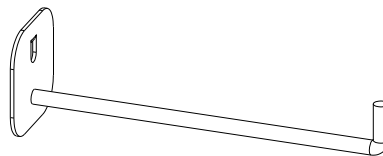
L. 1" Small Machine Screw - 12



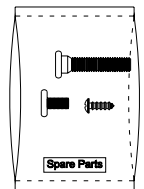
N. hook - 12



M. Short hook - 1

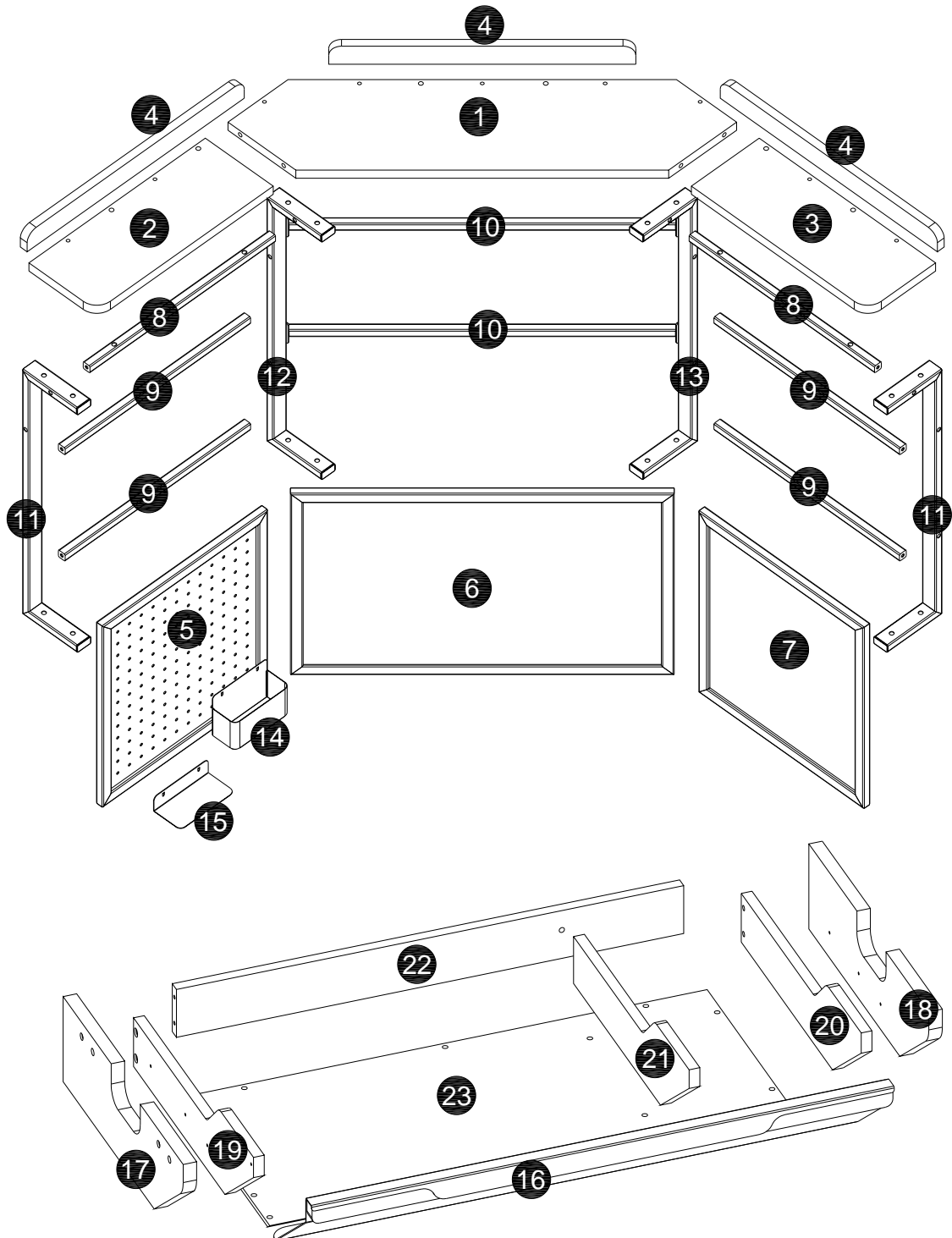


O. Long hook - 1

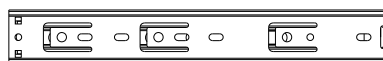
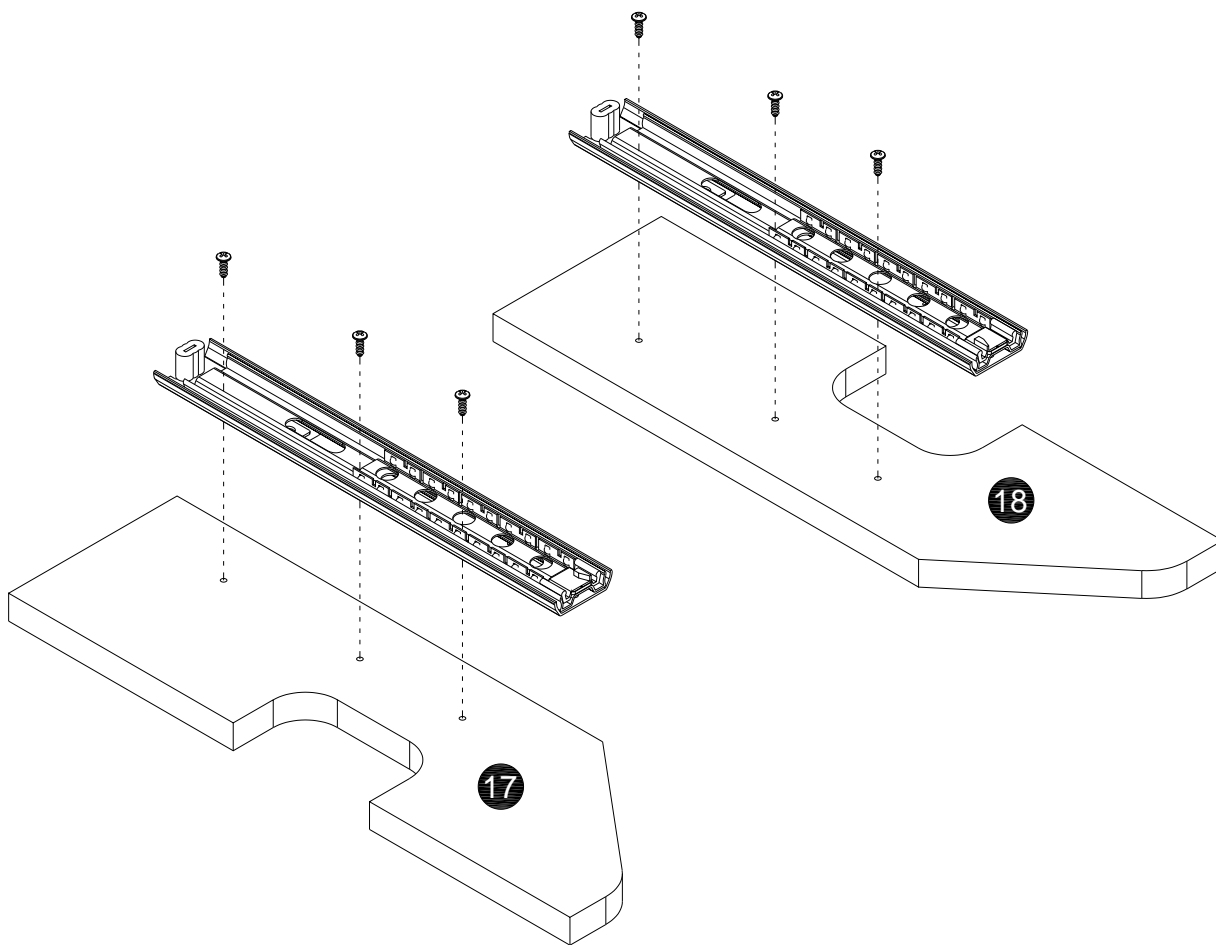
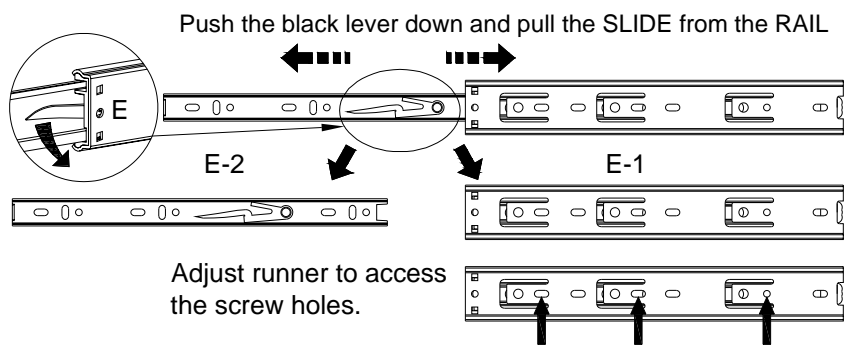


P. Spare Parts - 1

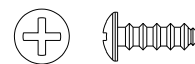
Diagram of Components



STEP 1

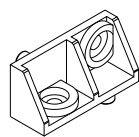
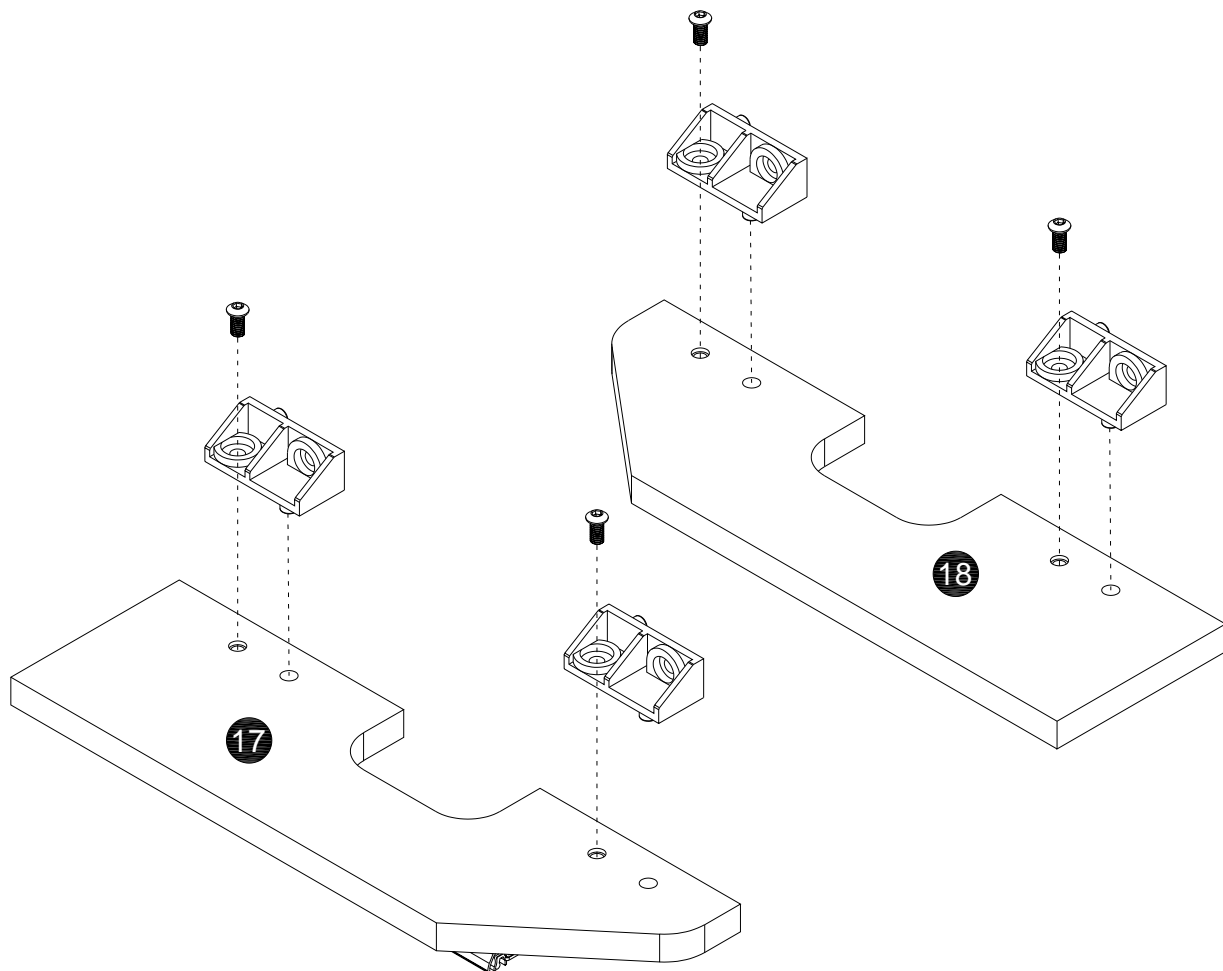


E.EXTENSION RAIL -2

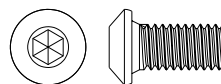


A.1/2"Flat Head Screw- 6

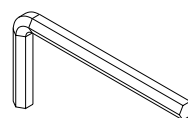
STEP 2



D. Plastic Angle code- 4

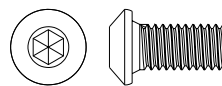
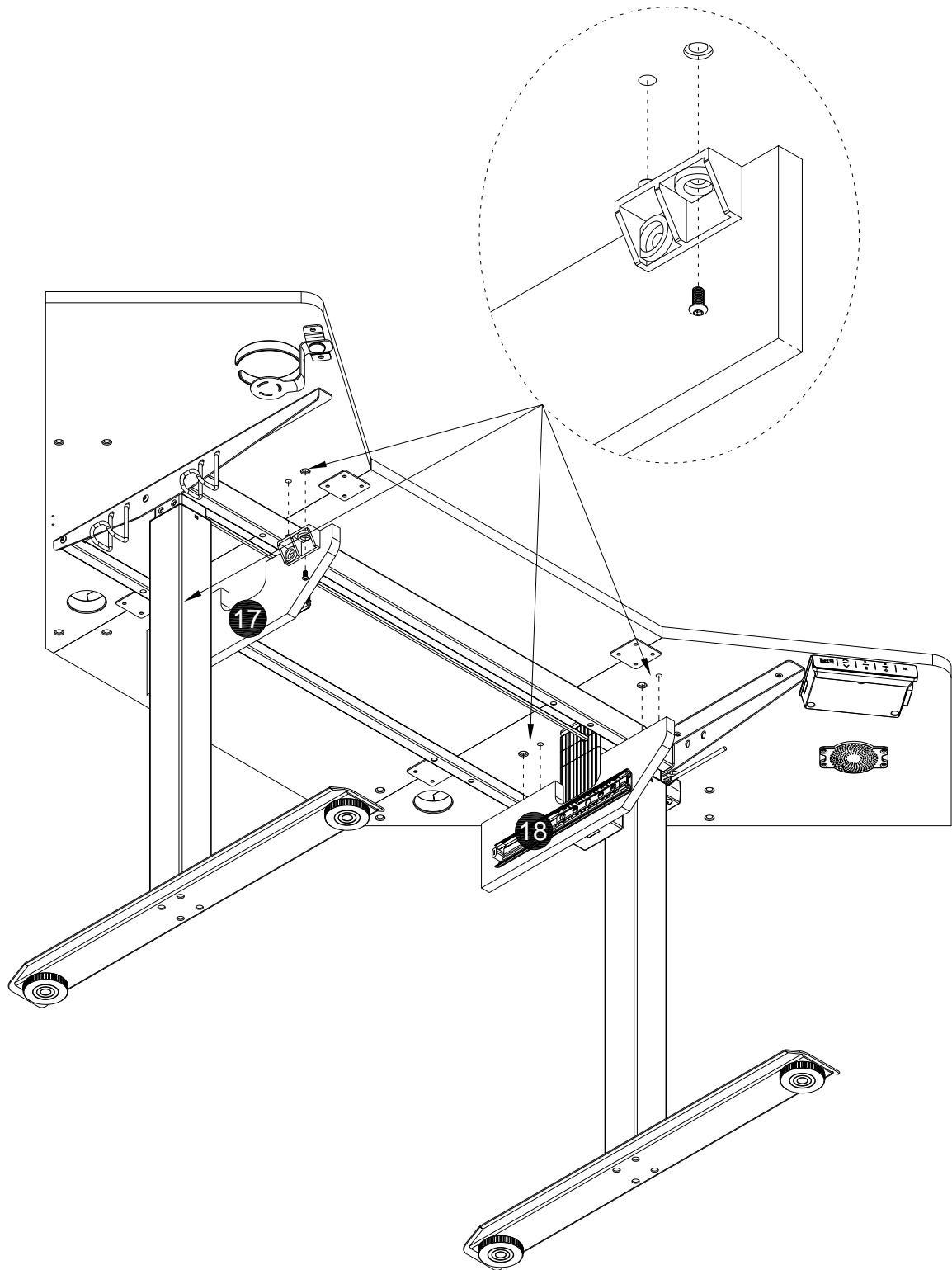


B. 1/2" Small Machine Screw - 4

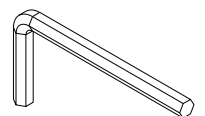


C. Wrench - 1

STEP 3

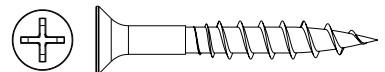
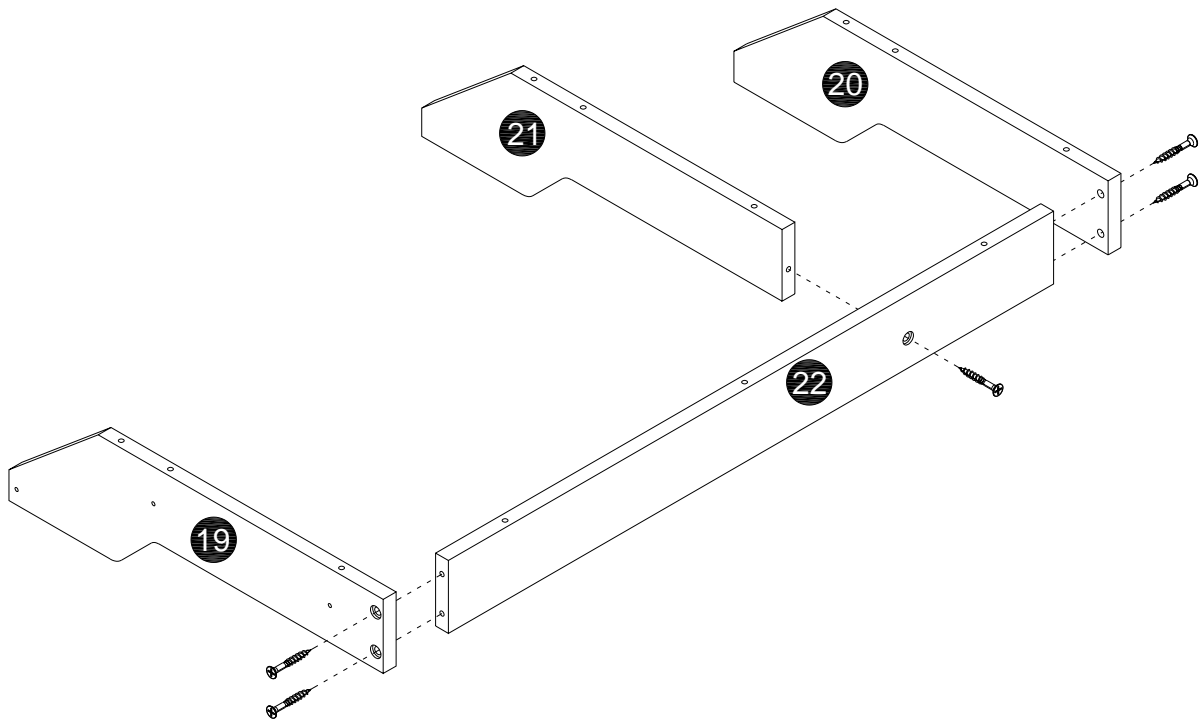


B. 1/2" Small Machine Screw - 4



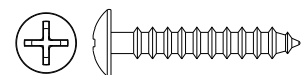
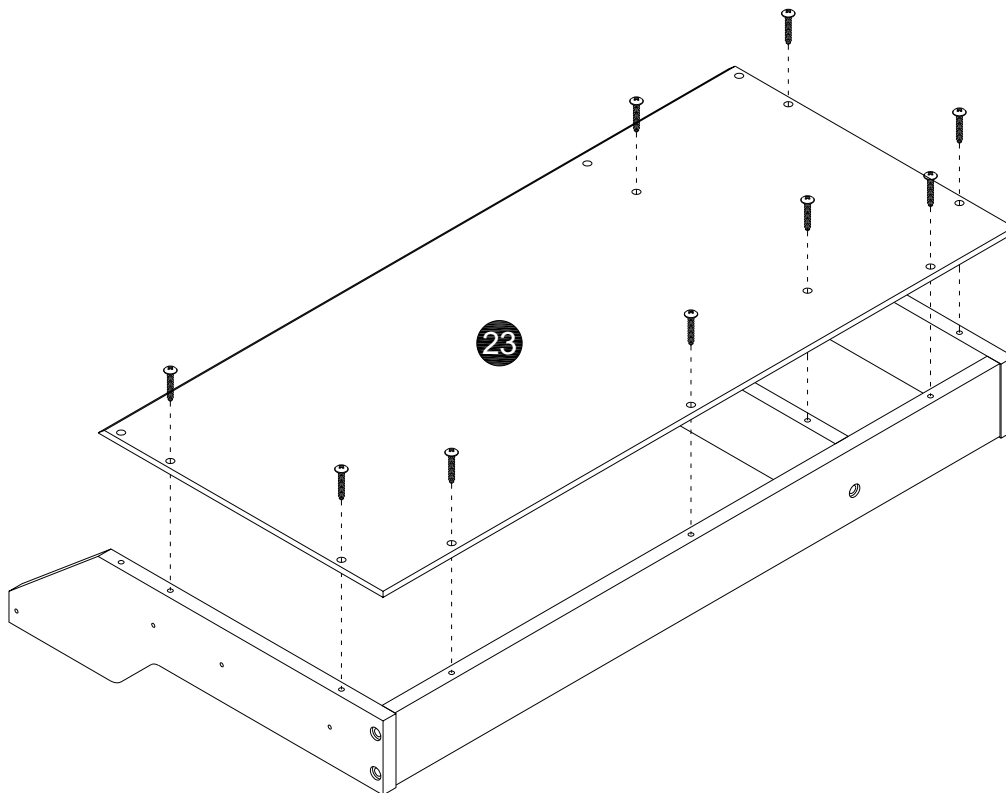
C. Wrench - 1

STEP 4



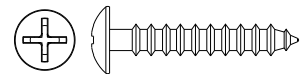
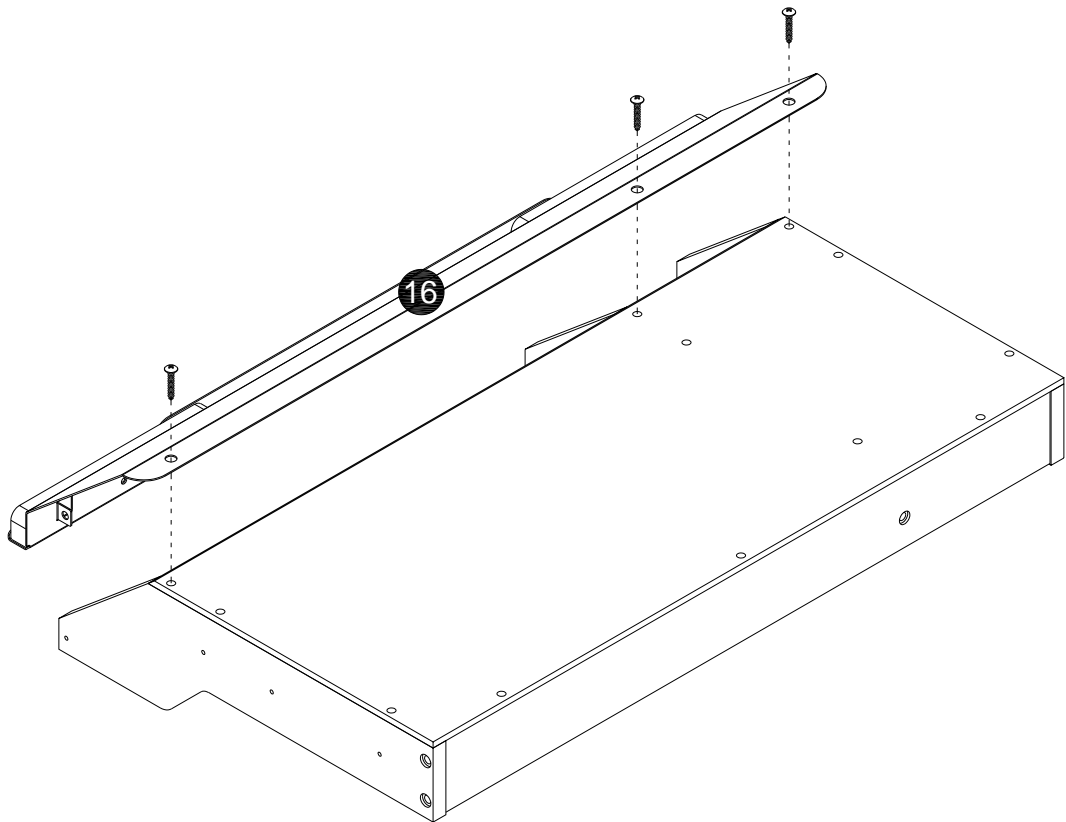
I. 1-1/2" Flat Head Screw- 5

STEP 5



H. 1" Flat Head Screw- 9

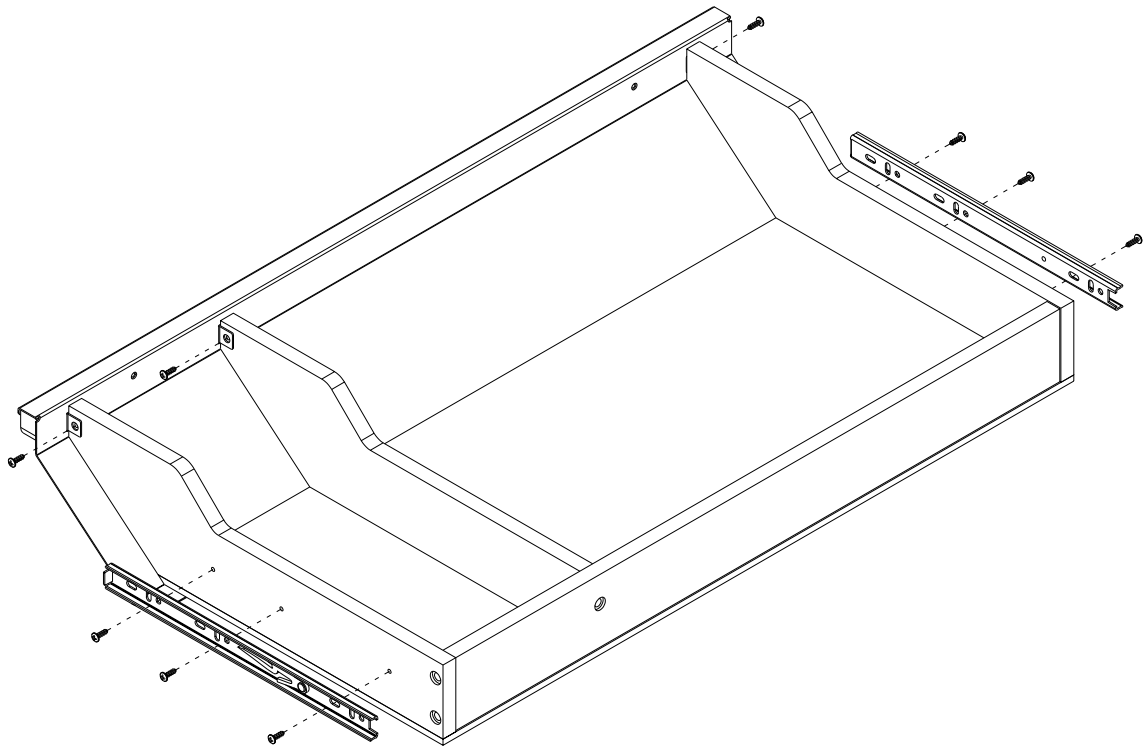
STEP 6



H. 1" Flat Head Screw- 3

STEP 7

Adjust runner to access the screw holes.

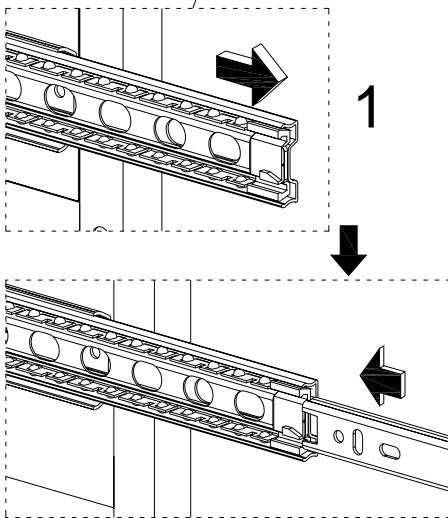
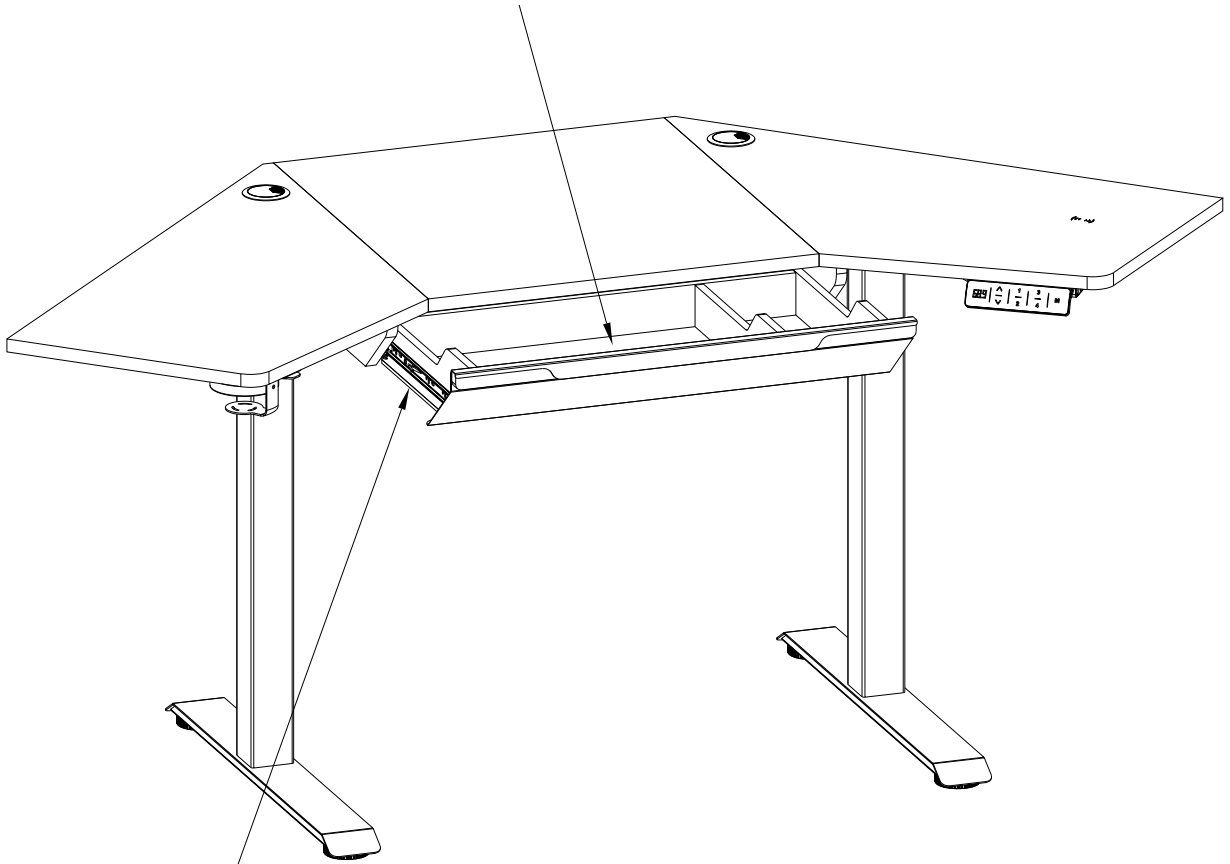


E.EXTENSION RAIL -2

A.1/2"Flat Head Screw- 9

STEP 8

MAXIMUM LOAD
9 kg / 20 lbs

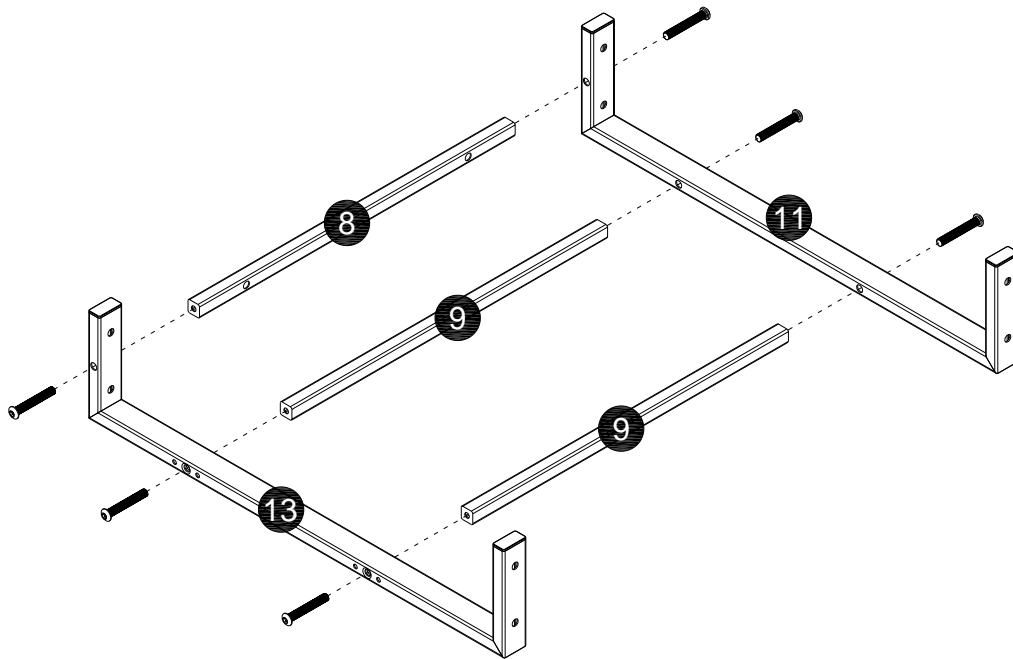
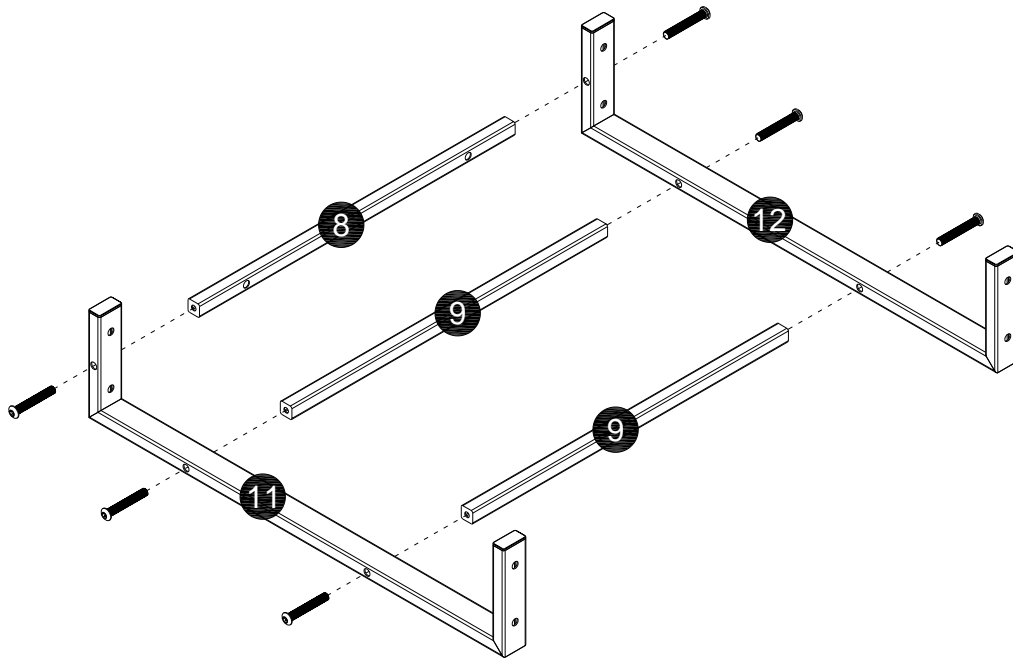


Carefully stand your unit upright.

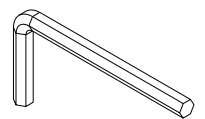
To insert the drawer into your unit, line up the EXTENSION SLIDES on the drawer with the EXTENSION RAILS on the

unit and push the drawer into the unit until the drawer is fully inserted. The drawer will push in hard until it is all the way in, then it will slide in and out easier.

STEP 9

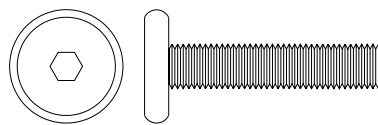
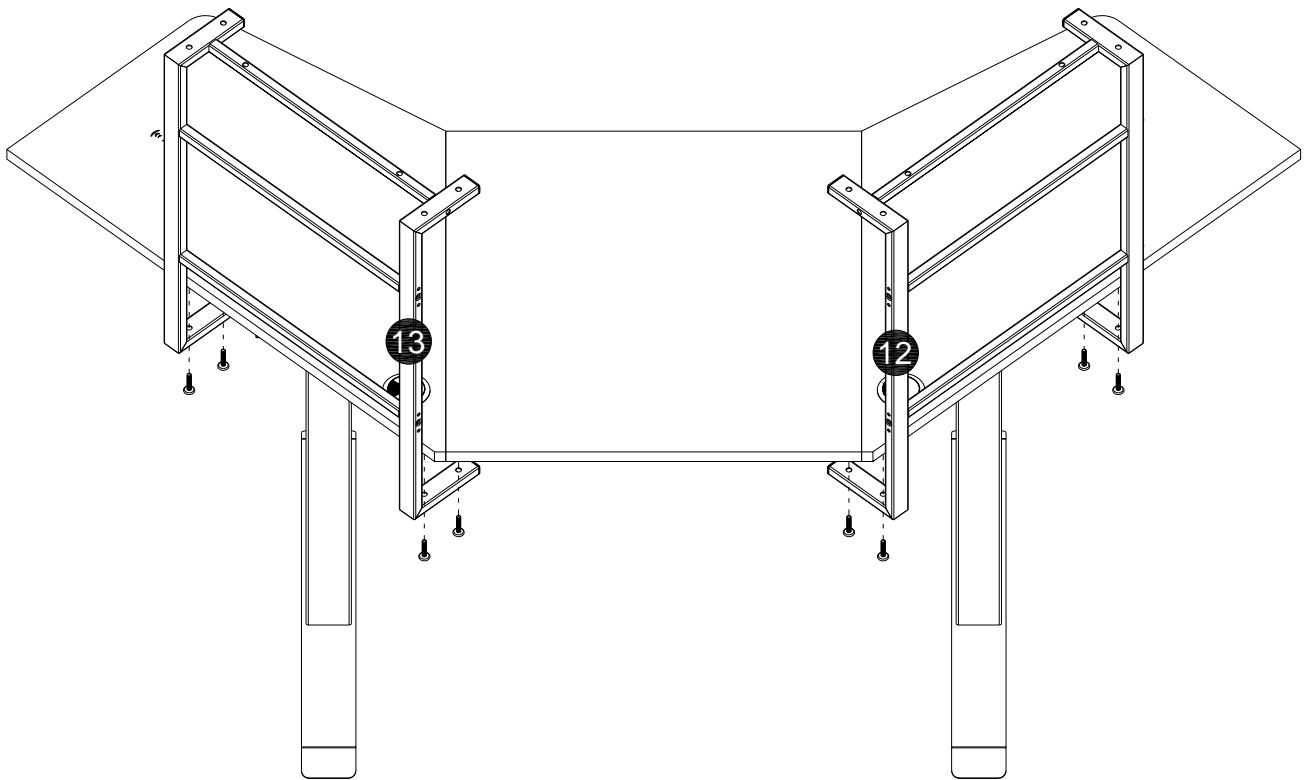


G. 1-9/16" Small Machine Screw - 12

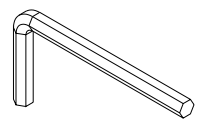


C. Wrench - 1

STEP 10

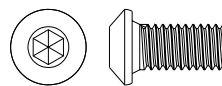
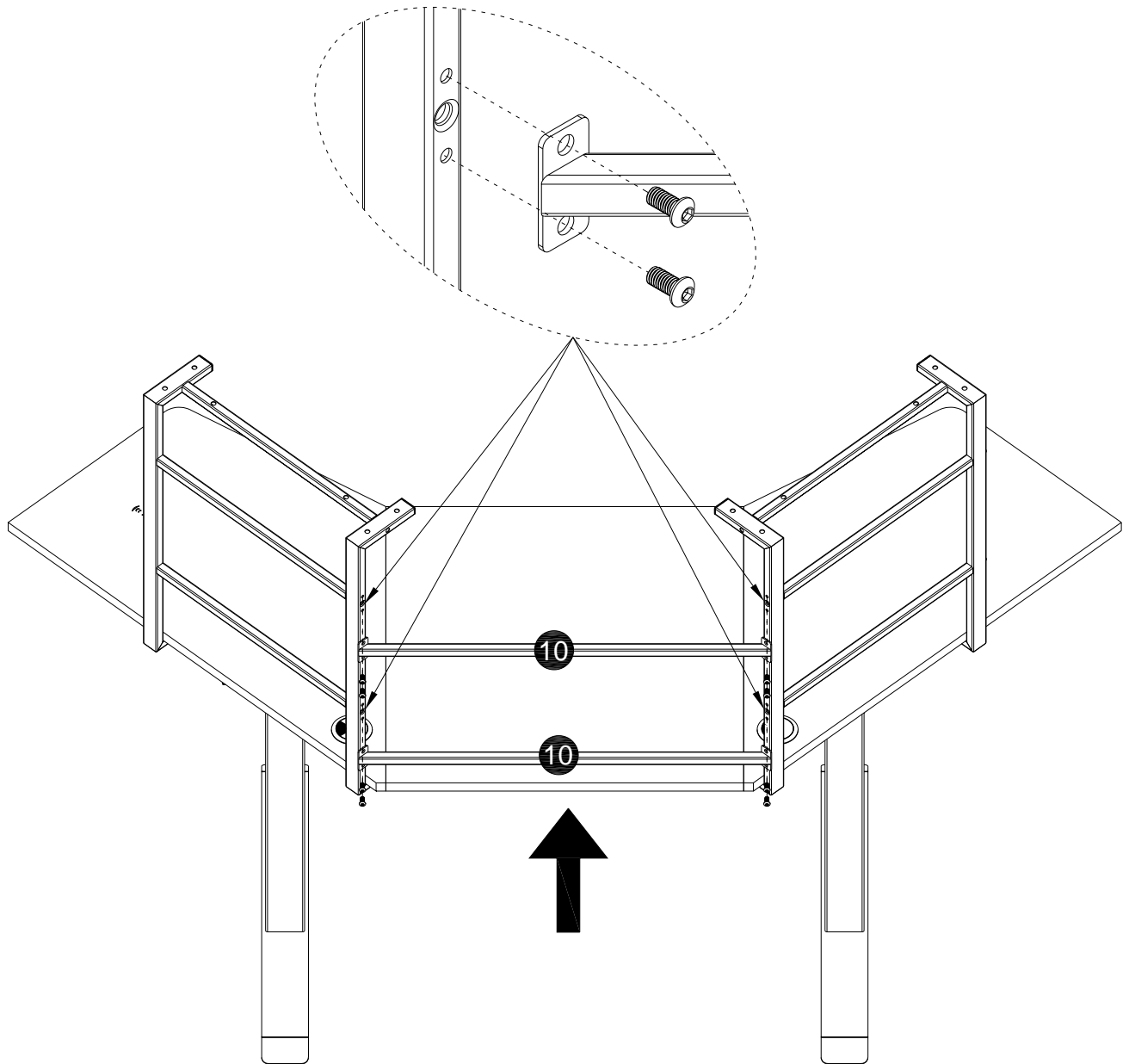


F. 1-1/8" Small Machine Screw - 8

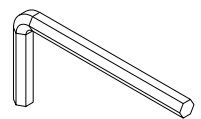


C. Wrench - 1

STEP 11

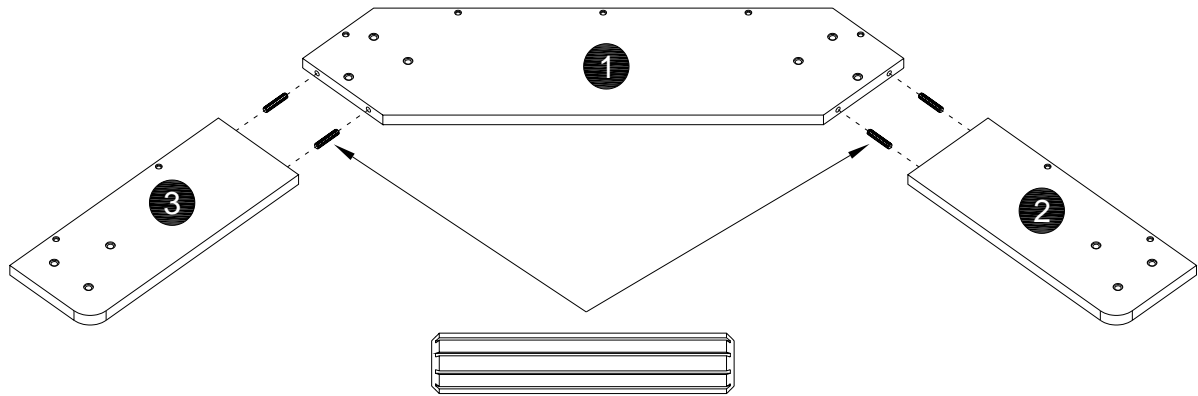


B. 1/2" Small Machine Screw - 8

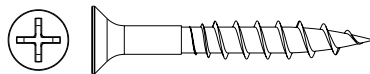
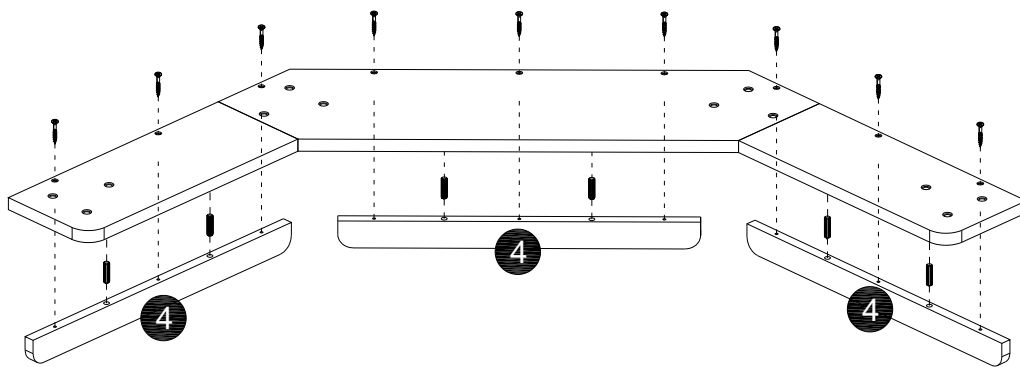
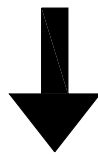


C. Wrench - 1

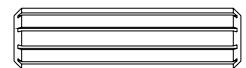
STEP 12



K. Wood Dowel - 4




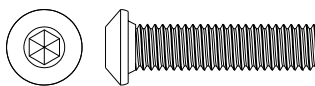
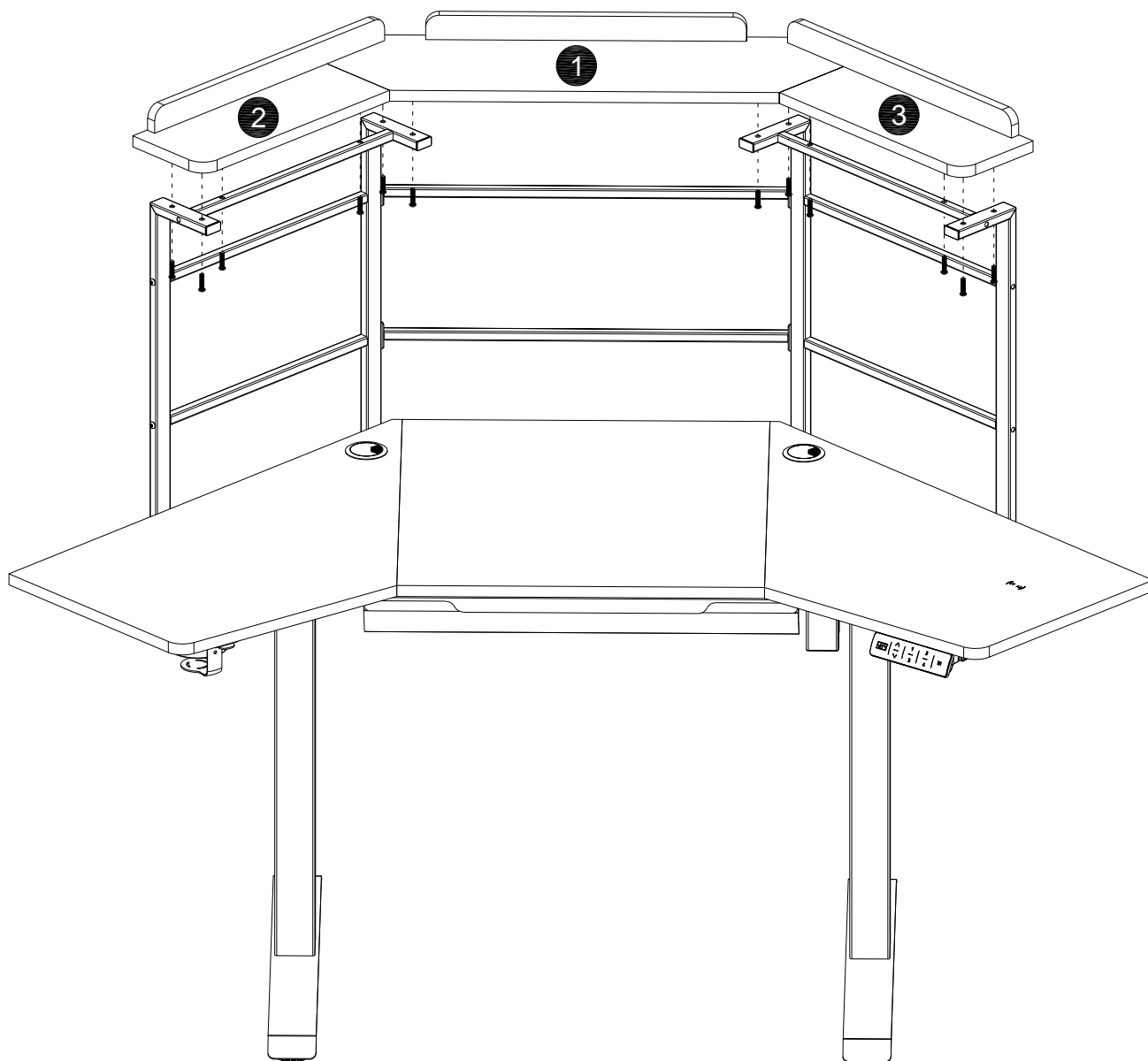
H. 1-1/2" Flat Head Screw - 9



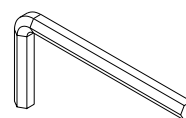
J. Wood Dowel - 6

STEP 13

 Before tighten all the screws , be sure check whether the hole is consistent with the corresponding position on the manual.

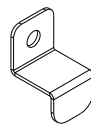
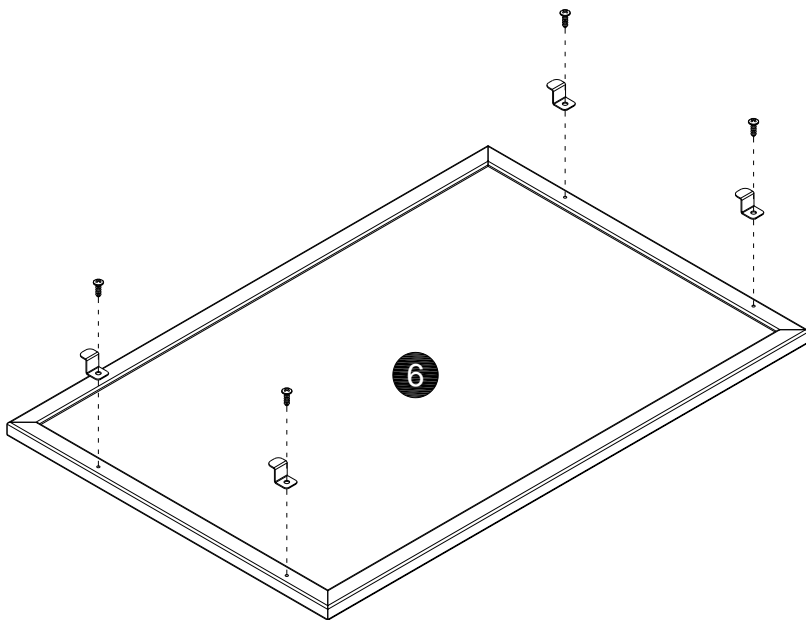
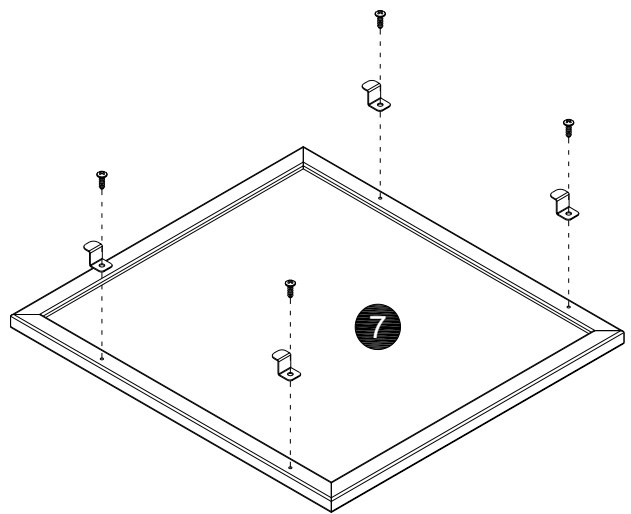
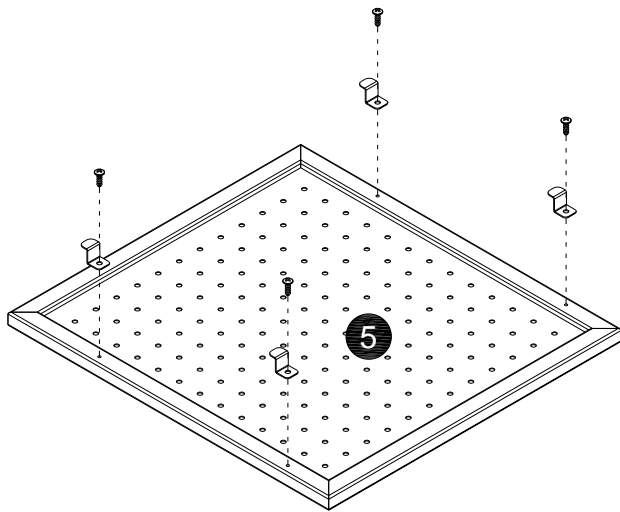


L.1"Small Machine Screw - 12



C.Wrench - 1

STEP 14

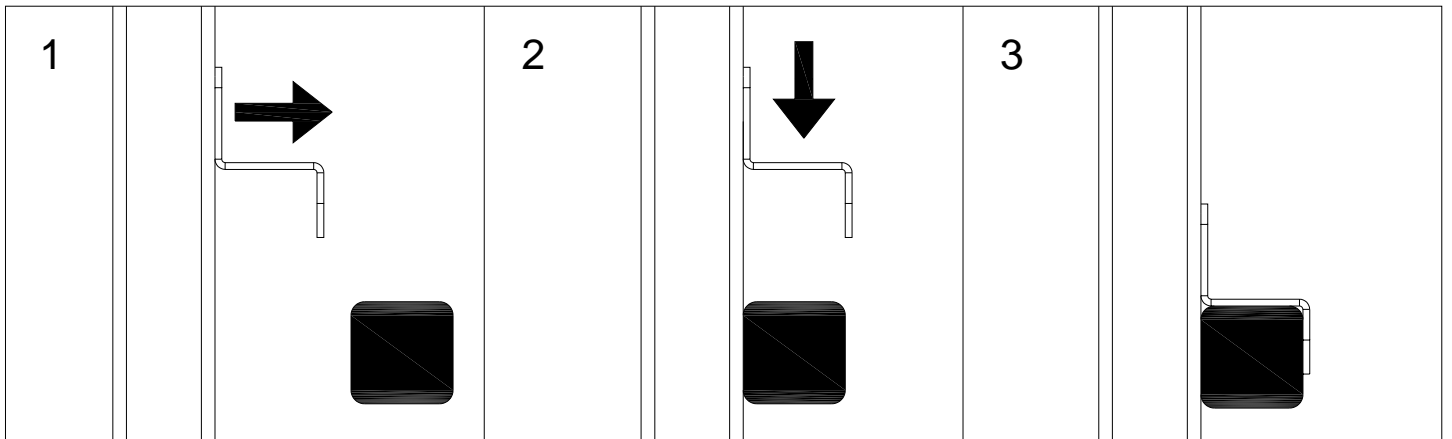
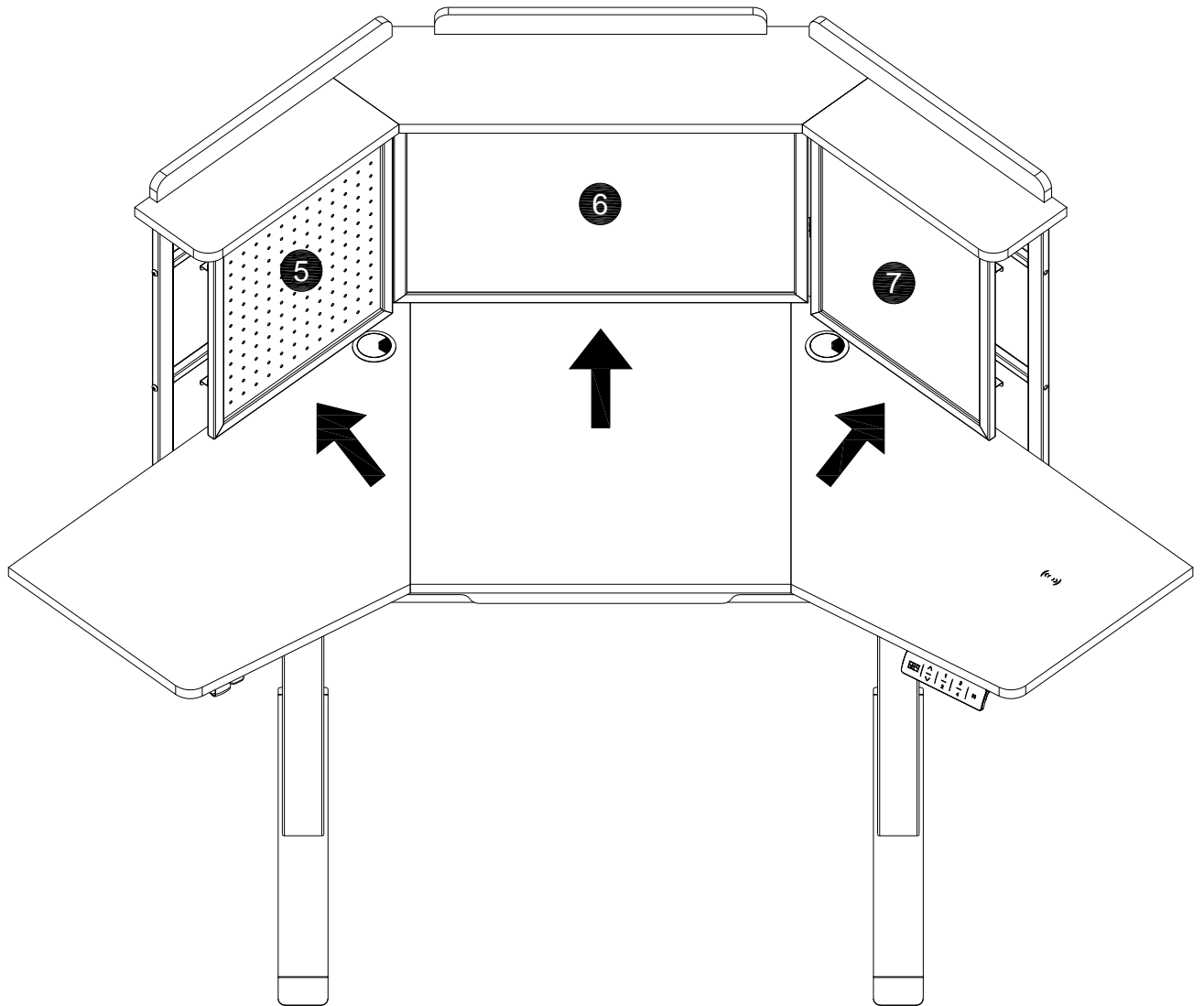


N.hook - 12



A.1/2" Flat Head Screw- 12

STEP 15



STEP 15

