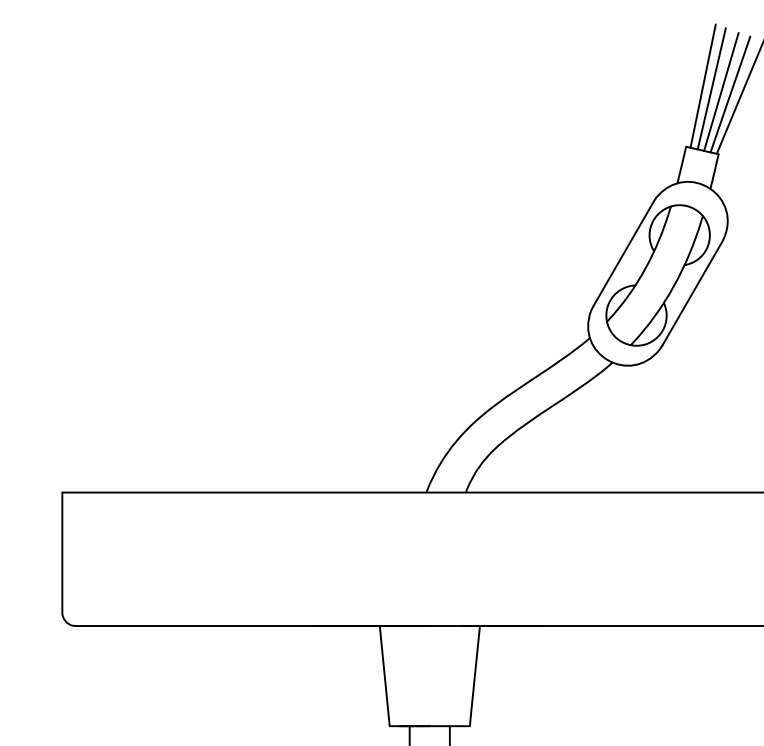


ADJUST THE WIRE TO
DEMAND LENGTH BY
ADJUSTING THE PLASTIC
CABLE PIECE.



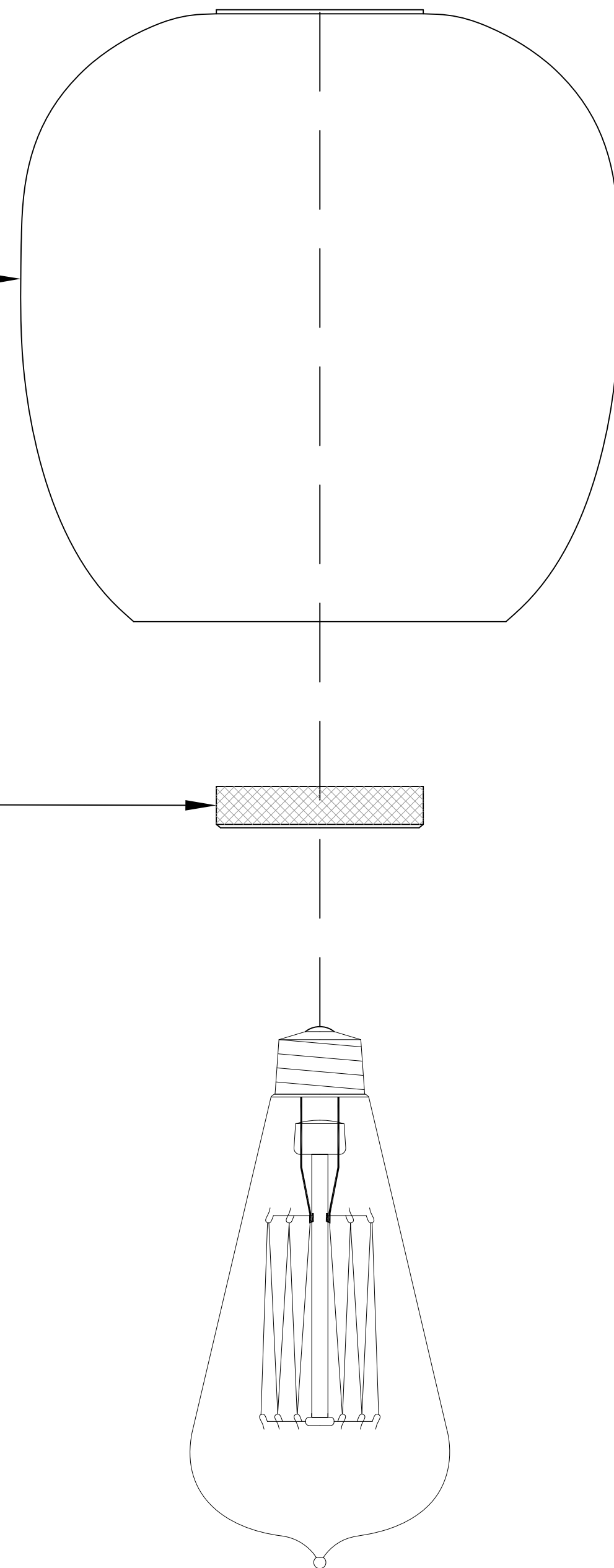
ADJUST THE WIRE TO
DEMAND LENGTH BY
ADJUSTING THE PLASTIC
CABLE PIECE.

SOCKET CUP

CHECK RING

GLASS (OR SHADE)
WITHOUT LIP OR NECK

THREADED SOCKET RING



ASSEMBLY
SLIDE DECORATIVE CHECK
RING AND SHADE ONTO
THREADED SOCKET CUP AND
SECURE USING THREADED
SOCKET RING. DO NOT OVER
TIGHTEN THREADED SOCKET
RING TO AVOID BREAKING
THE GLASS

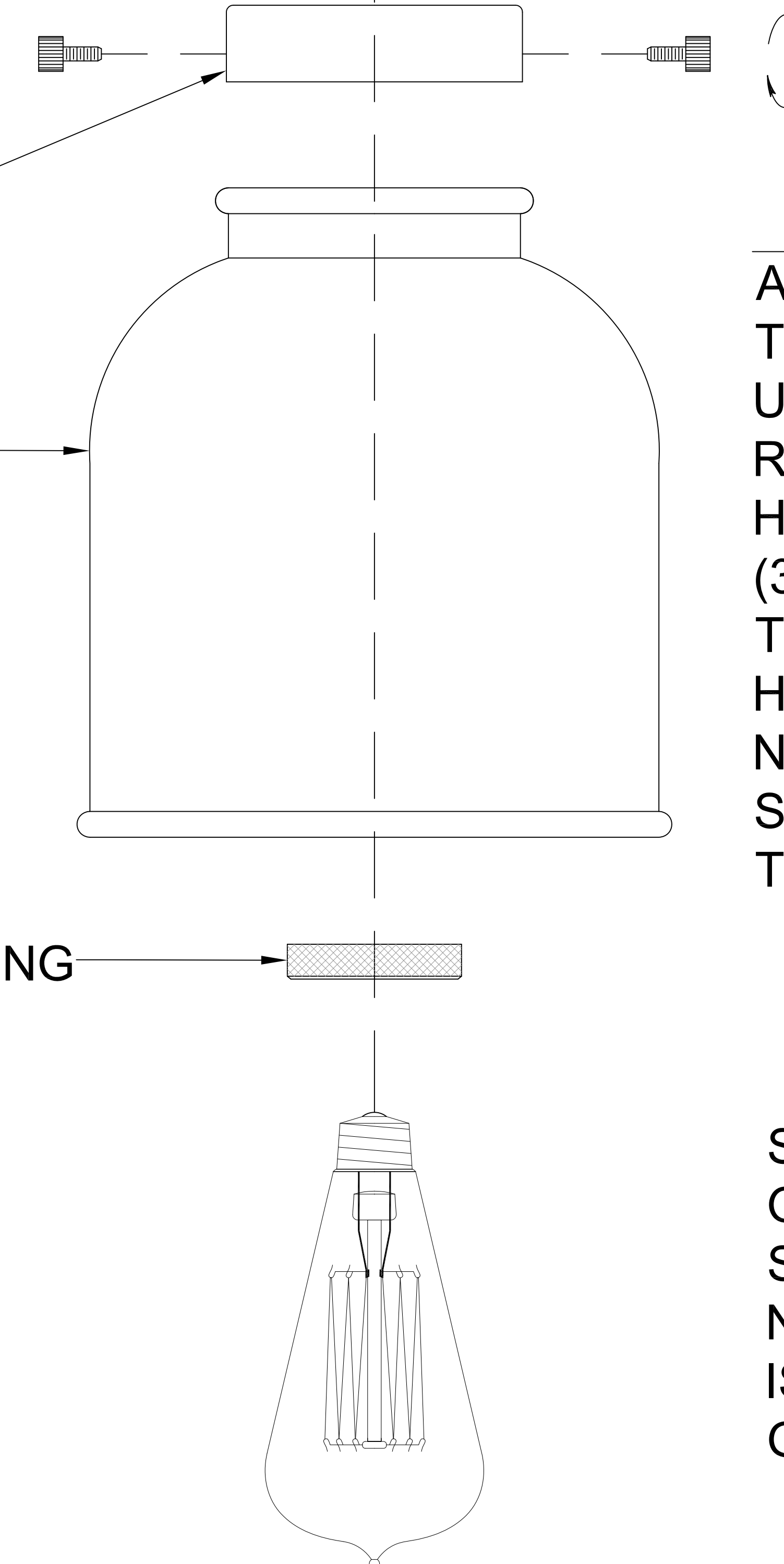
SHADE STYLE & BULB
OPTIONAL IF THE GLASS YOU
SELECTED DOES NOT HAVE A
LIP OR NECK THE HR-314B
HOLDER IS NOT NEEDED TO
ATTACH THE GLASS --- PLEASE
DISCARD IT

SOCKET CUP

HR-314B HOLDER

GLASS (OR SHADE)
WITH LIP OR NECK

THREADED SOCKET RING



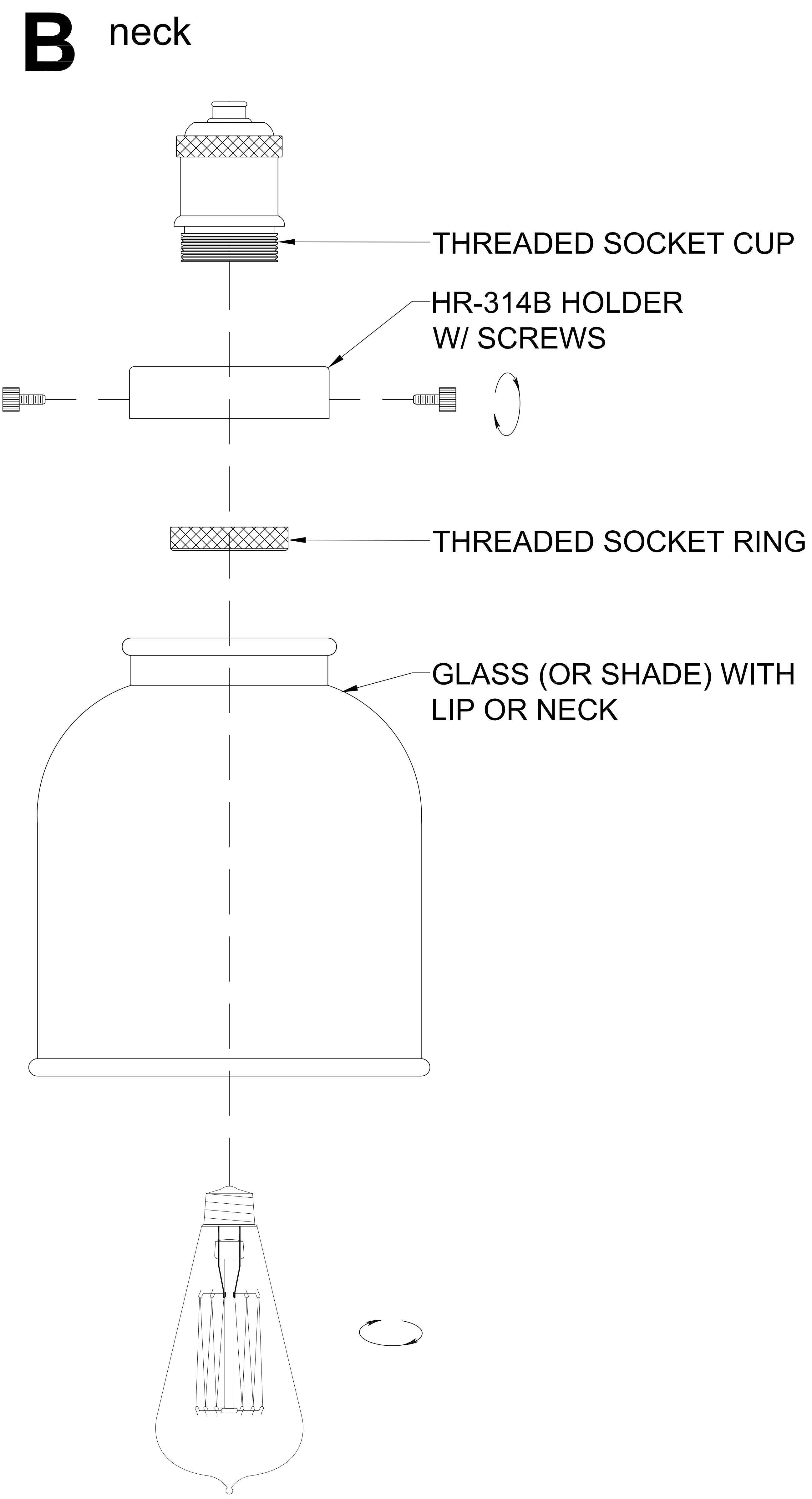
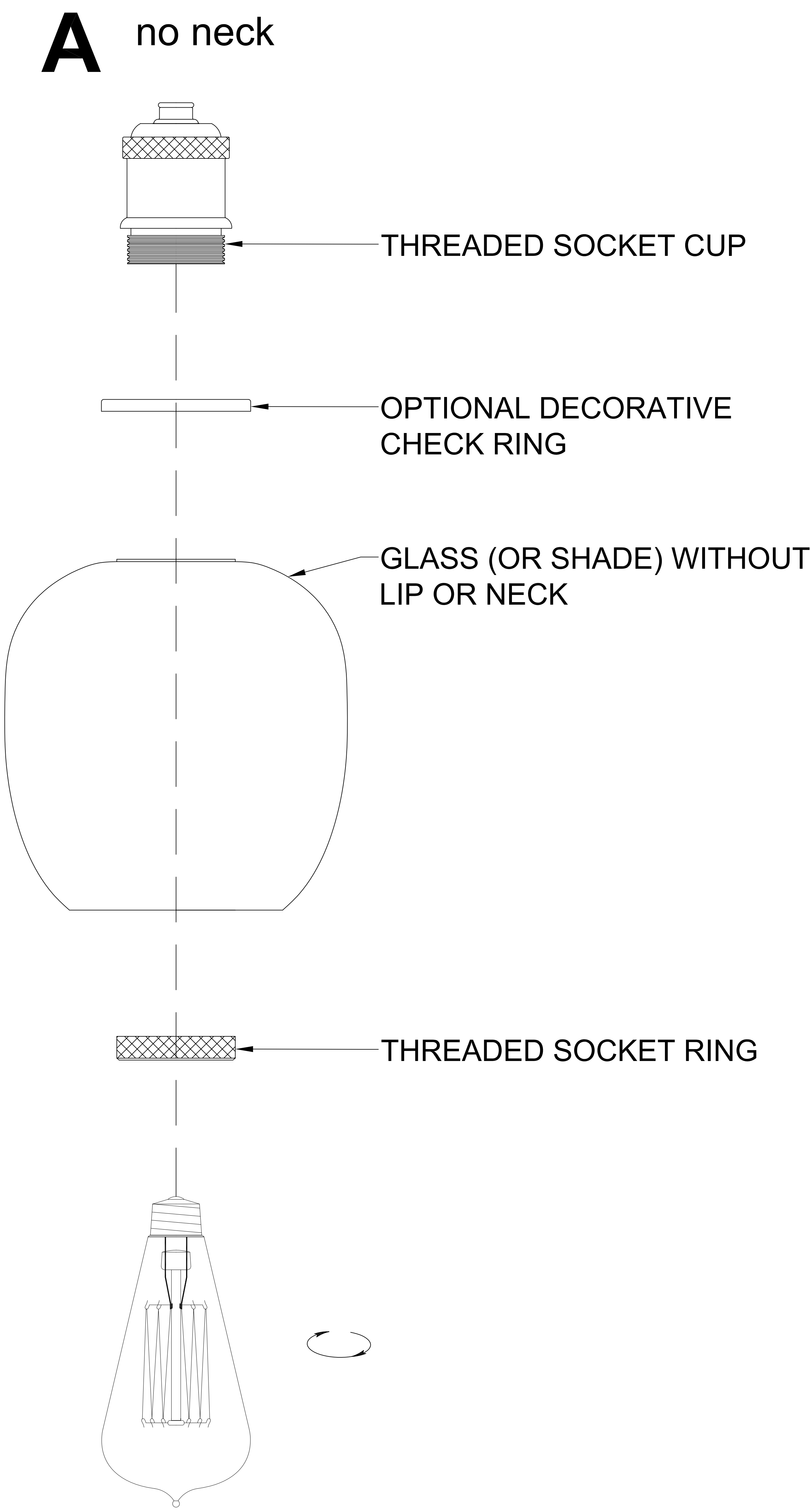
URBAN ASSEMBLY
ATTACH THE HR-314B HOLDER
TO THREADED SOCKET CUP
USING THREADED SOCKET
RING SLIDE SHADE INTO THE
HR-314B HOLDER TIGHTEN THE
(3) THUMB, TIGHTEN THE (3)
THUMB SCREWS EVENLY TO
HOLD GLASS IN PLACE DOT
NOT OVER TIGHTEN THUMB
SCREWS TO AVOID BREAKING
THE GLASS

SHADE STYLE & BULB
OPTIONAL IF THE GLASS YOU
SELECTED HAS A LIP OR
NECK THE HR-314B HOLDER
IS NEEDED TO ATTACH THE
GLASS

THANK YOU FOR PURCHASING A FIXTURE

Please FIRST take a look at your glass/metal shade to see if it looks like A (no neck) or B (with a neck)
YOU WILL FIND BOTH THE CHECK RING (for A - which might not be needed depending on the thickness of the glass)
AND the HOLDER with screw (FOR B)

Please continue to follow the below graphic illustration as shown.
WE ENCOURAGE YOU TO SAVE THE EXTRA PART. You might decide to change your glass and will need it in the future
(instead of replacing the entire fixture for a new look)



Glass Assembly (glass without lip or neck)

SLIDE OPTIONAL DECORATIVE CHECK RING AND SHADE ONTO THREADED SOCKET CUP AND SECURE USING THREADED SOCKET RING

DO NOT OVER TIGHTEN THREADED SOCKET RING TO AVOID BREAKING THE GLASS OR METAL SHADE

THIS ASSEMBLY DOES NOT USE HR-314B HOLDER.

Glass Assembly (glass with lip or neck)

ATTACH THE HR-314B HOLDER TO THREADED SOCKET CUP USING THREADED SOCKET RING,

SLIDE SHADE INTO THE HR-314B HOLDER, TIGHTEN THE (3) THUMB SCREWS EVENLY TO HOLD SHADE IN PLACE

DO NOT OVER TIGHTEN THUMB SCREWS TO AVOID BREAKING THIS GLASS OR METAL SHADE

THIS ASSEMBLY DOES NOT USE DECORATIVE CHECK RING. (might not be needed if glass is thick)

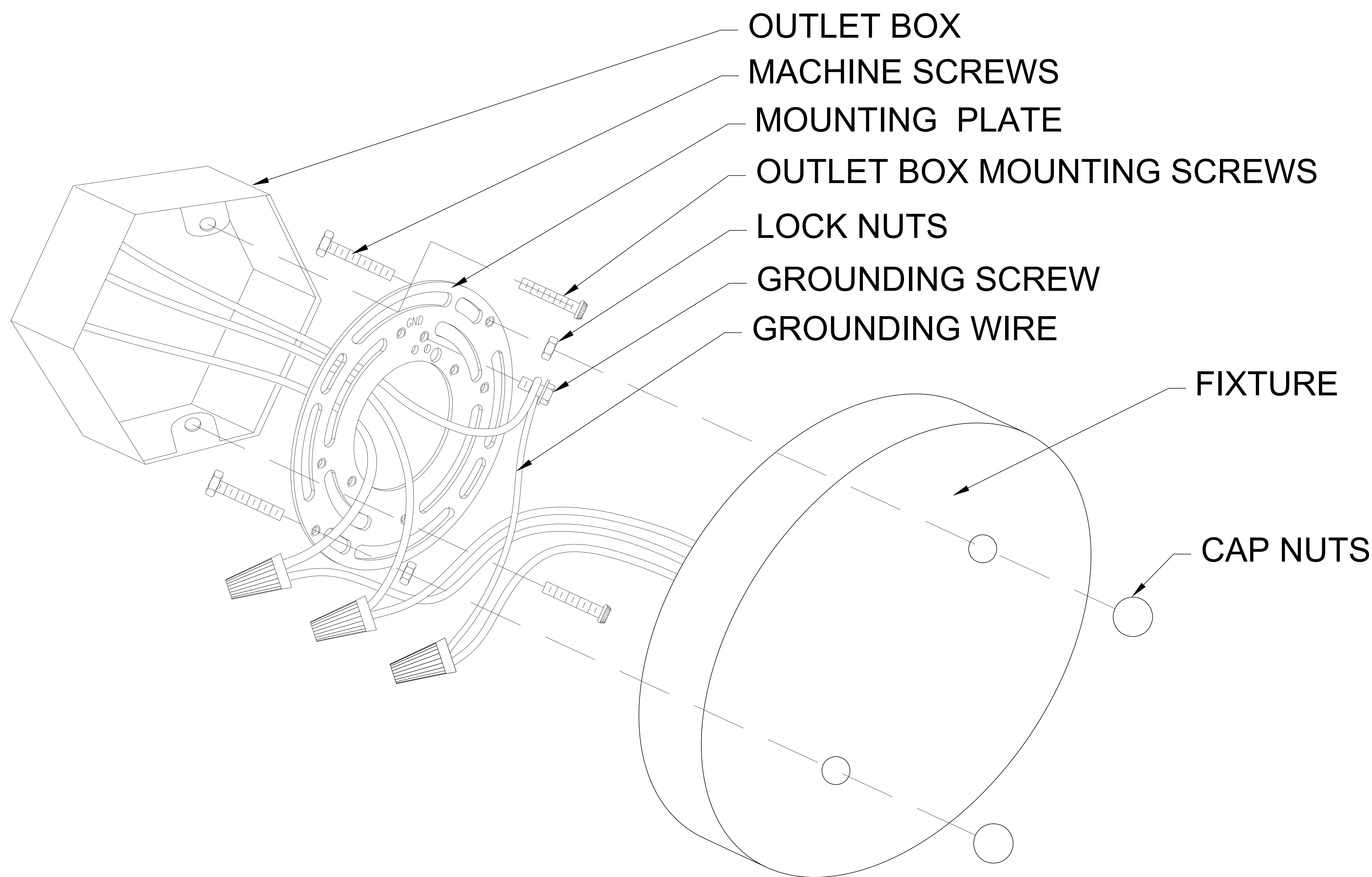
STANDARD MOUNTING PLATE INSTALLATION INSTRUCTIONS

FOR YOUR SAFETY WARNING

Risk of Fire, Consult a qualified electrician to ensure correct branch circuit conductor.
Turn off the main power at the circuit breaker before installing the fixture in order to prevent possible shock.

General

All electrical connections must be in accordance with local and National Electrical Code (N.E.C.) standards. If you are unfamiliar with proper electrical wiring connections obtain the services of a qualified electrician. Remove the fixture and the mounting package from the box and make sure that no parts are missing by referencing the illustration.



CAUTION: DISCONNECT POWER DURING INSTALLATION

- 1.) If you are replacing an existing fixture, disconnect and remove the old fixture. Expose the supply wiring from the outlet box.
- 2.) Thread the machine screws into the opposite side of the mounting plate from the green ground screw, lock the machine screws into place with lock nuts.
- 3.) Fasten the mounting plate to the outlet box using the two screws supplied with the outlet box.
- 4.) Spread the electrical wires so that the black wires are on one side of the outlet box and the white wires are on the other side.
- 5.) Grounding instructions:
 - A.) On fixtures where mounting plate is provided with a green ground screw and two raised dimples, Wrap ground wire from outlet box around green ground screw and tighten.
 - B.) On fixtures where mounting plate is provided with a green ground wire attached. Connect mounting plate ground wire to ground wire from outlet box with wire connector(not provided).
If fixture is provided with ground wire. Connect fixture ground wire to ground wire from outlet box with wire connector (not provided). After following the above steps. Never connect ground wire to black or white power supply wires.
- 6.) To make electrical connections: Connect the white wire(s) from the fixture to the white wire of this outlet box. Connect the black wire(s) from the fixture to the black wire of the outlet box. NOTE: Black wire from outlet box may be red, round & smooth and/or have copper conductor. White wire from outlet box may be square & ridged and/or have a silver conductor.
After wires are connected, tuck them carefully inside outlet box.
- 7.) Place fixture against mounting surface allowing the machine screws to pass through the fixture canopy. Secure with cap nuts.