

## ASSEMBLY INSTRUCTION

### DESCRIPTION Pier

Thank you for purchasing this quality product. Be sure to check all packing material carefully for small parts which may have some loose inside the carton during shipment. Identify and count all parts and compare with the parts List Below:

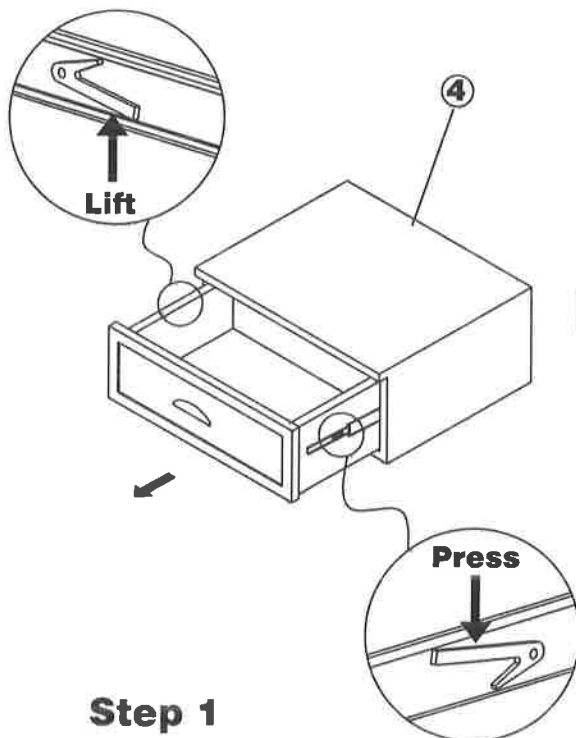


#### HARDWARE LIST

NO.	SKETCH	HARDWARE	QTY
A		Bolt 1/4" x 1-1/4"	14 pcs
B		Bolt 1/4" x 3/4"	4 pcs
C		Spring Washer	18pcs
D		Flat Washer	18 pcs
E		Allen Key 4mm	1 pc
F		L Bracket	2 pcs
G		Screw	16 pcs
H		Shelf Support	12 pcs

#### PARTS LIST (IFNEEDED)

NO.	SKETCH	PART	QTY
①		Left Side Frame	1 pc
②		Right Side Frame	1 pc
③		Bottom Panel	1 pc
④		Drawer Box	1 pc
⑤		Top	1 pc
⑥		Shelf (1)	1 pc
⑦		Shelf (2)	1 pc
⑧		Shelf (3)	1 pc
⑨		Back Panel	1 pc



**NOTE: DO NOT TIGHTEN ALL THE BOLTS UNTIL THEY ARE INSTALLED IN CORRESPONDING HOLES!**

# ASSEMBLY INSTRUCTION

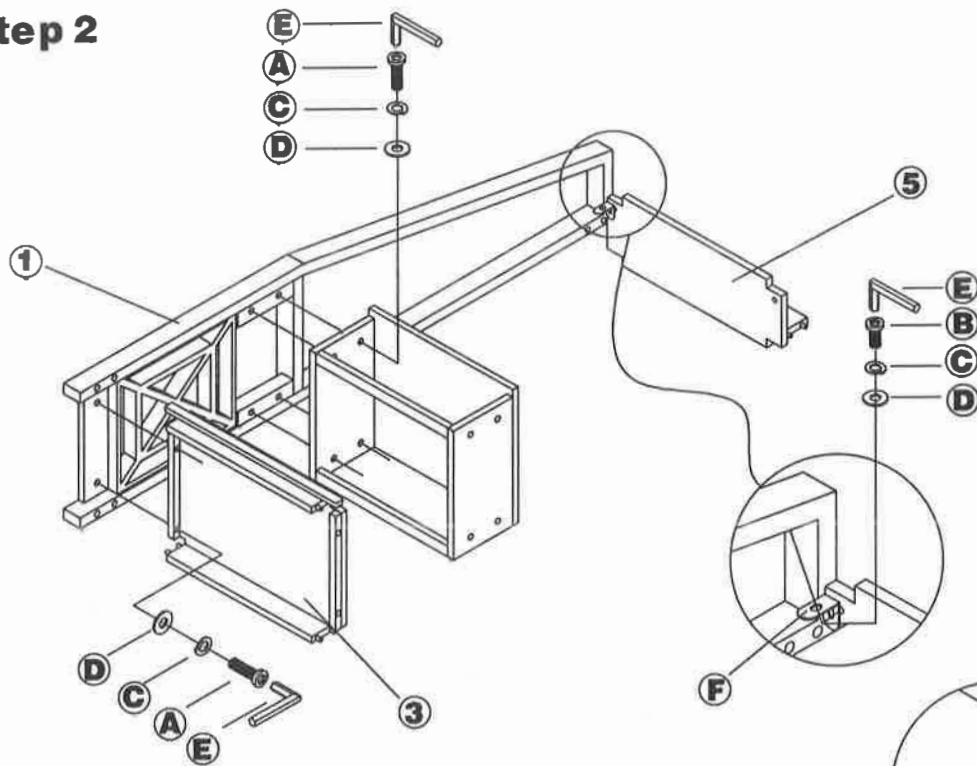
ITEM # \_\_\_\_\_

DESCRIPTION \_\_\_\_\_

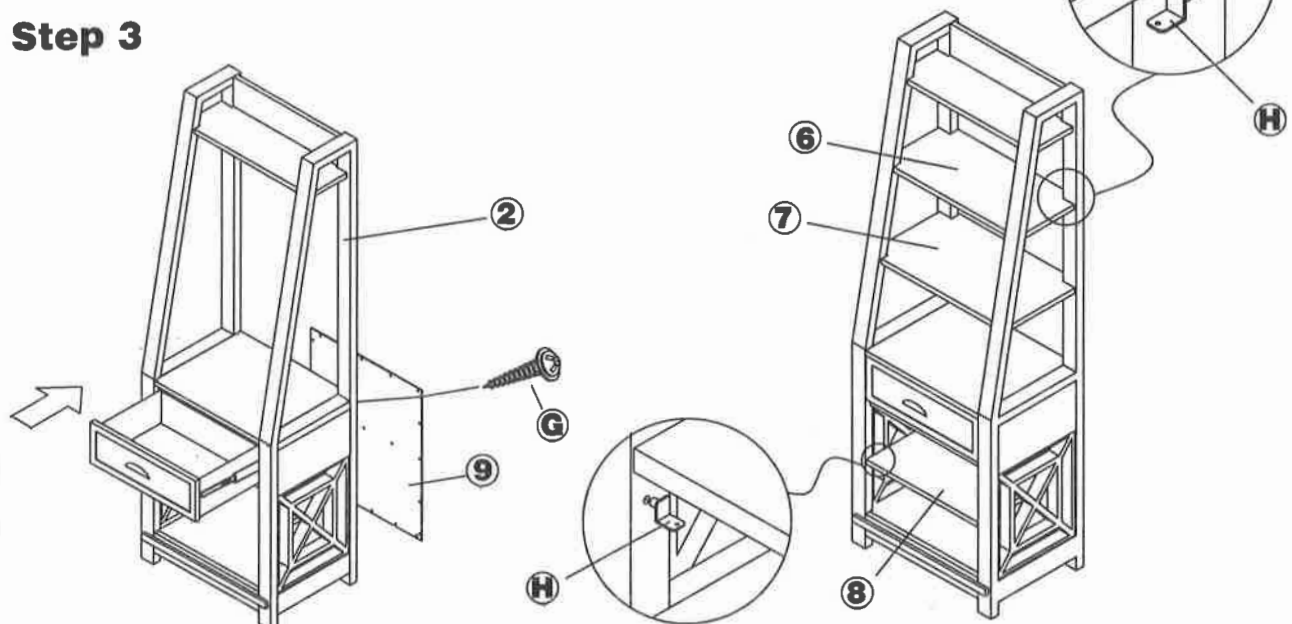
Pier \_\_\_\_\_

Thank you for purchasing this quality product. Be sure to check all packing material carefully for small parts which may have some loose inside the carton during shipment. Identify and count all parts and compare with the parts List Below:

## Step 2



## Step 3



**NOTE: DO NOT TIGHTEN ALL THE BOLTS UNTIL THEY ARE INSTALLED IN CORRESPONDING HOLES!**