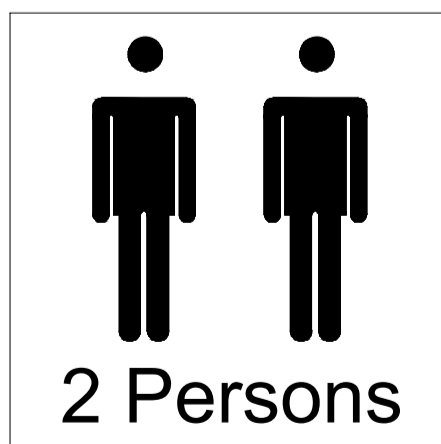
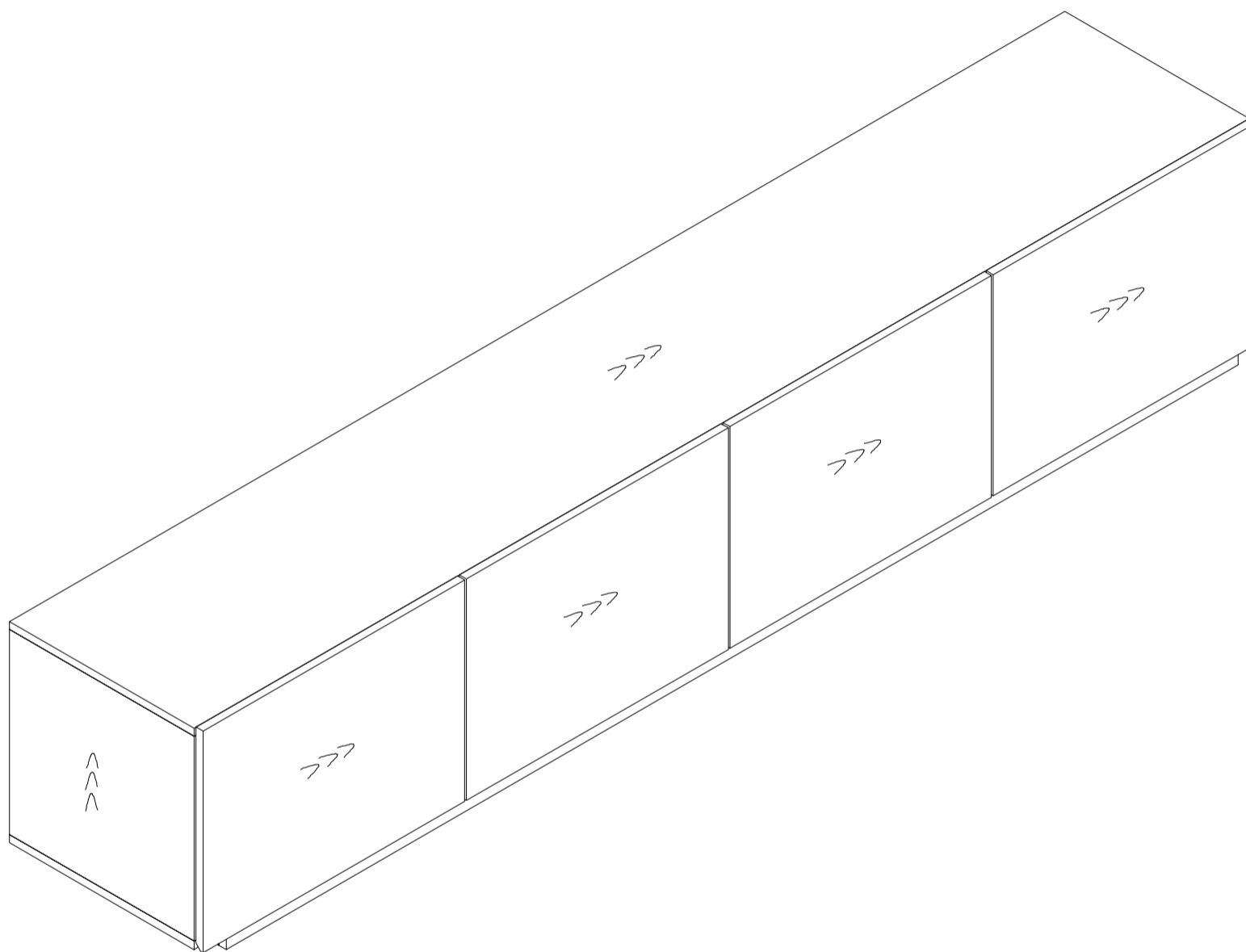


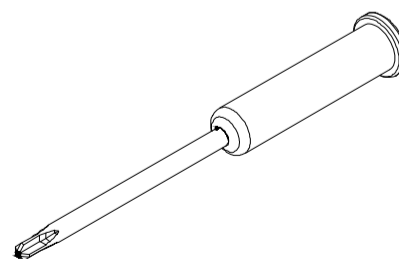
Installation

Product Manual

SKU: DS02-0042-MT4



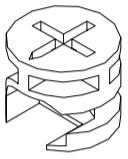
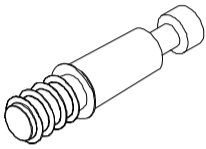
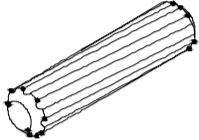
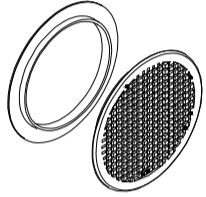
Tools

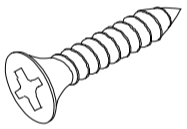
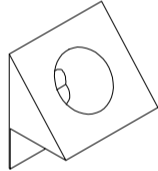
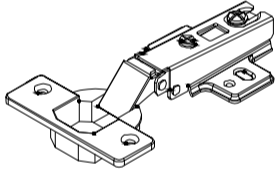


Cross Screwdriver

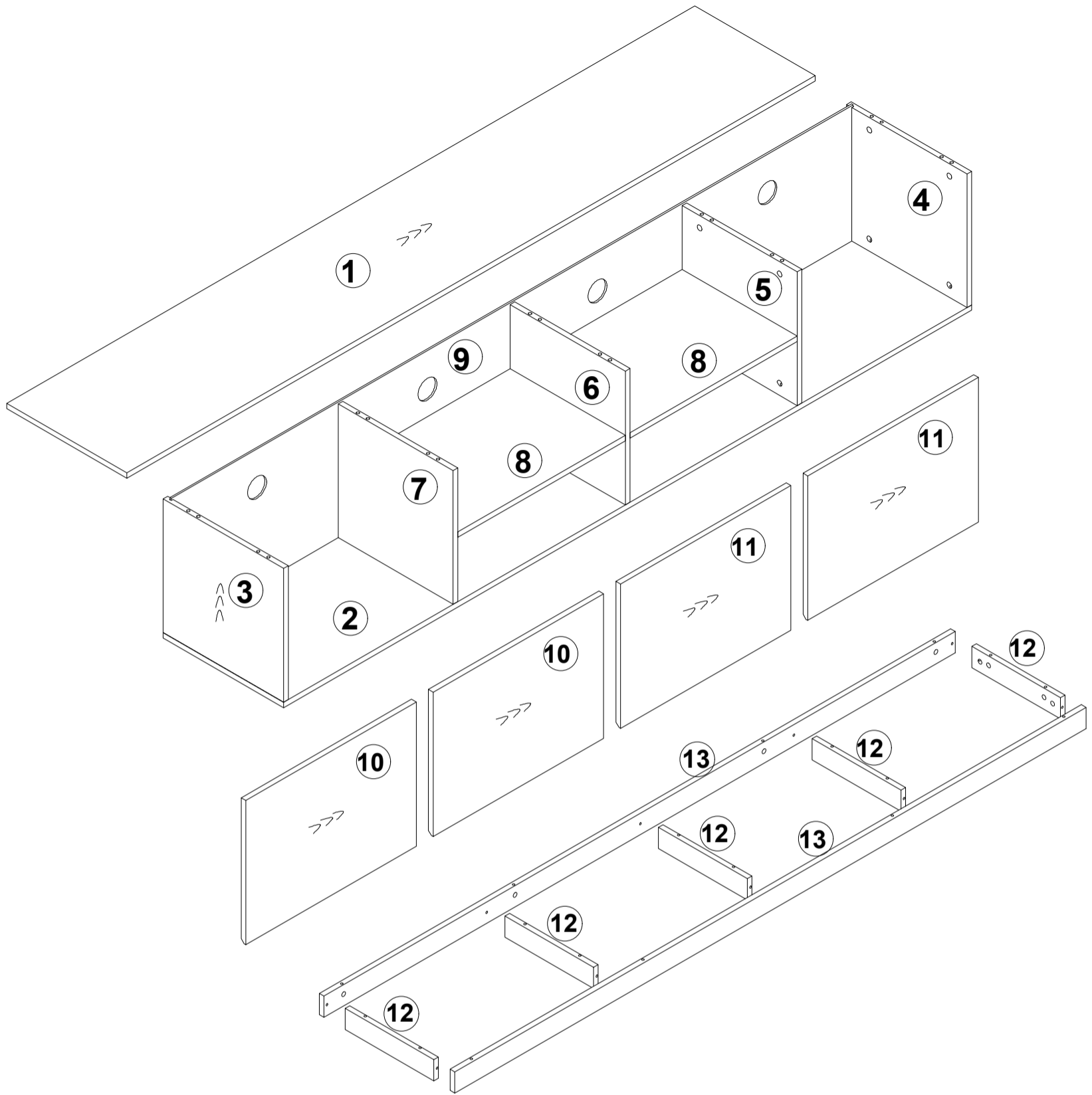
If you have any questions or concerns, please contact us:
Kevencindyyy@outlook.com

Hardware List

A	56 PCS	B	56 PCS	C	20 PCS	D	4 PCS
							
Ø15*12mm		Ø6*25mm		Ø8*35mm		Ø60	

E	12 PCS	F	12 PCS	G	8 PCS
					
M3.5*14		12*10mm		Ø35/90°	

H	Spare Parts	
A*3	B*3	C*2
E*6	F*2	



1 1 PC	2 1 PC	3 1 PC	4 1 PC	5 1 PC
6 1 PC	7 1 PC	8 2 PC	9 1 PC	10 2 PC
11 2 PC	12 5 PC	13 2 PC	0042-MT4 page 3	

Matters Need Attention

If you have any questions or concerns, please contact us:
Kevencindyyy@outlook.com

During Installation

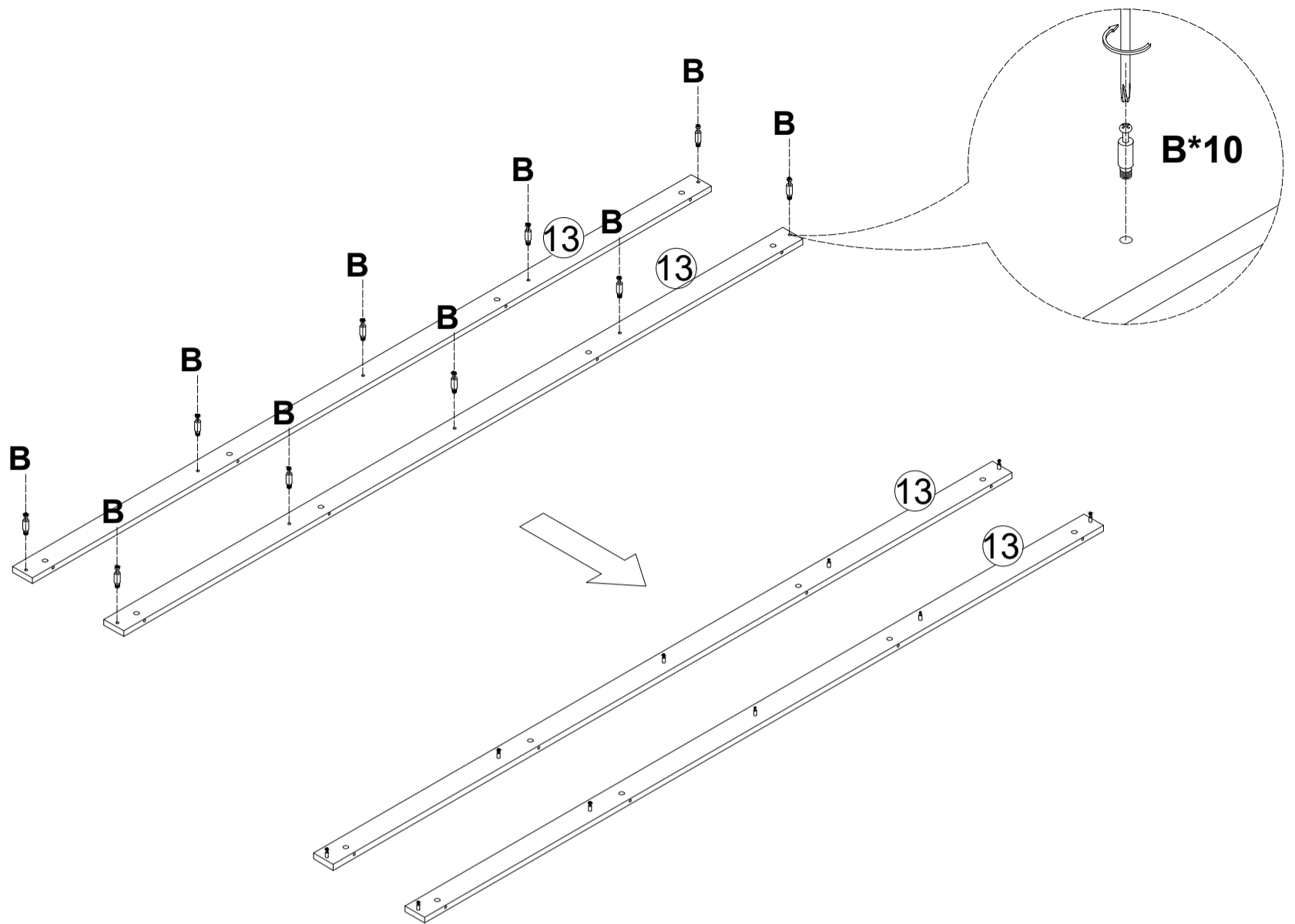
1. Do not discard packing material until assembly is complete, as small parts may loosen inside the carton during shipping. If there is a missing part, please contact our after-sales team.
2. Please assemble this item on soft surfaces such as carpets to protect the finish.
3. Pay attention to stability when assembling to avoid falling or scratching.


Cleaning and Maintenance

1. To protect the finish, avoid chemicals and household cleaners.
2. Keep away from the heat source to prolong the service life.
3. Wipe off any remaining liquid on the surface with a damp cloth.

Step 1

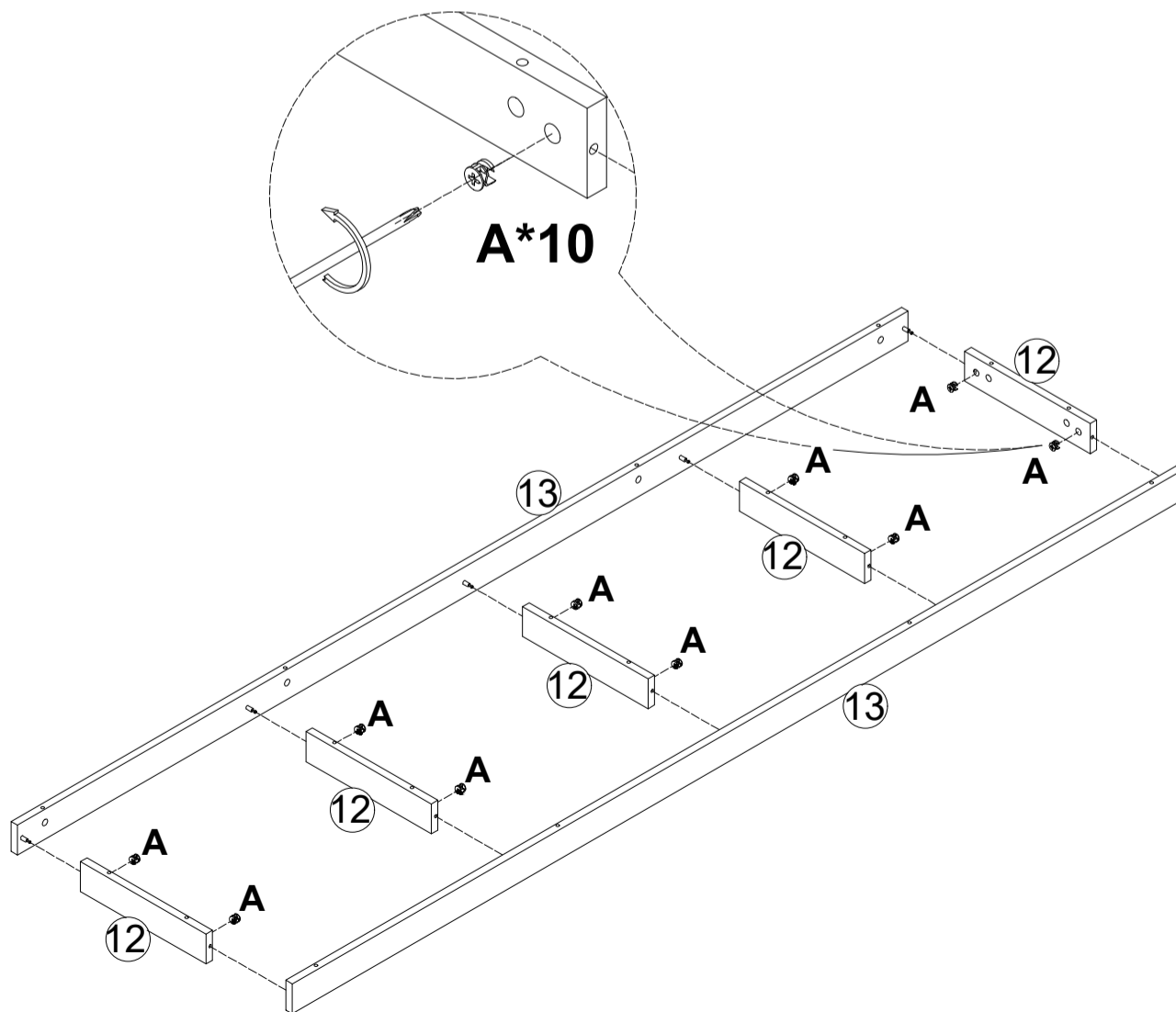
Install accessory B onto Board 13




B	10 PCS
	
Ø6*25mm	

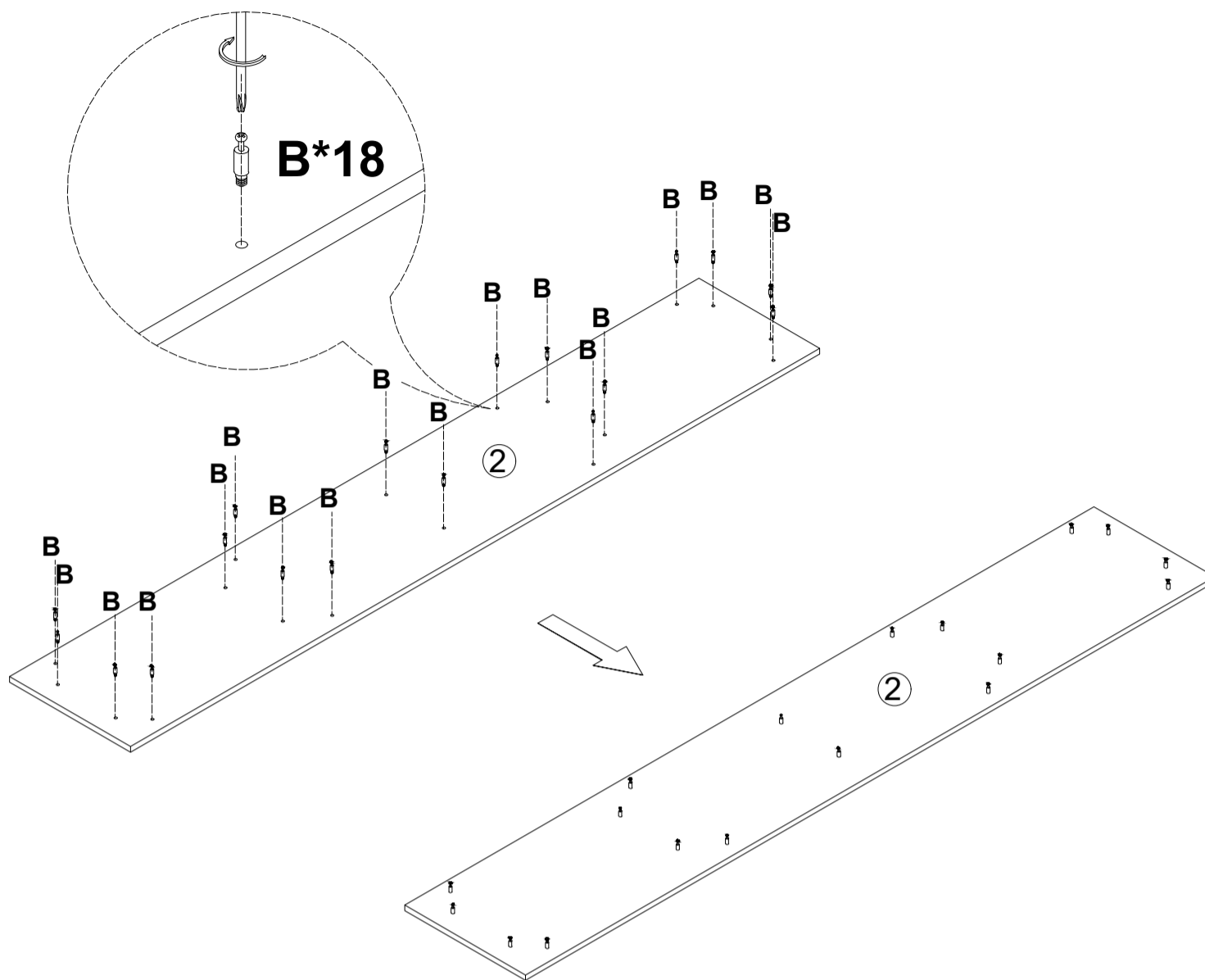
Step 2

Attach Board 12 to Board 13 and secure with accessory A



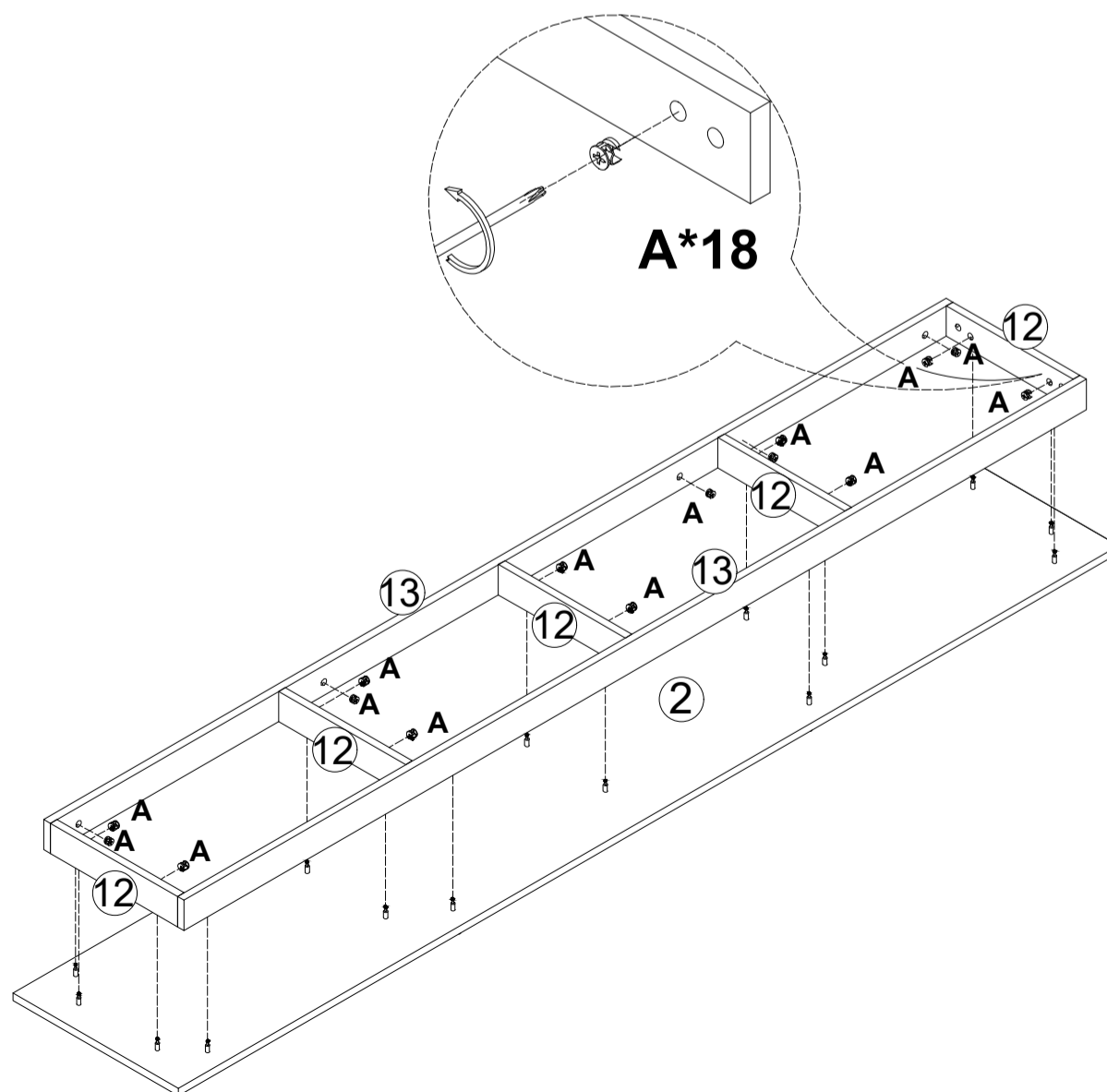
A	10 PCS
	
Ø15*12mm	

Install accessory B onto Board 2



B	18 PCS
Ø6*25mm	

Attach Boards 12 and 13 to Board 2 and secure with accessory A

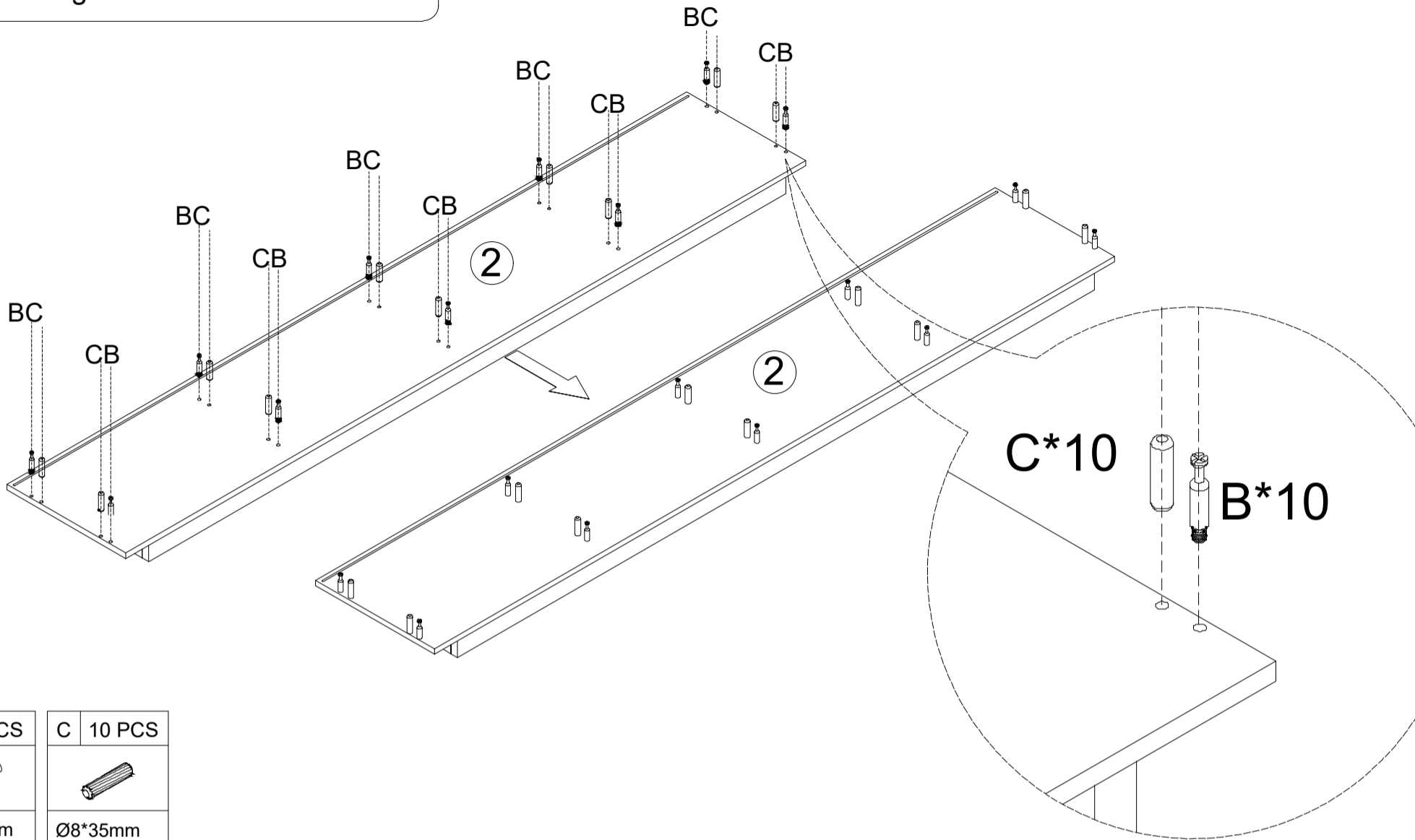


A	18 PCS
Ø15*12mm	

Step 5

Install accessories B and C onto Board 2

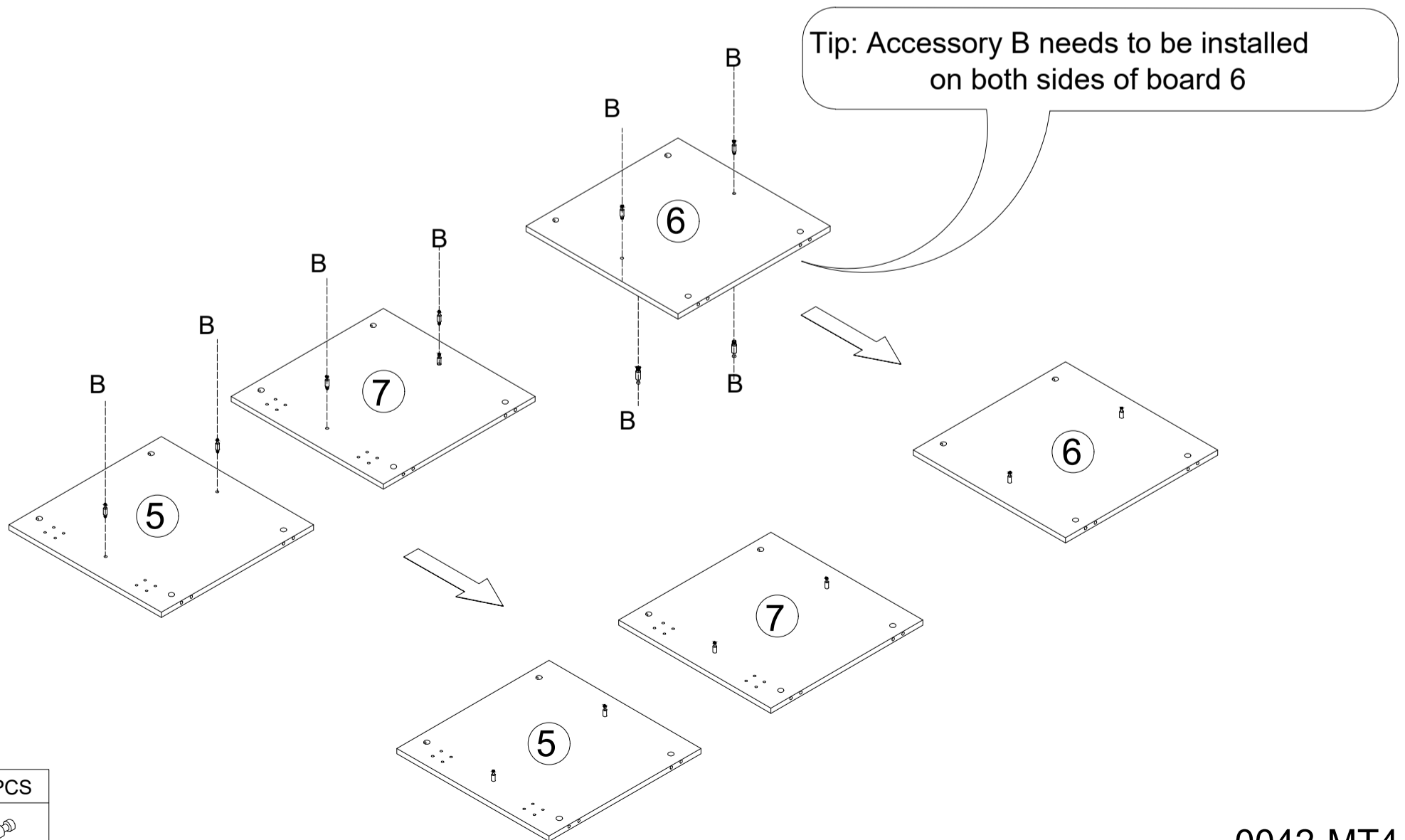
Tip: Please install accessories B and C on the grooved surface



B	10 PCS	C	10 PCS
Ø6*25mm		Ø8*35mm	

Step 6

Install accessory B onto Boards 5, 6, and 7

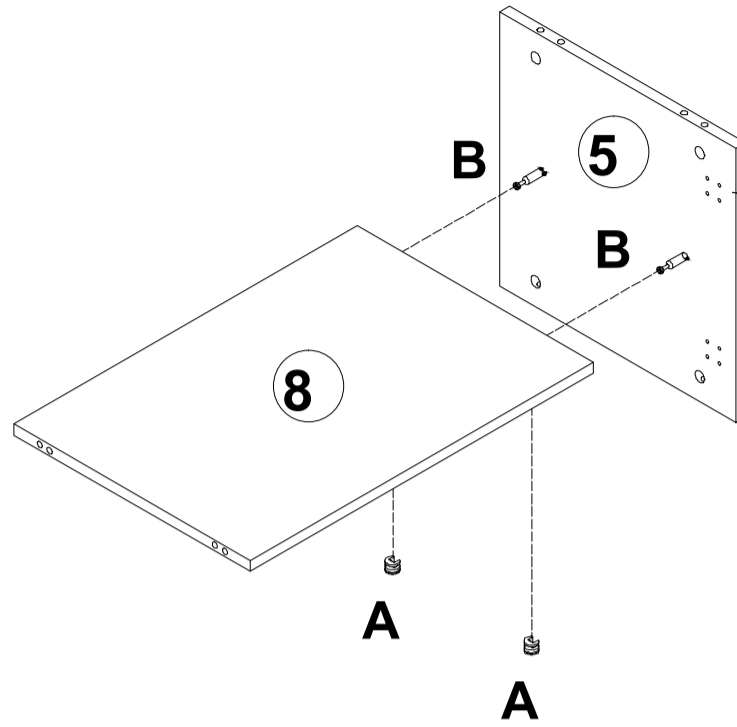



B	8 PCS
Ø6*25mm	

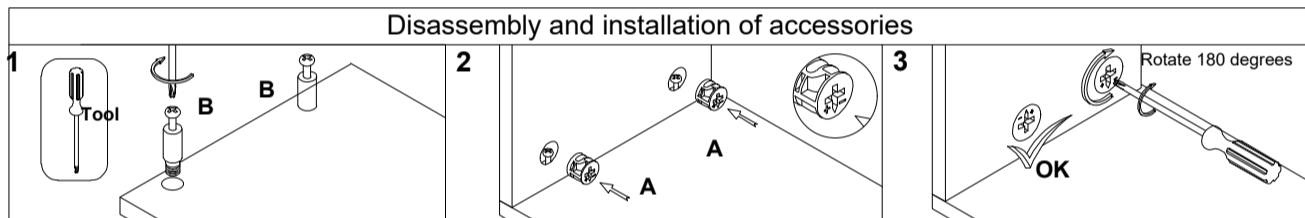
Step 7 Install board 8 onto board 5 and secure it with accessory A

Important: Please assemble boards 5,6,7,and 8 in the order shown in the instructions. Installing them out of sequence may cause hole misalignment and improper assembly

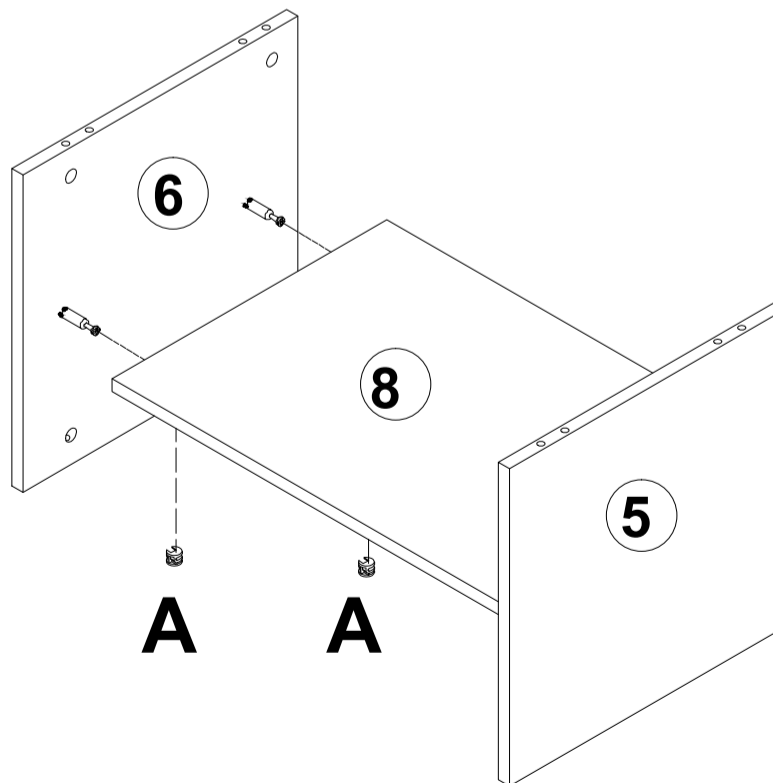
Tip: There is a hole for installing the cabinet door here, which should be installed facing forward




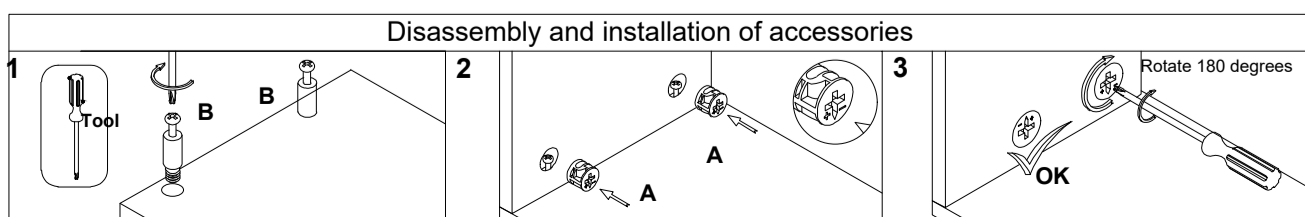
A	2 PCS
	
Ø15*12mm	



Step 8 Install board 6 onto board 8 and secure it with accessory A

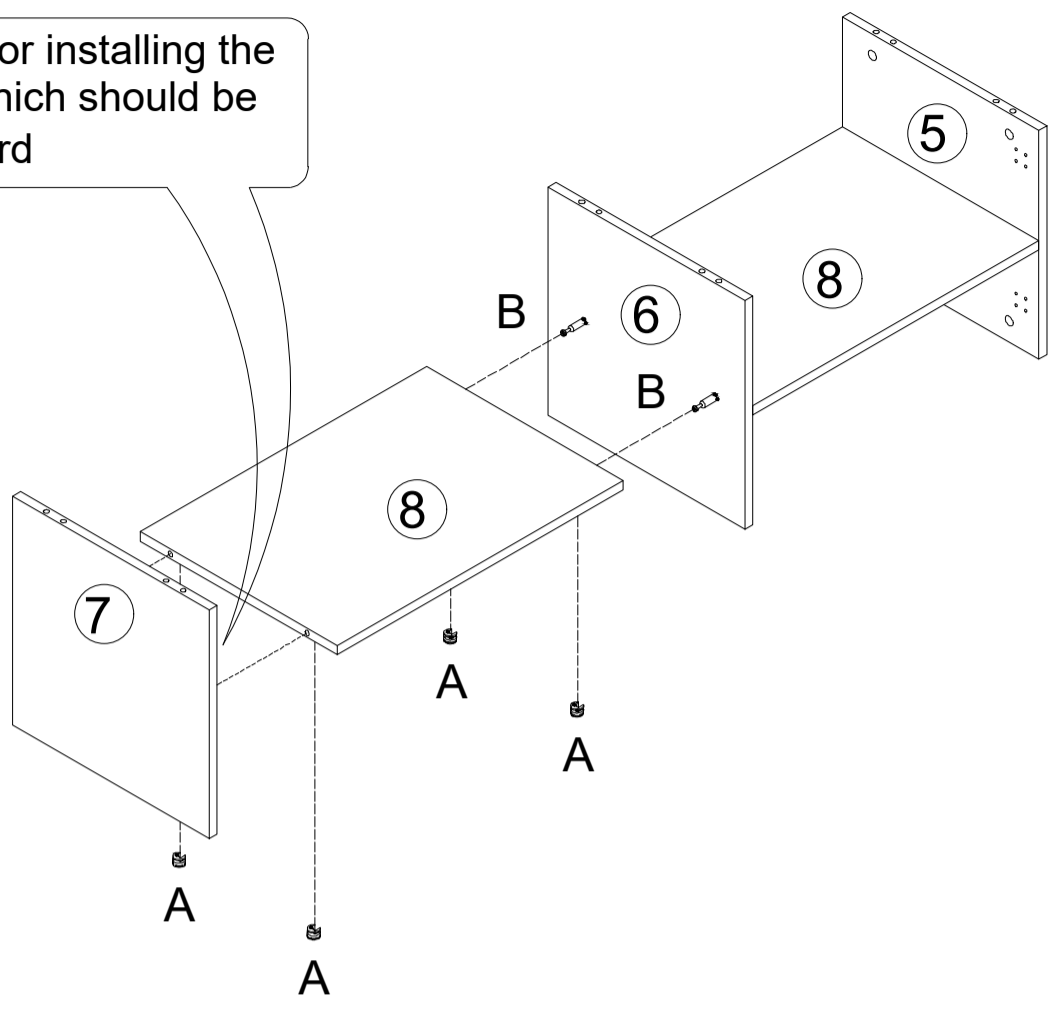



A	2 PCS
	
Ø15*12mm	

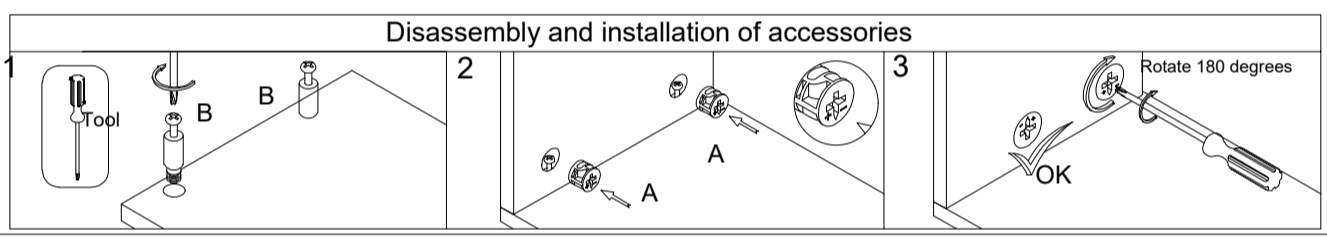


Step 9 Install board 8 onto board 6, then install board 7 onto board 8.
Secure with accessory A

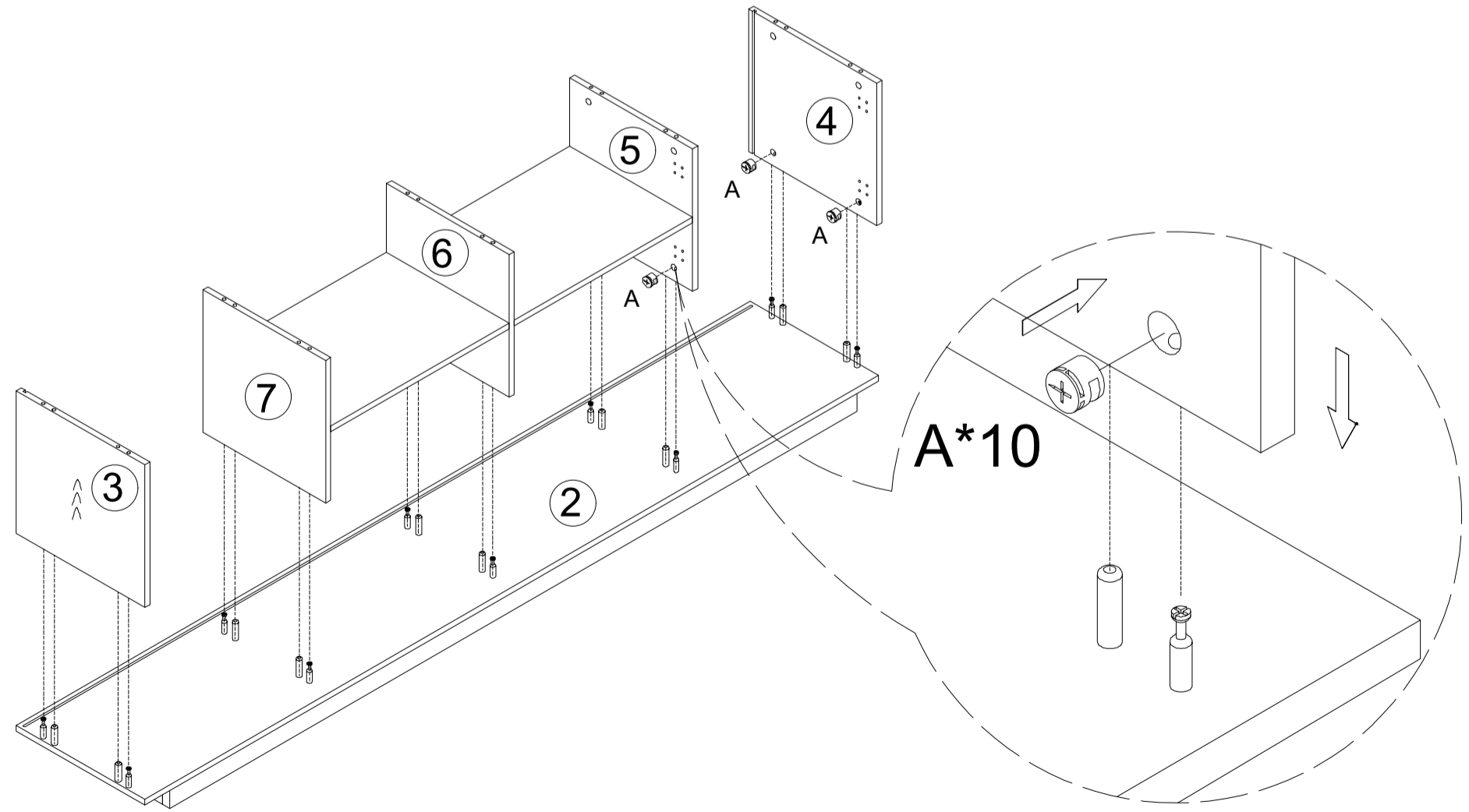
Tip: There is a hole for installing the cabinet door here, which should be installed facing forward




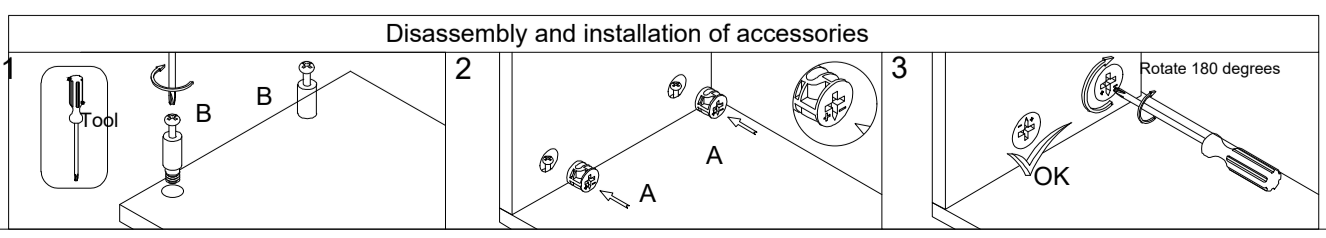
A	4 PCS
	
Ø15*12mm	



Step 10 Attach Boards 3, 4, 5, 6 and 7 to Board 2 and secure with accessory A

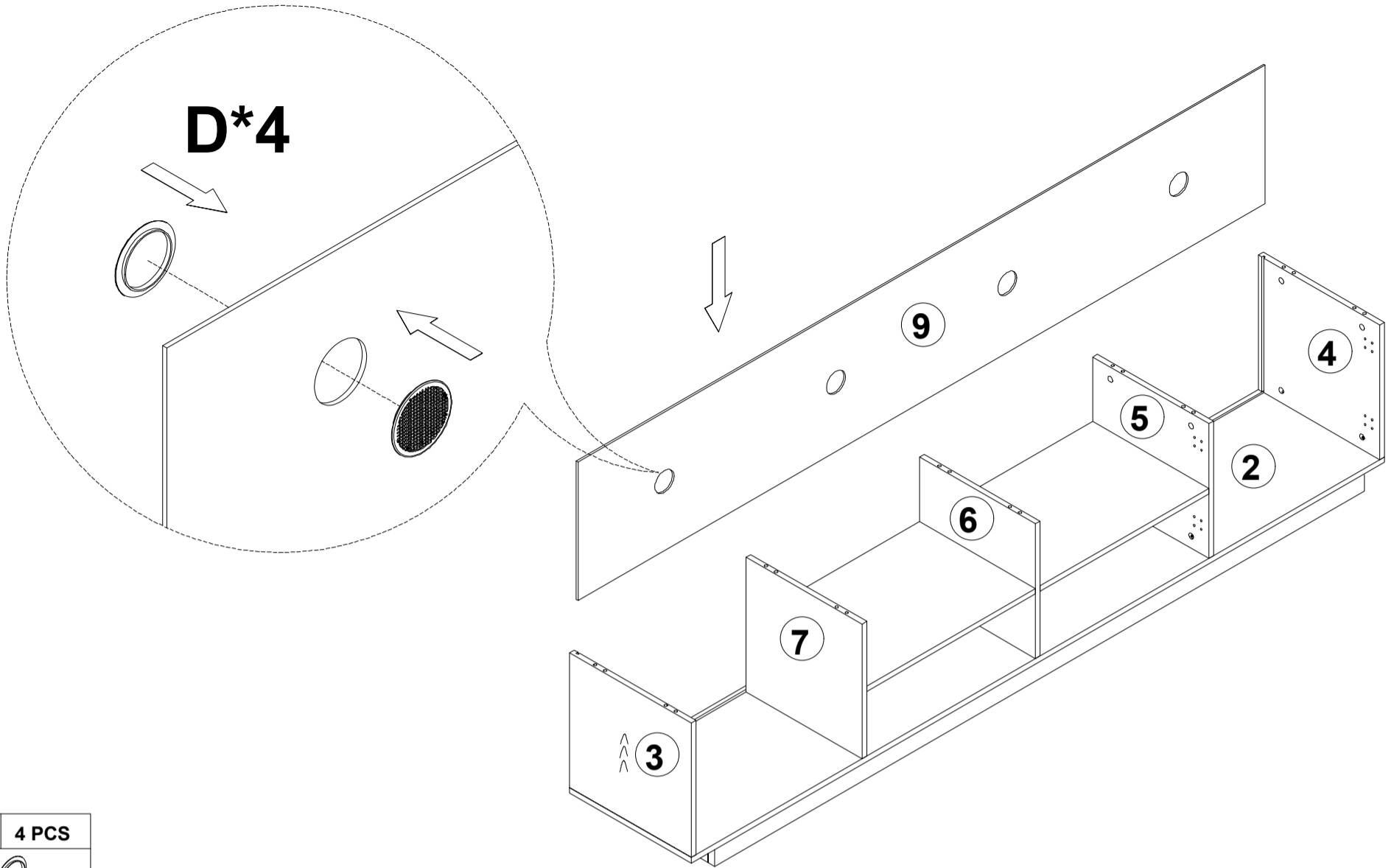


A	10 PCS
	
Ø15*12mm	



Step 11

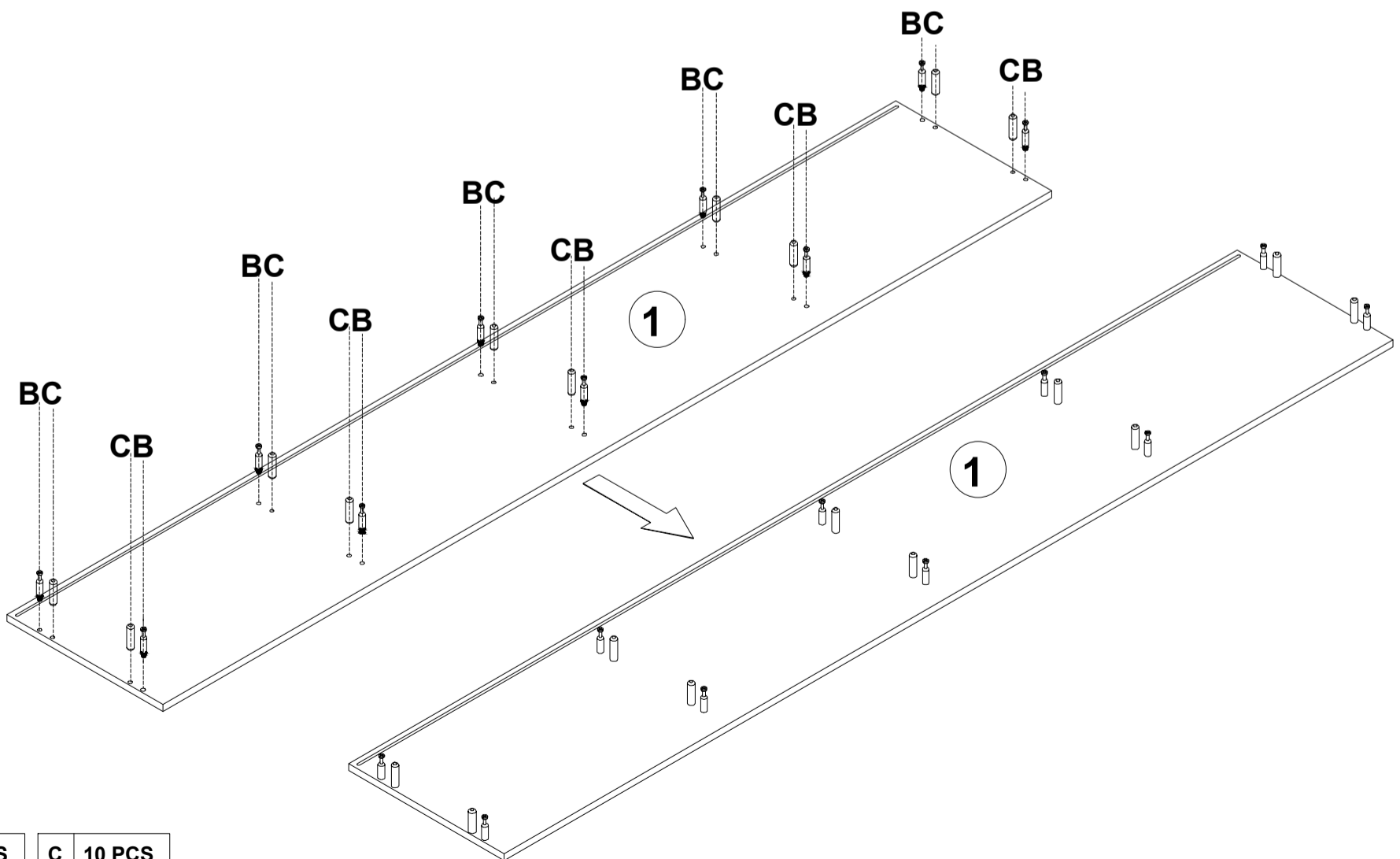
Install accessory D on Board 9, then insert Board 9 into the groove



D	4 PCS
Ø60	

Step 12

Install accessories B and C onto Board 1

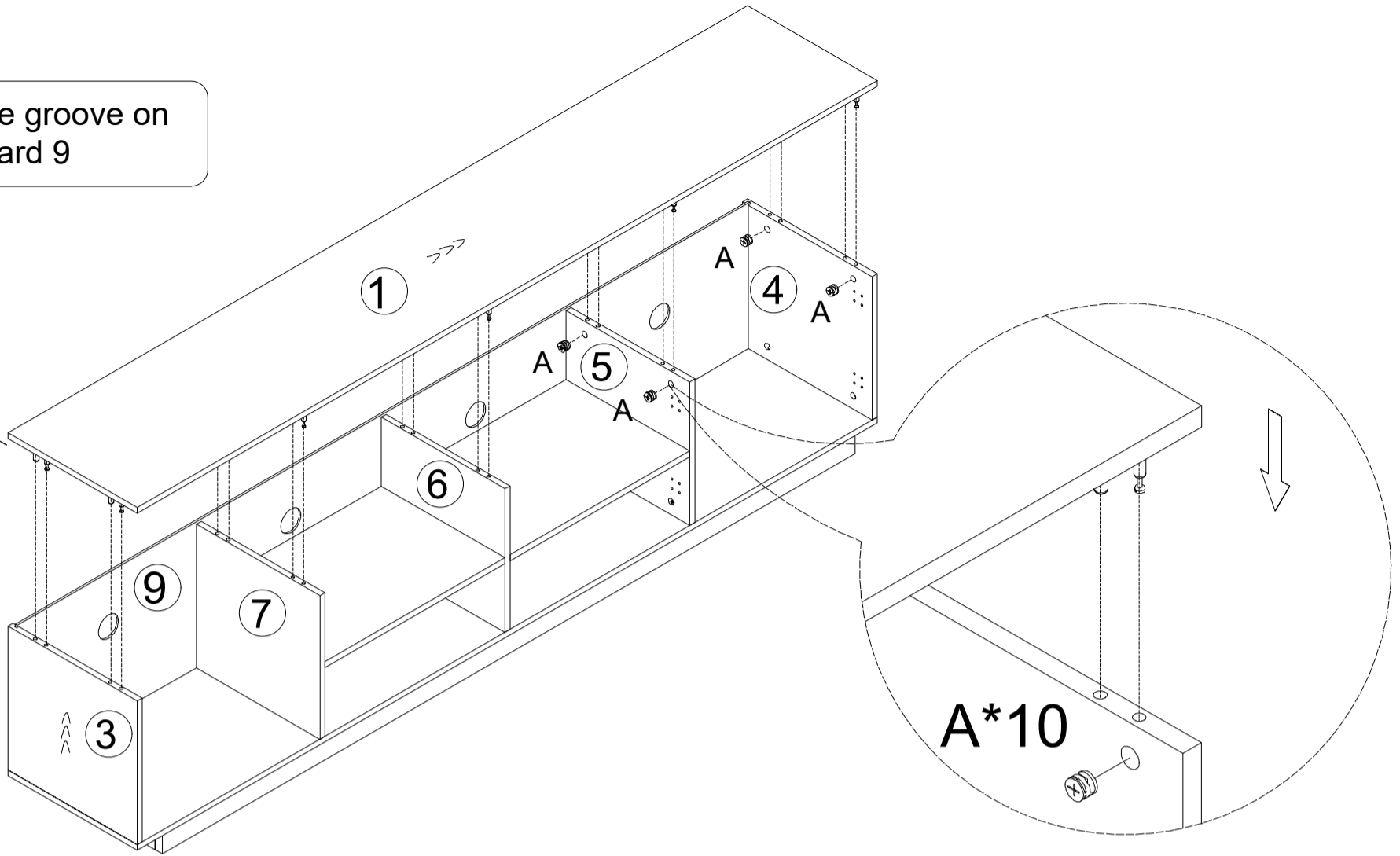


B	10 PCS	C	10 PCS
Ø6*25mm		Ø8*35mm	

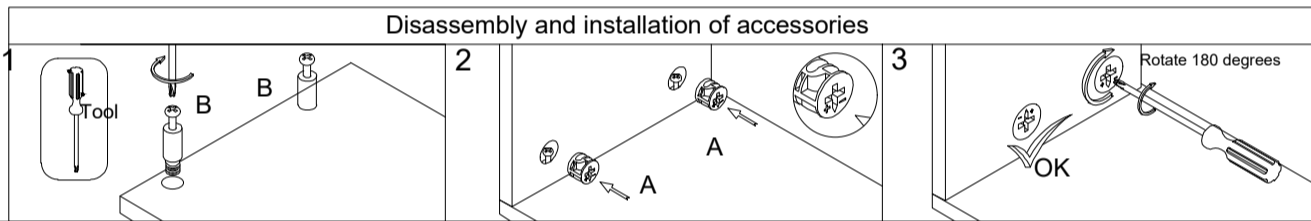
Step 13

Attach Board 1 to the assembled section and secure with accessory A

Tip: Attach the groove on Board 1 to Board 9

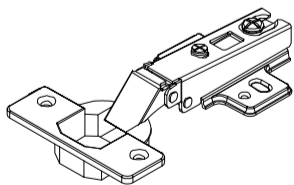


A	10 PCS
Ø15*12mm	

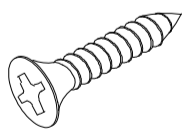


Step 14

Separate accessory G into two parts: G1 and G2



G1*8

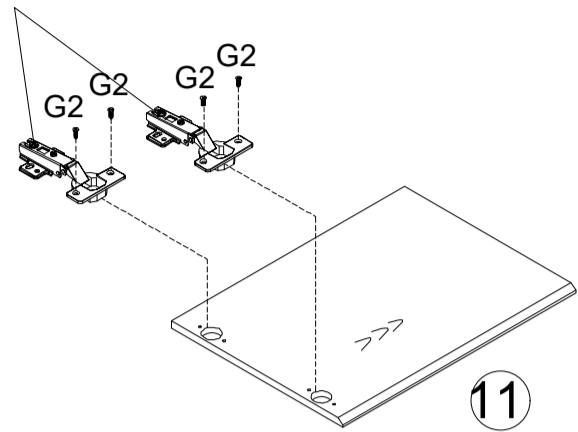


G2*48

G	8 PCS
Ø35/90°	

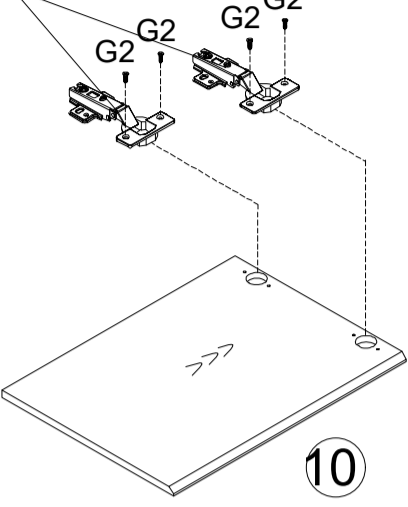
Step 15 Install accessory G1 onto boards 10 and 11, and secure it with accessory G2

G1*2

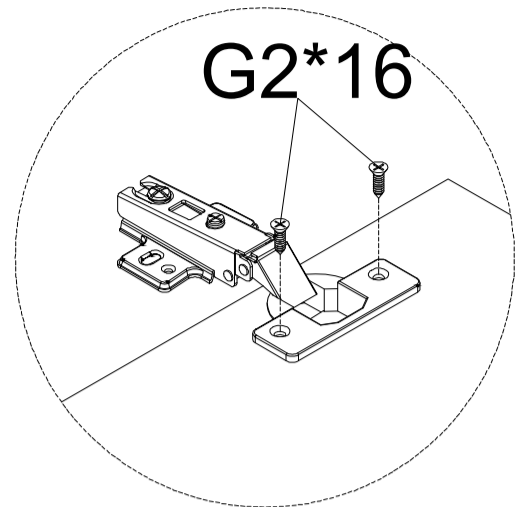


11

G1*2

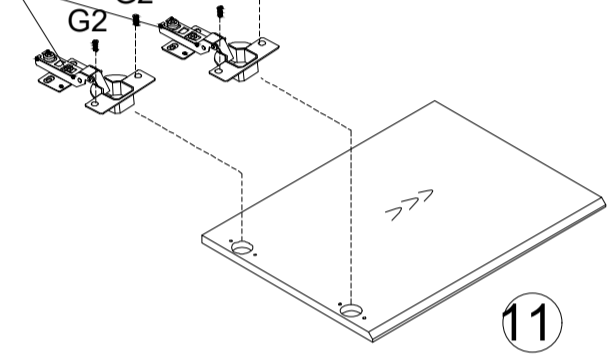


10



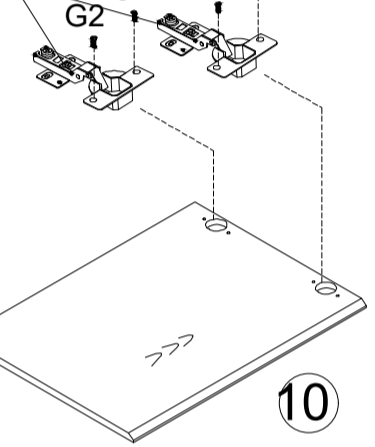
G2*16

G1*2

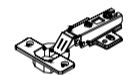



11

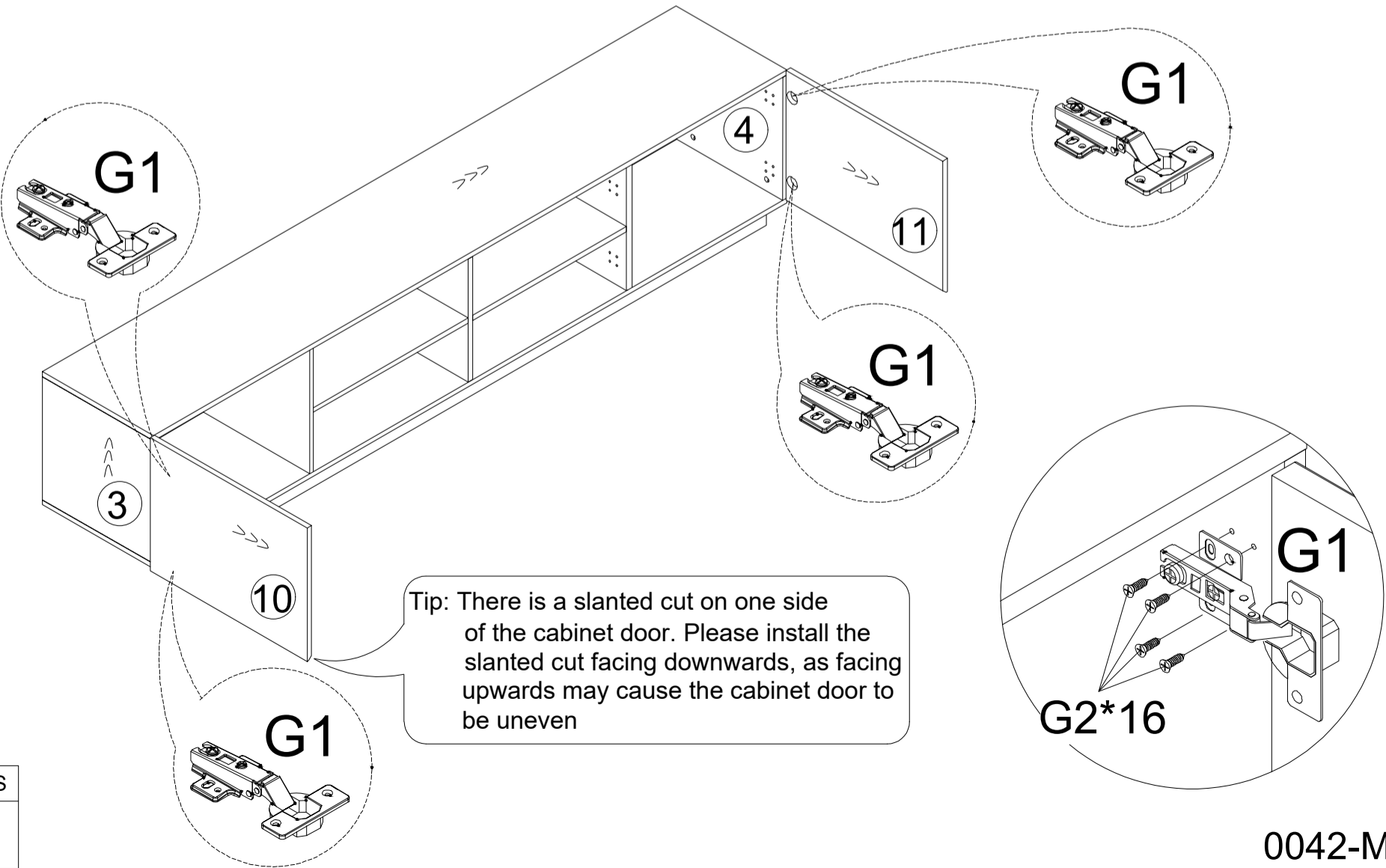
G1*2




10

G1	8 PCS	G2	16 PCS
			
Ø35/90°		M3.5*14	

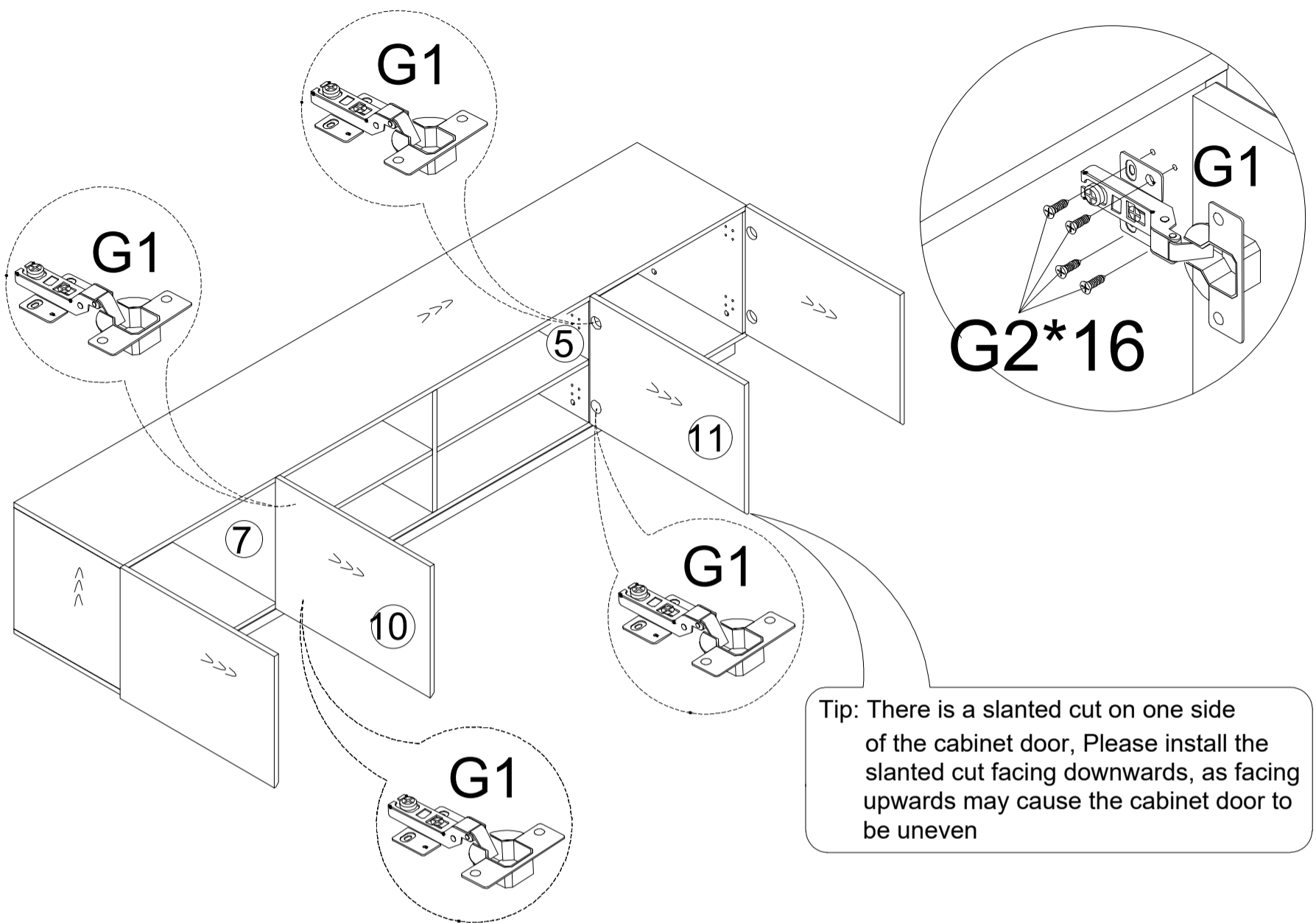
Step 16 Install board 10 onto board 3, and install board 11 onto board 4. Secure with accessory G2



G2	16 PCS
	
M3.5*14	

Step 17

Install board 10 onto board 7, and board 11 onto board 5.
Secure with accessory G2



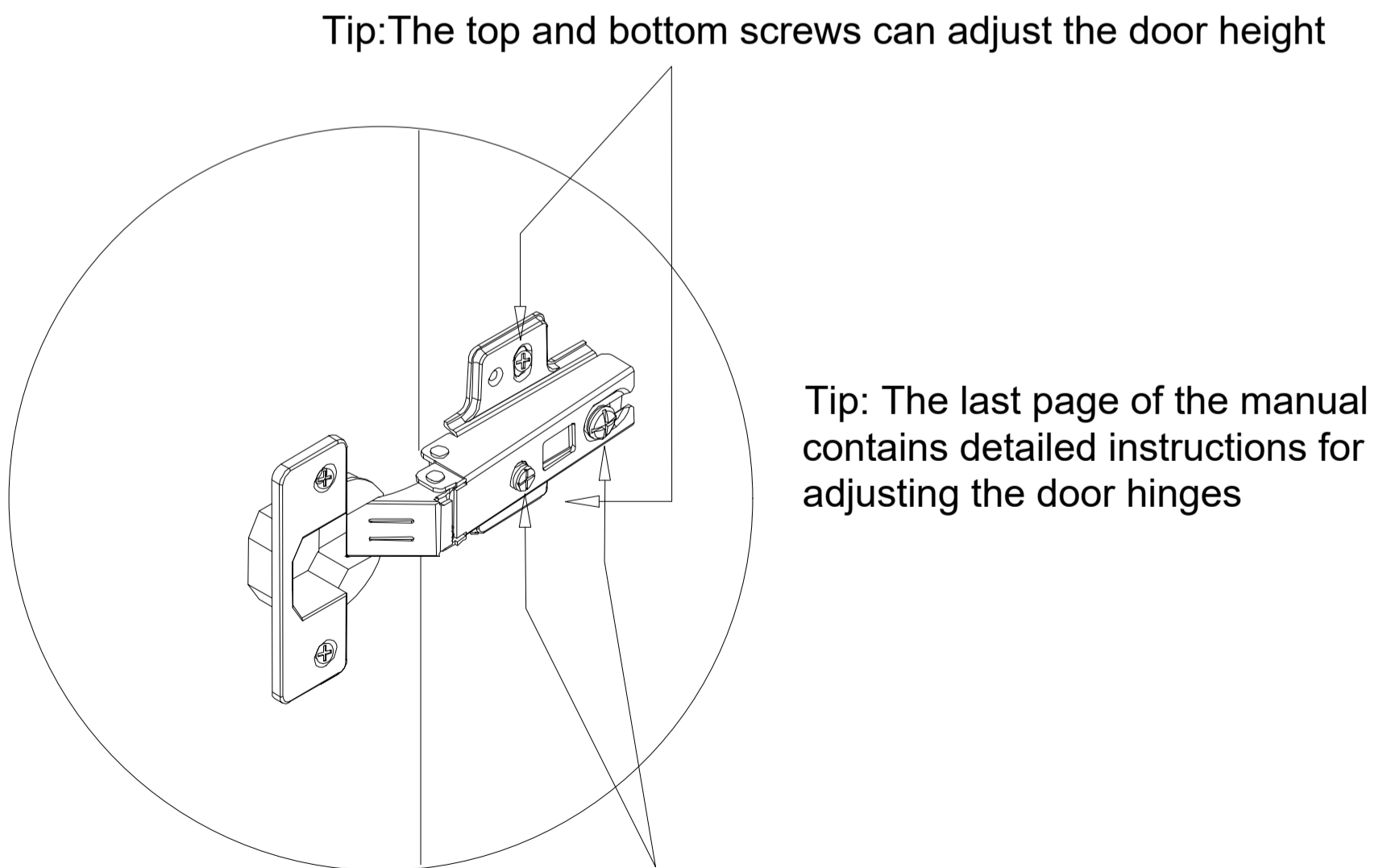
G2 16 PCS



M3.5*14

Step 18

The door position can be adjusted by turning the screws on
accessory G1

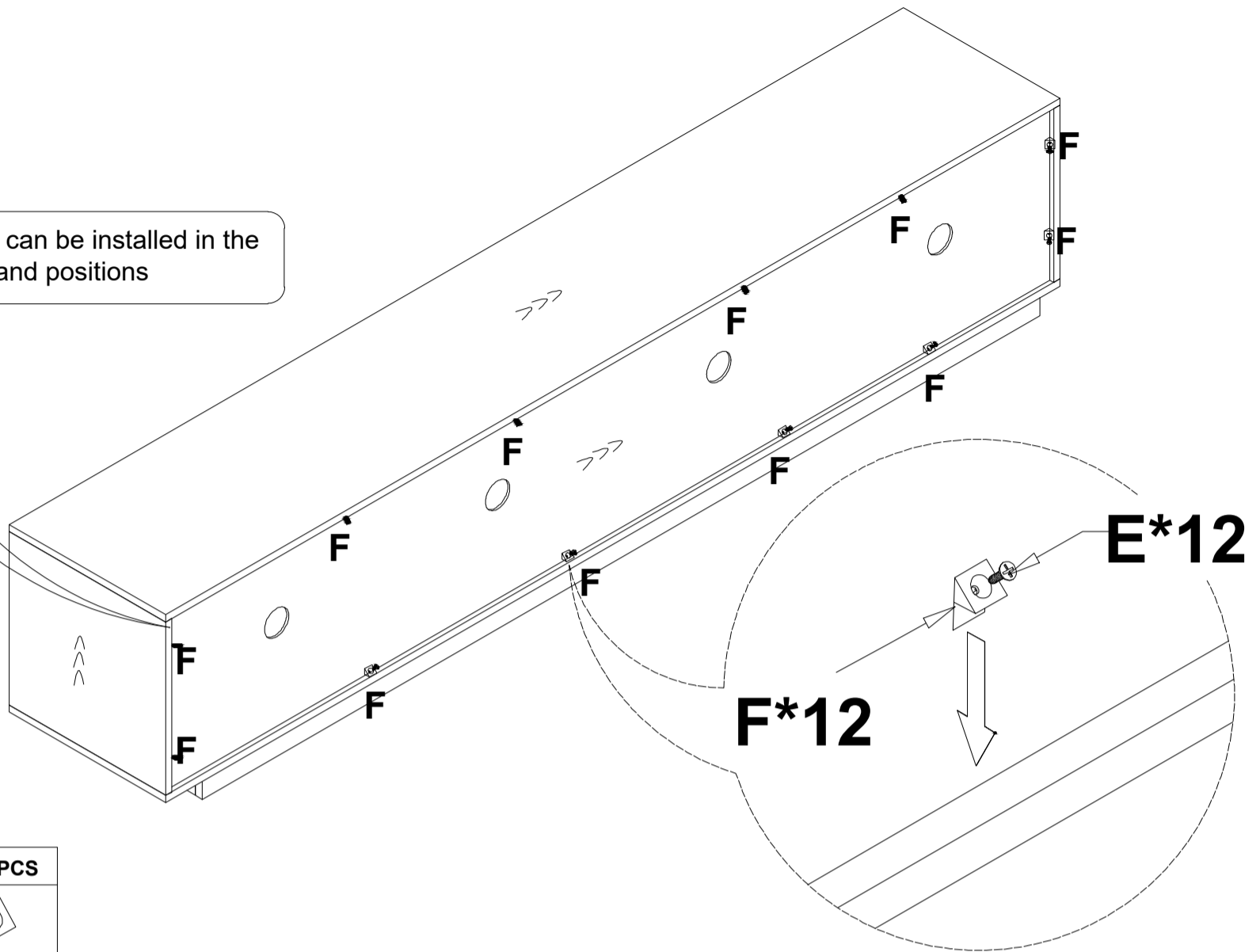




Tip: The two screws at the front and back can
adjust the gap between the door panel

Step 19

Install accessory F onto the back of the TV cabinet and secure with accessory E

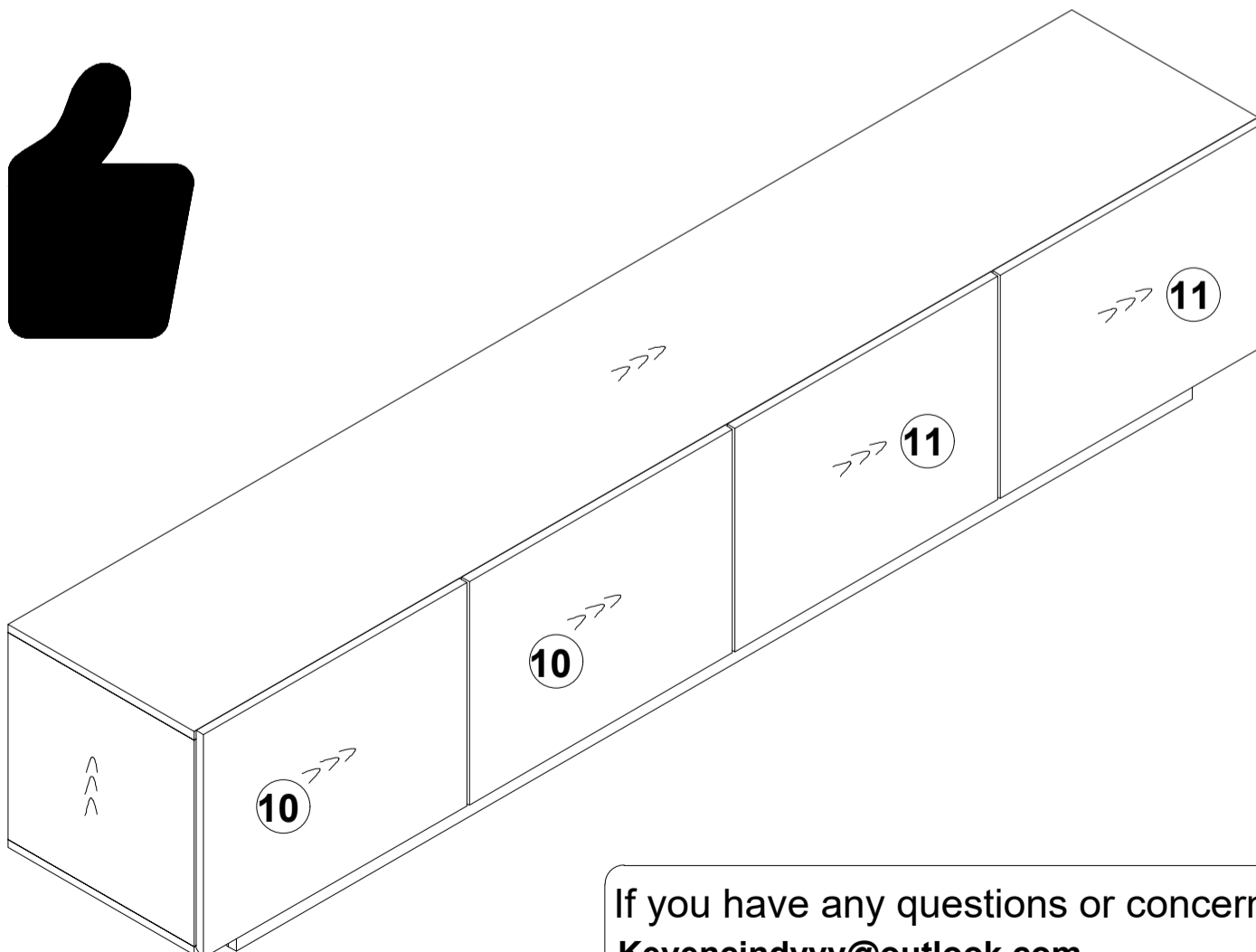
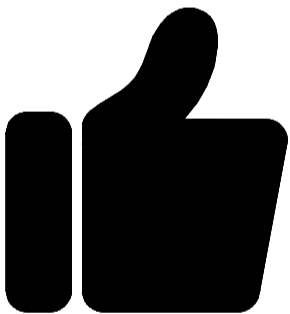
Tip: Accessory F can be installed in the desired quantity and positions



E	12 PCS	F	12 PCS
			
M3.5*14		12*10mm	

Step 20

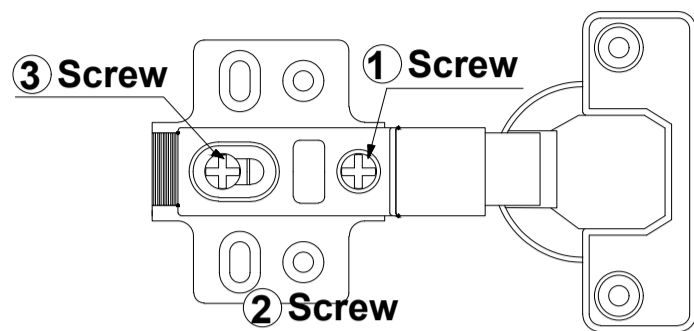
**Congratulations! The assembly is complete.
Thank you for your hard work**



If you have any questions or concerns, please contact us:
Kevencindyyy@outlook.com

TV Cabinet Door Hinge Adjustment Guide

1. Hinge Structure Overview



- ① Left-Right Adjustment
(align door gaps)
- ② Up-Down Adjustment
(level door heights)
- ③ In-Out Adjustment
(move door closer to or farther from the cabinet)

2. Common Issues & Adjustment Methods

A. One door is higher than the other

What to Do: Use the up/down adjustment screw ② on the hinge base.

Slowly adjust one side at a time until both doors are level.

It's best to make small changes and check frequently.

B. The gap between the two doors is uneven

What to Do: Turn the left/right adjustment screw ① on the hinge arm to move the door left or right. This helps even out the center gap between the two doors.

C. The door won't close properly or pops open

What to Do: Use the depth adjustment screw ③ to move the door in or out.

This helps the door close smoothly and stay shut.

3. Suggested Adjustment Steps

1. Make sure the cabinet is placed on a level surface to avoid visual misalignment caused by uneven flooring.
2. Adjust the doors one by one—start with height, then fine-tune the gap spacing.
3. After adjustment, gently open and close the doors to ensure they move smoothly without sticking.

4. Helpful Tips

1. Use a Phillips screwdriver for easier and more precise adjustments.
2. Adjust both doors together for a more balanced and symmetrical look.
3. If the doors are warped or misaligned beyond hinge adjustment, please check the door panels or cabinet structure first.