

Installing a Weathervane on a Cupola Not Manufactured by Good Directions Installation Instructions

Needed for Installation

1 - 2 x 4

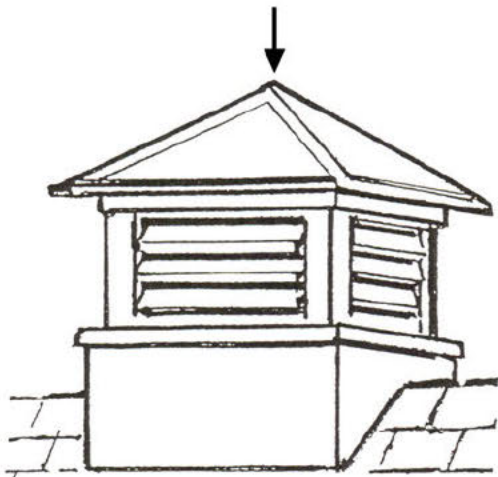
1 - Cupola-Weathervane Mounting Bracket

1 - Mounting and Finishing Screws

Note

Good Directions Cupolas come weathervane ready with an internal mounting bracket installed. These instructions are for non-Good Directions cupolas.

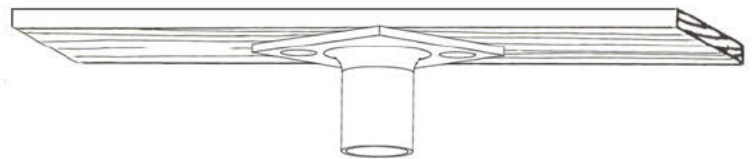
1. Drill a 3/4" hole on the top of the cupola



2. Cut 2 x 4 cross piece to length to inner cupola dimension and drill a 3/4" hole in the center.



3. Fasten Cupola-Weathervane Mounting Bracket to center 2 x 4 (concentric with roof cutout and cross piece hole) as shown.



4. Add cross-piece inside cupola.
Cross piece can go above or below louvers, depending on weathervane size. If the cupola is already on a roof, remove the top to access interior.

5. Insert cupola rod into cupola roof and mounting bracket.

6. Add caulk around weathervane rod, and add finishing nails to the ends of the 2x4.

