

# ASSEMBLY INSTRUCTIONS: Model WI7909WH-N White Nightstand



## PREPARATION & HARDWARE



**TIME ESTIMATE:**  
30–45 minutes.

### SURFACE:

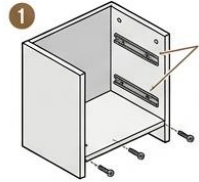


Assemble on a rug or the shipping cardboard to protect the wood finish.

### INVENTORY CHECKLIST:



## STEP 1: The Side Panels & Glides



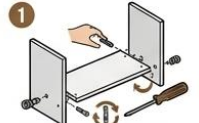
1 Check if drawer glides are pre-installed. If not, screw them into pre-marked holes.

Screw cam bolts into side panels and underside of top panel.

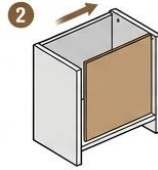
Insert wooden dowels into alignment holes on edges of side panels.



## STEP 2: Connecting the Core



1 Connect bottom shelf to the two side panels.

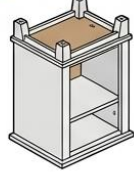


2 Slide back panel into the grooves at the rear of the frame.

**NOTE:** Ensure the finished side of the back panel is facing inward toward the cubby.

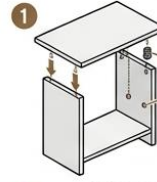
## STEP 3: Attaching the Base & Legs

1 Flip the unit upside down. 2 Attach the four legs to the bottom corners.



Most units of this style use a long bolt with a flat washer and a spring washer. Tighten these with the provided Allen wrench (or Phillips head). — before fully tightening.

## STEP 4: Securing the Top



1 Turn the unit back upright.

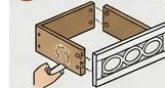
2 Align the top panel so the cam bolts drop into the side panels.



3 Reach into the top opening and tighten the cam locks located near the top of the side panels.

## STEP 5: Drawer Assembly

### 1 Sides to Front



Attach drawer sides to your drawer front.

### 2 Bottom Panel



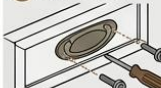
Slide drawer bottom into the grooves.

### 3 Back Panel



Screw drawer back into using wood screws.

### 4 Hardware



**Hardware**

## FINAL TOUCHES



Slide the completed drawer into the top slot. Ensure all connections are secure.



Peel off any identification stickers and wipe down with a damp cloth.



**Complete!**

\* Ready for Use