

Crane

DESIGN
FOR
BETTER
LIVING

ADORABLES INSTRUCTION MANUAL

ULTRASONIC COOL MIST HUMIDIFIER
1 GALLON | 3.78 LITER CAPACITY



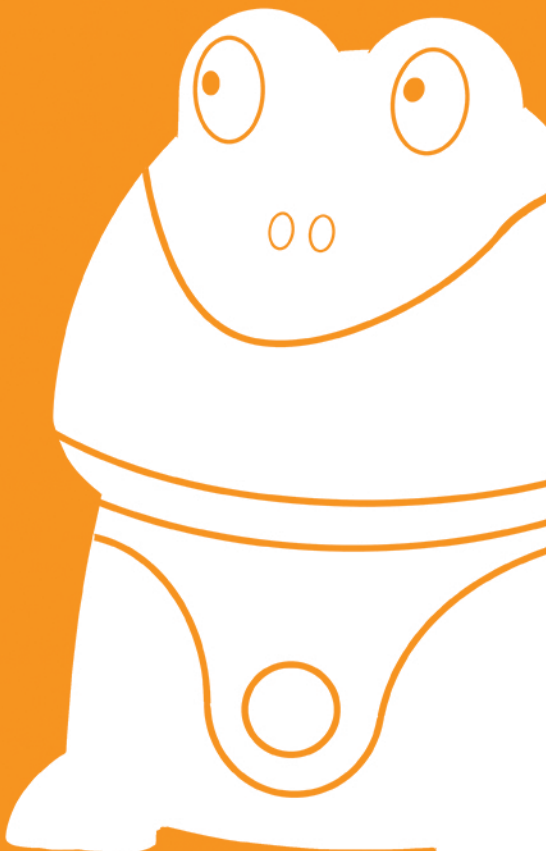
FOR MODELS:

EE-865
EE-3186
EE-3189
EE-3190
EE-3191
EE-4139
EE-4140
EE-5058
EE-6369
EE-7270
EE-8189
EE-8190
EE-8243
EE-8245
EE-8246
EE-8247
EE-8248
EE-8249

IF YOU HAVE ANY QUESTIONS ABOUT
THE OPERATION OF YOUR ULTRASONIC
HUMIDIFIER, PLEASE CONTACT CRANE
CUSTOMER CARE.

TOLL FREE: 888-599-0992
EMAIL: CUSTOMER-SERVICE@CRANE-USA.COM
LIVECHAT: WWW.CRANE-USA.COM

PLEASE READ & SAVE ALL INSTRUCTIONS TO ENSURE
THE SAFE AND EFFECTIVE USE OF THIS HUMIDIFIER.



SAVE YOUR DATED PROOF OF PURCHASE!

[you will need this in case of warranty]

staple
tape
or paperclip
your
receipt
HERE

TABLE OF CONTENTS

LIST OF MAIN PARTS	P. 2
TECHNICAL SPECIFICATIONS	P. 3
OPERATION & USE	P. 3
ASSEMBLY INSTRUCTIONS	P. 4
MAINTENANCE & STORAGE	P. 5
TROUBLESHOOTING / CUSTOMER CARE	P. 6
WARRANTY	P. 7



CRANE & SUSTAINABILITY

Crane USA is dedicated to your environment both inside and outside your home. We know that if cleaned and maintained properly, our products last for years helping to reduce unnecessary use of resources and emissions making new products.

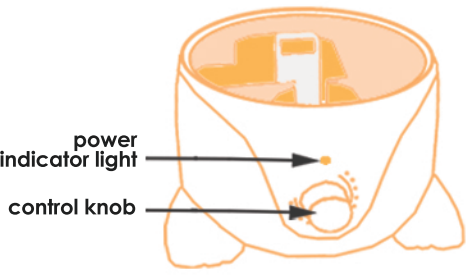
Your Crane Humidifier came packaged in all recycled cardboard. The manual you're holding is also from recycled materials with no added finishes or harmful dyes.

If the humidifier should no longer operate, please be sure to dispose of the unit in an environmentally friendly way by taking it to a public collection point.

**PLEASE DO NOT PLACE BROKEN HUMIDIFIERS
WITH YOUR REGULAR HOUSEHOLD WASTE.**

LIST OF MAIN PARTS

FIGURE 1 [humidifier base - front]



[top of water tank] **FIGURE 2**

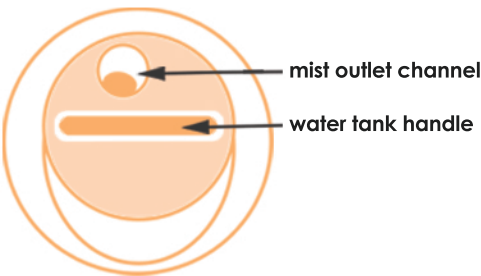


FIGURE 3 [humidifier base - top]

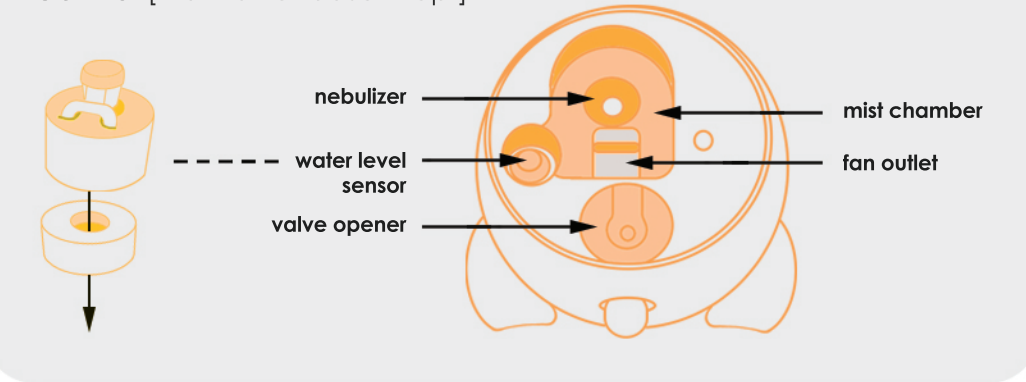
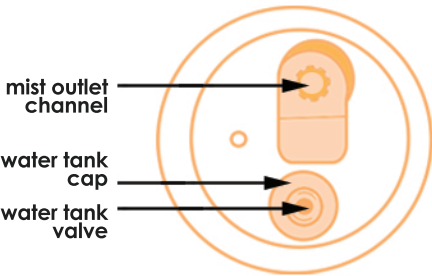
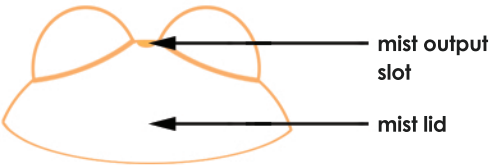


FIGURE 4 [bottom of tank]



[mist lid] **FIGURE 5**



NOTE: The shape of the mist lid, location of the mist output slot, number of indicator lights or shape of the water basin may vary depending on the humidifier's model.

TECHNICAL SPECIFICATIONS

RATING VOLTAGE	120 V
WATTAGE	45 W
FREQUENCY	60 Hz
WATER TANK CAPACITY	Approx 1 Gal / 3.78 L
RUN TIME PER TANK	Up to 24 hrs
HUMIDIFYING CAPACITY	Up to 250 sq. ft. / 23 m ²
NOISE	< 37 decibels from 3 ft away

OPERATION & USE

BEFORE EACH USE

- **CHECK HUMIDIFIER PLACEMENT**

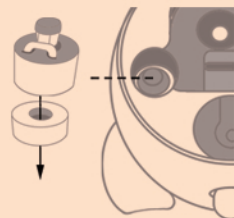
Place the humidifier on clean, solid, non metallic, waterproof, level surface at least 2ft above the floor.

DO NOT PLACE ON CARPET OR TOWEL

The fan vent is located on the bottom of the humidifier base. The fan vent **MUST NOT** be obstructed.

DO NOT PLACE ON WOOD SURFACE

or near furniture that can be damaged by too much moisture without use of a tray or placemat.



- **CHECK WATER LEVEL SENSOR**

Make sure that the Water Level Sensor is secured properly and not obstructed.

Page 2 - List of Main Parts.

ASSEMBLY INSTRUCTIONS

SET BASE IN DESIRED LOCATION BEFORE FILLING THE TANK.

Moving humidifier while tank is placed on the base may cause leakage or overfilling of the base.

1. Turn water tank upside down, unscrew the Water Tank Cap and fill with cool water only.



DO NOT

- fill water all the way to the rim
- add medication, essential oils, or salt
- carry by handle when full of water



**Always carry with 2 Hands
when tank is filled with water**

3. Screw Cap back onto tank, turn over and place on the humidifier base.
4. Plug the power cord in and use the control knob to turn on. Indicator light will turn green & within seconds, mist will begin rising through the mist lid.
5. Use the control knob to adjust the intensity of the mist output.

SET THE CORRECT HUMIDITY OUTPUT:

Adjust the control knob so the mist rises up to be absorbed by the room air. If mist drops quickly, turn down control knob until it is rising up.

To reduce excessive humidity, especially in small rooms, leave the room door open and adjust to a lower mist intensity.



6. As a safety feature, when the humidifier runs out of water, the power indicator light will turn red & the mist output will stop to prevent damaging the Nebulizer. Turn the humidifier off and unplug the unit before removing and refilling the water tank.

MAINTENANCE INSTRUCTIONS

Cleaning and disinfecting on a regular basis is important for maintaining the performance of your humidifier.

IMPORTANT:

Water left in tank or base when unit is not in use may result in buildup of mineral deposits and bacteria.

When emptying base make sure NOT to pour towards the air vent.

DAILY MAINTENANCE

1. Turn off, unplug from outlet, and empty water from tank & base daily.
2. Allow tank & base to air dry.
3. Leave cap off the tank until ready for next use.

WEEKLY MAINTENANCE

1. Turn off, unplug from outlet, and empty water from tank & base.
2. Fill the water tank halfway with warm water. Add 2 tablespoons of white vinegar. Shake vigorously and let sit for 30 min. Empty tank & rinse with plain water.
3. Rinse warm water through the mist outlet channel.
4. Fill base with water, add 1 tablespoon of white vinegar & let sit for 30 min. Empty base & rinse with plain water.

***TIP: Clean the nebulizer with a damp cloth or cotton swab after soaking*

5. Allow tank & base to air dry.
6. Leave cap off the tank until ready for next use.

NEVER IMMERSE HUMIDIFIER BASE IN WATER.

END-OF-SEASON MAINTENANCE & STORAGE

1. Turn off, unplug from outlet, and empty water from tank & base.
2. Follow instructions for weekly maintenance above.
3. Let all parts dry completely.
4. Store humidifier in a cool, dry place.

CRANE CUSTOMER CARE



888-599-0992 (Mon - Fri 9:00am - 4:00pm CST)



CUSTOMER-SERVICE@CRANE-USA.COM



LIVE CHAT (available at www.Crane-USA.com)

TROUBLE SHOOTING

DO NOT attempt to repair the motor or nebulizer yourself.
If the humidifier continues to not operate, please contact Crane Customer Care.

INDICATOR LIGHT IS STAYING RED

- Ensure the cap is secured properly to the tank to allow water to pass through to the base.
- The base may be overfilled: Remove the tank, empty the base & replace the filled tank on the empty base.
- Clean Water Level Sensor: Pull off the plastic cap from the peg. Remove the water level sensor float and clean with warm sudsy water. Replace parts by first putting the float onto the peg then replacing the plastic cap on the peg. (see diagram on page 3)

HUMIDIFIER DOES NOT HAVE ANY POWER

- Ensure unit is properly plugged into a power outlet / try another power outlet.
- Check the Control Knob is turned to the ON position.
- If Power On indicator light does not come on, contact Crane Customer Care.

THERE IS A STRANGE ODOR

- Clean the Water Tank with a water & white vinegar solution and rinse with clean water.
- Leave the empty Water Tank open in a cool place for 12 hours without Water Tank Cap attached.

INDICATOR LIGHT IS GREEN, BUT THERE'S NO MIST

- Complete weekly maintenance. (see page 5)
- Humidifier should be on a hard flat surface so the fan vent is not being blocked.
- Try turning control knob up to MAX and let run for 10 minutes.

WHITE DUST APPEARS & SETTLES OUTSIDE THE HUMIDIFIER

- Area tap water may have too many minerals. Change to filtered or distilled water, or purchase a Crane demineralization filter cartridge. (www.crane-usa.com)

HUMIDIFIER IS LEAKING

- FROM MIST LID: Turn control knob down
- FROM TANK: Check for any possible cracks in tank or around seam
- FROM BASE: Call Crane Customer Care

CRANE WARRANTY

For more information regarding the warranty policy,
please visit our website: www.crane-usa/customer-service

LIMITED WARRANTY

Thank you for purchasing a Crane product which has been tested to meet our quality standards. This product is warrantied to be free from manufacturing defects under normal use and conditions for 1 year.

**PLEASE CONTACT US BEFORE RETURNING THIS PRODUCT TO THE STORE.
CALL CRANE CUSTOMER CARE FOR PROBLEMS AND QUESTIONS. WE CAN HELP.**

WARRANTY REQUIRES A DATED PROOF OF PURCHASE.

This warranty is void if the defect is due to accidental damage, misuse, abuse, neglect, improper repair or alteration by unauthorized persons, or a failure to follow operating instructions provided with the product, including the use of essential oils. This warranty does not apply to normal wear and tear or commercial use.

In no event shall liability exceed the purchase price paid by the purchaser of the product. Under no circumstances shall there be liability for any loss - direct, indirect or incidental - or consequential damage arising out of, or in connection with the use of this product.

This warranty is valid only in the 48 contiguous states plus the District of Columbia and excludes Puerto Rico and the Virgin Islands. This warranty is effective only if the product is purchased and operated in the United States of America.

Any instructions or warranty included in this manual may be subject to change without notice. For the most up-to-date instructions and warranty information, please contact us or visit our website.

**TO RECEIVE WARRANTY INSTRUCTIONS AND RETURN AUTHORIZATION,
PLEASE CALL, EMAIL, OR LIVECHAT CRANE CUSTOMER CARE.**

CRANE USA, INC

1015 Hawthorne Dr, Itasca, IL 60143

Toll Free: 1-888-599-0992 (Monday - Friday 9:00am - 4:00pm CST)

Email: customer-service@crane-usa.com

Website: www.crane-usa.com

GENERAL SAFETY INSTRUCTIONS

WARNING! READ AND UNDERSTAND ALL INSTRUCTIONS.

Failure to follow all of the instructions listed below may result in electric shock, fire and/or serious personal injury. The warnings, cautions and instructions discussed in this instruction manual cannot cover all possible conditions and situations that may occur. It must be understood by the user that common sense and caution are a factor which cannot be built into this products, but must be supplied by the user.

THIS HUMIDIFIER IS NOT A TOY!

Do not let your child play with this humidifier. Serious injury and electrocution might be possible. This humidifier has to be operated by an adult only. Children should be supervised to ensure they do not play with the humidifier.

SAVE ALL INSTRUCTIONS!

CAUTION: A short Power Supply Cord is provided to reduce the risk of personal injury resulting from becoming entangled in or tripping over a longer cord. Extension cords are available from local hardware stores and may be used if care is exercised in their use. If an extension cord is required, special care and caution is necessary. Also, the extension cord must be (1) marked with an electrical rating of 125V and at least 13A., 1625W., and (2) the cord must be arranged so it will not drape over the countertop or tabletop where it can be pulled on by children or accidentally tripped over.

ELECTRIC POWER

If the electric circuit is overloaded by other appliances, your humidifier and/or appliances may not operate properly. The humidifier should be operated on a separate electrical circuit from other operating appliances.

POLARIZED PLUG

This humidifier has a polarized plug (one blade is wider than the other). As a safety feature to reduce the risk of electrical shock, this plug is intended to fit in a polarized outlet only one way. If the plug does not fit fully in the outlet, reverse the plug. If it still does not fit, contact a qualified electrician. Do not attempt to defeat this safety feature.



SAFETY WARNING

Although your humidifier is easy to operate, for your safety, the below warnings must be followed:

1. Do not place the humidifier near a heat source.
2. Never leave the humidifier unattended while connected to the electrical outlet.
3. To avoid any accidents, never cover the Mist Lid when the humidifier is in operation.
4. Use the humidifier on a smooth, flat, lint-free, non-metallic, waterproof, and level surface away from water.
5. Do not unplug from the wall socket by pulling on the supply cord.
6. The humidifier must be unplugged:
 - A. Before either filling or emptying the Water Basing and/or Water Tank
 - B. Before any cleaning or maintenance is performed
 - C. After each use
 - D. If it appears to be faulty

THIS PRODUCT IS INTENDED FOR HOUSEHOLD USE ONLY.

