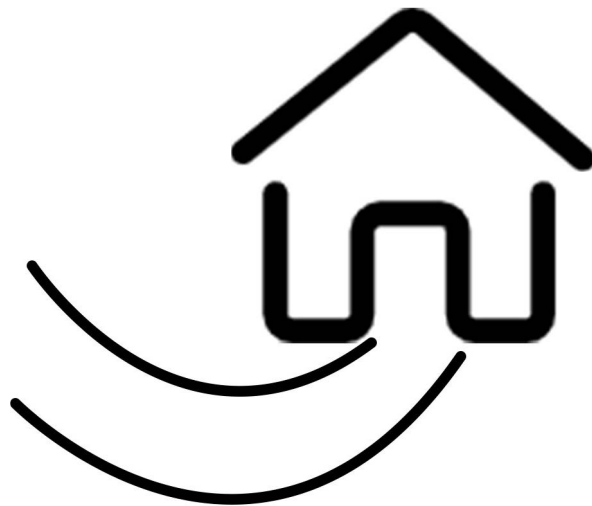


HAPPINESS HAPPINESS INSTALLATION



CAUTION

Parts are placed at the bottom of the product.

- If you have any questions with the product, please contact us by:
- **Email: customerservice@zoy-living.com**
(we will reply to you within 24 hours)

Fabric Sectional
Canapé sectionnel en tissu
Sofá seccional de tela
ITM. / ART. 1635562
Model / Modèle / Modelo 5408A

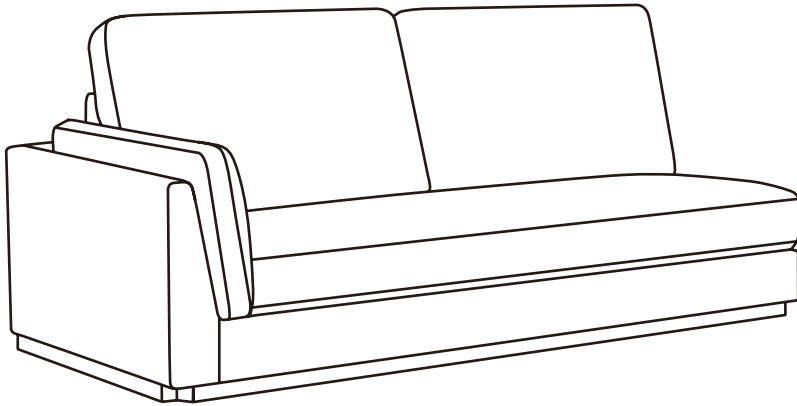
ASSEMBLY INSTRUCTIONS
INSTRUCTIONS D'ASSEMBLAGE
INSTRUCCIONES DE ENSAMBLE

IMPORTANT, RETAIN FOR FUTURE REFERENCE: READ CAREFULLY.
IMPORTANT, À CONSERVER POUR DE FUTURS BESOINS DE RÉFÉRENCE : À LIRE SOIGNEUSEMENT
IMPORTANTE: CONSERVE PARA FUTURA REFERENCIA. LEA CUIDADOSAMENTE
FOR INDOOR USE ONLY / À USAGE INTÉRIEUR SEULEMENT / PARA USO EN INTERIORES SOLAMENTE

CARE AND CLEANING	ENTRETIEN ET NETTOYAGE	CUIDADO Y LIMPIEZA
<p>Dust often and use a vacuum cleaner crevice tool to clean seams. To maintain the fabric appearance, gently clean soiled areas with a soft cloth dampened with a mild, water based detergent. Remove all lather and wipe with a clean, damp cloth. Dry with another soft cloth by blotting the damp surface (do not rub).</p>	<p>Épousseter souvent et utiliser le suceur plat de l'aspirateur pour nettoyer les coutures. Pour maintenir l'apparence du tissu, nettoyer délicatement les endroits souillés avec un chiffon doux humecté d'un détergent doux à base d'eau. Enlever toute la mousse et essuyez avec un chiffon propre et humide. Sécher en tamponnant la surface humide avec un autre chiffon doux (ne pas frotter).</p>	<p>Desempolvar con frecuencia y usar una boquilla de aspiradora para limpiar las costuras. Para mantener la apariencia de la tela, limpiar cuidadosamente las áreas sucias con un paño blando humedecido con un detergente suave a base de agua. Quitar toda la espuma y pasar un paño limpio y húmedo. Secar la superficie húmeda con otro paño blando (sin frotar).</p>
<p>Spot Cleaning Fabric Blot any spills immediately; do not rub. Blot away the excess liquid with a clean, dry, white cloth; turning the cloth frequently.</p>	<p>Nettoyage du tissu Tamponner tous dégâts immédiatement, sans frotter. Absorber l'excès de liquide avec un chiffon blanc propre et sec en le retournant fréquemment.</p>	<p>Limpieza de manchas de tela Secar cualquier derrame de inmediato; no frotar. Secar el exceso de líquido con un paño blando, limpio y seco, dándolo vuelta con frecuencia.</p>
<p>Do not use common household cleaners, solvents, or dry cleaning fluids on fabric furniture. These cleaners may cause damage.</p>	<p>Ne pas utiliser de produits de nettoyage domestiques ordinaires, de solvants ou de produits de nettoyage à sec sur les meubles recouverts du tissu. Ces nettoyeurs peuvent causer des dommages.</p>	<p>No usar limpiadores domésticos comunes, solventes o líquidos de limpieza en seco para muebles de tela. Estos limpiadores pueden causar daños.</p>
<p>Do not use or place sharp objects on fabric furniture.</p>	<p>Ne pas utiliser d'objets pointus sur les meubles rembourrés ou ne pas les déposer dessus.</p>	<p>No utilice objetos filosos sobre la tapicería de tela.</p>
<p>Do not place furniture in direct sunlight and keep furniture at least 60 cm / 1.9 ft from heat sources to avoid fading.</p>	<p>Ne pas placer les meubles en plein soleil et les garder à au moins 60 cm / 1.9 pi des sources de chaleur pour éviter une décoloration.</p>	<p>No exposer el mueble directamente al sol y mantenerlo por lo menos a 60 cm / 23.6 pul de las fuentes de calor para que no se destiña.</p>

Contents of Cartons / Contenu de l'emballage / Contenido de la Caja

Carton 1 / Boîte 1 / Caja 1



Left sofa
Canapé gauche
Sofá izquierdo



x1



x1



x4



x8

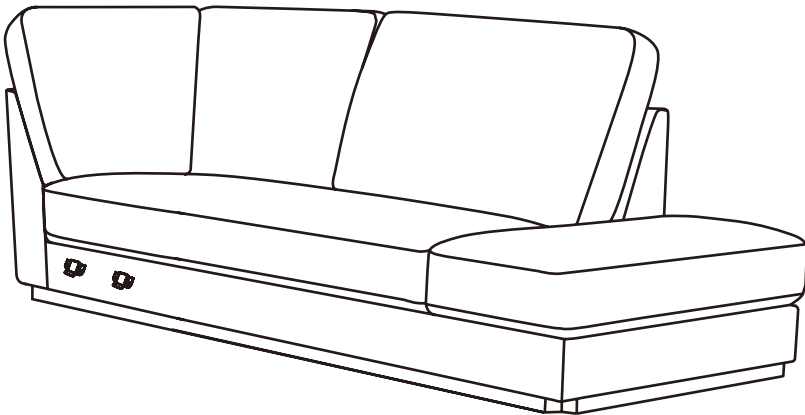


x1



x8

Carton 2 / Boîte 2 / Caja 2



Right chaise
Chaise droite
Silla derecha



x1



x1



x4



x8



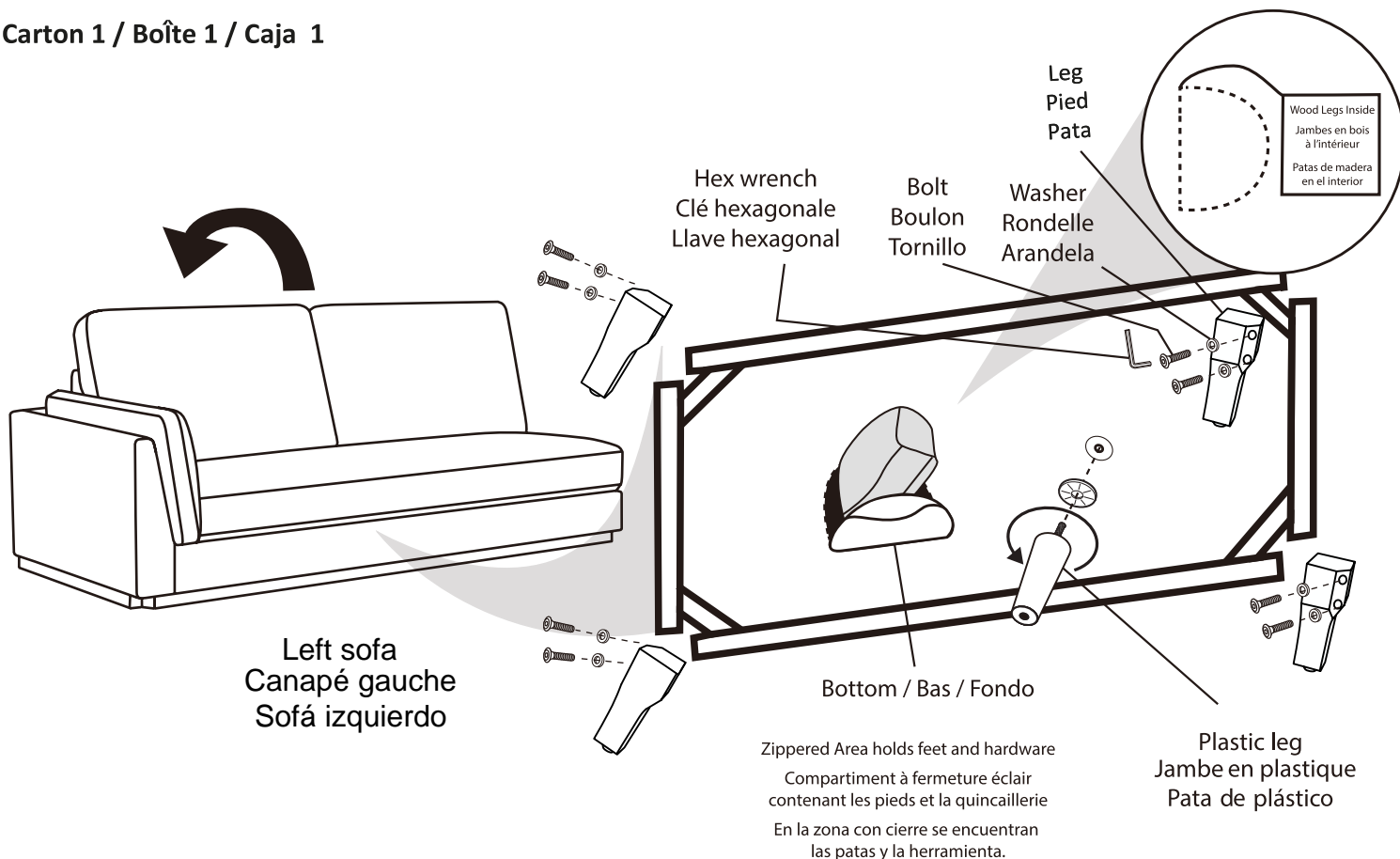
x1



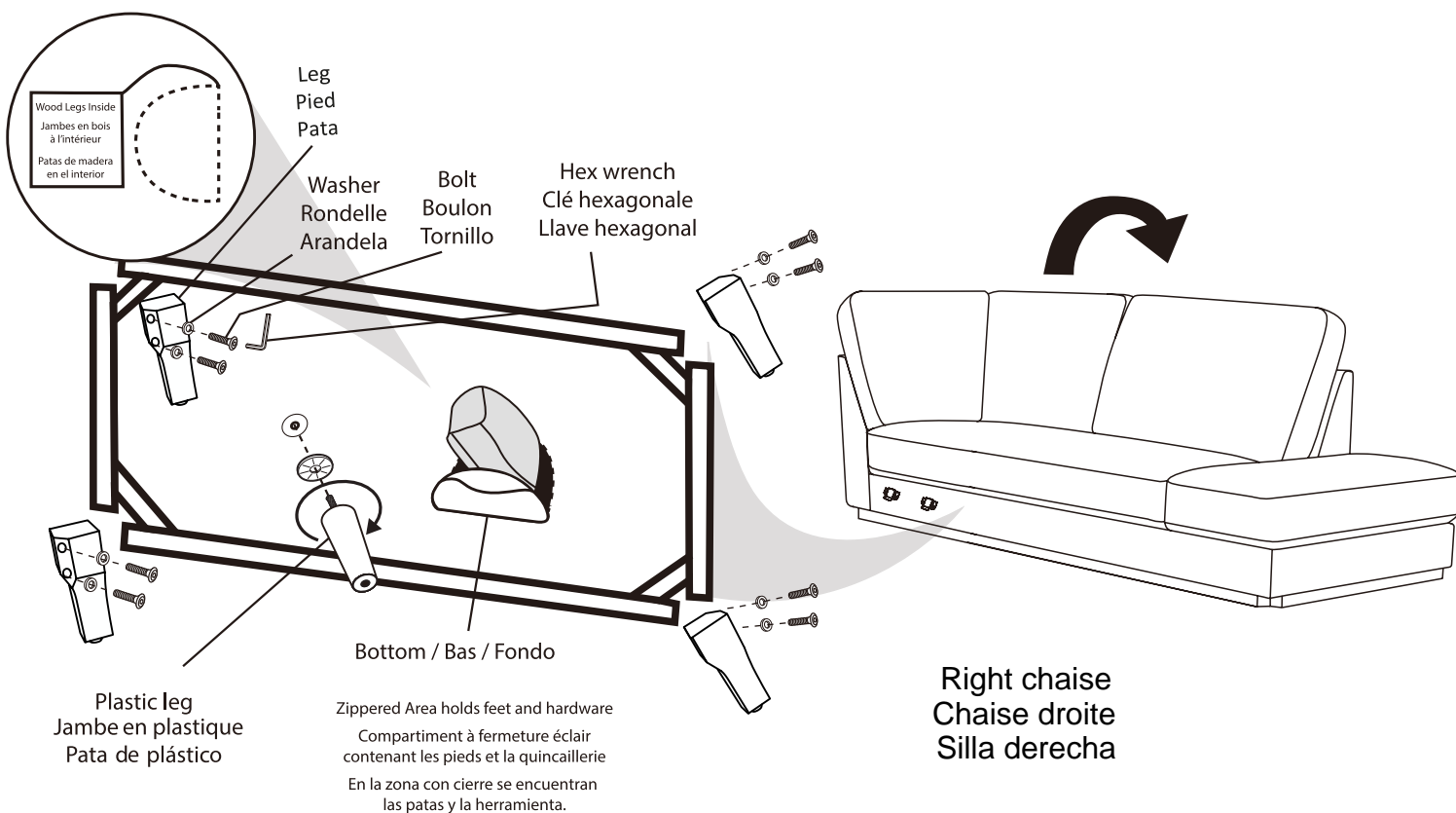
x8

Contents of Cartons / Contenu de l'emballage / Contenido de la Caja

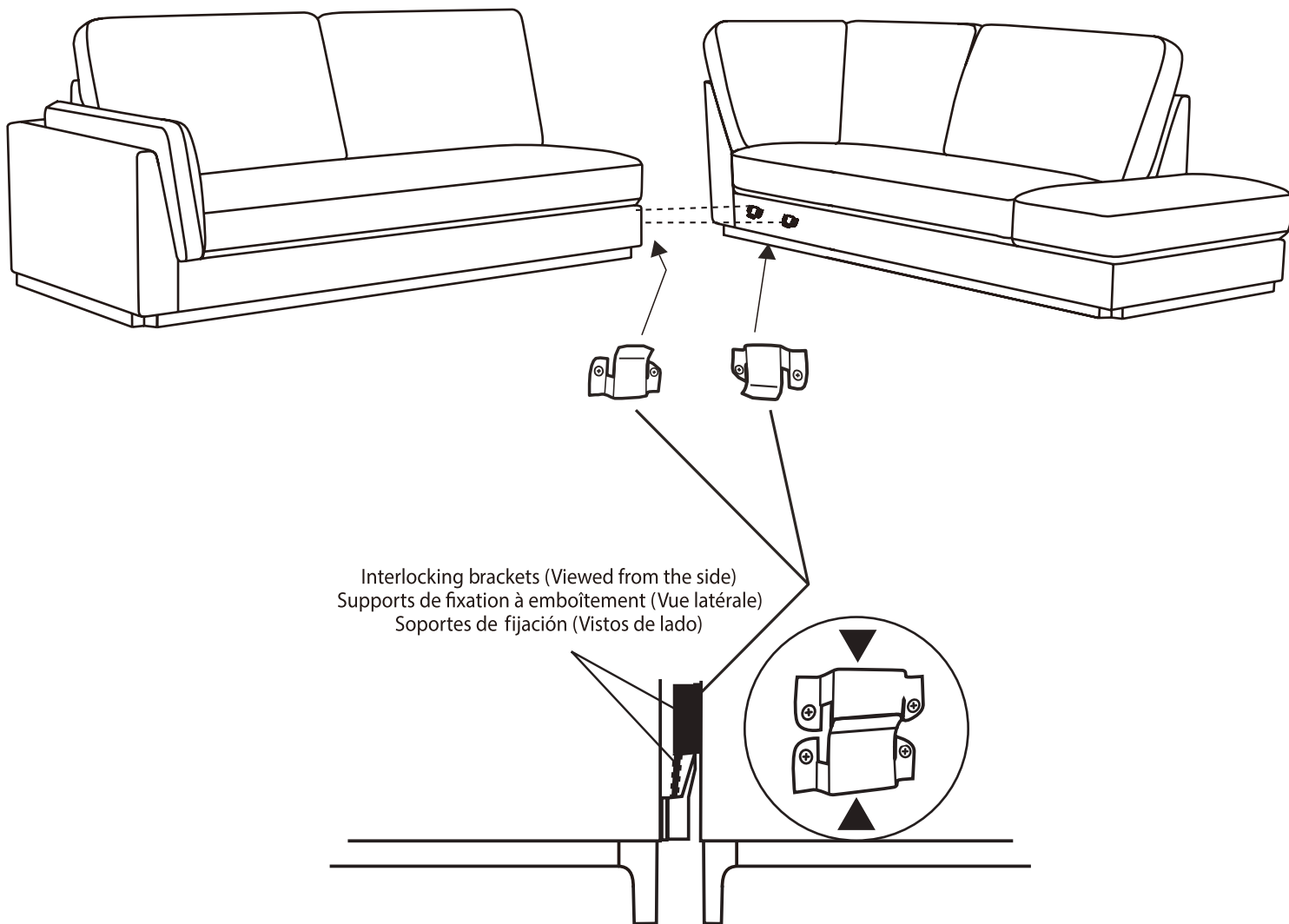
Carton 1 / Boîte 1 / Caja 1



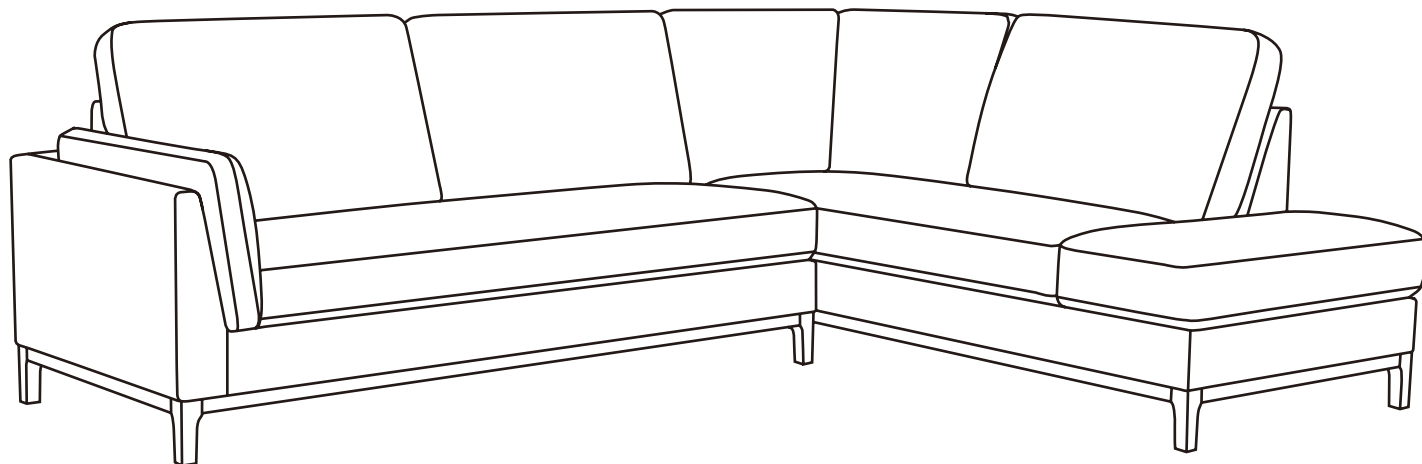
Carton 2 / Boîte 2 / Caja 2



Assembly Instructions / Directives d'assemblage / Instrucciones de Ensamblado



Brackets slide together to lock furniture together
Les supports glissent ensemble pour verrouiller les meubles ensemble
Los soportes se deslizan juntos para bloquear los muebles juntos



Warnings

1. Please check if the components of the chair are all included and can be used normally.
2. Assemble all components according to the instruction correctly before you connect the chair to the power.
3. Please DO NOT sit on the armrests or footrest to eliminate the risk of tipping over.
4. If the chair is damaged or doesn't match the website description, please send clear pictures of the product and label of the carton to our service team for further help.
5. If the recliner doesn't work, you may try the following measures for self-checking firstly:
 - a) Check if all the cables are connected;
 - b) Check if the light of transformer is on.

If the chair still doesn't work, please feed the information back to our customer service in time and we'll help you solve the matter as soon as possible.

6. If you have any questions with the product, please contact us by:

Email: customerservice@zoy-living.com (we will reply to you within 24 hours)

