

NICOR[®]

HBC5

Selectable Low Bay / High Bay



3.5K 4K 5K
Low Med High



HBC5

Die-Cast Aluminum Housing

Vented aluminum heatsink provides superior cooling while reducing fixture weight

Effortless Installation

Mounting hook with locking bolt included for secure installation. Optional Pendant and Yoke mounts are also available.

Optic Lens

Includes 90° flat polycarbonate optic standard.

Selectable CCT



Selectable Wattages



Redesigned with Selectable Wattage and Color Temperature

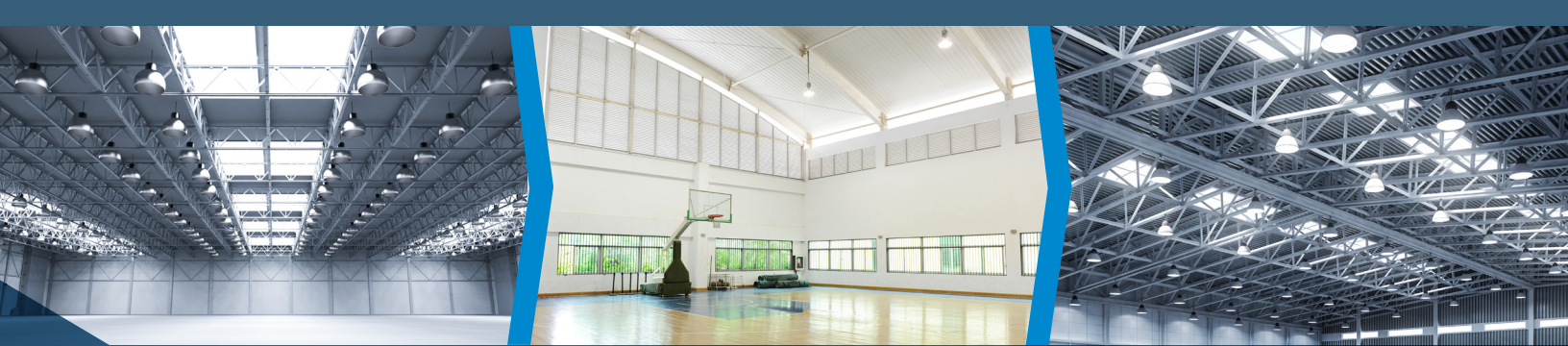
The HBC5 LED Circular Low-Bay/High-Bay is a leading high-performance lighting solution with Selectable wattage, Selectable color temperature, and wireless control technology. With a sleek and compact form, it offers improved energy efficiency with low-voltage accessory features. The die-cast aluminum housing with integrated heatsink is designed with multiple mounting points for added options and accessories. The HBC5 produces an impressive light output exceeding 130 lumens per watt and excellent color rendering for true clarity. It features a 12V accessory socket for field-install sensors and Bluetooth control via the NICOR NLC app. The HBC5 is the ideal fixture for warehouses, retail stores, gymnasiums, and other large indoor spaces.

Performance Data

Normal Operation					40W EM
Model #	CCT	Lumens	Watts	LPW	Lumens
HBC5150SUS8	3500	13396	100	134	5358
	4000	14472		145	5789
	5000	13561		136	5424
	3500	16075	120	134	5358
	4000	17366		145	5789
	5000	16274		136	5424
	3500	20094	150	134	5358
	4000	21708		145	5789
	5000	20342		136	5424
HBC5240SUS8	3500	27183	200	136	5437
	4000	29140		146	5828
	5000	27545		138	5509
	3500	29901	220	136	5437
	4000	32054		146	5828
	5000	30300		138	5509
	3500	32619	240	136	5437
	4000	34968		146	5828
	5000	33054		138	5509

Fixture tested per LM-79-08. Photometric data is the performance of a representative fixture. Results may vary in the field.



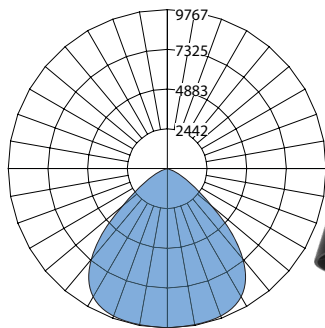


Applications: Warehouses, retail stores, gymnasiums, and other large indoor spaces.

Photometric Data

150W 5000K

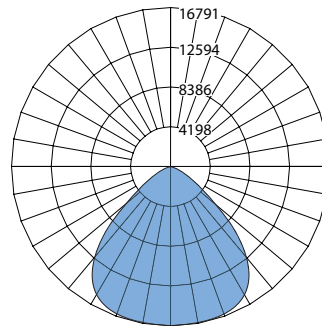
Input Voltage (VAC)	120-277
System Level Power (W)	150.1
Delivered Lumens (Lm)	20342
System Efficacy (Lm/W)	135.5
Correlated ColorTemp (K)	5131
Color Rendering Index (CRI)	82
Beam Angle	90.8
Spacing Criteria	1.37



150W

240W 5000K

Input Voltage (VAC)	120-277
System Level Power (W)	243.6
Delivered Lumens (Lm)	33540
System Efficacy (Lm/W)	137.7
Correlated ColorTemp (K)	5092
Color Rendering Index (CRI)	84
Beam Angle	90.8
Spacing Criteria	1.30



240W

Ordering Information

Example: HBC5150SUS8BK

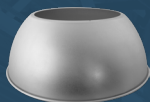
Series	Version	Wattage	Voltage	CCT's	CRI	Finish
HBC	5	150S (100W/120W/150W)	U (120-277VAC)	S (3500K/4000K/5000K)	8 (80+)	BK (Black)
		240S (200W/220/240W)				WH (White)

Specifications and dimensions subject to change without notice.

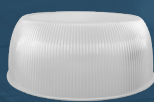
Accessories



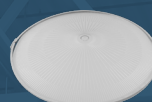
Wire Guard



90° Aluminum Reflector



90° Polycarbonate



Polycarbonate
Glare Shield



Pendant Mount Adapter



U-Bracket



PIR Sensor



Microwave Motion Sensor



HBC4REMOTE



Emergency Backup



EM Remote



NLC Wireless

Warehouse Locations

Albuquerque, NM
Buford, GA
Detroit, MI
Roseville, CA

T 800.821.6283

F 800.892.8393

www.nicorlighting.com

**2200 Midtown Pl. NE
Albuquerque, NM 87107 USA**



LIT-HBC5-10PK
20230927

© 2023 NICOR® • ALL RIGHTS RESERVED

NICOR®

